

Souvenir

PICTURESQUE ROANOKE



VIRGINIA

VR

917.

5597

P598

1ST EDITION

THIS BOOK IS
FROM THE
PUBLIC LIBRARY
OF ROANOKE
VIRGINIA

REFERENCE

PICTURESQUE ROANOKE

Being *A Series of Reproductions* from photographic views, taken in the City of Roanoke, Virginia, and the vicinity thereof, especially for this work

UNAVOIDABLY, SOME OF THE CHOICEST VIEWS AND MOST ATTRACTIVE RESIDENCES DO NOT APPEAR IN THIS EDITION, BUT OUR PLANS FOR SUBSEQUENT EDITIONS CONTEMPLATE QUITE A NUMBER OF ADDITIONS, CHANGES, AND IMPROVEMENTS, AND WE SHOULD ESTEEM IT A FAVOR IF OUR FRIENDS WILL SEND US ATTRACTIVE VIEWS OF THE EXTERIORS OF THEIR HOMES, OR ANY VIEW OF PICTURESQUE SCENERY THEY MAY POSSESS OR BE ABLE TO SECURE



Copyrighted, nineteen hundred and two

By *The Stone Printing and Manufacturing Company*, Printers and Publishers, Roanoke, Virginia

Compliments

B. M. L. Mather

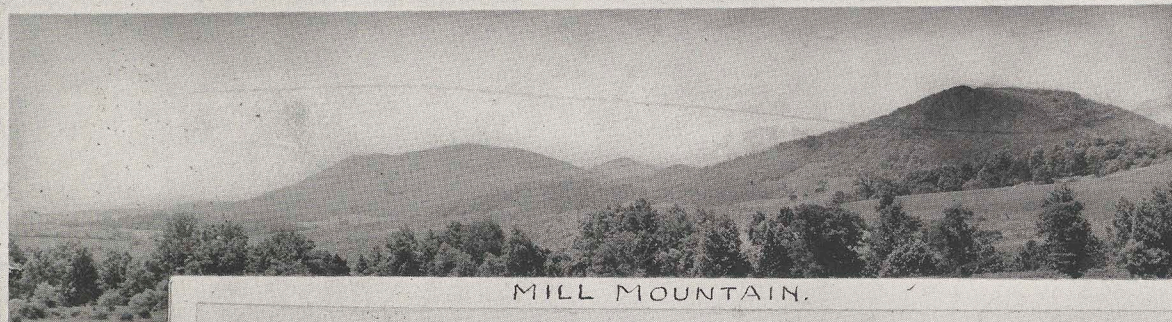
Published by THE STONE PRINTING AND MANUFACTURING COMPANY, *Roanoke, Virginia*

For sale at the *Bookstores* or by the *Publishers*. Price, fifty cents; by mail, sixty cents
A Few, specially bound in ooze sheep, \$1.25; by mail, \$1.35

0 1195 04727809

Cap. 1

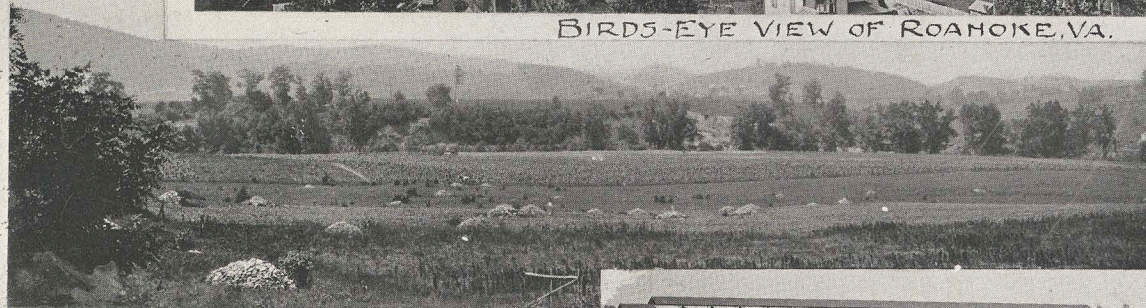
VR_{ref} P
917.5597
P 589



MILL MOUNTAIN.



BIRDS-EYE VIEW OF ROANOKE, VA.



THE GISH FARM



WEST END ROLLING MILL.



BETHANY PRESBYTERIAN CHURCH.



FRANK A. HILL



POST OFFICE



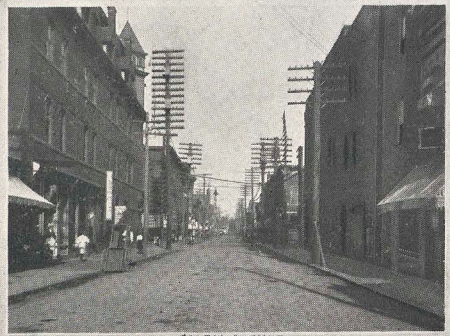
NARROW GAUGE BRIDGE.



GENERAL OFFICES N. & W. RY.



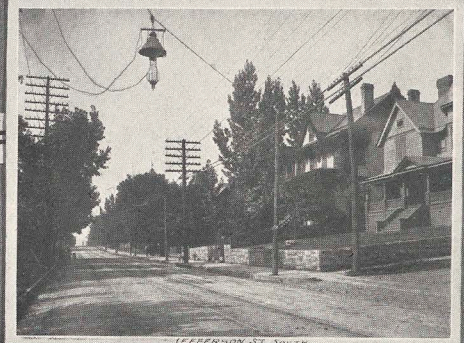
A JEFFERSON ST. RESIDENCE.



SALEM AVENUE

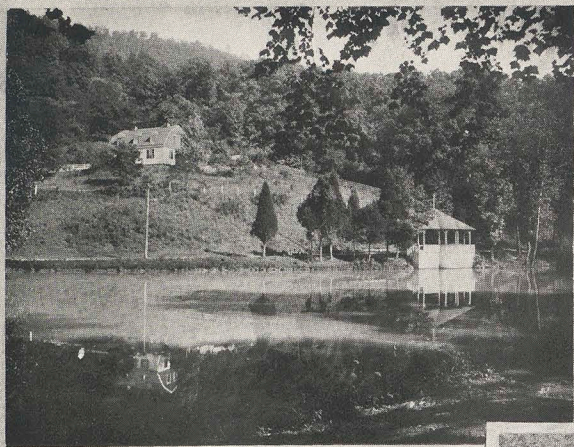


DEPOT N. & W. RY.

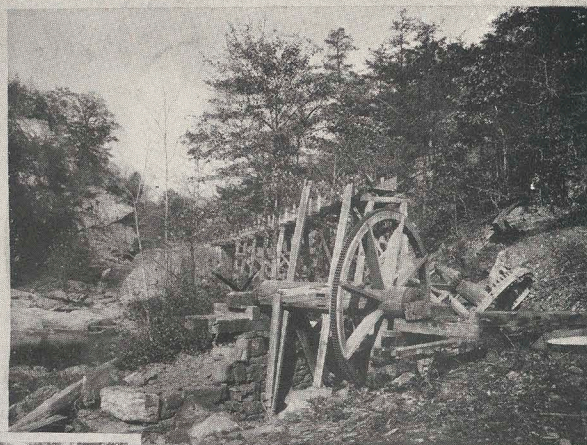


JEFFERSON ST. SOUTH.

SPRING ARBOR, VA.



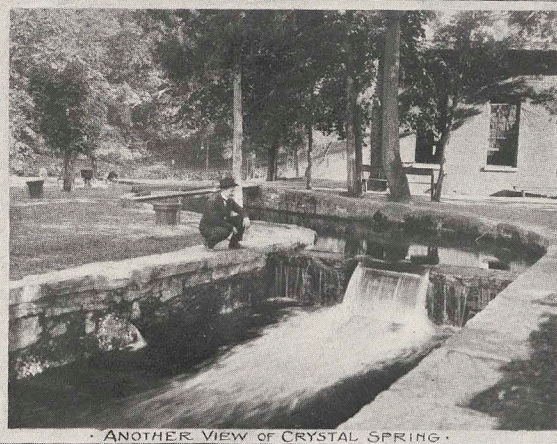
CRYSTAL SPRING



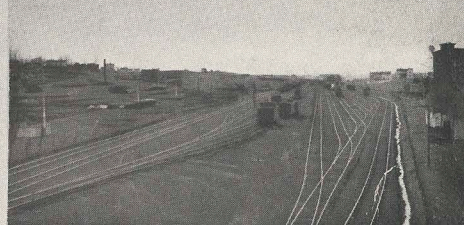
RUINS OF OLD MILL NEAR ROANOKE, VA.



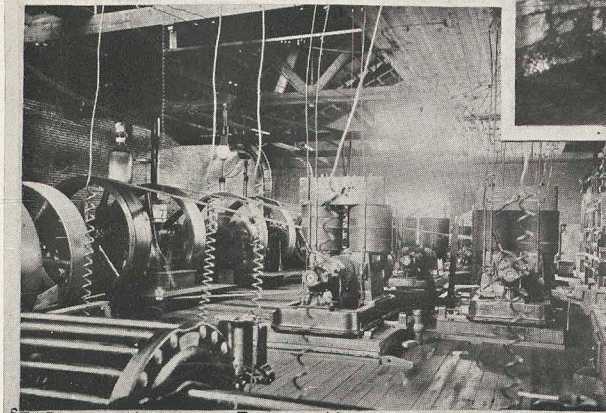
WEST END



ANOTHER VIEW OF CRYSTAL SPRING



WEST END YARDS



STONE ROANOKE, VA.

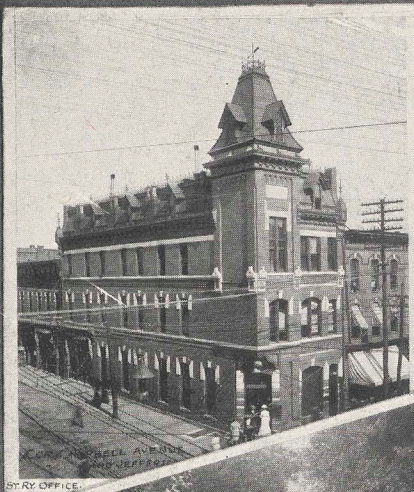
POWER HOUSE



IRON BELT BUILDING



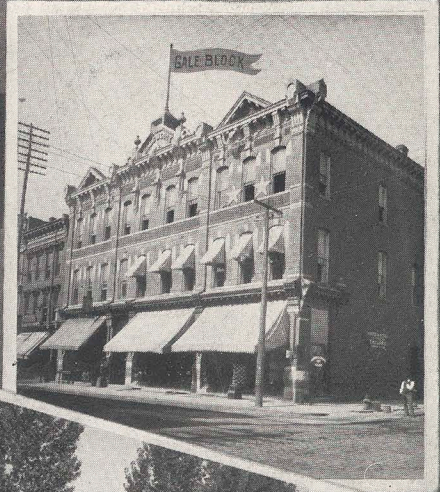
PONCE DE LEON HOTEL



ST. RY. OFFICE



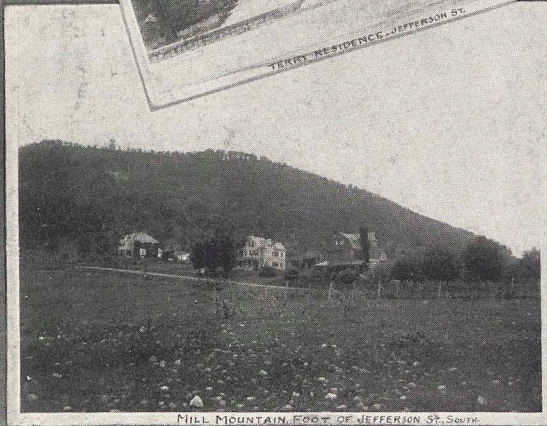
TERRY BUILDING



TERRY RESIDENCE - JEFFERSON ST.



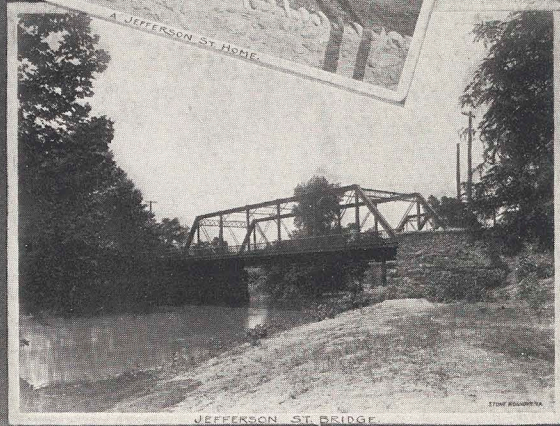
A JEFFERSON ST. HOME



MILL MOUNTAIN, FOOT OF JEFFERSON ST. SOUTH



W. R. HOSE CO.

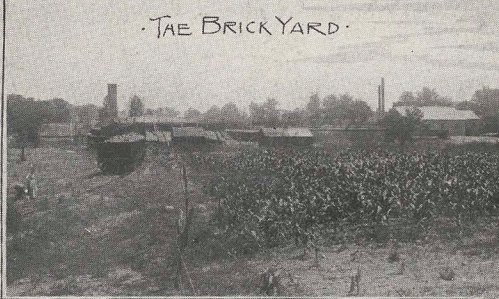


JEFFERSON ST. BRIDGE

STONE, RICHMOND, VA.



• SAMUEL B. CARY •



• THE BRICK YARD •



• T. L. KENNETH •



• FRANKLIN ROAD •



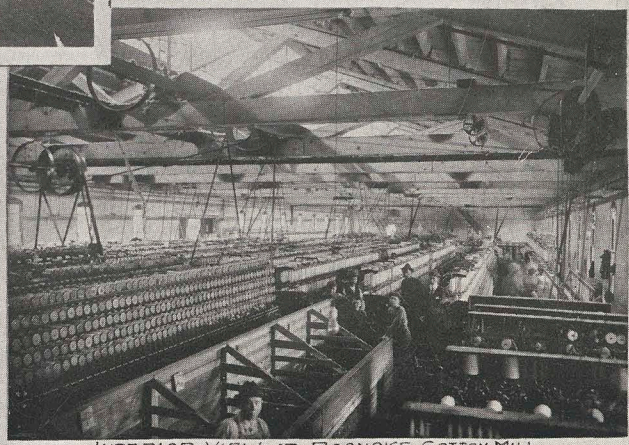
• ADAMS EXPRESS CO. - SOUTHERN EXPRESS CO. •



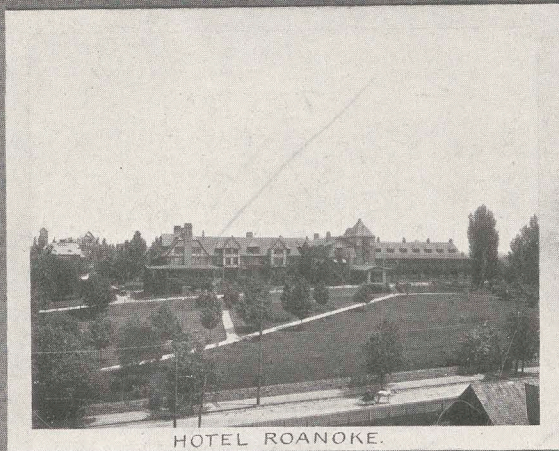
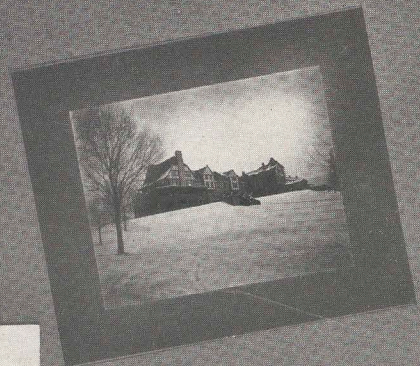
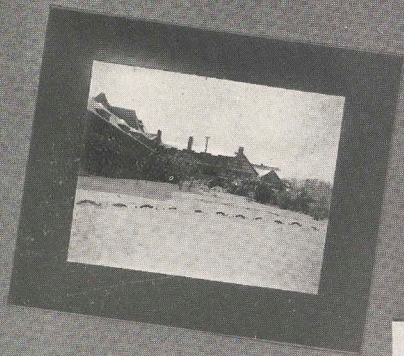
STONE, ROANOKE, VA. • L. E. JOHNSON •



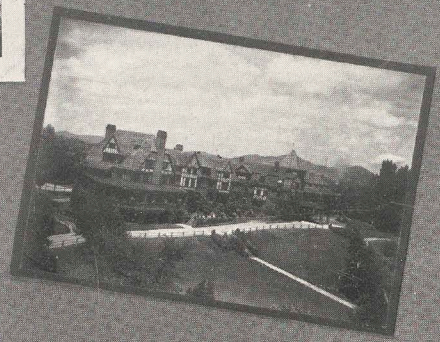
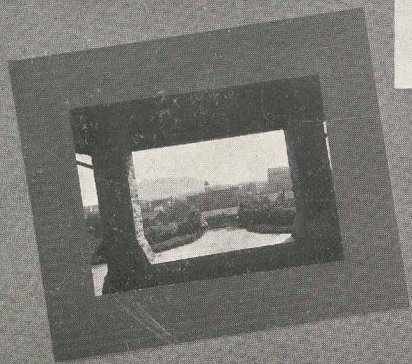
• CRITTENDON HOME •



INTERIOR VIEW AT ROANOKE COTTON MILL



HOTEL ROANOKE.



J. L. ONE, ROANOKE, VA.



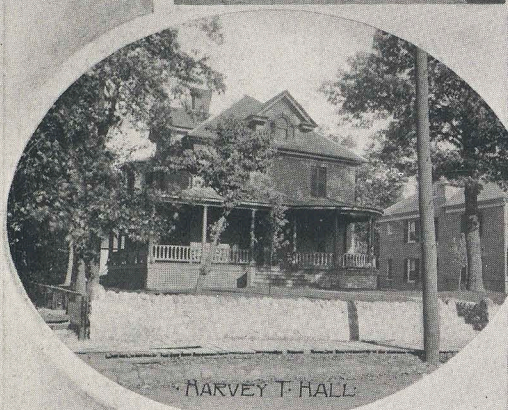
ROANOKE ELEVATOR



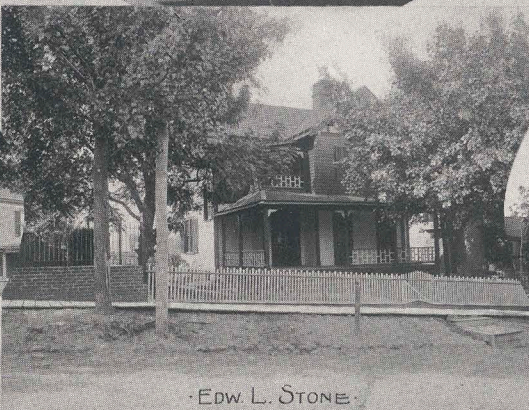
CHAS T. JENNINGS



ROANOKE GROCERY AND MILLING CO.



HARVEY T. HALL



EDW. L. STONE



GEORGE McBAIN



STONE
ROANOKE VA.

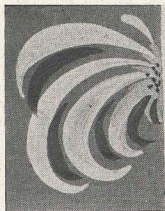
THE "EVENING WORLD" OFFICE



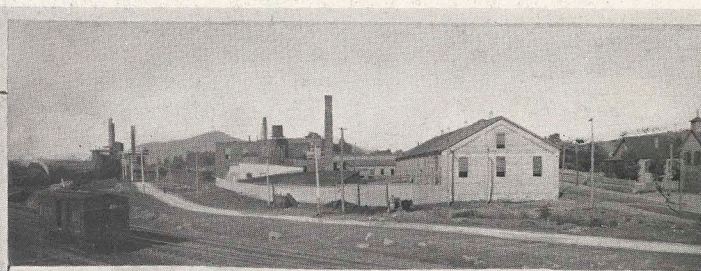
S. D. FERGUSON



THE ROANOKE TIMES OFFICE



• CATHOLIC ORPHANAGE •



• THE BREWERY •



• OLD CATHOLIC CHURCH •



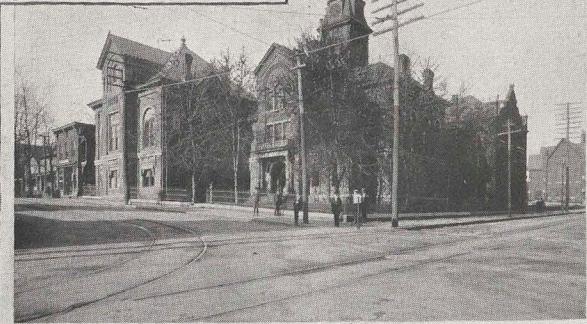
• NEW CATHOLIC CHURCH •



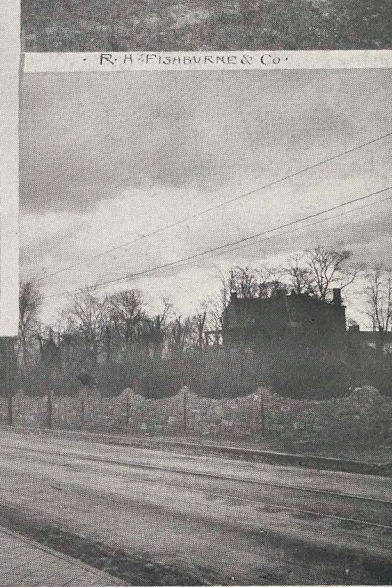
• R. H. FISHBURN & CO •



OVER ROANOKE RIVER



• CITY HALL AND JAIL •



• VIEW OF ELMWOOD - MRS. F. J. TERRY'S RESIDENCE •



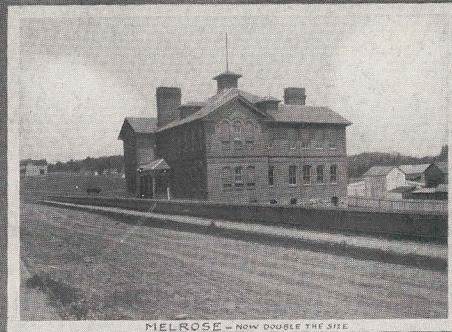
STONE • ROANOKE • VA •

• S. W. JAMISON •





BELMONT



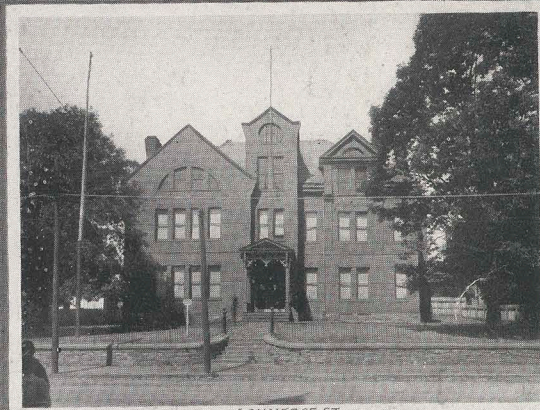
MELROSE - NOW DOUBLE THE SIZE



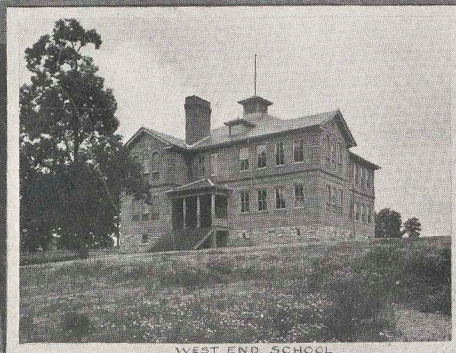
HIGH SCHOOL

PUBLIC SCHOOLS

ROANOKE,
VA.



COMMERCE ST.



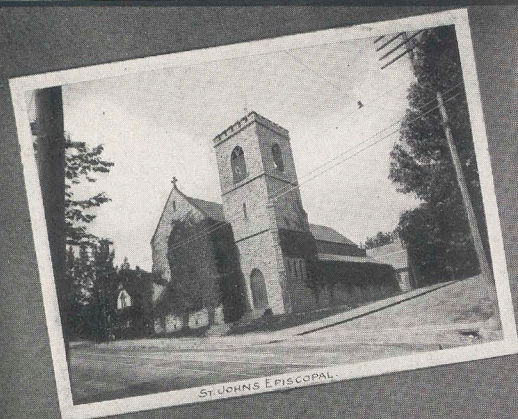
WEST END SCHOOL



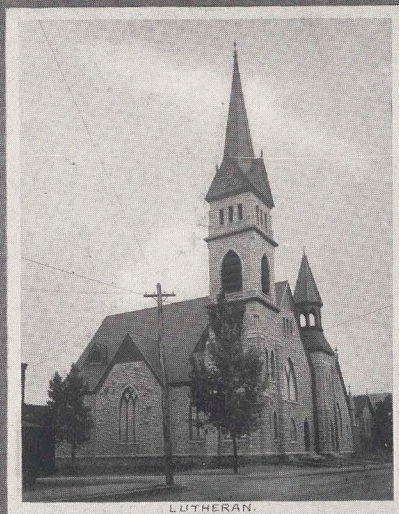
GILMER



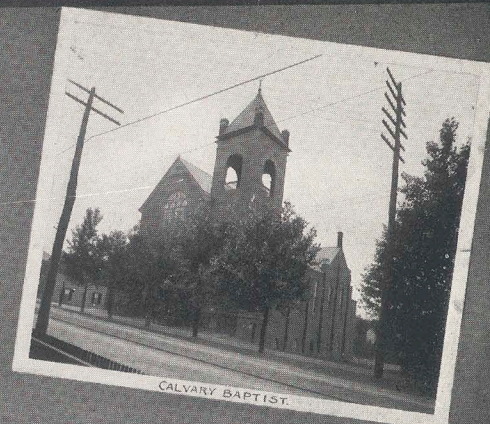
STONE
BANKS, VA.



ST. JOHNS EPISCOPAL.



LUTHERAN.



CALVARY BAPTIST.



GRACE M.E. CHURCH.

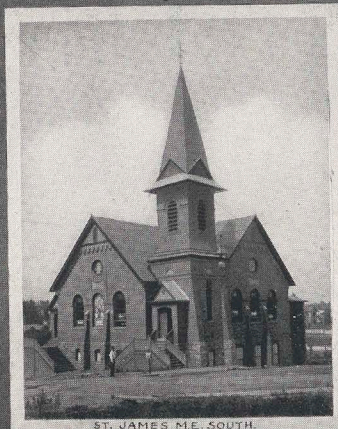
CHURCHES, ROANOKE, VA.



CHRIST CHURCH EPISCOPAL.



JEFFERSON ST. BAPTIST.

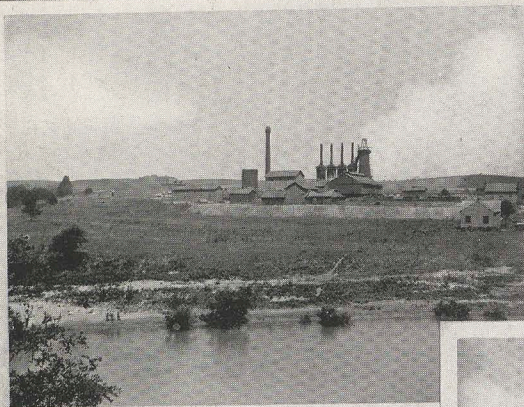


ST. JAMES M.E. SOUTH.

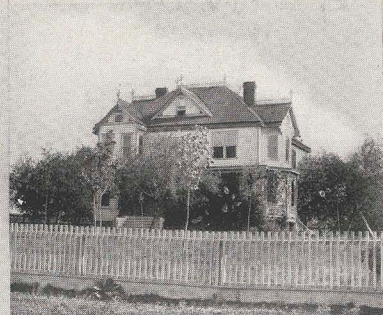


BELMONT M.E. CHURCH.

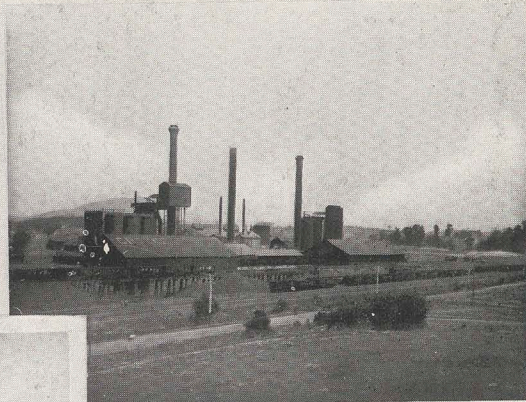
STONE
ROANOKE
VA.



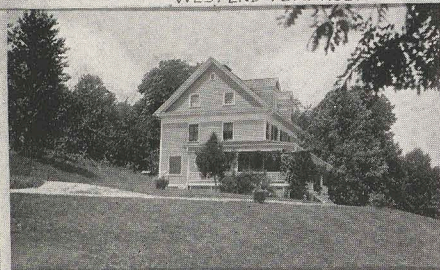
WEST END FURNACE.



SENATOR CLAYTORS.



CROZER IRON WORKS.



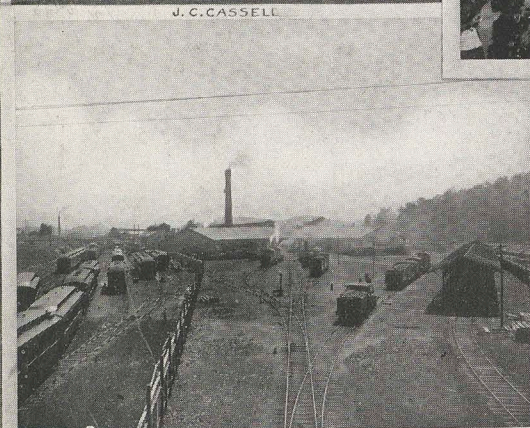
J.C. CASSELL.



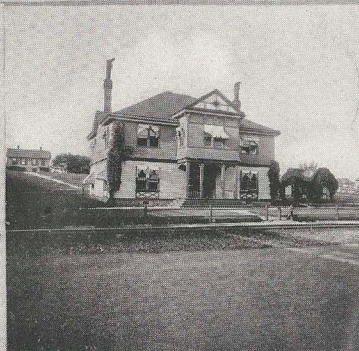
MARKET SQUARE



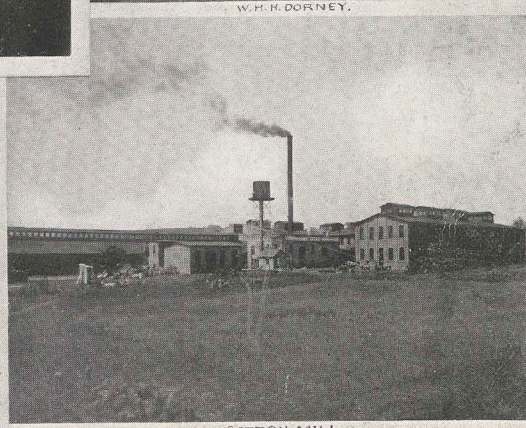
W.H.H. DORNEY.



SHOPS—FROM RANDOLPH ST. BRIDGE.



N & W OFFICES. PARK ST.



COTTON MILL.

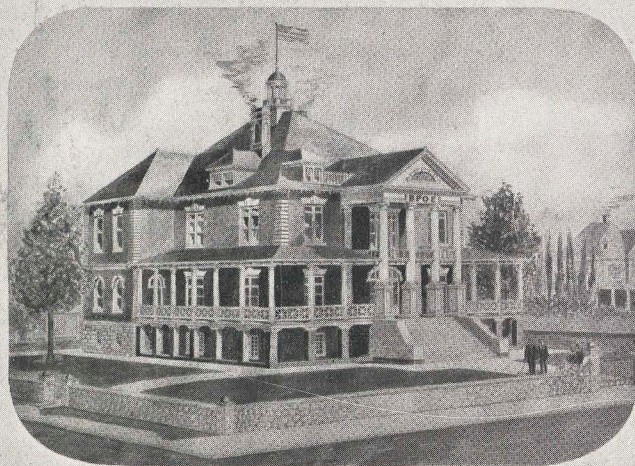
JOHN R. KENNEDY, JR.



RESIDENCE OF MAJ. M. W. BRYAN



S. H. HOGE

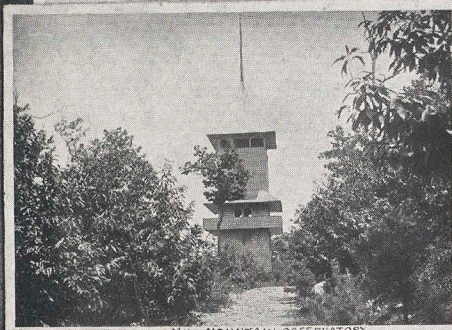
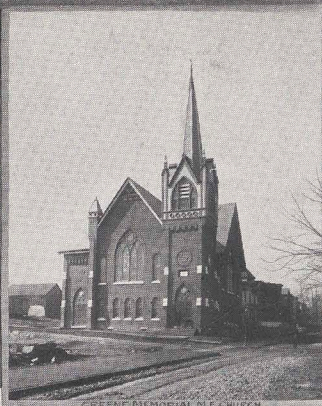


· ELKS' CLUB ·

STONE - ROANOKE, VA.



PARLORS IN THE RESIDENCE OF MAJ. M. W. BRYAN



DR. COLE.



JEFFERSON ST. FROM ST. JAMES.



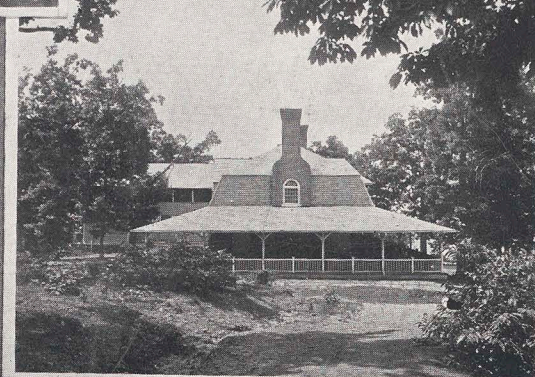
THE WASTE CREST SPRING



M. M. ROGERS.



ROSENBAUM.



MILL MOUNTAIN HOTEL

STONE KENNEDY

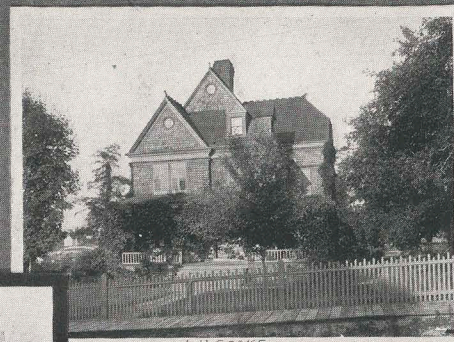




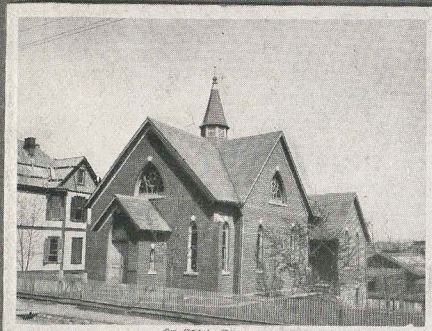
A. KING



MILL MOUNTAIN.



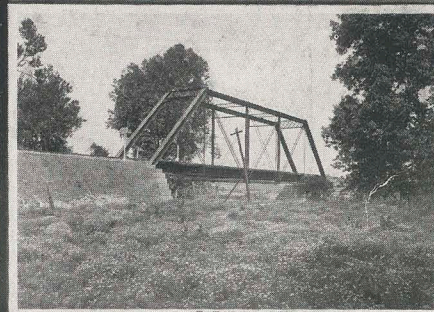
L.H. COCKE.



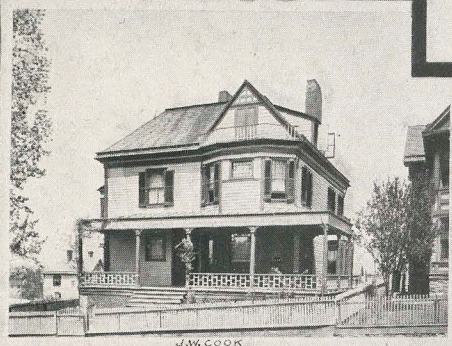
ST. PAUL - REFORMED.



JEFFERSON ST., LOOKING SOUTH.



R.R. BRIDGE



J.W. COOK

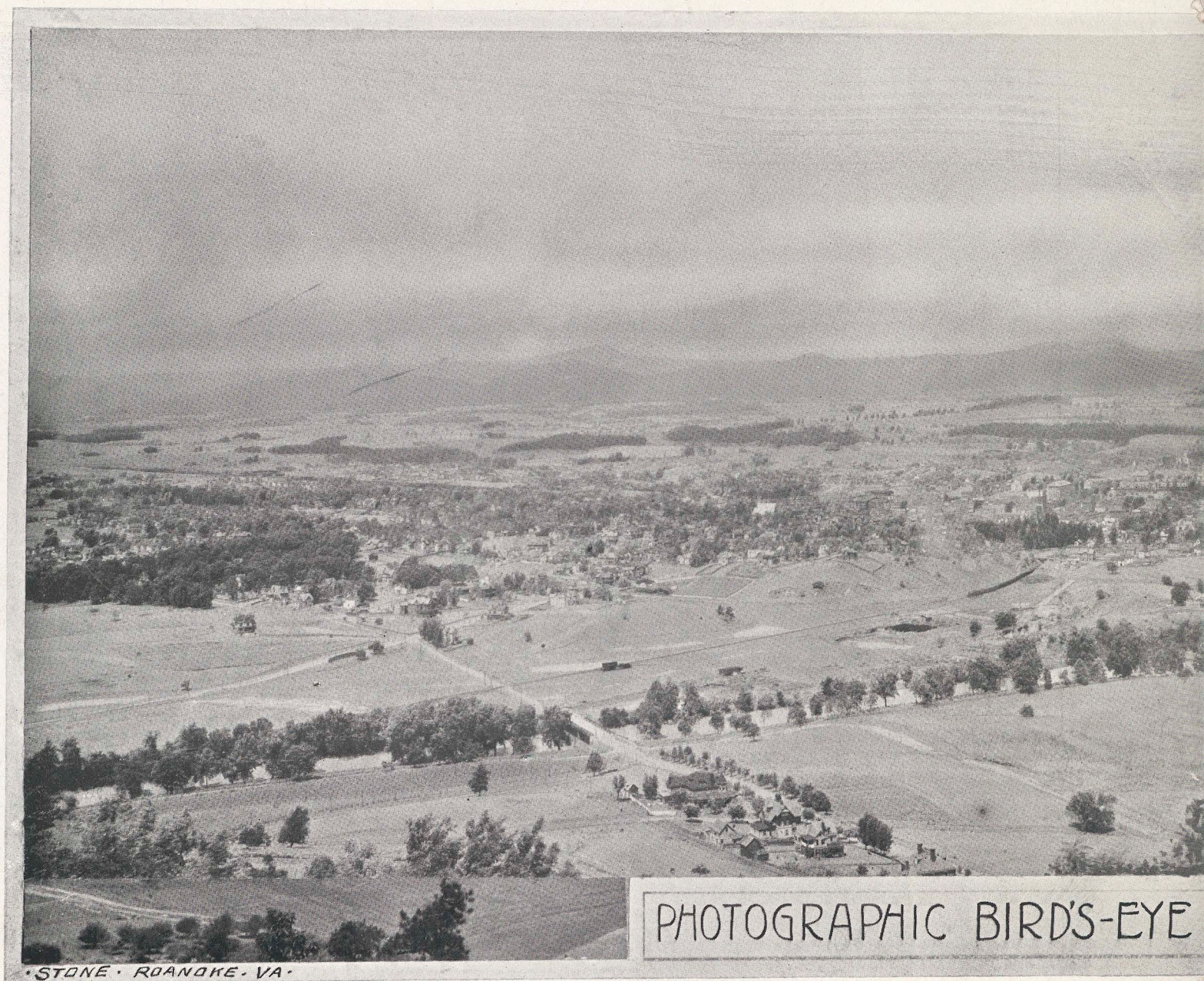


OLD MILL.



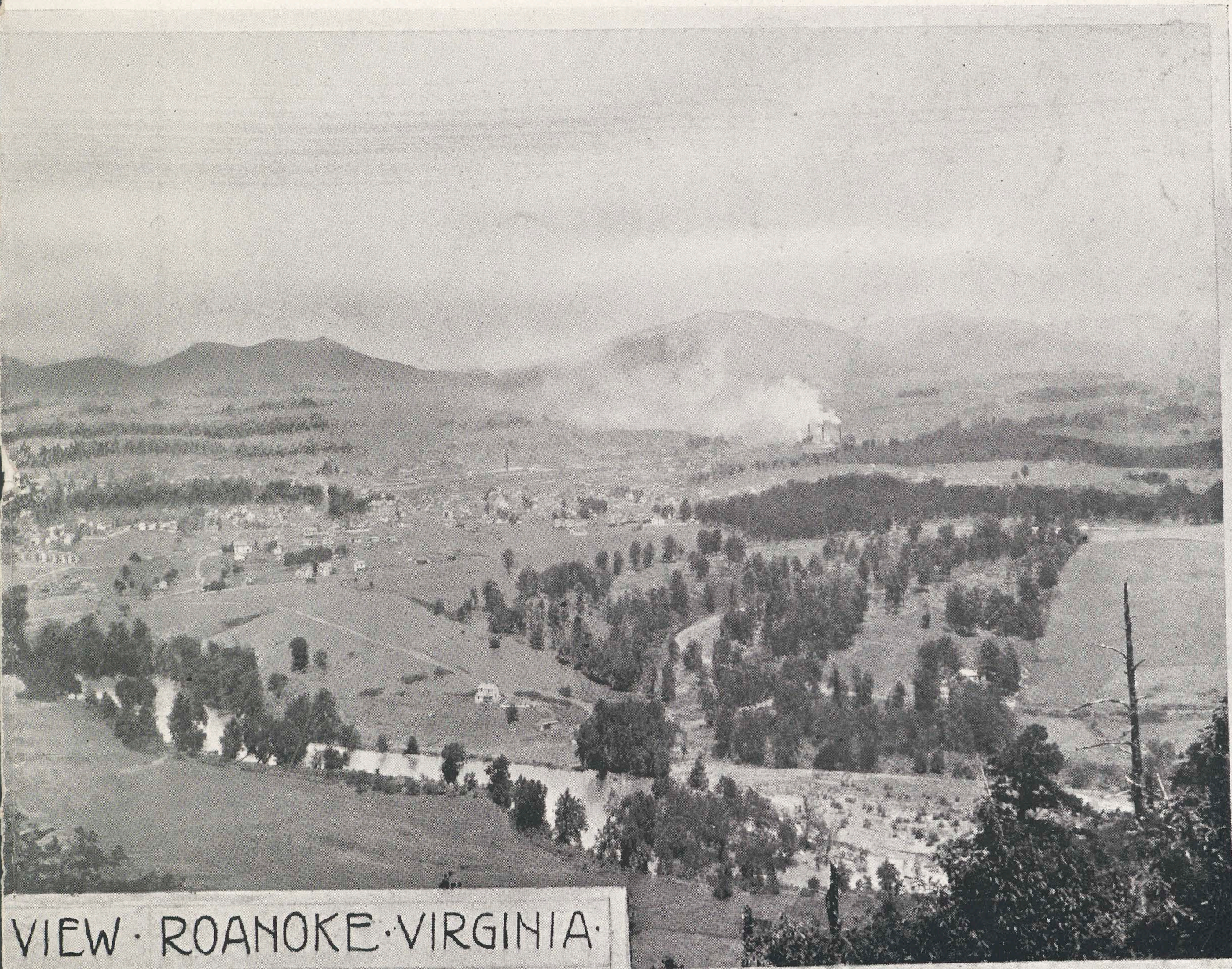
MONUMENT - GIVEN TO THE CITY BY F.J. KIMBALL.

ST. PAUL, RHODE ISLAND, N.H.

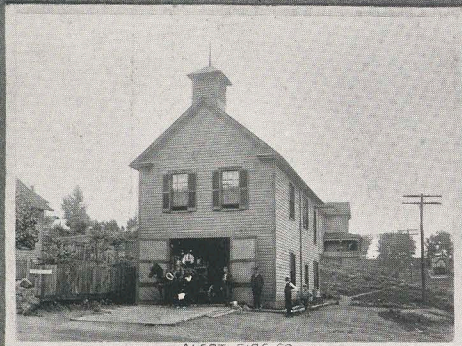


PHOTOGRAPHIC BIRD'S-EYE

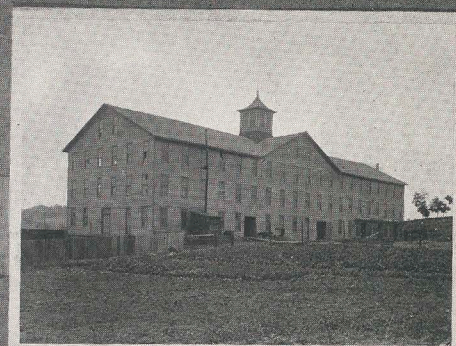
•STONE • ROANOKE • VA•



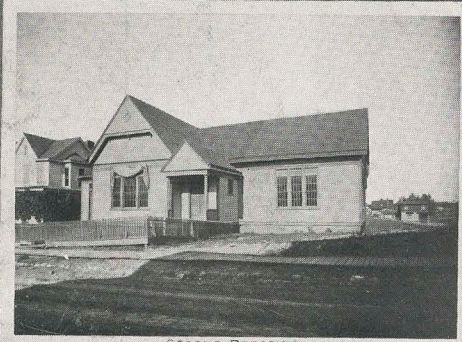
The above Photographic Reproduction does not begin to do justice to the real picture, nor does it show the detail, nor give a proper idea of the Business Houses or Residences. At the center of the picture it covers a distance of about five or six miles.



ALERT FIRE CO.



FERTILIZER COMPANY'S BUILDING.



SECOND PRESBYTERIAN



MILLER



BELMONT BAPTIST

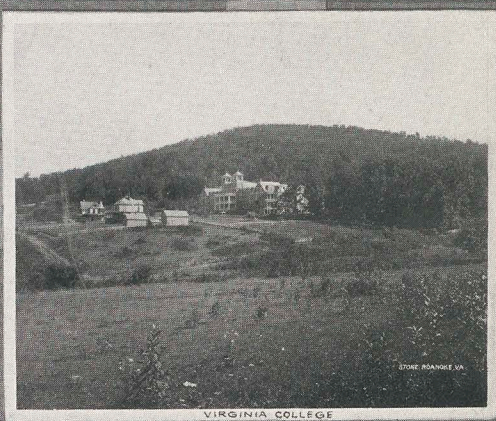


MARKET HOUSE.



W. HUFF.

STONE BRIDGE



VIRGINIA COLLEGE



COL. S. S. BROOKE



UNITED BRETHREN



DR. A. A. CANNADAY



OVER IN BALLYHACK



ST. JAMES HOTEL



OLD RORER HALL



STONE, ROANOKE, VA.

R. R. FAIRFAX



DR. H. W. HARRISON



COL. THOMAS LEWIS



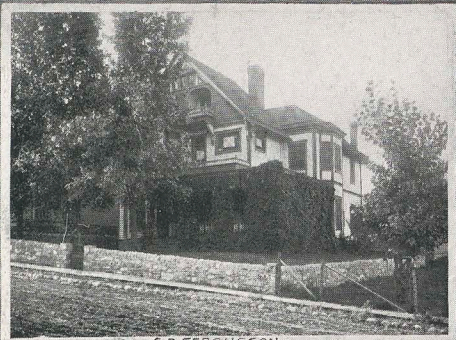
J. N. GAMBILL



DR. J. B. FOSTER



MISS MOORMAN'S



S. D. FERGUSON



FROM THE RYANKE FLOWER SHOW



T. R. TILLET



E. WILE



THE OLD MOORMAN PLACE

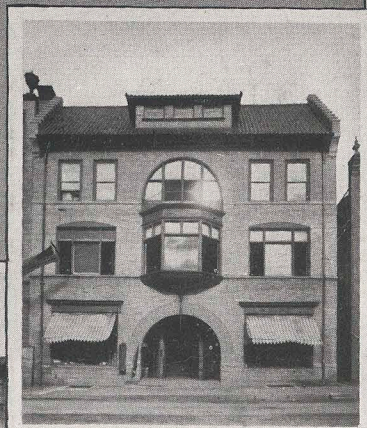


A. S. ASBERRY

STONE, RYANKE, VA.



CATON'S GROCERY



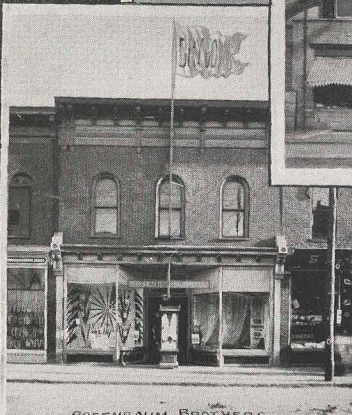
THE JAMISON BUILDING



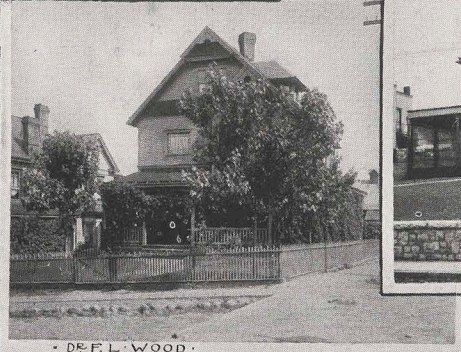
J. B. WORK



THE PRIMITIVE BAPTIST CHURCH



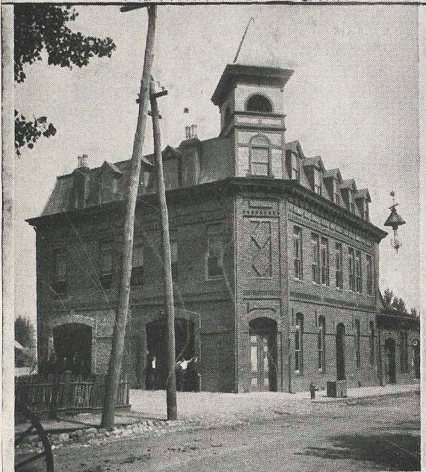
ROSENBAUM BROTHERS



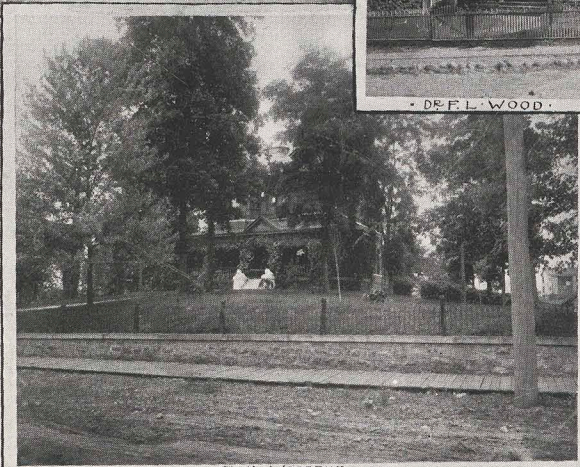
DE F. L. WOOD



JOHN M. SNYDER



FRIENDSHIP FIRE CO.



N. H. WOODRUM

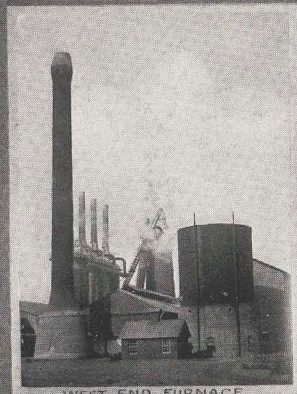


W. A. GLASGOW

STONE ROAD, VA.



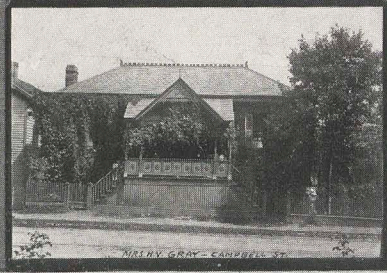
ROANOKE, FROM THE EAST.



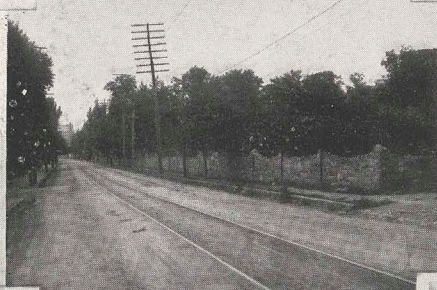
WEST END FURNACE



VIEW BELOW NARROW GAUGE BRIDGE.



MR. H. V. GRAY - CAMPBELL ST.



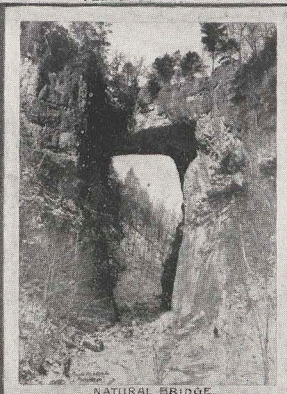
JEFFERSON ST. LOOKING NORTH



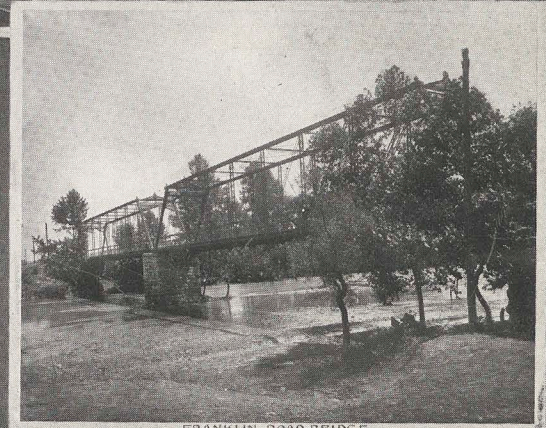
SHADY RETREAT ON THE ROANOKE.



J. H. MARSTELL

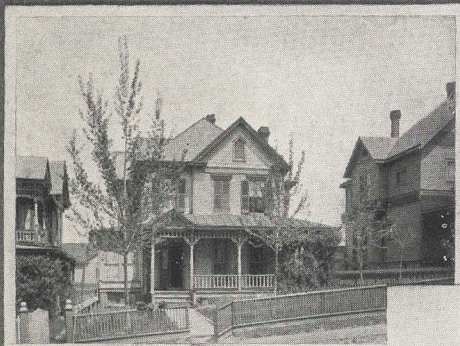


NATURAL BRIDGE.



FRANKLIN ROAD BRIDGE

STONE ROANOKE, VA.



C. C. TALIAFERRO.



ROBT. B. SCOTT.



REBEKAH SANITARIUM.



B. RUST.



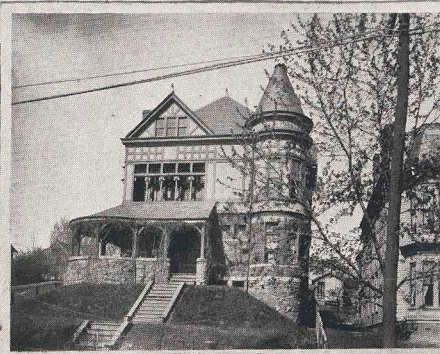
ROANOKE RIVER.



D. J. MEADOWS.



DR. W. S. GREGORY.



T. W. SPINDLE.



DR. GEO. S. LUCK.

STONE, ROANOKE, VA.



BIRDSEYE VIEW LOOKING WEST
FROM THE CORNER OF
CAMPRELL AND JEFFERSON



VIRGINIA AVENUE BRIDGE



BIRDSEYE VIEW OF ROANOKE
FROM MARSTELLARS RESIDENCE



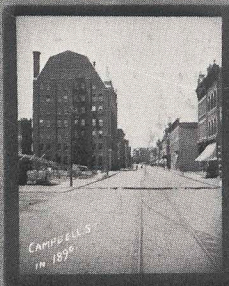
COTTON HILL FOOT BRIDGE



THE TERRY RESIDENCE



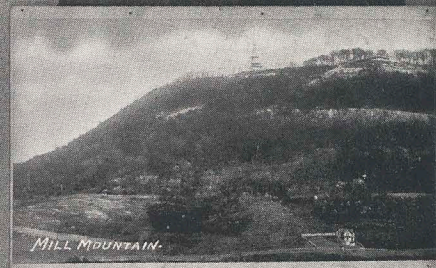
ROANOKE RIVER



CAMPBELL'S
IN 1896



F.B. THOMAS & CO. SALEM AVENUE



MILL MOUNTAIN



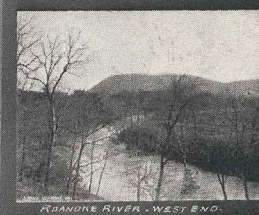
ENTERING ROANOKE



FALLS
OF THE
ROANOKE



CRYSTAL SPRING



ROANOKE RIVER - WEST END



A FORD ON THE ROANOKE RIVER



PONCE DE LEON HOTEL



After
a days
hunt



BIRDSEYE VIEW - ROANOKE

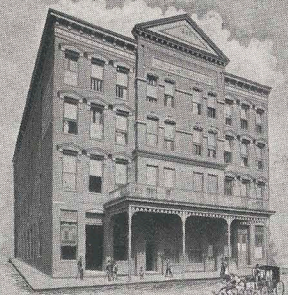


THE EDDY, ROANOKE RIVER

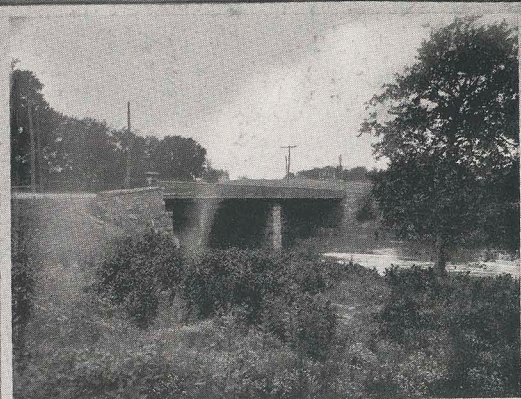
STONE
ROANOKE
VA



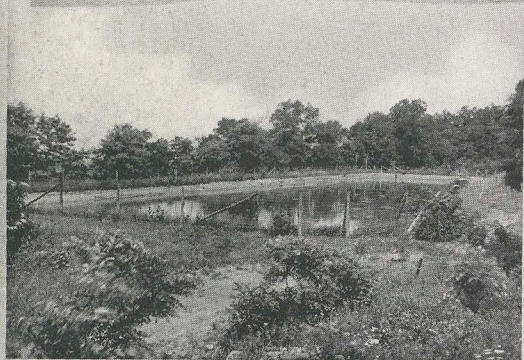
VIEW FROM ALLECHANY INSTITUTE - MILL MOUNTAIN IN BALSAPARRI



HOTEL STRATFORD



WALNUT ST. BRIDGE



RESERVOIR



DRY GOODS STORE



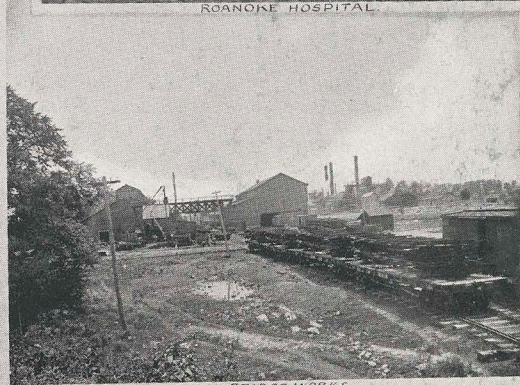
ROANOKE HOSPITAL



CENTRAL MANUFACTURING CO.



O. HOWARD ROYER

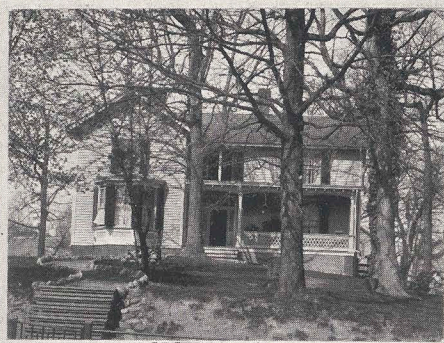


BRIDGE WORKS

STONE, ROANOKE, VA.



C.S. CHURCHILL



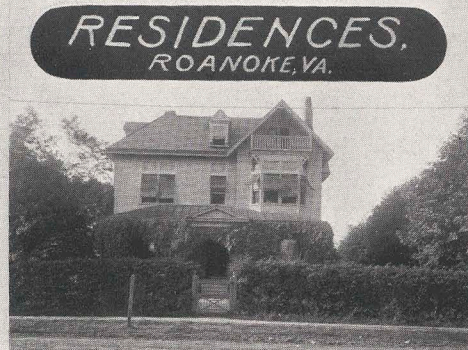
DEGEARANT'S RESIDENCE



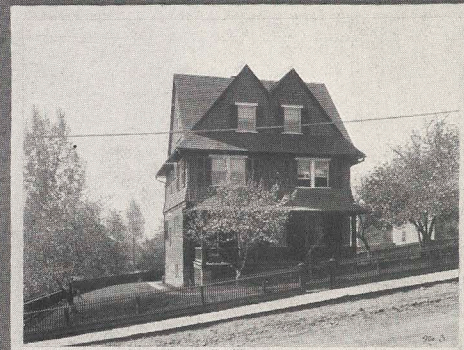
H.D. LAFFERTY



W.W. COE



MRS. HUGER



J.F. WEST



WALTER MACDOWELL



R.A. BUCKNER



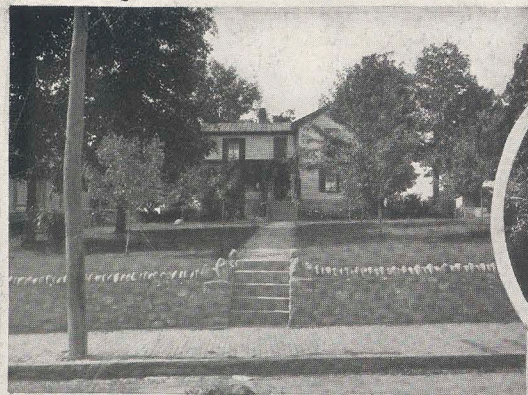
W.H. LEWIS

STONE, ROANOKE, VA.

**RESIDENCES,
ROANOKE, VA.**



Scenes about Hollins Institute, near Roanoke.



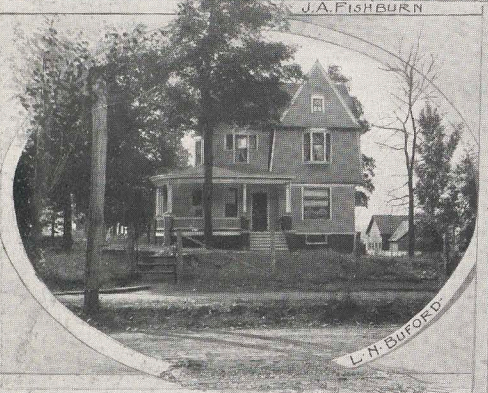
J. A. FISHBURN



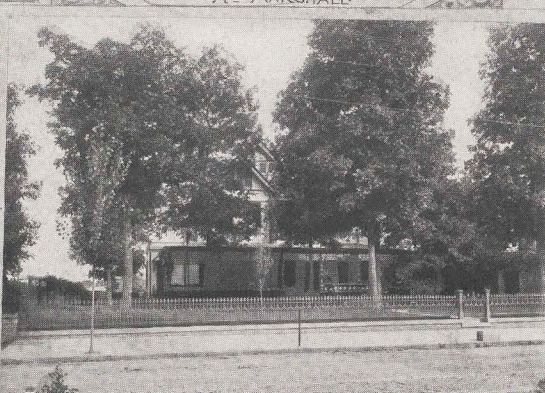
MRS. MARSHALL



R. H. FISHBURNE



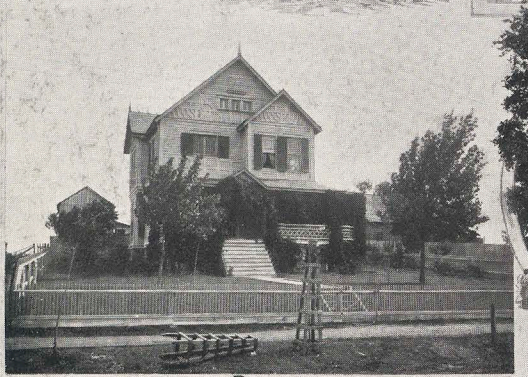
L. N. BUFOOD



J. B. FISHBURNE



W. A. ANDREWS



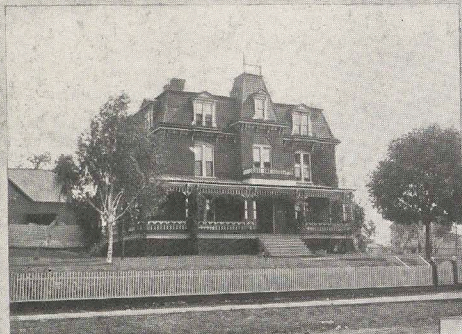
CAPT. BRANSCOMB



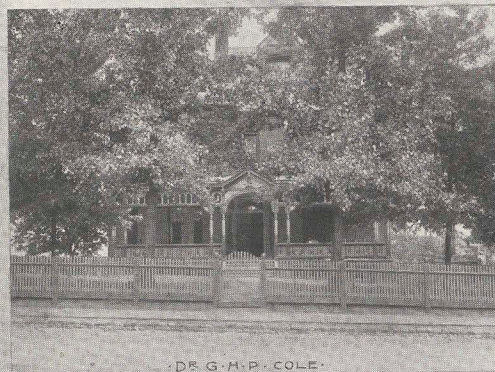
A. J. RANKIN



COL. THOMAS LEWIS



JAS. S. SIMMONS' PROPERTY.



DR. G. H. P. COLE.



L. L. POWELL PROPERTY.



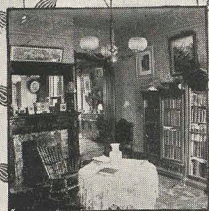
MRS. MINNIE TAYLOR.



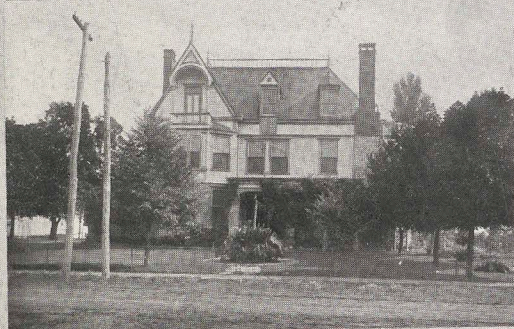
A. L. SIBERT.



D. S. MEADOWS.



DR. J. D. KIRK.
CORNER OF LIBRARY.—PARTITION OF DINING.



THOMAS LOWE.



F. B. THOMAS.

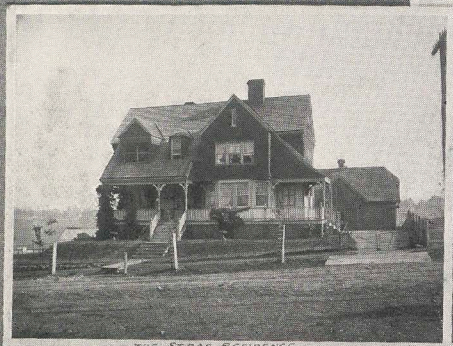
MRS. JANE THOMAS.



DR. J. D. KIRK
PARLOR.—SHOWING ENTRANCE TO LIBRARY.



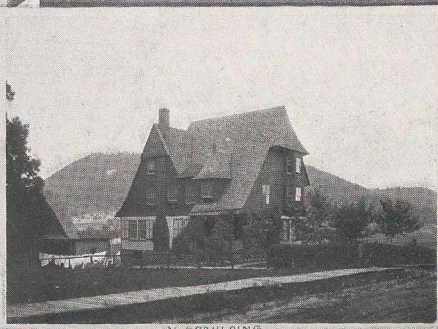
Scenes about Virginia College.



THE STRAS RESIDENCE.



SHEPARDSON CLIFF



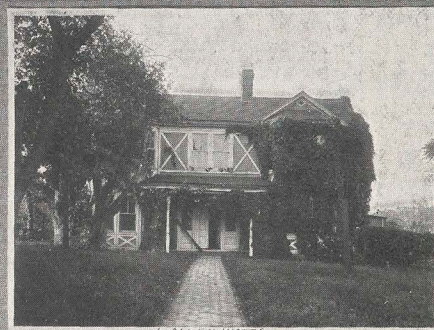
V. SPALDING



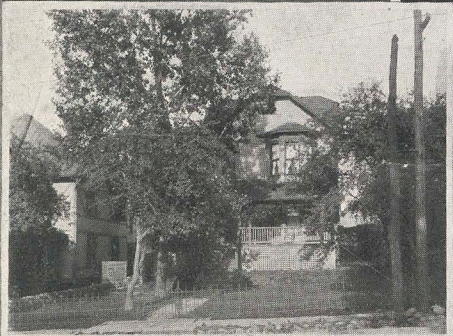
WM. S. MACDOWELL



M. H. ROGERS



J. ALLEN IVATT



A. B. HAMMOND



T. R. SHAWNE



M. MCCLANAHAN

STONE
BRAND
VA.



1882

PHOTO BY J. H. BLAKEMORE

• ROANOKE, 1882 •

1902



PHOTO BY M. F. LANDES

ROANOKE FROM SAME POINT, 1902 •

STONE • ROANOKE, VA.

Virginia
Book Co.
Berryville, Va.