



ROANOKE CITY PUBLIC
LIBRARY SYSTEM

Central Library
Virginia Room

The
ACORN



Final Issue

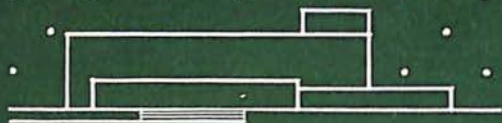
1933

IR
73.75597
T35

JEFFERSON HIGH SCHOOL
ROANOKE, VIRGINIA

VOLUME XIII

NUMBER FOUR



PRESENTED BY

D. E. McQuilkin
to the
Ethel Belle McQuilkin
Memorial Collection

ROANOKE PUBLIC LIBRARY



EX LIBRIS



THE JEFFERSON SENIOR HIGH SCHOOL



THE
ACORN

PUBLISHED BY
THE STUDENT BODY
JEFFERSON SENIOR HIGH SCHOOL
ROANOKE, VIRGINIA

FINAL ISSUE

JUNE, 1933

INTRODUCTION

The Staff has worked long and faithfully to present this annual to the Class of Nineteen Hundred and Thirty-Three. We wish to thank the entire student body for its splendid coöperation with the Staff. We hope this, your yearbook, will meet with your complete approval

THE EDITORS

141263

copy 1

V. Ref. ⁵⁰ 373.755976

J35a

19 33

0 1195 03384081



DEDICATION

*Because of her willing advice, because of her untiring efforts
for our welfare, and because of her ready encouragement
and inspiration, we dedicate this, our yearbook to*

MISS NELLIE SMITHEY



ACORN
BUSINESS



SANDERS



WOODAHL

STAFF
1933



DOWDY



LONG



JONES



LINDSAY



MILLIKIN



BROWN



PATTON



HANCOCK



DICKINSON



BASS

ACORN
LITERARY



NELSON



HAYWARD

STAFF
1933



LANE



PIERCE



DURHAM



COULTER



OULD



CHAPMAN




RUTHERFOORD



COXE



PENDLETON

The  Acorn



MR. W. E. PARSONS
Principal

The Faculty

MR. W. E. PARSONS.....*Principal*

MISS ETHEL WALKER.....*Student Advisor*

MR. G. A. LAYMAN.....*Assistant Principal*

MRS. M. E. MORRISSETT.....*Secretary*



ENGLISH DEPARTMENT

MISS MARY SULLY HAYWARD

MR. L. C. COFFMAN

MISS MIRIAM BOWMAN

MISS ROCHET DUPUY

MR. S. D. BOWMAN

MISS MARY L. GOODE

MISS RUTH BRUGH

MISS NANCY E. LUKENS

MR. R. M. CARPENTER

MISS SARA SPRACHER

MISS CLARA BLACK

MATHEMATICS DEPARTMENT

MISS NELLIE SMITHEY

MR. A. HASH

MR. G. A. BRANSCOME

MR. MAX Q. KELLY

MISS MARY DELONG

MISS EDITH MOORE

MISS ALTO FUNKHOUSER

MISS MABEL NOELL



HISTORY DEPARTMENT

MR. G. A. LAYMAN

MR. J. H. FALLWELL

MISS MARY ELDER BEEBE

MISS SIDNEY PENN

MISS MOLLYE DRINKARD

MISS ROBERTA RUTHERFOORD

MR. D. W. PERSINGER

MISS MARY DUNCAN

MISS REBA DUDLEY



SCIENCE DEPARTMENT

MR. J. P. BOWMAN
 MRS. J. F. BURT
 MR. CLAUDE MOORMAN

MR. W. W. NOESINGER
 MR. H. FELIX SANDERS
 MR. H. L. WOMACK

FOREIGN LANGUAGE DEPARTMENT

MISS SALLIE LOVELACE
 MISS EMILY BARKSDALE
 MR. R. M. CARPENTER

MRS. J. H. FALLWELL
 MISS RHODA NOELL
 MISS EDITH VERRAN

MISS DOROTHY COULTER



COMMERCIAL AND INDUSTRIAL ARTS

MRS. MAUDE STONER
 MISS MARGARET BITTERMAN
 MISS MARY ELDER BEEBE
 MISS EUNICE BOHANNON
 MISS VIRGINIA CALDWELL
 MISS MARY EVERITT
 MR. W. H. WRIGHT
 MR. ROGER MARTZ
 MR. R. C. MOTLEY

NON-DEPARTMENTAL

MRS. LOU G. BOLLING.....*Attendance*
 MISS BLANCHE HURLEY.....*Music*
 MISS FRANCES MILLER.....*Librarian*

MISS MARY FAWCETT.....*Cafeteria*
 MISS PAGE HARRISON.....*Athletics*
 MR. A. D. HURT.....*Athletics*



CLASSES

Builders

ON A SHEER, lofty pinnacle God stands alone—
Overlooking the building of our souls.
As once He watched our childish actions,
Now He sees our lives unfold.

He knew of every faltering step, any attempted word, each new thought,
Blazing its path across the untrodden passages of our minds.
He, alone, of all our world, understands the fashionings of our souls:

How each new idea was made,
How each virgin plan was laid—
How we grasped and boldly claimed
Dreams and ideals freshly gained.

So up we rear, tier on tier,
A monument of every transient year,
Framed of thoughts, actions, dreams—even tears,
Until we see, upon unmutable heights,
The goal to which we press—it's beckoning
From the gleaming towers of God's divine fortress.

Perfect our plans, O Father, lift us higher
Upon our own small peaks.
For unbounded vistas stretch before us—
In alien glories that Youth may seek.

But conscious, O God, that no matter where
We may be,
Deep within our private hearts,
We are still just children to Thee.

—RACHEL PENDLETON, '33.



The Senior Class

OFFICERS

<i>President</i>	LEWIS KEEN
<i>Vice President</i>	JOE KEITH
<i>Secretary</i>	MARION DURHAM
<i>Treasurer</i>	EARL RASMUSSEN



MARY FRANCES ADAMS

Attractive, stylish, versatile

COMMERCIAL

WILLIE DOUGLAS ADAMS

Witty, friendly, fun loving

ACADEMIC NATIONAL BUSINESS COLLEGE

IRIS LUCILLE AKER

"Irish"

Cute, attractive, humorous

Expression, '30, '31; Choral Club, '30, '31

COMMERCIAL

ROGER WINSTON ALLEN

Attractive, clever, friendly

President, Student Body, '32, '33; Big Brothers, '32, '33; Hi-Y, '31, '32, '33; Hi-Y Cabinet, '32, '33; Prefect Council, '32, '33; Student Council, '31, '32, '33; Senior Presentation Committee; *Roanoke Roman* Staff, '30, '31, '32; Class Mirror; Senior Commencement Program.

ACADEMIC

UNIVERSITY OF VIRGINIA

The Acorn



EUGENE WILSON ALLEY

"Gene"

Energetic, studious, pleasant

ACADEMIC UNIVERSITY OF RICHMOND



MADELINE ALOUF

Humorous, talented, generous

Choral Club, '32, '33; Expression, '32; Glee Club, '32, '33

ACADEMIC GREENSBORO COLLEGE



JOHN NEVILLE AMMEN, Jr.

Cheerful, talented, studious

Boys' Glee Club, '30, '31, '33; Hi-Y, '31, '32, '33; Corresponding Secretary, '32, '33; Big Buddies, '32, '33; Senior Play Committee, '32, '33; *Junior World-News*, '31; Senior Play.

ACADEMIC



EMILY TUBMAN ANDERSON

Capable, generous, friendly

Assistant Editor, *Roanoke Roman*, '32, '33; M. W. L. S., '31, '32, '33; Expression, '31, '32; Girls' Club, '31, '32, '33; Salutatorian.

ACADEMIC





JOHN ANTRIM, JR.

Debonair, charming, immaculate

Student Council, '30, '31; Senior Play; Senior
Announcement Committee

ACADEMIC

UNIVERSITY OF VIRGINIA

IOLA MILDRED ARGABRIGHT

Friendly, sincere, likable

Commercial Club, '30; Choral Club, '32, '33;
Expression Department, '30, '32; Glee Club,
'32, '33.

COMMERCIAL

CARLIS LEONARD ARNN

Amiable, reliable and unassuming

President, Commercial Club, Fall, '31

COMMERCIAL

HAROLD LOUIS ATKINS

"Innocent"

Amiable, witty, thoughtful

ACADEMIC

ROANOKE COLLEGE

OLIVE MAY ATKINS

Amiable, modest, sincere

ACADEMIC

BAPTIST HOSPITAL



WILLIAM RANDOLPH AUSTIN

"Billy"

Cheerful, dependable, industrious

President, Orchestra, Fall, '32; Hi-Y, Fall, '32, '33; Orchestra, '29, '30, '31, '32

ACADEMIC

V. P. I.



DOROTHY BRUCH AYERS

A good sport

ACADEMIC

WILLIAM AND MARY



MARY ELIZABETH AYERS

Jocular, cheerful, companionable

Wisehefu, '31; Expression, '31

ACADEMIC

WILLIAM AND MARY





CECIL P. BALDWIN

"Blondie"

A real pal

CHARLES EDWARD BALTHIS, JR.

"Shrimp"

Serious, likable, considerate

Hi-Y, '31, '32, '33; Senior Mirror, '33; Class Mirror

ACADEMIC

ANNAPOLIS

LAETITIA MEADE BARBOUR

"Tish"

Attractive personality, talented, loving

Student Council, '32, '33; Girls' Club, '31, '32, '33; Expression, '31, '32, '33; Senior Play

ACADEMIC

SWEET BRIAR

ANNA FRANCES BARNES

Attractive, friendly, petite

ACADEMIC

FARMVILLE

DOROTHY E. BARRANGER

"Dot"

Sweet, attractive, lovable

COMMERCIAL



HUGH RAYMOND BARTLETT

"Suction"

Capable, self-reliant, industrious

J. L. S., '31, '32, '33; President, J. L. S. Addition, '31; Junior Class Representative, '31, '32; Sergeant-at-Arms, J. L. S., '32; *Junior World-News*, '31, '32; Reporter, Parliamentary Law Club, '32; Public Speaking, '30, '31, '32.

ACADEMIC

ROANOKE COLLEGE



DOROTHY BROWN BASS

"Dot"

Sweet, friendly, cheerful

G. A. A., '30, '31; Volley Ball Team, '30, '31; Baseball Team, '30, '31; Basket Ball Team, '30, '31; Girls' Club, '32, '33.

COMMERCIAL

BUSINESS



HORACE ANCEL BASS

Artistic, versatile, reserved

ACORN Staff, '33; Senior Play

ACADEMIC

ROANOKE COLLEGE





ALFRED M. BEATTY

"Beatty"

Good-natured, friendly, good sport

ACADEMIC

WILLARD ANTHONY BELCHER

"Slim"

Capable, sweet, attractive

ACADEMIC

V. P. I.

ETHEL PERVIS BELL

ACADEMIC

NANNIE KATHLEEN BENSEN

"Nan"

Amiable, companionable, attractive

Girls' Club, '32, '33

COMMERCIAL

LEWIS ELWOOD BERNARD

"Lew"

Shrewd, handsome, carefree

ACADEMIC

UNIVERSITY OF MEXICO

MARY FRASER BLAIN

"Fray"

Accommodating, sincere, altruistic

Girls' Club, '32, '33; Decoration Committee,
Girls' Club, '32

ACADEMIC

VIRGINIA A. BLAND

"Joan"

Attractive, temperamental, sweet

ACADEMIC

BUSINESS COLLEGE

VINCENT BLOUNT, JR.

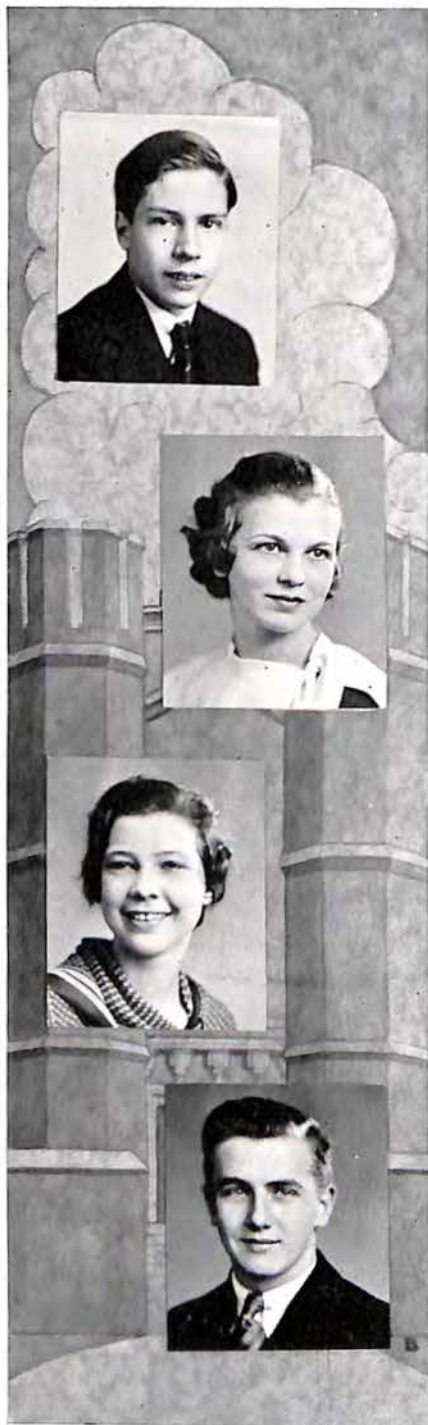
"Pinkey"

Reserved, distinguished, congenial

ACADEMIC

UNIVERSITY OF ALABAMA





C. L. BOLTON, JR.

"Bugs"

ACADEMIC

ROANOKE COLLEGE

CONNIE ALTA BOND

Dignified, attractive, amiable

Choral Club, '31, '32; Expression, Spring, '32

ACADEMIC

HELEN PAULINE BOWEN

Friendly, sweet, capable

Art, '30, '31, '32, '33

COMMERCIAL

WILLIAM PAGE BOWLING, JR.

"Bill"

Attractive, capable, independent

Football, '31, '32; Hi-Y, '32, '33; Hi-Y
Cabinet, '32, '33

ACADEMIC

ROANOKE COLLEGE

CARROLL EDWARD BREEDEN
ACADEMIC



MARY McDONALD BRIGGS

Argumentative, humorous, congenial

Girls' Club, '32, '33; Expression, '30, '31, '32, '33; M. W. L. S., '32, '33; Make-Up, '32, '33; Public Speaking, '30; Choral Club, '30.

ACADEMIC

MIAMI UNIVERSITY



MARGARET CORNELIA BRITTS

Talented, interesting, loving

ACADEMIC

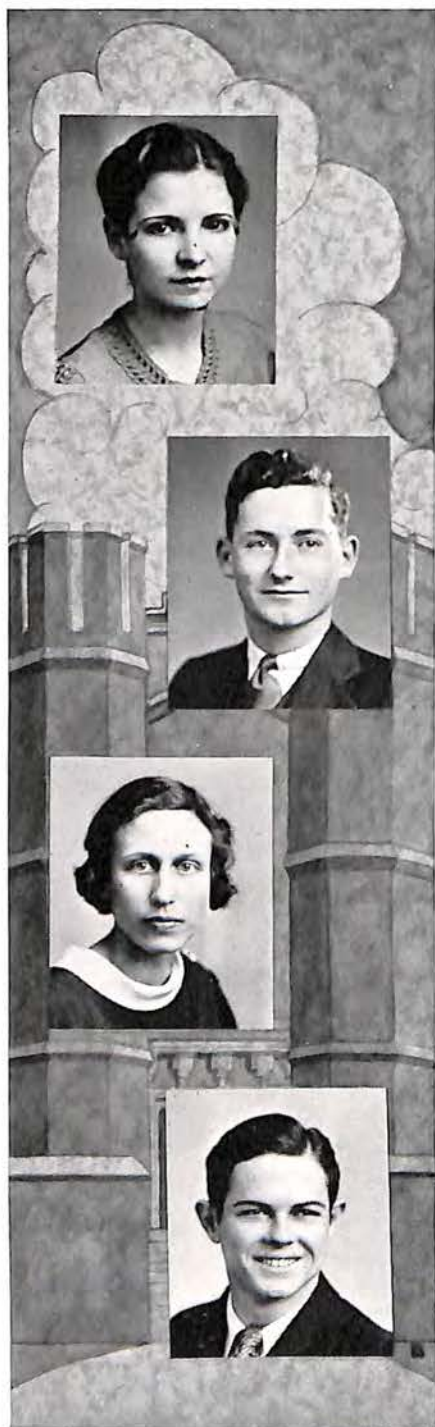


GORDON CLEVELAND BROOKS

Friendly, a pal

COMMERCIAL





MARY LOUISE BROWN

"Weesie"

Attractive, gay, good sport

Student Council, '30, '31; Wischefu, '31; Expression, '30, '31; Choral Club, '31; Girls' Club, '31; Commercial Editor, ACORN, '33.

COMMERCIAL

GILBERT EUGENE BUTLER

"Bob"

Hi-Y, '31, '32, '33; President, Hi-Y, '32, '33; Hi-Y, Cabinet, Spring, '32; Big Brothers, '31, '32, '33; Student Council, '31, '32; Prefect Council, '32, '33; Football, '31, '32; Clio Club, '31; *Roanoke Roman* Reporter, '30; Senior Class Mirror, Most Attractive; Senior Play.

ACADEMIC

ANNAPOLIS

MARGARET BYRD

Jolly, studious, friendly

Wischefu, '30, '31; Girls' Club, '31, '32, '33; M. W. L. S., '33; Expression, '30; Latin Representative, '33.

ACADEMIC

J. JEFFERSON CAHILL

"Bing"

Genial, charitable, likeable

Football, '31; Swimming Team (Landon High, Jacksonville, Florida, '29, '30)

ACADEMIC

WILLIAM S. CALHOUN, JR.

"Idge"

Vivacious, jolly and friendly

ACADEMIC

V. P. I.

WILLIAM EDWARD CALLOWAY

"Bill"

Sincere, vivacious and pleasing personality

ACADEMIC

V. M. I.

CHARLIE C. CAMP

Independent, good-natured and competent

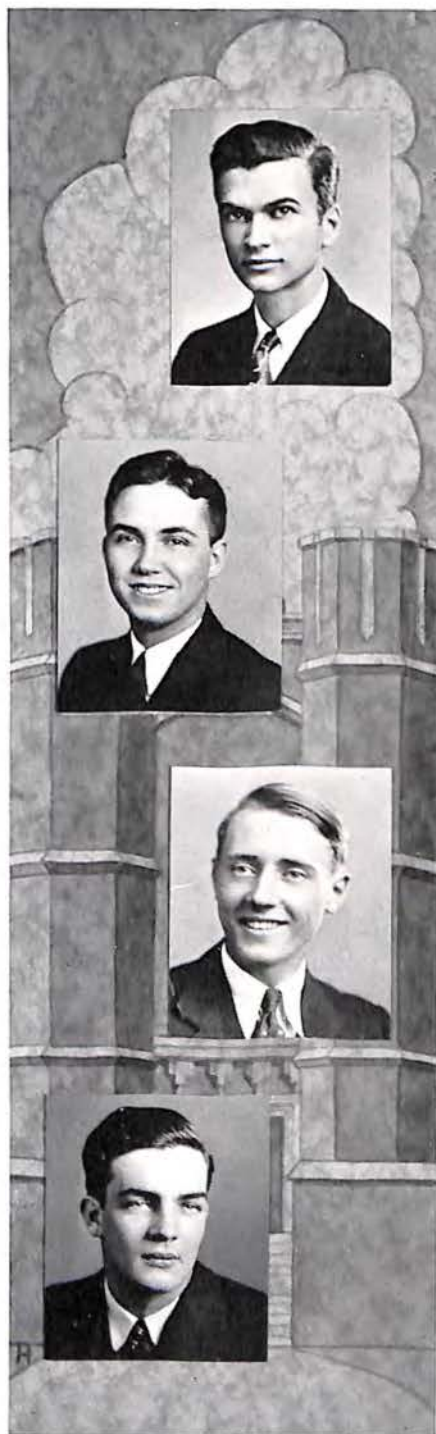
ACADEMIC

HOWARD BERKLEY CANNADAY

Hi-Y, '31, '32, '33

ACADEMIC

ROANOKE COLLEGE





MILDRED FLORENCE CARMINES

"Millie"

Reserved, reliable, naive

ACADEMIC

DUKE

SUE CARY CARPENTER

Understanding, arresting and popular

Wisehefu, '30, '31; Girls' Club, '32, '33; Student Council, '31, '32; Cheer Leader, '32, '33; Senior Class Mirror Committee, '33; Class Mirror.

ACADEMIC

FARMVILLE

WILLIAM BOXLEY CARPENTER

"Billy"

Magnetic, individual, stylish

Expression Club, '29, '30, '31, '32; Senior Presentation, '32; Midget Basket Ball, '31, '32, '33; Expression Play, '33; Mirror Committee, '33.

ACADEMIC

V. M. I.

MARGARET LYNN CARPER

Sweet, dependable, likeable

Chairman, Sports Committee, Wisehefus, '31; G. A. A., '32; Advertisement Committee, M. W. L. S., '32; Recorder, M. W. L. S., '33; Advertisement Committee, Girls' Club, '33.

ACADEMIC

FARMVILLE

NORWOOD GREER CARPER, JR.

"Chris"

Candid, ambitious and talented

Glee Club, '33; Hi-Y, '33; J. L. S., '32

ACADEMIC

AERONAUTICS



DOROTHY PAGE CARR

"Dot"

Girls' Club, '31, '32, '33; Project Committee, '32; Music Committee, '32, '33; Girls' Glee Club, '32, '33; Vice President, '33; M. W. L. S., '31, '32, '33; Class Mirror.

ACADEMIC

PEABODY CONSERVATORY



SAMUEL VENABLE CARRINGTON

Friendly, good sport

Hi-Y, '33

ACADEMIC



VESTA MAE CHEATHAM

Attractive, dignified, studious

Choral Club; Art Class; Glee Club

COMMERCIAL





ELVIN RICHARD CHICK, JR.

"Bud"

Frank, sporting, handsome

Public Speaking, '32, '33; J. L. S., '29

ACADEMIC

WILLIAM AND MARY



BERTHA SLICER CLARK

Affectionate, capable, trustworthy

President of Girl Reserves, '31

COMMERCIAL

BUSINESS COLLEGE



WAYT PHILLIPS CLARK

Athletic, amicable, likeable

Football, '31, '32; Track, '32, '33; Basket
Ball, '33; Hi-Y, '33

ACADEMIC

V. M. I.



DAPHNA BURKS CLAYTOR

"Daffodil"

Dignified, studious, attractive

ACADEMIC

UNIVERSITY OF VIRGINIA HOSPITAL

ALYCE JOYCE CODY

Clever, sincere, popular

Girls' Club, '32, '33; Social Committee; M. W. L. S., '32, '33; *Junior World-News*, '32, '33; News Critic, '33; Assistant News Critic, '32; Class Mirror.

ACADEMIC NORTHWESTERN UNIVERSITY

MABEL REBECCA COCKRELL

"Becky"

Wisehefu Club, '31; G. A. A., '31; Manager, Girls' Volley Ball Team, '31; Girls' Club, '31, '32, '33; Social Committee, Girls' Club, '32, '33.

ACADEMIC HARRISONBURG

NELL LUCILLE COFFEY

Capable, sweet, studious

COMMERCIAL

ALVIN COHEN

"Nutzie"

Vivacious, attractive and friendly

ACADEMIC UNIVERSITY OF MARYLAND





JAMES ERSKINE COLEMAN
Congenial, dependable, attractive

ACADEMIC

ROANOKE COLLEGE

BILL COLEMAN

Studious, ambitious, industrious

ACADEMIC

UNIVERSITY OF MEXICO

WILLIAM OVERBEY COMPTON

"Bill"

Congenial, dependable, witty

ACADEMIC

NOTRE DAME

MAIDA VIRGINIA CONNER

Talented, petite, cute

Choral Club, '32, '33

ACADEMIC

WILLIAM WARREN ALBERT COULTER

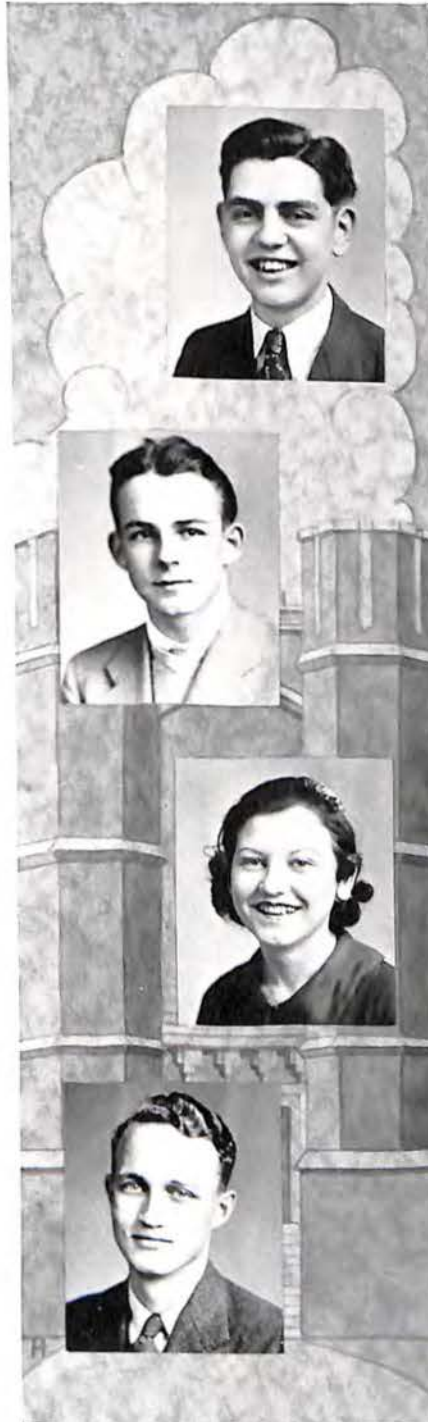
"Boots"

Industrious, capable, dependable

Boys' Choral Club, '31, '32, '33; Boys' Glee Club, '32, '33; Secretary-Treasurer, '32; Vice President, '33; Public Speaking, '31, '32, '33; J. L. S., '31, '32, '33; Cabinet, '32; Business Manager, *Roanoke Roman*, '32, '33; ACORN Business Staff, '31, '32; ACORN Literary Staff, '32, '33; Quill and Scroll, '33; Valedictorian, '33.

ACADEMIC

ROANOKE COLLEGE



JOSEPH WENTWORTH COXE, III

"Joe"

Casual, cosmopolitan, adept

ACORN Staff; Quill and Scroll; *Roanoke Roman* Staff '31; Secretary, '32, '33; Student Council, '31, '32, '33.

ACADEMIC

UNIVERSITY OF VIRGINIA

MAYBELLE GERTRUDE CRAWFORD

"May"

Jovial, congenial and lovable

ACADEMIC

C

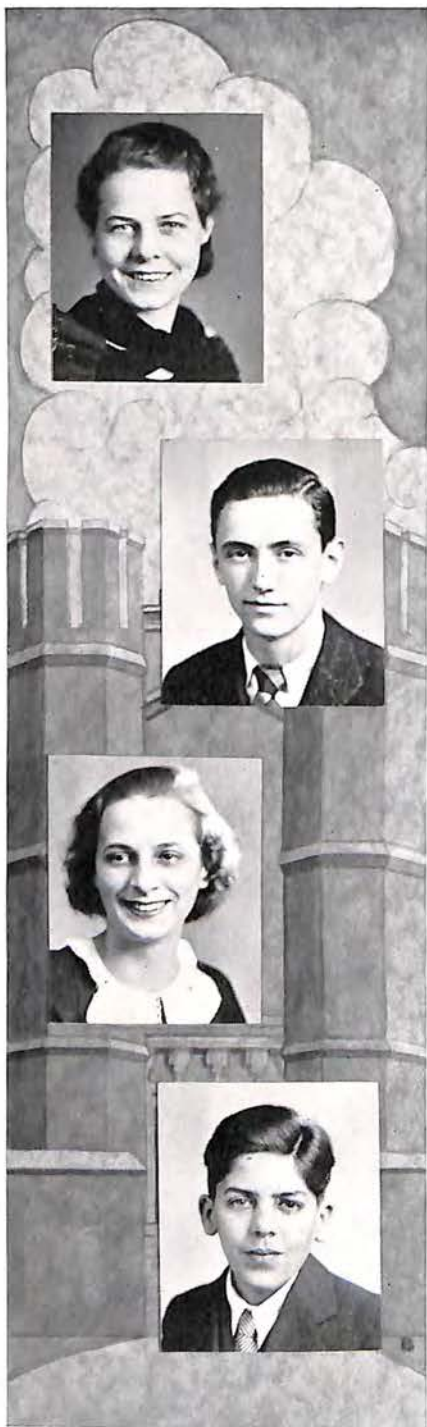
ROY GILL CREASY

"Creeping"

Amiable, studious, witty

Golf Team, '31, '32, '33

ACADEMIC AND COMMERCIAL ROANOKE COLLEGE



FRANCES CRINER

"Frankie"

Invincible, dependable, different

G. A. A.

COMMERCIAL



RICHARD BENSON CROWLEY

"Dick"

Independent, fascinating, debonaire

ACADEMIC

SOUTHERN CALIFORNIA



SARAH ELIZABETH CUNDIFF

Subtle, sedate, sophisticated

Wisehefu; M. W. L. S.

ACADEMIC

JOHNS HOPKINS



WINFRED KEITH CUNDIFF

"Winnie"

Petite, studious and intellectual

J. L. S., '33; Public Speaking, '32; Midget
Basket Ball Team, '32

ACADEMIC

V. P. I.

J. T. DAME

"Jimmie"

Formerly of Salem High and Greenbrier
Military School

ACADEMIC UNIVERSITY OF ALABAMA

LILY TAYLOR DAVIDSON

"Lil"

Amicable, capable and sedate

Wisehefu, '30, '31; Girls' Club, '32, '33; M.
W. L. S., '31, '32, '33; Choral Club, '33; Ex-
pression, '30; Clio Club, '31; Senior Play.

ACADEMIC RANDOLPH-MACON

GEORGE WILLIAM DAVIS

Good sport, generous, reliable

Member of Orchestra

ACADEMIC ROANOKE COLLEGE

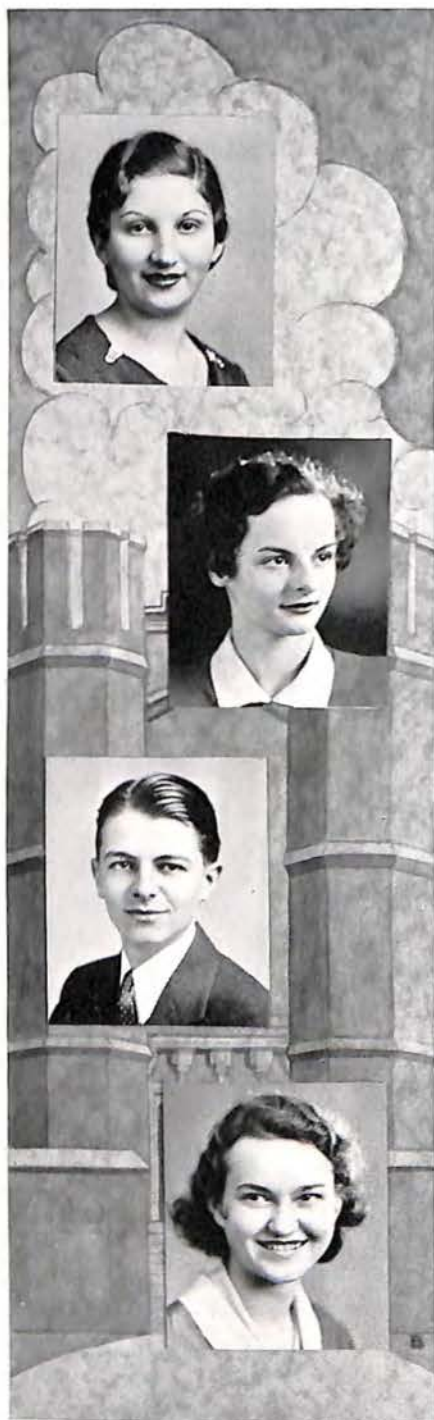
IMA STELLA DEANS

Attractive, friendly and sincere

Wisehefu, '31; Girls' Club, '32, '33; Member-
ship; Expression, '32, '33; Treasurer, '33; M.
W. L. S., '33; Decoration.

ACADEMIC EAST RADFORD





ADA ELLA DIAMOND
Cute, ambitious and sincere
 Choral Club, '32, '33
 COMMERCIAL

ANNA VIRGINIA DICKERSON
"Jinks"
Capable, magnetic and sincere

Chairman, Presentation Committee; Girls' Club, '31, '32, '33; M. W. I. S., '31, '32, '33; Glee Club, '31, '32, '33; Choral Club, '31, '32, '33.
 ACADEMIC WILLIAM AND MARY

MILLER A. DILLARD
"Millie"
Capable, genial, smooth

ACADEMIC WASHINGTON AND LEE

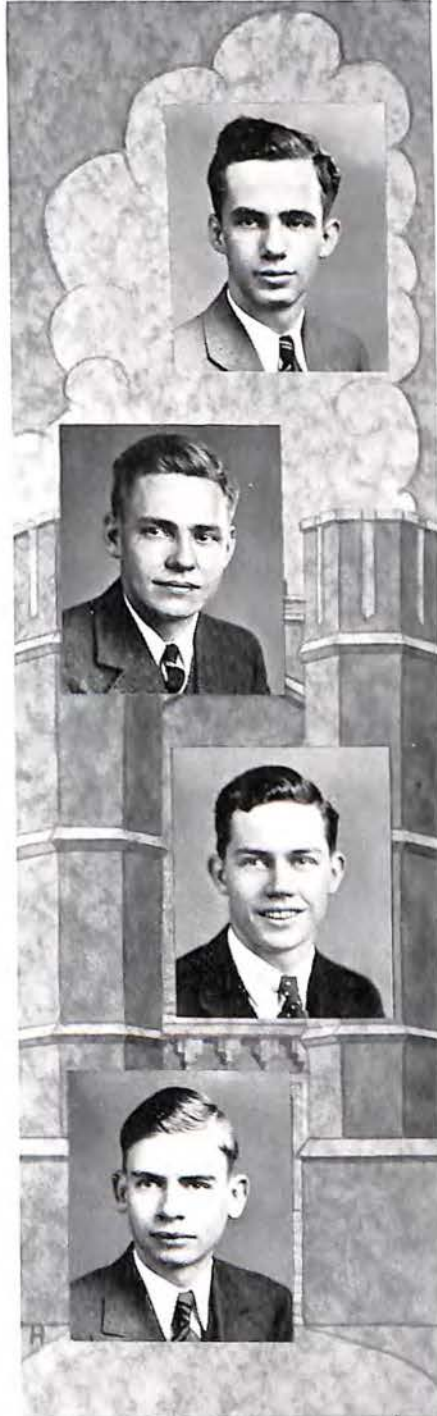
BARBARA ELLEN DIXON
"Babs"

Winsome, naive, dulcis
 Girls' Club, '31, '32; Choral Club, '32, '33;
 Expression, '32, '33
 ACADEMIC WILLIAM AND MARY, RICHMOND DIV.

KARL DOERING

ACADEMIC

V. P. I.



JAMES ASHFORD DOVE, JR.

"Mother"

Melancholy, attractive and jolly

ACADEMIC

UNIVERSITY OF ALABAMA

HORACE W. DOWDY

Witty, pleasing personality and cheerful

J. L. S., '32; Choral Club, '31, '32, '33; Boys' Glee Club, '33

ACADEMIC

ROANOKE COLLEGE

RUFUS EDWARD DOWDY

"Ed"

Versatile, scholarly and idealistic

President, J. L. S., Fall, '32; Vice President, Spring, '32; J. L. S., '30, '31, '32, '33; Student Council, '30, '31, '32, '33; Literary Teams-Debating, '32; Public Speaking, '33; *Roanoke Roman* Staff, '30, '31, '32; Business Manager, '31, '32; Circulation Manager, *ACORN*, '32, '33; Assignment Editor, *Junior World-News*, '33; Hi-Y, '32, '33; Big Buddie, '33; Senior Commencement Program.

ACADEMIC

UNIVERSITY OF VIRGINIA



CHARLES WILLIAM DOWNS

"Chass"

Jovial, congenial and helpful

J. L. S., '30, '31, '32, '33; Expression, '31, '32; *Junior World-News*, '32, '33; Organization Editor, '32, '33; Quill and Scroll, '33; Senior Mirror Committee.

ACADEMIC

V. P. I.

HERBERT DOWNS

ACADEMIC

ROANOKE COLLEGE

JOSEPH EDWIN DRISCOLL

"Ed"

Quiet, conservative and assured

ACADEMIC

ROANOKE COLLEGE

MARIAN RUTH DURHAM


Versatile, capable and talented

Treasurer, Sophomore Class, '31; Treasurer, Wisehefu Club, '31; ACORN Staff, '31, '32, '33; M. W. L. S., '31, '32, '33; Chairman, Publicity Committee, Spring, '32; President, Fall, '32; Chairman, Social Committee, Spring, '33; Girls' Club, '32, '33; Senior Mirror, "Most Capable"; Debating Team, '32, '33; Booster, '32, '33; Quill and Scroll, '32, '33; Treasurer; Senior Commencement Program.

ACADEMIC

UNIVERSITY OF RICHMOND

The Acorn



HAZEL LEE EADES

"Pinky"

Attractive, dainty, winsome

Choral Club, '30, '31

ACADEMIC

FREDERICKSBURG

ESTELLE EDDY

Attractive, temperamental, sweet

G. A. A., '30, '31, '32, '33; Vice President, '30, '31; Captain, Volley Ball, '32; Captain, Baseball, '32; Baseball Manager, '32; Tennis, Basket Ball, Volley Ball, Baseball Teams, '31, '32, '33.

ACADEMIC

RANDOLPH-MACON

ANNAH LEE ELMORE

"Pris"

Competent, attractive, friendly

Student Council, '30, '31; M. W. L. S., '30, '32, '33; Reporter, '33; Quill and Scroll, '32, '33; Vice President, '33; *Junior World-News*, '31, '32, '33; Sports Editor, '31, '32; Assistant Editor, '32; Organization Editor, '33.

ACADEMIC

NATIONAL BUSINESS COLLEGE

VERA ENGLISH

"V"

Faithful, amiable, mischievous

ACADEMIC

ART





EUGENIA URBANE EPPERLY

"Gene"

Cheerful, conscientious, altruistic

M. W. L. S., '31, '32, '33

ACADEMIC

DOROTHY COLLEVILLE ETHRIDGE

"Dot"

Witty, capable, sweet

G. A. A., '31, '32; Wischegu, '31, '32; Girls' Club, '32, '33

ACADEMIC

UNIVERSITY OF ROCHESTER

BETTY JANE FACKLER

Sweet, attractive, dependable

Expression, '31, '32; Girls' Club, '32, '33

ACADEMIC

MARGARET OSSIAN FALLIS

"Peggy"

Animated, mignon, appealing

Girls' Club, '30, '31; Expression, '32, '33; Glee Club, '32, '33; Librarian, '33; Senior Play Committee.

ACADEMIC

MEDICAL COLLEGE

CHARLES MASON FALLS

ACADEMIC



JANET FARIS

Sedate, sweet, artistic

Wisehefu Club, '30, '31; Girls' Club, '31, '32, '33; M. W. L. S., '32, '33; Art, '31, '33

ACADEMIC

ROANOKE COLLEGE



FLORENCE FELTY

ACADEMIC



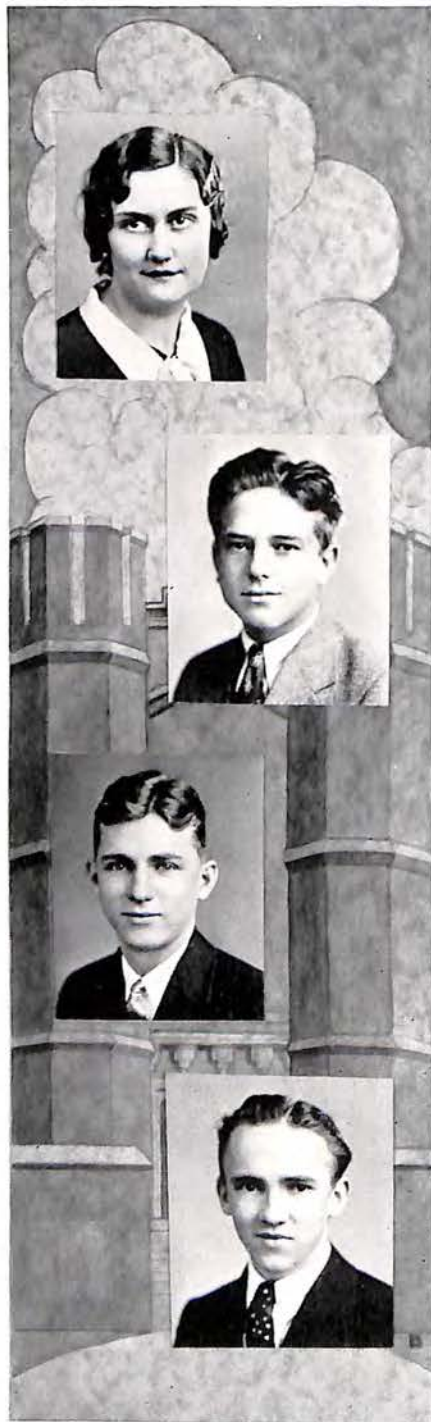
ETHILENE MARY FLEISHMAN

"Jack"

Sweet, jolly, trustworthy

COMMERCIAL





DOROTHY KATHERLINE FERGUSON

"Dot"

Striking, sweet, understanding

Orchestra, '31, '32, '33

COMMERCIAL

JACK PALMER FISHWICK

Analytical, erudite, forceful

J. L. S., '31, '32, '33; *Junior World-News*, '31, '32, '33; Sports Editor, '32; Organizations, '33; Quill and Scroll, '33; Expression, '31, '32; Debating Team, '33.

ACADEMIC

ROANOKE COLLEGE

HORACE FITZPATRICK

"Fitz"

Magnanimous, cheerful, sentimental

ACORN Advertising Team, '31; Assistant Manager, Football Team, '29, '31, '32; Manager, Football Team, '30; Manager Basket Ball Team, '30.

ACADEMIC

ROANOKE COLLEGE

CARL B. FLORA

Sincere, dignified, competent

ACADEMIC

ROANOKE COLLEGE

The Acorn

CHARLES CECIL FLORA

Big-hearted, friendly, business-like

Hi-Y Club; Acorn Advertising Team

ACADEMIC

ROANOKE COLLEGE



VERA ELIZABETH FORBES

"Vee"

Tactful, vivacious, genial

ACADEMIC

NURSING



HELEN ELIZABETH FORE

"4"

Original, trustworthy, witty

ACADEMIC

EAST RADFORD



RACHEL BLONDELLE FOUTZ

"Blondie"

Petite, attractive, capable

Choral, '28, '29; Expression, '28, '30; Secretary, Sophomore Class, '30, '31; Glee Club, '32; Dramatic Club, '31, '32; Choral, '33.

ACADEMIC

WILLIAM AND MARY





DANIEL PHILLIP FRANKLIN

"Dan"

Witty, jolly, genial

ACADEMIC

V. P. I.

EBEN NELMS FRANTZ

"Pete"

Hi-Y, '33; Orchestra, '31

ACADEMIC

ROANOKE COLLEGE

KATHERINE LOUISE FRANTZ

"Ease"

Sweet, friendly, understanding

Girls' Club, '31, '32, '33; M. W. L. S., '31, '32; Wischegu Club, '30, '31

COMMERCIAL

NATIONAL BUSINESS COLLEGE

MINNIE BEATRICE FRASER

Dependable, true, companionable

Expression, '32; Girls' Club, '32, '33

ACADEMIC

NATIONAL BUSINESS COLLEGE

LUCY MADELINE FRINGER

Dependable, witty, winsome

Expression, '31; Wisehefu, '32; Girls' Club,
'32, '33

ACADEMIC

AUDREY FURROW

Sympathetic, attractive, sincere

Girls' Club, '31, '32, '33; Membership Com-
mittee, M. W. L. S., '32, '33; Senior Mirror
Committee; Class Mirror.

ACADEMIC

RANDOLPH-MACON

BESSIE LEE FURROW

"Bess"

Attractive, amiable, capable

COMMERCIAL

JOSEPHINE GALE

"Joe"

Regal, conscientious, refreshing

Treasurer, Girls' Club, '32, '33; G. C., '31,
'32, '33; Booster Club, '32, '33; Secretary-
Treasurer, Booster Club, '32, '33; Glee Club,
'31, '32, '33; Secretary, Glee Club, '32; M.
W. L. S., '31, '32, '33.

ACADEMIC

NATIONAL PARK SEMINARY





AUDREY MAY GARNETT

Jolly, peppy and a true pal

COMMERCIAL

ANNE MACDOWELL GARRETT

Delightful, attractive

ACADEMIC

GUNSTON HALL

FRANCES GARRETT

Cute, clever, coy

ACADEMIC

ROANOKE COLLEGE

RUBY MAE GAULDIN

Friendly, quiet, willing

COMMERCIAL

JAMES JEWEL GEARY

Friendly, capable, attractive

Hi-Y, '32, '33

ACADEMIC

WASHINGTON AND LEE

JAMES DOUGLAS GEMMELL

"Jim"

Amicable, industrious, talented

Boys' Choral, '31, '32, '33; Boys' Glee Club,
'32, '33

ACADEMIC

V. P. I.

GEORGE ARTHUR GILLIAND

Jolly, friendly, humorous

Boys' Choral, '31, '32, '33; Boys' Glee Club,
'31, '32, '33; President, Glee Club, '32, '33

ACADEMIC

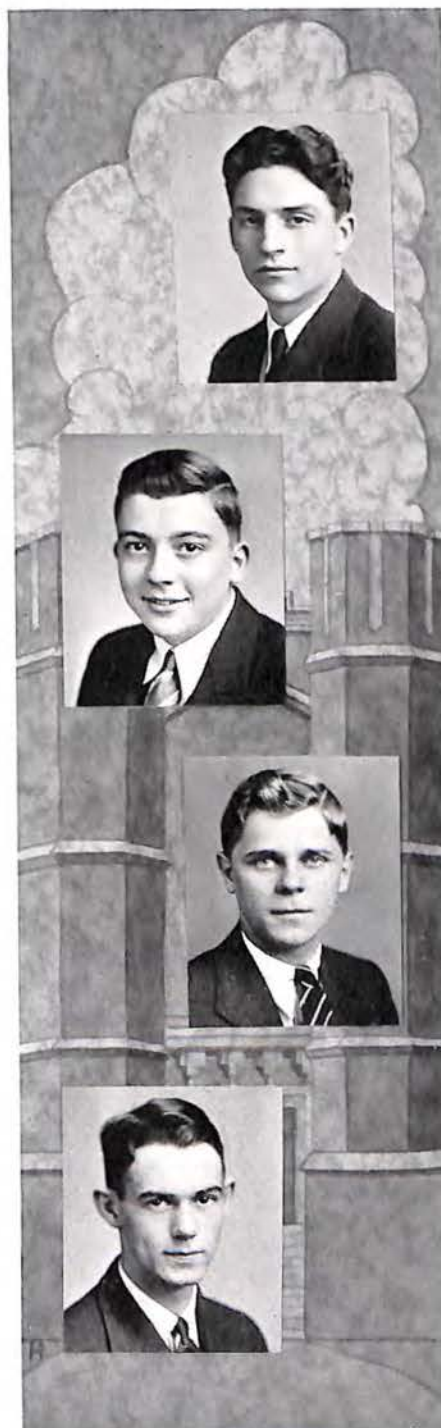
MOODY'S BIBLE SCHOOL

CORBIN GLASS

Attractive, jolly, interesting

ACADEMIC

UNIVERSITY OF MICHIGAN





MILDRED GOFF

"Bumps"

Combustible, witty, snudgy

Girls' Club, '33; Expression, '32; Public Speaking, '32

ACADEMIC

ROANOKE COLLEGE



VIRGINIA BENONI GOGGIN

Lovable, dignified, capable

Choral Club, '31, '32; M. W. L. S., '31, '32, '33; *Junior World-News*, '32, '33

ACADEMIC

ROANOKE COLLEGE



ROBERTA GOODYKOONTZ

"Bobby"

Impulsive, vivid, assured

ACADEMIC

ROCKFORD



ELIZABETH GOSNEY

"Lib"

A good sport, sweet, lovable

COMMERCIAL

NATIONAL BUSINESS COLLEGE

NED GOUGH

Genial, athletic, sincere

Hi-Y, '32, '33; Hi-Y Cabinet, '32, '33; Vice President, Sophomore Class, '31; Football, '31, '32; Track, '31, '32, '33; Chairman, Hi-Y Membership Committee.

ACADEMIC

V. M. I.

HELEN VIRGINIA GOUGH

Poised, striking, fastidious

Student Council, '30, '31, '32, '33; Girls' Club, '30, '31, '32, '33; Boosters, '31, '32, '33; M. W. L. S., '31, '32; Class Mirror; Senior Announcements Committee.

ACADEMIC

HOLLINS

ELEANOR BURWELL GRAFF

Decorous, competent, unassuming

Boosters, '32, '33; Girls' Club, '31, '32, '33; Cabinet, '32, '33; M. W. L. S., '31, '32, '33; Treasurer, '32; President, '33; Girls' Glee Club, '31, '32, '33; Vice President, '32; Expression, '31, '32, '33; Vice President, Parliamentary Law Club, '32; Senior Mirror Committee; Class Mirror.

ACADEMIC

HOLLINS

ROSALIE CLAIRE GRAVELY

"Rhodie"

Attractive, witty, sincere

Expression, '31; Choral, '31; Girls' Club, '31, '32

COMMERCIAL

STENOGRAPHER





FOREST WATSON GRAY, JR.

"Boots"

Odd, forceful, progressive

J. L. S., '31, '32

ACADEMIC

EMORY AND HENRY

VIVIAN VIOLA GREGORY

Quiet, capable, sweet

ACADEMIC

RADFORD STATE NORMAL

ROBERT LAWSON HAFFEN

"Happy"

Witty, friendly, attractive

Art, '32, '33

ACADEMIC

NATIONAL BUSINESS COLLEGE

VILREE ELIZABETH HALE

"Willie"


Attractive, capable, sweet

G. A. A., '29, '30, '31, '32, '33; President, G. A. A., '32, '33; Secretary, G. A. A., '32; Captain, Girls' Volley Ball Team, '29, '30, '31; Captain, Girls' Basket Ball Team, '29, '30, '31; Captain, Girls' Baseball Team, '29, '30, '31; Girls' Basket Ball, Volley Ball, Baseball Teams, '29, '30, '31, '33; Track Team, '32, '33; Social Committee, '32; Program Committee, '31.

ACADEMIC

BEAUTY CULTURE

The Acorn



CHARLIGNE MARIE HALL

"Baby Ray"

Amiable, jolly, sincere

Dramatics, '28, '29; Choral Club, '28, '29, '30; Expression, '30; Public Speaking, '30, '31, '32; Parliamentary Law, '31, '32; Make-Up, '33; M. W. L. S., '33; Girls' Club, '33.

ACADEMIC

DUKE UNIVERSITY

JOSEPH VINCENT HALEY

"Joe"

Popular, good sport, courteous

Football, '31, '32; Hi-Y, '32, '33

ACADEMIC

V. P. I.

LOUIS HANCOCK

"Luke"

Dynamic, genial and assured

President, Big Buddies, '32, '33; Big Buddies, '30, '31, '32, '33; Hi-Y, '30, '31, '32, '33; Hi-Y Cabinet, '32, '33; Prefect, '31, '32, '33; President, Lee Junior Sophomore Class, '28, '29; Vice President, Junior Class, '31, '32; Assistant Circulation Manager, ACORN, '31, '32, '33; Football, '31, '32, '33; Glee Club, '31, '32, '33; Chairman, Mirror Committee, '33.

ACADEMIC

EMORY AND HENRY

MARY ANN HARMAN

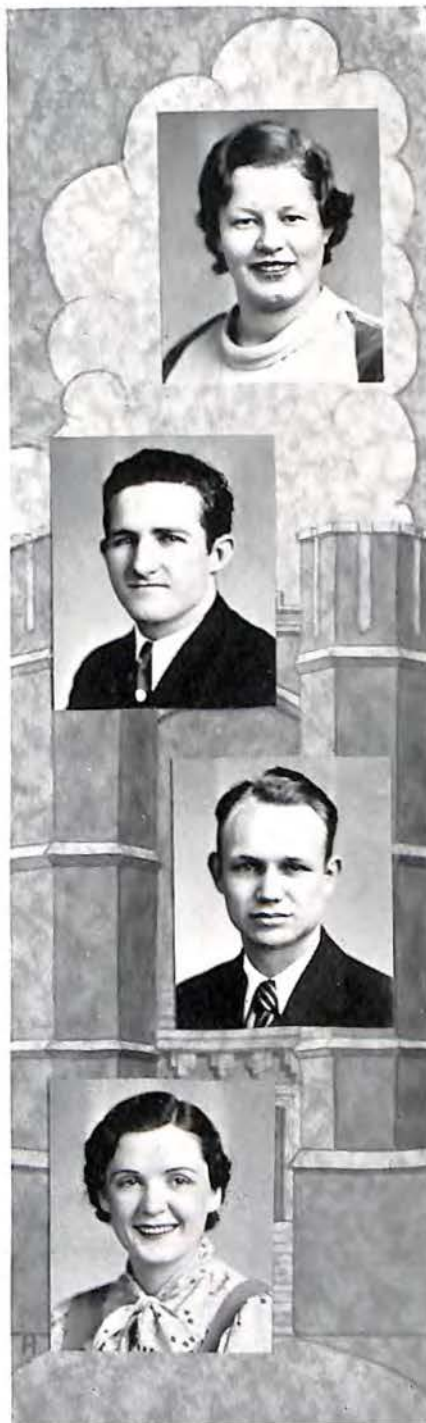
"Red"

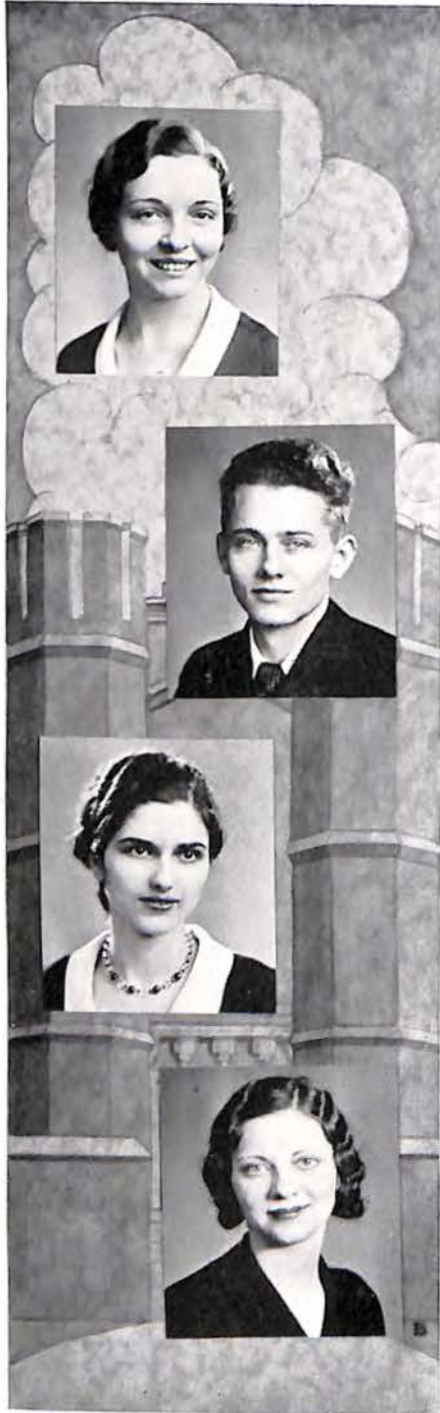
Ambitious, sophisticated, congenial

M. W. L. S., '33

ACADEMIC

PHILADELPHIA GENERAL HOSPITAL





RACHAEL JEANETT HARRELL

Attractive, smiling, carefree

Student Council, '31, '32; Expression, '31, '32; Treasurer, '32; Make-Up, '31

COMMERCIAL

HOWARD SMITH HARRIS, JR.

"Johnny"

Congenial, sincere, ambitious

Student Council, '29, '30

ACADEMIC

ROANOKE COLLEGE

MARY ZEPHINAH HARRISON

Friendly, jolly, happy

G. A. A., '29, '30, '31, '32; Girl Reserves, '29

COMMERCIAL

CLAUDIE MAYE HARTMAN

Sweet, likeable, attractive

COMMERCIAL

JAMES BROWER HAYES

"Jimmie"

Studious, sincere, likeable

J. L. S., '32, '33

ACADEMIC

ROANOKE COLLEGE

HENRY CARL HELBIG, JR.

"Hally"

Studious, scientific, real friend

ACADEMIC

TRI-STATE

MARY LOUISE HERN

Petite, winsome, congenial

Girls' Club, '33; Expression, '31, '32, '33;
Secretary, '32; Reporter, '33; Make-Up, '31,
'32; Senior Exercise Program Committee;
Senior Play.

COMMERCIAL

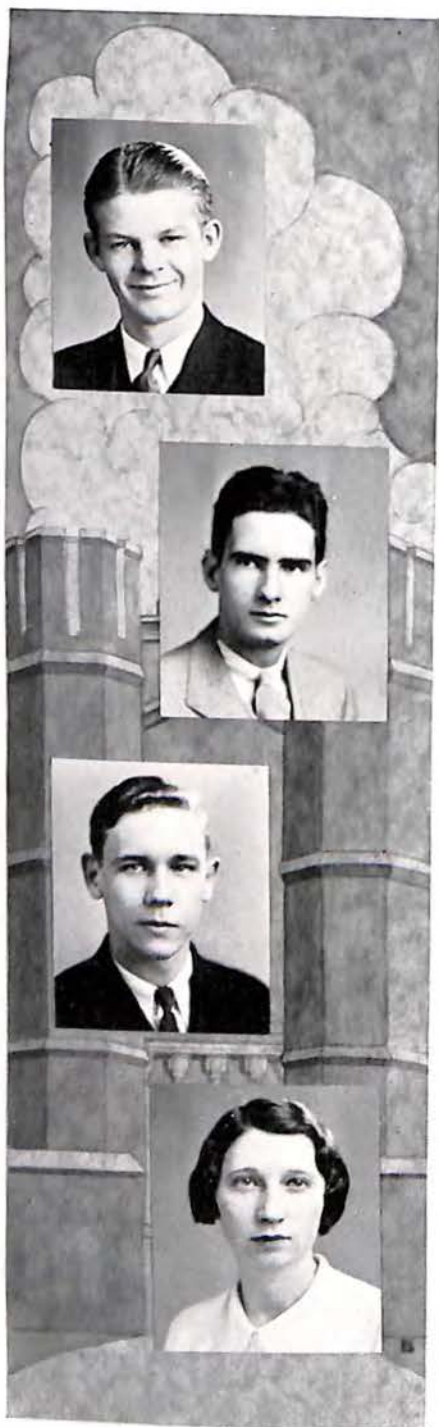
MARY HICKS

Sincere, amiable, dainty

Student Council, '30; Choral Club, '32

COMMERCIAL





MERLE WESLEY HIMES

"Pokey"

ACADEMIC

JOHN MINOR HINCH

Different, calm, assured

Student Council, '31, '32

ACADEMIC

UNIVERSITY OF VIRGINIA

JOSEPH WOODROW HOAL

"Woodie"

Attractive, philosophical, witty

Expression, '30, '31, '32; Vice President, Parliamentary Law, '32; President, Boys' Choral Club, '32; Boys' Glee Club, '32, '33; Student Council, '31, '32, '33; Hi-Y, '33; J. L. S., '32.

ACADEMIC

GEORGE WASHINGTON UNIVERSITY

ALICE JACK HOLLAND

"Al"

Capable, talented, popular

Girls' Club, '31, '32, '33; Membership Committee, '32, '33; M. W. L. S., '31, '32, '33; Public Speaking, '31, '32, '33; Parliamentary Law Club, '32, '33.

ACADEMIC

ROANOKE COLLEGE

The Acorn

JOHN HOWARD HOLLAND

ACADEMIC



PAULINE HAZEL HOLLAND

"Polly"

Attractive, companionable, sedate

Girls' Club, '33

ACADEMIC

NURSING



VIRGINIA GRACE HOOVER

ACADEMIC



HELEN LUCILE HORGAN

"Heg"

Good-natured, artistic, friendly

Girls' Club, '31, '32, '33; Publicity Committee, '32, '33; Expression, '30; M. W. L. S., '32, '33.

ACADEMIC





JEAN PAGE HOWARD

"Jerry"

Attractive, talented, sincere

Girls' Club, '31, '32, '33; M. W. L. S., '32, '33; Expression, '31, '32, '33; Cheer Leader, '32, '33; Senior Mirror, '33.

ACADEMIC

HOLLINS

MILDRED HOWARD

CHARLES WHITE HOWELL

Generous, companionable, good-natured

ACADEMIC

AERONAUTICS

KATHERINE HOWELL

"Blondie"

Sweet, witty, peppy

G. A. A., '30, '31, '32, '33

ACADEMIC

PRISCILLA HUBBARD
Dainty, attractive, demure

Choral Club, '30

COMMERCIAL

JOSEPH HUDGINS

"Joe"

Generous, attractive, genial

ACADEMIC

UNIVERSITY OF ALABAMA

LESTER HUDGINS

ACADEMIC

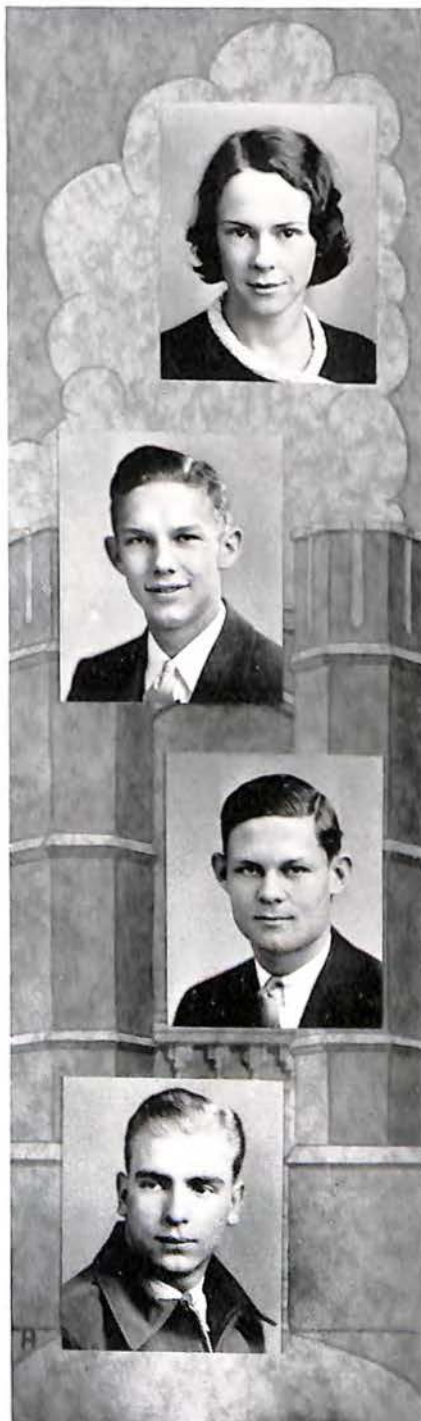
JAMES CLYDE HUMPHRIES, JR.

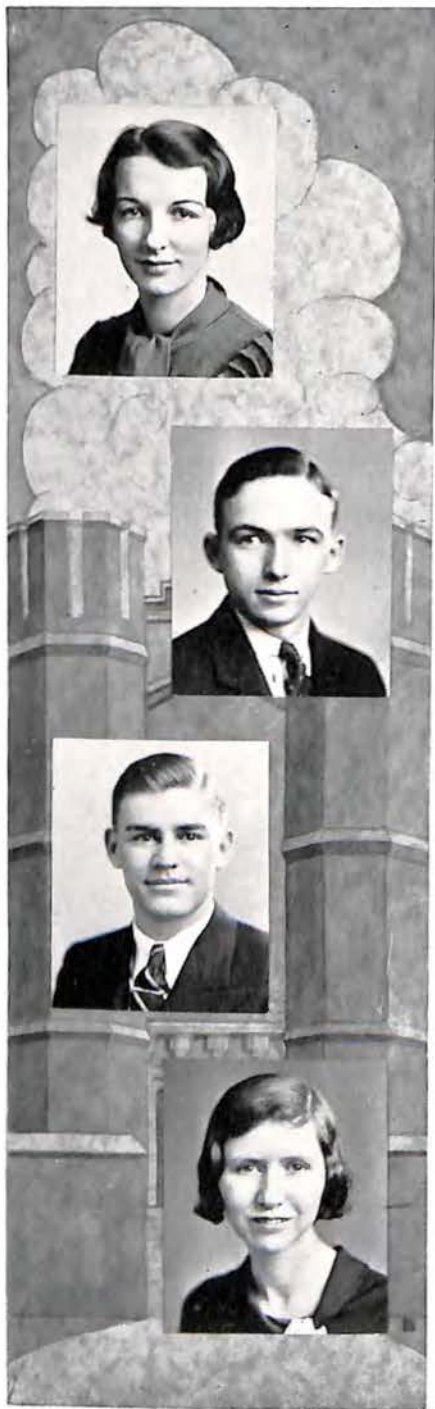
"Pat"

Attractive, genial, sociable

Hi-Y, '31, '32, '33; Football, '29, '30, '31, '32

ACADEMIC





GEORGINE KATHERINE HUNT

"Gene"

Attractive, gay, delightful personality

Commercial Club, '31; G. A. A., '30, '31;
Student Council, '30, '31

COMMERCIAL

CLARENCE SHELburn HUNTER

"Shelby"

Industrious, friendly, ambitious

Acorn Advertising Team, '31; J. L. S., '31;
Junior Class Representative, '32; Hi-Y, '32,
'33; Reception Committee; Hi-Y Conference.

ACADEMIC

V. M. I.

LEONARD IRVING HYLTON

Good-natured, generous, reserved

Hi-Y

ACADEMIC

AERONAUTICS

NINA RUBY HYLTON

"Nina"

Sweet, piquant, gentle

G. A. A., '32, '33; Baseball, '32; Volley Ball,
'32, '33; Expression, '31; Choral Club, '31

ACADEMIC

SARA CAROLINEA JAMISON

Serene, sweet, capable

Junior World-News, '31

ACADEMIC

CARSON-NEWMAN



MARY MILDRED JANNEY

"Charlie"

Striking, sweet, ambitious

COMMERCIAL

HARRISONBURG STATE
TEACHERS' COLLEGE



FLORENS IRENE JOHANSEN

"Tiimpyn"

Companionable, tactful, intelligent

Orchestra, '31, '32, '33; Secretary-Treasurer,
'31; Vice President, '32; M. W. L. S., '33;
Expression, '32, '33.

ACADEMIC

PEABODY INSTITUTE



LAWRENCE DIETRICH JOHNSON

"Lonnie"

Dignified, humorous, friendly

Boys' Glee Club, '30, '31, '32, '33; Boys'
Choral, '29, '30, '31, '32, '33; Vice President,
Boys' Choral, '29, '30.

ACADEMIC

V. P. I.





SIDNEY CORNELIUS JOHNSON

ACADEMIC

JOHN WESLEY JOHNSTON

Athletic, genial, attractive

President, Sophomore Class, '31, '32; Ex-Officio Member, Prefect Council, '31, '32; Track, '31, '32, '33; Best All-Round Track Man, '31, '32; Football, '32, '33; Hi-Y, '31, '32, '33; Student Council, '32, '33; Class Mirror, '33.

ACADEMIC

GEORGIA TECH

WILLIAM EDGAR JONES

"Ed"

Energetic, amicable, gifted

Hi-Y, '32, '33; ACORN Staff, '31, '32, '33; Advertising Manager, '32, '33; Assistant Business Manager, '31, '32; J. L. S., '31, '32, '33; Treasurer, '32; Student Council, '31, '32; Boys' Glee Club, '31, '32, '33; *Junior World-News*, '33; Senior Play; Senior Mirror.

ACADEMIC

EMORY AND HENRY

HELEN ODESSA JONES

Lovable, intellectual, good-natured

Choral Club, '32, '33

ACADEMIC

RADFORD

VIRGINIA ANTHOLINE JONES

"Jones"

Competent, original, congenial

G. A. A., '30, '31, '32, '33; G. A. A. Board, '32, '33; Volley Ball, '30, '31, '32; Basket Ball, '30; Apparatus, '31, '33; Baseball, '31, '33; Track, '31, '33; Track Manager, '33.

ACADEMIC NATIONAL BUSINESS COLLEGE



LOUIS HENRY KEEN, JR.

Friendly, trustworthy, good-natured

President, Senior Class, '32, '33; Big Brothers, '32, '33; Vice President, Big Brothers, '32, '33; Ex Officio, Prefect Council, '32, '33; Hi-Y, '31, '32, '33; Hi-Y Cabinet, '32, '33; Assistant Circulation Manager, ACORN, '31, '32; Senior Mirror, '32, '33; Senior Commencement Program.

ACADEMIC UNIVERSITY OF VIRGINIA



JOSEPH CLINE KEITH

"Joe"

Athletic, popular, efficient

Football, '31, '32, '33; Basket Ball, '30, '31, '32, '33; Captain, Basket Ball, '33; Hi-Y, '30, '31, '32, '33; Treasurer and Cabinet, Hi-Y, '32; Big Brothers, '30, '31, '32, '33; Secretary-Treasurer, Big Brothers, '32; Student Council, '30, '31; Vice President, Senior Class, '33; Senior Mirror, '33.

ACADEMIC UNIVERSITY OF RICHMOND



JONES KELLER

"Doc"

Genial, good-natured, witty

Orchestra, '30, '31, '32, '33; Secretary and Treasurer, '32; Vice President, '33

COMMERCIAL NATIONAL BUSINESS COLLEGE





MILDRED KELLNER

Sincere, sweet and attractive

ACADEMIC

FARMVILLE

MILDRED JANIE KENDRICK

"Millie"

Aspiring, sophisticated, talented

Expression, '29, '30, '31, '33; Choral Club, '29, '30, '31, '32, '33; Girls' Club, '32, '33; M. W. L. S., '32, '33; Glee Club, '32, '33; Secretary-Treasurer, '33; Senior Play Committee, '33; Public Speaking, '32; Make-Up, '32; Senior Play.

ACADEMIC

AMERICAN ACADEMY OF
DRAMATIC ARTS

RICHARD LYNN KENNETT

"Speed"

Enticing, vivacious, fun-loving

J. L. S., '30; Choral Club, '30, '31

ACADEMIC


DUKE

RUSSELL ARTHUR KING

Congenial, dependable, attractive

ACADEMIC

NATIONAL BUSINESS COLLEGE

The  Acorn

THOMAS A. KIRBY

"Tom"

Sporting, companionable, likable

ACADEMIC



SARAH FRANCES KIRKWOOD

Frank, dependable, versatile

Girls' Club, '32, '33; Glee Club, '32

ACADEMIC

HARRISONBURG



DAVID FRANCIS KLING

"Pete"

Sincere, capable, dependable

Hi-Y, '32, '33; Big Brothers, '33

ACADEMIC

ROANOKE COLLEGE



KATHERINE KNIGHTON

"Kitty"

Lovely, lovable, lazy

ACADEMIC

HARRISONBURG





ELLA ELIZABETH KNOWLES

Attractive, amicable, amiable

ACADEMIC

WINIFRED STERLING KREGLOE

"Kreg"

Sincere, tactful, dynamic

Boosters, '31, '32, '33; President, '32, '33; Girls' Club, '31, '32, '33; Vice President, '32, '33; Chairman Ceremonials, '31, '32; Prefect Council, '31, '32; M. W. L. S., '31, '32, '33; Wischefe Cabinet, '30, '31; *Roanoke Roman*, '31; Expression, '30, '31; Senior Presentation Committee; Senior Play.

ACADEMIC

HOLLINS

WALDO SHOWALTER LA FON

"Wally"

Likeable, capable, ambitious

ACADEMIC

GREENBRIER MILITARY SCHOOL

EDWARD WESLEY LAKES

"Ed"

Senior Play

Quiet, diligent, reliable

ACADEMIC

RADIO

BONNIE EMMA LANE

Radical, exuberant, brilliant

President, Quill and Scroll, '32, '33; Girls' Club Cabinet, '31, '32, '33; Chairman, Projects Committee, '31, '32; Reporter, '32, '33; ACORN Staff, '31, '32, '33; Wisehefu Cabinet, '30, '31; Chairman, Ceremonials Committee, '30, '31; Booster Club, '32, '33; M. W. L. S., '30, '31, '32, '33; Reporter, '32; *Junior World-News* Staff, '31, '32, '33; Assistant Editor-in-Chief, '32; Exchanges, '31; News Critic, '33; Senior Commencement Program Committee, '33; Expression Department, '33.

ACADEMIC

ROANOKE COLLEGE

JAMES BERTRAM LEONARD

"Jimmie"

Football, '31; Stage, '30, '31, '32, '33

ACADEMIC

ROANOKE COLLEGE

BYRON VINCENT LESCURE

Friendly, witty, popular

ACADEMIC

HELEN LOUISE LESTER

Kindly, pleasing, studious

ACADEMIC





LENORA ELIZABETH LEWIS

"Nora"

Attractive, sophisticated, lovable

Wisehefu, '31; Girls' Club, '32, '33

ACADEMIC

RANDOLPH-MACON

SARAH EUNICE LINKENHOKER

"Pug"

Peaceable, intelligent, talkative

COMMERCIAL

GEORGE EDWARD LOGWOOD

"Ed"

Musical, jolly, witty

Boys' Choral Club, '31, '32, '33; Boys' Glee Club, '31, '32, '33; Student Council, '32

ACADEMIC

WESLEYAN METHODIST COLLEGE

VIRGINIA LOVING

The Acorn

MYRTLE LOUISE LUCAS

"Eshie"

Gay, scholarly

Wisehefu Club, '30, '31; Membership Committee, '32, '33; Girls' Club, '31, '32, '33; M. W. L. S., '31, '32, '33; Public Speaking, '30, '31; Expression, '31, '32, '33.

COMMERCIAL

JENNIE LYNN

Charming, amiable, striking

Girls' Club, '32, '33

COMMERCIAL

THELMA WOOD LYNN

Sweet, quiet, industrious

Girls' Club, '32, '33

COMMERCIAL TRAINING—SCHAMOKEN, PA.

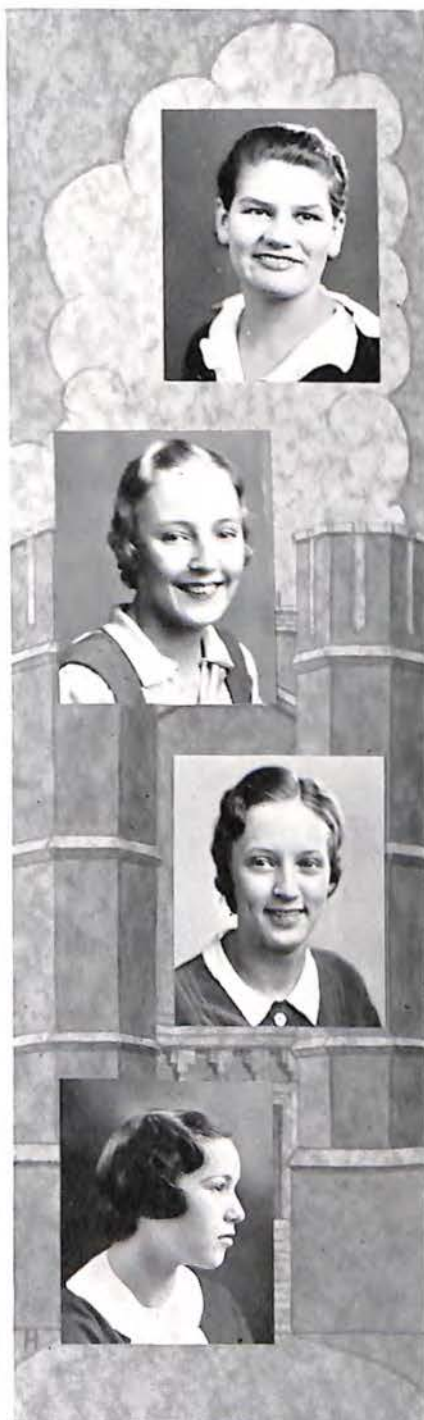
BELLE GERTRUDE LYONS

"Bell"

Pleasant, demure, amiable

Girls' Club, '31, '32

ACADEMIC TEMPLE UNIVERSITY





JAMES ALBERT MANNING

"Al"

Sociable, loyal, whimsical

ACADEMIC

V. M. I.

MARGUERITE ALICE MARTIN

"Cissie"

Genial, dexterous, optimistic

ACADEMIC

DUKE UNIVERSITY

RICHARD EDWARD MASON

"Ed"

Helpful, considerate, intelligent

COMMERCIAL

MARY EVELYN MASON

"Evvy"

Shrewd, attractive, neat

COMMERCIAL

NATIONAL BUSINESS COLLEGE

LORENE HUFF MASON

Jocose, kind, propitious

Expression, '31, '32; Make-Up, '31; Choral Club, '32

COMMERCIAL



OPAL DELMA MATTOX

"Ope"

Sympathetic, lovable, delightful

Girl Reserves, '30, '31; Treasurer, '30; Choral Club, '30; Librarian, '31; Reporter, '32; Librarian, '32; Librarian, '33; Glee Club, '33.

COMMERCIAL

RUBY VELMA MATTOX

Clever, attractive, darling

Girl Reserves, '30, '31; Choral Club, '30, '31; President, Choral Club, '32, '33; President, Glee Club, '32, '33; Class Mirror.

COMMERCIAL

DOROTHY ELIZABETH McBRIDE

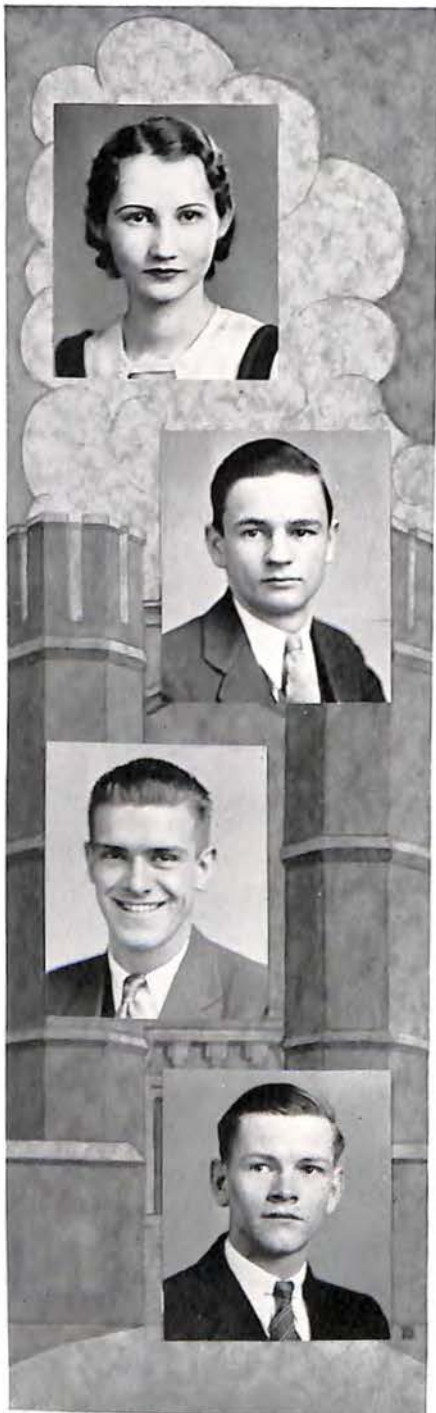
"Betty"

Winsome, affable, sociable

G. A. A., '30, '31; Manager, Baseball, '29; Class Basket Ball Team, '30

ACADEMIC

HARRISONBURG



MARY KATHRYN McCORMICK

"Kitty"

Genial, agreeable, dependable

COMMERCIAL

JOHN L. McCOWN

"Mac"

Quiet, reliable, trustworthy

ACADEMIC

GEORGIA TECH

ROBERT A. McNEAL

"Bob"

Loyal, pleasant, competent

ACADEMIC

V. P. I.

WILLIAM THOMAS McQUILKIN

"Billy"

Altruistic, capable, diligent

Vice President, Sophomore Class, '31; President, Junior Class, '32; Prefect Council, '31, '32, '33; Hi-Y, '31, '32, '33; Vice President, Hi-Y, '33; Big Brothers Club, '32, '33; J. L. S., '32; Assistant Business Manager, ACORN, '32.

ACADEMIC

LOUISE MAXINE MEADOWS

Vivacious, amiable, cute

COMMERCIAL NATIONAL BUSINESS COLLEGE



MARGARET JANE MEYBIN

"Peggy"

Affable, natural, attractive

Wisehefu, '30, '31; Girls' Club, '31, '33;
Art, '30, '31, '33; Choral Club, '30, '33;
Decoration Committee, Girls' Club, '31, '32.

ACADEMIC MARY BALDWIN



GORDON WILSON MILLS

Strong, courageous and unassuming

Best work in vocational arts

ACADEMIC U. S. COAST GUARD ACADEMY



ROBERT LEWIS MILLS

"Dizzy"

Unconquerable, energetic, overpowering

ACADEMIC V. M. I.





SAMUEL LESTER MILLS, JR.

ACADEMIC

VIRGINIA HOLMES MILLIKIN

"Gin"

Original, jactious, carefree

Choral Club, '31; Expression, '31; Girls' Club, '32; Assistant Commercial Editor, ACORN Staff, '32, '33.

COMMERCIAL

GLADYS CORRINE MILTON

Sweet, unaffected, companionable

M. W. L. S., '32, '33; Girls' Club, '32, '33; Social Committee, '32, '33

ACADEMIC

HARRISONBURG

MARTHA ELAINE MINTER

Naiive, efficient, genuine

Student Council, '31, '32, '33; Expression, '31, '32; Make-Up, '31, '32; Girls' Club, '33

COMMERCIAL

ALMA M. MITCHELL

"Lollie"

Coöperative, congenial

G. A. A., '31, '32, '33; G. A. A. Board, '31, '32, '33; Volley Ball; Basket Ball; Baseball; Track; Hiking Manager; Track Manager; Tennis Manager; Social Committee; Program Committee; Hiking Committee.

ACADEMIC

RECREATIONAL WORK



HAZELLE CLEO MOON

"Moonie"

Sporting, genial, capable

President, Freshman Class, Graham High, '29, '30; Member, Student Council, Graham High, '29, '30; Member, Girl Reserves, E. C. Glass High, '30, '31; Member, Girls' Club, Jefferson High, '31, '32.

ACADEMIC

BELLENNE



CUZETTE OLIVIA MOORE

"Skeezix"

Lovable, talented, understanding

Choral Club and Expression

COMMERCIAL

FREDERICKSBURG



LAKE VIRGINIA MOORE

Amiable, skillful, unfeigned

Expression, '31

ACADEMIC

BUSINESS COLLEGE





SHERWOOD HERNDON MOORE

"Morr"

ACADEMIC

ROANOKE COLLEGE

ELIZABETH STUART MOUNTCASTLE

"Lib"

Versatile, individual, coy

Girls' Club, '32, '33; Cabinet, '33; Wisehefu, '31; M. W. L. S., '31, '32, '33; Vice President, '32, '33; Public Speaking, Representative, '32; Booster, '32, '33; ACORNS Staff, '31; Chairman, Senior Class Play Committee; Expression; Senior Commencement Program.

ACADEMIC

HOLLINS

JACK BROADDUS MUNDY

Entertaining, mischievous, likable

Hi-Y, '31, '32, '33; Assistant Manager, Football, '30, '31, '32; Mirror

ACADEMIC

V. M. I.

ELSIE VIRGINIA MUNDY

"Shorty"

Congenial, witty, dainty

G. A. A., '31, '32

COMMERCIAL

STENOGRAPHER

The Acorn



ANITA VIRGINIA MYERS

Secret, competent, friendly

Student Council, '31; Girls' Club, '31, '32;
M. W. L. S., '31, '32, '33

ACADEMIC



DAVID WINTON NAFF

Efficient, genuine

Choral Club, '30, '31, '32, '33; J. L. S., '32;
Glee Club, '32, '33; Secretary, Glee Club, '32

ACADEMIC UNIVERSITY OF RICHMOND



ANNE NELSON

Singular, discriminating, appreciative

Editor-in-Chief, ACORN, '32, '33; Staff, '31,
'32, '33; Quill and Scroll, '32, '33; M. W.
L. S., '31, '32, '33; Vice President, '32; De-
bating Team, '32; Booster Club, '32, '33;
Girls' Club, '31, '32, '33; Program Chairman,
'32, '33; *Junior World-News*, '33; Senior Com-
mencement Program.

ACADEMIC RANDOLPH-MACON



JOSEPH EDWARD NEWMAN

ACADEMIC





GARLAND NININGER

ACADEMIC

LAMBERT BEATRICE NOEL

"Bee"

Pleasant, petite, sunny

COMMERCIAL

FREDERICKSBURG

JOSEPH HECKMAN NOEL

"Joe"

Tall, handsome, musical

Glee Club, '32, '33

ACADEMIC

ALABAMA

JOHN JOSEPH O'HEARN, JR.

ACADEMIC

The Acorn



DOROTHY SUE OULD

"Dottie"

Perceptive, ingenious, gracious

Girls' Club, '31, '32, '33; Program Committee, '31, '32; Associate Editor, ACORN, '32, '33; Booster Club, '32, '33; M. W. L. S., '30, '31, '32, '33; Treasurer's Committee, '32; Treasurer, '33; Wisehefu Club, '30, '31; Program Committee, '30, '31; Quill and Scroll, '33.

ACADEMIC

BRYN MAWR

EVELYN LOUISE OVERSTREET

"Easie"

Sweet, likeable, true

COMMERCIAL

PASCAL B. OWEN

"P. B."

Conscientious, dependable, capable

Student Council, '30; Hi-Y, '33; J. L. S., '33; Spelling Representative, '33; Senior Exercise Program Committee.

ACADEMIC

WASHINGTON AND LEE

AILEN CLARK PARKER

Sweet, attractive, friendly

Glee Club, '31, '32, '33; Publicity Committee, '31, '32; Project Committee, '31, '32; Social Committee, '33; Art, '30, '31, '32.

COMMERCIAL





MARY FRANCES PARSONS

Distinctive, impulsive, idealistic

President, Girls' Club, '32, '33; Girls' Club Cabinet, '31, '32; Chairman, Publicity; Prefect, '31, '32, '33; Secretary-Treasurer, Student Government, '32, '33; Reporter, '31, '32; Boosters, '31, '32, '33; Secretary, Junior Class, '31, '32; Class Mirror, '33; President, Wisehefu, '30, '31; M. W. L. S., '30, '31, '33; Senior Announcement Committee, '33; Parliamentary Law Club, '31, '32; Senior Commencement Program.

ACADEMIC

WILLIAM AND MARY

GEORGIE ELEANOR PATTERSON

ACADEMIC

JOHN HENRY PATTISON

ACADEMIC

GEORGE KRIETE PATTON

"Duke"

Witty, magnetic, personable

Hi-Y; Student Council, '31, '32; President, Public Speaking, '32; Assistant Advertising Manager, ACORN, '32, '33; Class Mirror.

ACADEMIC

UNIVERSITY OF VIRGINIA

JOHN WRENN PEARCE

Gifted, original, likeable

Associate Editor, ACORN, '32, '33; J. I. S., '29, '30, '33; Literary Team, Short Story Representative, '33; *Junior World-News*, '30; Public Speaking, '30; Class Mirror.

ACADEMIC GEORGE WASHINGTON UNIVERSITY

LARRY PENDLETON

ACADEMIC

MARTHA-ANNE RACHEL
PENDLETON

Candid, philosophical, distinctive

Associate Editor, ACORN, '32, '33; Boosters, '32, '33; M. W. L. S., '31, '32, '33; Vice President, M. W. L. S., '33; Quill and Scroll, '33; Student Council, '31, '32, '33; Girls' Club, '31, '32, '33; Program Committee, Girls' Club, '33; *Roanoke Roman Staff*, '31, '32; *Wisehefu*, '30.

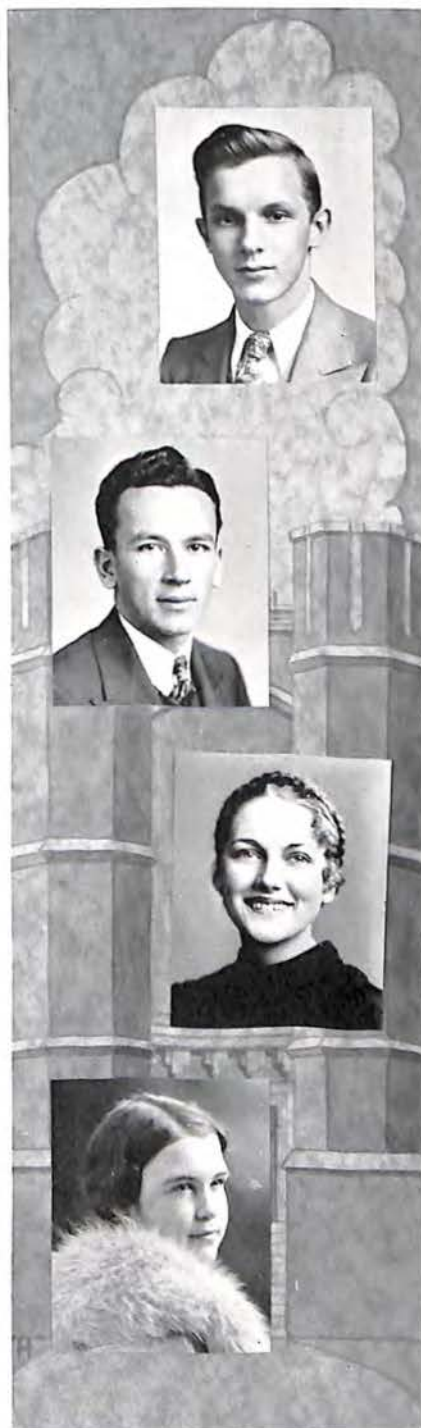
ACADEMIC RANDOLPH-MACON

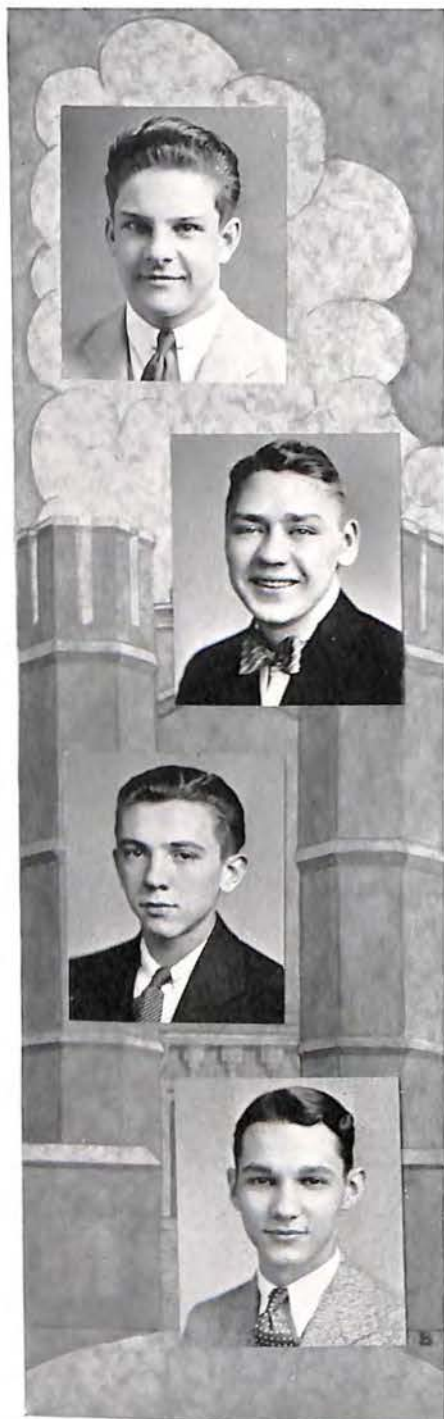
DOLLY MOORE PENN

Optimistic, studious, genial

Choral Club, '29; Girls' Club, '32

ACADEMIC HOLLINS





ALEXANDER CLIFFORD PEPPIN

"Boots"

Dignified, studious, congenial

J. L. S., '32; Track, '33

ACADEMIC

AVIATION

EMORY L. PERDUE

"Pie"

Athletic, amiable, congenial

Basket Ball, '32, '33; Hi-Y, '33

ACADEMIC

PHYSICAL EDUCATION

WILLIAM ABNER PETTY

"Billy"

Generous, sincere, congenial

Hi-Y, '32, '33

ACADEMIC

ROANOKE COLLEGE

RUSSELL PEYTON

"Pecton"

Studious, likeable, loyal

ACADEMIC

V. P. I.

HELEN IRENE PHELPS

Lovely, attractive, independent

Orchestra, '32; Girls' Club, '32, '33

ACADEMIC

HOLLINS



SHERWOOD SETTLE PIPPS

"Phipps"

Athletic, attractive, business-like

Football, '31, '32; Track, '31, '33; Relay Team, '31, '33; Hi-Y, '31, '32, '33; Hi-Y Cabinet, '33, and Treasurer, '33; Membership Committee; Announcement Committee.

ACADEMIC

V. P. I.



LOUISA WILTON PINCKARD

Amiable, quiet, reserved

Art, '32, '33

ACADEMIC



EMILY PALMYRA PINCKARD

Art

ACADEMIC

PRATT





MARY LEWIS PLYBON

Talented, dependable, pleasing

Wisehefu, '30, '31; Chairman, Music Committee, '30, '31; M. W. L. S., '31, '32, '33; Chairman, Social Committee, '32; Girls' Club, '31, '32, '33; Music Committee, '31, '32, '33; Choral Club, '30, '31, '32, '33; Glee Club, '31, '32, '33; Expression, '30, '31; Art Department, '33.

ACADEMIC

MUSIC

JOSEPHINE WHITE POINDEXTER

"Jo"

Natural, amiable, jolly

Wisehefu, '30, '31; Girls' Club, '31, '32; Decoration Committee, '31, '32; Project Committee, '31, '32; M. W. L. S., '31, '32, '33; Senior Program Committee, '33.

ACADEMIC

LIBRARY SCHOOL

LEWIS WILLIAM POLLARD

"Polly"

Amiable, companionable, helpful

ACADEMIC

ROANOKE COLLEGE

ARTHUR R. PORTERFIELD

"Pit"

Genial, ambitious, efficient

Hi-Y, '32, '33

ACADEMIC

WEST POINT

MINNIE HOWE PORTERFIELD

Cute, attractive, congenial

ACADEMIC

KENTUCKY WESLEYAN

NANCY CLAUDINE PORTERFIELD

Cute, vivacious, sweet

Girls' Club, '32, '33

COMMERCIAL

BUSINESS

CHARLES WILLIAM POWELL

ACADEMIC

MARY ELIZABETH POWELL

Lovable, true, reserved

M. W. L. S., '31, '32, '33; Expression, '31, '32

ACADEMIC

UNIVERSITY OF CINCINNATI





ANNA ELIZABETH PRICE

Vivacious, friendly, brilliant

M. W. L. S., '31, '32, '33; Girls' Club, '32, '33; Expression, '33

ACADEMIC RADFORD STATE TEACHERS' COLLEGE

MARGARET LEONA PRITCHETT

Demure, congenial, sincere

Girls' Club, '33; Choral Club, '33; Expression, '33

COMMERCIAL

ARNOLD DURWARD PUCKETT

Stodious, amiable, competent

COMMERCIAL

JAMES EDWARD QUISENBERRY

ACADEMIC

LILLIAN PEARL QU'ISENBERRY

Intelligent, dignified, lovable

Senior Exercise Program Committee, '33;
Class Mirror, '33

ACADEMIC WILLIAM AND MARY



DORRIS RAIKE

ACADEMIC



EARL RASMUSSEN, JR.

Capable, reliable, talented

Treasurer, Senior Class, '33; Big Brother, '32, '33; Hi-Y, '31, '32, '33; Secretary, Hi-Y, '32, '33; Assistant Manager, Track Team, '31; Manager, Track Team, '32.

ACADEMIC UNIVERSITY OF VIRGINIA



WILLIAM PHELPS REED

"Billy"

Agreeable, efficient, blond

ACADEMIC ROANOKE COLLEGE





WALTER SCOTT REID

"Dirt"

Attractive, athletic, sincere

Hi-Y, '30, '31, '32, '33; Hi-Y Cabinet, '31, '32; Hi-Y Membership Committee, '31, '32; Acorn Advertising Team, '31, '32; Football, '31, '32; Basket Ball, '30, '31, '32, '33; Class Mirror, '33; Senior Presentation Committee.

ACADEMIC

EMORY AND HENRY



GEORGE HENRY REMSBERG

"George"

Regular, carefree, likeable

ACADEMIC

ROANOKE COLLEGE



ELOISE BROWN RHODES

Cordial, winsome, unusual

Student Council, '30, '31, '32; Wisehefu Cabinet, '30, '31; Expression, '30, '31; Girls' Club, '32, '33; Glee Club, '32, '33; Choral Club, '32, '33; Booster, '32, '33.

ACADEMIC

N. C. C. W.



CHARLOTTE MARIE RICE

Attractive, jolly, magnetic

ACADEMIC

RANDOLPH-MACON COLLEGE

HARRY EDWARD RICE

"Q Ed"

Witty, charming, capable

COMMERCIAL

V. P. I.



MARY B. ROBERTS

Sincere, winsome, capable

Girls' Club, '33; Project, '33; Membership, '33; Publicity, '33; Art, '31; M. W. L. S., '31, '32, '33; Chairman, Advertising Committee, '33; Poster Committee, '32; Expression, '30, '31, '32, '33; Choral Club, '32, '33; Secretary-Treasurer, '33.

ACADEMIC

HOLLINS



MILDRED AGNES ROBERTS

"Sister"

Girls' Club, '32, '33; Project, '33; Membership, '33; Publicity, '33; Expression, '32; Public Speaking, '32, '33; Reporter; M. W. L. S., '32, '33; Chairman, Advertising Committee, '32; Choral Club, '32, '33; Parliamentary Law Club, '32, '33; Reporter; Art, '31.

ACADEMIC

HOLLINS



VIRGINIA HARRIS ROBERTS

True, thoughtful, talented

Wisehefu, '31; Expression, '31, '32; Art, '31, '32, '33

ACADEMIC

ART



The  Acorn



HENRIETTA ROGERS

Likable, mischievous, witty

Girls' Club, '33

COMMERCIAL

GEORGE PATTERSON ROWLAND

"Pat"

ACADEMIC

ROANOKE COLLEGE

EMILY BRANCH ROOP

"Piggie"

Unique, kind, serious

ACADEMIC

NURSING

JAMES BERNARD RUCKER

"Joe"

Tall, dependable, happy-go-lucky

ACADEMIC

V. M. I.

THOMAS DOWNMAN RUTHERFOORD

"Tom"

President, J. L. S., '33; J. L. S., '31, '32, '33; J. L. S. Cabinet, '32; Associate Editor, ACORN, '32, '33; Hi-Y, '31, '32, '33; Expression, '32, '33; Student Council Representative, '32, '33; President, Parliamentary Law Club, '33; Quill and Scroll; Debating Team, '33; Winner of Gold Medal in *Richmond Times-Dispatch* Debate, '32; Senior Commencement Program.

ACADEMIC

ROANOKE COLLEGE
UNIVERSITY OF VIRGINIA



MARY STEWART SCHWARZELL

"Pris"

Charming, clever, congenial

Expression, '30, '31, '32; Choral, '31, '32; Foods, '33; Make-Up Class, '32

ACADEMIC

BRYN MAWR COLLEGE



HENRIETTA ALMA SCOTT

"Scotty"

Delightful, athletic, unassuming

G. A. A., '31, '32, '33; G. A. A. Board, '31, '32; Basket Ball Manager, '31, '32; Captain, Basket Ball, '32, '33; Athletics, '31, '32, '33; Class Mirror, '33.

ACADEMIC

NATIONAL BUSINESS COLLEGE



GEORGE CLARK SCOTT, JR.

"Scottie"

Dependable, likeable, diligent

Hi-Y, '31, '32, '33; Public Speaking, '31, '32, '33; Student Council, '31, '32, '33; Big Brothers, '32, '33; Hi-Y Cabinet, '32, '33; Secretary-Treasurer, Big Brothers, '32, '33.

ACADEMIC

ROANOKE COLLEGE





VIRGINIA CATHERINE SCOTT
"Kitty"

Frivolous, whimsical, lovable
Girls' Club, '33

ACADEMIC

DREXEL

JAMES WALTER SEAGLE

ACADEMIC

ELIZABETH SECRIST

ACADEMIC

LOIS CATHERINE SENTER

Enthusiastic, dashing, sincere

Wisehefu, '30, '31; Program Committee; M. W. I. S., '30, '31, '32; Girls' Club, '31, '32, '33; Expression, '30, '31, '32; ACORN Advertising Committee, '32.

ACADEMIC

HOLLINS

WILL SHACKLEFORD

Generous, congenial, thoughtful

Hi-Y, '30, '31, '32, '33; Track, '32, '33; J. L. S., '31, '32; Senior Mirror Committee

ACADEMIC

UNIVERSITY OF VIRGINIA



LOUIS SHELTON

Generous, trustworthy, good-natured

ACADEMIC

ROANOKE COLLEGE



MILTON NED SHENKO

"Milton"

Amiable, capable, humorous

COMMERCIAL



ELIZABETH PRYSE SHIPPLETT

Charming, naive, poised

Student Council, '30, '31; Wisehefu, '30, '31; Chairman, Program Committee, '30, '31; M. W. L. S., '30, '31, '32, '33; Chairman, Decoration Committee, '31, '32; Girls' Club, '31, '32, '33; Chairman, Ticket Committee, '33; Expression, '30, '31, '32, '33; ACORN Advertising Committee, '32; Senior Presentation Committee, '33.

ACADEMIC

HOLLINS





JOHN ALBERT SHERERTZ

"Sir John"

Sportive, friendly, capable

COMMERCIAL

TAYLOR HOWARD SHIVELY

"Shive"

Friendly, intelligent, witty

ACADEMIC

ROANOKE COLLEGE

MARIAN SHOFFNER

Charming, clever, petite

Girls' Club, '32, '33

ACADEMIC

FARMVILLE

ELIZABETH ADALINE SHORTER

ACADEMIC

FRANKIE MAE SHUMATE

Understanding, amiable, genuine

Decoration Committee, M. W. L. S., '33;
Advertising Committee, M. W. L. S., '33;
Girls' Club, '32, '33; Membership Committee,
Girls' Club, '33.

ACADEMIC

ROANOKE COLLEGE

ABRAHAM SHURE

ACADEMIC

HELEN MARIE SIGMON

Helpful, different, clever

Girls' Club, '31, '32; *Roanoke Roman* Staff,
'32, '33; Business Manager, *Roanoke Roman*,
'32, '33; *Junior World-News*, '32, '33.

ACADEMIC

HARRISONBURG

ROBERT MILTON SIMPSON

Congenial, interesting, capable

Football, '31, '32; J. L. S., '30, '31; Sergeant-
at-Arms, J. L. S., '31; Boys' Debating Team,
'31; *Junior World-News* Sports Editor, '31,
'32; Associate Editor, '32.

ACADEMIC

V. P. I.





BENJAMIN SITES, JR.
ACADEMIC

ELSIE MARIE SLEDD
"Bubbles"
Smooth, vivacious, lovable
Choral Club, '32
COMMERCIAL

BURKS DUDLEY SLUSHER
Affable, witty, intelligent
ACADEMIC ROANOKE COLLEGE

ELSIE WATSON SMITH
Winsome, capable, pleasing
Expression, '31, '32; Choral Club, '31, '32
ACADEMIC FARMVILLE

JAMES BENJAMIN SMITH
ACADEMIC

LEILA HOLMES SMITH
Amusing, sweet, attractive

ACADEMIC

BRENEAU

OLETA VIOLET SMITH
Attractive, charming, sweet

ACADEMIC

BEAUTY CULTURE

ANNABEL LEE SNIDOW
COMMERCIAL





EDRIE SPEESE

ACADEMIC

LORRAINE MYRA SPIGEL

Fivacious, striking, amiable

Girls' Club, '31, '32, '33; M. W. L. S., '32, '33; Choral Club, '30; Make-Up, '32, '33

ACADEMIC

DRISCOL

VIRGINIA ESTER SPRADLIN

Attractive, lovable, gay

COMMERCIAL

WILLIE JEWELL SPRADLIN

"Billie"

Attractive, cheerful, sincere

ACADEMIC

VELMA LEE STANLEY

"Toots"

Clever, witty, congenial

COMMERCIAL NATIONAL BUSINESS COLLEGE

WILLIE ELIZABETH STAUB

Attractive, witty, genial

Choral Club, '33

COMMERCIAL

CHARLES GILLESPIE STEELE, JR.

Inquisitive, amiable, amusing

J. L. S., '31, '32, '33; Expression, '31, '32, '33;
Parliamentary Law, '32, '33; *Junior World-News*, '33.

ACADEMIC

HERMENIA STUBBS

"Menia"

Quiet, courteous, ambitious

COMMERCIAL





MARY LUCILLE STINSON

"Sis"

Attractive, capable, sincere

ACADEMIC NATIONAL BUSINESS COLLEGE

EDITH MARGARET STOKE

"Stokey"

Amiable, ambitious, capable

Wisehefu, '31, '32; Publicity Chairman; M. W. L. S., '32, '33; Advertising Committee, '32; Secretary, '33; Girls' Club, '32, '33; Publicity Committee; Girls' Glee Club, '31, '32, '33; Choral Club, '31, '33; Expression, '31, '33.

ACADEMIC ROANOKE COLLEGE—PALMER SCHOOL, CHIROPRACTIC

WARREN WILLIAMS STOKE

"Irish"

Witty, romantic, different

Glee Club, '30, '31, '32, '33; President, '31; Vice President, '30; Secretary, '32; Expression, '30, '31, '32, '33; Reporter, '32; President, '31.

ACADEMIC

DOUGLAS BEST STRATTON

Dignified, reserved, taciturn

ACADEMIC ROANOKE COLLEGE

SARA LOUISE STRICKLAND

"Ya Ya"

Genial, ambitious, vivacious

Wisechfu, '30, '31; Girls' Club, '31, '32, '33;
M. W. L. S., '31, '32

ACADEMIC

ROANOKE COLLEGE

RAYMOND P. THOMAS

"Shadow"

Clever, talented, reserved

Choral Club, '30, '31, '32, '33; Glee Club,
'31, '33; J. L. S., '31

MARGARET THOMASON

ACADEMIC

WILLIAM ESTILL TILSON, JR.

"Lone Wolf"

ACADEMIC

ROANOKE COLLEGE





ROSEMARY JOSEPHINE TINNELL

Capable, fascinating, lovable

ACADEMIC

JOSEPHINE KATHRYN TINSLEY

ACADEMIC

MARY VIRGINIA TINSLEY

"Mary Jane"

Congenial, witty, independent

ACADEMIC

FARMVILLE

JAMES MORTON TURNER

ACADEMIC

CARTER G. TUTWILER

"Tut"

Reserved, attractive, dependable

Hi-Y, '33

ACADEMIC

MARGARET H. URQUHART

Animated, conducive, facetious

Vice President, Wischegu Club, '30, '31; Chairman, Music Committee; Girls' Club, '31, '32; M. W. I. S., '31, '32, '33; Secretary, Girls' Club, '32, '33; Glee Club, '31, '32; Boosters, '32, '33; Senior Play.

ACADEMIC

STAMFORD HOSPITAL

ROSA MAGDALENE VANDERGRIFT

Efficient, lovable, gay

COMMERCIAL

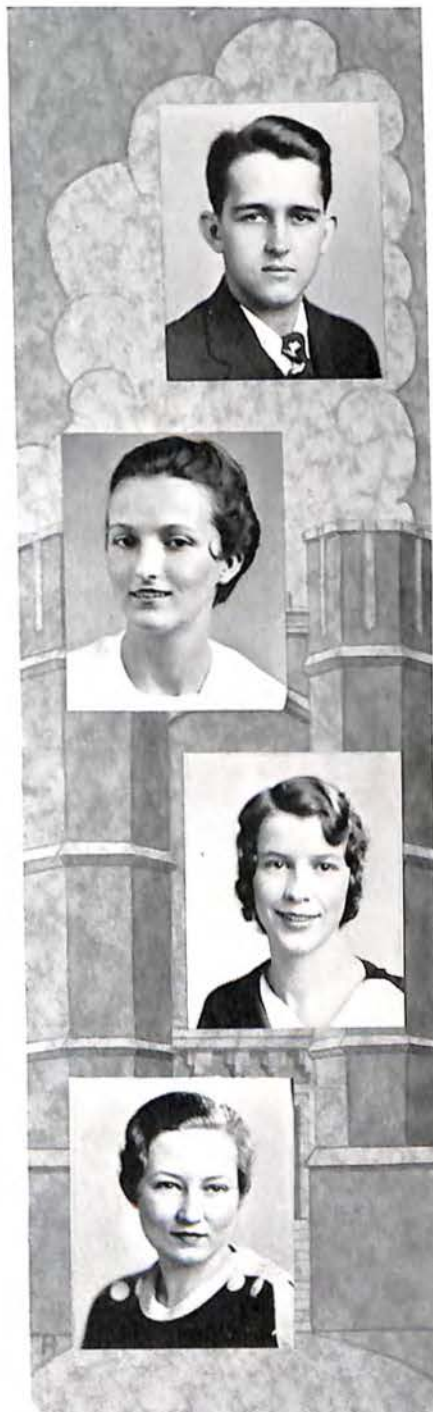
CHARLOTTE RAMSEY VERELLE

"Frenchy"

Different, generous, affable

Expression, '29, '30, '31, '32, '33; Choral Club, '31, '32; Girls' Club, '32, '33; M. W. I. S., '32, '33; Make-Up, '31, '32.

DREXEL





HAZEL DORA VEST
Attractive, dignified, true
Choral Club, '33
COMMERCIAL

KARL VIAR
ACADEMIC

MARVIN EDWARD VIA
"Bill"
Efficient, congenial, accommodating
ACADEMIC UNIVERSITY OF VIRGINIA

JESSIE THELMA WALKER
"Funny"
Sentimental, enthusiastic, gay
ACADEMIC AVERETT

ETHEL ELIZABETH WALSHIE

Pleasing, affable, witty

Wisehefu, '30, '31; Girls' Club, '31, '32;
Decorating Committee; Choral Club, '30, '31,
'32; Expression, '30, '31, '32.

ACADEMIC

WILLIAM AND MARY



THOMAS MOORCROFT WALSHIE

ACADEMIC



FRANK McCLURE WALTERS, JR.

"Mack"

Erudite, debonaire, attractive

Student Council, '31, '32; J. L. S., '31, '32,
'33; President of Addition, '32; Joke Editor,
Roanoke Roman, '32, '33; Senior Mirror, '33.

ACADEMIC

ROANOKE COLLEGE



CHARLES HAROLD WATSON

Likeable, considerate, dependable

COMMERCIAL





BEULAH CHRISTINE WAGGONER

"Boots"

Sincere, pleasing, companionable

COMMERCIAL NATIONAL BUSINESS COLLEGE

MISCAL BERNICE WAGNER

"Chris"

Demure, understanding, charming

Wisehefu, '31; Girls' Club, '32, '33

ACADEMIC CONCORD STATE TEACHERS' COLLEGE

SARA WAYNICK

Witty, vivacious, attractive

Class Mirror

ACADEMIC

FARMVILLE

ZULA FRANCES WEBBER

"Zoo"

Pleasing, generous, affable

Girls' Club, '32, '33; Wisehefu, '31, '32

COMMERCIAL

LAURA FRANCES WELLONS

Efficient, idealistic, understanding

Girls' Club, '31, '32, '33; Cabinet, '32, '33;
Publicity Chairman, Girls' Club; M. W. L.
S., '32, '33; Secretary, '32; Student Council,
'31, '32, '33; Boosters, '32, '33.

ACADEMIC RANDOLPH-MACON COLLEGE

LAURA MONTAGUE WHEELER

Beautiful, sincere, efficient

M. W. L. S., '32, '33; Girls' Club, '32, '33

ACADEMIC

ROY WHITE

"Hayseed"

A dreamer

ACADEMIC UNIVERSITY OF FLORIDA

ROBERT EDWIN WHITEHEAD

ACADEMIC





WILLIAM RUSH WHITMAN

"Griz" "Bill"

Woman-hater, happy-go-lucky, droll

ACADEMIC

HAMPDEN-SYDNEY



LOUISE CORINNE WIERINGO

Sweet, loyal, talented

ACADEMIC

HOLLINS



CHARLES WILLIAM WIEST

"Bobbie"

Sincere, companionable, sensitive

ACADEMIC

UNIVERSITY OF VIRGINIA



JEAN TALMADGE WILDMAN

Amiable, sincere, delightful

Wisehefu Club, '30, '31; Girls' Club, '31, '32, '33; Publicity Committee; M. W. L. S., '32, '33.

ACADEMIC

AVERETT

AVIS ONEAL WILLIAMS

"A"

Attractive, amiable, athletic

G. A. A., '30, '31, '32; Recorder of Points, '31, '32; Volley Ball Team, '31, '32; Captain, Basket Ball Team, '32; Tennis Team, '31, '32; Girls' Club, '31, '32, '33; Senior Mirror Committee.

COMMERCIAL

FREDERICKSBURG

JAMES WILLIAMS

ACADEMIC

ROBERT J. WILSON

Amicable, persistent, ambitious

J. L. S., '30, '31, '32, '33; Secretary, '32; Sergeant-at-Arms, '33; Public Speaking, '31, '32, '33; Choral Club, '32; Parliamentary Law, '31, '32, '33.

ACADEMIC

ROANOKE COLLEGE

REGINALD G. G. WITT

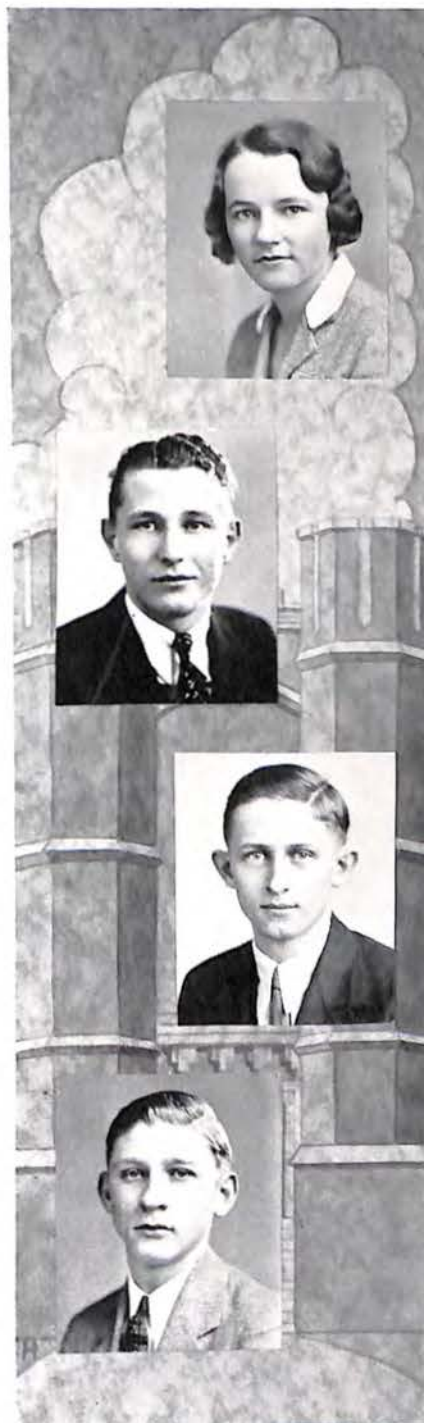
"Reggie"

Original, witty, clever

J. L. S., '31, '32, '33

ACADEMIC

V. P. I.





DOUGLAS JESSE WOMACK

ACADEMIC

CLAIBORNE WOOD

Sweet, likeable, attractive

Wisehefu, '30; Girls' Club, '31, '32; Expression, '31

ACADEMIC

WILLIAM AND MARY

PHYLLIS MARAUENE WOOD

"Phyl"

Attractive, efficient, delightful

MARY ALICE WOOD

Poised, delightful, amiable

Girls' Club, '32, '33; Student Council, '32, '33

ACADEMIC

FARMVILLE

The Acorn



BERNARD W. WOODAHL

Capable, misogynistic, business-like

Business Manager, ACORN, '32, '33; Editor-in-Chief, *Junior World-News*, '32, '33; Organization Manager, '31, '32; J. L. S., '31, '32, '33; Vice President, '32; Hi-Y, '32, '33; Cabinet, '32, '33; Big Brother, '32, '33; Quill and Scroll, '32, '33; Secretary, '32, '33.

ACADEMIC

JOURNALISM

MARTHA ANNE WOODRUM

Intriguing, sincere, beautiful

Girls' Club, '32, '33; Program Committee; Chairman, Senior Announcements Committee; Senior Class Mirror.

ACADEMIC

SWEET BRIAR

CHARLES GRAVELY YOUNG

ACADEMIC

OSCAR EDWARD YOUNG

ACADEMIC





ROGER DOUGLAS YOUNG

Modest, capable, unassuming

ACADEMIC

KATHLEEN ZOLLMAN

"Kitty"

Amiable, industrious, ambitious

ACADEMIC

NIGHT SCHOOL

LACY DEVINE CRONK

ACADEMIC

GEORGE BERNARD DILLARD

ACADEMIC

The  Acorn

EVELYN MARIE DORAN

Quiet, capable, sweet

G. A. A., '33

ACADEMIC

HARRISONBURG



WILLIAM RAYMOND EANES

"Jack"

Capable, friendly, sincere

COMMERCIAL

MUSIC



HELEN ARLA EGOLFF

"Babe"

Vivacious, peppy, amiable

ACADEMIC

HARRISONBURG



JOHN FLORA, JR.

"Jack"

Accommodating, optimistic, attractive

Class Mirror

ACADEMIC

ROANOKE COLLEGE





FRANCIS MILBURN FREEMAN

"Freak"

ACADEMIC

EUNICE GARLAND

ACADEMIC

MARIETTA GOOD

Attractive, capable, lovable

Choral Club, '33

COMMERCIAL

RUTH IRENE GOOD

Cute, attractive, vivacious

COMMERCIAL

The  Acorn

BEVERLEY HEATWOLE

"Beb"

Peppy, delightful personality, talented

ACADEMIC

HARRISONBURG

CAROLINE L. JORDON

Agreeable, attractive, candid

Wisehefu, '30, '31; Girls' Club, '31, '32, '33;
M. W. L. S., '31, '32, '33

ACADEMIC

HARRISONBURG

HERBERT KAPLAN

ACADEMIC

VICTOR MARKS

ACADEMIC





ESTELLE EVELYNE SCOTT

"Scottie"

Sedate, beautiful, attractive

COMMERCIAL

LOUISE MABLE ST. CLAIR

Attractive, congenial, good-natured

Girls' Club, '31, '32

COMMERCIAL

ALMA ELIZABETH WALKER

"Tillie"

Delightful, capable, cheerful

COMMERCIAL

ANDREW WOOD

ACADEMIC

CHARLES LANDON CARTER
ACADEMIC



ROBERT TAPSCOTT CARTER
COMMERCIAL



STANLEY GRIGG CROCKETT
ACADEMIC



LULA MAE CRUSH
COMMERCIAL



MEET THE LEADERS



EDITOR of ACORN



PRES. STUDENT BODY



PRES. BIO BUDDIES



PRES. G.C.



CAPT. BASKETBALL



PRES. SENIOR CLASS



PRES. J.L.S.



BUSINESS MANGR. ACORN



PRES. BOOSTERS



PRES. M.W.L.S



PRES. QUILL and SCROLL

The  Acorn

SENIOR
CLASS

MIRROR
OF 1933



CLASS BEAUTY
WOODRUM



MOST POPULAR
CARPENTER, KEITH



BEST
GOUGH



ALL ROUND
JOHNSTON

The Acorn



MOST SCHOLARLY
QUISENBERRY WALTERS



MOST CAPABLE
DURHAM



BIGGEST CASES
JONES & GRAFF



MOST CAPABLE
KEEN



MOST TALENTED
CARR PEARCE



The Acorn




MOST ATTRACTIVE
BUTLER HOWARD



TYPICAL SENIOR
ALLEN



BIGGEST CASES
FLORA  FURROW



TYPICAL SENIOR



NO BRAINS BUT
WAYNICK MUNDY



The  Acorn



WITTIEST
CODY PATTON



MOST ATHLETIC
SCOTT REID



CUTEST
MATTOX BALTHIS



The Junior Class

OFFICERS

<i>President</i>	BOBBY SOWDER
<i>Vice President</i>	ELIZABETH SEIBER
<i>Secretary</i>	BILLY TICE
<i>Treasurer</i>	RALPH LONG

The  Acorn



AKERS
BALLARD
BOWLES
BURGESS
CARLTON
CHITWOOD

ALDRICH
BARNES
BOWLING
BURNETT
CARR, K.
CHRISTIAN

ALLEN, M. E.
BEATTY
BRICKLAND
CALDWELL
CARR, G.
CLOYDE

ALLEN, M.
BOOTH
BRIGHTWELL
CAMDEN, E.
CARTER
CLAY

APPLE
BOSANG
BROWN
CAMDEN, L.
CHAPMAN, B.
COFFMAN

ARMISTEAD
BOSWELL
BRYAN
CAMPBELL
CHAPMAN, P.
CRAIG

The Acorn



CROUCH
DICK
DUKE, E.
ELLIOT, F.
FITZGERALD
GRAY

CODDINGTON
DICKERSON
DUKE, J.
ELMORE
FRITH
GREENWOOD

CARRICO
DIVERS, H.
DUNLAP
ENGLISH
FULTON, E. L.
GRIGGS

DAMEWOOD
DIVERS, F.
DYGART
FAVILLE
FULTON, V.
GROGAN

DAVIS, F.
DOWDY
ELLIOT, A.
FEATHER
GARST
HAIRFIELD

DAVIS, P.
DOWNS
ELLET, E.
FERGUSON
GRAVE
HALL

The  Acorn



HANK
HOBACK
HUSTED
JENKINS, F.
KEEN
LINDSAY

HARLOW
HOBSON, M.
HUMPHREY
JOHNSON, F. L.
KENNARD
LONG

HAYNES
HOBSON, P.
HUTCHINSON
JOHNSON, L.
KESSLER
LUCK

HELLER
HOCHINS
HARRIS
JOHNSON, W.
KIDD
LUNSFORD

HILL
HOCHINS, M.
JENNINGS, E.
JOHNSON, B.
KIRBY
LYNN

HINSON
HOGE
JENKINS, D.
KEARNS
LASSITER
MARSHAL, H.

The  Acorn



MARSHAL, N.
McINDOE
MILLS
NICHOLS
PARKER, H.
PERKINS

MARTIN, E.
McGEEHEE
MORRISON
OAKY
PARKER, R.
PITTMAN

MARTIN, H.
McMURRAY
MULLINS, C.
OTEY
PEARSALL
PITZER

MASON, D.
MEADOW
MULLINS, R.
OVERSTREET
PEDIGO
POE

MASON, R.
MEARS
NAPIER
PACE
PENN
POINDEXTER

McDONALD
MENIFEE
NEVINS
PALMER
PERDUE
PRICE

The Acorn



PUGH
REMSBERG
ROBESON
SHAW
SMITH
STEVENS, L.

RAINEY
ROSENBERG
SAUN
SHEPPE
SWEET
STEVENS, M.

RASMUSSEN
REYNOLDS
SAUNDERS
SIEBER
SOWDER
SPICKARD

REA
RIGGLE
SCOTT
SIGMON
STAFFORD
STOKE

REID, G.
ROBERSON
SHARP
SLUSHER
STONE, C.
SPESSARD

REID, I.
ROBERTS
SHAPIRO
SMILEY
STONE, M.
TATE

The Acorn




TAYLOR, A.	TAYLOR, V.	THOMAS, L.	THOMAS, M.	THURMAN	TICE
TILLER	TRONELL	VASS	VAUGHAN, A.	VAUGHN, H.	VIA, H.
VIA, J.	VIA, R.	VIAR, A.	WELCH	WHITEHEAD	WHITMAN
WILLIS, H.	WILLIS, B.	WILLIAMS	WILSON, J.	WILSON, M.	WILSON, S.
WOOD	WOOLWINE	WRIGHT	YOUNG	WRIGHT, J.	ZELLER
BAUMGARDNER	HAMMERSLEY, D.	HAMMERSLEY, H.	McMAHON	ROBERSON	SYDENSTRICKER



THE JEFFERSON SOPHOMORE CLASS

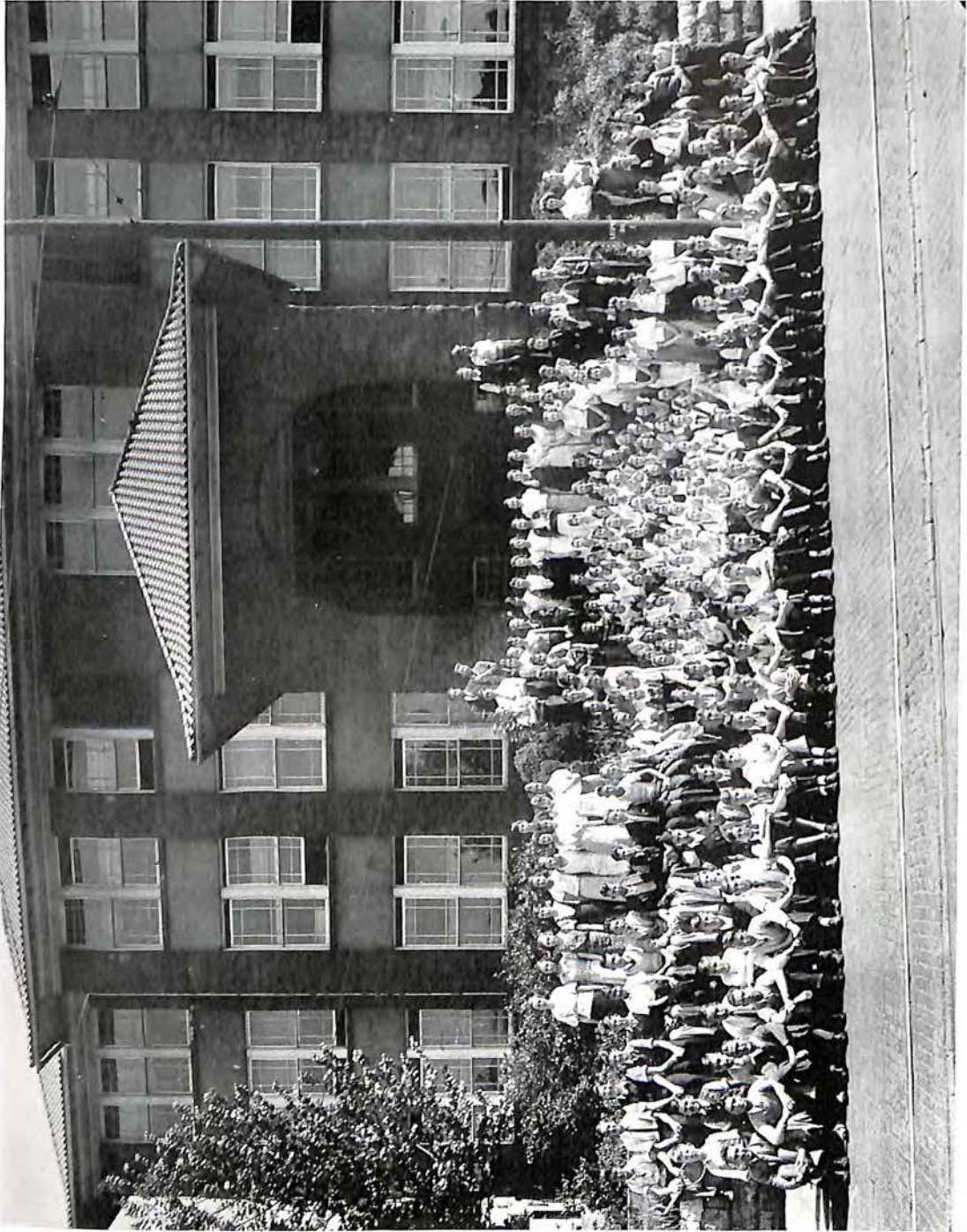


The Jefferson Sophomore Class

The Sophomore Class of Jefferson High has had a very successful year. Generally, this class is the first when the students are organized into distinct classes and are trained in self-government. Because of this early organization, the students are well trained in class unity by the time they become Seniors, and are required to act as a unit.

In 1932 and 1933 this class has been ably represented in the Prefect Council, the ACORN Staff, the Student Council and in many other activities. In this way, they are trained to make unusually excellent Senior Classes.

<i>President</i>	MOSBEY WILLIAMS
<i>Vice President</i>	FRED WHITLOCK
<i>Secretary</i>	BETTY URQUHART
<i>Treasurer</i>	GENE KESSLER
<i>Advisor</i>	D. W. PERSINGER



THE LEE JUNIOR SOPHOMORE CLASS



The Sophomore Class of Lee Junior

Because of conditions at Jefferson, there is a large group of Sophomores at Lee Junior who were unable to avail themselves of the organizations of high school.

Therefore, Miss Cassye Young, feeling definitely the handicap being placed on them, organized this group into a class with the same privileges of the class at Jefferson.

This year's class is an excellent one, and high school is looking forward to their enrollment, and expecting a strong class of Seniors in 1936.

- President* FRANK McQUILKIN
Vice President THERESA GRAFF
Secretary DOROTHY PORTER
Treasurer ANDY COXE

The Junior World-News

STUDENTS ATTEND S.I.P.A. MEETING

Informative Speeches There Given By Leading Literary Men.

ROANOKE PLACES IN LITERARY MEET

Winning Contestants Eligible For Charlottesville Competition.

HI-Y ELECTS NEW MEMBERS

Cabinet Has Discussion With Girls Club Gabs. net.

BOYS' GLEE CLUB VISITS RADFORD HI

Thirty Boys Make Trip and Present Program Before Student Body.

Bonnie Lane Heads Quill and Scroll

SPESSARD HEADS HI-Y FOR '34

Long, Shapiro, Lindsey and Chapman Complete List of Officers.

Boys' Glee Club Presents Broadcast

Jefferson Track Team Beats V. M. I.

SPRING ACORN MAKES DEBUT

Student Drawn Cartoons Feature Final Issue.

New Curtains For Auditorium



Auditorium Floor Is Re-lettered By "Big Buddies"

KEEN PRESIDENT OF SENIOR CLASS

President Favorite of Four Candidates—Other Elections in Roll Call Later.

STAFF FOR PAPER IS REORGANIZED

Woodah Announces Staff For Spring—Price and Armistead Assistant Editors.

Eight Honored By Quill and Scroll

JEFFERSON HIGH GOES DEMOCRATIC

Roosevelt Secures 593 Votes; Hoover 356; Thomas 123. Heavy Vote Cast.

ACTIVITY HEADS ADDRESS PARENTS

School Leaders Explain Purpose of Clubs and Organizations.

STONE ELECTED PRESIDENT OF STUDENT BODY

Outcome of Election Announced In Cafeteria Today At Lunch Time.

SIEBER HEADS '34 GIRLS' CLUB

Ureghart, Perkins and Barnes Complete List of Officers For Next Year.

World-News Host To School Writers

STUDENT GROUPS PLAN TWO NIGHT ENTERTAINMENT

All Seats to Be Reserved For Show to Be Presented April 28 and 29.

Mr. Parsons Traces History of Student Government At Hi



ACTIVITIES



STUDENT GOVERNMENT



Student Participation in Government

Student Government was started at Jefferson in 1928 through the exertions of both the faculty and student body. Its purpose has been to give each student a voice in the government of the school, and to instill a spirit of honesty and coöperation in him. To attain these aims, a Prefect and a Student Council were inaugurated. In the former are vested the legislative, executive and judicial powers of the organization. Its members, fifteen in all, are elected from the respective classes, the president of each class being an "ex-officio" member. The advisory powers of the organization are contained in the Student Council, a group composed of one member from every roll call. This council is the medium between the Prefect Council and the students themselves. There are four faculty advisors to these councils. However, none of the above groups would be of any importance, if it weren't for the coöperation of the student body. As their coöperation has been consistent and enthusiastic during the past year, Student Government has attained its highest aims, and we look forward to its accomplishment of more and better things in years to come.

MEMBERS OF THE PREFECT COUNCIL

SENIORS

ROGER ALLEN, *President*
 MARY FRANCES PARSONS, *Secretary*
 LEWIS KEEN, *Ex Officio*

BOB BUTLER
 BILLY McQUILKIN
 LOUIS HANCOCK

JUNIORS

CONNIE STONE, *Junior Prefect*
 BOBBY SOWDER, *Ex Officio*

FRANCES JENKINS
 ELIZABETH SIEBER

GEORGE ARMISTEAD, *Reporter*

SOPHOMORES

MOSBEY WILLIAMS, *Ex Officio*
 IRENE WEAVER

CATHERINE LEMON
 MARY JANE HOUCHINS

FACULTY ADVISORS

MISS EDITH MOORE
 MISS NELLIE SMITHEY

MISS MARY DUNCAN
 MR. DAVID PERSINGER



THE GIRLS' CLUB



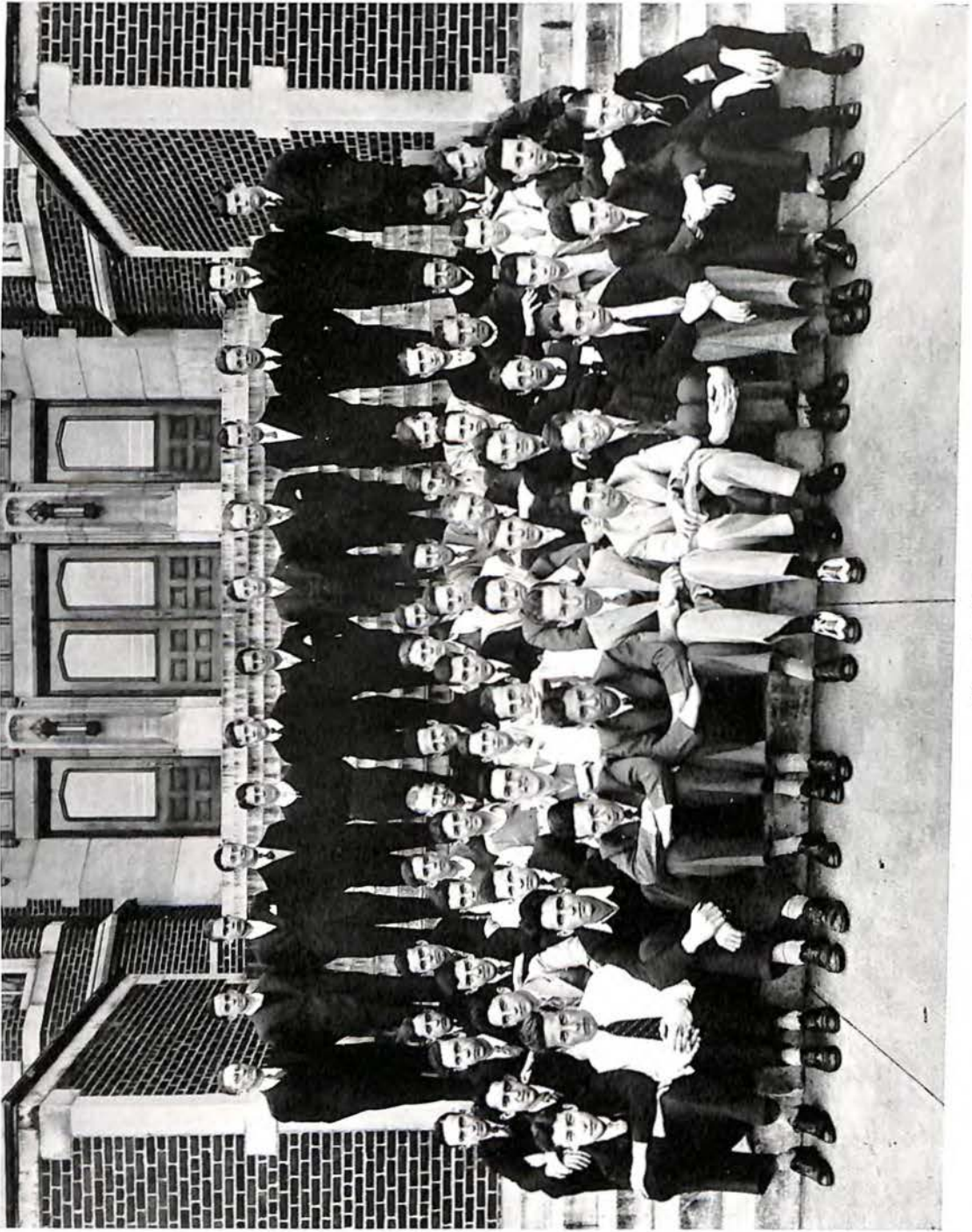
The Girls' Club

The morning sun shot its gleaming rays upon the trail which winds along through the hills. The tribe of Indians, traveling upon the trail, left behind them a record of their unusual achievements to inspire the younger tribes following them. The Indians first added new members to their tribe and set out upon the journey in earnest. During the seasons of Thanksgiving and Christmas, the tribe gave thanks to the Great White Spirit with baskets to those Indians less fortunate. During the early part of winter a great conference was held in Roanoke and all the youths and maidens of the state attended. At the Week of Prayer before Easter, outside sages spoke, and gave us new ideas of Manitoba. Our chieftain, Mary Frances Parsons, led the band along the paths and counseled often at the powwows and feasts, to which the mothers, fathers and sweethearts of the tribe members were invited.

But now the sun is lowering into the west and the trail nears its end. As we join hands and gather around the fire at Camp Tree Top for the last time, our hearts are filled with the knowledge that the trail has ended in reality, but goes on forever in our memories.

OFFICERS

<i>President</i>	M. F. PARSONS
<i>Vice President</i>	STERLING KREGLOE
<i>Secretary</i>	MARGARET URQUHART
<i>Treasurer</i>	JOSEPHINE GALE
<i>Program</i>	NELSON
<i>Membership</i>	KREGLOE
<i>Social</i>	HOUCHINS
<i>Decoration</i>	DUNLAP
<i>Publicity</i>	WELLONS
<i>Projects</i>	COON
<i>Sports</i>	GRAFF
<i>Music</i>	SIEBER
<i>Ceremonial</i>	CAMDEN



THE HI-Y CLUB



The Hi-Y Club

The Hi-Y Club of '33 has experienced a most successful year. Never before in the history of high school has an organization undertaken and carried out such a program as did the Hi-Y Club this year. On February 10th, 11th and 12th the Jefferson Hi-Y entertained a convention composed of 800 boys and girls from all over Virginia. During this conference, the visitors enjoyed lectures, discussion groups, a play, an international tea and a memorable banquet in the high school gym on the night of February 11th. Bobby Butler, the President, deserves much credit for his untiring aid in putting this across and making it a success.

Throughout the year the Hi-Y Club has heard and enjoyed prominent local speakers and lecturers at its supper meetings, held every Thursday night at the Y. M. C. A. The activities, marking the social calendar, were banquets held for the boys' mothers and fathers and the faculty. At Christmas, the club gave a supper to some underprivileged boys from Norwich, at which time they gave them Christmas presents and clothes. In the spring of the year, the boys held a round table at Camp Johnson, and, at the close of the school, spent a week-end there. Another event at camp was "ladies' night," at which time every member took a girl up for supper.

The Hi-Y is a select club and the new members are taken in by a two-thirds vote of the old members.

OFFICERS

<i>President</i>	BOBBY BUTLER
<i>Vice President</i>	BILLY McQUILKIN
<i>Secretary</i>	EARL RASMUSSEN
<i>Corresponding Secretary</i>	NEVILLE AMMEN
<i>Treasurer</i>	SHERWOOD PHIPPS

LOUIS HANCOCK	LEWIS KEEN
BERNARD WOODAHL	ROGER ALLEN
GEORGE SCOTT	NED GOUGH

WILLIAM BOWLING



THE BOOSTER CLUB



The Booster Club

Organized a few years ago, this Club is composed of a group of girl leaders who are admitted to membership by a five-sixths vote of the members and a sufficiently high scholastic standing. The maximum membership, twenty girls, has been reached this year.

The 1932-33 chapter of the Boosters has had a very active year. They solicited ads for the ACORN, besides planning and sponsoring numerous "pep" assemblies, parades and souvenir programs for the football and basket ball games.

With the other organizations, the Booster Club aided in putting on the "Jefferson Jig Saw."

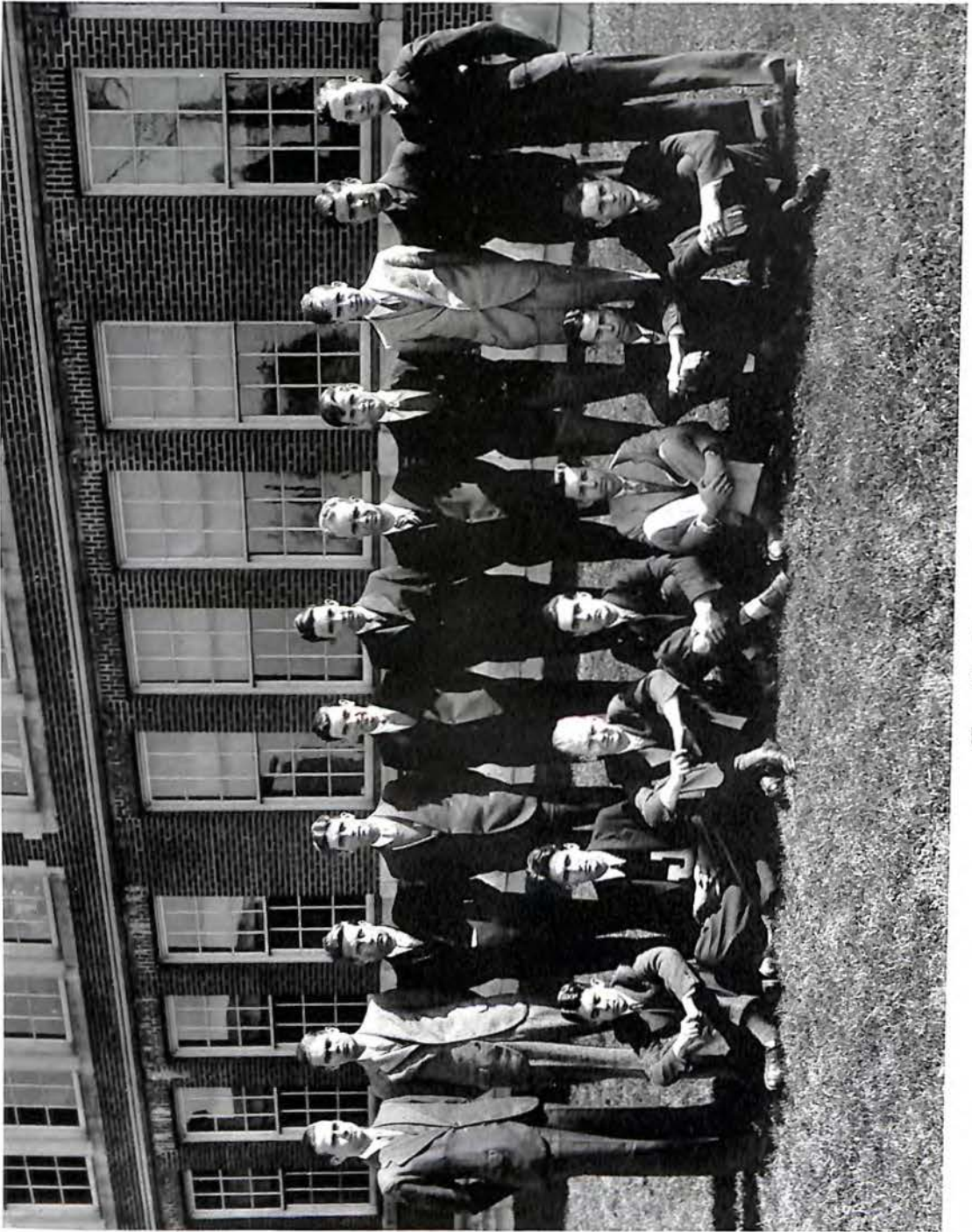
Under the able leadership of Sterling Kregloe, the Boosters of this year have had a pleasant and prosperous year.

President.....STERLING KREGLOE
Secretary-Treasurer.....JOSEPHINE GALE

MEMBERS

RACHEL PENDLETON
 DOROTHY OULD
 MILDRED PERKINS
 LOIS CAMDEN
 ELIZABETH SIEBER
 SUE LUNSFORD
 ELEANOR GRAFF
 FRANCES WELLONS
 FRANCES JENKINS

ALICE BARNES
 MARY FRANCES PARSONS
 ELIZABETH MOUNTCASTLE
 VIRGINIA GOUGH
 MARGARET URQUHART
 ELOISE RHODES
 ANNE NELSON
 BONNIE LANE
 MARION DURHAM



THE BIG BUDDY CLUB



The Big Buddies

The purposes of this organization are twofold. First: The organization attempts to strengthen the ties of friendship among the boy leaders of Hi by intimate association. Second: The Big Buddies enthusiastically support all student activities in Jefferson High. The Big Buddies, organized since 1925, have since their formation been regarded as the honor organization for boys in Jefferson.

This year the Big Buddies backed the "Jefferson Jig Saw." The annual J-Festival was another of their projects. They also repainted the letters on the auditorium floor. This year has been a decided success for the Big Buddies.

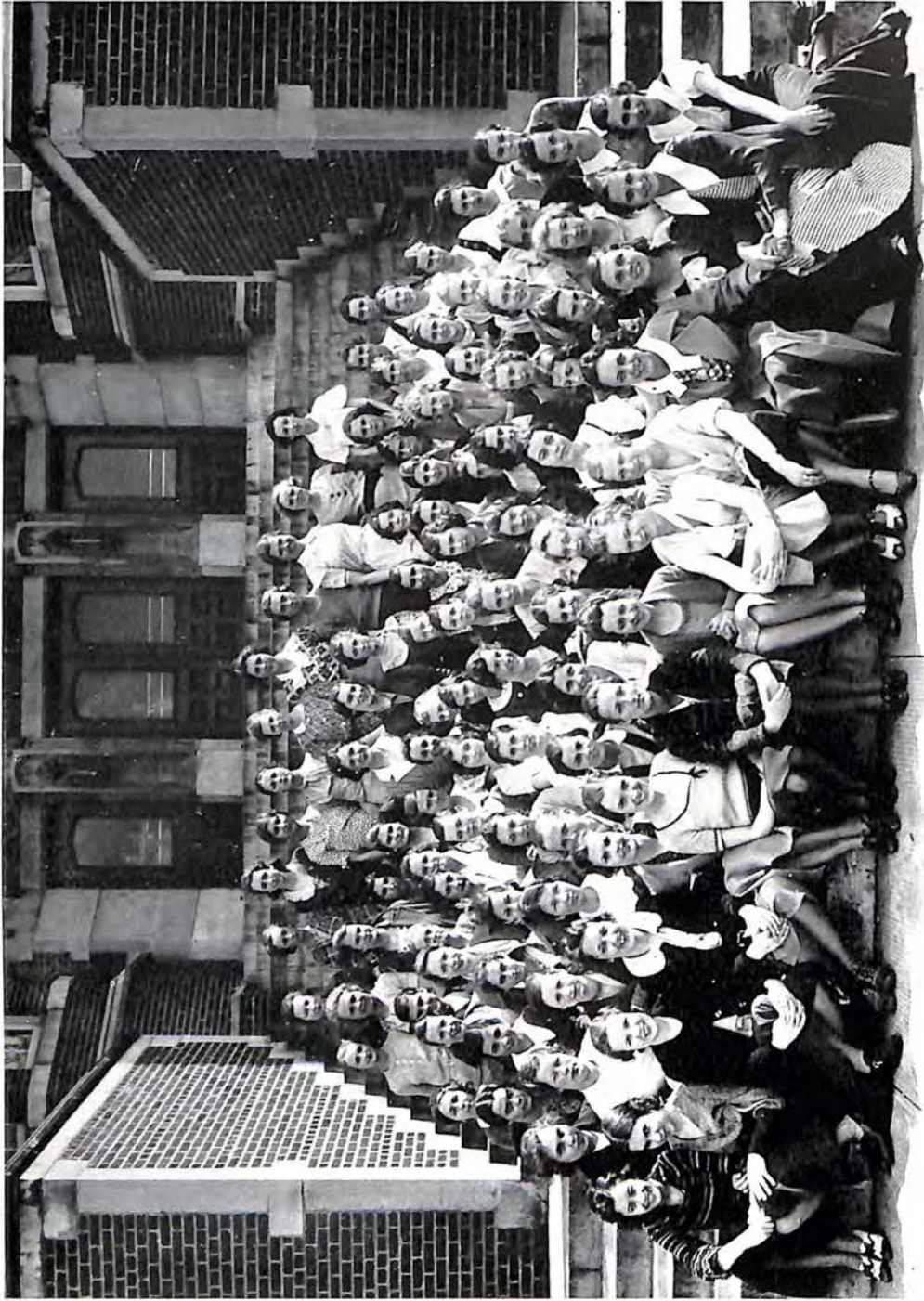
OFFICERS

<i>President</i>	LOUIS HANCOCK
<i>Vice President</i>	LEWIS KEEN
<i>Secretary and Treasurer</i>	GEORGE SCOTT
<i>Faculty Advisor</i>	H. FELIX SANDERS

MEMBERS

ROGER ALLEN
NEVILLE AMMEN
BOBBY BUTLER
POWELL CHAPMAN
BILLY DICKINSON
ED DOWDY
FRED ELLIOTT
JOE KEITH

DAVID KLING
GRATTAN LINDSAY
BILLY MCQUILKIN
EARL RASMUSSEN
GEORGE SCOTT
BOB SPESSARD
CONRAD STONE
BERNARD W. WOODAHL



THE MARTHA WASHINGTON LITERARY SOCIETY



The Martha Washington Literary Society

The Martha Washington Literary Society began the school year with a membership drive and social, and during the year increased the enrollment from sixty to one hundred and thirty-seven members.

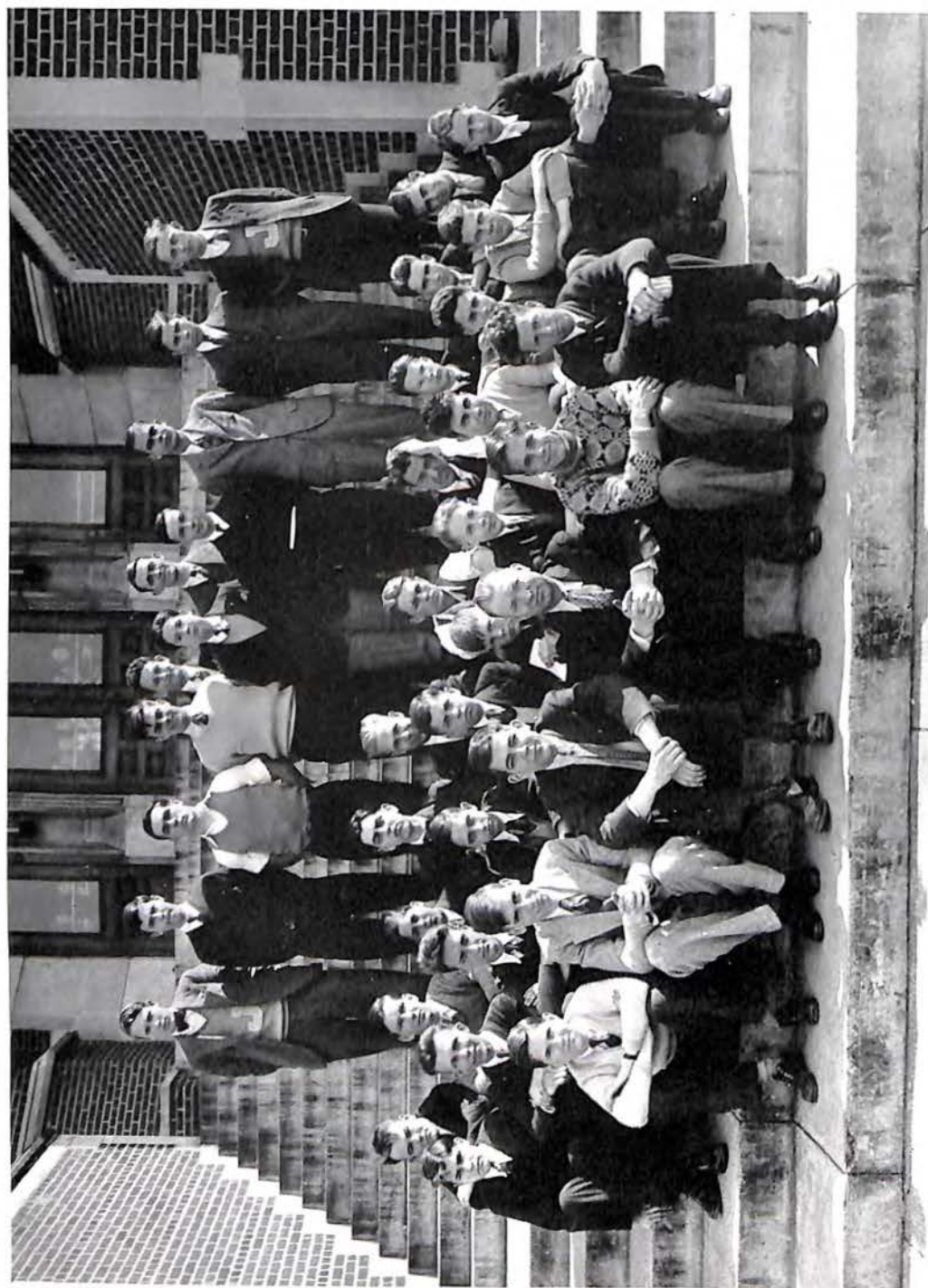
The fall program featured a "Travelogue," which conducted the Martha Washington Literary Society plane, the S-4, on a world-wide tour of the places of lore and interest. One of the outstanding factors of the spring program was the original *Pendleton Plays*—clever take-offs on the lives and habits of the great women of history which the Society was studying. Through the medium of the Martha Washington Literary Society, several girls won places on the literary team and represented Jefferson High at Charlottesville.

All members of this club participated with greatest interest and coöperation in all of its activities with the result that approximately twenty-two girls received letters or stars.

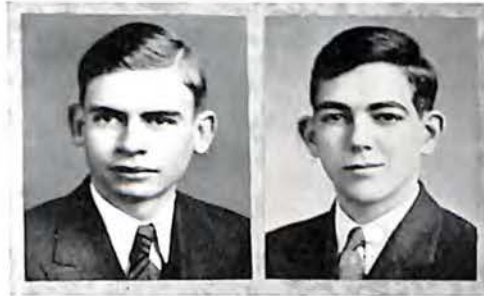
The phrase, "a successful year," may well conclude the annals of the Martha Washington Literary Society for the year of 1932-33.

OFFICERS

Fall, '32		Spring, '33
MARION RUTH DURHAM.....	<i>President</i>	ELEANOR GRAFF
ELIZABETH MOUNTCASTLE.....	<i>Vice President</i>	RACHEL PENDLETON
FRANCES WELLS.....	<i>Secretary</i>	EDITH STOKE
ELEANOR GRAFF.....	<i>Treasurer</i>	DOROTHY OULD
BONNIE LANE.....	<i>Reporter</i>	ANNAH LEE ELMORE
MARGARET CARPER.....	<i>Recorder</i>	MARGARET CARPER



THE JEFFERSONIAN LITERARY SOCIETY



The Jeffersonian Literary Society

The Jeffersonian Literary Society was the first boys' organization formed in high school, and is composed of around fifty boys. The Society sent to Charlottesville this year two debaters, a reader, a speller and a public speaker to contest in the State Literary and Athletic Meet. These were, in respective order: Jack Fishwick, Tom Rutherford, Ronald Bible, Pascal Owen and Ed Dowdy.

Throughout the year the Society discussed great men, governmental affairs and countries. They presented debates, speeches, poems, stories, humor and short skits. Often the members were entertained by vocal and piano selections. In the spring of the year a joint banquet was held with the Martha Washington Literary Society, which is comprised of girls.

The purpose of the Jeffersonian Literary Society is to cultivate stage presence and ability to speak fluently to an audience.

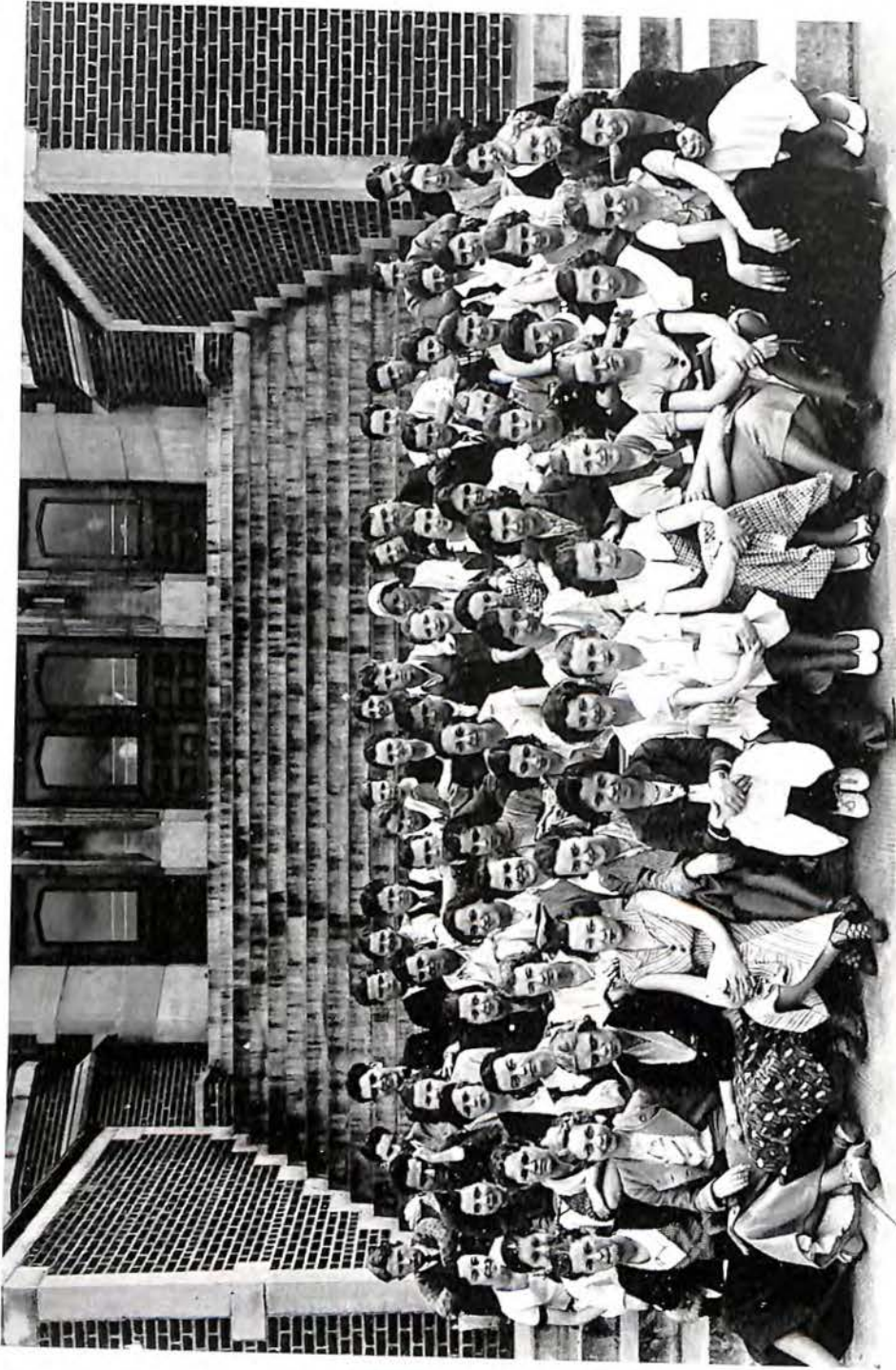
The Society of this year wishes the next year's club the best of luck and success.

OFFICERS

Fall, '32		Spring, '33
EDWARD DOWDY.....	<i>President</i>	TOM RUTHERFOORD
BERNARD WOODAHL.....	<i>Vice President</i>	MCCLURE WALTERS
CONRAD STONE.....	<i>Secretary</i>	RALPH LONG
RALPH LONG.....	<i>Corresponding Secretary</i>	RONALD BIBLE
EDGAR JONES.....	<i>Treasurer</i>	CONRAD STONE
HUGH BARTLETT.....	<i>Sergeant-at-Arms</i>	ROBERT WILSON

EXECUTIVE BOARD

ED DOWDY	RONALD BIBLE
BERNARD WOODAHL	HUGH BARTLETT
JACK FISHWICK	GEORGE ARMISTEAD
JOHN WILSON	
CHARLES DOWNS	



THE EXPRESSION DEPARTMENT



MISS CLARA BLACK
Director Expression Department

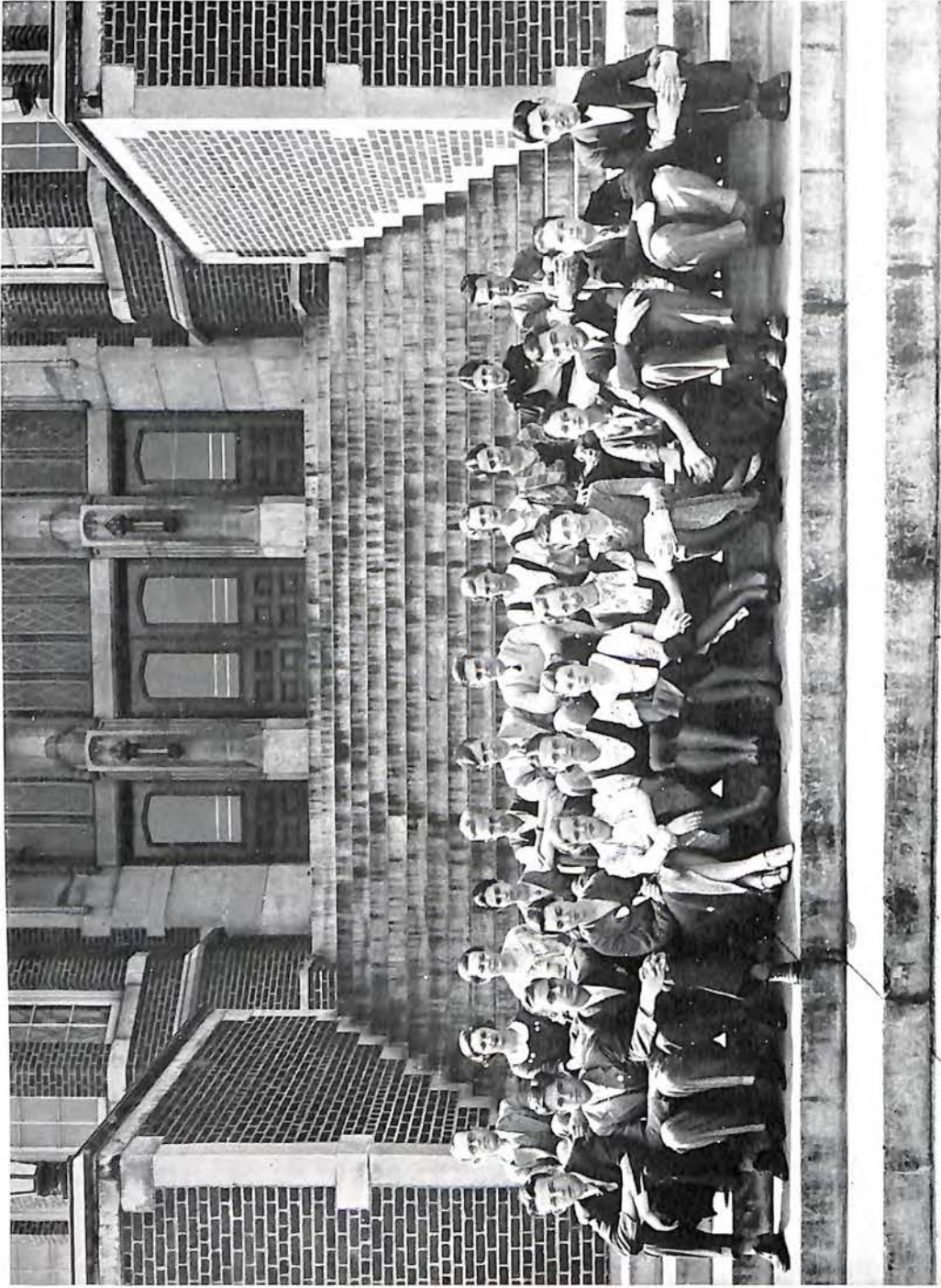
The Expression Department

One of the most active of the extra-curricular departments is the Expression Department. It includes very helpful classes in public speaking, "make-up," parliamentary law, and debating.

The increase in the number of members and the interest evinced in the classes is readily shown by the fact that in the first year of the department's existence there were about eighty members. At the present time there is an enrollment of about three hundred members.

The department is an enthusiastic backer of all high school productions, playing a large part in the "Jig Saw," and putting on a recital of their own in the early fall. This spring their play, *The Toy Heart*, went to Charlottesville to enter the Virginia Literary and Athletic League.

The department is under the competent and delightful instruction of Miss Clara G. Black, who is largely responsible for the success of this department. We expect further great things of this department, and are confident that our expectations will be fulfilled.



JOURNALISM



Journalism

The *Junior World-News* is the literary center of high school. It is the channel through which the clubs of Jefferson High communicate with the public. The staff daily edits a section in the evening paper, *The World-News*. This group of high school journalists writes sports news, editorials, club news, feature stories, columns, interviews and other interesting articles. The life of high school throbs through its veins.

Students on the staff acquire an active knowledge of journalism. They learn every phase of newspaper work, not only by daily practice, but also in the journalism classes conducted by the advisor, Mr. S. D. Bowman.

This year, the paper sent representatives to the Southern Interscholastic Press Association Convention at Washington and Lee, in Lexington, and also conducted a straw vote for the election of the President of the United States.

The Quill and Scroll is an international honor society for high school journalists. The members are students that have a high scholastic standing and a brilliant record in writing both on *ACORN* and *Junior World-News* Staffs; a selection of their writing is passed by a committee of Columbia University before they attain membership.

This organization sponsors writing contests through the year. In an international contest the sixth best editorial in the United States was written by a member, Alyce Joyce Cody. Many first places in headline writing, news stories, and editorials, have been won in the state contests.

The members are: Bonnie Lane, President, Bernard W. Woodahl, Anne Nelson, Dorothy Ould, Joe Coxe, Tom Rutherford, Charles Downs, Albert Coulter, Alyce Joyce Cody, Edward Dowdy, Mary Price, Jack Fishwick, Rachel Pendleton, Marian Ruth Durham and Annah Lee Elmore.

JUNIOR WORLD-NEWS STAFF

<i>Editor-in-Chief</i>	BERNARD W. WOODAHL	<i>Assistant</i>	CORRINE MCGHEE
<i>Assistants</i>	MARY PRICE AND GEORGE ARMISTEAD	<i>Organizations</i>	JACK FISHWICK, ANNA LEE
<i>Assignments</i>	EDWARD DOWDY		ELMORE, CHARLES DOWNS AND LAURA SWEET
<i>Assistant</i>	BONNIE LANE	<i>Reporters</i> ...	EDGAR JONES, HELEN SIGMON, TOM
<i>News Critic</i>	ALYCE JOYCE CODY		HOWELL, MILDRED TURNER, CHARLES STEELE,
<i>Assistant</i>	MARGARET STEVENS		VIRGINIA GOGGIN, MARTHA BELL NEVIN AND
<i>Make-Up</i>	MARGARET McMURRAY		BOB DEANS.



The Glee Club

The primary aim of the Glee Club is to inculcate in the students of Jefferson High a keener interest in and a better appreciation of good music. Contemporary with this aim is that of creating a better spirit of fellowship among music students.

The girls limit their membership to thirty, while the boys make no limitation. The members are selected from the members of the Choral Club by tryout committees appointed by the president.

In addition to the regular routine, each club has conducted a broadcast. The boys also exchanged programs with Radford High. The greatest achievement of the year was the Annual Recital presented in April.

OFFICERS

RUBY MATTOX.....	<i>President</i>	GEORGE GILLIAND
DOROTHY CARR.....	<i>Vice President</i>	ALBERT COULTER
MILDRED KENDRICK.....	<i>Secretary-Treasurer</i>	CONNIE STONE
RUTH HILL.....	<i>Reporter</i>	EDGAR JONES
JEANETTE DUNLAP.....	<i>Librarian</i>	WINTON NAFF, WARREN STOKE
		MISS BLANCHE HURLEY, <i>Faculty Advisor</i>



The Orchestra

The Jefferson High School Orchestra, under the direction of Miss Blanche Hurley, is composed of the most talented musicians in the school. The organization has added much enjoyment to the different activities of the school by its music.

Members of the Orchestra, while in high school, are being trained for work that will be of benefit to them after their high school days.

Reba Winn is president of this organization this year.



The Girls' Athletic Association

The G. A. A. is one of the most active clubs in high school. A membership drive began this year's program, and the large number of girls who joined, have entered enthusiastically into the club's activities.

During the first of the season, a "Jumbo Scrap Book" was started in which has been noted the different events and interests that the club has upheld.

The G. A. A.'s took a great interest in selling tickets to ball games and plays sponsored by the high school.

Swimming, which comes under the Physical Education Department and G. A. A., was also instituted this year.

The club's purpose—to encourage the girls of the schools in all phases of physical education, to promote good scholarship and school spirit, to establish the ideal of health, and to develop the true spirit of sportsmanship in all its members—has been manifested in all activities.

OFFICERS

<i>President</i>	VILREE HALE
<i>Vice President</i>	MYRTLE McCORMICK
<i>Secretary</i>	HAZEL SHEPARD
<i>Treasurer</i>	MARY OVERSTREET
<i>Recorder of Points</i>	MARY CAMPBELL
<i>Chairman of Program Committee</i>	GEORGIA WALKER
<i>Chairman of Poster Committee</i>	DIXIE WALKER
<i>Director</i>	MISS PAGE HARRISON



The Wishefu Club

The Wishefu Club is composed of Sophomore girls. This club prepares the girls for membership in the Girls' Club, when they become Juniors.

With the advice of Miss Lockman and Miss Verran, and the high ideals of the Club, which each member strives to live up to, the Club has had an enjoyable and prosperous year.

OFFICERS

<i>President</i>	BETTY LACY JONES
<i>Vice President</i>	ELEANOR DUKE
<i>Secretary</i>	THERESA GRAFF
<i>Treasurer</i>	PEGGY LAYMAN



THE GRASSCUTTERS



LITERARY TEAM



FROM THE AIR



CHEER LEADERS



ATHLETICS

The Acorn



A. D. HURT
Coach



The Football Squad

The Jefferson gridders were the victims of bad breaks for the most of the football season, but in the final games they staged an inspiring and thrilling comeback to prove themselves a truly great team. A smashing defeat of Lynchburg, Jefferson's ancient rival, was the climax of the season's play. The consistent ability of Captain Sowder, Haley, Nininger and Keith in the line, and the stellar play of Johnston, Clark, Williams and Tarpley in the backfield, were prime factors in the Magician victories.

THE SCORES

J. H. S.....	19—Radford	9
J. H. S.....	14—Hampden-Sydney Frosh	0
J. H. S.....	7—Norfolk	14
J. H. S.....	0—Danville	7
J. H. S.....	0—Salem	0
J. H. S.....	0—Winston-Salem	4
J. H. S.....	7—Ashland	33
J. H. S.....	7—Richmond	13
J. H. S.....	19—Bluefield	7
J. H. S.....	26—Lynchburg	0
J. H. S.....	32—Vinton	0
TOTAL.....	131	TOTAL..... 87


FOOTBALL



SOWDER - R.E.



JOHNSTON - H.B.



REID - C.



TARPLEY - F.B.



HALEY - L.E.



WILLIAMS - Q.B.



CRAIG - R.G.



AKERS - L.E.



WHITLOCK - F.B.



NINGER - R.T.



ST. CLAIR - H.B.

1932



PHIPPS - HB.



BOLLING - L.T.



HUMPHRIES - LT



CLARK - HB



GOUGH - L.G.



TICE - H.B



KEITH - R.G.



HANCOCK - C.



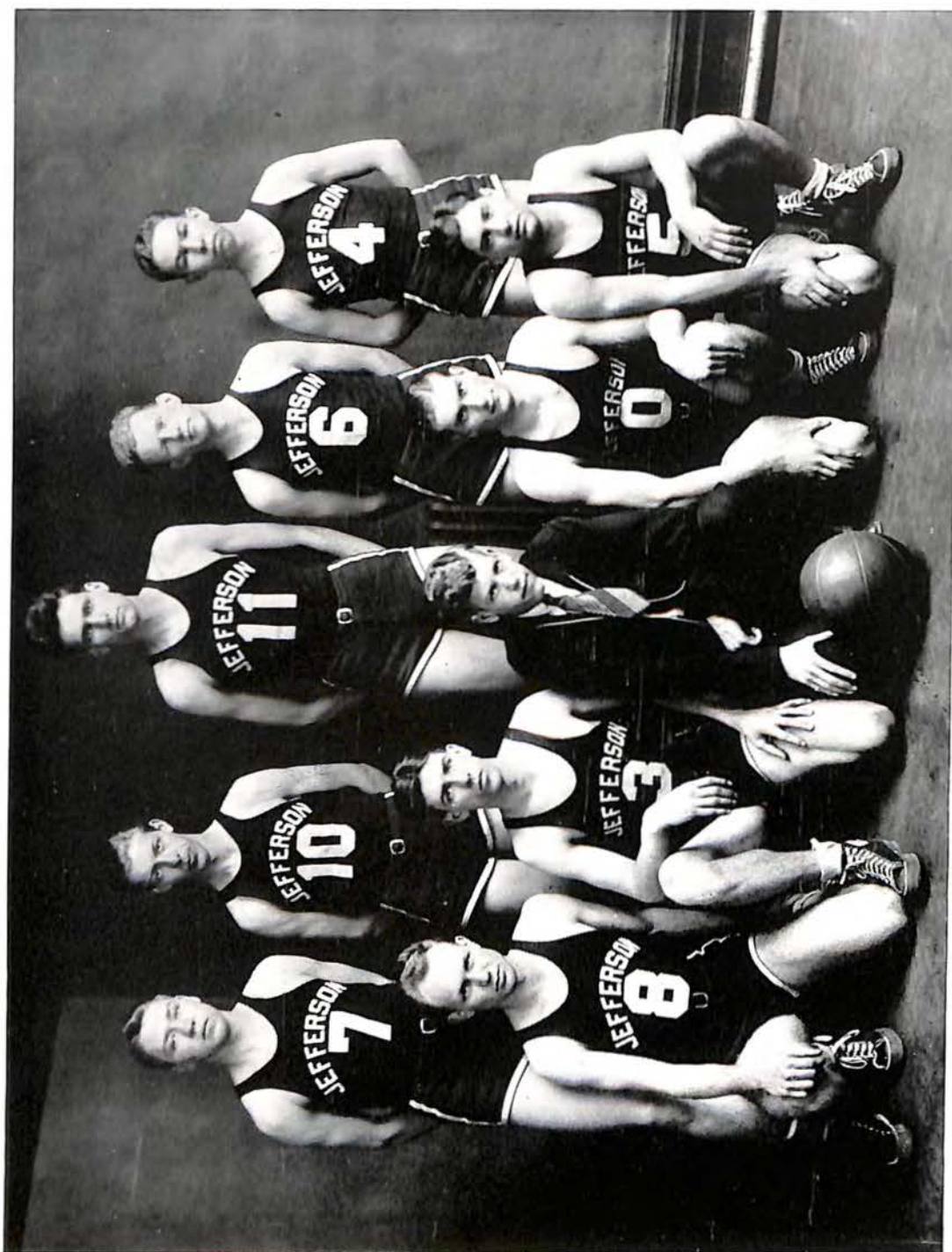
TERRILL - LE



STOCKTON - G



SIMPSON - L.T.



THE BASKET BALL SQUAD

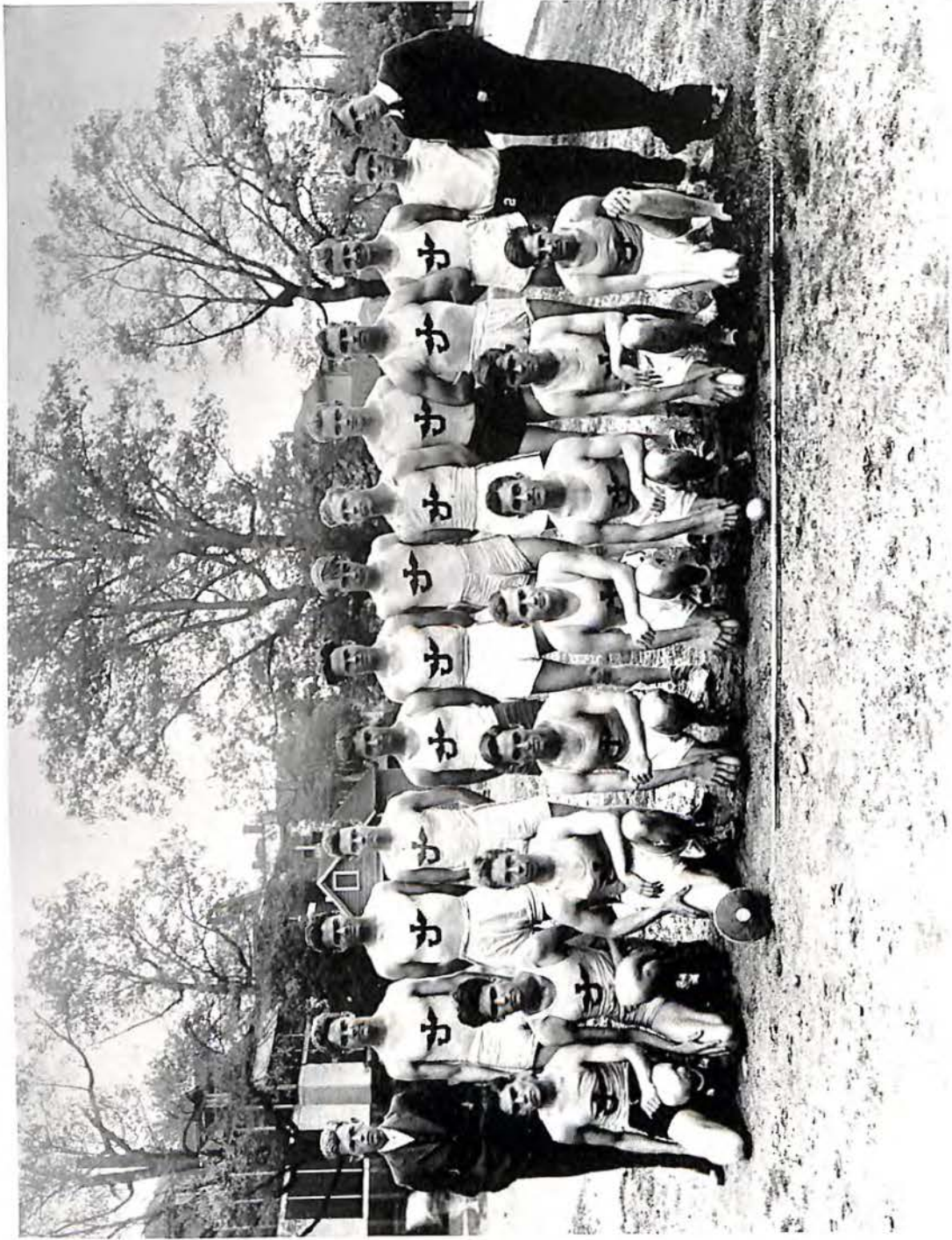


The Basket Ball Squad

The Magicians have again proved their worth by downing their opponents in the majority of the games played this season. Out of twenty-nine games, they won twenty-one. The work of Captain Joe Keith, Spessard and Weddle is especially commendable.

SCORES

J. H. S. 44—Y. M. C. A. 11	J. H. S. 48—W. and L. Freshmen 27
J. H. S. 20—Viscose 16	J. H. S. 22—Danville High 34
J. H. S. 27—Clover Creamery 18	J. H. S. 27—Salem High 19
J. H. S. 40—Salem Creamery 36	J. H. S. 59—Randolph-Macon Academy 12
J. H. S. 24—Champions of '29 35	J. H. S. 30—Salem Creamery 34
J. H. S. 31—Vinton High 13	J. H. S. 18—University of Richmond . . . 42
J. H. S. 29—W. and L. Freshmen 42	J. H. S. 53—St. Andrew's High 12
J. H. S. 17—Danville High 43	J. H. S. 35—Vinton High 7
J. H. S. 23—V. P. I. Freshmen 20	J. H. S. 23—Lynchburg High 10
J. H. S. 42—Salem High 19	J. H. S. 30—Clover Creamery 16
J. H. S. 42—Randolph-Macon Academy 12	J. H. S. 28—Standard Oil 26
J. H. S. 22—V. P. I. Freshmen 18	J. H. S. 32—Shawnee 37
J. H. S. 43—Salem Creamery 32	J. H. S. 32—Y. M. C. A. 25
J. H. S. 32—Portsmouth High 37	J. H. S. 45—Clover Creamery 30
J. H. S. 19—Lynchburg High 11	



THE TRACK SQUAD



The Track Squad

Captain Johnston led Jefferson's track team through a successful and active season by twice beating the state records for the 100 and 220-yard dashes. Following closely on the captain's heels came Wayt Clark, high jumper, and twice breaker of the state record for the javelin throw. Ned Gough did a most thorough job of hurling the little round plate known as the discus, and distinguished himself in the pole vault.

The relay team, composed of Akers, Johnston, Robertson and Phipps, attended the Penn Relay at Philadelphia and won honorable recognition.

Although the team lost its meet with the Techmen, it conquered the Keydets of V. M. I., boys from Clifton Forge, and the ancient rival, Lynchburg.

The team, at the time this was written, held high hopes for the outcome of the State Meet at Charlottesville.

RECORD

J. H. S.....	61½—Lynchburg	55½
J. H. S.....	61 —V. M. I.....	56
J. H. S.....	54 —V. P. I.....	63
J. H. S.....	98⅓—Clifton Forge	18⅓



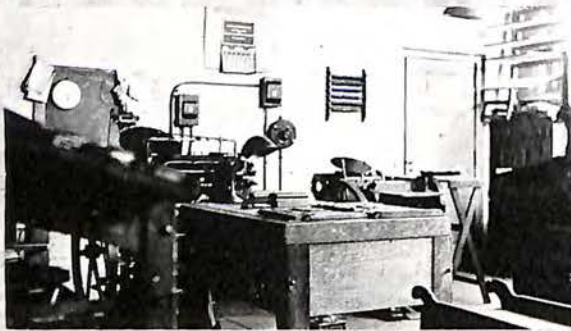
LUNCH TIME



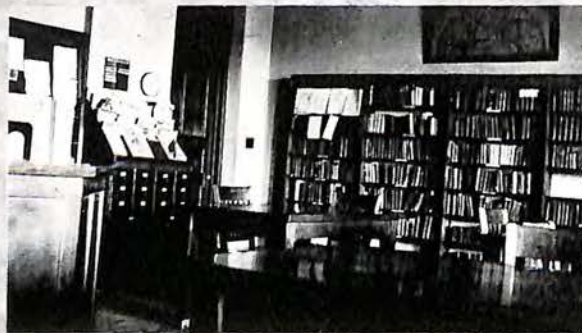
ART DEPARTMENT



"INTELLIGENTSIA"?



PRINTING DEPARTMENT



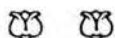
BOOK-NOOK

ASHER

CLEANERS AND DYERS, Inc.

1607 SOUTH JEFFERSON STREET

TELEPHONE 1067



“SERVICE THAT SATISFIES”

“THRU THE BLOCK”

QUALITY CLOTHES

FOR BETTER DRESSERS, MEN, WOMEN, BOYS AND GIRLS

ASK ABOUT OUR STUDENTS' DISCOUNT

STETSON
HATS

OAK HALL
M. Rosenberg & Sons, Inc.

REGAL
SHOES

“SINCE 1889”

ATLANTIC GREYHOUND *Lines*

Powell Dance Studio
Specialists

BALLROOM AND TAP DANCING

412½ SOUTH JEFFERSON STREET



Roanoke's Pioneer Dance School

Art Printing Company

"EVERYTHING IN PRINTING"

Engraving, Ruling and Binding

J. A. MANUEL, Manager

Telephone 107

25-27 KIRK AVENUE, WEST

ROANOKE, VIRGINIA

SAFETY FIRST

Always All Ways

The Dependable, Economical Way
to and from school is by
Trolley or Bus

ROANOKE RAILWAY AND
ELECTRIC COMPANY

SAFETY MOTOR TRANSIT CORP.

PATRONIZE PATTERSON'S

SODA FOUNTAIN

DELICIOUS TOASTED SANDWICHES
AND SUNDAES



Patterson Drug Co.

308 South Jefferson Street

**Brotherhood Mercantile
Company**

*Clothing for Men and Young
Men who want stylish suits;
and two pairs trousers,
mind you!*

107 SOUTH JEFFERSON STREET

ROANOKE, VIRGINIA

SPORTING GOODS

Whatever you need in sporting goods,
whether for the individual or the complete
team, we have it

*Every School Necessity is Also a Feature of
Our Large Stock*



105 South Jefferson Street

*There's an Atmosphere
About Hotel Roanoke . . .*

. . . that will make any banquet,
party or dance a success. Ample
garage and outdoor parking space

Call 3400 about Reservations and Arrange-
ments

HOTEL ROANOKE

Kenneth R. Hyde, Manager

BEAUTIFUL FLOWERS

ARRANGED
PROPERLY



FALLON Florist

TELEPHONES 1687-1688



Grade "A" Milk, Ice Cream, Too!
Makes Complete Your Menu.

CLOVER CREAMERY COMPANY

THE UNIVERSITY SHOP OF ROANOKE


Glenn-Minnich

*The Young Men Shop - 106 W. Campbell Ave.
Society Brand Clothes*

ROANOKE, VIRGINIA

STYLE IS THE THING

FIRST ← → BECAUSE THEY → → LAST

GOLDSMITH
ATHLETIC GOODS

Roanoke Hardware Co.

22 West Campbell Avenue

Roanoke Paper Co. Inc.

*Wholesale Paper, Stationery
and School Supplies*

117 Norfolk Avenue, West

'Phones 1680-1681

Distributors of the FAMOUS Washington
Line of School Tablets

KIDD STUDIO

Six successive years' service for
THE ACORN have made our
pictures TALKIES

21 WEST CAMPBELL AVENUE

TELEPHONE 253

TOP COATS

HATS

Airheart-Kirk Clothing Company

YOUTHS' DEPARTMENT

FEATURING HI-Y PREP SUITS

FOR THE HIGH SCHOOL MAN

SHOES

SWEATERS

When married, let us
furnish your
home

REID & CUTSHALL

209-211 Campbell Avenue, West

EAT
TOP-N-OCH
BREAD
MADE WITH MILK

♦ ♦ ♦ ♦

MADDOX & JENNINGS

We sell, guarantee and
maintain Cadillac and
La Salle Automobiles

WAYNICK-CADILLAC Co.
INCORPORATED
ROANOKE, VIRGINIA

COMPLIMENTS OF
Park Street Pharmacy
GEORGE B. SHEPPE
DRUGGIST

Corner Marshall Avenue and Park Street
TELEPHONE 1000

CHAS. I. LUNSFORD KIRK LUNSFORD
JAS. J. IZARD

Chas. Lunsford & Sons
General Insurance

Colonial-American National Bank
Building
Telephone 2060

FOR JEWELRY OF ALL KINDS SEE

Renalds & Woodson
*Manufacturing Jewelers
and Watch Repairing*

5 EAST CHURCH AVENUE
ROANOKE, VIRGINIA

COMPLIMENTS OF
Peoples Ice and Storage
Company

526 FIRST STREET, SOUTHEAST
Phones 928-929

Art Barber Shop
210½ JEFFERSON STREET
EIGHT BARBERS (WHITE)
We Specialize in Sport Bobs for
Ladies
Men, 25¢ . . . Ladies, 35¢



LEARN TO PLAY POPULAR MUSIC IN SIX MONTHS

DICK MARSHALL

TEACHER OF POPULAR AND CLASSICAL MUSIC

STUDIO TELEPHONE 1861-J



AFTER THE DANCE OR PARTY

STOP AT

XXX Thirst Station

JEFFERSON STREET AND
WALNUT AVENUE

Chick & Calhoun

Grocers



128 WEST CAMPBELL AVENUE

*Bowman's Bakery Products
Are Full of Nourishment*

For your stomach's sake call for
them by name at your grocer's

A. BOWMAN & SON

Telephone 3073

ELECTRICALLY AT YOUR SERVICE

**Richardson-Wayland
Electrical Corp.**

*Electrical Engineers
and Contractors*

122 CHURCH AVENUE, WEST

*W. S. McClanahan
President*

*Harvey B. Gray
Vice Pres. and Sec'y*

W. E. McClanahan, Treas.

W. S. McClanahan & Co.
Incorporated

ESTABLISHED 1893

General Insurance and Security Bonds

23 West Campbell Avenue

TELEPHONE 100 ROANOKE, VIRGINIA

GUY'S, Inc.

CANDIES . . . SMOKES
LUNCHEONS



"MEET ME AT GUY'S"

WELLONS TAILORING COMPANY

TAILORING FOR YOUNG MEN

THE OLDEST BARBER SHOP IN ROANOKE
IN ONE OF ROANOKE'S NEWEST BUILDINGS



Colonial-American National Bank Barber Shop
COLONIAL-AMERICAN NATIONAL BANK BUILDING (BASEMENT)

HAIR CUTS, 25c :: *Six Expert Barbers*

Roanoke Jewelry Co.

32 Salem Ave. Through to 31 Campbell Ave.
Campbell Ave. Entrance Through
People's Drug Store

*Official High School Rings
Gift Department*

TELEPHONE 405 ROANOKE, VIRGINIA



Serving Roanoke Through 27 Modern
Food Stores

THE KROGER GROCERY AND
BAKING CO.

JOIN THE RANKS OF
THE WELL-GROOMED
MEN

Mitchell Clothing, Inc.

ROANOKE, VIRGINIA

The Shenandoah Life
Insurance Co.

*Protection for
Everyone*

“The Acorn” Urges the Parents and
Students of Jefferson High
School to Patronize
Its Advertisers

The Spirit of Jefferson High

THE ACORN Staff is endeavoring to faithfully portray the Spirit of Jefferson High. Show your loyalty by cooperating in every way possible.

As in the past, we, the printers, will devote our best efforts to assisting the Staff in their work.



THE STONE PRINTING AND
MANUFACTURING COMPANY

EDWARD L. STONE, *President*

TELEPHONES 1643-1644

ROANOKE, VIRGINIA



ROANOKE PUBLIC LIBRARY



0 1195 03384081