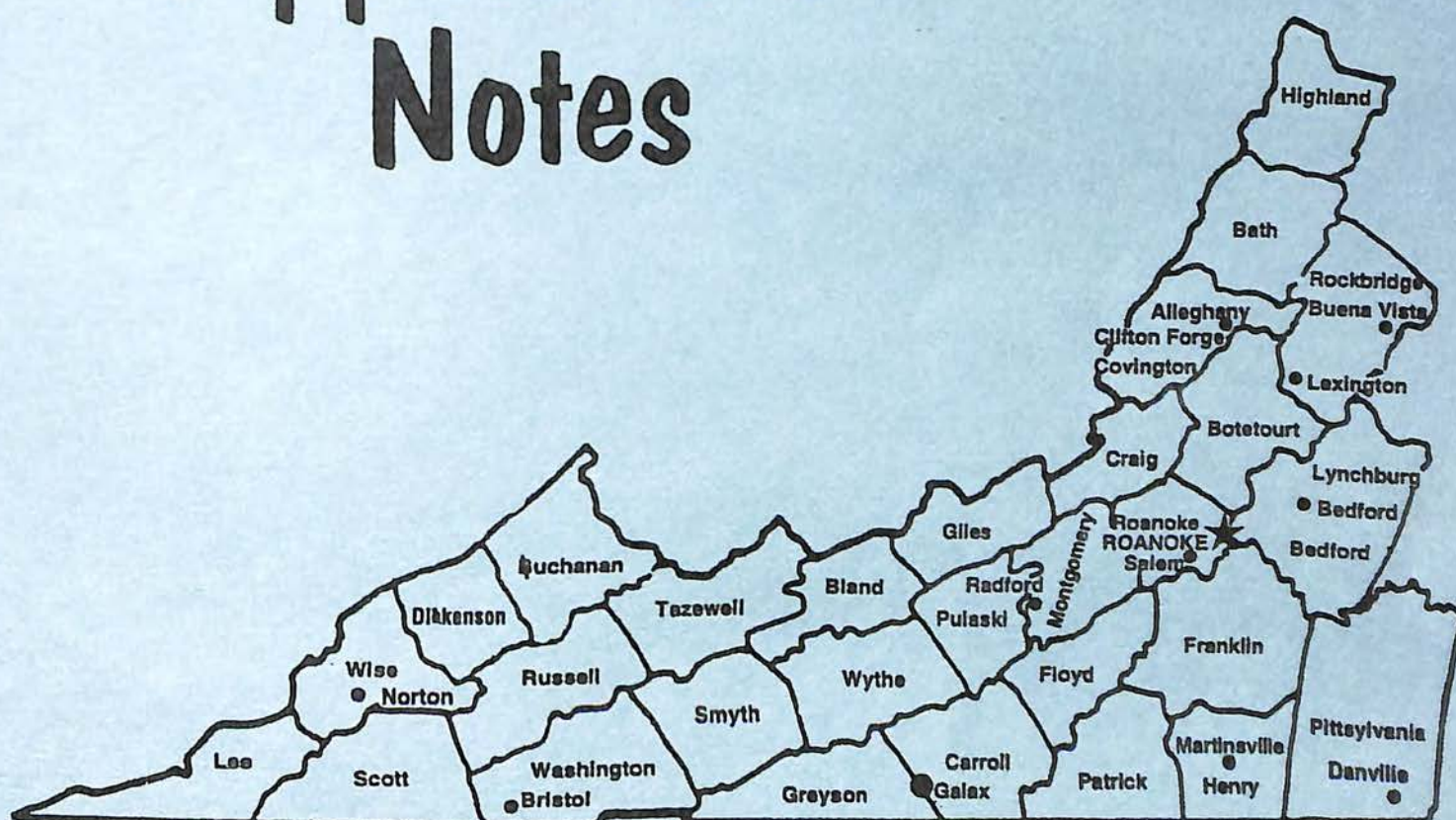




Roanoke City Public Library
Virginia Room

SPRING 2005

Virginia Appalachian Notes



Southwestern Virginia Genealogical Society
Roanoke, Virginia

VIRGINIA APPLACHIAN NOTES

Published Quarterly

By

SOUTHWESTERN VIRGINIA GENEALOGICAL SOCIETY, INC.

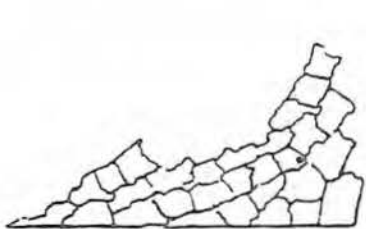
Vol. 29 - No. 2 - Spring 2005
(April, May, June)

CONTENTS

Minutes of the Special Executive Board Meeting and Award Winners	51
News Release	52
Signs of the Times-contributed by Ora Bell McColman and Judy Blackwell	53
Early Landowners of Pennsylvania	56
History of the Bedford Public School-continued	57
Hon. P.F. St. Clair Obituary-contributed by Judy Blackwell	65
Order Book A, Greenbrier County, (West) Virginia-contributed by Margaret Thompson	68
Queries	73
M.G. Tutwiler Bible and Dr. J.B. Garland Obituary-contributed by Mrs. Douglas Boynton	74
Book Review	78
From the Virginia Room	79
Churchwood School, Belspring, VA 1904-1905-contributed by Judy Blackwell	81
Botetourt County, Virginia Death Records continued- collected by Charles T. Burton, transcribed from cards by "Babe" Waskey Fowler	84

In Memoriam: William H. Walters, 12 May 2004. A book has been placed in the Virginia Room in his honor.

New Member: Betty Ruth Johnson, Eagle Rock, VA



Southwestern Virginia Genealogical Society, Inc.

P. O. Box 12485
Roanoke, Virginia 24026

May 2005

Dear Friends,

We did get an education on the workings and needs of libraries. In addition to the expected books and microfilms to augment collections, shelving and repair of a reader/printer was requested. Projects included digitizing or microfilming of early newspapers, cemeteries and photo collections. The purchase of archival quality materials to properly preserve or to reorganize collections. And there were more.....quite a challenge!

Be sure to read the published minutes of the March 22 special meeting of the Executive Board to select recipients of grants. It was very difficult to schedule because the members who are 'retired' are busy with volunteer work. Only two could not attend; Elaine had to work and Fred was volunteering. I think we all feel very good about the success of the Grants Program and hope you do!

The spring issue will be a little early to work around vacation plans of committee members. The publishing committee expresses their appreciation to several members who have contributed work, they have done or have found during research, to the VAN. The search for articles is constant. Do you have research you would like to share? Please do, and do not forget to cite your sources.

Remember, the summer issue will not have a Surname Index this year. Consider sending a Query to locate others researching the same names. The committee has experienced an increase of queries recently as members are reaching out for help. Each member is allowed two queries per issue.

The program for the May 21st meeting will be presented by Circuit Judge Gino Williams titled "Researching Floyd County".

Best regards,
Gene

SOUTHWESTERN VIRGINIA GENEALOGICAL SOCIETY, INC.

Executive Board Minutes

Special Meeting

March 22, 2005

The meeting was called to order at 1:00 P.M. in the Brody Room of the Roanoke City Main Library. The purpose of the meeting was to select winners of the Grants to Libraries and Historical Societies in our southwest Virginia area.

Present: Gene Swartzell, Babe Fowler, Mickey Prescott, Jim Nelson, Karen Kappesser, Don Vaughan and Winfred Hart.

Absent: Elaine Powers and Fred Anderson

The response to the Southwestern Virginia Genealogical Society's grant announcement was extremely positive. We had many applications with requests coming from most of the counties in southwest Virginia. The Society is both pleased and challenged by this response, the challenge having been to select winners from among so many worthy and deserving projects.

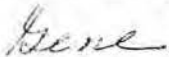
Every member of the executive board was given a copy of each application ten days prior to the meeting for their consideration. The projects and needs of the applicants were reviewed. Elaine could not be present, but submitted her preferences.

A list of Award winners and their projects is attached.

The Award Letter by Elaine Powers was approved: Awards will be mailed and letters of notification will also be sent to unsuccessful candidates.

Adjournment: 2:20 P.M.

Submitted by



Gene Swartzell,
Acting Secretary

AWARD WINNERS

Bassett Historical Center	Bath County Public Library
Bath County Historical Society	Bedford Public Library Systems
Botetourt County Libraries	Clifton Forge Public Library
Franklin County Historical Society	Giles County Historical Society
Wise County Historical Society	Wythe County Historical Society
Lonesome Pine Regional Library	Coeburn Community Library.
Roanoke Public Libraries -Virginia Room	

NEWS RELEASE

The Western Pennsylvania Genealogical Society and the Genealogical Society of Pennsylvania have reached an agreement to hold a state-wide genealogical conference in Pittsburgh on September 29 and 30, 2006. This event, the first state-wide genealogical seminar held in the Commonwealth of Pennsylvania, will undoubtedly draw considerable numbers of family historians to Pittsburgh because Pennsylvania is a genealogically significant state. For three centuries the Commonwealth of Pennsylvania has been one of the most populous colonies or states, so many family historians can track their ancestry back to Pennsylvania.

Program specifics will be announced later in 2005. Conference planners, John T. Humphrey and Barbara Braden Guffey, have noted the program will feature presentations that will discuss all aspects of Pennsylvania research along with computer and Internet topics as well as not-to-be missed methodology lectures.

Both societies have experience running large conferences. In 1997 the Genealogical Society of Pennsylvania hosted the NGS Conference held at Valley Forge, and in 2003 the Western Pennsylvania Genealogical Society hosted NGS's Centennial Conference. Both conferences were among the most successful events NGS has held.

Society websites: www.wpgs.org and www.genpa.org.

For further information contact Barbara Braden Guffey, guffeyb@verizon.net or 412-487-3907

SIGNS OF THE TIMES

ARTICLES

6130 Old Cifax Road
Forest, VA 24551
Oct 14, 2004

To the Signs of the Times,

I have had the blessed privilege recently to examine an old family Bible belonging to the late Elder Henry Valentine Cole who lived in Floyd County, Virginia, near Locust Grove. This Bible is now in the possession of Elder Cole's granddaughter, Nancy Cole Leftwich of Madison Heights Virginia.

Elder Cole's parents, Fleming and Abigail Vest Cole were among the early settlers of Floyd County. His paternal great-great-grandfather was Joseph Cole, a soldier in the Revolutionary War. On Oct. 18, 1877 he married Miss Tempy Lawrence A document found in the Bible states the following: Laurel Creek Primitive Baptist Church Floyd County Va. Saturday before the fourth Sunday in July 1897 Henry Valentine Cole is liberated to go into all the world wherever the Lord may cast his lot and preach the Gospel of Christ. Amos Dickerson, Moderator, A.F. Ferguson Clerk.

Elder Cole faithfully served various Primitive Baptist Churches in the Floyd area including: Laurel Creek, Valley View and County Line and others. He was a close friend of Elder P.G. Lester who was one of the

editors of the Primitive Baptist publication "Zion's Landmark".

Elder Cole was instrumental in the establishment of the Locust Grove Telephone Company and also served as it's president. He was also a well known schoolteacher in Floyd County and also served the County in the capacity of land assessor and justice of the peace. He and his wife were blessed to celebrate their 50th wedding anniversary in 1928 before his death on Dec 12, 1935 at the age of 82 years.

In his family Bible Elder Cole documented a very accurate record of all the persons he baptized in the time period 1901-1925. No doubt many of the names listed have descendants still living in the Floyd County and Roanoke, Virginia area.

I have attempted to transcribe this list as accurately as I possibly could. I stand to be corrected on some of the spelling as some of it was not legible due to the age and condition of the paper.

Perhaps you would like to publish these names in some future edition of the "Signs" I am also including a photo of Elder Cole and his wife, Tempy Lawrence Cole, a memorial that Elder Cole wrote on the occasion of his mother's death in 1924 and a copy of a Circular Letter to the churches of the Smith River Association in 1897 also found in the Bible. Any or all of this you are more than welcome to publish. I hope it will be of interest to some of the readers.

SIGNS OF THE TIMES

Respectfully submitted,
Steve A. Everett, Forest, Va.



Elder Henry Valentine Cole and wife
Tempy Lawrence Cole

*A record of persons baptized by
Elder Henry Valentine Cole
1901-1925*

Cole Shanks-1901
Frazier Sowers wife-1902
Austin Martin and wife-1902
Andy J. Martin's wife-1902
Cannon Smith-1902
Wilmouth Jane Conner wife of George
B. Conner-1902
Carra Munsey, wife of Kyle Munsey 1902
widow Dillon (near Auburn)
Wife of Jack Peters
James Maxey
Ellen Roop wife of James Roop-June
1903
Sallie H. Phillips (a widow)-June 1903
Elzora Poff Wife of James Poff - August

4, 1904
Cannada Light-August 16, 1904
Osburn Sowers-May 26, 1907
Charles Reed-August 7, 1907
William C. Booth - May 26 1907
Charles Poff-August 11 1907
Mrs. James Lemon and Daughter Mrs
Plegar-Sept 1907
Joseph Board and wife-Sept 19 1907
Miss Ida Dobyns-Oct 6 1907
Mrs. William H. Poff Nov 9 1907
Miss Bet tie Spangler-May 1908
H. A. Spangler-June 1908
Columbus Rakes-Nov 1908
Letcher Cole-May 1909
Noah Spangler and wife-Oct 3, 1909
Archie Sowers-Nov 1909
Mary Cole Kyle Cole's wife-Nov 1909
A Sister Willis at Salem Church-March
18, 1910
Laura O Board wife of Ras Board-March
27 1910
Pearly Cole wife of Letcher Cole -March
27, 1910
Eliza Cannady wife of Otho Cannady-1st
Sunday in June 1910
Cloe Martin wife of J. T. Martin-Aug. 27
1910
Oma Board wife of Henry Board-Aug. 27,
1910
Fouch Cole wife of Waller S. Cole -Aug.
27, 1910
Mrs. Conner wife of Walter Conner -Aug
27, 1910
Florence Lester wife of William Lester-
June 1910
Samuel and wife-Jan 1911
Henry Board-Jan 1911
Mrs. Amelia Poff wife of Riley Poff April
8 1911
Miss Sarah Furrow-April 9 1911
Charles Poff's wife-July 8 1911
Giles Martin's wife-July 8 1911
Samuel Terry-July 22 1911
Samuel Nowlin-July 22 1911
S. M. Poff-July 29 1911
Oscar Wickman's wife-Aug 4, 1911
Vinie Mills-Aug 4, 1911

SIGNS OF THE TIMES

Mrs. Oscar Poff-Aug 12, 1911
 Mrs. Charles Reed-Aug 12, 1911
 Robert Conner and wife-June 16, 1912
 Both couples baptized at Laurel Creek
 Jasper Jones and wife-June 16, 1912
 Mrs. Smith-June 23 1912-County Line
 Sister Janie Nichols-July 14, 1912-Salem
 Mary E. Poff (Wife of K. Poff)-Sept 29, 1912-Salem
 Lucy Austin-Oct. 13 1912 *Maude*
 Mande Blackwell (wife of Arthur)-March 22, 1913
 Mrs. Gracie Basham-Aug. 17, 1913
 R. H Bugg - Aug. 24 1913
 Annie Wilson - Aug. 31, 1913
 H. A. Conner and wife-Sept. 18, 1913
 Joseph Clower-2nd Sunday in June 1914
 Wife of Tom Trail 4th Sunday in Aug. 1914
 James Ferano and wife, Abigail-2nd Sunday in June 1915
 Lucy Martin-2nd Sunday in June 1915
 Mrs Cynthia Booth (date not stated)
 Lemuel Farris and wife (date not stated)
 Mrs. Poage Sept 29, 1917
 Mrs. Jarrels-May 1918
 Mrs Palmer-1918
 Mrs. Hattie Collins (widow)-May 25, 1919
 Waskie Conner and wife-July 13, 1919
 Ervine Poff's wife-July 13, 1919
 Mrs. James Conner and daughter, Oakey-April 1921
 William Turner-April 1921 at County Line
 Balard Dobyns-June 5, 1921
 Joseph Justin-Aug. 14, 1921
 Thomas Agee and wife-Aug. 20, 1921
 the widow Aldridge-July 29, 1923 (for Pure Creek)
 Mrs. Robert Smith-1923
 D.W. Vest-1925
 Mrs Homer Kelly-Oct 4, 1925
 Dallas Young-Oct 12, 1925
 Sam Poff-Oct 12, 1925

Mr.Mrs Roy Conner, Laura Conner-Nov. 8, 1925
 J.D. King-Nov. 8, 1925
 Mary Conner, widow of John Aaron Conner
 (handwriting very shaky on last entry)

I will try to write a few lines in memory of the death of my mother Abigail Cole who died on the 8th day of Dec. 1924, at the age of 91 years and 2 months. She was a member of the Primitive Baptist church for about 68 years and had the confidence and fellowship of the church, and lived at peace among her neighbors and was always ready to make any sacrifice that she could make for their comfort. She lived a widow for 36 years. Her husband, Flemming Cole, died in the year 1888. The writer was the only child. She leaves 5 living grand children. O.F., S.W., S.L., C.R. and Minnie M. Cole and several great-grand children, and while she lived with us was old and feeble, yet we miss her and feel so sad and lonely and when we enter her room we are made to feel so keenly that we have no mother. She always tried to impress upon our minds the vital principals of morality and industry. She was called aunt Abbie by all the neighbors and was loved and respected by all so far as I was able to know.

H. V. Cole

Early Landowners of Pennsylvania: Atlas of Township
Warrantee Maps of Washington County, Pa.

Ancestors Tracks (www.ancestortracks.com) has introduced the first of its county atlas series, early Landowners of Pennsylvania: Atlas of Township warrantee Maps of Washington County, Pa. Those township maps, which are on file at the PA Archives in Harrisburg, show the earliest surveys of tracts in each township; names of the warrantee and patentee; dates of the warrant, survey, and patent; and the patent book and page. What I found unique and so handy is that the township warrantee maps, which are typically extremely large and hard to handle, have been reduced to page size for easy use and coordinates have been added to them. All the information for each landowner has been detailed into easy-to-read tables for quick reference. Since each tract has coordinates, you can locate the tracts of your ancestors and their relatives and neighbors on the map easily. They have added copious footnotes from published county histories, as well as an everyname index. You can see a sample page of their book at <http://ancestortracks.com/washblurb.html> (click on "information found on this map"). There is also a CD of the maps available, which makes it possible to zoom in for details.

This series will, for those of you with Western Pennsylvania ancestors:

- *Pin your families to exact locations prior to the 1790 census.
- *reveal family relationships you might not have realized. Relatives tended to live next to each other in those times so tracts that are contiguous could indicate new family ties.
- *Trace the progression of families and neighbors as they moved across Pennsylvania
- *Locate wills, church records, deeds and orphan court records by showing which towns your ancestors lived in
- *Help plan a trip to the land of your ancestors, so you can walk where they walked and feel your roots
- *Give flesh to your ancestors by helping you find historical events in the county histories where they lived
- *Uncover the history of modern land tracts.

Copies of the Washington County Atlas & CD are available from either Ancestor Tracks (ancestortracks.com) or Closson Press (clossonpress.com) at a cost of \$30: the CDs are \$15. The second volume, Early Landowners of Pennsylvania: Township Warrantee Maps of Fayette County, PA., is being printed and will be released any day now. They have also published a book detailing the Virginia land transfers entitled Early Landowners of Pennsylvania: Land Tracts Transferred from Virginia to Pennsylvania 1779-1780 for \$25 and a CD of Caldwell's Illustrated Historical Atlas of Washington County for \$25. (Sent to us by Sharon MacInnes, WPGS member #5924)

Credit *Jots from the Point*, April/May 2005, Vol 31 Number 5, p. 73
Western Pennsylvania Genealogical Society, Inc

LIBERTY ACADEMY



LIBERTY ACADEMY ELEMENTARY SCHOOL
of CENTRAL DISTRICT, BEDFORD COUNTY
—ESTABLISHED 1936

ALLEN MT.

FIZER

KRANTZ

STONEY FORK

EBENEZER

CENTERVILLE

LOWRY

OTTERVIEW

FAIRVIEW

WOODLAWN

WHEATLAND

BLOUNT

TRINKLE

CALVARY

FOREWORD

Hidden away along the by roads of Central District lie the remains of the little schools where generations of Bedford's citizens learned their three R's. Well remembered by those who once walked weary miles to school, the little buildings have now felt the hand of progress. Like many of the beloved things of old, there was no place for them in this modern age. Hallowed in our thoughts, these old remains stand as another example that "the old order changeth". As Bedford enters her Third Century, the school house of yore is replaced by the modern classroom and the familiar yellow buses.

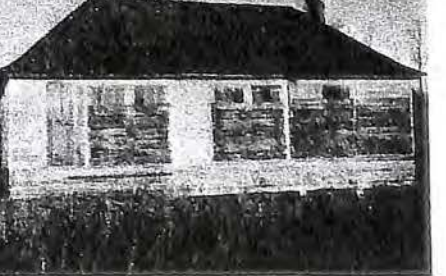
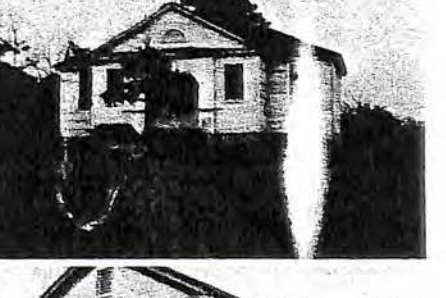
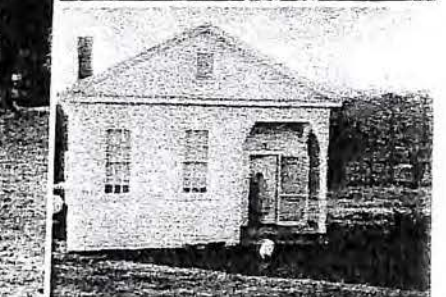
NOT SHOWN

OTTERVILLE

ROCKY MOUNT

MT. OLIVET

DEARSVILLE



HISTORY OF LIBERTY ACADEMY

The school now known as Liberty Academy was formerly Randolph-Macon Academy.

Randolph-Macon College for men was established in Boydton, Virginia, in 1839 as a Methodist-Episcopal School. However, it was moved to Ashland, Virginia, following the War Between the States. W. W. Smith, founder of the Randolph-Macon system, felt the need of feeder or preparatory schools for the College at Ashland. Due to the scarcity of public high schools in the state the boys at Ashland had to take preparatory work at the colleges.

In 1890, Dr. Smith chose Bedford as the location for a feeder school. This school was named Randolph-Macon Academy. Thirty acres of land were bought through donations and a school was built. The original building is what is now Liberty Academy. The bricks for the new building were made on the grounds and a lake was made when the land was excavated for the clay for the bricks. This lake was very popular with the skaters of Bedford in the winter. Also, the ice from the pond was stored in an ice house which was located just behind the main building.

Randolph-Macon Academy was opened in the fall of 1890. The original building had a capacity of one hundred and twenty five students. In 1915, the east wing which houses the present teachers' apartment was added to the main building. The west or gymnasium wing was burned in 1920 and was rebuilt during the next year. In addition, a swimming pool was built adjoining the gymnasium.

Dr. Smith decided on Front Royal, Virginia, as the site for the second feeder school. This school was built in 1892 by the same plan as was used in Bedford. Even the grounds were as much like the Bedford grounds as possible. It has been said that this school had one of the most beautiful locations of any school in the State of Virginia.

The auditorium of Liberty Academy was used as a study hall. Each student had his own desk and was required to be in study hall five nights a week—Monday through Friday. Classes were held on Saturday rather than on Monday.

The average enrollment at the academy was two hundred and twenty-five. The classes were small with only twelve to fifteen students to each class. This resulted in a close relationship between the teacher and the students.

The first co-principals were A. M. Hughlett and E. Sumpter Smith. Mr. Hughlett left in 1898 and Mr. Smith was the principal until 1918. From 1918-1922 E. Sumpter Smith and William R. Phelps served as co-principals. Col. Phelps became principal in 1922. He held this position until the Academy closed in 1933.

In 1933, due to the depression and to the fact that there were more public schools, Randolph-Macon Academy was forced to close. The school in Front Royal had burned and had been rebuilt so it was decided to use the one with the newer buildings; therefore, the Academy in Bedford was closed.

The Bedford County School Board purchased this unique and lovely Academy building and grounds in 1936 for \$33,000 for the purpose of using it as a public County School.

The building went down rapidly during the two-year period it was abandoned. Hundreds of window panes had to be put in and other repairs made in order to make it usable for a public elementary school. During the period it was abandoned hoboes from the railroad had found it a sheltering place from the cold.

A period of consolidation of the one and two-room schools of Central District started with the opening of Liberty Academy Elementary School in the fall of 1936. Approximately 18 small schools consolidated to form the present Liberty Academy Elementary School. (See picture of feeder schools).

One of the last smaller schools to close was "Woodland" which was on Route 43. This school closed after the death of Miss Louise Armbruster who had taught there for many years.

The Liberty Academy building has served as a central meeting place for County Teachers' Meetings, teacher workshops, banquets, extension courses, and group meetings. It also houses the Bureau of Teaching Materials Center, and Supervisors' Office.

From its very beginning as a public school the east wing of the third floor has been used as a teacherage. The majority of the teachers and student teachers who have taught at the Academy have been housed there. During World War II when the housing situation was critical, teachers from other schools in the County also lived there. The principals of the school and their families have always lived in the buildings. Several other

principals, supervisors, and custodians have also had apartments there.

Eight buses transport pupils to Liberty Academy School; four of the buses make two trips. The first bus loads arrive about eight o'clock in the morning and go back for second loads. The last of the second bus loads leave about four o'clock in the afternoon.



SCHOOL BUSES AT LIBERTY ACADEMY, 1952—
Loaded to take children home from school

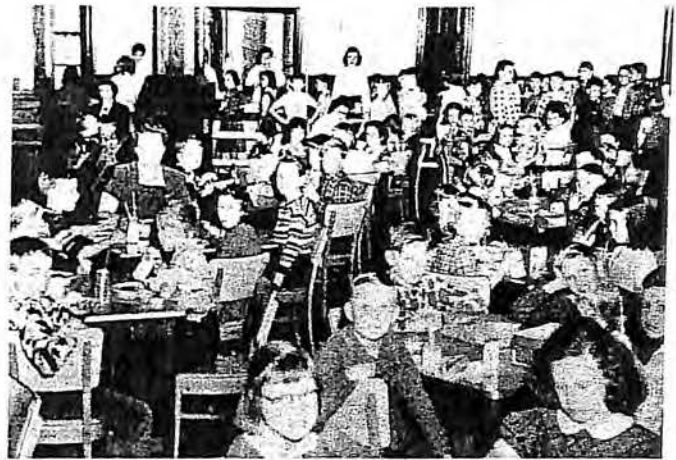
When the school was started, the lunchroom was opened in what is now known as the auditorium at Liberty Academy. The children sat in old style desks which were in one corner of the auditorium. The kitchen was in a small room nearby and served mainly soup. It has been moved to the present lunch room and has grown into a modern lunchroom with bright tables, chairs and drapes. It also has a modern kitchen and facilities for serving hot lunches. Approximately 335 lunches are served each day.

Mrs. A. L. Garrison is in charge of the School Library at this time. She has added hundreds of good books to the library. Each grade is served by the library in addition to room libraries of supplementary books. Mrs. Garrison keeps the latest and best materials in front of the pupils at all times.

Under the leadership of our present principal, Mr. A. L. Garrison, the building is noted for its cleanliness and beauty. The general organization and administration of the school is on an exceptionally high level.

The original enrollment at Liberty Academy was approximately 245. It has grown to an enrollment of 490 at the present time.

The original faculty of seven teachers has grown to eighteen at the present time, while the number of sections for each grade has grown from one to two and three.



A scene in THE LUNCH ROOM at Liberty Academy, 1952

The original teachers when the school was started 1936 were: Miss Norma Franklin, Miss Nell Boswe, Miss Linda Walker, Miss Bernice Sloop, Miss Mary Ali Glass, Miss Wilma Dickerson and Miss Ethel Stevens.

This was an alert, wide awake, energetic and interested group of teachers. They had a real challenge, with the occupation of such a spacious and lovely old building. Most of the classrooms had been freshly painted. The classrooms were quite modern for that period time, with small work rooms adjoining the main room, running water in each classroom, a wall socket for use of radio and victrolas, work benches, drawing easels and sand tables.

The alert faculty under the direction of Miss McKelly, Elementary Supervisor of the County Schools at that time, and Superintendent A. G. Cummings, set the type of work which was in keeping with the revised Virginia State Course of Study. The revised edition of the State Course of Study was published for use of teachers in the State of Virginia.



A LIBRARY scene at Liberty Academy, 1952. Mrs. A. L. Garrison Librarian

PRINCIPALS OF LIBERTY ACADEMY



MR. SAMUEL COFFEY



MR. O. T. BONNER



MRS. MADELINE DRISKILL

MISS VIRGINIA JOHNSON
(Deceased)

MR. NICHOLAS HURT



MR. GORDON STEWART



MRS. RUBY BASKERVILL



MR. A. L. GARRISON

This type of work had many merits which will be long remembered and respected. The pupils developed a sense of responsibility, self-discipline, courtesy, manners, use of talents and leadership ability.

The point of view for developing the Virginia Instructional Program was as follows: (Quote—State Course of Study)

"The American system of free public schools has been developed to assist in perpetuating, improving, and realizing democratic ideals. The school, therefore, must be democratic, not only in its instructional program, but also in its organization and method.

The effectiveness with which the desired attitudes will function depends upon the facility with which the pupil can use the specific habits, abilities, and knowledge involved in dealing with the life problem. It is important, therefore, that mastery of the abilities and knowledge essential to the solution of a problem should

be insisted upon. The learning experience which promises results in terms of modifications of behavior occurs in the problem-solving setting, in which abilities and knowledge find purposeful use, rather than in the memorization of isolated facts and the mastery of unrelated abilities." (Unquote)

This type of work continued for many years. Each class room was open for observation and hundreds of supervisors and teachers from all parts of the State came to the Academy to observe the work being done. It was also used as an observation center for the County Teachers.

A similar type of work continued with added features to the program, such as: Glee Clubs, Vested Choirs, Rhythm Bands, Art Rooms, Music Rooms, Elementary Home Economics, Woodwork Shop, Science Laboratory and Library. By adding these features, it was possible to give the child's special talent, interests and ability a continued opportunity to develop.

Talents were shown each spring when elaborate pageants were held on the lawn. The pageants were original and were written by the pupils and teachers. The themes were centered around classroom work and every child participated. The elaborate costumes were made by the parents, children and teachers. Musical instruments for the pageants were made by the music and art classes. Motion pictures were made of some of the pageants and are available for use today. This type curriculum gave the children a chance to develop personality, grace, dignity, as well as talent in music, art, speaking and dramatization.



EARLY FIRST GRADE CLASS—1938

Miss Norma Franklin, teacher; Girl left of table, Annie Marie Overstreet; Boy right of table, David Boinstein.

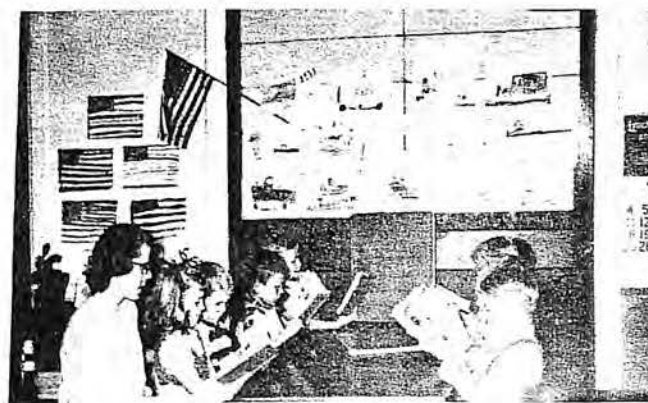
During World War II when materials of all types were scarce, the elaborate outdoor programs on the lawn were replaced by a more simplified indoor type of program. However, the programs are beautiful and most effective. May Day and Christmas programs in which nearly all pupils still participate are given in the auditorium or gymnasium. The crowning of the Health Day Queen and the recognition of pupils who have attained the five point standards are played up in the May Day programs of today. Health and Physical Education activities play a great part in the program each year.

In 1943, 1944, and 1945, the school worked in cooperation with Radford College. A number of Radford students spent from three months to a year at Liberty Academy as student teachers with the regular classroom teacher. This continued for a number of years. Many students returned the following year as regular classroom teachers. Some of the student teachers were:



MISS BURNS' CLAY MODELING CLASS—1952

Walter Hopkins, Charles Overstreet, Bert Nance, Johnny Bryant, Frances Parker, Judy Key, Jackie Faribault.



MISS BURNS' READING CLASS—1952

Raymond Woodward, Judy Key, Walter Hopkins, Leo Wilch, Frances Parker.

Miss Anna Kate Givens, Miss Virginia Johnson (deceased), Miss Grace Ellen Fink, Miss Carrie Mobley, Miss Almenta Waters, Miss Mae Stone, Miss Lois Poland, and others.



BOY'S CHORUS—1952

Left to right, front row: Frank Leftwich, Wayne Agee, Fred Robertson, Roy Padgett. Second row: J. E. Agee, Robert Rider, Ronald Obenchain, Lionel Toms, Vernon Craig. Back row: Kendall Wilkes, Warren Carwile, Billy Hopkins, Carl Overstreet, Bobbie Crouch and Phillip Arthur.

In addition to the regular classroom work the following teachers gave part time to the instruction of music and art: Miss Wilma Dickerson and Miss Mary Alice Glass, music and art; Miss Nell Boswell, music; Miss Frankie Bryant, music; and Miss Elizabeth Prilliman, art.

The above art teachers helped the pupils in developing many wall murals which were beautiful and rich in color.

In recent years Mrs. Paul Overstreet, Jr., has served as art teacher and Mrs. Evan Marshall as music teacher. Mrs. Evan Marshall has taught music to the pupils at the Academy as well as sharing her time with several other schools in the County for the past four years.

A fifth grade class room teacher, Miss Shirley Irving, discovered some unusual talent, a girls' trio. This trio has been very active in school music programs, as well as singing over WBLT, our local broadcasting station. Students from other grades are also active in participating in broadcasting programs.



ART

Mrs. Delia Morgan, Teacher

Lester Williams, Student

Billy Johnson, Student

This school, in 1939, as well as all others in the county, engaged in a five-year period of child study. Bedford County was invited to join the study by the Commission on Teacher Education of the American Council on Education. It was a co-operative study of the preparation of teachers and of their continuing education while in service.

The first year of the study, two of the Liberty Academy



LIBERTY ACADEMY TRIO

Janet DeWitt, Mary Frances Wilkerson, Patsy Ayers

teachers, Mrs. Madeline Driskill and Miss Mary Wright were selected to attend the summer workshops on Child Study and Development. Mrs. Madeline Driskill went to the University of Chicago and studied under Dr. Daniel Prescott, Dr. Tryon, Dr. Havighurst and others. Miss Mary Wright went to George Peabody College, Nashville, Tennessee, and studied under Dr. Karl W. Bigelow, Dr. Armstrong and others. She also attended the University of Chicago the second summer of the study.

As an outgrowth of the Child Study Program and the enriched program of work, each year special stress is put on understanding children and also of developing pupil talents and abilities. Each individual child is given an opportunity to develop his talents in music, art, science and other fields of work.

Each child is considered as an individual and is given the help he needs. Teachers see a need for special groupings as well as for individual work, and much work of a remedial nature is done by each class room teacher. Pupils are given an opportunity to progress at the rate of speed he is capable of attaining.

The enriched type of program as taught at Liberty Academy today gives a great deal of stress to mastering the 3 R's as well as developing the talents, interests, abilities and personalities of the pupils.

According to the state testing program given in 1950-51 every grade at Liberty Academy is up to, and in many cases, above national standard for achievement of the 3 R's as well as all other subjects.

FOREST SCHOOL 1887-1952

Around 1887 our first school was one room near the present route 460. A writing desk was improvised but most of the pupils sat on benches with their slates in their laps. A "wood burner" ate up fuel but gave little heat. About 1903, another room and small cloak-room were added by the district school board. While this work was being done, a small cottage on the present site was rented. Near the end of that term, the cottage burned. The pupils began the next term in the old building with additions and a much larger playground. For about ten years the patrons and district school board worked to enlarge the school to three rooms and add equipment, including heavy coal stoves. About 1915, all this work was wiped out in another fire. The rest of the term was continued in various buildings of the village. The following term, on the present site, a new plant was ready with three rooms that could be opened into an auditorium for the pupils and the community's use. This encouraged even closer cooperation between school and village. Much later the building was brick veneered; a kitchen and another room were added. In the thirties a furnace was installed. Repeated well drilling was fruitless but water is now piped in.

In 1950 the P.T.A. graded the large playground. Due to the foresight of the School Board there is enough acreage for several baseball games at once, or for the primary children to play safely away from the older ones. Former pupils remember games of Mumbledy Peg, Fox in the Walnut, Crack the Whip, even one year of tennis. On good days, they ate their lunch under the old maple that still shades us. But lunches have progressed from the piece of fat meat wrapped in newspaper or the cold sweet potato, through a period when the older girls prepared hot soup, to the present balanced lunch program. Benches were replaced by double desks with ink wells and they yielded to modern movable chair desks. The single book, a primer or a cherished classic from home, has been multiplied by standard textbooks, the rental system, and an 800 book library. The early terms of four or five months that put Forest pupils one or two years "behind" other schools



PRESENT DAY SCHOOL

were lengthened to nine after 1922. The patrons no longer give room and board to teachers as part of their salary, nor do they have to sell homemade ice cream by the roadside to make up the salary.

Pupils wishing more education had to ride to New London on horseback, or board in Lynchburg paying tuition. Both cost more money than many had. The patrons finally won not only more teachers but two years high school. Consolidation and buses diverted the high school pupils to N.L.A. and Forest reverted to seven grades.

This last change was due in part to the first hard surfaced roads. Parents were fearful the first day their children left in "those buses" to go "so far." But they realized bad weather had kept them from school many days. They remembered walking as far as five miles in the mud. They remembered waiting until they were eight or ten years old before they could start that walking. They remembered the disadvantages of the single teacher who could not go over all the work each day although they stayed until four o'clock. They were glad their children could go to high school.

The former pupils of Forest School have been interviewed by this year's sixth and seventh grades. They told about the struggles of the past with nostalgic affection. Yet they tell us they wish they could have had more education so they could have better jobs now and help their own children more. To better jobs and happier families . . . to better prepared and adjusted citizens . . . this school is determined to progress in the future as it has in the past.

64

I. GROWTH ACADEMICALLY

- (1) Seven grades under one teacher
- (2) Two teachers but put back 2 or 3 years if moved
- (3) Two years High school
- (4) Reduced to elementary again, three teachers
- (5) Low spot, two teachers in early 1940's
- (6) Three teachers in 1951

II. GROWTH IN BUILDINGS

- (1) One room
- (2) Two rooms
- (3) Fire
- (4) Rebuilt two rooms
- (5) Another fire
- (6) Three rooms
- (7) Kitchen and Primary room added
- (8) Brick encased

III. MONEY MAKING PROJECTS

- (1) To have a longer term
- (2) To pay the teachers
- (3) Unique methods

V. ROADS AND BUSES, THE BIG CHANGE

- (1) Mud roads
 - (a) walked as far as 4 miles
 - (b) had to be 7 years old but often waited until 10
 - (c) poor attendance
 - (d) little contact between teacher and parents
- (2) Good roads
 - (a) larger grades
 - (b) higher education possible
 - (c) parents had better income
 - (d) good attendance on bad days

RECESSES AND LUNCH TIME

- (1) Small playground with briars
 - (a) games played and exercises
 - (b) Board's foresight in large acreage
 - (c) PTA grades playground in 1950
- (2) Lunches under the old maple tree
 - (a) fat meat wrapped in newspaper

- (b) children prepared first hot lunches
- (c) today's lunch program

VI. THE SCHOOL DAY

- (1) Opening exercises
 - (a) visiting preachers
 - (b) Lord's Prayer
 - (c) none
 - (d) flag exercises
- (2) Equipment
 - (a) benches, boards, slates 65 years ago
 - (b) double desks with ink wells
 - (c) modern movable chair desks, maps, etc.
- (3) Books
 - (a) first primer
 - (b) classics
 - (c) rental system and library

VII. LIST OF FORMER TEACHERS AND PRESENT ONES

Teachers Prior to 1903 —

Miss Mary Goode, first teacher, 1883	Miss Helen Jones
Miss Sallie Lindsay	Miss Lizzie Duncan
Miss Jenny Fuqua	Miss Lucy Claytor

Teachers After 1903 —

Not Chronological

Mrs. Lucy Radford	Miss Beatrice Marshall
Miss Lucy Walker	Miss Aleas Mosely
Mr. Tate	Miss Mary Singleton
Miss Graves	Miss Linda Perkins
Miss Ruth Catlin	Miss Lelia Wood
Mr. Rider	Miss Ruth Fuqua
Miss Hattie Burnette	Miss Agnes Miller
Miss Gladys Wooldridge	Miss Esther Miller
Miss Vixella Rucker (Mrs. Lewis White)	(Mrs. J. S. McCauley)
Mrs. McGee	Miss Lillian Baldock
Mr. Chapman	Mrs. Morgan
Miss Taylor	Mrs. Lilly Leftwich
Miss Grace Steptoe, principal	Miss Royster
Miss Iva Forgie	Mrs. Ira Campbell
Miss Lovey Burnette	Miss Lois Turner
Miss Adriene Adams	Miss Tomlinson
Miss Eleanor Bower	Mrs. Eugene Wilson
Mrs. Jarnagan	Miss Helen Craddock, 13 years, principal
Mr. Postum, principal	Mrs. J. B. Thurman
Miss Mary Jackson	Mrs. Virginia O'Hair
Miss Margaret Burnette, 17 years, principal now Mrs. C. H. White	Mrs. Carl Flock
	Miss Jessie King
	Mrs. Whitney Grove
	Mrs. Kitty C. Radford

Hon. P. F. St. Clair
Dead

Hon. P. F. St Clair, who was truly the leading citizen of Giles county, died at his home at Bane last Monday night at 11 o'clock.

Peyton Ferdinand St. Clair was born in Roanoke, August 15, 1860, and lived there until he was about seventeen months old, when his father, Meadow St. Clair, moved to Pulaski County. They lived there until 1868, when the family moved to the present home in Giles county.

October 16, 1887, Mr. St. Clair married Laura May Cecil and there were five children born to this union:

D. M. St. Stair
W. C. St. Clair
Ardelia St. Clair
Ellen Elizabeth St. Clair
Nancy St. Clair now Mrs. Harris Hoge, Jr.

His father died September 5, 1889. His mother lived until February 16, 1907. His brother G. William St. Clair, of West Virginia, died November 4, 1906, his brother John St. Clair, died August 1906, and he left one brother Charles R. St. Clair, of Dublin, VA, yet living.

Peyton St. Clair was a man of almost perfect health until last August when he had his first serious attack in Craig County, Virginia but from this he soon rallied and he attended his entire extensive business until October. 1913.

He was a man of untiring energy, a kind and helpful neighbor at all times and was tender and loving to his family.

From his earliest manhood, he showed a fondness for active politics, but he never was a candidate for office until 1901, when he was nominated and elected as a Democrat from his district to the senate of Virginia. Going into the legislature untried in that period of transition from the old constitution to the new, his worth as a statesman was recognized and he was placed on some of the most important committees of the senate, where he soon showed his ability and was recognized as one of the strong men of that body. He was reelected in 1905, served two years and declined reelection.

He was about ten years chairman of the Ninth congressional district Democratic committee, but declined reelection at the Norfolk convention in 1912. He served six years on the board of visitors of Virginia Polytechnic Institute and was again appointed by Governor Stuart a few weeks ago.

66
No man in Southwest Virginia exerted a stronger influence in his district, his county or state than did Peyton St. Clair.

He owned a large and valuable farm in Giles County, and for years has dealt in cattle and sheep, shipping many car loads each session. He was president of The First National Bank of Pearisburg, was active in various business enterprises and almost invariably successful in what he undertook.

As a tribute to the memory of Peyton F. St. Clair, all stores in Pearisburg and the four banks in the county were closed when the funeral services were held Wednesday afternoon.

He was buried Wednesday afternoon at Pleasant Hill Methodist Church at Bane by the Masonic order of which he was an honored member. His funeral was conducted by his pastor, Rev. D. T. Miles, and was attended by an unusually large crowd of people.

Active pall bearers were:

Judge Martin Williams
R. S. Fry
Clay Mason
H. B. Shelton
Charles Johnston
G. W. Buchanan
F. D. Kelley
J. R. Johnston
T. A. J. Bratton
W. P. Eaton
F. F. Farrier
S. H. Bane

Honorary pall bearers:

C. L. King
W. H. Buchanan
A. E. Shumate
J. R. Goodwin
M. P. Farrier
J. T. S. Hoge
Bernard Mason
M. J. Miller
P. S. Miller
G. M. Roberts
G. W. Shumate
John G. Williams
John W. Williams

S. A. Mann
W. H. Wheelwright
B. F. Straley

The Roanoke Times of Tuesday said of him:

"By the death of Peyton F. St. Clair, Virginia has lost a strong, active, valuable man. The loss is felt with special force in this part of the State, where Mr. St. Clair's activities were most immediately known and felt, but it will be realized by all everywhere who are familiar without public men and affairs. He was a farmer and loved the soil and the work and science of using it, but his energies sought outlet and use in other directions. He was a high class businessman, shrewd, far sighted broad minded and filled with that prolific pulse known as pure spirit. He liked politics for the sake of the game and that he might serve his State, his community, his party and friends. One of the most controlling qualities of his nature was loyalty. The person or cause winning his good will and confidence won a friend who would not swerve nor falter. His promises were given from his heart and were given to be kept. Conservative in his hopes he spared nothing of his time, labor and means in the endeavor to do always more than he undertook. He was a man who could be trusted always. There was no selfish purpose in his work. His ambitions were to do good and faithful service. In the darkest and apparently the most hopeless days of his party in his section his busy brain never ceased from contriving plans for revitalizing it, he sanguine while others desponded, his courage never faltered and he was stirring and potent among the leaders, tireless, resourceful, filled with the joy and fire of battle.

He was a good and kindly neighbor, devoted, generous and tender with his family, a leading citizen because he really led and used his powerful influence to better the condition of the people and for the promotion of all progress in right directions. Few men in the State did more than he to promote the development of Virginia and start and urged the old Sate upon onward and upward course. In his personal relations with men he was bluff, straightforward, outspoken, honest and convincing. He was trusted because he deserved to be. He won friendships readily held them closely and when he gave friendship he gave it heartily and faithfully. He was honest, true, clean and brave. Not much better than that can be said for any man. For him it may be added that he used his strength and was useful because his instinct was to be so and he had the clear head to know how.

We have lost a good strong man who was real man. All we can do is to mourn him, to emulate his good work as we can and to keep his memory in high honor among the worthiest of Virginia's sons and the foremost of the human forces that have given her new life and hope and power."

Note: Mr. St. Clair died at 11 P. M., Monday, 7 August 1914

ORDER BOOK A - GREENBRIER COUNTY, (WEST) VIRGINIA

contributed by
Mrs K A (Margaret) Thompson

Note: Usually we do not publish material outside of the area shown on the front cover of VAN, but this is a list of citizens who performed services in the Revolutionary War. Many of the descendants went into our area of Virginia.

Wednesday the 19th day of June 1782

Present Samuel Brown, William Ward, Michael Woods, Archer Mathews and John Henderson: Gentlemen

On the motion of John Anderson Leave is granted him to keep an Ordinary in this County for one Year from this day, whereupon the said John Anderson with William Frogg his Security entered into and acknowledged Bond in the Penalty of Fifty Pounds conditioned as the Law directs.

ORDERED that Moses Hall be allowed for 169 lbs of Beef furnished for the use of this State.

Ordered that Archer Mathews be allowed five Pounds for one hundred Diets, also Six Pounds nine Shillings for one hundred and Twenty nine Pasturages and for twenty nine Bushels of Corn, furnished for the Use of the United States.

Ordered that William Frogg be allowed Thirty three pounds six shillings & eight Pence for one Horse, a Dark Bay six years old fourteen hands high, also Fifty Pounds for a Sorrel Horse thirteen hands three Inches high four years old, furnished for the Use of the United States.

Ordered that Anthoney Bowen be allowed for 27 lbs of Mutton & one bushel of Corn furnished for the Use of this State.

The same to Alexander Clark for 332 lbs Beeff for same.

The Same to Henry Hunter for 204 lbs Beef same.

The Same to James Henderson for 312 $\frac{1}{4}$ Pounds Beef the same.

The Same to Bond Estill for 387 $\frac{3}{4}$ lbs of Ditto. the same.

The Same to William Laugherty (Lafferty) for 154 lbs Ditto & 26 lbs Indian Meal the same.

p 43

Ordered that Robert Thompson be allowed for 15 lbs of Beef furnished for the use of this State.

Mathias Kisinger the Same for the Same.

Thomas Edgar the Same for 98 lbs Feef The Same.

The Same to Same four Pounds Ten Shillings for one Bushel of Salt furnished the Same.

Ordered that John Otan be allowed for 24 lbs Beef the Same.

William Johnston the same fifteen Shillings for 15 lbs Bacon the Same.

William Morris the Same Sixteen Pounds nineteen Shillings for 339 lbs. Bacon.

William Estil the same for 15 lbs Venison furnished for this State's Use.

John Raulster the same for 50 lbs Ditto - Ditto.

p 43 (con't)

James Caldwell the same for 182 lbs Ditto. the same.

Adam Caperton the Same for 85 lbs. Ditto. the same.

James Hamilton Ditto ... for 107 lbs. Ditto. the same.

Ordered that Charles Kavanah be allowed for 48 lbs Venison. The same.

Ditto Peter Davis for 156 lbs. Dittothe same.

Ditto John Anderson for 25 lbs flour.....the same.

Ditto Andrew Donnally Sixty Pounds for one Gray Horse fourteen handsHigh four years old furnished for the use of this State.

Ditto James Henderson five shillings & six Pence for one Mare & two Horses employed one day in the Service of this State.

The Same as next above is allowed to William Estill for the same.

Ordered that William Laverty be allowed Thirteen shillings & six pence for the Service of one Horse employed nine Days for this State.

Ditto Conrod Yoakam five Shillings & six Pence for one Mare and Two Horses employed one day in the Service of this State.

Ditto Jacob Miller Eleven Shillings for one mare & Two Horses employed two Days in the Service of this State.

Ditto Michael Kelly four Shillings for one mare & Horse employed one day in the Service of this State.

Ditto Andrew Donally Thirteen shillings and Six Pence for one Horse employed nine Days in the Service of this State.

Ditto David Hanna Eight shillings for one mare & Horse Two days employed in the Service of this State.

Ditto John Oten five shillings for one mare employed Two days in the Service of this State.

Ditto Uslesten Petejon Six Shillings for driving Cattle belonging to this State.

Ditto Robert Thompson Seven shillings & four pence for the same

Ditto William Morris Twenty shillings for the Service of a Horse employed for this State.

Ditto Leonard Cooper The Same.

page 44

Ordered that Conrod Yokeham be allowed Sixteen shillings and eight pence for a Horse employed in the Service of this State.

Ditto James Henderson One Pound Twelve shillings for carrying Flour for the Use of this State.

Ordered that Thomas Ellis be allowed nine Pounds four shillings for 184 Rations furnished for this State.

Ditto James Huggard The same as next above.

Ditto James Huggard junior The same as next above.

Ditto William Huggard The same as next above.

Ditto Andrew McFerran The same as next above.

Ditto Samuel McGarra The same as next above.

70
p 44 (con't)

Ditto John Peper Eight Pounds seven shillings for 167 Rations furnished for the Use of this State.

Ditto Michael Rhoney Eight Pounds fifteen shillings for furnishing a mare to drive Pack Horse Seventy Days, also Fourteen Pounds for furnishing a mare to drive cattle Seventy Days, for this State.

Ditto Archibald Woods Thirty five Pounds Two shillings for 702 Rations furnished on account of this State.

Ditto Thomas Shelton Twenty Seven Pounds eight shillings for 468 Rations Ditto

Ditto Adam Woods Three Pounds fourteen shillings for 74 Ditto....Ditto

Ditto Andrew Woods Seven Pounds eight shillings for 148 Ditto.....Ditto

Ditto Hugh Caperton Three Pound fourteen Shillings for 74 Ditto ... Ditto

Ditto Peter Woods the same as next above.

Ditto Samuel Hutchison the same as next above.

Ditto Andrew Wilson Three Pounds Two Shillings for 62 Rations furnished on Account of this State.

Ditto James Wilson Three Pounds fourteen shillings for 74 Ditto for Ditto.

Ditto Jacob Miller Three Pounds Two Shillings for 62.. Ditto ... Ditto.

Ditto Charles Miller Three Pounds fourteen shillings for 74 Ditto.. Ditto

Ditto John Jamerson the same as next above.

Ditto Francis Catly the same as next above.

Ditto Charles Cavender The same as next above.

Ditto James Williams Eleven Pounds Eleven shillings for 231 Rations furnished on account of this State.

Ditto Thomas Williams Eleven Pounds fourteen Shillings for 234 Ditto for Ditto

Ditto Joseph Williams the same as next above.

Ditto Nicholas Woodsin Eleven Pounds Two Shillings for 222 Rations furnished for this State.

Ditto Thomas Woodsin Eleven Pounds fourteen shillings for 234 Ditto.. Ditto

Ditto George Parks The same as next above.

Ditto Alexander Reid Three Pounds Two shillings for 62 Rations furnished for this State.

Ditto Samuel Pack Eleven Pounds fourteen Shillings for 234 Rations. the same

Ditto George Pack the same as next above.

p 45

Ordered that John Farler be allowed Six Pounds fourteen shillings for 134 Rations furnished for this State.

Ditto William Lacey Eleven Pounds fourteen shillings for 234 Ditto.. Ditto

Ditto William Lacey Junior the same as next above.

Ditto Mark Lacey Eight Pounds Two shillings for 182 Rations for this State.

Ditto James Lacey Six Pounds fourteen shillings for 134 Ditto.. Ditto..

p 45 con't

Ditto William Laferty Eleven Pounds fourteen shillings for 234 Ditto. Ditto.
Ditto David Frazer The same as next above.
Ditto Martin Frazer The same as next above.
Ditto James Frazer The same as next above.
Ditto William Meek The same as next above.
Ditto Francis Farler five Pounds nineteen shillings for 119 Rations furnished for this State.
Ditto James Meeke Three Pounds Fourteen shillings for 74 Ditto.. Ditto.
Ditto John Frazer The same as next above.
Ditto James Fitzpatrick the same as next above.
Ditto John Fitzpatrick the same as next above.
Ditto James Allison the same as next above.
Ditto Rodger Kilpatrick the same as next above.
Ditto John Nicholas the same as next above.
Ditto John Thompson Two Pounds five shillings for 45 Rations furnished for this State.
Ditto William Hamilton Twenty nine Pounds Two shillings for 582 Ditto Ditto
Ditto Samuel McClung Seven Pounds eight shillings for 148.....Ditto..Ditto
Ditto James Jarrett the same as next above.
Ditto Leonard Cooper Three Pounds one shilling for 61 Rations furnished for this State.
Ditto Charles McClung Three Pounds fourteen shillings for 74 Ditto Ditto.
Ditto Peter Shoemaker The same as next above.
Ditto Wilson Lewis The same.
Ditto Thomas Carroway The Same.
Ditto William Scott The Same.
Ditto George Sea The Same.
Ditto Michael Sea The Same.
Ditto Jesse Jerrell The Same.
Ditto John Shoemaker The Same.

p 50

Ordered that William Caldwell be allowed for 112 lbs Venison furnished for the Use of this State.
Ordered that there be allowance made to William Estill for 120 lbs Ditto...Ditto
Ditto.....Rich'd Humphreys for 43 lbs Bacon.....Ditto
Ditto.....John Estill Five Pounds Two Shillings for 550 lbs Pork...Ditto
Ditto.....James Graham for 7 Bushels Corn & 193 lbs Beef
Ditto.....The Same for mare & Horse employed in the Service of this State, Eight Shillings.

Ordered that there be allowed to William Meeke Seven Shillings & six pence for one Horse employed in the Service of this State five Days.

Ditto.....to Thomas McMurry Nine Pounds for two Bushels of Salt furnished for the Use of this State.

Ditto.....to James Williams one shilling & six Pence for the Service of one Horse one Day.

Ditto William Shanks Seven Pounds Twelve Shillings for 152 lbs Bacon for the Use of this State.

Ditto Volentine Cook one Shilling & six Pence for Corn & Hay for the State's Use

Ditto Archibald Woods four Pounds for one Beef & Three shillings for half a Bushel of Corn & Fodder, furnished for the Use of this State.

Ditto William Laferty nine shillings for Corn, fodder & Beef for State use.

Ditto John Fitzpatrick nine shillings & six pence for Pork & Horse hire for Ditto

Ditto Rodger Kilpatrick fourteen shillings for Sundry State Services.

Ditto John Farler for serving as Scout fifteen days & finding his Rations..Ditto

Ditto Andrew Woods Thirty shillings for five Pounds of Powder.....Ditto

Ditto Thomas Shilton Two Pounds twelve shillings & six Pence for the Hire of a Horse employed in the Service of this State 35 Days.

Ditto Moses Hickenbottom Seven Pounds Twn shillings for 150 lbs. Bacon furnished for the Use of this State.

Ditto Mark Lasey Fifteen shillings for 5 lbs Load (or lead) for the Use of this State.

Ditto Alexander Reid Six shillings for Venison for Ditto.

Ditto Archibald Woods Two Pounds Twelve Shillings & six Pence for the Hire of a Horse 35 Days employed in the Service of this State.

Ditto Mark Lasey for serving as a Scout in this State 5 Days.

Ditto John Anderson four Pounds Twn shillings for one Beef furnished for the Use of this State.

Ditto John Farler for serving as a Scout in this State 12 Days.

Ditto Robert Alford Seven Pounds Seventeen Shillings & six Pence for 1 3/4 Bushels of Salt furnished for the Use of this State.

Ditto John Miller fifteen shillings & five Pence for 77 lbs Pork furnished for the Use of this State.

Ditto Alexander Reid for serving as a Scout in this State 18 Days.

Ditto Nicholas Woodfin the same as next above

p 51

Ordered that there be allowed to Joseph Ellison for serving as a Scott in this State Eighteen Days.

Ordered that an allowance be made to William Meeke for 45 Diets for State.

Ditto..... to William Laferty for the same.

Ditto.....to Thomas Nicholas for 13 Diets for State.

Ditto.....to James Ellison for serving as a Scout in this State 7 Days.

p 51 con't

Ditto.....to Thomas Farler Two Pounds five shillings for 45 lbs Bacon furnished for the Use of this State.

Ditto.....to William Laferty & James Williams Thirty Two shillings for Horse hire & the service of two men four days each for this State.

Ordered that an allowance be made to Joseph Ellison for serving as a Scout in this State Seven Days.

Ditto..... to William Laferty fourteen shillings & six Pence for Rations & Meal furnished for the Use of this State.

Ditto..... to Andrew Woods Eighteen shillings for three pounds Gun Powder for the Use of this State.

Ditto..... to Susanah Woods for thirty five Diets furnished for the Use of this State.

Ditto..... to the Same for Diets & Horse hire three Pounds Two shillings

Ditto William Estile Forty shillings for Diets & Fodder for this State.

Ditto Thomas Wright Two Pounds Twn shillings for 50 lbs Bacon furnished for the Use of this State.

Ditto Peter Woods Three Pounds for Corn & fodder 30 Nights furnished a Horse belonging to this State.

Ditto John Henderson Thirteen Shillings & four Pence for feeding an Horse belonging to this State.

Ordered that this Court be adjourned till Court in Course.

The minutes of these Proceedings were signed

Sam^l Brown

Queries

Seek information on Edward SMITH and wife, Mildred or Millard BIRD SMITH of Grayson Co, Va. He was an Irish Conscript in British Army during Revolutionary War; deserted; became a patriot; moved to Pulaski Co, Ky. Died ca 1823 in Hamilton Co, Ohio. Will share. Marilyn Dickerson, 740 N Wagner Rd, Ann Arbor, Mi 48103.

Wish to correspond with anyone interested in Griffith DICKERSONS, especially Griffith DICKERSON of Montgomery Co, Virginia, born ca 1780; married Rebecca THOMPSON in 1800. Was Elijah DICKERSON father of Griffith? Was James THOMPSON father of Rebecca. This family moved to Indiana ca 1825. Will share. Marilyn Dickerson, 740 N Wagner Rd, Ann Arbor, Mi 48103

Seeking parents, birthplace of James WILLIAMSON and wife, Telita BAXTER. They were born in Kentucky, lived in Decatur Co, Indiana, died mid 1800s. Their daughter, Frances Jane married Vinson E. SMITH in 1847. They lived in Putnam and Boone Counties, Indiana He died in 1909. She died in 1912. Will share. Marilyn Dickerson, 740 N Wagner Rd, Ann Arbor, Mi 48103.

Would like to know more about John P SMITH, Vinson's father. He was born in Chesapeake Bay area, the son of a Revolutionary War soldier. He married Sarah ASKEW of Maryland ca 1799. They emigrated to Ohio in 1818; settled 1820 in Fayette Co, Indiana. He died in 1844. Will share. Marilyn Dickerson, 740 N. Wagner Rd. Ann Arbor Mi 48103

GARLAND – TUTWILER BIBLE

Contributed by
Mrs. Douglas Boynton

From the Bible of Margaret A. Garland who married Eli Shores Tutwiler in February 1849,
Lexington, Virginia.

p. 1 Names of Birds
 M. G. Tutwiler Norwood, VA.

p. 2 MARRIAGES

John Belfield Garland and Maria R. McClelland were Married December 23rd 1842 at the
residence of Mr. John McClelland in the town of Lexington, Rockbridge County, Virginia.
E. S. Tutwiler and Margaret Annette Garland, daughter of John B. Garland, were married on the
day of February 1849.
John McClelland Tutwiler and Julia Rust were married in Luray, Page Co. VA. On the 31st day
of March 1874.

(note: the last two entries in the same handwriting)

p. 3 BIRTHS

John Belfield Garland Son of Peter R and Winefred B. Garland was born at Woodberry
Richmond County Virginia June 1st 1803.
(a poem has been omitted)

p. 4
John McClelland Tutwiler was born in Lexington Va Jany. 6th 1850

p. 5 DEATHS

John McC Garland Son of J B Garland and Mariah R. is Wife Died at Fort Sill Indian Territory
on the 6th of October 1869 – he was the Second Son of the same name.
Maria R. Garland the Idolized Wife of John B. Garland, Died at Woodberry in Richmond
County, Virginia; on the 15th day of May 1831 in the 26th Year of her age.... Her earthly remains
are Buried in the burying Ground of the Beflied family at Belfe (?) Mount in Richmond County
Virginia by the side of her first son.....It is my wish to be placed by her side When I leave
the form.... I am a Mason and Oddfellow... Will some Brother or friend See to itand
Receive My Gratitude

J. B. Garland died in Fredricksburg at the house of Capt. R. H. Alexander at 1.30 a.m. – the
morning of the 24th of April 1877 & was buried in the cemetery at the same city.

John McC. Tutwiler died May 19th at Lexington Va. 1884 (day & yr filled in by someone else.)
(all entries were made by different people)

Names of Birds

ingilla haddonia - Snow-bird
prochilus colubris - Humming-bird
Sonotricha oregonensis - Rice - Rice-bird - Bobolink
Protonotaria - Baltimore - Bird - Golden Robin or Lang-bird
Cardinalis - Cardinals - Cat-Bird - Thrush species -
Cyanocitta - Blue-bird
Turdus P. fuscus - Brown Thrasher -
Turdus migratorius - Robin - Thrush family

Native

From Bible of Margaret
 A. Garland who married
 Eli Shores Tutwiler in
 February 1849, Lexington,
 Virginia

Copies of family record
 pages made by Meta
 Tutwiler Hill Baynton
 (Mrs. D. R. Baynton)
 Roanoke, VA.

PAGE 4

ONLY ONE ENTRY

FAMILY RI

BIRTHS

John M. Clelland
 Tutwiler was born
 in Lexington Va
 Jan'y. 6th 1850.

FAMILY RECORD.

BIRTHS.

E

John Belkfield Garland
Son of Peter R. and
Winifred B Garland
was born at Wood-
berry, Richmond
County Virginia
June 1st 1803

Oh Take this poor old
And place it near the halcyon days;
Where I felt the sacred altar's glow,
Who loved me, and who loved me so.
This old ash's earthy wreath,
My long life's memory to me,
The pleasure of "I am with me" Amos,
For which an oak of charity,
And it allowed, no longer year,
To visit those dear friends again.
It came so late to the fair-
And calm their sorrow, grief, and pain.

FAMILY RECORD.

MARRIAGES.

John Belkfield Garland
and Maria R. M. Clelland
were married December
23rd 1824 - at the residence
of Mr. John M. Clelland in
the town of Lexington,
Rockbridge County
Virginia

E. S. Tutwiler and Mar-
garet Annette Garland,
daughter of John B.
Garland, were mar-
ried on the day of
February 1849.

John McQuinn and Julia
Rust were married
in Luray Page Co Va
on the 31st day of
March 1874.

...of Dr. Garland, the wife of Dr. Garland, died suddenly while sitting in her chair at her room on Main street, on the evening of the 1st of April, 1877, at the age of 60 years. She was a native of Virginia, and was married to Dr. Garland, about 18 years ago. She was a devoted wife and mother, and was well known in the community. She was a member of the Methodist Episcopal Church, and was a very active worker in the church. She was a very kind and generous person, and was always ready to help those in need. She was a very devoted wife and mother, and was well known in the community. She was a member of the Methodist Episcopal Church, and was a very active worker in the church. She was a very kind and generous person, and was always ready to help those in need.

DEATHS.	DEATHS.
<p>John M. Garland Son of J. B. Garland Died at Woodberry in Richmond County Va. on the 15th day of May 1833 in the 26th year of her age and her earthly remains are buried in the burying ground at the Bedford family at Bedford Mount in Richmond County Virg- inia, by the side of her first son. It is my wish to be placed by her side when I leave the form. I am a Mason and Odd fellow will some Brothers or friend see to this and receive my gratitude</p> <p>J. B. Garland died in Frederickburg at the house of Capt. R. H. Alexander, at 1.30 am the morning of the 24th of April 1877. He was buried in the cemetery at the same city.</p> <p>John M. C. Tutwiler died May 19th at Lexington Va 1884</p>	<p>Maria R. Garland The Idolized Wife of John B. Garland Died at Woodberry in Richmond County Va. on the 15th day of May 1833 in the 26th year of her age and her earthly remains are buried in the burying ground at the Bedford family at Bedford Mount in Richmond County Virg- inia, by the side of her first son. It is my wish to be placed by her side when I leave the form. I am a Mason and Odd fellow will some Brothers or friend see to this and receive my gratitude</p> <p>J. B. Garland died in Frederickburg at the house of Capt. R. H. Alexander, at 1.30 am the morning of the 24th of April 1877. He was buried in the cemetery at the same city.</p> <p>John M. C. Tutwiler died May 19th at Lexington Va 1884</p>

Newspaper Obituary

Sudden Death of Dr. J. B. Garland

Dr. J. B. Garland, the well known dentist, died suddenly while sitting in his chair at his home on Main Street, while conversing with Capt. R. H. Alexander, about 1 o'clock a. m. yesterday. The Doctor had been complaining during the day of an asthmatic affection and pain in the chest, and Capt. Alexander was sitting up with him, showing his neighborly attention and endeavoring to relieve his sufferings. He had been on the street conversing with friends as late as 9:30 p. m. Monday night. Dr. Garland was a native of Richmond County, and was in the 74th year of his age. He was related to the Garlands and Lyells of that county. He was an accomplished dentist and a cultivated man. His eccentricities of opinion prevented in many cases that intimacy of association for which he was well fitted, but his pure and upright life, gentlemanly demeanor and kindness of heart made him respected by all.

Dr. Garland is the last survivor of the small band who voted against the ordinance of secession in 1861. He was a most determined and determined and intrepid man, always ready, with an intelligent reason for his own opinions, and at the same time, never disposed to urge them offensively before others.

BOOK REVIEW

VIRGINIA GENEALOGICAL RESEARCH BY George K. Schweitzer, PhD, ScD. 223 pages, soft- cover, Word Processing by Anne M. Smalley.

This is a 'where to find it' source, not a 'how to'. The Table of Contents provides the guidance needed to utilize the information to be found. Dr. Schweitzer begins with *Virginia Background*.

Chapter 2 speaks of *Types of Records*, Chapter 3 - *Record Locations*, and Chapter 4 takes us through *Research procedure & County Listings*. Two illustrations locate rivers and counties.

A brief look at Court Records directed attention to a resource at the Library of Virginia web site. The reader is guided through 7 steps to *Search* and on line viewing of a court record. That attention to detail will be appreciated by the novice.

You may wish your own copy to keep at hand. It is available for \$15.00, postpaid, from
George K. Schweitzer,
Genealogical Sources, Unltd.
407 Ascot Court
Knoxville, TN 37923-5807

A copy has been placed in the Virginia Room.

Gene Swartzell

VIRGINIA ROOM
ROANOKE PUBLIC LIBRARIES
 706 S. Jefferson St. Roanoke, VA 24016
laura.wickstead@roanokeva.gov (540) 853-2073
www.rvl.info

Monday, Tuesday, Thursday 9am-9pm
Wednesday 10am-6pm, Friday 9am-6pm, Saturday 9am-5pm
 (We close for some national holidays.)

The Virginia Room comprehensively collects research materials for the Commonwealth of Virginia and the Roanoke Valley. This includes historical and genealogical materials relating to the entire state and, to a lesser degree, those states which are closely tied to Virginia and its people, by birth, immigration, migration, or by boundary divisions.

GENEALOGICAL RESEARCH

Surnames

- Family Histories.
- Biography files.
- Cemetery Records.

Virginia Vital Records

- Vital Statistics and Court records by County.
- Bureau of Vital Statistics (coverage varies by county).
 Births 1853-1896, Marriages 1853-1935, Deaths, 1853-1896.
 No state statistics were recorded pre-1853 or 1896 - June 1912.

Directories

- Roanoke City, 1889-present, few gaps.
- Virginia Business, 1871, 1884, 1893, 1897, 1917.

Passenger Lists

Church Histories

Military History

- Revolutionary War, 1812.
 Pension and land grant abstracts and records.
- Civil War.
 Regimental Histories.
 War of the Rebellion: Official Records.
 Index to Compiled Service Records.
- World War II, Roanoke Valley WWII Veterans. 3 Volumes, Index

Census Records

- Virginia—Every extant census and soundex. Print indexes.
- Various censuses (primarily antebellum) for 24 states and the District of Columbia. Some print indexes.

Ancestry Plus (family history online database). Available on site.

CD ROM (family history research databases). Available on site.

Newspapers - on microfilm.

- Virginia Gazette, 1736-1780.
- Big Lick and Roanoke (Various papers), 1877-1912.
- Roanoke Times, World News, 1889-present.
- Roanoke Tribune, 1999-present (boxed).
- Herald of the Valley, Fincastle, 1820-1823.
- Floyd Press, 1944-1990.
- Lynchburg (various papers), 1814-1885.
- Salem Times Register, 1866 -1868, 1909, 1934-present (gaps).

Obituary Indexes for Roanoke Times and Roanoke World News.

- April 1923-June 1950 (Subject indexing also).
- January-June 1988, 1989.
- 1990-present, www.roanoke.com/archives/

HISTORICAL RESEARCH and SPECIAL COLLECTIONS

- Virginia state histories.
- County, regional and subject histories.
- Swem's *Virginia Historical Index* and associated periodicals.
- Virginia history related journals and newsletters.
- Vertical File - by subject.
- Pamphlet file - by subject.
- Manuscript collections - primarily genealogical.
- Photographs- early Roanoke and aerial images.
- Maps- historic and modern county, USGS topographical.
- Sanborn Insurance Maps, 1889-1932 (years vary by city).
Roanoke, Salem, Rocky Mount, St. Paul.
- School Yearbooks, various institutions and years.

VIRGINIA Y. LEE AFRICAN AMERICAN COLLECTION

- This collection is at the Gainsboro Branch Library. These are extensive holdings in fiction and non-fiction, by and about African Americans. It includes many historical works. Titles can be found in the online catalog at www.rvl.info. Contact the library at 15 Patton Ave NW, Roanoke, 24016; 540-853-2540.

SERVICES

- We gladly respond to research queries by mail or email. Please ask a specific question. We are unable to respond to a request such as "Looking for any information about Matthew Miller." There is a minimum \$1.00 fee for copies. We will invoice. Call or email for more information.
- Photocopies, \$.10. Microfilm Reader/Printers, \$.25 per copy.
- Interlibrary Loan service for books and microfilm. There is no fee.
- U. S. Census microfilm rental program, \$4.50 per reel.

**CHURCHWOOD SCHOOL
BELSPRING, VA
1904-1905**

Presented By
Annie Lee Lucas

TEACHERS

Laura Belle Clarke
Annie Lee Lucas
Annette Morgan

B. S. Principal
B. S. First Assistant
Second Assistant

SCHOOL OFFICERS

D. M. Cloyd
C. S. Kirkwood
J. W. Munsey
D. S. Pollock

Chairman
Clerk
Treasurer
Superintendent

PUPILS

PRIMARY GRADE

Clayte Brown
Erwin Brown
Jimmie Burnett
Bettie Burton
Calvin Calhoun
Margarite Cecil
Mae Carden
Luther Crawford
Glenn Caldwell
Huston Caldwell
George Dixon
Ruby Elswick
John Ferrell
Anna Gibson
Ellis Giles
Paul Harris
Febie Hundley

Charlie Hypes
Martin Howell
Lozie Kimbleton
Crocket Linkous
Karl Locus
James Miller
John Miller
Mary Miller
Harry Richards
Clarence Snider
Everett Snider
Luther Stump
Jessie White
Zelma White

PUPIL
HIGH GRADE

Elizabeth Brown
Emmett Brown
Guy Brown
Lucy Brown
Percy Brown
George Bruce
Carrie Burton
Ethel Burton
Fred Burton
Elizabeth Cecil
Mabel Dulaney
Mae Elswick
William Elswick
Lee Ferrell
Lonnie Ferrell

Ilene Harris
Carl Hundley
Iva Hundley
Alma Kirkwood
Charles Kirkwood
Lawrence Kirkwood
Charles Long
Tilford Morgan
William Stump
Ida Sublett
Samuel Sublett
Charles Sutton
Margaret Sutton
Lake Yingling

PUPILS
INTERMEDIATE GRADE

James Andrews
Fore Arne
Myrtle Bane
Jeter Burnett
Annie Burton
Marx Burton
Perry Burton
Elsie Cecil
Annie Crawford
Lena Crawford
Lizzie Croy
Effie Ferrell
Atlas Giles
Flora Giles
Laurie Gibson
Julian Gibson
Bain Hicks
Karen Hundley
Allen Hundley
Maude Hypes
Roxie Hypes

Eddie Harkrader
Walter Kimbleton
William Linkous
Emma Long
Mary Richerson
Minnie Richerson
Annie Snider
James Snider
Lizzie Snider
Dee Vance
Rachel Vance
Charlie White
Verta Yingling

CHURCHWOOD SCHOOL BELSPRING, VA. 1904-1905

PUPILS

Intermediate Grade

James Andrews	Fore Arne
Perry Burton	
Marx Burton	Annie Burton
Lena Crawford	
Lizzie Croy	Elsie Cecil
Effie Ferrell	
Atlas Giles	Flora Giles
Julian Gibson	
Laurie Gibson	Roxie Hypes
Maud Hypes	
Bain Hicks	Karey Hundley
Allen Hundley	
Eddie Harkrader	Walter Kimbleton
William Linkous	
Emma Long	Minnie Richerson
Mary Richerson	
Maud Stump	James Snider
Annie Snider	
Lizzie Snider	Dee Vance
Rachel Vance	
Charlie White	Verta Yingling
Myrtle Bane	
Jeter Burnett	Annie Crawford

PUPILS

Primary Grade.

Erwin Brown	Clatye Brown
Jimmie Burnett	
Bettie Burton	Calvin Calhoun
Marganite Cecil	
Mae Carden	Luther Crawford
Glenn Caldwell	
Huston Caldwell	George Dixon
Ruby Elswick	
John Ferrell	Ellis Giles
Anna Gibson	
Paul Harris	Febie Hundley
Charlie Hypes	
Martin Howell	David Howell
Lozie Kimbleton	
Karl Locus	Crocket Linkous
Mary Miller	
James Miller	John Miller
Harry Richards	
Luther Stump	Everett Snider
Clarence Snider	
Jessie White	Zelma White

F. A. OWEN PUB. CO., DANVILLE, N. Y.

CHURCHWOOD SCHOOL Belspring - - Virginia

1904 - 1905



Presented By
Annie Lee Lucas
Teacher



TEACHERS

Laura Belle Clarke,	B. S. Principal
Annie Lee Lucas,	B. S. First Assistant
Annette Morgan,	Second Assistant

SCHOOL OFFICERS

D. M. Cloyd	Chairman
C. S. Kirkwood	Clerk
J. W. Munsey	Treasurer
D. S. Pollock	Superintendent

PUPILS

High Grade.

Guy Brown	Percy Brown
Emmett Brown	
Elizabeth Brown	Lucy Brown
Robert Brown	
Ethel Burton	Fred Burton
Carnie Burton	
George Bruce	Elizabeth Cecil
Mabel Dulaney	
William Elswick	Mae Elswick
Lonnie Ferrell	
Lee Ferrell	Irene Harris
Iva Hundley	
Carl Hundley	Alma Kirkwood
Lawrence Kirkwood	
Charles Kirkwood	Charles Long
Tilford Morgan	
Ida Sublett	Samuel Sublett
William Stump	
Margaret Sutton	Charles Sutton
Lake Yingling	

Botetourt County, Virginia Death Records- continued

CRAFT, Charles E - b 4 Oct 1856 Bot Co - 4 Jan 1857 - f William CRAFT - m Leona - cd (infant) - rep by father

CRAFT, Elizabeth - b ca 1781 Va (census #1227) - d by 12 Aug 1850 - w/o David CRAFT - Admr John THOMPSON

CRAFT, Jacob M - b 1837 -d 1904 - St Jacobs Lutheran Cem

CRAFT, Jonathan - b ca 1797 Va (census #1012) - d by 11 July 1853 - h/o Barbara - Adm John SHAFER

CRAFT, Mary Ann - b 17 Mar 1780 - d 30 Jan 1856 - age 75y 10m 13d - Ref Lemontown gravestone

CRAFT, Melvin Hazel - b 17 Sep 1912 Bot Co - d 4 Aug 1913 - f D[avid] G CRAFT (b Bot Co) - m Lula B (YOUNG) (b Bot Co) - buried St Jacob's Cem - cd Acute milk infection

CRAFT, William (md) - b Va - d Jan 1850 - age 40 - cd pneumonia - Ref: 1850 Bot Co Mortality Schedule - adm William M LACKLAND (9 Sep 1850)

CRAIG see Ellen ANDERSON

CRAIG, Liza - d by 12 May 1829 (son called an orphan) -son Andrew Lewis

CRAWFORD see Lucy ANGLE, Martha COLLINS, Erosa Francie HUFFMAN, E M PIFFER, James MASON, Thomas TOSH, James ALEXANDER, Hattie May CAMPBELL, Alto May CLARK, Ida Lee HOLDREN, Virginia F[or T] HORNE, male LEMON, Jacob M LEMON, William Edward LEMON, male LOVING, Seaton Alexander LOVING

CRAWFORD, Andrew - d by 8 Feb 1791 Bot Co - f [John CRAWFORD] -Ref WB A p294 will dated 10 Jan 1791, Admr bond, WB A p449 division - Relatives: wife Ulfee; Ch: John, James, Eunice, Pheba; Margaret (md VINZANT); bro: William - Admr: William CRAWFORD, Edward MITCHELL - [On 12 Apr 1797, son James was under 14, On 14 June 1797 dau Phebe was over 14]

CRAWFORD, Andrew K - b [ca 1799] - d 1866 Bot Co -f [William CRAWFORD] - m [Margaret KILPATRICK] - Adm 12 Nov 1866 James M McCOY

CRAWFORD, D[avid] J - b 15 Sep 1829 - d 8 Jan 1904 Bot Co - f [Samuel CRAWFORD] - m [Jane AUSTIN] - h/o Melvina CRAWFORD (1835-1910) - Ref Lemontown gravestone

CRAWFORD, Fletcher J - b ca 1840 Va (census #1221) -d by 10 Feb 1862 Bot Co - f Joseph CRAWFORD - m Elizabeth [CRIST] - Adm Thornton L CRAWFORD

CRAWFORD, Grace - 26 Mar 1913 Bot Co - d 26 Mar 1913 Bot Co - f Lee CRAWFORD (b Bot Co) - m Mary B (FORD) (b Bot Co) -buried Forest Chapel Cem -cd still born

CRAWFORD, Ida May - b 5 Mar 1913 Va - d 7 Dec 1914 Bot Co - f Oscar J CRAWFORD (b Va) - m Emma A (COFFMAN) (b Va) - buried Haymakertown Cem - cd pneumonia

CRAWFORD, James - b 18 Oct 1912 Bot Co - d 18 Oct 1912 Bot Co - f Robert Alonza CRAWFORD (b Bot Co) - m Bertha (CLARKE) (b Bot Co) - buried Buchanan-cd still born

CRAWFORD, Jane - b ca 1803 Bot Co - d 23 July 1857 Bot Co - f [Isaac AUSTIN] - cd inflammation of stomach -rep by son David J CRAWFORD -w/o Samuel CRAWFORD

CRAWFORD, John - b [ca 1748] - d by Dec 1796 Bot Co - f John CRAWFORD - Ref WB A p438, will dated 24 Sep 1796 - Relatives: wife Margaret; Ch: John, William, Andrew, James, Samuel, Margaret; bro William

CRAWFORD, John - d by 9 Mar 1829 (ch called orphans) Bot Co - f [Andrew CRAWFORD] - Ch, _____, Madison J [? James Madison], John

CRAWFORD, John James - b 6 Jan 1837 Va -d 9 Nov 1913 Bot Co - f John CRAWFORD (b Va) -m Sallie (HOGAN) (b Va) - buried Flaherty burial ground - cd enlarged prostate gland

CRAWFORD, Josiah - b ca 1840 - d 20 Jan 1921 Bot Co - age 81y - f Samuel CRAWFORD - m Jane AUSTIN - wife Mary KESSLER - buried Crawford-Hinchee Cem (endof 765 off 605) not in Cemetary Book

CRAWFORD, Josiah - d 1826 (Bot Co WB E p104) - f [John CRAWFORD] - wife [Elizabeth] Ann TOOTLE - Ch: Madison, John, Isabella, Sarah, Susanah, Maria (unmd), Elizabeth, Bevelin, & Margaret

CRAWFORD, Josiah Lee - b 23 Jan 1863 - d 27 Feb 1952 Bot Co - f David J CRAWFORD - m Melvina JONES - wife Mary Blanche FORD - buried Crawford-Henchee Cem (end 765 off 605)

CRAWFORD, Josiah S - b [23 Feb] 1858 - d 1928 Bot Co - f [John S CRAWFORD] - m [Mary C QUISENBURY] - h/o Molly S (POLLARD) CRAWFORD - grave Mt Union Cem

CRAWFORD, Mary "Pollie" - b ca 1835 - d 19 Dec 1921 Bot Co - age 86y - f John KESSLER - m Betsy K KINZIE - hus Josiah CRAWFORD - buried Crawford-Hinchee Cem (end #765 off 605) not in Cem book

CRAWFORD, Mary Blanche - b 19 Dec 1874 - d 12 Oct 1957 Bot Co - f W A FORD - m S A - hus Josiah Lee CRAWFORD - buried Crawford-Hinchee (end 765 off 605)

CRAWFORD, Melvina - b 8 Mar 1835 - d 22 Jan 1910 Bot Co - f [James JONES] - m [Mary] - w/o D J CRAWFORD (1829-1904)- Ref Lemontown gravestone

CRAWFORD, Mollie S - b 1865 - d 1921 Bot Co - f [Shepherd POLLARD] - m [Sarah M SMITH] -w/o Josiah S CRAWFORD - grave Mt Union Cem

CRAWFORD, Nathan Thomas - b 17 Nov 1868 Bot Co - d 15 Dec 1938 Bot Co - f Josiah CRAWFORD - m Mary KESSLER -wife Daisey McCARTY - buried Crawford-Hinchee Cem

CRAWFORD, Nimrod - d 1842 (Bot Co Inv) (WB F p482) - [wife Elizabeth GRAY; Ch: Elizabeth HOLSTINE, Ann CALDWELL & Sally CALDWELL]

86
CRAWFORD, Ruby Ann - b 22 Feb 1886 Fr Co - d 22 Feb 1916 Bot Co - f Call
MULLENS (b Fr Co) - m Susie (SNYDER) (b Fr Co) - buried Daleville Cem - cd
lobar pneumonia

CRAWFORD, Samuel - d by 11 Nov 1867 Bot Co - Ex: 11 Nov 1867 Abraham SAVILLE

CRAWFORD, Sarah E - b 1 Oct 1836 Va - d 3 Dec 1913 Bot Co Va - f John FALLS
(b Va) -m Margaret (HAGIUS) (b Va) - buried Flaherty burial ground - cd
heart disease - [hus John J CRAWFORD]

CRAWFORD, Thornton L - b ca 1840 Bot Co (census #1221) - d 27 May 1862 Bot Co
- age 22y - f Joseph CRAWFORD - m Elizabeth [CRIST] - cd fever -rep by father

CRAWFORD, William - d 1835 Bot Co - f [John CRAWFORD] - m [Margaret] - rela-
tives: wife Margaret [KILPATRICK] - Ch: Jean KILLPATRICK, John, Margara,
Eufues, Elizabeth HARDY, Mary, Thomas, William, Joseph, James, Andrew K,
Robert K, Samuel F, Elexandra, Sarah; Gs John CRAWFORD; b-i-l: Robert KIRK-
PATRICK

CREASEY, George W - b 1 June 1844 Va - d 3 May 1913 - f Claiborne CREASY (b
Va) - m Anne (WITT) (b Va) - buried Buchanan Cem - cd TB

CRENSHAW, Abner - d by Apr 1814 - Ref WB B p385, appraisal

CRESS see Curtis ALDERSON

CRESSIN, Elliott - d by 14 Aug 1854 - Ex: William COPPINGER

CREWS, Robert W - b ca 1822 Va (census #1127) - d by 8 Apr 1861 - f Thomas
CREWS - m Sarah "Sally" - Adm Robert R DOUTHAT

CREWS, Sarah - b ca 1784 Amherst Co (census # 1127) - d 16 Apr 1853 - f not
given - cd pneumonia - rep by hus Thomas CREWS - Ex Thomas CREWS (12 Dec 1853)

CREWS, Thomas - b ca 1776 Va (census # 1127) - d by 8 Jan 1866 - h/o Sally -
Adm James ROWLAND, sheriff

CRIDER see Nicholas HAYNES

CRINER see Alivia Frances SMITH, Loyd B SMITH

CRIST see GRIST, Nicholas W CALDWELL, Sarah CALDWELL

CRIST (or GRIST), John - d by 8 Oct 1791 - Ref WB A p304, appraisal

CRIST, Olie Edward - b ca 1890 Rb Co - d 14 Apr 1916 - f Richard CRIST (b Rb
Co) - m Maggie (KING) (b Rb Co) - buried Oriskany Cem - cd diptheria

CRITTS (or CRITZ) see Ann McDONALD, Edward McDONALD, Abraham PETERS, Jacob
PETERS

CRITTS, George - d by June 1805 - Ref WB B p99, will dated 21 Jan 1805 -
Wife Mary; Ch: John, Elizabeth, Conrad, Mary (md _____ CRAFT), George, Tunay
[?Jinny?], Anney [Ann], Catty, Henrey, Philip - [on 14 Jan (or Feb) 1809 son
Philip was aged over 14]

CRITTS, George - d by Mar 1823 (order) - Ref: WB C p571, appraisal - admsrs:
Robert DICKEY, George THRASHER

CROCKETT see Lucy C BURNS

CROFT SEE John HAMILTON

CROFT, Johnathan - b ca 1845 Bot Co - d 16 Feb 1859 - age 14y 14m? 9d - f
David CROFT - cd brain fever - rep by father

CROFT, Robert - b ca Feb 1842 - d 17 June 1859 - 17y 4m 2d - f David CROFT -
cd brain fever - rep by father

CROMER see Sallie SWOOPE

CRONISE see Emma Cronise BRUGH, Maggie M STEVENS, Ann BREWBAKER

CRONISE, Anna Matilda - b 31 Oct 1827 - d 19 June 1907 Bot Co (Wheatland Cem)
- f REMSBUG - hus Jacob CRONISE - Ref: Cronise Scrapbook 42 & 48

CRONISE, Catherine - b 15 June 1842 Adams Co, Pa - d 12 Jan 1898 - f (b Pa)
- m (b Pa) - 1st w/o William H CRONISE - grave Wheatland Cem - 7 ch: John A,
Alice, Willis, Florence (md ____ FIDLER), Annie, Frank & Emery - Cronise
Scrapbook 55

CRONISE, Evaline D - b 31 Mar 1852 - d 26 Nov 1924 Bot Co (Wheatland Cem) -
f Matthew BOOZE - m Eveline - hus Marshall C CRONISE (md 5 Sep 1811 Bot Co)

CRONISE, Jacob - b 25 Aug 1822 (census 1880 Bot Co Buchanan Dist #250) - d 29
Jan 1901 Bot Co (Wheatland Cem) - age 73y 5m 4d - f Frederick CRONISE (d ca
1866) - m Anna NICODEMUS - (d 27 July 1896) - Relatives: wife Anna M REMSBURG
(md 25 Feb 1847), [Ch: 17 & 9 alive at his death], bro & sis: William,
(md Peter ZIMMERMAN), (md Jacob HEAGEY), (md Alexander RAMSBURG),
(md Daniel GAUGH) - Ref: Cronise Scrapbook 42 & 48

CRONISE, Marshall C - 23 Oct 1851 Frederick Co, Md (census 1880 Bot Co Buc-
hanan Dist #251) - d 6 Oct 1930 Bot Co, (Wheatland Cem) - f Jacob CRONISE -
m Anna M - wife Evaline D BOOZE (md 5 Sep 1871 Bot Co)

CRONISE, Sue E - b 1 Apr 1850 - d 17 Nov 1910 Bot Co (Wheatland Cem) - f
BOOZE - hus W H CRONISE

CRONISE, William H - b 22 Apr 1837 (census 1880 Bot Co Buchanan Dist #245) -
d 7 Apr 1912 Bot Co (Wheatland Cem) - f Jacob CRONISE - m Anna M NICODEMUS -
wife #1 Catherine (d 12 Jan 1898); wife #2 Sue E BOOZE

CRONK, (male) - b 25 Apr 1913 Bot Co - d 9 July 1913 - f Walter CRONK (b Mont
Co) - m Rosa (OLIVER) (b Rke Co) - buried Troutville Va cem - cd Marasumus

CROSBY see Joseph PHIPPS

CROSS see Mary DILL, Mary MAYS, Aurelia WHISLER, Lewis DILL, Andrew McCCLURE,
Charlotte McCCLURE, Joseph Thomas McCCLURE, Margaret Virginia McCCLURE

88
CROSS, John [md Polly MAYS] - b 1761 - d by 8 Nov 1830 (ch called orphans) - f [William CROSS] - m [Elizabeth] - Ch: Orilla (over 14), Lewis (over 14), Nancy (under 14), Malvina (under 14)

CROSS, Thomas - b ca 1780 Pa (census #514) - d by 10 Apr 1854 - h/o Elizabeth - Ex John A CROSS & Benjamin AMMEN

CROSS, William Sr - d by June 1798 - Ref: WB A p473, will dated 26 Apr 1798 - wife: Elizabeth; Ch: William Jr, Mary, Jane, John, Elizabeth md (___ Eath)

CROUCH see Elizabeth PARKER

CROUCH, Ella - b 18 June 1865 - d 11 July 1907 -w/o G CROUCH - grave Amsterdam Cen

CROUSE see Jacob Spiller, Mary A Moomaw

CROUSE, Catherine - b ca 1795 Rockingham Co, Va - d 15 Feb 1870 Amsterdam Twsp, Va - age 75y - f George CLINE - m Mary - cd Internal Rheumatism - rep by s-i-l Benjamin F MOOMAW - w/o Daniel CROUSE - Ref: Death Book; Moomaw graveyard gravestone - Ex bond 13 June 1870 W^m P MOOMAW

CROUSE, Daniel - d by Oct 1818 - Ref WB C p141, will dated 3 Sep 1818 - Wife Catherine - Ch Anny

CROWDER see Frank Crowder DAVIS, Samuel W TROUT

CROWDER, Bettie & Sallie (twins) - b 22 Mar 1913 Bot Co - d 23 Mar 1913 - f Miles Joseph CROWDER (b Craig Co) - m Sarah (DILLARD) (b Bot Co) - cd permatute

CROWDER, Henry - b 25 Aug 1916 Bot Co - d 25 Aug 1916 - f Joseph CROWDER (b Craig Co) - m Laura (DILLARD) (b Bot Co) - buried at home

CROWDER, Lena F - b 22 Apr 1915 Bot Co - d 8 Mar 1916 - f B L CROWDER (b Craig Co) - m Ida (SMITH) (b Bot Co) - buried White Church Cem - cd Bronchial pneumonia

CROWDER, Mary - b ca 1856 Bot Co - d 19 Oct 1862 - age 6y - f H E CROWDER - m E - cd diptheria - rep by father

CROY see Jacob SIMMONS

CRUMPACKER see Caterin BAIN, Abraham GRAYBILL, Rev George H GRAYBILL, Sarah GRAYBILL, Susan E GRAYBILL, Abraham SNIDER

CRUMPACKER, Abraham (widower) - b ca Oct 1767 Md - d 22 Apr 1859 - age 91y 6m 0d - cd dysentary - rep by dau Mary SHOWALTER

CRUSE, Thomas - b ca Nov 1772 "Camel" Co, Va - d 2 Aug 1859 Pattonsburg - age 86y 9m 2d - f Gideon CRUSE - cd old age - rep by dau Virg. GARDNER - h/o Sarah CRUSE

CRUSH see Julia Ann BARGER, Samuel NOFSINGER, Bulah Loren SECRIST, Mary Ruth SECRIST, Charlotte SIMPSON, Harriett SIMPSON, Henry B SIMPSON

CRUSH, Bettie - b ca 1860 Bot Co - d 27 Dec 1862 - age 2y - f Samuel CRUSH - m E - cd Diphtheria - rep by father

CRUSH, Charles E - b ca 1852 - d 24 Jan 1853 - f McDowell CRUSH - m C - cd carbuncle - rep by father

CRUSH, David - d 1832 Bot Co WB E p320 - [wife Susannah COULTER; Ch: Ann Eliza, Samuel McF, Jane S, Amanda, McDowell, Martha McP, & Edwood C]

CRUSH, Edward Carrington - b 11 Sep 1832 Bot Co - d 16 Sep 1913 - f David CRUSH (b Bot Co) - m Susan (COULTER) (b Bot Co) - buried Mt Moriah Cem - cd chronic Bronchitis - h/o Martha K CRUSH (d 1903)

CRUSH, Eliza - b ca 1862 Bot Co - d 20 May 1865 - age 2y 6m - f Ed CRUSH - m Martha A - cd croup - rep by mother

CRUSH, Jacob - b [ca 1794] - d 1875 (Bot Co Inv) (WB N p19) - f [maybe Peter CRUSH] - [wife Susanna SWISHER; Ch: _____, _____, Harriet, Hannah KIDDY, July A, Mary Magdaline KIDDY, George, Matthias, Cathernie, Elizabeth, Lydia, _____, Virginia, Paulina]

CRUSH, John Thomas - b 1 Mar 1854 Bot Co - d 6 May 1917 - f McDowell CRUSH (b Bot Co) - m Catherine (VANDERGRIFF) (b Bot Co) - buried Fincastle Cem - cd Mitral insufficiency

CRUSH, Maria L - b ca 1863 Rke Co - d 6 Feb 1865 - age 1y 4m - f William L CRUSH - m Margaret F - cd croup - rep by mother

CRUSH, Martha A - b 24 Oct 1838 - d 31 Jan 1903 - hus [Edward] - grave Mt Mariah Lutheran Cem

CRUSH, Mary F - b 1841 - d 1919 - f [William F RHOADS] - m [Mary] - [w/o William L CRUSH] - grave Fincastle Presbyterian Cem - [Ch: Ellen HEISLOP, Verner CRUSH]

CRUSH, McDowell - b ca 1827 (census 1850 Bot Co #1369) - d ca 1890's - f David CRUSH - Susannah COULTER - wife Catherine VANDERGRIFF - Ref: Cronise Scrapbook 52, no date

CRUSH, Peter - d by 11 Dec 1804 (son called an orphan) - son Jacob

CRUSH, S E - d 1928 Bot Co, Heir list - Ch: Eva GIVENS (b ca 1876), J H (b ca 1878), C P (b ca 1882), M A (b ca 1884), Bessie HARRIS (b ca 1888), H R (b ca 1892), R L (b ca 1895)

CRUSH, Samuel - b 26 Jan 1818 - d 7 Nov 1895 Bot Co (WB Q p107) - Relatives: [wife Harriet WAGGONER]; Ch: Samuel E, Mary S REID, Emma MILTON; Gs Howard CRUSH; [other ch, David McDowell] - see Cronise Scrapbook 47 & correction from Noftsinger to Crush on p 43

CRUSH, Samuel B - d 1920 Bot Co (will, WB 3 p154) - wife Mattie H - Ch Ella H

CRUSH, Sarah Virginia - b 24 June 1858 Bot Co - d 24 Apr 1916 - f J[acob] M LEMON (b Bot Co) - m [Martha] Jane (REID) (b Bot Co) - buried Oriskany Cem - cd pneumonia

CRUSH, William L (CSA) - b 1837 - d 1881 - m [Ann] - [h/o Mary F (RHOADS)
CRUSH] - grave Fincastle Presbyterian Cem

CUMB see Mrs James Emory McDANIEL

CUMMINGS see Catherine STYNE

CUMMINGS, John - d by 12 Aug 1777 -Ref Admr bond - Admr Robert PRESTON

CUMMINGS, Samuel Sears - b ca 1901 Rockbridge Co - d 4 July 1917 - f Custer
CUMMINGS (b Va) - m Susie (WRIGHT) (b Va) - buried Griffith, Va, Cem - cd
Cholera Infestum

CUNDIFF, Elizabeth Frances - b ca 1852, Bed Co - d 27 Oct 1854 - f Jefferson
CUNDIFF - m Mary E - cd Scarlet fever - rep by father

CUNDIFF, Leoti (male) - b ca Jan 1857 - d 25 May 1862 - age 5y 4m 5d - f
Edward B CUNDIFF - m S - cd unknown - rep by father

CUNDIFF, Sarah Ann - b ca 1853 Bed Co - d 28 Oct 1854 - f Jefferson CUNDIFF
- m Mary E - cd scarlet fever - rep by father

CUNNINGHAM - see Minnie M BUSH

CUNNINGHAM, _____ [Hugh??] - d by 12 June 1783 (son called an orphan) - son
William

CUNNINGHAM, Hugh - d by 13 May 1772 - Ref: WB A p17, will dated 30 Apr 1772,
Admr Bond - Relatives: Wife Sarah; Ch: Jesibel & 10 others, not named; Step-
son James DAVIS; s-i-l John YOUNG - Admr John YOUNG

CUNNINGHAM, John - d by 16 Nov 1807 - Ref WB B p181, appraisal - Admr James
BRECKENRIDGE

CUPP, Martha - b 12 Jan 1866 Va - d 25 May 1916 - f Roman LOVING (b Va) - m
Lizzie (FISHER) (b --) - buried Haymakertown Cem - cd Seneral paralysis

CURD, Charles E - b ca 1865, Bot Co - d 3 Aug 1868 Bot Co - age 3y - f John
E CURD - m Susan F [LUSTER] - cd drowned - rep by father

CURD, James Albert - b 10 May 1845 Bot Co - d 3 June 1917 Bot Co - f J E CURD
(b Va) - m Susan F (LUSTER) (b Va) - buried Fincastle Cem - cd Organic heart
disease

CURD, John T - b ca 2 Oct 1841 Bot Co - d 6 Oct 1861 Bot Co - age 20y 0m 4d
- f John E CURD - m Susan [LUSTER] - cd typhoid fever - rep by father

CURRY, William Sr - d by 8 Feb 1781 - Ref WB A p134, appraisal & Admr Bond -
Admr James CURRY

CURTAIN, _____ (maybe CUSTER) - d by 13 Oct 1795 (son called an orphan) - son
William

CUSTARD see CUSTER, Alexander CLAGE

CUSTARD, Lewis C - b ca 1848 - d Nov 1856 - f George CUSTARD - m Sarah - cd hurt in fall - rep by father

CUSTER see CUSTARD, Mary E DAVIS, Sarah F DAVIS, Catherin MERRITT

CUSTER, _____ - d 8 Feb (ca ?1900) near Fincastle, Bot Co - age ca 27y - hus James CUSTER - left 3 small ch - see Cronise Scrapbook 53 (no date)

CUSTER, Charles Adam - 7 Apr 1906 Bot Co - d 17 Sep 1917 - f James Edward CUSTER (b Bot Co) - m Mary Ellen (HAMILTON) (b Bot Co) - buried Eagle Rock Cem - cd caught in sawmill belt

CUSTER, Kent Oliver - b 6 July 1895 Bot Co - d 10 Jan 1916 - f George W CUSTER (b Craig Co) - m Jessie L (JOPLIN) (b Bot Co) - buried Springwood Cem - cd intestinal TB

CUSTER, Mattie E - b 29 Aug 1915 Bot Co - d 29 Aug 1915 - f E W CUSTER (b Bot Co) - m Mabel E (DUVALL) (b Rke Co) - buried Haymakertown Cem - cd still born

DAKIN, Jacob - b 15 Mar 1837 - d 30 June 1877 - Ref Presbyterian Cem gravestone at Fincastle - h/o Alice Dudley Brugh Dakin Waid

DAME, Betsy - b 11 Mar 1797 - d Apr 1797 - Ref Fincastle Presbyterian gravestone

DAME, George - d by 12 Apr 1815 (son called an orphan) - son Samuel

DAME, Samuel - d by 12 Feb 1844 (sons called orphans) - f [George DAME] - sons: Samuel (over 14), James (over 14)

DAMEWOODb - see Isaiah JOHNSON, Mrs Miah WILLS

DARBY, James - d by 28 Feb 1815 - Ref: WB B p425, WB C p371, appraisal & settlement - Note: included pension from US for widow & ch. - adm^r Mary DARBY

DARRICK, John - d by 14 Sep 1790 - Ref WB A p288, will dated 4 Aug 1790, admr bond - Relatives: wife Mary; Ch: Jonathan, Michael & others not named. - Admr Michael Derrick - In a suit on 11 May 1796, orphans named: Michael, Elizabeth, Mary, Barbara, Jonathan, Rosa, John, & Eve

DARST, Sarah "Sally" - b ca 1790 Va (census #1155) - d by 12 Feb 1866 - w/o Samuel DARST - Adm Edmund PENDLETON

DASHER see DEISHER, George RULE

DATZELL see John DEPEW Sr, maybe DELZELL

DAUSON, Hannah (widow) - b ca 1782 - d 9 Oct 1857 Poor House - rep by Steward

DAVENPORT see Hesakiah EUBANK

DAVIDSON see Mollie E RIELEY

92
DAVIDSON, Baker - d by 26 June 1805 - Ref WB B p106, appraisal, Adm^r: William DAVIDSON

DAVIDSON, Joseph - d by Dec 1814 - Ref WB C p40, appraisal

DAVIDSON, William Sr - d by Dec 1812 - Ref WB B p319, will dated 17 Nov 1812 - wife Martha; Ch: Ginny (m _____ McCARTNEY), Joseph, & 3 other sons & 3 other daus. - Ex^r: Joseph DAVIDSON, John PITZER Jr

DAVIS see Hugh CUNNINGHAM, Lucy FLAHERTY, Maggie FLETCHER, Catherine KESSLER, Clara A KESSLER, Francis M KESSLER, female MUSE, Sarah PALMER, Helen THOMPSON

DAVIS, (female & male) (twins) - d 8 Mar 1915 Bot Co - d 9 Mar 1915 & 10 Mar 1915 - f John F DAVIS (b Hawkins Co, TN) - m Martha E (KLEPPER) (b Hawkins Co, TN) - cd premature birth

DAVIS, Alexander - b ca Feb 1770 or 1790, Bot Co (census #378) - d 21 Aug 1861 - age 82y 6m 0d - cd paralysis - rep by son John DAVIS - Ex John E McCREERY (14 Oct 1861)

DAVIS, Andrew - b ca Oct 1862 - d 1 Nov 1862 - age 16d - f Joshua DAVIS - m Elizabeth - cd whooping cough - rep by father ??John DAVIS??

DAVIS, Clara (or Cloe) - b 8 Apr 1788 or 1792, Bot Co (census #378) - d 7 July 1858 - f [Henry SPICKARD] - cd unkn - rep by hus Alexander DAVIS

DAVIS, Elizabeth F - b ca 1850 Bot Co (1850 Census, Rke Co #579 aged 1m) - d ca 1909 Bot Co - f Reuben BRYANT - m Malinda called May (by p^s: dau of Lewis & Drusilla (PETERS) GISH) - w/o Henry L DAVIS (d 1909) - Ref Haymakertown Cem

DAVIS, Frank Crowder - b 22 May 1913 Baldwin Station, Bot Co - d 22 May 1913 - f Frank CROWDER (b Fincastle, Bot Co) - m Annie Bell DAVIS (p^s unmd) - buried Gale Cem - cd born dead

DAVIS, Henry - d by 14 May 1866 - Adm Robert R LUNSFORD

DAVIS, Henry L - b 1840 - d 1909 Bot Co - h/o Elizabeth F BRYAN (d 1909) - Ref Haymakertown Cem - [wife was adopted dau of Lewis & Drusilla (PETERS) GISH. See WB 1 p 516 for heirs: E K DAVIS, Drusilla PAINTER, Ida HARTMAN, Rebecca CLEMER, Pearl DAVIS, Clara M DAVIS, Cora T DAVIS, & Emery L DAVIS

DAVIS, John A - b 16 Mar 1836 - d 31 Oct 1911 - f [John DAVIS] - m [Ellender] - h/o Mary E DAVIS - grave Hogan-Old Cem (Little Catawba)

DAVIS, Lizzie Myrtle - b 12 Apr 1877 - d 19 Apr 1909 - f [Giles S] THOMAS - m [Katherine J PETTIT] - w/o Worth DAVIS (1874-1942) - Ref Foutz Cemetery gravestone

DAVIS, Lucinda - b 20 Aug 1809 - d 10 Mar 1896 - w/o William DAVIS (1808-1873) - Ref: Old Glade Creek gravestone

DAVIS, Mary E - b 4 June 1842 Va [Bot Co] - d 21 May 1914 - f William AUSTIN (b Va) - m Sallie (CUSTER) (b Va) - buried [Hogan]-Old Cem [Little Catawba] - cd heart disease - [w/o John A DAVIS]

DAVIS, Osborn - b 13 July 1849 Bot Co - d 19 June 1915 - f E DAVIS (b Bot Co)
- m Mary (JONES) (b Bot Co) - buried Glade Creek Cem - cd paralysis

DAVIS, Parmelie L - b ca 1858 Bot Co - d 20 Nov 1862 - age 4y - f Andrew DAVIS
- m M J - cd diptheria - rep by father

DAVIS, Pauline FOUTZ - b 1 Apr 1848 - d 15 June 1925 - f [Greenville FOUTZ]
- m [Sarah] - w/o Volney DAVIS - grave Foutz Cem (near Bonsack)

DAVIS, Philip - d by 14 May 1816 (dau called an orphan) - dau Sarah (over 14)

DAVIS, Sarah F - b 27 Nov 1830 Va [Bot Co] - d 26 Feb 1914 - f William AUSTON
(b Va) - m Sallie (CUSTOR) (b Va) - buried on home farm - cd dropped dead

DAVIS, Toliver A - b ca 1857 Bot Co - d 25 Mar 1916 - f H A DAVIS (b Bot Co)
- m Clara (OWENS) (b Bot Co) - buried Glade Creek Cem - cd lobar pneumonia

DAVIS, Viola F - b 1873 - d 1933 - w/o _ DAVIS - grave Foutz Cem (near Bonsack)

DAVIS, Volney - b ca 1842 Bot Co - d 7 Nov 1917 - f Henry DAVIS - m Adline
(PALMER) (b Bot Co) - buried Bonsack Cem - cd Cerebral hemorrhage

DAVIS, William - d 15 Sep 1808 - d 5 Apr 1873 - h/o Lucinda DAVIS (1809-1896)
- Ref Old Glade Creek gravestone

DAVIS, William S - b ca 1810 Va (census #855) - d by 10 Oct 1865 - h/o Eliza
G - Ex Joseph F Robinson

DAVIS, Worth - b 3 July 1874 - d 14 Apr 1942 - h/o Lillie?[Lizzie] M [THOMAS]
DAVIS (1877-1909) - Ref Foutz Cemetary gravestone

DAWSON see Charlie SLOAN

DAY see Mary KEFAUVER

DAY, infant - d by 9 Dec 1909 - m Julia DAY - cd bled to death through neglect
- Inquest papers

DAY, Benjamin, Major (Rev War soldier) - b ca 1752 - d 16 Feb 1821 Fredericks-
burg, Va - age 69y - rep in "Herald of the Valley" 12 Mar 1821

DAY, John - d by Oct 1819 (order) - Ref WB C p232 division - Ch: Elijah, Joel,
James

DEACON see George Washington NICELY

DEACON, John Franklin - b 27 Aug 1851 Va - d 4 Nov 1913 - f Douglass DEACON
(b Va) - m Margaret (SAVILLE) (b Va) - buried High Bridge Cem - cd Angina
Pectoris

DEAL see DEEL, Charles BROUGHMAN, Eliza SIMPSON, Thomas H SIMPSON

DEAL, George - d by Nov 1815 - Ref WB C p38, will dated 1 Dec 1813 - Relatives:
wife Magdalin; Ch: Peter, Mary Magdalin (md _____ HENDERLIGHTER), Susanna dec'd
(md _____ SPANGLER), wife's son Jacob SIGGEL [md 1795 Mary WAX], wife's dau^s
Mary BUMGARDNER, Susanna [ZIRKLE] FRINGER [md 1787], Christina SPICKARD, Eliz-
abeth [SEAGLE] NYE [md 1796], Molly [SEAGLE] STEVER [md 1797], Barbary COOK

94
DEALE, James Knox Polk - b ca 1844 Bot Co - d 15 Aug 1854 - f Hugh DEALE - m [Ann] - cd flus - rep by father

DEALE, Mary - b June 1838 Bot Co - d 12 June 1858 - cd consumption - rep by hus John DEALE

DEALE, Samuel - b ca 1852 Bot Co - d 12 Aug 1853 - f Hugh DEALE - m Ann - rep by father

DEALE, Samuel Jr - b ca 1822 (or 1820) Bot Co (census #855) - d 24 Oct 1854 - f Samuel DEAL - m Mary - cd typhoid fever - rep by father - h/o Emily - Adm Peter OBENCHAIN

DEAN see Rosa A TAYLOR

DEARD see Peter HINER

DEARDORFF see Harman BRUGH, DIERDOFF

DEARDORFF, Henry - d by 13 Sep 1791 (6 Oct 1792 marked out) - Ref WB A p314 appraisal & Admr bond - Relatives on 11 Sep 1792, his orhpans Elizabeth, Jacob & Paul - Admr Mathias SNIDER

DEARING see DEERING

DEATON, George E - b ca Sep 1869 Bot Co - d 27 Oct 1869 [in 1870 census] - age 0y 1m 7d [should it be 1y 1m 7d] - f George P DEATON - m Mary S - rep by father

DEATON, Martha C - d by 13 Apr 1822 - Ref WB C p348, Appraisal & Sale - [widow of Levi DEATON]

DECKER, Fannie H - b 11 Feb 1850 - 30 Apr 1929 - w/o William C DECKER - grave Mt Union Cem

DECKER, William C - b 25 Oct 1840 - d 17 Aug 1928 - h/o Fannie H DECKER - grave Mt Union Cem

DEEDS see Susan DWIRE, Rebecca Jane RIDDLEBARGER, Elizabeth SLUSSER

DEEDS, Emma Elizabeth - b 24 Mar 1864 - d 9 Jan 1894 - w/o B D DEEDS - grave Haymakertown Cem

DEEDS, John - b 10 Dec 1829 - d 1890 - h/o Sarah S DEEDS (d 1906) - grave Haymakertown Cem

DEEDS, John H - b 16 Oct 1860 - d 28 Dec 1891 - grave Haymakertown Cem

DEEDS, Lou Ann - b 24 Sep 1872 - d 28 Dec 1894 - grave Haymakertown Cem

DEEDS, Sallie E - b 5 Aug 1893 - d 5 Sep 1893 - f B D DEEDS - m Emma Elizabeth - grave Haymakertown Cem

DEEDS, Sarah S - b 21 Sep 1833 - d 7 June 1906 - w/o John DEEDS (d 1890) - grave Haymakertown Cem

DEEL see DEAL, Missouri EASTON, female READ

DEEL, male - b 22 Aug 1912 - d 22 Aug 1912 - f Grover Cleveland DEEL (b Bot Co) - m Bertha E (WHEIGHT) (b Rke Co) - buried Mill Creek Cem - cd still born

DEEL, Charlott V - b ca Jan 1865 Bot Co - d 21 Sep 1865 - age 9m 10d - f Martin V DEEL - m Ann E - cd dysentary - rep by father

DEEL, Malinda - b 3 Jan 1841 Bot Co - d 25 Feb 1913 - f Eleck FELLERS (b Bot Co) - m Elizabeth (COOK) (b Bot Co) - buried Mill Creek Cem - cd pneumonia

DEEL, Mary Ann - b 12 Aug 1826 Bot Co - d 10 Dec 1859 - yr 33y 8m - f Jacob OBENSHAIN - m Mary - cd consumption - rep by hus Ferdinand W DEEL - cem Obenshain Cem (East of Mill Creek Cem)

DEEL, Ruebenia - b ca 1785 Va (census #541) - d by 13 Aug 1855 - Adm Solomon SECRIST

DEEL, Samuel (widower) - b ca 1794 Rockbridge Co - d 1870 Buchanan Twsp - age 76y - cd age - rep by d-i-l Mary DEEL

DEEL, Wesley - b 21 Nov 1916 Bot Co - d 10 Dec 1916 - f J[ohn] W[illiam] DEEL (b [Bot Co] Va) - m Pearl (OBENSHAIN) [b Bot Co] - buried Obenshain Cem - cd Maulnutrition

DEERING see DEARING, Sarah Virginia ST CLAIR

DEFREESE see Audley PAUL Sr

DEISHER see DISHER, George RULE, David NOFFSINGER, Samuel OBENSHAIN, Charles Ivan STOVER, Iva Preston WILHELM, Margaret Dean WOOD

DEISHER, female - b ca Oct 1858 Bot Co - d 15 Feb 1859 - age 4m - f A[bsalom] P DEISHER - m [Frances J] - cd not known - rep by father

DEISHER, Absolom Preston - b 4 Apr 1833 Bot Co - d 15 Mar 1915 - f George DEISHER - m Sarah (HAMBRICK) - buried Eagle Rock Cem - cd Cerebral Hemorrhage

DEISHER, Amanda - b 14 July 1854 Craig Co - d 21 May 1914 - f Miles J BIGGS (b ?Craig Co) - m Eliza J (HOWARD) - buried Deisher Cem - cd TB

DEISHER, Betsy - b 1821 - d 1897 - f Mathias CIRCLE - m Mary ARMENTROUT - w/o Christian DEISHER - Ref Locust Bottom gravestone

DEISHER, Charlton (unmd) - b Bot Co - d 5 Sep 1857 - m Mary DEISHER - cd fever - rep by bro Evans DEISHER

DEISHER, Diannah - b ca 1812 Bot Co (census #1520) - d 5 June 1858 - age 46y - Joseph PECK - m [Susannah FRANKLIN] - cd flux - rep by hus Jacob DEISHER

DEISHER, Elizabeth - b ca 1809 Bot Co - d 10 Aug 1864 - age 55y - f Jacob SNIDER - m Susan - cd dropsy - rep by hus Peter DEISHER

DEISHER, Evans Jr - d 2 Dec (age 31y) Bot Co (near Strom on Roaring Run of Craig's Cr) - f Charles Evans DEISHER Sr (b 15 Dec 1831 Auston's book; b ca 1833 census) - m Adelin MCCARTNEY - obituary in Cronise Scrapbook 18 (no date)

96
DEISHER, Jacob - b ca 1800 Va (census #1520) - d by 13 Oct 1862 - f John
Deisher - m Susannah STRETES - h/o Dianah PECK - Adm John B CAHOON

DEISHER, Jacob - b 28 June 1823 Va (census #815) - d by 13 Nov 1865 - f Jacob
DEISHER - m Christiana RULE - h/o (1) Frances FLAHERLY, (2) Mary Jane Matilda
OWEN - Adm Mary Jane Matilda DEISHER

DEISHER, James M - b 22 May 1833 - d 4 July 1926 Bot Co (gravestone) - wife
Minerva OBENCHAIN - Mt Pleasant Cem

DEISHER, Lewis R - b 3 July 1841 Va - d 28 Sep 1917 - f Christian DEISHER (b
Va) - m Frances (CIRCLE) (b Va) - buried Locust Bottom Cem - cd Senility

DEISHER, Marjory Josephine - b 27 July 1917 Bot Co - d 9 Nov 1917 - f J[ames]
Q DEISHER (b Bot Co) - m [Josephine] "Joice" M (PETERS) (b Bot Co) - buried
Shiloah Cem - cd ?Imacition? fever

DEISHER, Mary Jane Wilson - b ca 1851 Bot Co - d 21 Feb 1853 - f George F
DEISHER - m Mary [WRIGHTSMAN] - cd casualty - rep by father

DEISHER, Minerva Obenchain - b 20 Sep 1834 - d 4 July 1890 Bot Co (gravestone)
- hus James M DEISHER - Mt Pleasant Cem

DEISHER, Samuel Ashby - b 1867 - d 1893 Bot Co gravestone - Mt Pleasant Cem

DEISHER, Susan - b ca 1772 Pa (census #978) - d 4 Jan 1862 - f [Jacob STRETES]
- cd old age - rep by son Peter DEISHER - Adm Samuel BURGER (9 Feb 1863)

DEISHER, Susan - b 3 June 1847 - d 24 Dec 1872 - f John B ALLEN - m Clementine
HUNTER - w/o John E DEISHER [no] - Ref Beaverdam gravestone

DEISHER, Virginia - b ca 1853 Bot Co - d 1 July 1853 - f John E DEISHER - m
Sarah [Susan Ann] - cd bowel complaint - rep by father

DEISHER, Volney - d by 8 Aug 1859 - f [maybe s/o Peter DEISHER] - m [Polly
SHEETS] - h/o Mary - Ex Abraham SAVILLE & Evans DEISHER

DE LONG see Maggie M FRINGER

DELONG (male) - b 23 July 1869 Bot Co - d 24 July 1869 - 1d - f George T DE-
LONG - m Elizabeth F - rep by father

DELONG, George - b ca 1776 Pa (census #695) - d by 12 Sep 1864 - Adm John B
ALLEN, another bond 3 Aug 1866

DELONG, Susanna - b ca 1779 Pa (census #695) - d 1 Feb 1856 - cd paralysis -
rep by hus George DELONG

DELONG, Susan Virginia - b ca 1837 Bot Co - d 13 Apr 1861 - age 24y - f
[George DELONG] - m Nancy DELONG - rep by mother

DELONG, William B - b ca 1836 Bot Co - d 27 Mar 1867 - age 31y - f George
DELONG - m Nancy - cd heart disease - rep by bro George T DELONG - h/o
Adaline DELONG - Adm 9 Sep 1867 George T DELONG

DISHER, Jacob - b ca 1800 Va (census #1520) - d by 13 Oct 1862 - f John Deisher - m Susannah STRETES - h/o Dianah PECK - Adm John B CAHOON

DEISHER, Jacob - b 28 June 1823 Va (census #815) - d by 13 Nov 1865 - f Jacob DEISHER - m Christiana RULE - h/o (1) Frances FLAHERLY, (2) Mary Jane Matilda OWEN - Adm Mary Jane Matilda DEISHER

DEISHER, James M - b 22 May 1833 - d 4 July 1926 Bot Co (gravestone) - wife Minerva OBENCHAIN - Mt Pleasant Cem

DEISHER, Lewis R - b 3 July 1841 Va - d 28 Sep 1917 - f Christian DEISHER (b Va) - m Frances (CIRCLE) (b Va) - buried Locust Bottom Cem - cd Senility

DEISHER, Marjory Josephine - b 27 July 1917 Bot Co - d 9 Nov 1917 - f J[ames] Q DEISHER (b Bot Co) - m [Josephine] "Joice" M (PETERS) (b Bot Co) - buried Shiloah Cem - cd ?Imacition? fever

DEISHER, Mary Jane Wilson - b ca 1851 Bot Co - d 21 Feb 1853 - f George F DEISHER - m Mary [WRIGHTSMAN] - cd casualty - rep by father

DEISHER, Minerva Obenchain - b 20 Sep 1834 - d 4 July 1890 Bot Co (gravestone) - hus James M DEISHER - Mt Pleasant Cem

DEISHER, Samuel Ashby - b 1867 - d 1893 Bot Co gravestone - Mt Pleasant Cem

DEISHER, Susan - b ca 1772 Pa (census #978) - d 4 Jan 1862 - f [Jacob STRETES] - cd old age - rep by son Peter DEISHER - Adm Samuel BURGER (9 Feb 1863)

DEISHER, Susan - b 3 June 1847 - d 24 Dec 1872 - f John B ALLEN - m Clementine HUNTER - w/o John E DEISHER [no] - Ref Beaverdam gravestone

DEISHER, Virginia - b ca 1853 Bot Co - d 1 July 1853 - f John E DEISHER - m Sarah [Susan Ann] - cd bowel complaint - rep by father

DEISHER, Volney - d by 8 Aug 1859 - f [maybe s/o Peter DEISHER] - m [Polly SHEETS] - h/o Mary - Ex Abraham SAVILLE & Evans DEISHER

DE LONG see Maggie M FRINGER

DELONG (male) - b 23 July 1869 Bot Co - d 24 July 1869 - 1d - f George T DELONG - m Elizabeth F - rep by father

DELONG, George - b ca 1776 Pa (census #695) - d by 12 Sep 1864 - Adm John B ALLEN, another bond 3 Aug 1866

DELONG, Susanna - b ca 1779 Pa (census #695) - d 1 Feb 1856 - cd paralysis - rep by hus George DELONG

DELONG, Susan Virginia - b ca 1837 Bot Co - d 13 Apr 1861 - age 24y - f [George DELONG] - m Nancy DELONG - rep by mother

DELONG, William B - b ca 1836 Bot Co - d 27 Mar 1867 - age 31y - f George DELONG - m Nancy - cd heart disease - rep by bro George T DELONG - h/o Adaline DELONG - Adm 9 Sep 1867 George T DELONG

DELZELL, James - d by Sep 1815 - Ref: WB C p5, will dated 22 June 1815 - Wife Martha; Ch: James, Hugh, Nancy, Sally, Betsy - Ex^r Martha DELZELL

DELZELL, Mary (widow) - b [ca 1775] Va - d Sep 1849 - age 74y - f [James MOORE] - cd Erysipelas - Ref 1850 Bot Co Mort Schedule - [hus Robert DELZELL]

DEMPSEY see Daniel CAMPBELL

DEMPSEY, Absalom Cornelius - b 17 Dec 1787 - d 26 June 1872 - h/o Elizabeth B - grave Mill Creek Cem

DEMPSEY, Elizabeth B - b [6 Nov 1787] - d [ca 1874] - age 87y - f [Henry BOLTON] - w/o Absalom C DEMPSEY - grave Mill Creek Cem

DEMPSEY, William - d by 11 June 1806 (ch called orphans) - Ch: Judith (over 14), Dubartus (over 14), Lucy (over 14)

DENNIS, Edward - d by 22 Nov 1816 - Ref WB C p62, 112, 152, appraisal & settlements - Note: divison of slaves into 3 lots, heirs not named. - Adm^r: Ann DENNIS

DENNIS, John - d by 3 Sep 1924 - cd car wreck - Ref: Inquest papers

DENNIS, Joseph - d by June 1794 - Ref: WB A p375, will dated 26 July 1790 - wife Mary; ch: not named - Admrs: Mary DENNIS, James PEERY

DENNIS, Lang (colored) - d by 26 Dec 1886 - cd excessive drink - Ref: Inquest papers

DENNISTON, John - d by 15 Nov 1775 (7 May 1776 marked out) - Ref: WB A p66 , appraisal & admr bond - Admr John HENDERSON

DENT, James Lee - b ca 25 Feb 1861 Bot Co - d 27 July 1862 - age 1y 5m 5d - f H[arvey] DENT - m Hester - cd teething - rep by mother

DENTON see Philip E FIREBAUGH, Lewis KESSLER, Albino G LAYMAN, George G LAYMAN, Robert ANDERSON

DENTON, Anna - b 12 Aug 1812 - d 26 Jan 1897 - f Christian MOOMAW - m Catherine SNIDER - w/o Robert A DENTON (1815-1880) - Ref Daleville gravestone

DENTON, Benjamin - d by 11 Oct 1814 (14 Nov marked out) - Ref WB C p277, settlement - Ch: on 11 Oct 1814 his orphan John A (over 14) - Adm^{rs}: Margaret DENTON, William ANDERSON

DENTON, Dallas A - b ca 1799 Bot Co - d 15 Aug 1865 - age 65y 11m 21d - f Benjamin DENTON - m Mahala -cd asthma - rep by wife Patsy A DENTON - Adm: 8 Oct 1866, Sheriff Lewis LINKENHOKER

DENTON, Robert A - b 30 Sep 1815 - d 2 June 1880 - h/o Anna DENTON (1812-1897) - Ref Daleville gravestone

DENTON, Theodore E - b 11 Oct 1848 Bot Co - d 18 Jan 1914 - f Robert DENTON (b Bot Co) - m Annie (MOOMAW) (b Bot Co) -buried Daleville Cem - cd delitaion of heart

DENTON, William A - b ca 3 Sep 1843 Bot Co - d 17 Sep 1862 Sharpsburg, Md - age 19y 0m 14d - f Dallas A DENTON - m Patsy - cd gun shot -rep by father

DEPEW, John Sr - d by Sep 1811 - Ref WB B p 264, will date 27 June 1809 - Relatives: Wife Catherine; Ch: Elijah, Isaac, John, Lewcrecia (md _____ DETZELL), Abraham, James, Jacob, Samuel (dec'd) (his 3 ch, not named), Gdau Mary DEPEW (of James)

DEPEW, Samuel - d by 8 Nov 1791 (13 Jan 1792 marked out) - Ref WB A p310, WB B p363, appraisal & admr bond, division - Relatives: wife Polly; gdns of orphans named but ch not named 13 Dec 1791, 10 Jan 1792 & 13 Sep 1808 - Admr Mary DEPEW, Elijah DEPEW

DERRICK see DARRICK

DETZELL see John DEPEW Jr, also DELZELL, DALZELL, etc

DEYERLE see James SMITH

DICKERSON see William KYLE, Ulyses PUGH

DICKEY see Catherine GURTNER

DICKEY, Magdalene - b ca 1830 Bot Co - d 10 Oct 1853 Gilmore Co - Robert S DICKY (farmer) - m Margaret - cd fits - rep by father

DICKEY, Robert S - b ca 1785 Pa (census #1267) - d by 14 Sep 1857 - h/o Margaret - Ex William J DICKY

DIERDOFF see DEARDORFF, Daniel BRUGH, Elizabeth BRUGH, John BRUGH Sr

DIERDOFF, Christena - b ca 1840 - d 16 Nov 1924 - age 84y 10m - Ref Old Dutch Cem

DIETRICH, Elizabeth - b 19 Sep 1788 - d 15 July 1880 - Ref Old Glade Creek Gravestone

DIGGS see Martha Diggs BURWELL

DILL see A[nn]a BREWBAKER, Harvey D LIPES, Joel BREWBAKER, John BREWBAKER

DILL, Eliza Jane - b 12 Oct 1834 Bot Co - d 19 Sep 1912 - f William PECK (b Bot Co) - m Lumina (FINCH) (b Campbell Co) - buried Springwood - cd obstruction of bowels

DILL, Henry - d by June 1818 - Ref WB C p122 & 355, will dated 3 Mar 1818, division - Relatives: wife Mary, Ch: Andrew, Esther, Susanna, Anne (md Abraham Brubaker), _____ (md John RHEA, dec'd, his 5 ch one named Rebecca), Jacob; s^s-n-1 Daniel DILMAN, Michael RULE, b-i-1 Jacob AGIST, Others: Nicholas YOUNG (md Catherine) - orphan Esther was aged over 14 by 7 May 1821

DILL, Lewis - b ca 1829 Va (census #696) - d by 12 Mar 1860 - f Andrew DILL - m Mary CROSS - adm Andrew DILL

A SHAWSVILLE HOME, ca. 1750



DAVE HUTCHESON/STAFF

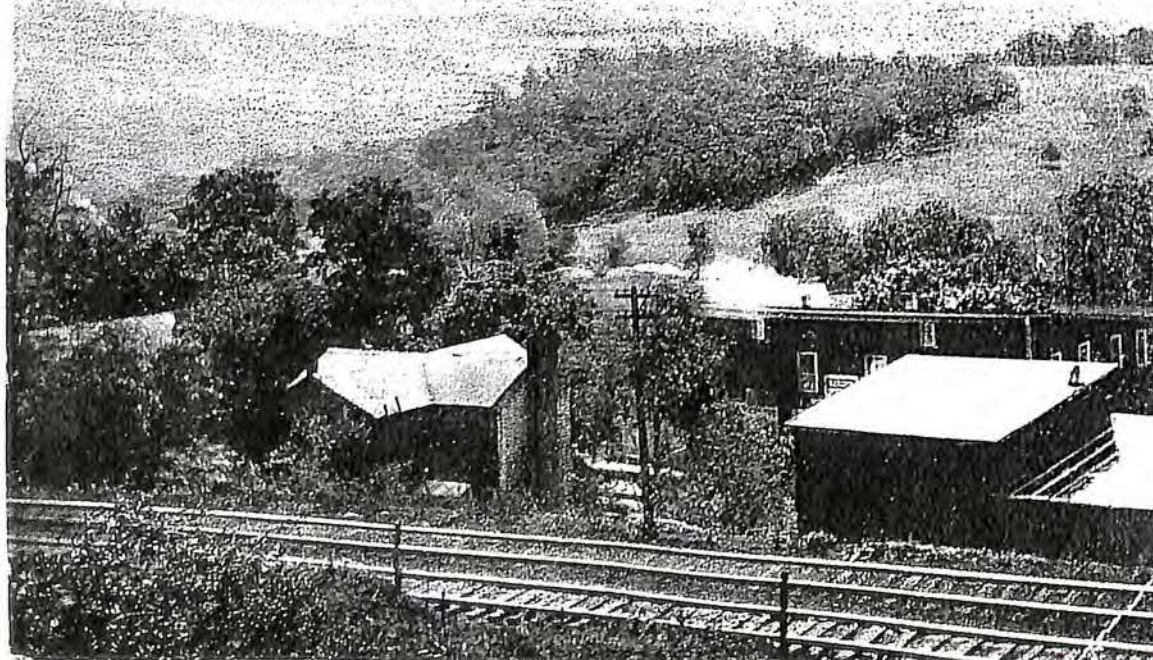
The Pappas home in Shawsville is about 250 years old, and was formerly a tavern and lodging place, whose guests may have included George Washington, frontiersman Daniel Boone, and the explorers, Lewis and Clark.

Much of the house has been altered, but it is undergoing restoration. The floors, believed to date to the time the house was built, are made of chestnut. Some of the boards in the walls measure 12 to 18 inches wide. One board is 21 inches wide.

Karen Pappas, the owner, says the house was probably owned by the same family for the first 100 years.

Credit Progress '96, New River Newspapers, L.L.C. Wednesday, February 28, 1996

MOUNTAIN SCENE—NEAR SHAWSVILLE, VA.



CA. 1909

GENEALOGICAL QUERIES: Each member is entitled to one (1) to three (3) free 60 word query (does not include your name and address) per issue as space permits. The typist will not compose queries for you, so please make your query as clear and specific as possible so that others can understand them and have a chance to help you. Each query should include name, dates, and location to identify the problem. Please CAPITALIZE surnames - is it Mary Smith JONES (single) or Mary SMITH JONES (maiden & married name). Do not abbreviate, we will. If not typed, please PRINT — some written queries we have not been able to read. Queries for non-members are 5¢ (cents) per word not including your name and address. Queries must be received prior to the 1st of the month preceding publication.

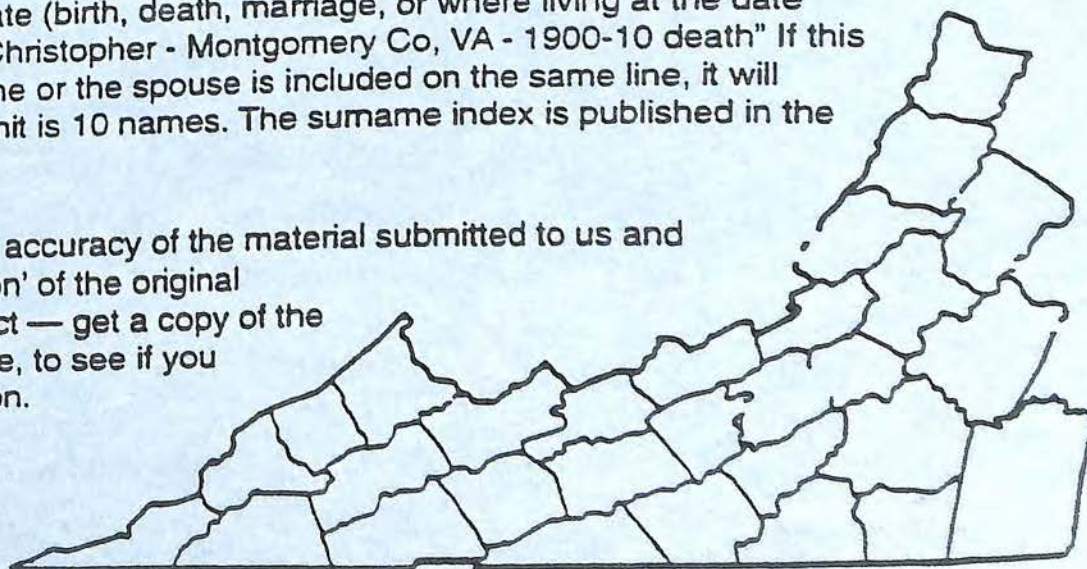
FAMILY REUNION, PUBLICATION OF BOOK, NEWSLETTERS, ETC.:

Limited to 60 words, not including your name and address. We cannot edit a full page down to 60 words — so send the notice as you want it printed. These notices will be put in as space permits. Members will be given priority in publishing these notices.

MATERIAL FOR PUBLICATION: We welcome articles, records, etc. for publications. The material when received may not be used in following issue, but in a future issue. If a large amount of material is sent, it may take a while to publish because we try to have a variety of material in each issue. (1) **READY FOR PUBLICATION** (*which the editor loves*). Please type using a carbon ribbon or dark ribbon and CLEAN KEYS. Use 8 1/2" x 11" paper, single space, with a minimum margin on ALL sides of 1 inch. Center your title. Be sure to include your name, address, and date (year) on the document. If not typed for publication, please PRINT PLAINLY — some articles that have been hand written we have not been able to read, or those that are typed with all caps are difficult to read. PLEASE read material over before mailing and double check all dates. (2) **GIVE SOURCE OF MATERIAL.** Original documents — where found, type of record, page number, etc., or, if known, who now has the document in their possession. We CANNOT PRINT material from printed sources unless we have written permission from the publisher, which you MUST FURNISH. We must have source of material to give credit to the person who has done the work. (3) **DEADLINE** for submitting material should be at least two months before date of publication. (4) **PLEASE** do not send material that you want returned — send a photocopy to us instead. That way it won't get lost, as letters do get misplaced, when passed from one person to another.

SURNAME INDEX: Information will include name (given and surname), place (location at time of date), Date (birth, death, marriage, or where living at the date given). "WASKEY, William Christopher - Montgomery Co, VA - 1900-10 death" If this data takes more than one line or the spouse is included on the same line, it will count as two names. The limit is 10 names. The surname index is published in the August issue.

VAN cannot vouch for the accuracy of the material submitted to us and printed by us. The 'translation' of the original document may not be correct — get a copy of the original document, if possible, to see if you agree with the printed version.



SPRING 2005

Southwestern Virginia Genealogical Soc., Inc.
P.O. Box 12485
Roanoke, VA 24026

NON/PROFIT ORG.
U.S. POSTAGE
PAID
PERMIT NO 374
ROANOKE, VA

Address Service Requested

1038
ROANOKE PUBLIC LIBRARY FOUNDATION
706 S Jefferson St
Roanoke VA 24016-5104
|||||