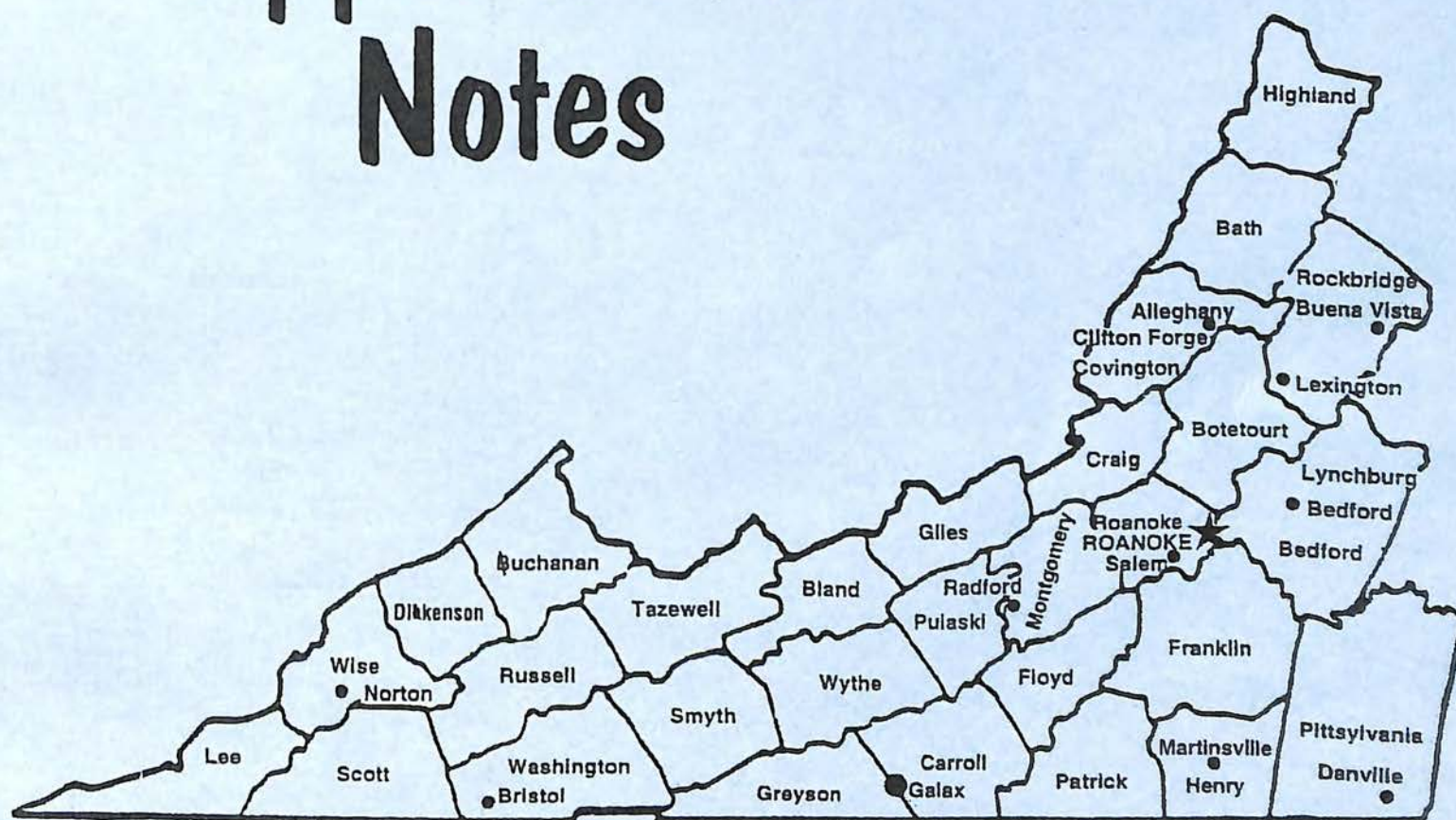


WINTER 2008

Virginia Appalachian Notes



Southwestern Virginia Genealogical Society
Roanoke, Virginia



Roanoke City Public Library
Virginia Room

SOUTHWESTERN VIRGINIA GENEALOGICAL SOCIETY INC
Calendar Year 2008

Officers and Executive Board

		Area Code 540	email address
President	Karen Kappesser	977-0067	gkkapp@infionline.net
Vice-President	Pamela B. Young	342-2367	pmyoung001@aol.com
Record Secretary	Vacant		
Corresponding Secretary	Mickey Prescott	985-0751	mprescott3@cox.net
Treasurer	Don Vaughan	989-8645	DONSVGS@aol.com
Membership	Jim Nelson	725-5303	jasnelson@cox.net
VAN Editor	Michael Blankenship	989-1469	mblankens@yahoo.com
Immediate Past President	Pamela B. Young	342-2367	pmyoung001@aol.com
VAN Editor Emeritus	Babe Fowler	563-1733	fowlervw@cox.net

Committees

Computer/Labeler	Don Vaughan	989-8645	DONSVGS@aol.com
Program	Pamela B. Young	342-2367	pmyoung001@aol.com
Historian	Babe Fowler	563-1733	fowlervw@cox.net
VAN	Michael Blankenship	989-1469	mblankens@yahoo.com
Exchange Quarterlies	Virginia Room Staff		
Publicity	Pamela B. Young	342-2367	pmyoung001@aol.com
Book Reviews	As Signed		

The **SOUTHWESTERN VIRGINIA GENEALOGICAL SOCIETY, INC.** is a tax-exempt corporation under section 501(c)(3) of the Federal Income Tax Code. Section 170 of the Tax Code provides for the treatment of contributions to the SVGS as a deductible contribution by the donor. Bequests, legacies, devises, transfers, or gifts to the SVGS may be deductible for Federal estate gift tax purposes, if they meet the applicable provisions of sections 2055, 23106, and 2522 of the Tax Code.

MEMBERSHIP: Each SVGS member will be mailed a copy of the "Society's" quarterly, the VIRGINIA APPALACHIAN NOTES (VAN). The VAN is usually published quarterly. The annual index will be included in the Fall issue of the VAN for that year. Society memberships are on a calendar year basis and those memberships, which are not renewed by January 30, will be deemed as inactive and removed from the VAN mailing list. Single or family memberships are \$20.00; Organization and Library memberships are \$15.00. Members with mailing addresses outside the United States shall add \$10.00 to the above fees and all monies are payable in U. S. currency. All payments should be made by check or money order, payable to: **Southwestern Virginia Genealogical Society, Inc. or to SVGS, Inc.** and mailed to: **SVGS, ATT: Membership, Post Office Box 12485, Roanoke, VA 24026-2485.**

BACK ISSUES of the VAN: 1995 and earlier, are available at a reimbursement cost of \$4.00 each, as long as the supply lasts. More recent issues are \$6.00 each. These prices include postage. Mailed to Virginia addresses please add 4.5% sales tax. A bulk mailing of old VANs to one address may be eligible for a discount. All payments should be made by check or money order, payable to SVGS and mailed to: **SVGS, ATT: Jim Nelson, Post Office Box 12485, Roanoke, VA 24026-2485.**

BOOKS for REVIEW: Books submitted to the Society will be reviewed and the review printed in a subsequent issue of the VAN. When submitting a book, please include the price of the book, copies of the available advertising material, and information as to where orders for additional copies may be placed. Following their review, all books will be placed in the Virginia Room of the Roanoke City Library, Roanoke, Virginia.

VIRGINIA APPLACHIAN NOTES

Published Quarterly

By

SOUTHWESTERN VIRGINIA GENEALOGICAL SOCIETY, INC.

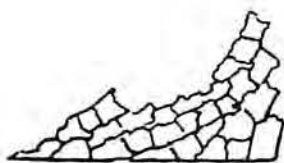
Vol. 32 - No. 1 - Winter 2008
(January, February, March)

CONTENTS

New Books In the Virginia Room submitted by Pamela Young	1
Stone Printing Company submitted by Jean McGrady	7
William Mead of Bedford County submitted by Mary Ann Barnes	10
Records of Coffin Maker Marion Thomas Hall of Floyd County submitted by Judith Blackwell	11
African American Ancestry, Patsy Blankenship of Giles County submitted by Michael Blankenship	18
John Talbert Morgan submitted by Sam O. Morgan	22
Botetourt County Death Records, Continued research by Charles T. Burton	25
Article Index for VAN Vol. 31, 2007 by Babe Fowler	40
Name Index for VAN Vol. 31, 2007 by Babe Fowler	41

Submissions for future issues are always welcome.
If you would like to contribute an article on-line please e-mail it to:
mblankens@yahoo.com.

The content of the VAN is supplied by its membership.



Southwestern Virginia Genealogical Society, Inc.

P. O. Box 12485
Roanoke, Virginia 24026

Dear Fellow Members,

I always think I've contacted or heard from about everyone related to one of my main surnames. Well a month ago I received an interesting package in the mail. I did not recognize the name but it came from the Syracuse, NY area where my ENGEL family is from. It contained two CDs and a letter. I began reading the letter and it made no sense, I didn't recognize the surnames she was listing. My first thought was that she had my ENGEL's confused with hers. I'd have to set her straight. Reading a little further something clicked...her great grandfather was my "Uncle Harry", my grandfather's older brother!! My parents had a summer home just up the road from his and I spent much time there visiting with him, my grandparents, who were frequent guests, plus other great aunts and uncles. Harry had a son, Charles, who was not well liked due to a family dispute but in 1994 I sent what information I had on the ENGELS to his son, Charles Jr. This material was pasted on to his sister and in turn to her daughter. Teresa was so excited to get it that she wrote to me (luckily I still live at the address she had!!) to thank me for my work and provided CDs with both old and new family photos. She said her mother knew little about the ENGEL side of the family most likely due to the rift that occurred in the 1960's. Uncle Harry's wife died before I was born so I have no memory of her. Teresa told me she was Irish and wrote beautiful poetry. She said she had a book of her poems and would copy and send it to me. I was amazed at these poems, some sad, some happy, some about everyday things. It reaffirms my feeling that those that have gone before us want us to know them. Agnes Garvey ENGEL wants us to know her through her beautiful poetry.

Just a reminder about the 2008 Surname Index. For members with surnames in the index you may submit changes or updates to me directly at the address below. Check your listing in the Summer 2006 issue. New members or old members not having listings may submit up to six (6) names in the following format:

SURNAME given name Country or State Locale (County, City or Town) Date

ENGEL Carl Germany-NY Syracuse 1850

Again, you can submit your names directly to me at the address below. Email if you like.
Closing date for submissions will be June 1st.

Happy Hunting,

Karen Kappesser, President
514 Scalybark Drive
Blue Ridge VA 24064-1328
Telephone: (540) 977-0067
E-mail: gkkapp@infionline.net

New Books in the Virginia Room

Winter 2007

975.501 En19 Encyclopedia of Virginia Indians volumes 1 & 2 Editor & publisher Frank H. Gille 1999 Somerset

920.72 B631 H639n Never Ask Permission, Elisabeth Scott Bocock of Richmond, A Memoir by Mary Buford Hitz 2000 UVA Press

929.09768 F956g Guide to County Records & Genealogical Resources in Tennessee compiled by Richard Carlton Fulcher 1987 Genealogical Publishing

917.554 J239 The Official Guide to Historic Triangle '2007 by the Williamsburg Foundation

378.755792 R531ra Rawenoch: Roanoke College Yearbook 1984, 1986, 1988 1989, 1990, 1992, 1994

632.2109755 W85d Dr Francis T. Stribling and Moral Medicine, Curing the Insane at Virginia's Western State Hospital: 1836-1874 by Alice Davis Wood 2005 GallileoGianniny Publishing

312 Un3n 1790-1915 Negro Population in the United States 1790-1915 US Bureau of the Census 1969

312 Un3n 1920-1932 Negroes in the United States 1920 - 1932 US Bureau of the Census 1969

917.5 W375p Pioneers of Destiny: The Romance of the Appalachian People by W. D. Weatherford 1955 Vulcan Press

SC 917.5 P14o The Old South Essays Social & Political by Thomas Nelson Page 1892

975.5911 T756s Stauton Images of America by Sergei Trouberzkoy 2004 Arcadia Press

975.5791 D742r Roanoke, Virginia, 1882 - 1912, Magic City of the New South by Rand Dotson 2007 University of Tennessee Press

929.103 Ev15a A To Zax A Comprehensive Dictionary for Genealogists & Historians by Barbara Jean Evans 1995 Hearthside Press

025.0692 M821o The Official Guide to Ancestry.com by George G. Morgan 2007 Ancestry Publishing

975.5 W357b Beyond Pocahontas her Heritage Continues by Sandra Waugaman 2008 Dietz Press

975.54251 R762j Jamestown's Story Act one of the Dream by Parke Rouse, Jr 2006 Dietz Press

917.52 F73r Rivers of America, Rivers of the Eastern Shore by Hulbert Footner 1944 Farrar & Rinehart

917.549 G98p Rivers of America, The Potomac by Frederick Gutheim 1949 Rinehart & Co

917.53 Ai47w We, the People The Story of the US Capital by The United States Capital Historical Society 1963

- 917.5 H273h Hippocrene Guide to the Historic Black South by James Haskins & Joanne Biondi 1993 Hippocrene Books
- 917.5 M175s The South and the Southerner by Ralph McGill 1963 Little, Brown & Co
- 917.68 F926s Strangers in High Places The story of the Great Smoky Mountains by Michael Frome 1966 Doubleday
- 917.5 W49o Old South The founding of the American Civilization by Thomas Jefferson Wertenbaker 1942 Charles Scribner's Sons
- 769.559755 Af27o The Obsolete Paper Money of Virginia Volumes 2 by Charles J. Affleck 1968 Virginia Numismatic Association
- 769.559755 Af27v The Obsolete Paper Money of Virginia Volumes 1 by Charles J. Affleck 1968 Virginia Numismatic Association
- Special Collections Audio Tape of Star City, Roanoke, VA Sung by Pete Murphy
Written by Don Muse & Steve Langston 2007
- 920.075 M322f Frock Coats and Epaulets by Alf J. Mapp, Jr. 1963 S.S. Barnes & Co.
- 917.69 F31k Kentucky A Guide to the Blue Grass State by WPA Sponsored by University of Kentucky 1939 Quinn & Boden Co., Inc.
- 929.1072 R994f Finding your Mexican Ancestors, a beginner's guide by George & Peggy Ryskamp 2007 Ancestry Publishing
- 917.53 G82w Washington Village & Capital, 1800-1878, 1879 -1950 (2 volumes) by Constance McLaughlin Green 1962 Princeton Press
- SC 917.5 O15c The Cotton Kingdom, A Traveler's Observations on Cotton & Slavery in the American States by Frederick Law Olmsted 1953 Alfred A. Knopf, Inc
- 927.309 E232C66m Moses Ezekiel, Civil War Soldier, Renowned Sculptor by Stan Cohen & Keith Gibson 2007 Pictorial Histories Publishing Co.
- 923.173 J359 K958m Mr. Jefferson's Women by Jon Kukla 2007 Published by Alfred A. Knopf
- 975.54251 W485c The Story of a Virginia Plantation Carter's Grove by Mark R. Wenger 1999 The Colonial Williamsburg Foundation
- 975.404 P589 Picturing West Virginia, A Century of Collection by the West Virginia State Archives 1905 - 2005 Published by the State of West Virginia 2005
- 975.591 L872bg - Looking Back (Historic Gainsboro) DVD 2007 by Cox Communications
Compilation of photos and moving pictures describing the history of the Gainsboro neighborhood in the City of Roanoke, Virginia, with commentary by community members
- 633.71 D757 Down In the Old Belt, Voice from the Tobacco South DVD -Documentary by Jim Crawford 57 minutes 2005
- 975.5791 H242g Greater Raleigh Court, a history of Wasena, Virginia Heights, Norwich & Raleigh Court by Nelson Harris 2007 History Press
- 320.9775 N844 Notes from the Sausage Factory by Barnie Day & Becky Dale 2005 Brunswick Publishing

- 780.92 M828c Chronicles of Stephen Foster's Family by Evelyn Foster Morneweck
1944 University of Pittsburgh
- 917.55 P349b The Blue Ridge Parkway by Foot, A Park Ranger's Memoir by Tim Pegram
2007 McFarland & Co
- 929.2 G692p Pioneers of the Virginia Bluegrass (and their descendants) by George
B. Gose 2007 Kegley Books
- 929.373 B631b Bounty and Donation Land Grants in British Colonial America by
Lloyd deWitt Bockstruck 2007 Genealogical Publishing
- 929.376902 H364f "First Census" of Kentucky 1790 by Charles B. Heinemann
1976 Genealogical Publishing
- 975.9 F659 Pioneers of Florida's First Coast Volume II by The Southern
Genealogist's Exchange Society 2006
- 929.2 Q48 M1410 Our Families Quesenberry with roots in Southwestern VA Volumes
1 & 2 by Betty Jo Quesenberry McDaniels 2005
- 929.2 M243f McQuilkin Family Pictorial Biography by D. E. McQuilken 1958
- 929.2 D182T737f Family History of Dameron, Nelms, Dickenson Compiled by William
M. Trippeer 2006
- 929.2 T737t The Trippeer Family Genealogy Compiled by William M. Trippeer
2004
- 929.2 F381H143s Saints Who Stayed to Build up Zion by Jeanette Farley Hall
2002
- 790 P27r Recreation as a Function of Government in Virginia by James E.
Pate 1953 William & Mary College
- 929.376102 K299m Miscellaneous Alabama Newspaper Abstracts Volumes 1 & 2 compiled
by Michael Kelsey, Nancy Graff Floyd & Ginny Guinn Parsons 1995 Heritage Books
- 929.3752 b217t Mt. Olivet Cemetery Baltimore, Maryland Volumes 1, 2 & 3 compiled
by John J. Winterbottom 1989 Family Line Publications
- 929.3755 H394I Henrico County, VA Land Patent Abstracts with some Plat Maps
Volumes 1 & 2
2004 by Bert Mayes & Selena Du Luc (Winner of the Don Mosher Memorial
Award)
- 929.375223 Somerset County Maryland Tax lists by Rebecca F. Miller 1992 Millers
Choice Genealogy
- 929.375232 T 593 Tombstones of Talbot County Maryland Volume 4 by Upper Shore
Genealogical Society of Maryland 1993
- 929.375234 T593 Tombstones of Queen Anne's County Maryland Volume 1 by Upper
Shore Genealogical Society of Maryland 1994
- 929.3755 W997m Wythe County, Virginia Marriages 1854 -1866 by Janie Dillon & Mary
B. Kegley 2007 Wythe County Genealogical and Historical Association
- 973.745568 M553c Civil War Records of Franklin County, Virginia 1861 -1865 by
Beverly Merritt 2007

- 973.745569 M553c Civil War Records of Henry County, Virginia 1861 - 1865 by Beverly Merritt 2006
- 973.7455 M533c Confederate Captains and Military Units Commonwealth of Virginia 1861 - 1865 by Beverly Merritt 2006
- 973.3455569 H24r Revolutionary War Pension Applications Henry, Patrick & Floyd Counties of VA by C. Leon Harris 2007
- 977.876 B279 Reprint of Goodspeed's 1888 History of Barry County 1971 Litho Printers
- 975.5723 W379s Saltville by Jeffrey C. Weaver in cooperation with The Museum of the Middle Appalachians 2006 Arcadia Publishing
- 929.208 W727pf Pioneer Families of Franklin County, VA by Marshall Wingfield 1992 Genealogical Publishing
- 929.09755 SL16b Virginia Slave Births Index Volumes 1 -5 Edited by Leslie Anderson Morales 2007 Heritage Books
- 929.2 C771c Cook Family Genealogy by Albert W. Cook, Jr. 2006
- 929.2 F982f Furrow Family History by Carson Furrow (bound 2007)
- 929.375223 D847so Parish of Somerset County MD by Ruth T Dryden 1987
- 929.375284 B684M Montgomery County MD Marriages 1796 - 1850 by Tressie Nash Bowman 1966
- 929.375223 D847t Somerset & Worcester Counties MD 1783 Tax List by Ruth T. Dryden 198(?)
- 929.375223 P871s Somerset County MD Coventry Parish Records Volume 1 1703 -1834 Volume 2 1800-1899 by Jody Powell 1993
- 920 K414s Simon Kenton His Life and Period 1755 - 1836 by Edna Kenton 1930 County Life Press
- 920.K41 C549s Simon Kenton, Kentucky Scout by Thomas D. Clark 1943 Little & Ives
385. N794h The Historic Railroad, A Guide to Museums, Depots and Excursions in the United States by John R. Norris & Joann Norris 1944 McFarland
- 282.755296 Ss24 St. Mary's: 200 Years for Christ, St Mary's Catholic Church Alexandria, VA 1795 - 1995
- 308 J35pr The Papers of Thomas Jefferson, Retirement Series Volume 4 June 1811 to April 1812 by J. Jefferson Looney Editor 2007 Princeton Press
- 640 H355s The Seasonal Hearth, women at home in early America by Adelaide Hechtlinger 1977 Overlook Press
- 917.5256 M694a Annapolis Visit, A Photographic Essay on Maryland's Ancient City by Mary Mitchell 1969 Barre Publishers
- SC917.55 C239h Historic Shrines of Virginia by W. E. Carson, Chairman of the Virginia Commission on Conservation & Development 1933
- 929.2 G765Sh49a Ancestor's Call, with a reprint of the Slave Narrative: Narrative of the Life of Moses Grandy by Eric Anthony Sheppard 2003 Diversity

Restoration Solutions, Inc

071.30496 H395b Bibliographic Checklist of African American Newspapers by Barbara K. Henritze 1995 Genealogical Publishing

277.5 M393 Masters & Slaves in the House of the Lord Race & Religion in the American South 1740-1870 by John B. Boles 1988 University Press of Kentucky

923.2 D66s Speakers & Clerks of the Virginia House of Delegates 1776 -2007 by Bruce F. Jamerson 2007

929.2 B381S115a Annie Laurie Beauchamp 1884-1965 Her Ancestors and Allied Families in Virginia, Maryland, Georgia, and Texas by Martha Strong Slater 2002 Gateway Press

P 917.55 V819ca Carry Me Back to Old Virginia Travel guide 1957

917.557 W252t Travel Tours out of Roanoke Through Southwest Virginia by WPA 1938

929.09747 D69n New York State Censuses & Substitutes by William Dollarhide 2005 Genealogical Publishing

975.5671 P851Le Lynchburg: A City Set on Seven Hills by Clifton Potter & Dorothy Potter 2004 Arcadia Publishing

975.5723 B996s Images of America Smyth County by Kimberly Barr Byrd & Debra J. Williams 2005 Arcadia Publishing

975.5723 B996sc Images of America Smyth County, Revisited by Kimberly Barr Byrd & Debra J. Williams 2005 Arcadia Publishing

929.3097 B675e Eastern Cherokee By Blood Volumes 1 - 5, 1906-1910 Transcribed from Court Records by Jeff Bowen 2008 Genealogical Publishing

929.3755 C899i An Index for the Culpeper Exponent (Newspaper) Volumes 30-49 1910-1930 Compiled by Robert A. Hodge 1982

929.357223 D847st Somerset County MD, Stepney Parish Records by Ruth T. Dryden 1988

975.5791 W896pa The Protective Agencies of Roanoke WPA project by Anne Worrell 1940

016.071 L346c Chronological Tables of American Newspapers 1690 - 1820 compiled by Edward Connery Lathem American Antiquarian Society & Barre Publishers 1972

017.5528 R272i Inside Loudoun, The Way it Was by Frances H. Reid 1986 Potomac Press

343.04 L41 Virginia Laws in Relation to Commissioners & Collectors of the Public Revenue 1882 Published by the Auditor of Public Accounts

353.9754 W52 West Virginia Blue Book 1939 & 1940 (2 volumes) Compiled by Charles Lively 1939 & 1940 Jarrett Press

385 L58h2 Handbook of American Railroads by Robert G. Lewis 1956 Simmons-Boardman Publishing

920.073 G953s Seven Wise Men of Colonial America by Richard Gummere 1967 Harvard

University Press

923.8773 B884C13j Jacob Bunn: Legacy of an Illinois Industrial Pioneer by Andrew Taylor Call 2005 Brunswick Publishing

929.2749 G286 Genealogies of New Jersey Families from the Genealogical Magazine of New Jersey Volumes 1 & 2 1996 Genealogical Publishing

929.37502 L567o Old Southern Bible Records Transcriptions of Birth, Deaths, and Marriages from Family Bibles, Chiefly of the 18th and 19th Centuries Compiled by Memory Aldridge Lester

929.375231 B434 Beneath These Stones Volume 2 Published by Upper Shore Genealogical Society of Maryland 1996

P 286.175579 R531 Roanoke Valley Baptist Association Annuals 1988 - 1993

P 366.1 R812v Virginia Text Book of Royal Arch Masonry 1949

P 929.2 H383 Scl9h Henderson Family Records by J Montgomery Seaver 1929 American Historical - Genealogical Society 1930

P 929.374879 IslN Naturalization Records 1802 - 1854 Somerset County, Pennsylvania compiled William L. Iscrupe 1979

P 929.3755 Am32x The 1787 Census of Virginia, Amelia County by Yantis & Love 1987

P 929.3755 B39wi Bedford County Virginia Index to Wills 1754 - 1830 by Mary Bondurant Warren 1995

P 975.583 H629f Historic Fincastle 1772 by Historic Fincastle Inc. 1976

SC 373.755791 L51y The General, Lee Junior High School 1947 & 1953 Yearbooks

SC 923.673 B81R249p Life of Captain John Brown by James Redpath 1860

P 286.175583 M61m Mill Creek Baptist Church History 1804 - 1954

P 549.9755 D567v2 Virginia Minerals and Rocks by R. V. Dietrich, Professor VPI 1960

P 553.46 L121m Manganese Deposits of the Sweet Springs District West Virginia & Virginia by Harry S. Ladd United States Dept of Interior 1944

P 929.2 St86V868s Thing Stringer Family & Kin Early Americans & Pioneers of Lawrence County, Mississippi by Alvin Ward Vogtle 1968

P 929.34102 G359p Poll Books C 1696 - 1872 A Directory to Holdings in Great Britain by Gibson & Rogers 1998

P 929.3755 G391c Giles County Virginia Census 1840 by James Douthat 1999 Mountain Press

P 975.5782 B782v Virginia & Virginians Giles County by Dr. R A Brock 198?

P 292.2 M126f Family of Wesley D McCann by McCann & McCann 1962

332.4973 R27s The Story of Civil War Money by Fred Reinfeld 1959 Sterling Publishing

332.4975 C868c Criswell's Currency Series Volume 1 Confederate & Southern State Currency 1957 Criswell publication

917.55 C189v Mark Benjamin Carey's Virginia 360 2007

929.3755 P687c 1820 Pittsylvania County VA Census by Mike K. Williams 1988 Mountain Press

929.3755 P687c 1850 Pittsylvania County VA Census by Mike K. Williams 1990 Mountain Press

920.075 Od8s Southern Pioneers in Social Interpretation by Howard W. Odum 1925 University of North Carolina Press

325.3 K172f Foundations of Colonial America Volumes 1 -3 by W. Keith Kavenaugh 1973 Chelsea House Publishing

975.56s C381h The Heritage of Charlotte County VA 1765 - 2007

975.5763 T219h Tazewell County Heritage Volume 2 1799 -2007

920.72 N843 Notable Women West of the Blue Ridge 1850 -1950 a project of the Colonel William Preston Chapter of the DAR 2008

Pam B. Young
Roanoke Public Libraries
Virginia Room
706 S Jefferson St.
Roanoke, VA 24016
(540) 853-2073

A Little Nostalgia...

STONE PRINTING COMPANY

In July 1883, J. P. Bell, a Lynchburg, Virginia printer and Edward L. Stone, one of his employees, decided to open a printing shop in Roanoke. They rented a small frame building on Commerce Street, the site now occupied by the Times-World Corporation. Samuel G. Fields of Abingdon, Virginia was placed in charge. Edward L. Stone was the printer; the other two employees a youth, Fleming R. Hurt, and "a boy to furnish the power." This shop was known as The Bell Printing and Manufacturing Company. Following Mr. Fields' death, in 1885, Mr. Stone was appointed manager. The plant was almost destroyed by fire in 1889.

In 1890, the work force had increased to 33 employees, eight times the original number. Larger working quarters were needed, and a year later, in 1891, the company leased the second and third floor of a three-story building on North Jefferson Street, across from Hotel Roanoke. Around 1891-92 the company name was changed to the Stone Printing and Manufacturing Company, and Edward L. Stone was named president.

In 1895 the building was enlarged by adding an exact duplicate to the side. This building, later known as the Stratford Annex, was occupied by the printing company until 1908 when the structure with the stone facade, familiar to many, was erected.

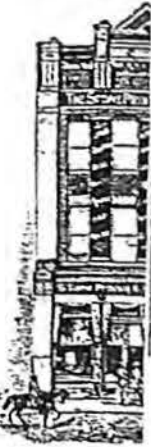
The twin brick buildings were torn down in 1931 to make way for the Norfolk and Western Railway General Office Building.

Submitted by Jean McGrady, 43 year employee of Stone Printing

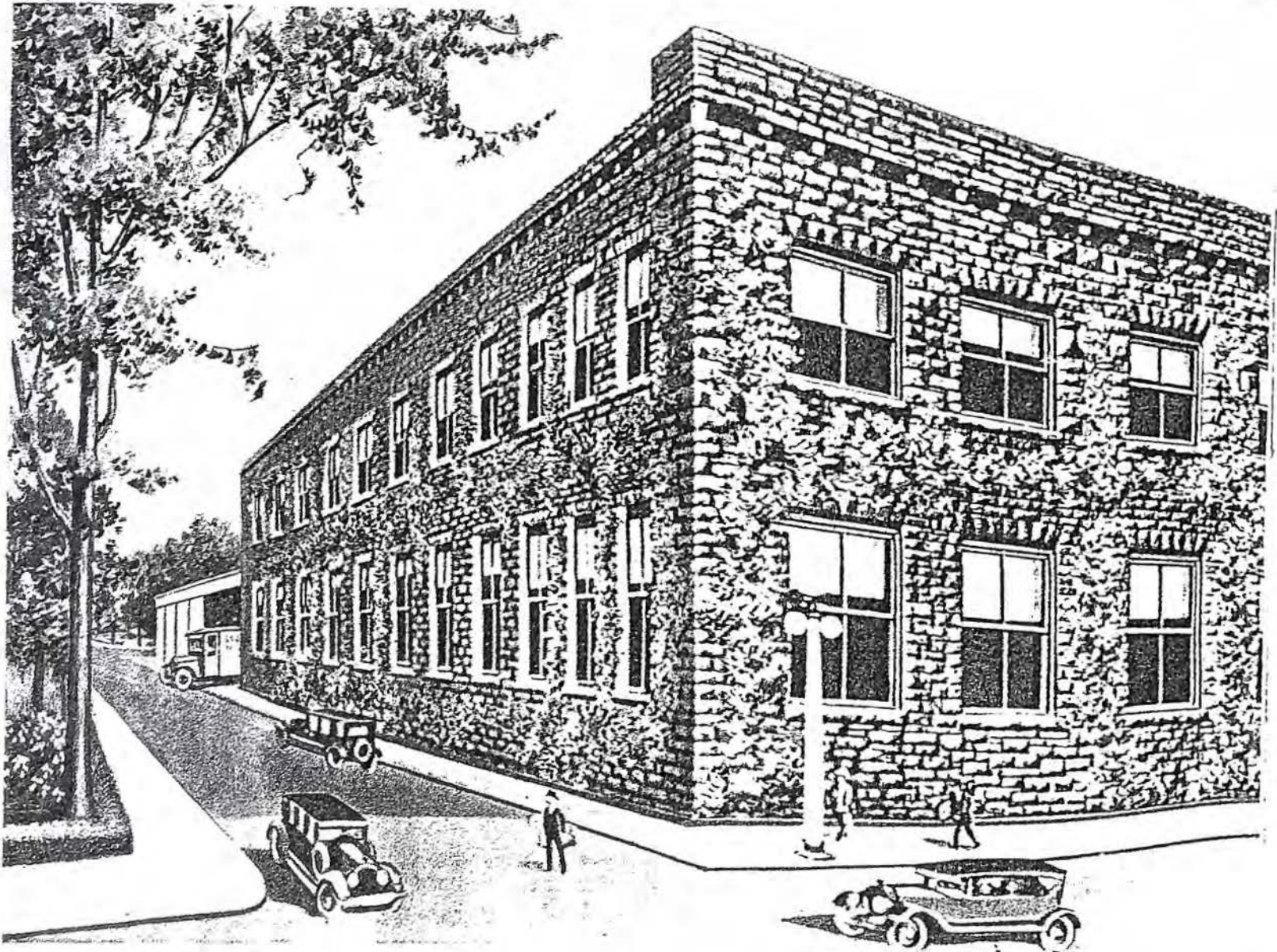
A STORY WITH



1883

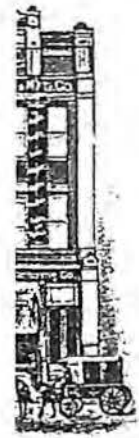


18



1

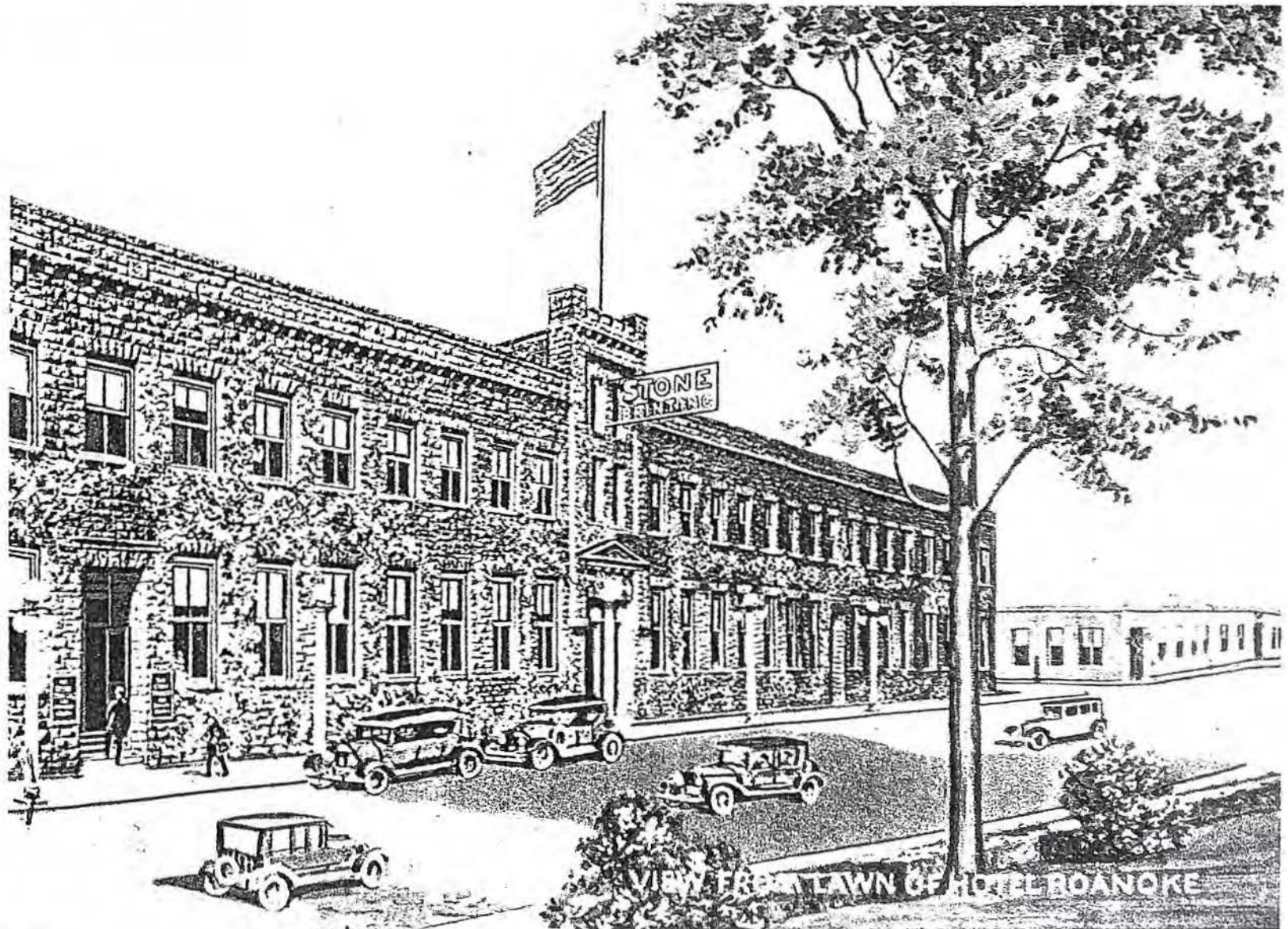
THOUT *Words*



1



1895



130

William Mead of Bedford County, Virginia

Deed Book 7 pages 472-473: Indenture 28 Feb 1785 William Mead of Bedford County conveys to Joel Cheetwood for sum 50 pounds 700a -more or lefs. "Beg. where Greers Line crosses Gills Creek, thence along Greers Lines South 60° W to Lynn Tree N 60° W 60 - p to W. O. N 87° W 78 p to Poplar, N 40° W, 136 p to Taylors line, thence along Crabtrees Line S 144 p to W. O., S 85° W 30 -32 pt to W. O. in Crabtrees Line, N 81° W 108 p to W. O., S 9° E 58 p to R.O., S 70° W 58 p to W. O. thence off 19° E 139 p to Chesnut Oak, S 62° E 43 p to R. O., N 78° E 176 p to pts, N 38° E 121 p to pts in other Line N 60° E 88 p to W. O. N 75° E 68 p to W. O., N 40° E 60 p to Fargasons Corner W. O., N 5° W to Gills Creek aforesaid thence up as it meanders to Beg." Appurtenances.

W. Mead

Memorandum of quiet pofsefsion

Recorded 28 Feb 1785

Deed Book 6 pages 54-55: Indenture ___ of 1778 William Mead to Joel Cheetwood Both of Bedford County for sum of 20 pounds 150a tract on north side Black-water River. "Beg. at Baley's corner Hickory on sd River, Thence along his line N 80 p to his Corner W. O. off N 26° E 40 p to W. O. in Peter Blankenship line thence along his line S 28° E 70 p to Poplar N 87° E 40 p to W. O. N 45° E 20 p to R. O. N 65° E 26 to Chesnut at the Mouth of fox Trap Branch and thence up river as it meanders to Beg." Appurtenances.

W. Mead

Memorandum of quiet pofsefsion

Recorded 25 May 1778

Deed Book 3 pages 168-169: Indenture 23 February 1768 William Mead conveys to Henry Taylor for sum 10 pounds 35a tract on south side Gills Creek. "Beg. at W. O. in Taylors line. Thence on Taylors line S 10° W 124 p to R. O. off N 51° W 22 p to a White N 43° W 2 p to W. O. and Thence N 87° E 80 p to First Station." W^m Mead

Memorandum of quiet and peaceable pofsefsion

Court February 23 1768

Deed Book 5 pages 103-104: Indenture 26 July 1773 William Mead of Bedford County to James Dilion of Pitsilvania County in Consideration sum Thirty five pounds paid and Receipt acknowledged. "Sells thre Hundred and Eighty Acres on Black water River in Bedford and Pitsilvania Counties and Bounded as follows To Wit, Begining at Blankinships Corner Hicory on South Side of Said River off North forty Degrees East forty poles to Millers Corner Chesnut so on Millers line North Eighty two Degrees East Eighteen poles to his Corner White Oak and North forty five Degrees East Eighty Six poles to his Corner Hickory thence off South Eighty four Degrees East Sixty Six poles to a Red Oak South fourteen Degrees East One Hundred and Twenty Six poles to - Belchers Corner thence on his line South Sixty two Degrees West Sixty four poles to his Corner poplar on Sd River thence Down and Crofsing to - Pointers on the South Side of Said River off South Thirty four Degrees West Two Hundred poles to pointers North Eighty four Degrees West Two - Hundred poles to Noland's Corner thence along his line North Nineteen Degrees East Seventy four poles to Said River and Down the Same and Crofsing to the Begining."

W. Mead

Memo Quiet and Peasable Pofsefsion.

Bedford County Court July 26 1773

(Note: From Copier, M. A. Barnes. This was copied as written in the actual volume known as Deed Book E 5, Bedford County, Virginia. It is believed the pause marks do not indicate a lack of survey description, but in fact the style of the surveyor.)

Mary Ann Barnes; 1204 Allison Drive; Rockville, Md 20851

Records of Coffin Maker Marion Thomas Hall, Floyd County

Name	Gender	Age/ DOB	Name of parents or Spouse	Date	County/Notes	Price	Relationship Ad
N/N	Child		Chafin, Gilbert	2/20/1911	Pd. By Epperly, Posie	\$5.50	
N/N	Child		Vest, A. P.	2/28/1911		\$5.50	
Whitenack, Jonathan				4/25/1911		\$13.50	
N/N	Wife		Vest, Peter	5/2/1911	Docia I. Hale	\$13.50	
N/N	Child		Cole, Tiny	6/8/1911		\$5.45	
N/N	Child		Blackwell, W. M.	6/9/1911		\$6.00	
N/N	Child		Gearhart, Melvin	6/13/1911		\$6.00	
N/N	Child		Jones, Jasper	10/5/1911		\$3.00	
N/N	Son		Boone, L.L.	10/7/1911	Garrah S. Boone	\$13.50	
N/N	Child		Blackwell, W. M.	10/15/1911		\$4.00	
Boyd, Mat	ordered by		Boyd, John	1/8/1912		\$12.59	
N/N	Child		Oty, Charley	1/27/1912		\$13.50	
N/N	Child		Bowers, Kyle	1/29/1912		\$4.75	
McNeal, Bettie	ordered by		McNeal, Henry	2/10/1912		\$11.00	
Yearout, James				2/13/1912		\$13.00	
Smith, John			Smith, Ellen	2/21/1912		\$15.00	
N/N	Child	2/8/1912	Hall, Letcher	3/4/1912	Margie Marie Hall	\$4.00	
N/N	Wife		Sowers, W. Taylor	3/12/1912		\$13.50	
Conner, Jacob	ordered by		Poff, S. M.	3/9/1912		\$14.10	
N/N	Son		Suples, Joseph	3/19/1912		\$13.50	
Likens, David				3/28/1912		\$14.00	
Basham, Mary Ellen	ordered by		Hatcher	5/22/1912		\$13.50	
N/N	Child		Hoback, James	5/31/1912		\$6.00	
Howard, Albert			Howard, Thomas	6/12/1912		\$13.50	
N/N	Child		Vest, A. P.	7/3/1912		\$4.00	
N/N	Child		Sowers, Taylor	7/4/1912	Arrinda Epperly	\$5.00	
N/N	Son		Smith, Ellen	10/26/1912		\$13.00	
Conner, D. P.(Daniel Peter)				11/14/1912		\$13.50	
N/N	Child		Wimmer, W. M.	11/26/1912		\$4.00	
N/N	Sister		Booth, Cal	12/8/1912	Booth, W. C.	\$13.00	
N/N (Grace Lee)	Wife		Hales, Calib	12/11/1912		\$13.50	
Epperley, Ruby	ordered by		Epperley, W. M.	1/8/1913		\$14.00	
N/N	Wife		Walton, James	2/11/1913	R. Martin (Mary J Lancaster)	\$3.50	
N/N	Child		McNeal, Charley	2/19/1913	Vest, L. I.	\$3.00	
N/N	Child		Lee, Roy	3/3/1913		\$3.00	
N/N (Sarah Elizabeth	Mother		Clower, Frank	3/5/1913		\$13.75	
Board, Jacob			Conner, Moses	3/13/1913		\$13.50	
N/N	Child		Epperley, Garland	3/19/1913		\$4.00	
N/N	Son		Buggs, Robert	3/26/1913		\$13.50	
N/N	Son		Duncan, Lawyer	3/31/1913		\$3.25	
N/N	Daughter		Summers, James	4/10/1913		\$4.00	
Jones, Larry Genie	Wife	Age 18	Jones, Jasper	4/25/1913		\$13.50	
N/N	Son		Lawrence, German	6/4/1913		\$3.25	
N/N	Daughter		King, Charles M.	6/9/1913		\$4.00	
McNeal, Weldon	Son		McNeal, James	6/18/1913		\$7.50	
Boone, John				7/2/1913		\$15.00	
Calloway, Philis (col. Female)	Mother	111y6m15d	Calloway, W. M.	7/9/1913	Montgomery Co.	\$15.00	
Edwards, Dora A.	Wife		Edwards, George	7/14/1913	Edwards, John	\$15.00	
Thomas, Lawrence Webber	Child		Thomas, L. A.	7/27/1913		\$5.25	
Corell, Susan				8/20/1913		\$15.00	
N/N	Child		Muncy, Rice	8/29/1913		\$5.25	
Ferguson, Tempie		91y 4m 9d	(Martin Cemetery)	9/3/1913	(DC# 21704 Richmond, Va.)	\$15.00	
Walters, Nellie	Child		Walters, John	10/9/1913	Montgomery Co.	\$5.00	
Smith, Peter				10/28/1913	Susan Smith & Walter Conner	\$15.00	
Conner, Kasmus				11/7/1913		\$15.00	
Blackwell, Warter (Walter)				12/8/1913	Blackwell, Isaac Rt#4 FCVA	\$15.00	
N/N	Son		I. W. or J. W. Collins	1/26/1914		\$2.00	
Calaway, Mary	ordered by		Calaway, Wm.	2/26/1914	Montgomery Co.	\$15.00	
Caraway, Thomas (col)				3/14/1914		\$15.00	
Meadows, Lena Beatrice	Child		Meadows, Harvey Reed	3/17/1914	White Female	\$6.00	
Howard, Lue (col)				6/6/1914		\$15.00	
Conway, Millie	ordered by		Claytor, H. D.	7/23/1914		\$15.00	
Payne, Lewis	ordered by		Payne, Beldora	7/28/1914	Montgomery Co.	\$15.00	
Vest, Charlott (Shockley)	ordered by		Vest, Peter R.	8/7/1914		\$15.00	
McNeal, Kishie	ordered by		McNeal, Charlie	9/14/1914		\$15.00	
Wilson, Adeline				9/29/1914		\$15.00	
N/N	Son		Lawrence, German	10/2/1914		\$3.25	
Lucas, Virginia Gay	Child		Lucas, Daniel	10/2/1914		\$5.50	
Sumpter, Joseph	ordered by		Sumpter, Bernice	11/2/1914		\$15.00	
Vest, Delilah A.	ordered by		Vest, S. A.	11/9/1914		\$15.00	
Chafin, Alma	Wife		Chafin, C. O.	12/8/1914		\$15.00	
Lampie, Nrs.	ordered by		Cummings, J. H.	12/28/1914		\$15.00	
Spangler, John	ordered by		Spangler, J. H.	1/8/1915		\$15.00	
Clower, Callare Wade	Son		Clower, William H.	3/23/1915		\$4.25	
N/N	Child		Alderman, Thomas	3/23/1915		\$6.50	
Conner, Almer	ordered by		Conner, Joseph	4/5/1915	Martha Almer	\$15.00	
Craighead, Robert	ordered by		Craighead, James R.	4/22/1915	Milburn Whitenack	\$15.00	
Martin, Emanuel L. J.	Son		Martin, Rufus	5/7/1915		\$5.50	
Poff, Coy Raymond	Son		Poff, Hugh L.	5/11/1915		\$4.25	
Gurrant, Mattie S.	Wife		Gurrant, John R.	7/18/1915		\$15.00	
N/N	Daughter		Epperley, B. T. (J.)	8/14/1915		\$4.50	
N/N	Son		Blackwell, W. T.	10/9/1915		\$5.50	
Lawrence, Oliver Ray	Son		Lawrence, Alonzo	11/1/1915		\$4.00	
N/N	Daughter		Wimmer, Robert Pink	11/4/1915	Montgomery Co.	\$4.00	
N/N	Daughter		Beckheimer, Moses L.	11/15/1915		\$4.00	
N/N	Child		Whitenack, Lorenza	12/1/1915		\$4.00	
N/N	Inf/ Dau		Muncy, Rice	1/2/1916		\$4.25	

Gearhart, David W.	ordered by	Gearhart, Curtis	4/28/1921	\$30.00
Clower, Joseph A.	ordered by	Clower, Archie W.	5/5/1921	\$30.00
Rakes, Cynthia E.	Wife	Rakes, F. J.	5/14/1921	\$30.00
N/N	Inf. Son	Blackwell, Wm. J.	5/23/1921	\$9.00
Bugg, Watkins M.	ordered by	Buggs, Robert	7/7/1921	\$31.00
N/N	Inf. Dau	Conner, James Albert	7/14/1921	\$9.00
Jennings, Lawrence Allen	Son	Jennings, Chester	8/4/1921	\$11.00
Sisson, James E. (El)	ordered 03 May	Sisson, Loula & Sisson, A. P.	8/5/1921	\$32.00
N/N	Daughter	Whitenack, J. M.	8/11/1921	\$7.50
Sutphin, Fannie (white)	ordered by	Anderson, John & Jones, Alice	9/18/1921	\$30.00
N/N	Inf. Son	Woolwine, Luther O.	9/28/1921	\$10.50
N/N	Inf. Son	Howard, William T.	11/14/1921	\$9.00
N/N	Inf. Dau	Conner, Otis J.	12/14/1921	\$9.00
Eanes, Sarah Elizabeth	ordered by	Eanes, Edward L.	12/27/1921	\$30.00
Walters, Permilia E.	ordered by	Clower, A. F.	1/2/1922	\$30.00
N/N	Inf. Son	Wilson, Emmett D.	1/8/1922	\$9.00
N/N	Inf. Son	Lawrence, J. E.	1/8/1922	\$9.00
Light, Elizabeth J.	ordered by	Light, E. B.	2/3/1922	\$30.00
Conner, Booker J.	Child	Conner, R. E. (Ras)	3/2/1922	\$25.00
N/N	Inf. Son	Hale, Calib E.	3/7/1922	\$7.00
Lawrence, Ernest Lee	Child	Lawrence, H. T.	3/7/1922	\$9.00
Sutphin, Roelina	Wife	Sutphin, Wm. R.	3/9/1922	\$30.00
Maxey, Mary E.	ordered by	Maxey, Samuel L.	3/10/1922	\$30.00
Vest, Rebecca	Wife	Vest, G. W.	3/20/1922	\$30.00
Hungate, Thomas	ordered by	Hungate, Sarah	5/13/1922	\$30.00
Sowers, Dillard W.	ordered by	Bowers, Troy W.	8/3/1922	\$30.00
Vest, John E.	ordered by	Vest, Andy W. (Bud)	8/6/1922	\$30.00
Reed, Elizabeth	ordered by	Lane, G. W.	9/7/1922	\$30.00
Alderman, Sarah	Wife	Alderman, Johnson	10/10/1922	\$30.00
N/N	Son	Howard, William T.	12/19/1922	\$6.00
Howard, Cager	ordered by	Howard, James	12/24/1922	\$29.00
N/N	Inf. Son	Anderson, George K.	12/26/1922	\$9.00
N/N	Son	Jones, Mason	2/3/1923	\$10.00
King, Harless	Son	King, C. M.	2/10/1923	\$11.00
Lawrence, Helen Celestine	Daughter	Lawrence, Brainard	2/21/1923	\$11.00
Conner, Earsel Whitfield	Son	Conner, Brainard	2/21/1923	\$15.00
Jones, Arnold Lee	Son	Jones, Swanson	2/27/1923	\$10.00
McDaniel, Hattie	Wife	McDaniel, Thomas	3/7/1923	\$30.00
Cummins, Dorsie	Son	Cummins, Harlie	3/18/1923	\$30.00
N/N (Sarah Boone Vest)	Wife	Vest, W. M. (William Madison)	3/26/1923	\$28.00
Hadge, Sally A.			5/17/1923	\$30.00
Vest, Edmon	Son	Vest, Archie P.	5/21/1923	\$12.00
N/N	Inf. Dau	Lawrence, Ernest	8/1/1923	\$8.00
Cunningham, Malinda	Wife	Cunningham, Robert	7/6/1923	\$27.00
Tate, Rosa	Daughter	Vest, George	8/23/1923	\$30.00
Anderson, John	ordered by	Kyle & Family	12/3/1923	\$33.00
Vest, Samuel A.	ordered by	Vest, Sadie	12/4/1923	\$39.00
Woolwine, Ida Meg	Wife	Woolwine, Robert	1/6/1924	\$30.00
Poff, Marshall	Son	Poff, C. W.	1/9/1924	\$10.00
Graham, Joseph	ordered by	Graham, Hortense & Willie	1/9/1924	\$41.00
Duncan, Louisa	ordered by	Mosby, Trigg	2/11/1924	\$25.00
N/N	Inf. Son	Guerant, John	2/28/1924	\$6.50
Wilson, Yelfra A. Francis	ordered by	Wilson, Wm. R.	3/6/1924	\$45.00
Meadows, Henry	ordered by	Price, John	3/6/1924	\$33.00
Vest, John Eugene	Son		3/11/1924	\$33.00
Collins, George W.	ordered by	Collins, Magie	5/23/1924	\$45.00
McNeil, Henry	ordered by	McNeil, Charlie & S. E.	5/24/1924	\$33.00
N/N Twin Sons	Son	Claytor, E. O.	6/28/1924	\$6.30
N/N	Inf. Son	Claytor, H. S.	8/28/1924	\$6.30
Wade, Silas	ordered by	Clower, Frank	8/9/1924	\$29.00
Howery, Nannie	ordered by	Hawley, R. G. & Howery, Jeff	9/14/1924	\$41.00
Dickerson, G. Riley	ordered by		10/4/1924	\$32.00
Austin, Hester	ordered by	McNiel, Charlie C.	11/4/1924	\$35.00
Cole, Alingil (Abigail Vest Cole)	ordered by	Cole, H. V. & Cole, S. L.	12/9/1924	\$35.00
Iddings, H. B.	ordered by	Vest, V. W.	12/13/1924	\$35.00
Angle, Elizabeth F.	ordered by	Angle, W. L.	12/20/1924	\$60.00
Sowers, Ann	ordered by	Bower, Troy	1/3/1925	\$30.00
N/N Hall	Inf. Child	Hall, Leonard H.	1/22/1925	\$9.00
Vest, Adie Anomia	ordered by	Vest, David W.	2/18/1925	\$57.50
Price, Ellie V.	ordered by	Price, W. J.	2/28/1925	\$35.00
N/N	Daughter	Conner, Otey	4/17/1925	\$8.00
Martin, Mollie	ordered by	Martin, George W.	5/28/1925	\$35.00
N/N infant	Daughter	Howard, Ballard	6/3/1925	\$6.30
Conner, Docia	ordered by	Conner, J. F.	7/7/1925	\$35.00
Vest, R. B.	Son	Vest, Ray	7/10/1925	\$21.00
Board, Henry	ordered by	Board, H. R.	7/26/1925	\$75.00
Sumner, F. Marion	W/M	Purchased by Sumner, L. B.	9/15/1925	\$75.00
Smith, S. Catherine	W/F	Ordered By Smith, J. W.	10/8/1925	\$75.00
Bishop, Harley Cecil	W/M	s/o Bishop, H. C.	10/31/1925	\$9.00
Poff, John D	W/M	Purchased by Poff, Elsie	11/11/1925	\$35.00
McDaniel, Shields	B/M	Purchased by McDaniel, George	11/18/1925	\$26.25
Conner, Wm. Floyd	W/M		12/28/1925	\$35.00
Hall, Emaline	W/F	buyer Hall, J. W.	1/7/1926	\$47.50
Basham, George T.	W/M (abt 1849)	buyer Epperley, M. G.	1/9/1926	\$35.00
Epperley, Elmon Delsy	W/M	buyer Turner, Harlet	1/19/1926	\$52.50
Turner, Cain	B/M (abt 1857)	Conner, Rifton	1/30/1926	\$35.00
N/N infant	W/M		2/8/1926	\$9.45

Boyd, Melvina	W/F		buyer Boyd, J. T.	2/8/1926		\$35.00
Austin, Owen	W/M		s/o Austin, Wm.	2/13/1928	Floyd Co.	\$12.00
Cole, Cynthia	W/F		ordered by Cole, Kyle	2/21/1926	Basham, Va	\$35.00
Epperly, Wm. T.	W/M		buyer Epperley, Jane	3/8/1926	Buried at Red Oak Grove	\$35.00
Conner, Wm. H.	W/M		Conner, Mandy	4/5/1926	Copper Hill, Va	\$49.00
Conner, Cline	W/M child		Conner, R. E.	4/8/1926	Pilot, Va.	\$14.00
Poff, John H.	W/M		buyer Mary Poff & Albert Poff	4/5/1926	Otey, Va	\$46.00
Sumpter, Sarah C.	W/F		buyer Sumpter, T. E.	4/28/1926	buried in Floyd Co.	\$50.00
Gibson, John	B/M		buyer Poff, M. J. Gibson, Rena	4/29/1926	Montgomery Co.	\$36.00
Conner, Carmel L.	W/M child		Conner, R. E.	5/7/1926	Floyd, Co.	\$35.00
Wimmer, Emery Lane	W/M child		Wimmer, Samuel	5/16/1926	Pilot, Va.	\$21.00
Spangler, Noah C.	W/M		Spangler, L. M.	6/8/1926	Floyd Co.	\$90.00
Helm, John	B/M		Stuart, Robert & Helm, Ruth	7/17/1926		\$35.00
N/N infant	Son		Eanes, Cleveland	7/18/1926	Pilot, Va. Buried in Floyd Co.	\$9.00
N/N infant	Son		Underwood, Aaron	7/18/1926	Basham, Va buried in Floyd Co.	\$7.35
Lucas, Minnie Florence	W/F Wife		Lucas, W. V.	8/20/1928	Floyd County	\$90.00
Stump, Lincoln Blain	W/M Son		Stump, Charlie L.	8/24/1926	Copper Hill, Va	\$21.00
N/N infant	W/F Child		Link, Herbert	9/3/1926	Floyd County	\$9.50
Smith, Perydine	W/F	Age 74	buyer McNeil, Mary	9/13/1926	Floyd County	\$36.00
Vest, Chester W.	W/M		buyer Vest, Nellie	9/19/1926	Pilot, Va	\$36.00
Reed, Lonia	W/F	Age 64	buyer Reed, J. D.	11/13/1926	Floyd County	\$75.00
Hale, Wm. F.	W/M	Age 77	buyer Hale, Willie	11/23/1928	Floyd County	\$46.00
Lively, Charlie	B/M	Age 64	buyer Lively, Ellen & Argabright, W. R.	12/15/1926	Montgomery County	\$38.50
Light, J. O.		Age 70	buyer Light, Groves & A. L.	1/31/1927	Floyd County	\$46.00
Vest, Frank T.	W/M	Age 30	pd. By McNeil, Samuel	3/5/1927	Basham, Va	\$36.00
Basham, Sarah E.	W/F	Age 73	ordered by Gearhart, A. C.	3/8/1927	Floyd County, Va	\$36.00
Snuffer, Fry	black	Age 75	buyer Snuffer, Frank	5/24/1927	Montgomery County	\$36.00
Kinnett, Nancy		Age 80	by Kinnett, David & Duncan, J. W.	7/3/1927	Floyd County	\$36.00
Eanes, Mary E.	W/F	Age 71	by Eanes, W. E. & Robert	8/4/1927	Floyd County	\$36.00
Aldridge, Samuel H.		Age 74	by Aldridge, Vima	11/26/1927	Floyd County	\$36.00
Board, Elmira		Age 77	by T. L. Board	12/21/1927	Basham, Va	\$60.00
Correll, Nannie	W/F	Age 52	by Correll, Henry & sons	2/8/1928	Pilot, Va	\$50.00
Vest, Juanie	W/F	Age 76	by Vest, Andy M.	2/21/1928	Floyd County	\$36.00
Bishop, Roy T.	W/M	Age 20	buyer Bishop, Jeff	3/28/1928	Riner, Va	\$90.00
Hale, Herman	W/M	Age 21	by Hale, Henry G.	3/31/1928	Floyd County	\$62.00
Conner, Mary M.	W/F	Age 75	by Conner, Peter	4/19/1928	Floyd County	\$55.00
Craighead, Sarah E.	W/F	Age 93	by Whitenack, J. M.	5/4/1928	Pilot, Va	\$60.00
Sowers, Luinda A.	W/F	Age 76	by Sowers, H. D.	5/20/1928	Floyd County	\$46.00
Graham, Mary	W/F	Age 76	by Graham, W. E.	5/28/1928	Floyd County	\$46.00
Poff, Nellie Mae	W/F	Age 33	by Poff, Albert	5/28/1928	Pilot, Va	\$36.00
Anderson, Kyle	W/M	Age 52	by Anderson, Almer	6/4/1928	Basham, Va	\$36.00
Hodge, Martha S.	W/F	Age 74	by Hodge, J. H.	6/22/1928	Pilot, Va	\$36.00
Howery, Irvin Adal	W/M	Age 12	by Howery, W. J.	7/9/1928	Floyd County	\$51.00
Martin, Bertha	W/F	Age 57	by Martin, George W.	7/28/1928	Pilot, Va	\$90.00
Sisson, Leula	W/F	Age 35	by Lawrence, Alonzo	7/29/1928	Basham, Va	\$60.00
Sumpter, Alden		Age 19	by Sumpter, T. E.	9/6/1928	Basham, Va	\$50.00
Price, Ellie R.	W/F	Age 58	by Price, John H.	9/14/1928	Floyd County	\$60.00
Conner, James W.	W/M	Age 60	by Conner, Lenora & Alfred	9/28/1928	Floyd County	\$37.00
Sowers, J. Reese	W/M	Age 33	Sowers, O. W.	10/16/1928	Pilot, Va	\$100.00
Kingrea, Charles L.	W/M	Age 71	Kingrea, Martha A.	10/24/1928	Floyd County	\$60.00
Bower, Troy W.	W/M	Age 39	Bower, Mrs. T. W. & Aggie	11/20/1928	Floyd County	\$100.00
Martin, Mary E.	W/F	Age 3 wks	Martin, John R.	11/24/1928	Montgomery County	\$13.60
Stillborn Son	W/M	Son	Burke, John R.	12/2/1928	Floyd County	\$8.00
Aldridge, Nina Jane	W/F	Age 75	Aldridge, Ferrald M.	1/9/1929	Floyd County	\$36.00
Howery, George Wilson	W/M	Age 59	Howery, W. J. & Martin, A. R.	2/6/1929	Floyd County	\$46.00
Wimmer, Ruby J.	W/F	Age 8	Ordered By Wimmer, Ezra P.	2/8/1929	Floyd County	\$50.00
Stillborn Son (Brown ?)	W/M		ordered by Hall, Ira P.	2/11/1929	Floyd County	\$7.00
Vest, Letha	W/F	Age 6	Vest, W. B.	2/16/1929	Floyd County	\$30.00
Price, Ira J.	W/M	Age 72	Price, W. J.	2/22/1929	Floyd County	\$38.00
Howard, Bertha V.	W/F	Age 2	Howard, Charlie	2/26/1929	Floyd County (Buried in the Howard Cem. Riner)	\$25.00
Vest, George D.	W/M	Age 68	pd. By Vest, Lorenza	2/27/1929	Floyd County	\$100.00
Collins, I. M.	W/M	Age 90	Collins, E. H.	4/7/1929	Floyd County	\$40.00
Board, Nancy G.	W/F	Age 55	pd. By Board, Rush	4/8/1929	Floyd County	\$100.00
Richards, Samuel R.	W/M	Age 89	pd. By Richards, Chet & Lee	4/29/1929	Pilot, Va	\$60.00
Clower, James B.	W/M	Age 78	by Angle, S. W.	5/26/1929	Pilot, Va	\$75.00
Conner, J. H. W.	W/M	Age 76	by Conner, James	5/31/1929	Floyd County	\$36.00
Martin, Harvey S.	W/M	Age 88	by Martin, Bertie & P. F.	6/15/1929	Floyd County	\$37.00
Austin, Viola P.	W/F	Age 25	by Austin, P. E. pd. By Austin, John	6/18/1929	Floyd County	\$60.00
Whitlock, Louise	W/F	Age 3	by Whitlock, Bernard	6/19/1929	Montgomery County	\$85.00
Akers, Emma J.	W/F	Age 72	by Akers, Ballard P.	6/25/1929	Montgomery County	\$60.00
Conner, Nora	W/F	Age 56	by West, John & A. P.	6/29/1929	Floyd County	\$36.00
Vest, Eliza Ann	W/F	Age 70	by Hall, J. L.	8/20/1929	Floyd County	\$106.00
Woodward, Elizabeth	W/F	Age 75	by Woodward, G. W.	8/24/1929	Floyd County	\$50.00
Light, Hubert	W/M	Age 25	By Light, H. J.	9/23/1929	Pilot, Va	\$36.00
Edwards, Nellie	Female	1y10m	by Edwards, G. B.	10/14/1929	Montgomery County	\$25.00
Wirt, W. W.	W/M	Age 83	by Wirt, N. W.	11/17/1929	Montgomery County	\$49.00
Still Born Son	W/M		Lawrence, Stanley E.	1/1/1930	Floyd County	\$14.00
Weaver, Mary A.	W/F	Age 95	by Martin, A. C.	1/11/1930	Pilot, Va.	\$80.00
Muncy, Martha	W/F	Age 97	by Lovem, W. P.	1/12/1930	Pilot, Va.	\$57.00
Martin, Cynthia M.	W/F	Age 79	by Martin, L. R.	1/13/1930	Floyd County	\$39.00
Lawrence, Sarah F.	W/F	Age 57	by Lawrence, J. W. & Sons	2/5/1930	Floyd County	\$100.00
Vest, Elsie J.	W/F	Age 61	by Vest, J. H. pd. Vest, Jacob H.	2/21/1930	Floyd County	\$63.00
Still Born Son	Male		Price, Herman J.	2/25/1930	Floyd County	\$7.00
Price, Ruth	W/F	Age 18	by Price, Herman J. & John	2/25/1930	Pilot, Va	\$60.00
Gillenwater	W/M	Age 39	by Boone, C. E.	2/26/1930	Pilot, Va	\$33.00
Lucas, Priscilla	W/M	Age 86	By Lucas, D. S.	3/2/1930	Floyd County	\$55.00
Wickham, Mary A.	W/M	Age 49	by Wickham, C. O.	3/9/1930	died in Roanoke City	\$106.00
Martin, James M.	W/M	Age 81	by Martin, Rufus M.	3/23/1930	Floyd County	\$36.00
Still Born Son	W/M		Sutphin, Eli	4/11/1930	Montgomery County	\$8.00

Dobbins, Ballard C.	W/M	Age 86	by Dobbins, W. H.	4/18/1930	Floyd County	\$55.00
Still Born Daughter	W/F		Bartel, Lawrence / Bartel, Morgan D.	5/3/1930	Floyd County	\$5.00
Hale, Emmet K.	W/F	Age 52	Hale, G. W.	6/3/1930	Floyd County	\$53.00
Ashworth, Martha	Female	Age 84	Underwood, A. B. & Ashworth, Green	6/13/1930	Montgomery Co	\$36.00
Conner, Nannie A.	W/F	Age 59	Conner, Gillie B.	6/18/1930	Floyd County	\$100.00
Cunningham, James Robert	W/M	Age 2	s/o Andrew W. Cunningham	6/23/1930	Montgomery Co	\$9.00
Conner, Rifton E.	W/M	Age 28	by Conner, Mrs. Rifton	7/4/1930	Floyd County	\$80.00
Link, J. S.	W/M	Age 68	Link, Liona	7/7/1930	Floyd County	\$80.00
Conner, Stella	W/F	Age 16	Conner, Giles	7/18/1930	Pilot, Va	\$43.00
Hatcher, Dora M.	W/F	Age 39	by DeWitt, James S.	7/29/1930	Copper Hill, Va	\$61.50
Bowers, Junier	W/M	Age 3	s/o Bowers, Clay	7/30/1930	Floyd County	\$30.00
Eanes, Ward C.	W/M	Age 8m 13d	s/o Eanes, Jasper	8/11/1930	Floyd County	\$12.00
Vest, Sarah M.	W/F	Age 74	Vest, James B. & McNeil, Ernest	8/17/1930	Floyd County	\$39.00
Hale, J. W.	W/M	Age 80	by Hale, G. W. & J. L.	10/17/1930	Floyd County	\$53.00
Hall, Jessie W.	W/M	Age 88	by Walters, G. M.	10/21/1930	Floyd County	\$49.00
Still Born Daughter	W/F		d/o Clower, Letcher	10/22/1930	Floyd County	\$7.00
Board, John M.	W/M	Age 61	by Vest, C. B.	11/16/1930	Floyd County	\$43.00
Conner, Mary E.	W/F	Age 82	by Conner, Alfred L.	12/18/1930	Floyd County	\$53.00
Braady, Nancy J.	W/F	Age 84	Woodward, G. W.	1/5/1931	Floyd County	\$100.00
Anderson, Kittie	W/F	Age 72	Anderson, C. R. & James, S. T.	1/10/1931	Floyd County	\$39.00
Still Born			Martin, Robert C.	1/17/1931	Floyd County	\$7.00
Howery, Jonathan	W/M	Age 75	by Howery, Frank	2/9/1931	Floyd County	\$54.00
Claytor, Albert E.	B/M	Age 12	Claytor, Harvey D.	2/12/1931	Floyd County	\$36.00
Vest, Rosa B.	W/F	Age 69	Vest, Clyde C.	2/21/1931	Floyd County	\$80.00
Smith, William H.		Age 75	Martin, R. H.	3/16/1931	Montgomery Co	\$37.00
Beagle, Willie A.	W/M	Age 62	Beagle, Mrs. W. A.	6/6/1931	Floyd County	\$53.00
Conner, Mitch	W/M	Age 83	by Willis, George	8/18/1931	Floyd County	\$37.00
Woodward, Herbert	W/M	Age 6	s/o Woodward, W. E.	8/21/1931	Floyd County	\$33.15
Still Born Son			Earles, Marvin R.	9/9/1931	Montgomery Co.	\$13.00
Link, Burrel	W/M	Age 10m	s/o Link, Henry	9/11/1931	Floyd County	\$12.00
Martin, Samuel William	W/M	Age 85	by Martin, Glenvar	9/14/1931	Floyd County	\$106.00
Martin, Helen Elizabeth	W/F	Age 13	d/o Martin, R. H.	9/30/1931	Montgomery Co.	\$55.00
Naff, Mary J.	W/F	Age 82	by Naff, B. F.	10/15/1931	Floyd County	
Vest, Louisa	W/F	Age 82	Whitenack, O. W.	11/9/1931	Floyd County	\$51.00
Hale, G. W.	W/M	Age 20	Hale, George V.	12/20/1931	Floyd County	\$43.00
Slusher, George A.	W/M	Age 51	Slusher, Ray	12/25/1931	Montgomery Co., Riner	\$80.00
Vest, David W.	W/M	Age 71	Vest, Cleaphis	1/4/1932	Floyd Co. Check	\$43.00
McGhee, Dora A.	W/F	Age 47	McGhee, Ben	1/16/1932	Floyd Co., Copper Hill., Greysville	\$33.00
McGhee, Robert B.	W/M	Age 68	Werton, K. K. 2 coffins 5.00 & 34.00	1/24/1932	Floyd Co., Copper Hill.	\$5.00
Vest, Clyde C.	W/M	Age 31	Vest, Ras L.	1/29/1932	Floyd - Pilot	\$75.00
Peris, Virginia	W/F	Age 70	Argabright, J. W. & Lucas, D. S.	2/15/1932	Floyd - Copper Hill hauling \$1.50	\$32.00
Webb, Alma	B/F	Age 53	Webb, P. D.	4/12/1932	Floyd	\$12.00
Angle, Mary L.	W/F	5days	Angle, J. F., father	4/15/1932	Floyd - Simpsons	\$10.50
Hadge, C. C.	W/F	Age 83	Hadge, J. E.	5/7/1932	Montgomery Co	\$75.00
Poff, Hubert Hoyd	W/M	2y7m	Poff, Lake	6/1/1932	Floyd - Montgomery	\$30.00
Craghead, Giles E.	W/M	Age 64	Craghead, Emma	6/4/1932	Floyd - Pilot	\$95.00
McAlexander, Hazel Lee	W/F	19mo	McAlexander, Gen. W	6/25/1932	Floyd - Basham	\$8.00
Sutphin, Nanie	W/F	Age 74	Sutphin, Clara & Spangler, J. H.	6/28/1932	Montgomery - Pilot	\$77.50
Thompson, Francis A.	W/F	20 mo	Thompson, John R. & Cummings, L. A.	8/13/1932	Floyd - Sowers, Va	\$25.00
Trail, George J.	W/M	Age 88	Trail, John	8/13/1932	Floyd Co.	\$35.00
Martin, Cleapatry	W/F	Age 75	Martin, James R.	8/10/1932	Floyd - Otey, Va	\$35.00
Conner, Mary L.	W/F	Age 65	Conner, W. H.	9/20/1932	Montgomery - Pilot	\$57.00
Beckdehimer, Charles G.	W/M	Age 68	Beckdehimer, Mrs. C. G. (Algela)	10/31/1932	Montgomery - Pilot	\$85.00
Martin, Clarence Wade	W/M	Age 34	Martin, Andrew J.	11/14/1932	Floyd Co.	\$85.00
Conner, Giles A.	W/M	Age 58	Conner, Lura	12/6/1932	Floyd Co.	\$35.00
Conner, W. Haden	W/M	Age 83	Conner, J. W., Luis, Lewis	12/17/1932	died in Giato, WV	\$75.00
Conner, Peter	W/M	Age 84	Conner, Willard	1/25/1933	Floyd - Check	\$50.00
Lawrence, Virginia Sue	W/F	3y3m	Lawrence, H. T.	1/28/1933	Floyd - Check	\$25.00
Martin, L. Rufus	W/M	Age 82	Burk, A. Jack	1/29/1933	Floyd - Basham	\$35.00
Trail, Lucy Angeline	W/F	Age 77	Trail, John V.	2/22/1933	Pilot, Va	\$37.00
Conner, Melvina	W/F	Age 68	Conner, Oscar	3/6/1933	O. S. Conner, Pageton, WV	\$78.00
Hale, Sarah R.	W/F	Age 76	Hale, W. E.	4/1/1933	Floyd - Check	\$52.50
Cole, Sarah J.	W/F	Age 82	Cole, Pleasant	4/19/1933	Floyd - Basham	\$37.00
Walters, Victoria	W/F	Age 78	Aldridge, C. H. & Weeks, Profit A.	4/28/1933	Floyd - Check	\$40.00
Howard, Laura May	W/F	3y8m	Howard, Ballard, father	5/21/1933	Montgomery Co. - Riner	\$30.00
Vest, Cecil Starland	W/M	1y9m	Vest, Elemeul G. father	6/30/1933	Floyd - Pilot	\$9.00
Hale, Virginia Maibell	W/F	Age 54	Hale, Harvey L. husband	7/24/1933	Floyd - Check	\$55.00
Vest, Mabel E.	W/F	1m25d	Vest, Alton	10/3/1933	Floyd - Pilot	\$21.50
Cole, Dallis L.	W/M	Age 61	Cole, Dallas & Cole, Mrs. D. L.	10/19/1933	Floyd - Check	\$55.00
Anderson, Charles R.	W/M	Age 77	Burke, A. J., purchased	12/4/1933	Floyd - Basham	\$34.00
Cole, Plesant	W/M	Age 91	Cole, Tammie	12/7/1933	Floyd - Basham	\$37.00
Light, Scipio	W/M	Age 68	Light, Brownlow, purchaser	1/16/1934	Floyd - Simpsons	\$75.00
Poff, Mary	W/F	Age 83	Poff, Robert & Albert	1/18/1934	Floyd - Otey, Va	\$35.00
Dickerson, Margie K.	W/F	12 days	Dickerson, William	1/30/1934	Montgomery Co. - Riner	\$7.50
Harris, Louis Harvey	W/M	12 hour	Harris, Willis	2/13/1934	Montgomery Co. - Riner	\$6.25
Conner, Frank	W/M	Age 72	Conner, Gillie B., purchaser	3/14/1934	Floyd - Check	\$30.00
Conner, Angeline V.	W/F	Age 45	Conner, Floyd O., purchaser	3/24/1934	Montgomery Co. - Pilot	\$60.00
UnNamed Child Still Born	W/M	Still Born	Conner, Raymond	3/31/1934	Floyd - Check	\$11.50
Vest, William W.	W/M	Age 79	Vest, Alice, purchaser	4/5/1934	Floyd - Check	\$38.50
Otey, Charles Q.	W/M	Age 77	Otey, Hattie	4/6/1934	Floyd - Pilot	\$50.00
Conner, Moses E.	W/M	Age 67	Conner, George B.	5/6/1934	Floyd - Check	\$80.00
Eanes, Sarah Sirmida	W/F	Age 78	Eanes, Burreth & Gracie	8/13/1934	Floyd - Pilot	\$70.00
Conner, Sarah Ann	W/F	Age 80	Conner, S. Willard, buyer	11/6/1934	Floyd - Copper Hill	\$40.00
Woolwine, Martha B.	W/F	Age 76	Gearhart, A. C., buyer	11/18/1934	Floyd - Check	\$45.00
Dickerson, Sarah C.	W/F	Age 47	Dickerson, Andy T.	12/8/1934	Montgomery Co.	\$45.00
Flinchum, Amos Dick	W/M	Age 48	Flinchum, Faith Hattie & Epperly, A. P.	12/16/1934	Montgomery - Pilot	\$80.00
Vest, inf.	W/M	22hrs	Vest, Truman, father	12/21/1934	Floyd - Otey, Va	\$12.00
Martin, James R.	W/M	Age 79	Huff, J. P. & Wickham, J. W.	12/31/1934	Floyd - Otey, Va	\$37.00
Epperley, Rosa Jane	W/F	Age 81	Epperley, W. D. (William Daniel)	12/31/1934	Floyd - Pilot	\$48.00

(Jennings)			Muncy, Shirley; father	1/19/1935	Floyd - Pilot	\$5.00
Muncy, Infant	WM	4hrs	Hall, Matilda	2/7/1935	Floyd Co.	\$37.00
Hall, Ira D.	WM	90y1m15d	Bishop, Nancy May	2/25/1935	Montgomery Co. - Riner	\$40.00
Bishop, Adison J.	WM	Age 74	pd by Sheriff Hyston	2/27/1935	Floyd - Check	\$37.00
Martin, Wilmoth R.	WF	Age 88	Simpson, W. C.; pd Conner, George L.	3/11/1935	Floyd - Copper Hill	\$41.00
Conner, Mary Della	WF	Age 45	Hale, Ceibert	3/17/1935	Floyd - Copper Hill	\$12.00
Hale, James Edward	WM	Age 11d	Pension Funeral EX	4/30/1935	Floyd - Check	\$37.00
Collins, Eva Sarah Elizabeth	WF	Age 73	Finchum, Gordon & Rosie	5/28/1935	Montgomery - Pilot	\$41.00
Zink, Marinda	WF	Age 79	King, Clarence W.; father	6/23/1935	Floyd - Simpsons	\$12.00
King, Infant	WF	Infant	Poff, Lula E.	8/2/1935	Floyd - Pilot	\$80.00
Poff, Henry W.	WM	Age 77	Conner, Otey	8/28/1935	Floyd - Pilot	\$17.00
Conner, Hermell Alpha	WF	Age 15 m	Graham, Mrs Dock (Marion Conner Graham)	10/11/1935	Floyd - Pilot	\$55.00
Graham, Dock Coy	WM	Age 48	Light, Lenora b. 31 Dec 1854	10/15/1935	Floyd - Pilot	\$37.00
Light, Eliza Boyd	WM	Age 80	King, Irvin N.	11/11/1935	Floyd - Copper Hill	\$46.50
King, Phiney	WF	Age 22	Poff, Archie	11/21/1935	Floyd - Copper Hill	\$80.00
Poff, Asa	WM	Age 78	Johnson, Martha E.	11/27/1935	Floyd - Pilot	\$55.00
Johnson, Arthur James	WM	Age 74	Cole, Ernest	12/12/1935	Floyd - Check	\$60.00
Cole, Henry Valentine	WM	Age 82	Underwood, Howard	12/13/1935	Floyd - Basham	\$36.00
Underwood, Aaron	WM	Age 52	Vest, Octava	12/19/1935	Floyd - Check	\$36.00
Vest, Andy (Pierce)	WM	Age 66	Smith, Daniel	12/20/1935	Floyd - Copperhill	\$50.00
Smith, Addie	WF	Age 28	Conner, Floyd O.	5/8/1935	Floyd - Pilot	\$52.00
Carroll, Robert Henry	WM	Age 79	Whitenack, O. W.	12/29/1935	Floyd - Check	\$40.00
Whitenack, Hallie Ann	WF	Age 80	Carr, Ginnie	12/29/1935	Floyd - Pilot	\$75.00
Carr, Henry Wise	WM	Age 79	Wilson, Lucy	1/14/1936	Floyd - Copper Hill	\$55.00
Wilson, Catherine	WF	Age 97	Pd. Conner, Ras & Epperley, B. J.	1/22/1936	Floyd - Pilot	\$48.00
Epperley, Wm. Daniel	WM	Age 82	Ferris, J. L.	2/1/1936	Floyd - Copper Hill	\$37.00
Ferris, John	WM	Age 82	Eanes, Grace & Lula	4/23/1936	Floyd - Pilot	\$67.00
Eanes, Burrell H.	WM	Age 85	Akers, Mattie & Ballard	5/8/1936	Montgomery - Pilot	\$80.00
Bishop, Nancy May	WF	Age 53	Clower, Landon	6/12/1936	Pilot, Va	\$85.00
Clower, Arena Jane	WF	Age 82	Conner, Booker	6/26/1936	Floyd Co.	\$55.00
Conner, Lura Kathryn	WF	Age 51	Vest, Shirley E.	7/8/1936	Floyd - Pilot	\$75.00
Vest, Annie Hazel	WF	Age 37	Jennings, Chester & Wall	8/1/1936	Montgomery Co.	\$49.00
Jennings, Mary	WF	Age 87	Carrell, Paul	8/8/1936	Montgomery - Pilot	\$52.00
Carrell, Garrett W.	WM	Age 18	Cunningham, Andrew Milton (Wilton)	8/17/1936	Montgomery - Riner	\$9.00
Cunningham, Clark	WM	3/30/1938	Martin, Isaac Irvin	8/27/1936	Floyd - Check	\$15.00
Martin, Mary Ann	WF	5.5 mo	Bartlet, T. J.	9/28/1936	Floyd - Copper Hill	\$52.00
Conner, Elsie Isabell	WF	Age 75	Sowers, Addie E.	11/5/1936	Floyd - Basham	\$75.00
Sowers, Posie Lee	WM	Age 52	Hall, Ellemmel	12/28/1936	Floyd - Check	\$60.00
Hall, Isabelle Jane	WF	Age 83	Woolwine, Huston	1/7/1937	Montgomery - Harless	\$55.00
Woolwine, Lee	WM	Age 49	Conner, Henry W.	1/7/1937	Floyd - Check	\$75.00
Conner, Sarah R.	WF	Age 78	Nolley, J. E b. 27 May 1884	2/2/1937	Floyd - Pilot	\$67.00
Nolley, Mary E. (Wright)	WF	Age 87	Vest, A. W.	3/8/1937	Floyd - Otey, Va	\$55.00
McNiel, Fannie K.	WF	near 100	s/o Conner, Lawson	3/10/1937	Floyd - Copper Hill	\$12.75
Conner, Ursel D.	WM	2 d	McNiel, Mrs. Banks	3/15/1937	Floyd Co.	\$60.00
Epperley, Noah Lee	WM	Age 54	Flinchum, Garden	3/20/1937	Montgomery - Pilot	\$72.50
Flinchum, Martha	WF	Age 79	Cole, C. R. & Raymond	3/27/1937	Floyd - Forest, Va	\$60.00
Cole, Tempy (Lawrence)	WF	Age 79	Whitenack, L. H.	3/31/1937	Floyd - Check	\$40.00
Whitenack, Lorena W.	WF	Age 74	s/o Underwood, Elmer pd by A. B.	4/8/1937	Montgomery - Basham	\$13.50
Underwood, Stillborn	WM	Inf.	Eanes, John M.	4/19/1937	Floyd - Check	\$75.00
Eanes, Rosabell Ann	WF	Age 71	Martin, Peter J.	5/21/1937	Montgomery - Christiansburg	\$67.00
Clower, John H.	WM	Age 78	Gardner, Harvey A.	7/7/1937	Montgomery - Riner	\$15.00
Gardner, Billie Clark	WM	7m13d	Gardner, Harvey A.	7/13/1937	Montgomery - Riner	\$15.00
Gardner, Bettie Gene	WF	7m19d	Reirson, Bertha L.	7/14/1937	Floyd - Check	\$55.00
Rierson, John C.	WM	Age 83	Underwood, Nash & A. B.	8/8/1937	Blacksburg	\$15.50
Underwood, Curtis Eugene	WM	Age 1y	Vest, J. Noah Charge to Estate.	10/28/1937	Floyd - Pilot	\$60.00
Vest, Floyd	WM	Age 84	Hungate, George W.	1/20/1938	Floyd - Basham	\$32.00
Hadges, Geo. Thomas	WM	Age 75	Finchum, Jesse; estate	2/6/1938	Montgomery - Pilot	\$75.00
Flinchum, Gordon	WM	Age 81	Price, Bertha & Wm., estate	3/6/1938	Floyd - Pilot	\$55.00
Price, John H.	WM	Age 65	Link, David W.	3/22/1938	Floyd - Pilot	\$60.00
Link, Lucie M.	WF	Age 70	Stump, Blain	4/4/1938	Floyd - Pilot	\$45.00
Stump, Wm. Floyd	WM	Age 82	Beckelheimer, Mrs. Halman	4/14/1938	Montgomery - Pilot	\$180.00
Beckelheimer, Anderson	WM	Age 63	Linkous, J. R.	6/11/1938	Montgomery - Vicker	\$39.00
Linkous, Ona Francis	WF	Age 78	Gearhart, A. C.	9/13/1938	Floyd - Check	\$48.00
Gearhart, Nancy Jane	WF	Age 87	Austin, Phillip E & Sons	9/23/1938	Floyd - Basham	\$60.00
Austin, Dela Adline	WF	Age 65	Walters, James Kyle	9/30/1938	Roanoke Air Port	\$56.75
Walters, Dochia May	WF	Age 54	Hale, Roy, father	10/3/1938	Floyd Co.	\$5.00
Hale, Stillborn	WF	Inf.	Moran, Troy; father & Moran, S. L.	11/9/1938	Floyd - Pilot	\$6.00
Moran, Stillborn	WF	Inf.	Bell, Carl & Carrie	12/11/1938	Floyd Co.	\$40.00
Bell, Mary Jane	WF	Age 79	Barker, A. G. & Donald	12/16/1938	Montgomery - Blacksburg	\$10.00
Baker, Ralph Lee	WM	Age 9d	Poff, Vance	1/6/1939	Floyd - Copper Hill	\$16.00
Poff, Clione Jean	WF	Age 5m 16d	Jones, Swanson	4/2/1939	Floyd - Basham	\$50.00
Jones, Willie Alis	WM	Age 76	Vest, J. Noah & Light, H. T.	4/21/1939	Floyd - Pilot	\$61.50
Vest, Mary Jane	WF	Age 84	Stump, Blane, Laula & Roscoe	5/20/1939	Floyd - Pilot	\$58.00
Stump, Sarah	WF	Age 78	Shady, Elva	6/24/1939	Floyd - Pilot	\$5.50
Shady, No Name	WM	Inf.	N/N	6/30/1939	Floyd - Pilot	
Still Born	?	Inf.	Smith, Ida; Maxey, Samuel & McNiel, Samuel	6/30/1939	Montgomery - Pilot	\$36.00
Smith, Samuel Henry	WM	Age 81	Palmer, Edward	8/14/1939	Montgomery - Shawsville	\$6.50
Palmer, Still Born	WM	Inf.	Spangler, Frank R.	12/13/1939	Montgomery - Pilot	\$10.25
Spangler, Doris Ann	WF	12hrs	McNiel, S. E.	12/21/1939	Floyd - Pilot	\$60.00
McNiel, Mary	WF	Age 79	Spence, Kyle; father	2/11/1940	Floyd Co.	\$7.00
Spence, Still Born	WF	Inf.	Conner, Hanford	3/18/1940	Floyd - Pilot	\$22.50
Conner, Margret Aldene	WF	Age 2y 7m	Vest, James Noah	3/27/1940	Floyd - Pilot	\$60.00
Vest, Lattie (Lottie Ellen Light)	WF	Age 58	Conner, Brainard	5/27/1940	Roanoke Co.	\$50.00
Conner, James Alfred	WM	Age 58	Vest, Warren P.	5/29/1940	Floyd - Check	\$17.00
Vest, Willie Gene	WM	Age 2m	Iddings, Biltha	6/10/1940	Floyd - Pilot	\$60.00
Iddings, James Wm.	WM	Age 83	Poff, Sherman Roscoe	2/1/1941	Floyd - Simpsons	\$18.50
Poff, Burton Edward Clark	WM	Age 3m	Jennings, Chester	3/20/1941	Montgomery - Pilot	\$60.00
Poff, Aubry Dale	WM	Age 24	Basham, Amhirst	3/25/1941	Floyd - Basham	\$47.00
Basham, James H.	WM	Age 83				

Link, Billy Sheldon	W/M	Age 3d	Link, Alvin	5/2/1941	Floyd - Check	\$14.00
Martin, George W.	W/M	Age 79	Martin, John R.	6/9/1941	Montgomery - Pilot	\$60.00
Houchins, Abe	W/M	Age 69	Houchins, Cobre	9/15/1941	Floyd Co.	\$50.00
Gray, W. Bin	W/M	Age 84	Gray, Mrs. Matilda P.	12/3/1941	Floyd - Check	\$42.00
Conner, Gillie B.	W/M	Age 79	Conner, Hugh	2/7/1942	Floyd - Check	\$70.00
Janey, Still Born	W/M		s/o Janey, Nelson Lee	2/11/1942	Floyd - Pilot	\$14.00
Eanes, John M.	W/M	Age 82	Eanes, Dora	3/25/1942	Floyd - Check	\$70.00
Kingrea, Samuel J.	W/M	Age 5 m	Hungate, Mrs. Julia	5/3/1942	Floyd - Basham	\$16.50
Claytor, Still Born	B/M		s/o Claytor, James	6/15/1942	Floyd - Copper Hill	\$7.00
Stump, Lula	?/F	Age 51	Stump, Roscoe	8/22/1942	Pilot	\$45.00
Hungate, George W.	W/M	Age 82	Sowers, John	5/5/1943	Floyd - Pilot	\$50.00

These are the records of Marion Thomas Hall of Floyd County, VA. He was a coffin maker and kept records very meticulously. His grandson, Everett Hall, who is from Christiansburg, VA is interested in genealogy has given these to be used to help people doing research in this area. He has been taking a class taught by Kathy Calvert, who also teaches at Auburn High School. In addition she teaches a genealogy class at night in Floyd County. She handed the records to Judy Blackwell who has passed them on to VAN.

Signed: .

Judith G. Blackwell

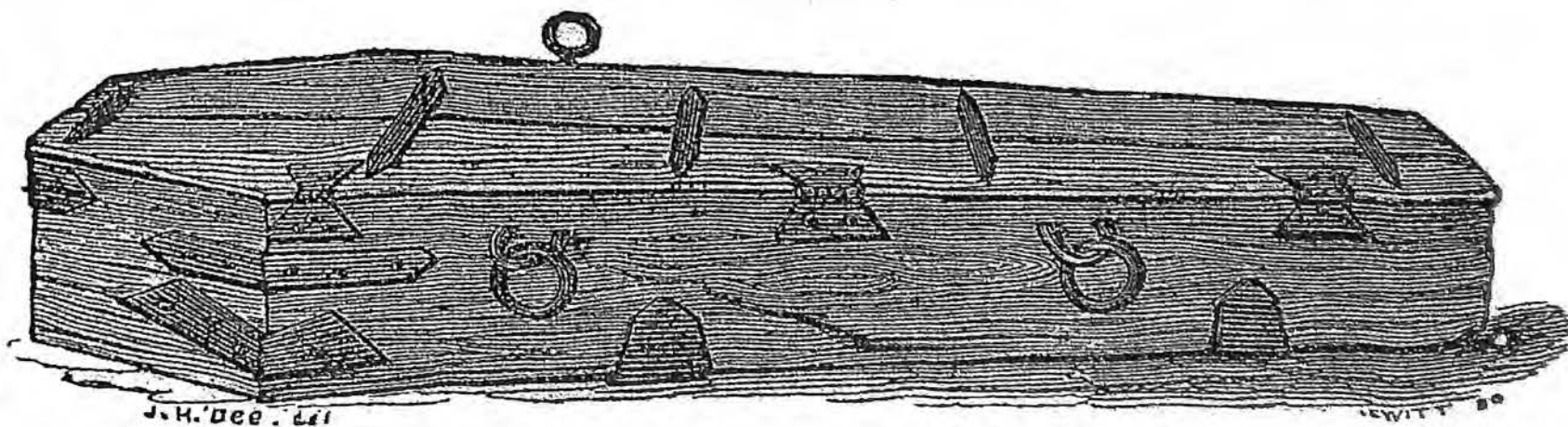
Judith G. Blackwell (Judy)

February 3, 2008

860 Stonewall Road, NE

Floyd, VA 24091-2716

jgcb@sw.va.net



AFRICAN AMERICAN ANCESTRY

Patsey Blankenship, Daughter of Hillery of Giles Co., VA

In trying to piece together the following puzzle of a purposefully forgotten piece of history I have determined that Hillery Blankenship of Giles County, Virginia had a daughter named Martha (Patsey) born around 1810. She would be one of the daughters born 1800 to 1810 which appear with Hillery on the 1810 Giles County census.

In the recounting of the history of these Giles County Blankenships, I have come to the conclusion that Patsey is one of the persons I truly admire. Rather than living her life to satisfy the norms of antebellum society, she instead intentionally chose a life of certain hardship. Her stubborn courage, and unwavering determination to live her life as she pleased, is surely an indication of her Blankenship heritage. She may have been unable to marry the man she loved but her love for her children should be legendary in our family. She fought the legal powers of her day to keep her children close to her, and even though she lost in court, she later manipulated the justice system to have one of her sons returned to her.

Patsey Blankenship first shows in Giles court records in an entry in Giles Order Book 1833-1835, page 283, dated June 28, 1837, reading: "It is ordered that Isaac Epling, Overseer of the Poor, bind to Leland Vass, Charles Blankenship [the word orphan marked through] a free boy of color, son of Patsey Blankenship until he arrives at the age of 21 years".

A year later on, Monday, June 26, 1838, Patsey appeared in court with Joseph Canterbury questioning the legality of an "indenture of apprentice" which the Overseers of the Poor had used to "bind" her son, Charles, to Leland Vass. The original indenture, dated June 1, 1838 is preserved at the Virginia State Archives. It states that Charles was aged "five years, ten months, a free boy of color", and would dwell with Vass "to the age of twenty one years" to "faithfully, honestly and obediently serve his said master". On August 27, 1838 the court gave the opinion that the indenture was valid.

Leland Vass died in 1843, and on March 28, 1843 John McClaugherty, the executor of the Vass estate, appeared in court: "having intimated his intention of transferring the indenture of apprentice binding Charles Blankenship, a mulatto boy aged 10 years in August next, and a bastard child of Patsey Blankenship, to Mary Vass, widow of Leland Vass".

However the court did not agree and Charles was "bound" to Isaac Fry with the stipulation that "Fry is to learn [sic] the boy the wagon-making trade and when he

attains the age of 15 is to pay the mother whilst he is in the service of the said Fry after that period until the last year of his services the sum of \$5 annually and for the last year to pay the said Charles the sum of \$50". A year later on March 26, 1844, the indenture to Fry was cancelled and Charles was bound to Patsey's friend Joseph Canterbury. Patsey could once again have access to her son.

Patsey Blankenship shows up in the 1840 census, with an older woman aged at least 50, living in the midst of the Vina [the name would later be spelled Viney] family with several of her own mulatto children. Although records of the Overseers of the Poor indicate that Milly was being supported by Captain James Stafford during the early 1840s, I believe that Stafford allowed Milly to remain in the home of her daughter.

The Vina/Viney's were one of the few families of free Blacks living in Giles County at that time. Even though they were not slaves laws still forbade the mixing of the races, so marriage would have been impossible. The Virginia law against interracial marriage was still in effect until 1967.

In Patsey's household in 1840 were three boys and a girl, all under age ten, listed as "free colored persons". These were the four mulatto children listed in the June 5, 1837 records of the Giles County Overseers of the Poor, reading: "Thomas Kirk is [ordered] to take four mulatto children who are now at the late dwelling house of Hilery Blankenship dec'd - his grandchildren, and keep them until they can be bound out." [Giles Co. His. Vol. II]

The free Blacks many times had it worse than their brothers and sisters held in the bondage of slavery. They had no one to care for their needs and yet finding employment was nearly impossible. Occasionally they could find work in dangerous occupations but even then the pay was minimal, otherwise they engaged in the most menial work. Some of Patsey's children were listed as fishermen.

The names of some of Patsey's children are known. In a preface to the 1834 Giles Personal Property Tax list are the names of all free "mulattoes" in the county, included are: Charles Blankenship of New River, Henderson Blankenship of Sugar Run, and Nancy Jane Blankenship also of Sugar Run, all under the age of 16. The 1836 and 1844 list of free "mulattoes" included: Charles Blankenship of Walker Creek, Nancy Jane Blankenship of Walker Creek, Henderson Blankenship of New River, William A. Blankenship of New River, and James A. Blankenship of New River. Nancy Blankenship appears in the 1860 Giles census listed as a mulatto washer-woman, aged 28, her children are: Rebecca, William L., and Sarah E. Blankenship.

The following Giles court record appears on May 11, 1857 - "It appearing to the satisfaction of the court that Henry Blankenship is a free man of color, it is ordered that

he be registered as such by the Clerk of this Court, when a full description of the said Blankenship is furnished to him". This record may refer to Henderson Blankenship.

A Giles "freedman" marriage record dated April 17, 1866 for Augustus Viney, age 29, and Clara Daugherty states that his parents are James Viney and Patsey Blankenship. The marriage took place at the home of Mark Canterbury. Clara, age 23, was a widow, the daughter of Sally (no last name).

James Viney was born in the early 1790s, the son of Rachel Viney. Lists "of all free Negroes and Mulattoes with the County of Giles" were prepared by the court for each year from 1816 to 1864. In 1816 and 1817 Rachel was living "on New River at Philip Peters' place". Two decades later, on March 27, 1837 Philip Peters is listed in Giles Court records as the administrator of Hillery Blankenship's estate. By 1818 Rachel Viney and her family are shown in tax records to be living on "New River at A. Johnston's place".

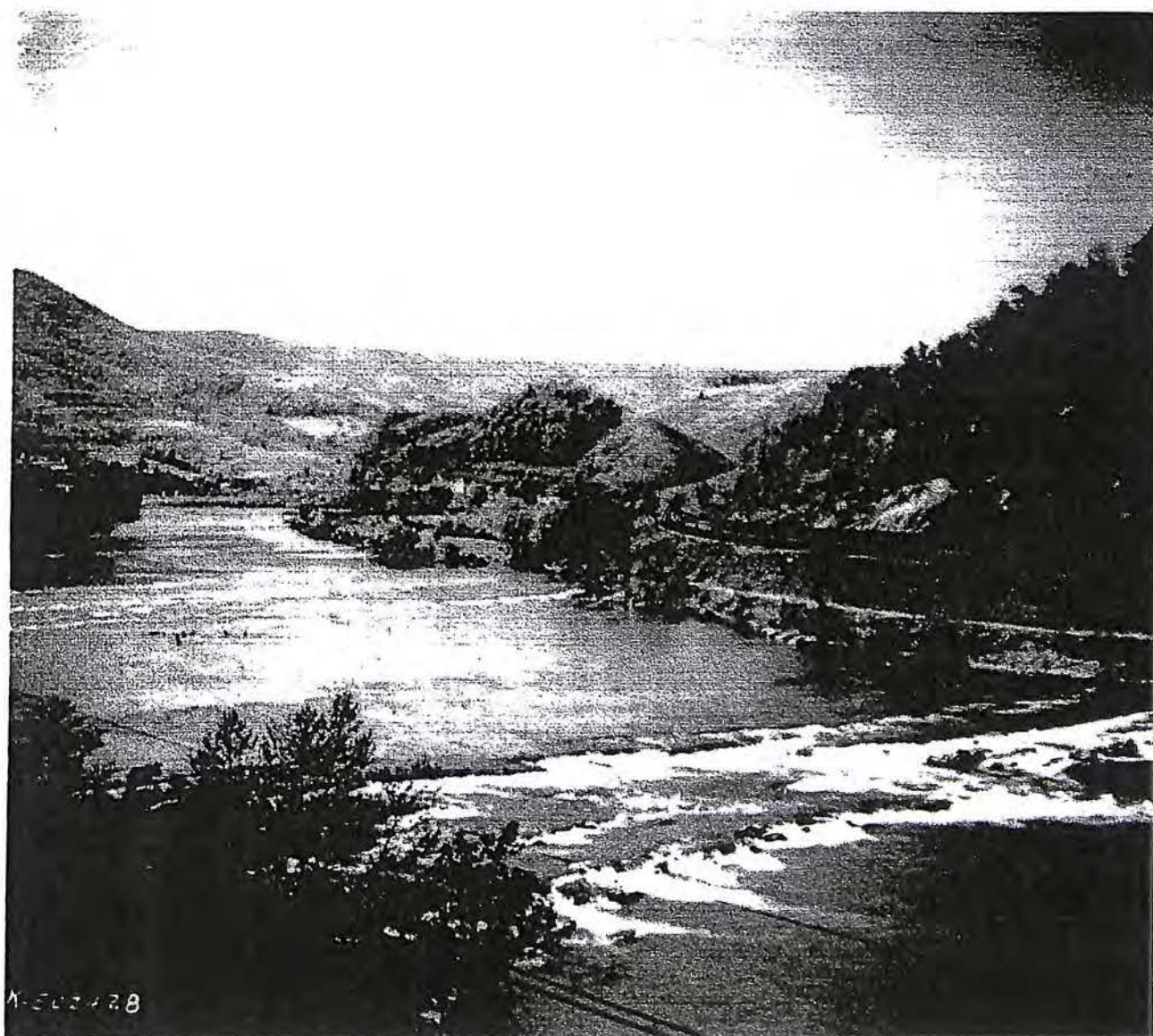
The will for James Viney was presented at the Giles County November, 1862 court [original will on file at Giles Court House]. A portion of the will reads: "I do hereby direct the whole [estate] to be sold to the highest bidder for cash and the moneys thereof arising from said sale to be equally divided between Lusinday, my wife, and her two boys Andrew and Ballard, and Augustus Viney and Sarah Viney".

A Giles Court record dated January 28, 1828 regarding the opening of a new road from Clover Bottom on Bluestone to Rich Creek was signed by Hilery Blankenship. The proposed directions for the road indicate that it would pass through "James Vina's field and through a corner of Daniel Wray's field", it further states that "the said road will run through the lands of John McClaugherty, James & Santy Vina, Daniel Wray, Col. Snidow and John Snidow, and if it should cross the branch near Wray's it would run through the land of Hilery or Stephen Blankenship. The said McClaugherty, Wray and Vina give their consent for the said road to pass through their lands".

The following Giles County Deed is found in Deed Book D, pages 150-152: "This 28th day of August 1832 Daniel Wray and his wife of the County of Scott and state of Virginia, hath for \$58 paid by Santy Vina and James Vina, do give, grant, bargain and sell to the said Santy Vina and James Vina, three parcels of land all adjoining and being in the Big Spring Branch water of New River, the first piece being part of a survey of 52 acres patented to Hilery and Arthur Blankenship, twenty six acres of the said survey was deeded to Daniel Wray, the second parcel being also a part of the survey above mentioned, ten of which was deeded to Daniel Wray by Hilery Blankenship, the above two piece of land hereby sold and conveyed containing 36 acres. The third tract containing 23 acres was granted to Daniel Wray by letters of patent bearing date 13th of August 1825." Recorded September Court 1832.

Giles Deed Book 3, page 114: May 24, 1834 - Hillery Blankenship and Milly his wife to Santy Vina, for \$30, 16 acres on north side of the New River in the Big Spring Hollow [currently Curve Branch Hollow] adjoining a tract of land belonging to Santy Vina and James Vina, which tract was conveyed to them by Daniel Wray. Recorded January Court 1837.

Submitted by Michael Blankenship



Scene on the New River

Tennessee The Volunteer State Vol 4, p687-688

JOHN TALBERT MORGAN

Again and again in the life histories of our successful American business men we discover evidences of the truth of the old precept that sufficient and satisfying rewards await those who strive. The examination of career after career reveals the fact that the ladder was not ascended at a single leap and that the man of affairs of today was the hard-working employe of yesterday. To John Talbert

Morgan, vice president of the Edgar-Morgan Company of Memphis, have now come the rewards of industry, integrity and efficiency.

He was born on a farm in Roanoke county, Virginia, on January 29, 1871, the son of Captain Dempsey Abiah Morgan, a farmer and dealer in agricultural lands. Captain Morgan was a native of South Carolina, his birth having occurred on the 20th of October, 1822, in Edgefield district. As a young man, prior to the Civil war he went west and settled near Independence, Texas, and during the war was a captain in the Fourth Texas Infantry, on duty with the coastal defense of his state. Before the war he had married Miss Laura Hines, a native of Georgia, who had come to Texas with her parents as a girl and it was at Independence that their wedding took place. After the war Mr. and Mrs. Morgan moved to Roanoke county, Virginia, which was their home for the remainder of their lives. In his enterprises as a land speculator and dealer Captain Morgan was very successful, having accumulated at the time of his death a considerable estate. Left fatherless at the age of five, John T. Morgan, together with his brother and sisters, grew up under the mother's guidance, and well it was for these little folks that she lived until they had all grown to maturity, passing away in 1912. The subject of this sketch is the only member of the family in Tennessee, his only brother and three sisters still residing in Virginia in their native county.

Growing to manhood on the farm, John Talbert Morgan obtained his education in the near by schools until he was ready to enter Washington and Lee University, where he took a course in civil engineering. Among his classmates in college was a young man, John W. Davis, who has since won more than national fame as a lawyer in New York city and was the ambassador extraordinary and plenipotentiary from the United States to

Great Britain from 1918 to 1921. For five years after leaving the university he followed the engineering profession, during three of which he was employed by the city of Baltimore as assistant engineer. While in this service he helped in drawing a map of the city for official use. Having decided, however, that the field of civil engineering was overcrowded and offered insufficient opportunities for advancement, he resigned his position in the Baltimore city government and went to Chicago, where he succeeded in getting himself on the sales force of a large wholesale paper house as a traveling representative. His firm assigned him to the southern district and with headquarters at Memphis he traveled about Tennessee and the neighboring states for fourteen years in the interests of this house.

While he was thus employed he acquired an interest in the John B. Edgar Grain Company and before he left the road he had increased his holdings in this concern to half of the stock. In 1908 he resigned his position with the paper company in order to devote all of his time to the grain business. At this time a reorganization took place in the company by which the name was changed to the Edgar-Morgan Company and the business was converted from a grain trade into a manufacturing concern, producing all kinds of live stock and poultry feeds. The firm is now located at the corner of Mississippi and Broadway and employs about one hundred men in its factory. The products include all kinds of feed for live stock and poultry, which bear the trade mark "Happy Line of Sweet Feeds." Because of the large local supply of cotton seed Memphis now leads the other cities of the country in the manufacture of mixed stock feeds, and of the firms in the city engaged in this line of manufacture the largest is the Edgar-Morgan Company, which is now shipping five thousand carloads of feed annually. The market for the company's output is chiefly in the south and east, and covers so large a territory that it finds it necessary to keep twelve traveling salesmen in the field all of the time. The officers of this company at the present time are: John B. Edgar, president; John T. Morgan, vice president; Howard Jones, secretary and treasurer.

Nor has Mr. Morgan confined his activities to this business alone or limited his interests to this line of endeavor. He was one of the leading spirits in the organization of the Liberty Savings Bank of Memphis, the plans for which were formulated in his own home. At present he is the vice president of this growing financial institution. He is also prominently identified with several of the leading business men's associations in the city, being a member of the Memphis Merchants' Exchange and one of its former presidents, and

belonging to the Chamber of Commerce and the Rotary Club. has become intensely interested in the work of the Boy Scout movement. At any event, it is his chief hobby and one that has claimed much time and personal attention as well as his financial support. He is now vice president of the Chickasaw Council of the Memphis Boy Scouts of America. A love of nature and outdoor life has particularly qualified him for this work, as he shares with his young comrades a ready zest for sports, camping and holiday hikes. He also belongs to the Memphis Country Club and the Five Lakes Outing Club.

On the 2d of June, 1903, Mr. Morgan was married to Miss Margaret Benners of Birmingham, Alabama, daughter of the Hon. Alfred H. Benners, a prominent lawyer and ex-chancellor of that city. By her marriage she has become the mother of four boys: Talbert, Allen, Augustus, and William. The religious affiliations of the family are with the St. Luke's Episcopal church.

Sam Morgan has added the following:

Dempsey Abiah Morgan, born 22 October 1822, Edgefield District, South Carolina, died 22 March 1878, Roanoke County, Virginia (per: Oakey's Funeral Home, Salem, Virginia). The family was insistent that the body be sent back to Edgefield District for burial. He was the grandson of Dempsey and Sarah Lyon Bussey and Abiah and Nancy Pace Morgan.

His first wife, Amelia Ruth Holmes died 1854 and is buried in Independence, Washington Co., Texas. His second wife, Laura J. Hines Morgan, born 11 September 1837, died November 1913 and is buried in East Hill Cemetery, Salem, Virginia. There is an empty space beside her grave. Laura J. and family sold land on Carvins Creek between 1890 and 1900, Roanoke, Co.

1880 Census, Roanoke, County

Laura J. Morgan, 45, farmer

Mary Morgan, 24, daughter (married James M. McManaway in 1882)

Evan Morgan, 17, son

• James Morgan, 15, son

Marion Morgan, 12, daughter

Talbert Morgan, 10, son (born 29 Jan. 1871, Roanoke Co., married Margaret Benners)

Maude Morgan, 7, daughter

Eugene Morgan, 5, son

I am indebted to the Southwestern Virginia Genealogical Society for some of the above information.

Submitted by: Sam O. Morgan

41 Morgan-Bussey Road

Edgefield, South Carolina 29824

BOTETOURT COUNTY, VIRGINIA DEATH RECORDS - continued

HUFFMAN, Susanna - b 11 Nov 1824 - d 6 Feb 1895 Bot Co - f [Jacob NOFFSINGER] - m [Elizabeth SNIDER] - hus [James F HUFFMAN] - buried Noffsinger Cem, Rt 220 s. of Fincastle

HUFFMAN, Vergie Collene - b 29 Nov 1911 Bot Co - d 21 Feb 1914 - f Harold C [written above Harvey Christopher] HUFFMAN (b Bot Co) - m Willie A (DWIER) (b Bot Co) - buried Cave Rock Cem - cd nephritis

HUFFMAN, [William] Henry - b 16 Aug 1854 Bot Co - d ca 1924 Bot Co, Settlement WB 3 p350 - f James F HUFFMAN - m Susannah NOFSINGER - wife Ella May SHAVER; Ch Lester W

HUFFMAN, William Taylor - b ca 1871 Bot Co - d 1947 Bot Co Heir list, WB 10 pl22 - f Anderson HUFFMAN (b Craig Co) - m Mary J WALTRON (b Pa) - relatives: 1st wife "Cinny" [written above Lucinda] SWITZER, 2nd wife Nora F GUSLER (b ca 1886; Ch Bessie TAYLOR (b ca 1896); E P (b ca 1900); Clemmie (b ca 1907); George (b ca 1912); Ralph (b ca 1913); Frances WOOD (b ca 1917); Sena (b ca 1918); Annie (b ca 1920); Benjamin (b ca 1921); Jesse (b ca 1924); Nephew J D MOORE (b ca 1918)

HUGGART, William - d by 16 marked out & 14 written above) Mar 1775 - Ref WB A p52, appraisal & admr bond - Admr Thomas HUGGARD

HUGH(E)S see James Burke FINK, Susianna I VEST

HUGHS, Rebecca - b ca Dec 1839 Bot Co - d 16 Sep 1858 - age 18y 9m - f Robert HUGHS - cd unkn - rep by father

HULL, John - b ca 1845 Monroe Co, Va - d 1 June 1855 - f Irvin HULL - cd not nown - rep by father

HUMBERT see Tena A KESLER

HUMBERT, D W - b 3 Sep 1848 Aug Co - d 10 Mar 1917 - f Samuel HUMBERT (b Aug Co) - m Sarah (LEADY) (b Aug Co) - buried Daleville Cem - cd pulmanary TB

HUMES, Eliza - d by 11 Dec 1860 - Adm Joseph GILMORE

HUMES, William - d 3 May (1806 corrected to 1860) - age 50y - grave Mt Union Cem - admr 13 July 1868 Josiah JOHNSON

HUMPHRIES see Lucy F RANDALL

HUMPHRIES, Henry - d by 15 Dec 1817 - Ref WB C pl18, 222, appraisal & settlement - Adm^x Elizabeth HUMPHRIES

HUMPHREYS, John - d by Sep 1796 - WB A p431, appraisal

HUNGATE see male RICHARDSON

HUNT see Josephine HICKOK

HUNTER see Virginia R BUHRMAN, Susan DEISHER, Robert Jaret GILLIAM, James LAWRENCE, William H ANDERSON

HUNTER, Mary A - b ca 1833 Bot Co - d 8 Aug 1866 - age 33y - f John R MAYS -
m P - cd typhoid fever - rep by hus Thomas A HUNTER

HURST see Gladis C LEMON

HURST, ____ - d by 14 Feb 1797 (dau called an orphan) - dau Nancy (age ca 3½y)

HURST, C L - b Apr 1868 Carroll Co - d 13 Dec 1912 - f Leander HURST (b Carroll Co) - m Mary Ann (McGRADY) (b Carroll Co) - buried Givens Va Cem - cd fall

HUSTON see Henry CARTWILL

HUTCHINS see Fatima CAMPER

HUTCHESON see Mary LINKENHOKER, Palmer Steele LINKENHOKER

HUTCHISON, Martha K (single) - b ca 1842 Bot Co - d 29 Jan 1864 - age 22y
- f William HUTCHISON - m Mary - cd consumption - rep by father

HUTCHINSON, William - d by 14 Apr 1778 - Ref WB A p85, will dated 23 Apr 1777
Admr bond - kinsman, James HUTCHINSON Sr - Admr George HUTCHESON

HUTSON, J S - b 8 Dec 1836 - d 3 Feb 1910 - grave Mt Mariah Lutheran Cem

HYLEMAN see Nicholas FIRESTONE

HYLTON see Addie HEADEN

HYLTON, Evastus - b 17 Nov 1842 - d 4 June 1921 - grave Haymakertown Cem

HYPES, Marah - b 1830 Bot Co - d 7 Dec 1914 - f David HINER (b Va) - m
[Dellia] (KESLER) (b Va) - buried Brick Union Cem - cd senility

HYPES, William Randolph - b 23 May 1859 Bot Co - d 18 Sep 1913 - f not known
- m Catherine LINKENHOKER (b Bot Co) - buried Fincastle Cem - cd Alcoholic & uremia

HYPES, W P - b 30 Nov 1845 Bot Co - d 1 Dec 1914 - f A[lexander] HYPES (b Va)
- n Annie (SHANKS) (b Va) - buried Brick Union Cem - cd paralysis

ICENHOWER see ISANHOWARD

ICENHOWER, male - b ca 1856 - d Apr 1856 - f George ICENHOWER - m Mary - cd
not known - rep by father

INGLEBIRD, George - d 11 (Aug marked out & May written above) 1778 - Ref WB A
p94, appraisal & Admr bond - Admr Thomas MILLER

INGRAM, Alexander - d by 9 May 1782 - Ref WB A p178, will dated 5 Dec 1780,
Admr bond - wife Mary; Ch Ann (md ____); John, William, James, Mary,
Alexander Jr - Admr John INGRAM

IRELAND see Michael COON

IRVINE, Elizabeth (md) - b Va - d by May 1850 - age 56y - cd cronic - Ref 1850 Bot Co Mort Schedule

ISAACS see Amanda Virginia BON HOTEL

ISAACS, George - b 1838 Bed Co - d 3 Mar 1914 - buried Glade Creek Cem - cd Brights Disease

ISAACS, Nancy A - b 9 Mar 1838 Bot Co - d 2 Dec 1912 - f John KESLAR (b Bot Co) - m E[lizabeth (KINZIE)] (b Bot Co) - buried Glade Creek Cem - cd bronchitis

ISANHOWARD, Samuel - d by Dec 1824 - Ref WB C p587, will dated 1 July 1824 - wife Ann Elizabeth; Ch John, Jacob, Betsy (md CAHOON); Susan (md CAMPER); Samuel, Rebecca, Thomas Jefferson, Cynthia Magdalen (md Henry W KELLY), Timothy Newel

JACKSON see Reuben HILL (colored), Peter ANDERSON

JACKSON, George (colored) - b ca 1806 Va (census #1328) - d by 8 Dec 1856 - h/o Nancy - Adm Samuel M CARPER

JACKSON, Thomas E - d by 25 Jan 1900 - cd excessive use of liquor - Ref Inquest papers

JACOBS see Harriett DOLLMAN

JAMES see Samuel BALDWIN, Harman CAMPER, Mildred Louise LUCAS

JAMES, Alfred - b ca 1849 - d 2 Mar 1853 - f Green JAMES - m Susan - cd pneumonia - rep by father

JAMES, Edward William - b ca 1844 Bot Co (census #1314) - d 5 May 1862 Williamsburg, Va - age 17y 8m - f Green JAMES - m Susan - cd gunshot - rep by father - Adm Green JAMES

JAMES, George J - b ca 1861 Bot Co - d 15 May 1864 - age 3y - f Green James - m Susan - cd diptheria - rep by father

JAMES, Joshua Edward Jr - b 15 Sep 1912 Haden, Bot Co - d 27 Nov 1912 - f J E JAMES (b Delaware) - m Willie WATKINS (Haden) (b Haden) - buried Haden Cem - cd pneumonia

JAMES, Mary Magdaline - b 14 June 1826 - d 24 (Mar or May) 1860 - age 33y - f [Henry BEAR] - cd unkn - rep by hus Joseph JAMES - Ref Death Bk; Brick Union gravestone

JAMES, Palmer - b ca 1864 Bot Co - d 1 Mar 1865 - age 1y - f Joseph JAMES - m Elizabeth - cd croup - rep by father

JAMES, Rebecca Jane - b 16 Mar 1845 Bot Co - d 6 Oct 1854 - f Joseph JAMES - m Mary - cd flux - rep by father - Ref Death Bk; Brick Union gravestone

JAMES, Robert - b ca 1824 Bot Co - d 21 Dec 1866 - age 42y - f John JAMES - m Luevenia - cd very sudden - rep by wife Malinda JAMES

JAMES, Virginia - b ca Mar 1862 Bot Co - d 3 Apr 1862 - age 8d - f Robert
JAMES - m Malinda - cd diptheria - rep by father

JAMISON see male MANGUS, Aubrey JAMISON MANGUS

JAMISON, Jacob H - d by 23 July 1906 - cd suicide - Ref Inquest papers

JAMISON, John - d by 6 Jan 1813 - WB C pl6, appraisal

JARRED see also: GERARD

JARRED, John Sr - d by 26 Mar 1808 (date marked out, replaced by Dec 1807,
marked out & replaced with original date) - Ref WB B pl93, appraisal

JENEY see James McCONNELL

JENKINS see JINKINS, Bettie J EDENS, Mary J FIREBAUGH

JENKINS, Jeremiah - d by Feb 1821 - WB C p309, will dated 27 Nov 1815 - Rela-
tives: Others Eliner FALLS (her sons, Peter & Benjamin); Amelia WILLIAMS,
Peter FALLS

JENNINGS see James MASON, James Lawrence HAMILTON

JENNINGS, Mary F - b 11 Oct 1862 Va - d 24 Mar 1913 - f Thomas H TALLEY (b Va)
- m Nannie (AUSTIN) (b Va) - buried High Bridge Cem - cd Fatty heart

JENNINGS, Pollard - d 1869 - Adm bond 8 Feb 1869 Eliza J JENNINGS

JENNINGS, Simon - d by 29 Aug 1910 - cd unkn or natural - Ref inquest papers

JETER see Edward BRUGH

JETER, male - b 6 Nov 1915 Bot Co - d 6 Nov 1915 - f J[acob] B JETER (b Bon-
sacks, Va) - m Hattie (BRUGH) (b Nace, Bot Co) - buried Bonsacks Cem - cd
permature

JETER, Alice Cary - b ca Feb 1861 Bot Co - d 24 July 1862 - age 0y 17m 0d -
f Benjamin JETER - m Susan - cd diptheria - rep by father

JINKINS see JENKINS, James FALLS, James FALLS Jr

JOHN see Sarah Ann GARDNER, Elizabeth SESSLER, John B SESSLER, John T SESSLER

JOHN, Anna - b 1802 - d 1889 - w/o James JOHN - Ref Haymakertown gravestone

JOHN, Jacob - d by Oct 1806 - Ref WB B pl29, will dated 13 Sep 1806 - Rela-
tives: wife Cathren; Ch Henry, Jacob; s-i-l Daniel BARE; ch by 1st wife (not
named) - Ex^r Henry JOHN

JOHNSON see Elizabeth LEMON, Jane W THOMAS, Thomas TEEL, George KILMER, Robert
Scott AYERS, Charles R CLEMENT, female COMPTON, Parthenia COMPTON, Martha
Frances DUDDING, John GOODWIN, male HAYMAKER, Elizabeth LEMON, John N LEMON,
Edward Johnson PETERS, James ROWLAND, Charlotte Adeline SHEETS, Susan SULLEN-
DER, Thomas ZELL

JOHNSON, Castleton - d ca 1790 Va (census #1050) - d 2 July 1859 Bot Co - age 69y - f [John JOHNSTON] - cd fever - rep by son John T JOHNSON - h/o Nancy JOHNSON - Adm John P JOHNSON (8 Aug 1859)

JOHNSON, Catherin - b ca 1789 Ireland - d 5 Apr 1856 Bot Co - cd paralysis - rep by sis Rebecca BACKENSTO - w/o Henry M JOHNSON

JOHNSON, David H - d by 9 Dec 1867 Bot Co - Admr 9 Dec 1867 The Sheriff

JOHNSON, Elizabeth - b Pa - d 2 Nov 1870 Amsterdam Twsp, Bot Co - cd old age rep by dau Mary JOHNSON - w/o James JOHNSON

JOHNSON, Elizabeth (widow) - b ca 1794 Bot Co - d 19 mar 1870 Buchanan Precinct - age 76y - cd old age - rep by s-i-l William BOOZE

JOHNSON, Frances (of Salisbury Furnace) - b ca 1823 Bot Co - d 7 (?) 1895 Bot Co - f Rufus PITZER [Rufus was her bro] - cd unkn - rep by son C B JOHNSON - w/o Moses B JOHNSON

JOHNSON, Frances N - b ca (1849 marked out) [1842] Bot Co - d 5 Jan 1853 Bot Co - f [John N JOHNSON] - m Eliza O JOHNSON - cd disease of heart - rep by mother

JOHNSON, Frank - b 30 Aug 1832 Va - 24 Aug 1914 Bot Co - f (b Va) - m Annie WINGFIELD (b Va) - buried Clifton Forge Cem - cd heart leakage

JOHNSON, Gabrill Munday - b 17 Jan 1887 Va - d 9 Feb 1915 Bot Co - f J[oshua] L JOHNSON (b Va) - d Willie J (COTTRELL) (b Va) - buried Buchanan Cem - cd TB

JOHNSON, George R (of Buchanan) - b ca 1861 Bot Co - d 11 Sep 1884 Bot Co - f George S JOHNSON - m Nannie - cd typhoid fever - rep by f George S JOHNSON

JOHNSON, Harriet Ann - b 7 Mar 1840 Bot Co - d 12 Jan 1914 Bot Co - f William WELCH - m Susan (MARKHAM) (b Bot Co) [p^s md Bot Co 25 Sep 1834] - buried family cem - cd died suddenly - [hus Charles W JOHNSON]

JOHNS(T)ON, Isaiah (widower) - b ca Apr 1774 Md (or Va, census #242) - d 13 Mar 1859 Bot Co - age 84y 11m - cd paralysis - rep by s-i-l Jacob DAMEWOOD - h/o Jane - Ex Moses JOHNSTON & Jacob DAMEWOOD

JOHNSON, James - b 20 Sep 1908 Bot Co - d 22 Aug 1912 Bot Co - f William S JOHNSON (b Rb Co) - m Maggie (EGNOR) (b Rb Co) - buried Bethel Cem - cd Enterocolitis

JOHNSON, James - d by 11 Nov 1867 Bot Co - Admr 11 Nov 1867 the Sheriff

JOHNSON, James H - b ca 1800 Bot Co - d 15 Mar 1858 Bot Co - age 58y - cd pneumonia - rep by dau Mary JOHNSON

JOHNSON, John Henry - b ca 1857 Bot Co - d 21 Aug Bot Co - age 5y 0m 21d - f William JOHNSON - m Martha - cd diptheria - rep by father

JOHNSON, John W (of Glade Creek) - b ca 1874 Bot Co - d 1 Apr 1885 Bot Co - f Richard JOHNSON - cd consumption - rep by f Richard JOHNSON

JOHNSON, Margaret - d by 9 May 1853 Bot Co - Adm John RINEHART

JOHNSON, Mary A - b ca 1813 Amh Co - d 6 July 1853 Bot Co - p^s not known -
- cd inflammation of bowels - rep by hus - w/o Peter B JOHNSON (census #1148)

JOHNSON, Moses (of Salisbury) - b ca 1802 Mont Co - d 23 July 1884 Bot Co -
f Isaiah JOHNSON - m Virginia - cd old age - rep by wife Fannie JOHNSON

JOHNSON, Sarah A (of Peaks of Otter) - b ca 1822 - d 15 Mar 1889 Bot Co - f
Castleton JOHNSON - m Nancy - cd not known - rep by bro Steven H JOHNSON

JOHNSON, Susan M (of Arnolds Valley) - b ca 1837 Rb Co - d 10 July 1876 Bot
Co - f James H JOHNSON - m Martha M - cd consumption - rep by bro Samuel H
JOHNSON

JOHNSON, Susannah (of Haymakertown) - b ca 1815 Bot Co - d 20 June 1884 Bot
Co - d [David SMILEY] - m [Elizabeth SHANK] - cd broken down - rep by hus
Isiah JOHNSON [Jr]

JOHNSON, Thadeus C (of Eagle Rock) - b ca 1842 Bot Co - d 17 Apr 1891 Bot Co
- f Nathan JOHNSON - m Janie - rep by wife Fannie JOHNSON

JOHNSON, Thomas (of Catawba) - b ca 1817 unkn - d 12 July 1895 Bot Co - f unkn
- m unkn - cd cancer - rep by wife Lydia JOHNSON

JOHNSON, Vina - b 18 Mar 1846 Rb Co - d 20 May 1913 Bot Co - f Mathew JONES
(b Va) - m Vina (JONES) (b Rb Co) - buried Gala Cem - cd disease of heart

JOHNSON, V[ictoria] V (female) - b ca 1838 Va - d 1 Apr 1916 Bot Co - f Moses
JOHNSON (b Va) - m [Maria] - buried Buchanan Cem - cd Asthma & Hypostalic
congestion of lungs

JOHNSON, Whitfield - d ca 9 June 1862 - Adm Achilles E JOHNSON

JOHNSTON see JOHNSON, George KILMER, Helen BELL, Charles Wesley PETERS,
Theodocie JOHNSTON SPERRY

JOHNSTON, ____ - b ca 1812 - d 1 (?) 1858 Bot Co - age 46y - Ref Beaverdam
gravestone

JOHNSTON, Ann O - b ca 1775 Va (census #970) - d 31 May 1851 Bot Co - age
26y (should be 76y) - f [NASH] - [hus Andrew JOHNSTON] - Ref Beaverdam Cem

JOHNSTON, Archibald - d by 11 Apr 1853 Bot Co - adm Henry Walrond

JOHNSTON, Edward (Judge) - b ca 1807 [b Va, census #970] - d 1 May 1853 (d in
Pocahontas Co, reported in Bot Co) - f [Andrew JOHNSTON] - m [Anne O NASH] -
cd pneumonia - rep by wife Emiline JOHNSTON - Adm Emiline JOHNSTON

JOHNSTON, Elizabeth P - d 28 Mar 1820 Bot Co - f James STEPTOE (of New London)
- m [Frances CALLOWAY] - hus Charles JOHNSTON - obituary in Lynchburg Press
of 7 Apr 1820

JOHNSTON, Eve - d by Nov 1809 Bot Co - f [PERSINGER?] - Ref WB B p222, will
dated 21 June 1809 - Relatives: Ch Henry PERSINGER, Jacob JOHNSTON, William
JOHNSTON, Sarah PORTER, Rachael SINKHORN, Margaret Smith, Andrew JOHNSTON;
Gdau Rebecca SMITH - Ex^{rs} Jacob PERSINGER, Michael MALLOW

JOHNSTON, Ezekiel - Aug 1781 (reported in Bot Co; in service in NC) - Ref WB A p137, will dated 9 Aug 1781; Admr Bond - wife Eve; Ch Andrew, Sarah, Rachel, John, Jacob, William, Margaret - On 8 Feb 1791 son Andrew was declared his eldest son. - Admr Eve JOHNSON, Jacob PERSINGER

JOHNSTON, Hannah - d by 12 Apr 1785 Bot Co (dau called an orphan) - dau Milly

JOHNSTONE, James Andrew, Dr - b 6 Feb 1836 - d 7 Mar 1882 Bot Co - f [Peter B JOHNSTONE] - m [Mary HIGGENBOTHAM] - [h/o Annie E BRUGH JOHNSTONE] - grave Mill Creek Cem

JOHNSTON, James D - b ca 1847 Bot Co - d 16 Aug 1916 Bot Co - f Isiah JOHNSTON (b Va) - m Susan (SMILEY) (b Va) - buried Cloverdale Cem - cd apoplexy

JOHNSTON, James G - b ca 1852 Bot Co - d 25 Oct 1855 Bot Co - f John T JOHNSTON - m Mary E - cd scarlet fever - rep by father

JOHNSTON, John - d by Oct 1806 Bot Co - f [Ezekiel JOHNSTON] - m [Eve] - Ref WB B p130, oral will not dated - Relatives: others, George CRAFT, who took care of him.

JOHNS(T)ON, John - b ca 1754 Goochland Co, Va (or ca 1766 census #1050) - d 5 June 1856 Bot Co - f Stephen JOHNSTON - m Susan [PIERCE or PACE] [p^s md 1 Oct 1765 - cd Old age - rep by son Catlott /?Castleton JOHNSTON - [see Jones' The Douglas Register, p 227

JOHNSTON, John N[ash] - b ca 1800 (census #1136) - d by 12 Aug 1850 Bot Co - f [Andrew JOHNSTON] - m [Anne O NASH] - h/o Eliza [Ogilvie BELL] - Admr William T HARDY

JOHNSTON, John W - b ca 1832 Bot Co - d 8 July 1854 Bot Co - f Samuel JOHNSTON - m E[lizabeth] - cd bronketus - rep by father

JOHNSTON, Lester - d by 24 Oct 1903 Bot Co - cd hit by train - Ref Inquest papers

JOHNSTON, Mary A (of Howrytown) - b ca 1815 Bot Co (census #890) - d 16 May 1885 Bot Co - f [James] JOHNSTON - m [Elizabeth] - cd paralysis - rep by sis Sarah JOHNSON

JOHNSTON, Peter [Emigrant] - b [1710 Edinburg, Scotland] - d by 14 Sep 1790 [or 1786] - Ref WB A p383, Admr bond & appraisal - [wife, Mrs Martha (BUTLER) ROGERS; sons Peter, Edward, Andrew, Charles] - Admr John CRAIG

JOHNSTON, Robert F - b 18 June 1915 Va - d 10 Feb 1916 Bot Co - f Haris F JOHNSTON (b Va) - m Viola (HAGIA) (b Va) - buried Bristol Cem - cd pneumonia

JOHNSTON, Robertson G - b ca 1837 Rb Co - d 13 Aug 1856 Bot Co - f Moses JOHNSTON - m Maria - cd Bil. cholick - rep by father

JOHNSTON, Thomas Henry - b ca Oct 1835?36 Bot Co - 15 Nov 1866 Bot Co - age 30???31y 1m 0d - f Edward JOHNSTON - m Emma[line] S BOWYER - cd information bowels - rep by wife S W JOHNSTON - Ref Beaverdam gravestone - Adm 10 Dec 1866 Emiline S JOHNSTON - also death notice in Rke times for 4 Dec 1866

JOHNSTON, William A (unmd) - b ca 1832 Bot Co - d 14 Sep 1857 Williamsburg, Va (reported in Bot Co) - f James JOHNSTON - m Elizabeth - cd dysentary - rep by father

JONES see Vina JOHNSON, Rosa LUCAS, Josephus STRICKLAND, John PECK, Carey B BRADSHAW, Martha BRADSHAW, Mary CALDWELL, Robert CALDWELL, John Lewis CAMPER, Osborn DAVIS, George DUNBAR, Nancy FELLERS, Silas T FELLERS, William Franklin FISHBURN, Perey Walter HOOTSEL, Martha WATKINS

JONES, infant - b 17 Nov 1914 Glen Wilton, Bot Co - d 15 May 1916 - f R J JONES - m unkn - buried Clifton Forge Cem - cd Broncho pneumonia

JONES, ___ - d by 14 Feb 1797 (dau called an orphan) - dau Hannah

JONES, ___ - d by 12 Nov 1816 (ch called orphans) - Ch Calvin, Nancy, Hager, James

JONES, Ambrois [or Ambrose] - d by May 1822 - Ref WB C p341, will dated 26 Mar 1822 - wife Elizabeth - Ch Polly, Allen, James, Ambrois, Catherine (md [Adam] MOYER); Milly (md [John] WATKINS); Mary (md ___ WATKINS); Nancy (md [Moses] WATKINS); Sally (md ___ RUSSELL) - Ex^{rs} Allen JONES, John WATKINS

JONES, Ann Regina - b 27 Apr 1847 Bot Co - d 31 Aug 1854 - age 7y 4m 4d - f David C JONES - cd flux - rep by father - Ref Death Bk; Brick Union grave-stone

JONES, Beauregard - b 8 June 1870 Bot Co - d 10 June 1870 Amsterdam Twsp - age 2d - f George JONES - m Lucy - rep by father

JONES, Dollie C - b 5 Sep 1912 Bot Co - d 6 June 1913 - f J E JONES (b Bot Co) - m Eliza (HINES) (b Rb Co) - buried Springwood Cem - cd gastric enteritis

JONES, Eliza - b ca 1817 Aug Co - d 4 Nov 1853 - f Edward VALENTINE - cd child bed - rep by hus John W JONES

JONES, George H - b ca 1852 - d 20 June 1853 - f John T JONES (blacksmith) - m Mary V - cd measles - rep by father

JONES, Grace - b 19 Apr 1915 Rke City - d 31 Jan 1916 - f Samuel JONES (b Floyd Co) - m Eveline (BROWN) (b Bot Co) - buried Bonsacks Cem - cd pneumonia

JONES, Hannah (single) - b ca 1789 Bot Co - d 18 July 1859 - age 70y - cd not known - rep by Steward

JONES, John - d by 14 July 1773 - WB A p32, will dated 18 Apr 1793, Admr bond - wife Elizabeth; Ch Nathaniel, John, Margaret (md ___ McCOY); Elizabeth, Marthew, Sarah, Jean, Hannah (md Thomas HARRISON) - Admr James McCLURE

JONES, John Gabriel - d by 12 Nov 1779 - f John JONES (of England) - m SLADE (of England) - Ref WB A p115, 117, will dated 1 Nov 1776, Admr bond - Relatives: bros Samuel, Gabriel, Thomas; sis^s Elizabeth, Ann Margaret, Charlotte (md Thomas GRIFFITH) - Admr Patrick LOCKHART

JONES, John J - d ca 1881 - Ref unrecorded will filed in "Unrecorded deeds, etc

JONES, Margaret Virginia - b 3 Feb 1916 Bot Co - d 20 Aug 1916 - f Fred Harrison JONES (b Bed Co) - m Hazel May (SWARTZEL) (b Bed Co) - buried Glade Creek Cem - cd enteritis & diarrhea

JONES, Marion Stuart, Mrs - b 7 May 1828 Va - d 24 Oct 1912 - f Gustavus Brown ALEXANDER (b Va) - m Sallie Blair (STUART) (b Va) - buried Buchanan - cd Apoplexy

JONES, Nancy H - b 6 ca 1838 Craig Co (circled?) - d 28 Jan 1916 - f John TROUT (b Craig Co [circled, Why??] - m Nancy H (TROUT) (b Craig Co [Circled?]) - buried Botetourt Co Cem [Andrews Chapel Cem] - cd fractured hip - [w/o John E JONES]

JONES, Nannie E - b 1 Mar 1858 Bot Co - d 30 Nov (or 1 Dec) 1916 Bot Co - f Frank COX (b Bot Co) - m Casia (STINNETT) (b Bot Co) - buried Back Creek Cem [Lithia Baptist Cem] - cd carcinoma of stomach - w/o James L JONES

JONES, Sarah - b 6 May 1763 Pa - d 19 Feb 1853 - age 89y 9m 13d - f William AUSTIN - m M - cd old age - rep by nephew Isaac AUSTIN - w/o David JONES

JONES, Susan E - b 24 Sep 1836 Bot Co - d 7 Jan 1915 - f William JONES (b Va) - buried Daleville Cem - cd arterio schlerosis & thrombosis

JONES, Susannah - b ca 1778 Bot Co - d 25 Nov 1854 - f John PECK - cd dropsy - rep by son Harrington JONES - widow of Allen JONES

JONES, Virginia - b ca 1833 Bot Co - d 8 Apr 1860 - age 27y - f William STREETLAND (?STRICKLAND?) - cd soar throat - rep by hus John J JONES

JONES, William S - b 17 Feb 1839 Bot Co - d 11 Mar 1916 - f (b Bot Co) - m Mary FAGG (b Bot Co) - buried Daleville Cem - cd Heart lesion & pneumonia

JONES, Wilmer David - b 22 Aug 1912 Bot Co - d 28 Nov 1912 - f Charles JONES (b Bot Co) - m Mary LAMB (b Bot Co) - buried White Church - cd pneumonia

JOPLIN see Kent Oliver CUSTER

JOPLING, Calahill T - b ca 1857 Bot Co - d Sep 1861 - age 4y - f John W JOPLING - m S C - cd diptheria - rep by father

JOPLING, Olivia - b ca 1859 Bot Co - d Oct 1861 - age 2y - f John W JOPLING - m S C - cd diptheria - rep by father

JOPLING, Oscar H - b ca 1858 Bot Co - d Oct 1861 - age 3y - f John W JOPLING - m S C - cd diptheria - rep by father

JORDON see Richard BANDY

JORDAN, Anthony (single) - b ca 1790 Camp Co - d 15 Mar 1868 - age 78y - cd old age - rep by friend Cary BRECKENRIDGE

JORDON, Catherin - b ca 1765 Shenandoah Co, Va (census #331) - d 22 Feb 1856 - f Tavenor BEALE - m Betsy - cd old age - rep by s-i-l James PAXTON - widow of John JORDON - Ex John Jordon PAXTON (14 Apr 1856)

JORDAN, Tavener - b ca 1800 - d 9 Aug 1821 Philadelphia, Pa - age 21y - f Capt John JORDAN of Bot - rep in "Herald of the Valley" 13 Aug 1821

JOSEPH, Isabella - b ca Mar 1857 Baltimore, Md - d 29 Nov 1862 - age 5y 8m - f Philip JOSEPH - m Barbara - cd liver complaint - rep by uncle Isaac GUGGENHERIMER

KALBFLEISCH see Nicholas FIRESTONE

KALE, L S - b ?? - d 1878 - w/o David P KALE - Ref Mt Union gravestone

KANODE see KNODE

KARNES see Mary G GRAY, male MUNDY, Grace Karnes MUNDY

KARNS, Mary Frances - b 15 Aug 1850 NC - d 5 Mar 1916 - f Moses PIERCE (b NC) - m Ellen (COLLINS) - (b NC) - buried Buchanan Cem - cd lobar pneumonia

KAYSER see KEYSER, Elias LINKENHOKER

KAYSER, Joseph D, Dr - b ca 1742 - d Nov 1816 - age 74 - Ref Locust Bottom Gravestone

KAYSER, William A - b ca Apr 1852 Bot Co - d 26 Mar 1862 - age 9y 11m - f J B KAYSER - m Mary E - cd diptheria - rep by father

KAYTON, Bernard - d by 18 Mar 1817 - Ref WB C p86, appraisal

KEACHY see James ALEXANDER

KEAN, Clara G - b ca 1816 - d 9 Oct 1845 - age 29y - 1st w/o Dr O W KEAN - grave Mt Joy Cem

KEAN, Jane C - b ca 1831 - d 30 Sep 1861 - age 30y - f James ARTHUR - m E - cd fever - rep by hus O W KEAN - 2nd w/o Dr O W KEAN

KEAN, Mary E - b ca Nov 1860 Bot Co - d 10 Sep 1861 - age 10m - f O W KEAN - m J C - cd fever - rep by father

KEEBLE, male - b 14 Feb 1913 Bot Co - d 14 Feb 1913 - f Houston Kelly KEEBLE (b ([Knox Co] Tn) - m Lizzie (SHAVER) (b Bot Co) - buried Troutville Va cem - cd shock from delivery

KEEFAUVER see KEFAUVER

KEEFAUVER, Katherine - d by Jan 1820 - Ref WB (Mr B had no book # or p) - Ch Mary, Elizabeth

KEELING see Martha Jane MURPHY, Mary LINKENHOKER

KEELING, Maggie M - b ca 1849 - d 18 Sep 1877 - age 28y - w/o A H KEELING - grave Amsterdam Cem

KEELING, R A - b 18 Sep 1867 Charlotte Co, Va - d 25 Aug 1917 - f W W KEELING (b Charlotte Co) - m Elizabeth (PERY) (b Bot Co) - buried Amsterdam Cem - cd Whiskey & Morphy resulting in liver, heart & kidney disease

KEENEY, Joseph W - b 6 Mar 1863 - d 24 Jan 1916 - f William WOMACK - m Ann KEENEY (p^s unmd) - buried Bethel Church - cd struck by train

KEFAUGER, etc see James HAWK, KEEFAUVER: KEYFOGGER, etc

KEFAUVER see Mary MURRY, KEEFAUVER, KEFAUGER, Oliver Henry MURRY, America ZIMMERMAN

KEFAUVER, Katherine - d by Jan 1820 - Ref WB C p247, will dated 1 May 1819 - Ch Mary, Elizabeth

KEFAUVER, Mary - b ca 1803 - d 1881 Bot Co but rep in Rke Co - f Fred M [marked out & Evan DAY written in] - m Polly - hus David KEFAUVER - cd not known

KEFAUVER, Peter - d by Sep 1814, order - Ref WB B p443, appraisal, C p264, 443 settlement, division - wife Elizabeth (md #2 _____ MADISON); Ch Susannah (md Adam GARNARD), Peter, Polly, Elizabeth, David, Jacob, Daniel; - On 14 Dec 1814 Jacob & David (age over 14); Daniel, Mary & Elizabeth, under 14 - Adm^r Frederick MURRY

KEFFER see Sallie KENDON

KEFFER, female - b 7 May 1854 Bot Co - d 7 May 1854 - f Abraham KEFFER - m E(liza) - cd born dead - rep by father

KEFFER, Emily G - b ca 1848 Bot Co - d 4 Jan 1853 - f Abraham KEFFER (wagon maker) - m E[liza] - cd croup - rep by father

KEITH see _____ ASHBURN, Lillie May ASBURN

KEITH, Alice Virginia - b 2 Sep 1908 Floyd Co - d 8 Apr 1913 - f A J KEITH (b Floyd Co) - m Julia (KEITH)? (b Floyd Co) - buried Mt Union Cem - cd bronchial pneumonia

KEITH, Bessie - b 25 Nov 1897 - d 10 Mar 1899 - f C[hristopher] KEITH - m N[annie] H[owe] WILLIAMS - grave Amsterdam Cem

KEITH, Pergie Lee - b 27 Feb 1890 - d 11 Apr 1902 - f C[hristopher] KEITH - m N[annie] H[owe] [WILLIAMS] - grave Amsterdam Cem

KELLER, Adam - d by 16 Dec 1813 (dau called an orphan) - dau Mary (over 14)

KELLER, Theodocia J - b ca Oct 1861 Bot Co - d 4 Oct 1865 - age 4y 1m - f Washington J KELLER - m Amitia - cd diptheria - rep by father

KELLY see KELY, Michael COON, Samuel ISANHOWARD, Jacob SNIDER, Jacob CLEAR, Sarah V AUSTIN, Rev John A BRUMBAUGH, Lula M BRUMBAUGH, Nannie CADE, Elizabeth CAILER, Edmonson CALDWELL, Uriah COALTER, John HAMILTON, Sallie Catherine LANTZ, Neomi Jane MARTIN, George T ST CLAIR, Eliza Ann SWITZER, Newton SWITZER, Chester Edward TROUT, Andrew WOODS, Julia Frances WRIGHT

KELLY, Emma O - b 30 Nov 1850 - d 4 July 1907 - grave Amsterdam Cem

KELLY, George - d by 11 Feb 1804 - Ref WB B p52, 149, 269, appraisal, settlement & division - wife Mary; Ch on 10 Dec 1805 dau Nancy (over 14); on 10 June 1806 dau Polly (over 14); on 9 Sep 1806 dau Sarah (over 16); on 11 Jan 1809 Peggy (over 14); on 10 Sep 1811 Christian (over 14); on 14 Feb 1815 Jane (over 14) - Adm^x Mary KELLY - His 10 ch's names from deeds when they sold their share in land beginning in 1811: 7 Oct 1811 William ALLEN (wife Polly), Michael COON (wife Elizabeth) DB 10 p467; 7 Oct 1811 Peter LANDIS (wife Sally) DB 10 p465; 4 Oct 1817 William FUQUE (wife Nancy), George WASKEY (wife Patsy) DB 13 p283; 27 Jan 1819 Abraham LANDERS [or LANDRIDGE] (wife Jane) DB 13 p505 24 July 1919 (sic ??1819??) Edmund PEARCY (wife Margaret) DB 14 p74; 22 Sep 1819 Christopher KELLY, John Kelly (wife Elizabeth), George Sr's widow Mary, DB 14 p100; 24 Jan 1829 Benson BAILEY (wife Eve) DB 19 p104

KELLEY, Hallie B - b 16 Feb 1915 Bot Co - d 1 Mar 1915 - f R J KELLEY (b Bot Co) - m Ora R (NICKEL) (b Fr Co) (b Bot Co marked out) - buried Cave Rock Cem - cd pneumonia

KELLY, Isaac P - b 1 Dec 1836 - d 20 Sep 1893 - Ref Lemontown gravestone

KELLEY, James H - b 9 July 1844 Bot Co - d 23 Nov 1915 - f Jacob KELLEY (b Va) - m Elizabeth (BISHOP) - buried Cave Rock Cem - cd Parrelhitic Nef _____

KELLY, John - d by 13 Oct 1828 (ch called orphans) - Ch (all under 14 [b after 1814] Eliza Ann, George, Mary Jane & John

KELLEY, John H, Col - b 16 Dec 1811 - d 8 Mar 1880 - wife Sarah KELLEY (1819-1907) - Ref Amsterdam gravestone

KELLEY, Lotte - b 5 Oct 1914 Bot Co - d 5 Oct 1914 - f Watson KELLEY (b Lick Run, Bot Co) - m Matte (BOAGUS) (b Lick Run, Bot Co) - buried Bethol Cem - cd Entero colitis

KELLEY, Ora Rufus - b Oct 1895 Fr Co - d 14 Mar 1915 - f G H NICKLES (b Fr Co) - m Ellen (GIVENS) (b Fr Co) - buried Cave Rock Cem - cd TB - [w/o R J KELLEY]

KELLEY, Sarah HAYNES - b 3 Sep 1819 - d 11 Sep 1907 - f HAYNES - w/o Col John H KELLEY (1811-1880) - Ref Amsterdam gravestone

KESLER see maybe KESSLER, Mary Virginia WALKER

KELY see KELLY, Jacob SNIDER

KEMPER see CAMPER

KEMPLIN, Ellen S - b ca Jan 1851 Bot Co - d Aug 1860 - age 9y 7m - f Washington KEMPLIN - m "Polly" [Mary FELLERS] - cd dyptheira - rep by father

KEMPLIN, Mary - b ca 1816 Fkln Co - d 12 Nov 1858 - age 42y - f FELLERS - cd consumption - rep by bro Lewis P FELLERS -w/o Washington KEMPLIN

KEMPLIN, Nancy - b ca 1841 Bot Co - d 18 Mar 1854 - f Washington KEMPLIN - m Mary [FELLERS] - cd consumption - rep by mother

KENDON, Sallie (widow) - b ca 1775 - d 9 Feb 1865 Rb Co - age 90y - cd old age - rep by s-i-1 Abram KEFFER

KENDRICK, Snowy Francis - b 1 Nov 1912 Va - d 17 July 1913 - f Millard J KENDRICK (b Va) - m Pattie G (TOLER) (b Va) - buried Barbour's Creek Cem - cd cholera infauntum

KENNY see Polly CASEY

KENNY, ____ - d 14 Oct 1788 (dau called an orphan) - dau Willey

KENNEY, James (widower) - b ca 1780 Rb Co - d 29 Apr 1858 - cd diarrhea - rep by neighbor James M FIGGATT

KENNY, John Sr - d by Nov 1813 - Ref WB B p366, will dated 27 Aug 1813 - wife Elizabeth; Ch William, James, Joseph, David, Sampson, John, Sally, Betsy, Susanna - Ex^T Thomas NEWILL

KENNY, Joseph W - d by 24 Jan 1916 - cd hit by train - Ref Inquest papers

KENNY, William - d by 8 Nov 1774 - Ref WB A p45, will dated 8 Apr 1774, Admr bond - wife Elizabeth; Ch James, Agnes, Jean, Elizabeth, Marrey - [Note: The widow md #2 John SAVAGE] - Admr Elizabeth KENNY

KENT see Eliza RICHARDS, Margaret Jane SWITZET, Newton KESSLER

KENT, Eliza Ann - b ca 1855 Bot Co - d 25 Nov 1855 - f John D KENT - m Eliza Ann [KESSLER] - cd unkn - rep by mother

KENT, Henry Hopkins - f John KENT - m Eliza Ann - Ref Death Bk - rep by mother - cd measles

KENT, Jacob - d by 11 Feb 1777 - Ref WB A p58, will dated 8 Nov 1776, Admr bond - wife Mary; Ch John, Joseph, Robert, Jacob, Jane, Nancy - Admr Mary KENT, Hugh CROCKETT

KENT, John D - b 19 Jan 1818 - d 2 Sep 1878 - h/o Eliza Ann [KESSLER] - Ref Old Glade Creek gravestone

KERN see Isaac ENGLE, Sarah KERN ENGLE, George PURSLEY, Emma KERN RADER, M Woodson RADER

KERN, female - d 26 Oct 1822 - rep in "Herald of the Valley" 16 Nov 1822 - w/o Jacob KERN - mother of large family

KERN, Ella E - b 3 July 1911 Bot Co - d 4 Feb 1914 - f E J KERN (b Bot Co) - m Maggie V (KESSLER) (b Bot Co) - buried near Springwood - cd pneumonia

KERN, Frank Edward - b 28 June 1889 Bot Co - d 7 Aug 1913 - f C W KERN (b Bot Co) - m Mary S (MAYS) (b Bot Co) - buried Union Church Cem - cd TB

KERN, Jacob Harrison, Dr - d 12 Dec 1813 - d 1901 - grave Mt Union Cem

KERN, Jennie - f SOURS - w/o John N KERN - grave Brick Union Cem

KERN, John N - b 26 Aug 1836 - d 13 Mar 1909 - h/o Jennie Sours KERN - Ref
Brick Union gravestone

KERN, Lucy A - b 13 Aug 1834 Bot Co - d 15 Mar 1914 - f Samuel HUFF (b Va) -
m Nancy (NOFFSINGER) (b Bot Co) - buried Springwood Cem - cd pneumonia

KERN, Merietta Jane - b 1 Apr 1865 Bot Co - d 12 Feb 1913 - f D W KERN (b Bot
Co - m Lucy (HUFF) (b Bot Co) - buried Springwood Cem - cd TB

KERN, Mary A - b ca May 1845 Bot Co - d 5 June 1860 - age 15y 1m - f Henry
KERN - cd not known - rep by father

KERN, Sarah Engle - b 2 Feb 1830 - d 1902 - grave Mt Union Cem

KERN, Stephen Woodrow - b 15 Sep 1914 Bot Co - d 20 Feb 1916 - f N H KERN (b
Bot Co) - m Nannie (FINK) (b Bot Co) - buried Springwood Cem - cd broncho
pneumonia

KERN, Virginia Frances - b 10 Oct 1844 Lynchburg, Va - d 25 June 1914 - f
John SOWERS (b Va) - m Virginia Frances (____) (b NY City) - buried Brick
Union Cem - cd congestion of brain

KERR see Dr William Neely ANDERSON

KERR, William - d by 11 Mar 1779 (son called an orphan) - son Samuel

KESSINGER, female - b 15 July 1915 Bot Co - d 15 July 1915 - f W T KESSINGER
(b Giles Co, Va) - m Annie (PENN) (b Bot Co) - buried family cem - cd still
born

KESSLER see HEPLER, Nancy A ISAACS, Adeline LAYMAN, Anna PECK, Agnes HAMILTON
Dolly HINER, Mary SPICKARD, George Washington CAMPER, Lewis HINER, Marah HYPES,
Ella E KERN, Mary KLINE, Bernice Vistive LANDERS, Abe K LAYMAN, Jacob G LAY-
MAN, John McLANE LAYMAN, Mary LAYMAN, James LEMMON (or LAYMAN), John LEMMON,
Margarette LEMON, Mary LEMMON, Samuel Kesler LEMON, Cassie Rader NACE,
(card #2) see KESSLER (maybe); John F RADER, John K RADER, Lou E RADER, Susan
RADER, Jacob NININGER, Laura Rettea REYNOLDS, Eliza RICHARDS, Gertrude KESSLER
SINER, Robert SINER, William H SPICKARD, William Henry ST CLAIR, Margaret Jane
SWORTZEL, Barnette ZIMMERMAN

KESSLAR, male - b ca 1854 - d 4 Oct 1854 - age 5d - f John KESSLAR Jr - m
Elizabeth - rep by father

KESSLER, male - b 16 Nov 1862 Bot Co - d 16 Nov 1862 - age 1/2d - f Lewis KESS-
LER - m Catherine [GOOD] - cd unkn - rep by father

KESSLER, male - b 9 Mar 1825 - f J KESSLER - ref Old Glade Creek Cem

KESSLER, female - b 17 Sep 1856 Bot Co - d 18 Sep 1856 - age 1d - f George
KESSLER - m F - cd not known - rep by father

KESSLAR, male - b 6 Feb 1853 Bot Co - d 13 Feb 1853 - age 7d - f John A KESS-
LAR - m Martha E - cd Hives - rep by mother

KESSLAR, Abraham - b 25 Jan 1778 Pa (census #1645) - d 9 June 1857 - age 79y 4m 13d or 78y 6m 0d - f [Johannus KESSLER] - m [Eva Dorothea LEMON] - cd old age - rep by wife Catherine [HEPLER] KESSLAR (1781-1861) - Ref Death Bk; Lemontown gravestone - Ex Daniel H KESSLER (14 Sep 1857)

KESSLER, Adrian Thornlay - b 10 Feb 1870 Bot Co - d 29 Mar 1879 [written above is 1870] - age 1m 9d - f Abraham KESSLER - m Mary M - cd scafulous affec - Ref Old Glade Creek gravestone

KESSLER, Alice Rebecca - b [Jan 1851] - d [1902 Bot Co] - f William B SHAY - m Matilda J C - w/o Charles Henry KESSLER - grave Brick Union Cem

KESLAR, Andrew Jackson - b 12 May 1836 (# written over) Va - d 18 Dec 1914 Bot Co - f Jacob KESLAR (b Va) - m Barbie (BOWERS) (b Va) - buried Back Creek Cem [Lithia Bap Cem] - cd Uremic coma - wife Lydia A KESSLER

KESSLAR, Ann Brugh - b ca 1852 Bot Co - d 13 Sep 1854 - age 2y 9m - f Isaac KESSLAR - m [Elizabeth B RADER] - cd flux - rep by father

KESSLER, Ann Frances - b 8 Oct 1834 Bed Co - d 21 Feb 1916 - f Abraham (SMELTHER) [written above is SMELSER] (b Bed Co) - buried Troutville Cem - cd chronic myocarditis - [w/o Green W KESSLER]

KESSLAR, Ardena Susan - b 2 Feb 1848 or 9 (# has been written over) - d 6 Jan 1854 - age 5y - f Abraham KESSLAR Jr - m Mary M - cd typhoid fever - Ref Death Bk; old Glade Creek gravestone

KESSLER, Benjamin - b 18 Oct 1772 [Baltimore, Md] - d 22 Nov 1839 [Bot Co] - age 67y 0m 4d - f [John KESSLER] - m [Dorothea LEMMON] - h/o Margaret CLEAR - Ref Old Glade Creek gravestone

KESSLER, Benjamin - b 13 Jan 1834 - d 5 Oct 1914 Bot Co - f Jacob KESSLER - m Barbara BOWER - wife Demaris Ann KESSLER - buried Lithia Bap Cem

KESSLER, Benjamin Thorn - b ca 1841 [or 1851] Bot Co - d 25 Feb 1857 - age 16y - f William C[ox] KESSLER - m [Nancy McCULLOCH] - cd casualty - rep by father

KESSLER, Cassie - b 1870 - d 1939 - f Henry DOOLEY - m Susanna A KESSLER - hus Homer G KESSLER - buried Troutville Cem

KESSLER, Catherine - b ca 1785 Md (or 17 Dec 1781) - d 1 Sep 1861 (or 25 Oct 1861) - age 76y - cd rheumatism - rep by son Abraham KESSLER - Ref Death Bk; Lemontown gravestone - w/o Abraham KESSLER (d 1857)

KESSLER, Catherine - b 21 July 1911 Bot Co - d 7 Aug 1912 - f Luther H KESSLER (b Bot Co) - m Mollie (DAVIS) (b Bot Co) - buried Forest Chapel Cem - cd malnutrition

KESSLER, Chalice C - b 1899 - d 1947 [Bot Co] - f Homer G KESSLER - m Cassie A DOOLEY - #1 wife Jennie E COOPER (1902-1930) - buried Troutville Cem

KESLER, Charles H - b 1851 Bot Co - d 28 Mar 1915 - f Daniel KESLER (b Va) - m Elizabeth (BOWER) (b Va) - buried Brick Union Cem - cd pneumonia

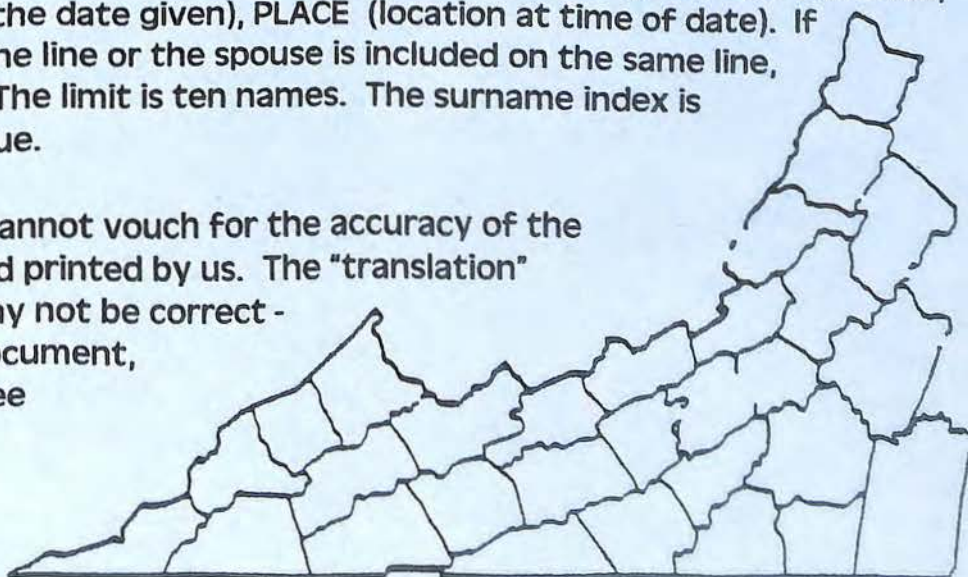
GENEALOGICAL QUERIES: Each member is entitled to one (1) to three (3) free 60 word query (does not include your name, address and e-mail address) per issue as space permits. Please make your query as clear and specific as possible so that others can understand and have a chance to help you. The queries will be printed exactly as submitted. Each query should include names, dates, and location to identify the person or persons you are researching. Please CAPITALIZE all surnames including maiden and married names. Do not abbreviate, we will do so if necessary. If handwritten queries are submitted, please print legibly. Queries for non-members are 5 cents per word, not including your name, address and e-mail address. Queries must be received prior to the 1st of the month preceding publication.

FAMILY REUNION, PUBLICATION OF BOOK, NEWSLETTERS, ETC.: Limited to 60 words, not including your name, address and e-mail address or website. Send the 60 word notice as you want it printed. These notices will be printed as space permits. Members will be given priority in publishing these notices.

MATERIAL FOR PUBLICATION: We welcome articles, records, etc. for publication. The material may not be used in the issue following the date of submission but in a future issue. If a large amount of material is sent , it may take some time to publish because we try to have a variety of material in each issue. (1) **READY FOR PUBLICATION** (which the editor loves). Use 8 ½ X 11 paper, with a minimum margin on all sides of 1 inch. Center your title. Be sure to include your name, address and e-mail address. PLEASE read material carefully before submitting, double-check dates and use "spell checker". If you wish to save the cost of postage, articles for publication may be e-mailed to the editor or The Virginia Room. Photos to be included with your submission may also be e-mailed, most formats can be accommodated. (2) **GIVE SOURCE OF MATERIAL.** Original documents - where found, type of record, page number, etc. or, if known, who (or what facility) now has the document in their possession. We CANNOT print material from printed sources unless we have written permission from the publisher, which you must furnish. We must have the source of materials to give credit to the person who has done the work. (3) **DEADLINE** for submitting material should be at least two months before date of publication. (4) **MATERIAL WILL NOT BE RETURNED.**

SURNAME INDEX: Information will include NAME (given and surname), DATE (birth, death, marriage or where living at the date given), PLACE (location at time of date). If this data takes more than one line or the spouse is included on the same line, it will count as two names. The limit is ten names. The surname index is published in the Summer Issue.

Virginia Appalachian Notes cannot vouch for the accuracy of the material submitted to us and printed by us. The "translation" of the original document may not be correct - get a copy of the original document, if possible, to see if you agree with the printed version.



WINTER 2008

Southwestern Virginia Genealogical Soc., Inc.
P.O. Box 12485
Roanoke, VA 24026

Address Service Requested

NON/PROFIT ORG.
U.S. POSTAGE
PAID
PERMIT NO 374
ROANOKE, VA

1038
Roanoke Public Library Foundation
706 S Jefferson St
Roanoke VA 24016-5104

