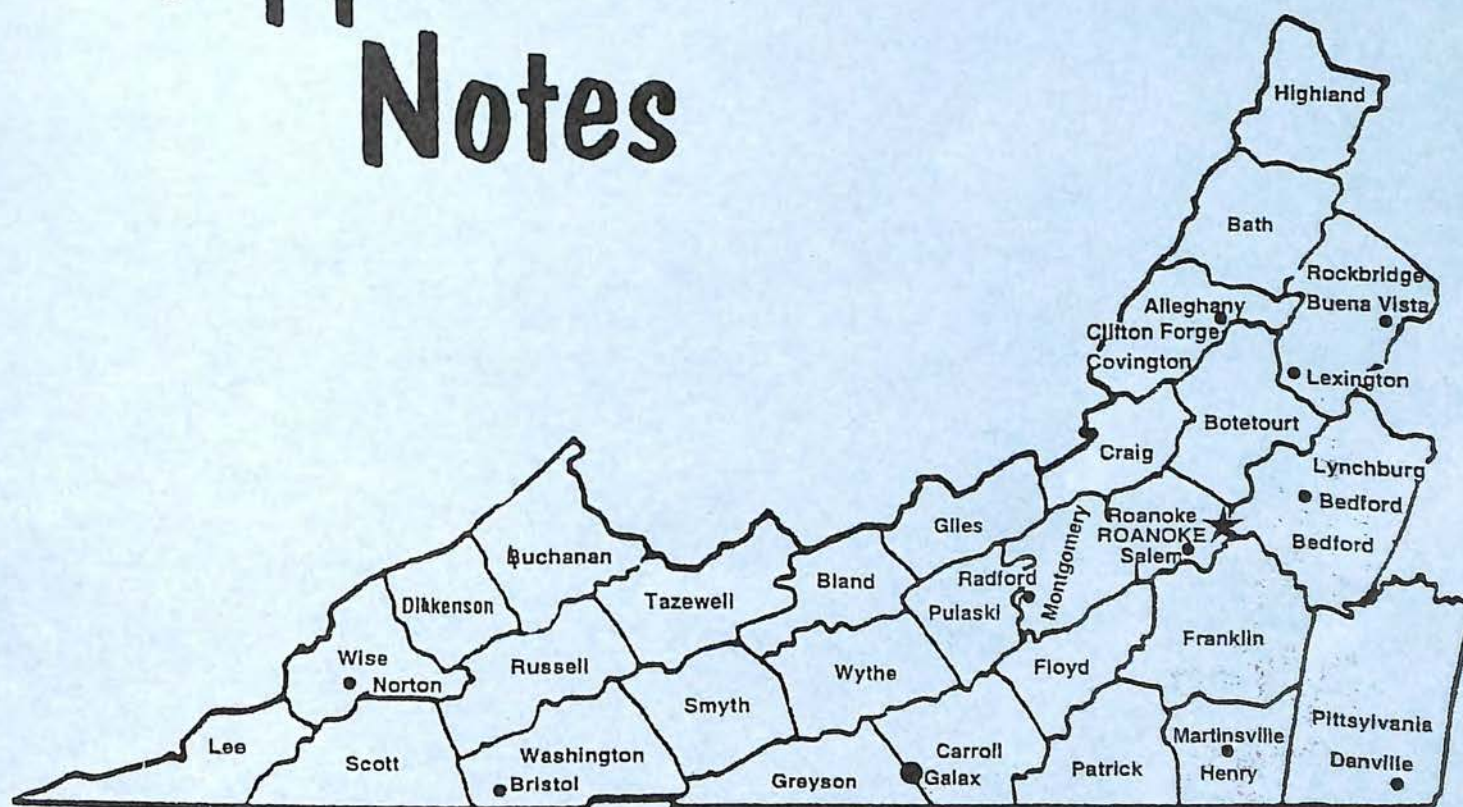


Virginia Appalachian Notes



Southwestern Virginia Genealogical Society
Roanoke, Virginia



Roanoke City Public Library
Virginia Room

SOUTHWESTERN VIRGINIA GENEALOGICAL SOCIETY INC
Calendar Year 2008

Officers and Executive Board		Area Code 540	email address
President	Karen Kappesser	977-0067	gkkapp@infionline.net
Vice-President	Pamela B. Young	342-2367	pmyoung001@aol.com
Record Secretary	Vacant		
Corresponding Secretary	Mickey Prescott	985-0751	mprescott3@cox.net
Treasurer	Don Vaughan	989-8645	DONSVGS@aol.com
Membership	Jim Nelson	725-5303	jasnelson@cox.net
VAN Editor	Michael Blankenship	989-1469	mblankens@yahoo.com
Immediate Past President	Pamela B. Young	342-2367	pmyoung001@aol.com
VAN Editor Emeritus	Babe Fowler	563-1733	fowlervw@cox.net

Committees

Computer/Labeler	Don Vaughan	989-8645	DONSVGS@aol.com
Program	Pamela B. Young	342-2367	pmyoung001@aol.com
Historian	Babe Fowler	563-1733	fowlervw@cox.net
VAN	Michael Blankenship	989-1469	mblankens@yahoo.com
Exchange Quarterlies	Virginia Room Staff		
Publicity	Pamela B. Young	342-2367	pmyoung001@aol.com
Book Reviews	As Signed		

The **SOUTHWESTERN VIRGINIA GENEALOGICAL SOCIETY, INC.** is a tax-exempt corporation under section 501(c)(3) of the Federal Income Tax Code. Section 170 of the Tax Code provides for the treatment of contributions to the SVGS as a deductible contribution by the donor. Bequests, legacies, devises, transfers, or gifts to the SVGS may be deductible for Federal estate gift tax purposes, if they meet the applicable provisions of sections 2055, 23106, and 2522 of the Tax Code.

MEMBERSHIP: Each SVGS member will be mailed a copy of the "Society's" quarterly, the VIRGINIA APPALACHIAN NOTES (VAN). The VAN is usually published quarterly. The annual index will be included in the Fall issue of the VAN for that year. Society memberships are on a calendar year basis and those memberships, which are not renewed by January 30, will be deemed as inactive and removed from the VAN mailing list. Single or family memberships are \$20.00; Organization and Library memberships are \$15.00. Members with mailing addresses outside the United States shall add \$10.00 to the above fees and all monies are payable in U. S. currency. All payments should be made by check or money order, payable to: **Southwestern Virginia Genealogical Society, Inc. or to SVGS, Inc.** and mailed to: **SVGS, ATT: Membership, Post Office Box 12485, Roanoke, VA 24026-2485.**

BACK ISSUES of the VAN: 1995 and earlier, are available at a reimbursement cost of \$4.00 each, as long as the supply lasts. More recent issues are \$6.00 each. These prices include postage. Mailed to Virginia addresses please add 4.5% sales tax. A bulk mailing of old VANs to one address may be eligible for a discount. All payments should be made by check or money order, payable to **SVGS** and mailed to: **SVGS, ATT: Jim Nelson, Post Office Box 12485, Roanoke, VA 24026-2485.**

BOOKS for REVIEW: Books submitted to the Society will be reviewed and the review printed in a subsequent issue of the VAN. When submitting a book, please include the price of the book, copies of the available advertising material, and information as to where orders for additional copies may be placed. Following their review, all books will be placed in the Virginia Room of the Roanoke City Library, Roanoke, Virginia.

VIRGINIA APPLACHIAN NOTES

Published Quarterly

By

SOUTHWESTERN VIRGINIA GENEALOGICAL SOCIETY, INC.

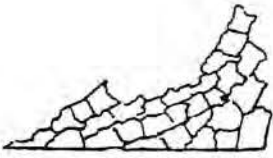


Vol. 32 - No. 2 - Spring 2008
(April, May, June)

CONTENTS

New Books In the Virginia Room submitted by Pamela Young	51
Belmont School Days by Elizabeth Spoelma	55
African American Ancestry - Springwood Cemetery by Robert Bird Additional Springwood Records by Margarete Tynan	56
Memories Held in a Vase by Elizabeth Spoelma	69
1800 Bedford County Tax List from the files of the Virginia Room	70
New Virginia Room Webpage	88
Botetourt County Death Records, continued by Charles T. Burton	89

Submissions for future issues are always welcome.
If you would like to contribute an article on-line please e-mail it to:
mblankens@yahoo.com
The content of the VAN is supplied by its membership.



Southwestern Virginia Genealogical Society, Inc.

P. O. Box 12485
Roanoke, Virginia 24026

PLEASE READ

Dear Fellow Members,

I have some bad news for you - The Society is on the verge of disbanding. Membership is down, costs for printing and mailing the VAN are up and if we fall below 200 members mailing costs will skyrocket. We spend more money than we take in and while there is enough money in the treasury to continue for this year and possibly next, it is unlikely that we can make it beyond the end of 2009.

We mail out meeting reminders to those in the Roanoke area but hardly anyone shows up. All we can conclude is that no one cares about the meetings. The cost of mailing the reminders and the honorarium paid to the speaker further drain our resources.

The board has discussed ways to increase the bottom line. We could increase dues. A small increase would be of little help. We could decrease the size of the VAN to cut printing and mailing costs. If we had a website we might increase our membership. But, would the members be satisfied with greatly reduced quarterly publication and adding members from all over the country would not solve the meeting attendance problem. We REALLY need local members who are willing to come to meetings and more important take an active part in the Society. It seems no one wants to take an office and we, the board, cannot go on forever.

I have asked the board to think over the summer about whether to disband or not. At the board meeting in September we will discuss our options again and make a decision.

Now, I call on all members to give some thought to what we should do and PLEASE, PLEASE contact me with your feelings and suggestions. My contact information is listed below. I look forward to hearing from you.

Happy Hunting,

Karen Kappesser, President
514 Scalybark Drive
Blue Ridge VA 24064-1328
Telephone: (540) 977-0067
E-mail: gkkapp@infionline.net

New Books In the Virginia Room

Books in the Virginia Room of the Roanoke Public Library can be viewed during normal library hours.

Spring 2008

SC 917.3 G487s Some Colonial Mansions and Those who Lived in Them 2 volumes by Thomas Allen Glenn 1899 Henry T Coates & Co.

SC 929.375502 C591v Virginia Wills before 1799, A complete abstract register of all names mentioned in over 600 recorded wills, arranged alphabetically by William M Clemens 1924 Bilblio Co.

P 286.175583 M61m Mill Creek Baptist Church History 1804 - 1954 Botetourt County VA.

P 352.96 R531f Final Statement of Community Development Objectives & Projected use of Funds City of Roanoke 1994

P 975.5785 B782v Montgomery County Virginia & Virginians 1606 - 1888 by Dr. R. A. Brock Mountain Press

325.2479 B859L The Lithuanians in American 1651-1975 compiled by Algirdas M. Budreckis 1976 Oceana Press

388.4 R79t Trolley Car Treasury by Frank Rowsome 1956 McGraw- Hill

929.2 B684 B326c The Chain Rejoined by J. Ross Baughman 2005 Shenandoah History

929.2 H168 W499h History of the Halterman (Holdiman, Holeman, Haldiman) Ross, Cullers, O'Flaherty, Families of the Shenandoah Valley, VA by Wertz & Hutchinson 1973

929.2 M132g The Greenbrier McClung Way by Rheba Irene McClung 1990 Easton Printing

929.2 P293pg Payne - Golding Family History (Wiley Payne 1851 & Nancy Jane Golding 1858) Their Ancestry to Colonial Virginia Their Descendants through c1995 by Aubrey Hampton Payne 1999 Wababawab Publishing

929.3757 Y82r York County, South Carolina Court Minutes 1786-1797 by Laurence K. Wells 1981

929.3757 Y82w York County South Carolina Wills Abstracts 1787-1862 by Brent H. Holcomb 2002

975.5991 Q27w Winchester, Virginia, Streets, Churches, Schools by Garland R. Quarles 1996 Winchester- Frederick County Historical Society

975.5991092 Q27s Some Worthy Lives, Mini - Biographies of Winchester - Frederick County by Garland R. Quarles 1988 Winchester- Frederick County Historical Society

929.34521 P849 Potpourri from our files: Family Records of the Lower Eastern Shore Volume I 1996 A Project of the Lower Delmarva Genealogical Society & the Research Center for Delmarva History & Culture at SSU

363.209755 V819 1982 Virginia State Police Yearbook

363.209755 V819 1992 Virginia State Police Yearbook

779.99737 Z38b The Blue and Gray in Black and White, A History of Civil War Photography by Bob Zeller 2005 Praeger Publishers

929.3757 Y82d York County, South Carolina Deed Abstracts Volume I: Deed Books A - E 1786 - 1801 by Brent H. Holcomb 2008 SCMAR

929.375702 H697ro South Carolina's Royal Grants Volume I: Grant Book 1 through 9 1732 - 1761 by Brent H. Holcomb 2006 SCMAR

975.5912 H312h A History of Waynesboro, Virginia 1900-1976 by George R. Hawke 2007 Jostens

378.755025 R118 Radford University 1995 Alumni Directory by Radford University 1995 Bernard C. Harris Publishing Company

929.1072 Sch43m Mexican-American Genealogical Research by John Schmal & Donna Morales 2007 Heritage Books

- 973.70922 B459h **House of Abraham: Lincoln & the Todds, a family Divided** by Stephen Berry 2007 Houghton Mifflin Company
- 308 B455p **The Papers of Sir William Berkley 1605-1677** edited By Warren M. Billings 2007 Library of Virginia
- 975.503 SH35w **Why Confederates Fought** by Aaron Sherman-Dean 2007 The University of North Carolina Press
- 929.2 C62a **An American Family** by Edward N. Clopper 1950 Standard Printing & Publishing Company
- 929.375702 H697ro **South Carolina Royal Grants Volume Three: Grant Books 18 through 24 1768-1773** by Brent H. Holcomb 2008 SCMAR
- 929.375702 H697ro **South Carolina Royal Grants Volume Two: Grant Books 10 through 17 1760-1768** by Brent H. Holcomb 2008 SCMAR
- 975.8 H143h **Building the Blue Ridge Parkway** by Karen J. Hall 2007 Arcadia Publishing
- P 973.7415 N463L **List of Black Servicemen Compiled from the War Department Collection of Revolution of Revolutionary War Records** by Debra L. Newman
- 929.375915 H123d **Charleston, South Carolina City Directories for years 1816, 1819, 1822, 1825, 1829, 1830, 1831, 1835, 1836, 1837, 1838, 1840, 1841, 1849, 1852, & 1855** by James W. Hagy 2002 Genealogical Publishing
- 928.31 R441b **Baroness von Riedesel and the American Revolution, Journal & Correspondence of a Tour of Duty 1776-1783** by Marvin L. Brown, Jr. 1965 University of North Carolina
- 929.274 N877g **Genealogical Dictionary of Maine & New Hampshire** by Sybil Noyes, Charles T. Libby & Walter G. Davis 1979 Genealogical Publishing
- 929.3742 Dt81b **Vital Records of Dover, New Hampshire 1686 - 1850** by Dover Historical Society 1977
- 929.3742 St81w **Strafford County, N. H. Probate Records 1771 - 1779** by Helen F. Evans 1983 Heritage Books
- 929.374461 B657b **Boston Births, Baptisms, Marriages & Deaths 1630 - 1800** by William S. Appleton 1978 Genealogical Publishing
- 973.3149744 M112d **Divided Hearts Massachusetts Loyalists 1765 - 1790 A biographical Directory** Compiled by David E. Maas 1980 Published by The Society of Colonial Wars in the Commonwealth of Massachusetts, The New England Historic Genealogical Society
- 974.25 Sc44h **Colonial Era History of Dover, NH** by John Scales 1977 Heritage Books
- 974.900397 C57a **Annals of Swedes on the Delaware** by Jehu Curtis Clay 1938 John Ericsson Memorial Committee
- 977.185 W671h **A History of Jackson County, Ohio with index** by D. W. Williams 2001 Windmill Press
- P 929.375502 P96 **Public Officers of Virginia 1680 -1702 -1714 (3 volumes)** 2007 Mountain Press
- P 973.35 V819 **Virginia - Navy and Marines In The American Revolution** 2007 Mountain Press
- P 975.515 L349e **Eastville at a Glance** by Frances Bibbins Latimer 2004 Published by Hickory House
- P 975.515 St45h **Hog Island, Virginia** by Charles A. Sterling 2005 Hickory House
- SC 975.4 Sh28w **West Virginia in History, Life, Literature and Industry** by Morris Purdy Shawkey 1928 Lewis Publishing
- 929.2 Ok2s **Scott and Catherine Moran Okes Family** by Lonnie L. Okes Jr. 2003
- 929.3749 P53c **1671 Census of the Delaware** by Peter Stebbins Craig 1999 Published by the Genealogical Society of Pennsylvania
- 929.375502 P662m **Marriage and Death Notices from Alexandria, Virginia Newspapers Volume I 1784 -1838 & Volume 2 1838 - 1852** Compiled Wesley E. Pippenger 2005 Privately published by Compiler
- 380.14 G 487r **Roanoke Gas Company 1883 to 1997** by Robert W. Glenn, Jr. 1997

929.2 K636 F46k Kirks of Grayson County, Virginia by Compiled & Researched by Nancy Kirk Cox & Bettye-Lou Kirk Fields 1980 Gazette Press

929.2 C811 H369c A Child Will Ask ... Corbins from 1620 to 1993 by Pearl Corbin Helwig 1994 Gateway Press

912.489 G29d Kort Over Danmark 1:200.000 (Danish maps) 1976 Kobenhavn

929.2 K649 D734k The Kite Family History, Fragmentary Records in a New Nation by Merle Kite Dorius 1986

929.2 P51 P535p A Philen Heirloom Chronicle of Peter & Fereby Philen & their Descendants 1782 - 1992 Narrated & Designed by Geraldine (Chapman) Philen 1993 Gateway Press

325.2479 W499a The Armenians in American 1618 - 1976 Compiled & Edited by Vladimir Wertsman 1978 Oceana Publications

325.2495 G811 The Greeks in America 1528 - 1977 Compiled by Heike Fenton & Melvin Hecker 1978 Oceana Publications

325.253 M473a The Arabs in America 1492 - 1977 Compiled by Beverlee Turner Mehdi 1978 Oceana Publications

Searching the Family Tree

Find the list of words vertically, horizontally, diagonally, forwards and backwards.

D	A	U	G	H	T	E	R	R	D	B	G	B	W	S	N	O	H	M	X
A	S	R	G	N	I	L	B	I	S	R	C	Q	M	N	A	F	P	O	S
N	G	Q	J	E	V	Y	R	R	A	M	X	Y	S	O	T	F	E	T	A
S	O	T	S	T	N	A	D	N	E	C	S	E	D	I	U	S	D	H	D
B	O	I	J	E	N	E	D	E	E	W	M	E	A	T	R	P	I	E	O
J	I	N	T	I	V	P	A	G	S	A	G	N	Z	A	A	R	G	R	H
F	I	R	S	A	A	I	A	L	N	U	C	U	S	R	L	I	R	H	T
C	A	U	T	R	R	T	H	N	O	E	O	U	S	E	I	N	E	C	D
M	O	T	E	H	I	G	E	C	S	G	R	P	U	N	Z	G	E	R	A
C	C	N	H	R	D	D	I	T	R	N	Y	E	S	E	A	W	Q	A	D
R	T	K	E	E	I	A	R	M	A	A	L	N	N	G	T	J	V	E	Z
S	T	H	D	A	R	Y	Y	M	M	C	H	N	E	U	I	M	I	S	Q
A	F	A	M	I	L	Y	E	B	N	I	O	B	C	Q	O	T	J	E	E
X	C	O	U	R	T	H	O	U	S	E	A	U	N	T	N	M	U	R	M
L	Q	K	W	C	Q	E	V	I	T	A	L	E	R	P	N	L	X	G	P

ANCESTRY
ARCHIVES
AUNT
BIRTHDAY
CENSUS
COURTHOUSE
COUSIN
DAD
DAUGHTER
DESCENDANTS

FAMILY
FATHER
GENEALOGY
GENERATIONS
GRANDPARENTS
HERITAGE
IMMIGRATION
MAIDEN NAME
MARRY
MOTHER

NATURALIZATION
OFFSPRING
PEDIGREE
RELATIVE
RESEARCH
SIBLING
SON
SPOUSE
SURNAME
UNCLE

BELMONT SCHOOL DAYS

Today I drove through the old Belmont Hill section of South East Roanoke, just looking for anything that was there when I was a child. I lived in Michigan for many years before moving back to Roanoke. Now, everything seems strange and new.

I especially wanted to see the corner of Dale Ave. and 8th Street, the location of Belmont Elementary School. I went to school there from the first grade through the sixth grade, from 1924 to 1930. Nothing is the same – it seems strange and unfamiliar. The old brick school is gone. Instead, there is a Salvation Army church on the old school grounds. Gone are the front and back playgrounds – the front for the boys and the back for the girls. I remember how excited we all were when a slide was added to the girl's playground. I will never forget the new fire escapes that were installed when I was in the 3rd or 4th grade. They looked like tall, metal silos opening onto the second floor. A slide spiraled down inside. When we had a fire drill, we were lined up and one-by-one had to sit down and go sliding into what seemed to be a big, dark hole. Some of the children were afraid. They cried and did not want to go down.

Another vivid memory is the big, walk-in basement. The lower grades could go inside in cold or wet weather and wait for the bell to ring at 9 a.m., telling us it was time to go to class. There were benches to sit on and there was usually a teacher present to keep us reasonably quiet and orderly. The restrooms were also in the basement but separate from the main room. The basement was divided by a wall into two large rooms – one side was for boys and one side for girls. The students who couldn't go home for lunch carried their lunch in a box or a brown paper bag and ate in the basement. There wasn't a cafeteria or a gym until much later.

By today's standards, the rules and the teachers were extremely strict. Absolutely no talking to classmates was allowed and we had to raise our hands if we needed to ask the teacher a question or tell her something. Eating anything or chewing gum in class was a terrible crime. We might have to write, "I will never chew gum or eat in class again," from 50 to 100 times on the blackboard or perhaps stand in the corner or stay after school

for a week. It was humiliating to have to stand in the corner or write on the board in front of your classmates.

I had teachers who were really excellent, helpful and understanding. Other teachers were impatient, strict and crabby. But most of my memories are happy ones, especially those of my first grade teacher, Miss Crocket. Second grade was Miss Penn, younger and who wanted everything in perfect order. She went by the book; rules had to be obeyed exactly. Miss Fetters, whom we called "Miss Feathers," was my 3rd grade teacher. Fourth grade was Miss Jackson but my memories of that year are sketchy. It was a bad year for me because of my father's serious illness. I adored my Dad and I was really emotionally disturbed when he died in April of the following year. Miss Lucas was my 5th grade teacher. She was very patient, understanding and gentle following my Father's death, but again, my memories are vague of that year. Then in the 6th grade, I had Miss Dean. She was a good teacher but a very strict one. This was my last year at Belmont. I went to Jackson Junior High and many of my elementary school mates were there, too.

I have so many memories of my childhood in S. E. Roanoke. Some happy, some very sad, but Roanoke is my old hometown that I love.

Submitted by Elsie Elizabeth Franklin Spoelma
DOB: 8-15-1918
POB: Roanoke, Virginia

Delivered by: Dr. Saunders, at home
Mother: Lydia Ellen Sprinkle Franklin
Father: William Moman Franklin



African American Ancestry

Springwood Burial Park

Perhaps more than 1,000 people found their last resting place in Springwood Burial Park in Roanoke's Lincoln Terrace neighborhood between 1937 and 1979. Heavy undergrowth has since overtaken the private graveyard for Blacks, but Roanoker Robert Bird is leading a charge to recapture Springwood. The 78 year old Scout Leader has turned the clean-up of Springwood into a project for his scouts. As of the date of publication he has massed information for 767 gravesites. Of those, less than 290 are marked. Mr. Bird has graciously given the Virginia Appalachian Notes the privilege of publishing these records from his personal files. This is seasonal work, so hopefully next year the VAN will have additional burials to report.

Do you have information on Springwood, or someone buried there? Contact Robert Bird at birdnest14@cox.net or (540) 366-0996.

Additional Springwood Records

Margarette Tynan, a lifetime member of the Botetourt Genealogy Club, went through a bunch of her old Roanoke Times newspapers and submitted the following records. She is over 80 years old. We appreciate her efforts to keep the legacy of Springwood alive.

The Roanoke Times 7/23/1964

Mrs. Amanda Williams. died Tuesday of 615 Georgia Ave NW.. Hamlar Curtis

The Roanoke Times 9/1/1970

Bud French 79 died Sunday 1707 Grayson Ave NW; graveside by Hamlar Curtis

The Roanoke Times 5/13/1963

Mrs. Lucy B. Frances of 24 McDowell Ave, NW died Sunday, 1d. Virginia Mitchell; 2 sons John & Isaac ... Fizers Funeral Home

The Roanoke Times 2/4/1964

Sarah Edith Washington 1305 Loudoun Ave NW .. Funeral Tuesday by Hamlar Curtis.

The Roanoke Times 11/6/1964

Freddie R. Jones from 606 A. Gregory Ave. NE funeral Sunday by Hamlar Curtis

The Roanoke Times 11/3/1964

Mrs. Lelia B. Jones of 905 Center Ave, NW. by Fizers Chapel; burial Wednesday

The Roanoke Times 4/4/1962

Irvin Robonson of 429 Orange Ave NW died Friday burial by Hamlar Curtis

The Roanoke Times 2/27/1970

Raymond Strange 52 of 511 Gregory Ave., NE will be Saturday by Hamlar Curtis

The Roanoke Times 3/19/1965

Gladys Fulton of 905 Madison Ave., NW died Thursday w/o Theodore Fulton burial Saturday by Hamlar Curtis

The Roanoke Times 3/22/1969

**Mrs. Nathan Seay (Ida Stone Seay) of 33 11th St. SW. widow of Nathan Seay ...
Funeral Monday by Hamlar Curtis**

The Roanoke Times 3/18/1964

Willie L. Bowman 817 Gilmer Ave., NW funeral Sunday by Hamlar Curtis

The Roanoke Times 2/14/1964

Louise Willis of 19 Gainsboro Road, NE funeral Saturday at Hamlar Curtis

The Roanoke Times 6/17/1964

Margaret Willis 1008 Center Ave., NE funeral Thursday by Hamlar Curtis

The Roanoke Times 2/11/1970

**Willie James Haskins 75, of 112 Giles Ave., Vinton ...funeral Tuesday at Hamlar
Curtis**

The Roanoke Times 12/31/1966

George Smith of 1617 Downing St. NW. funeral Thursday by Fizers

The Roanoke Times 2/24/1964

Samuel H. Green 302 Loudoun Ave., NW will be Wednesday by Hamlar Curtis

The Roanoke Times 2/20/1970

Sam Harris 606 Gregory Ave., NW funeral Saturday by Hamlar Curtis

The Roanoke Times 2/7/1969

Burley Nickerson 503 Harrison Ave funeral Saturday by Hamlar Curtis

The Roanoke Times 11/24/1964

Charlie Stone, Jr. age 19 of Gregory Ave. NE. funeral Wednesday by Hamlar Curtis

The Roanoke Times 6/30/1969

Tyler W. Morton 320 Wells Ave ..funeral Tuesday at Fizers

The Roanoke Times 2/9/1969

Napoleon B. Burwell 528 McDowell Ave., NW funeral Monday by Hamlar Curtis

The Roanoke Times 3/23/1964

Edward L. Johnson 525 Fairfax Ave., NW died Friday burial by Hamlar Curtis.

The Roanoke Times 8/16/1964

Nannie Robertson 429 Orange Ave., NW funeral Monday by Hamlar Curtis

The Roanoke Times 3/31/1964

Leo Coleman 201 Chestnut Ave., NW. funeral Wednesday by Fizers

The Roanoke Times 3/4/1967

Lester King 216 First St., NW died Tuesday ...Funeral Wednesday by Fizer Funeral Chapel

The Roanoke Times 12/4/1964

Mrs. Ruth Dillard Webb age 100 of 505 Gilmer Ave., NW. Funeral Saturday by Williams Funeral Home Chapel

The Roanoke Times 5/5/1965

Annie Otey 1612 Loudon Ave., NW funeral Tuesday by Fizers

The Roanoke Times 12/2/1962

Calvin Eugene Thomas 316 Orange Ave., NW died Friday ..funeral Monday by Hamlar Curtis

The Roanoke Times 6/20/1964

Classie Robinson 1008 Center Ave., NW funeral Sunday by Hamlar Curtis.

Submitted by

Rena Worthen

Botetourt Genealogy Club President & Founder

P O BOX 1107

Buchanan, Va. 24066

doreatr@rbnet.com

SPRINGWOOD BURIAL PARK - RECORDS OF ROBERT BIRD

Map No	First	Middle	Last	Suffix	Born	Died	Stone or Marker	Mortuary	St	First	Second	Third	Fourth	Fifth	Sixth
1	ANGUS		HARLEY		1881	1950	M or S			ANGUS HARLEY	1881 1950				
2	CHARLIE	F	DANIELS		1898	1949	S			CHARLIE F. DANIELS	1898 1949				
3	BESSIE		EDWARDS		1907	1951	M	WF HUGHES		BESSIE EDWARDS	1907 1951				
4	ROSA		DRAPER		1880	1959	M	WF HUGHES		ROSA DRAPER	1880 1959				
5	WILL		EVANS		1895	1958	M	HAMLAR CURTIS		MR WILL EVANS	1895 1958				
6	MARGARET	H	FIELDS		1878	1958	S			MARGARET H. FIELDS	JAN. 6, 1878	1878 1958			
7	JOSEPHINE		POWELL		1917	1958	M	CC WILLIAMS		MRS JOSEPHINE POWELL	1917 1958				
8	AUSTRALIA	H	ADAMS		1877	1955	S			AUSTRALIA H. ADAMS	MAY 20, 1877	JUNE 23, 1955			
9	ELIZABETH	F	BOARD		1900	1959	DS			ELIZABETH F. BOARD	JULY 22, 1900	AUG. 20, 1959			
10	JAMES	F	BOARD		1876	1959	DS			JAMES F. BOARD	JUNE 10, 1876	OCT. 28, 1959			
11	LAURA		MARCH		1888	1958	M	CC WILLIAMS		MRS LAURA MARCH	1888 1958				
12	M	R	YANCEY		1895	1957	M	HAMLAR CURTIS		MRS M. R. YANCEY	1895 1957				
13	JAMIE		BROWN		1910	1957	M	CC WILLIAMS		MR JAMIE BROWN	1910 1957				
14			HOLLOWAY		1910	1957	M	CC WILLIAMS		HOLLOWAY	1910 1957				
15	BERTHA		CARPER		1912	1957	M	CC WILLIAMS		MISS BERTHA CARPER	1912 1957	1912 1957			
16	F		LEFTWICH		1910	1956	M	HAMLAR CURTIS		MRS F. LEFTWICH	1910 1956				
17	GEORGE		ELLIOTT		1887	1957	M			GEORGE ELLIOTT	1887 1957				
18	V(ictoria)	S	BARLOW		1883	1957	M			MRS V. S. BARLOW	1883 1957				
19	GEORGE	W	JOHNSON		1916	1974	M	HAMLAR CURTIS		GEORGE W. JOHNSON	1916 1974				
20	JESSIE		MORTON		1907	1960	M	WF HUGHES		MR JESSIE MORTON	MORTON	1907 1960			
21	JESSIE		MORTON		1907	1960	S			JESSIE MORTON	VIRGINIA	CPL. 3155 QM SERVICE CO	WORLD WAR II	DEC. 27, 1907	MAR. 16, 1960
22	MARIAH	A	FREEMAN		1900	1958	S			MARIAH A. FREEMAN	1900 1958				
23	DUDLEY	S	SMITH		1900	1958	S			DUDLEY S. SMITH	1900 1958				
24	M	NELLIE A	MEDLEY		1901	1959	M	HAMLAR CURTIS		M. NELLIE A. MEDLEY	1901 1959				
25	ROBERT		RIVENS		1925	1972	S			ROBERT RIVENS	VIRGINIA	PVT US ARMY	WORLD WAR II	MAY 22, 1925	APRIL 5, 1972
26	HERMAN		HERMAN		***	***	S			HERMAN					
27	HAZEL		HARRIS		1925	1973	M	HAMLAR CURTIS		MRS HAZEL HARRIS	1925 1973				
28	WALTE	L	RUCKER		1899	1972	M	HAMLAR CURTIS		MR WALTE L. RUCKER	1899 1972				
29	NANNIE	L	BROWN		1887	1957	M	WF HUGHES		NANNIE L. BROWN	1887 1957				
30	MARION		BROWN		1920	1972	M	HAMLAR CURTIS		MRS MARION BROWN	1920 1972				
31	CHARLES		ROBINSON		1904	1972	M	HAMLAR CURTIS		MR CHARLES ROBINSON	1904 1972				
32	ARTHUR	W	LEFTWICH		1901	1973	M	HAMLAR CURTIS		MR ARTHUR W. LEFTWICH	1901 1973				
33	GEORGE		WHITTEN		1869	1947	S			GEORGE WHITTEN	SEPT. 18, 1869	AUG. 15, 1947			
34	MITTIE	A	SMITH		1912	1970	M	HAMLAR CURTIS		MRS MITTIE A. SMITH	1912 1970				
35	MITTIE	A	SMITH		1911	1970	S			MITTIE A. SMITH	BORN MAR. 23, 1911	DIED FEB. 27, 1970			
36	MARY	E	NOEL		1904	1972	M	HAMLAR CURTIS		MRS MARY E. NOEL	1904 1972				
37	LEROY		CHANEY	SR	1895	1950	M	none listed		LEROY CHANEY SR	1895 1950				
38	PERCEY	T	PETTY		1884	1948	S			FATHER PERCEY T. PETTY	1884 1948	BORN JUNE 4, 1884	DIED MAY 10, 1948	AT REST	
39	JESSE	HC	BARBOUR		1909	1946	S			JESSE H.C. BARBOUR	VIRGINIA	S SGT 3211 QM SERVICE CO S	WORLD WAR II	DEC. 28, 1909	JAN. 28, 1946
40	NORWOOD	S	LANGHORN		1915	1943	S			NORWOOD S. LANGHORN	NEW YORK	S SGT 318 BASE HQ & AB SQ AAF	WORLD WAR II	JUNE 27, 1915	JULY 4, 1943
41	LEVI		BARBER	JR	1923	1938	S			LEVI BARBER JR	AUG. 26, 1923	DEC. 19, 1938	MOTHER'S DARLING		
42	WILEY		ANDERSON		1900	1939	M	none listed		MR WILEY ANDERSON	1900 1939				
43	ELOUISE		RUSSELL		1920	1939	S			MRS ELOUISE RUSSELL	DIED AUGUST 31, 1939	AGE: 18 YRS., 9 MOS., 27 DAYS			
44	ISABELL		HANCOCK		1874	1947	M or S			MRS ISABELL HANCOCK	1874 1947				
45	ANDREW	TOM	CROAN		1915	1972	S			TOM ANDREW T. CROAN	1915 1972	MAY 24, 1915	SEPT. 27, 1972		
46	CLARENCE	C	SPEARS		1882	1959	S			CLARENCE C. SPEARS	OCT. 9, 1882	APR. 30, 1959			
47	THOMAS	E	EDWARDS		***	***	M			MR THOMAS E. EDWARDS	1904 1957				
48	WILLIAM		BROWN		1904	1957	M	HAMLAR CURTIS		MR WILLIAM BROWN	1904 1957				
49	LERA		EDWARDS		1893	1957	M	CC WILLIAMS		MISS LERA EDWARDS	1893 1957				
50	CHRISS		SESSION		1891	1970	M	FIZER		MR CHRISS SESSION	1891 1970	1891 FIZER FUNERAL HOME	1970		
51	CHRISS		SESSION		1891	1970	S			CHRISS SESSION	PVT US ARMY	WORLD WAR I	AUG. 9, 1891	APRIL 17, 1970	
52	HERBERT	V	PASCHEL	JR	1968	1973	M	HAMLAR CURTIS		MAS HERBERT V. PASCHEL JR	1968 1973				
53	W	M	GAITHER		1896	1957	M	HAMLAR CURTIS		MRS W. M. GAITHER	1896 1957				
54	N		WOODY		1896	1957	S			N. WOODY	1896 1957				
55	ETHEL	E	MOORE		1888	1957	S			MRS Ethel E. Moore	Born January 8, 1888	Died September 14, 1957			
56	ALICE	D	BELL		1881	1954	S			ALICE D. BELL	MAY 9, 1881	AUG. 28, 1954	GONE, BUT NOT FORGOTTEN		
57	MILTIDA		GRANT		1865	1947	S			MILTIDA GRANT	1865 1947	THE LORD IS MY SHEPHERD			
58	WILLIE		GORDON		1889	1952	S			WILLIE GORDON	1889 1952				
59	WILLIAM		BEAVER		***	1951	M	none listed		WM BEAVER	1951				
60	BERTHA	E	COLSTON		1894	1948	M	WF HUGHES		BERTHA E. COLSTON	1894 1948				
61	PINKEY		DAY		1909	1951	M	CC WILLIAMS		PINKEY DAY	1909 1951				
62	BLANCHE	W	AVERY		1910	1948	S			BLANCHE W. AVERY	APR. 12, 1910	SEPT. 18, 1948	IN LOVING MEMORY		
63	EDWARD		BOOKER		1903	1953	S			EDWARD BOOKER	VIRGINIA	PFC CO B 320 SERVICE BN QMC	WORLD WAR I	MAY 2, 1903	JAN. 14, 1953
64	BETTIE		JOHNSON		***	1953	S			MRS Bettie Johnson	DIED APRIL 14, 1953				
65	DELLA		BARBOUR		1871	1953	S			DELLA BARBOUR	JULY 4, 1871	APRIL 1, 1953			
66	CLOTEAL	E	COLEMAN		1933	1955	S			CLOTEAL E. COLEMAN	1933 1955				
67	NORMAN	S	ROBERTSON		1887	1946	S			NORMAN S. ROBERTSON	JULY 2, 1887	NOV. 29, 1946			
68	GRACE		HAWKINS		1891	1952	M	WF HUGHES		GRACE HAWKINS	1891 1952				
69	ARTHUR	B	COLSTON		1894	1954	S			ARTHUR B. COLSTON	VIRGINIA	PFC CO H 370 INFANTRY	WORLD WAR I	APRIL 16, 1894	JULY 26, 1954
70	NORA	B	CRAIG		1869	1954	S			NORA B. CRAIG ROBERTSON	MAR. 4, 1869	JULY 15, 1954			
71	LOUISE		WEBB		1905	1956	M	HAMLAR CURTIS		MRS LOUISE WEBB	1905 1956				
72	MARY	ELLIS	WALLER		1893	1956	S			MARY ELLIS WALLER	FEB. 15, 1893	JULY 5, 1956			
73	CORA		CAMPBELL		1894	1972	M	HAMLAR CURTIS		MRS CORA CAMPBELL	1894 1972				
74	HUGHIE	H	JONES		1902	1973	M	HAMLAR CURTIS		MR HUGHIE H. JONES	1902 1973				
75	BILL	G	CURTIS		1909	1972	M	none listed		MR BILL G. CURTIS	1909 1972				
76	BILL	G	CURTIS		1909	1972	S			BILL G. CURTIS	BORN APR. 18, 1909	DIED OCT. 25, 1972			

Map No	First	Middle	Last	Suffix	Born	Died	stone or Marker	Mortuary	St U	First	Second	Thrd	Fourth	Fifth	Sixth
74	J		STAMPS		1864	1957	M	HAMLAR CURTIS		MRS J. STAMPS	1890 1955				
75	VIRGINIA		HEBRON		1924	1951	M	WF HUGHES		VIRGINIA HEBRON	1884 1957				
76	HENRY		FLIPPIN		1895	1950	S			HENRY FLIPPIN	1924 1951				
77	CLAYBORN		TAYLOR		1893	1944	S			CLAYBORN TAYLOR	VIRGINIA				
78	H	PATT	ROBERTSON		1908	1940	S			H. PATT ROBERTSON	VIRGINIA				
79	LYLBURN	C	SAUNDERS		1916	1941	S			LYLBURN C. SAUNDERS	JUNE 17, 1908				
80	BEN		WOODS		1916	1941	S			U.S.	1916 1941				
81	SAMUEL		HOWARD	JR	1897	1949	S			SAMUEL HOWARD JR	BEN WOODS				
82	RENA	M	THOMPSON		1920	1951	M	CC WILLIAMS		RENA M. THOMPSON	SEPT. 7, 1897				
83	MARTHA	A	HOWARD		1900	1956	S			MOTHER	1920 1951				
84	NORA		THOMPSON		1869	1952	M	WF HUGHES		NORA THOMPSON	MARTHA A. HOWARD				
85	ANNA	L	SMITH		1868	1944	S			ANNA L SMITH	1869 1952				
86	LUCIOUS		GLENN		1900	1951	M	HAMLAR CURTIS		LUCIOUS GLENN	JUNE 7, 1868				
87	GERTIE	L	MATTOX		1885	1967	S			GERTIE L. MATTOX	1900 1951				
88	ANNA		TRENT		1885	1949	M	CC WILLIAMS		MRS ANNA	APRIL 7, 1895				
89	JULIUS	C	TAYLOR		1907	1969	S			JULIUS C. TAYLOR	TRENT				
90	EMMA	B	PENN		1869	1971	M	none listed		MRS EMMA B	VIRGINIA				
91	GEORGIA		JONES		1901	1957	M	CITIZENS		MRS GEORGIA JONES	PENN				
92	EMMA	A	CLEMENT		1886	1951	M	WF HUGHES		EMMA CLEMENT	1901 1957				
93	RICHARD	C	STOVALL		1927	1969	S			RICHARD C. STOVALL	1886 1951				
94	SHERMAN	W(yse)	STOVALL		1885	1956	S			SHERMAN W. STOVALL	VIRGINIA				
95	DAISY	E	SCHLEY		1883	1956	DS			SCHLEY	VIRGINIA				
96	WILLIAM	S	SCHLEY		1883	1941	DS			SCHLEY	WILLIAM S. DAISY E.				
97	JAMES	D	WALKER		1878	1944	DS			WALKER	WILLIAM S. DAISY E.				
98	MAGGIE	A	WALKER		1878	1952	DS			WALKER	REV JAMES D. MAGGIE A.				
99	MITTIE		PINNIX		1878	1952	DS			WALKER	REV JAMES D. MAGGIE A.				
100	RUFFIN	A	TYNER		1888	1965	DS			MITTIE PINNIX	DIED JUNE 1, 1972				
101	MARY	E	TYNER		1889	1973	DS			TYNER	RUFFIN A. MARY E.				
102	CAMILLA	S	CROAN		1881	1969	S			TYNER	RUFFIN A. MARY E.				
103	JOSHIA		WATKINS		1880	1967	S			CAMILLA S. CROAN	MAY 24, 1888				
104	ELMER	L	BOYER		1923	1946	S			JOSH WATKINS	VIRGINIA				
105	FLOYD	W	WILLIAMS		1892	1954	S			ELMER BOYER	OCTOBER 5, 1923				
106	FLOYD	W	WILLIAMS		1892	1954	M			FLOYD W. WILLIAMS	VIRGINIA				
107	LAWRENCE		WARD		1896	1956	S			***	WILLIAMS				
108	FRED	OLEAN	SAUNDERS		1930	1979	S			LAWRENCE WARD	VIRGINIA				
109	THOMAS	N	MILLBERRY		1875	1939	S			FRED OLEAN SAUNDERS	PVT US ARMY				
110	WILLIAM		HARRIS		1897	1958	S			THOMAS N. MILLBERRY	SEPT 16, 1875				
111	WILLIAM	H	PLENTY		1892	1968	S			WILLIAM HARRIS	MAR 7, 1897				
112	LEETEE	O	***		1946	1948	M	none listed		WILLIAM H. PLENTY	PVT BTRY B 19 REGT ARTY CAC				
113	CALLIE	E	BANNER		1888	1961	S			MR LEETEE O	1946 1948				
114	LUCY	BELL	FRANCIS		1883	1963	S			J H HURT	FAMILY				
115	ROBERTA	P	TURNER		1894	1938	S			CALLIE BANNER	JAN 7, JULY 17,				
116	RUTH	M	TURNER		1923	1940	S			LURY BELL FRANCIS	JAN 10, 1883				
117	AUGUSTAS	D	TURNER		1893	1951	S			MOTHER	ROBERTA P. TURNER				
118	EUNICE	TURNER	LANE		1921	1968	S			DAUGHTER	RUTH M. TURNER				
119	ALFRED	R	HUNTER		1892	1961	S			FATHER	AUGUSTAS D. TURNER				
120	WILLIAM	HERBERT	GRANT		1883	1945	S			DAUGHTER	EUNICE TURNER LANE				
121	BENJAMIN	P	JEFFERSON		1894	1957	S			ALFRED R. HUNTER	VIRGINIA				
122	MATTIE	B	SALTERS		1892	1966	S			WILLIAM HERBERT GRANT	SEPT 29, 1883				
123	AMOS		PARKER		1868	1944	M	none listed		?	N. JACKLIN				
124	LEO		WOODS		1897	1957	S			BENJAMIN P. JEFFERSON	VIRGINIA				
125	LANDONIA	S	FIELDS		1883	1951	S			MATTIE B. SALTERS	MAR 6, 1892				
126	WOODSON	W	EDWARDS		1892	1967	S			BURWELL	BURWELL				
127	TINSLEY	L	FISHBURN		1897	1963	S			AMOS PARKER	PASSED ON				
128	RAYMOND		CLAY		1911	1974	M	none listed		LEO WOODS	SON OF				
129	SAMUEL	D	WATSON		1922	1960	S			LANDONIA S. FIELDS	AUG 28, 1883				
130	CHARLIE	JAMES	ROBINSON		1915	1962	M	FIZER		WOODSON W. EDWARDS	VIRGINIA				
131	HAVANA	E	SINGLETON		1910	1960	M	FIZER		TINSLEY L. FISHBURN	1897 1963				
132	MARGIE	S	TERRY		1913	1960	S			RAYMOND CLAY					
133	MARGIE	S	TERRY		1913	1960	M	HAMLAR CURTIS		SAMUEL D. WATSON	APRIL 10, 1922				
134	FRANK		LANDERS	SR	1902	1960	M	HAMLAR CURTIS		MR CHARLIE	JAMES ROBINSON				
135	TAW		POINDEXTER		1877	1951	S			MRS HAVANA E	SINGLETON				
136	ALEXANDER	H	BRAXTON		1885	1951	DS			MARGIE S. TERRY	1913 1960				
137	JERRY	PRESTON	SMITH		1910	1959	S			MARGIE S	TERRY				
138	ABIE		***		1907	1957	M	none listed		FRANK LANDERS SR	AGE 57				
139	ADDIE	JANE	EVERETT		1893	1967	S			TAW POINDEXTER	NOV 11, 1877				
140	TOM		WILLIAMS		1880	***	S			BRAXTON	KNOXIE B RICH ALEXANDER H				
141	ROBERT		BOARD		1892	1960	S			JERRY PRESTON SMITH	VIRGINIA				
142	BESSIE	L	JOHNSON		1898	1962	S			MRS ABIE	?				
143	MUNGIE		WARREN		1891	1963	M	FIZER		ADDIE JANE EVERETT	MARCH 8, 1893				
144	SOPHRONIA	L	BATMON		1891	1979	S			TOM WILLIAMS	OCT 16, 1880				
145	JAMES	L	EASLEY		1930	1966	S			ROBERT BOARD	VIRGINIA				
146	JAMES	L	EASLEY		1930	1966	S			BESSIE L. JOHNSON	1895 1962				
147	JAMES	L	EASLEY		1930	1966	S			MR MUNGIE WARREN	1891 1963				
148	JAMES	L	EASLEY		1930	1966	S			SOPHRONIA L. BATMON	JULY 28, 1891				
149	JAMES	L	EASLEY		1930	1966	S			JAMES L. EASLEY	AUG. 17, 1930				

VIRGINIA DEPT OF ARCHIVES

Map No	First	Middle	Last	Suffix	Born	Died	Stone or Marker	Mortuary	St	First	Second	Third	Fourth	Fifth	Sixth
150	GERTRUDE		BELL		1881	1967	S			MOTHER	GERTRUDE BELL	MAR. 20, 1881	MAR. 2, 1967		
151	BURLEY		NICKERSON		***	1969	S			BURLEY NICKERSON	DIED FEB. 4, 1969				
152	FANNIE	P	BURNS		1900	1967	S			FANNIE P. BURNS	MAR. 4, 1900	MAR. 28, 1967			
153	WALTER	J	GOODRICH		1894	1968	S			WALTER J. GOODRICH	PVT US ARMY	WORLD WAR I	APRIL 9, 1894	FEB 10, 1968	
154	VIVIAN	E	BROWN		1897	1968	M	CC WILLIAMS		VIVIAN E. BROWN	1897 1968				
155	LEWIS	H	REAMEY		1865	1961	S			LEWIS H. REAMEY	MARCH 15, 1865	MARCH 2, 1961			
156	SAMUEL	VIVIAN	POE		1894	1968	MP			SAMUEL VIVIAN POE	VIRGINIA	PFC US ARMY	WORLD WAR I	FEB 23, 1894	SEPT 29, 1968
157	J	A	CROAN		1877	1940	S			J. A. CROAN	1887 1940				
158	JAMES	H	TERRY		1922	1963	S			JAMES H. TERRY	MARYLAND	PVT 4190 QM SERVICE CO	WORLD WAR II	DEC 3, 1922	SPET 13, 1963
159	MAGGIE		EDWARDS		1877	1960	S			MRS MAGGIE EDWARDS	1877 1960				
160	WILLIAM	A	SMITH		1860	1960	S			WILLIAM A. SMITH	DEC 15, 1860	MAR. 10, 1960			
161	ROBERT	M	THOMPSON		1934	1969	S			ROBERT M. THOMPSON	VIRGINIA	PFC US ARMY	KOREA	APR 8, 1934	JUNE 1, 1972
162	RAYMOND		ROSS	JR	1930	1949	S			RAYMOND ROSS JR.	AUG. 9, 1930	JULY 31, 1949			
163	ELIZABETH	B	FISHBURN		1901	1972	S			ELIZABETH B. FISHBURN	1901 1972				
164	ORIN	J	WATSON		1890	1956	S			ORIN J. WATSON	FEB 4, 1890	JULY 10, 1956			
165	SARAH	E	WASHINGTON		1897	1964	S			REST IN PEACE	MRS SARAH E. WASHINGTON	DEC. 27, 1897	FEB 1, 1964		
166	B	C	WASHINGTON		1889	1964	S			REV B. C. WASHINGTON	JUNE 7, 1889	MAY 5, 1964			
167	WM	H	GREEN		***	***	M			REV WM H GREEN					
168	FLORENCE		SNYDER		1897	1947	S			MRS FLORENCE SNYDER	JAN 17 1897	OCT 30 1947			
169	ELLA		BALDWIN		1909	1970	M	HAMLAR CURTIS		MRS ELLA BALDWIN	1909 1970				
170	SAMUEL		DIVERS		***	***	S			SAMUEL DIVERS	AGED 75 YEARS				
171	FRANCES	ANN	FLIPPEN		1936	1956	S			FRANCES ANN FLIPPEN	FEB 12, 1936	MAY 13, 1956			
172	ELLIS	M	WARREN		1897	1957	S			ELLIS M	WARREN	FEB 3, 1897	DEC. 1, 1958		
173	MATTIE		EASLEY		1890	1975	S			MATTIE EASLEY	JUNE 22, 1890	JUNE 11, 1975			
174	BEATRICE	C	EASLEY		1909	1956	S			BEATRICE C. EASLEY	JUNE 22, 1890	JUNE 11, 1956			
175	HOWARD		MEDOWS		1922	1957	M	CITIZENS		HOWARD MEDOWS	1922 1957				
176	OSCAR		JONES	JR	1924	1957	S			OSCAR JONES JR.	1924 1957				
177	MARY	C	BROWN		1924	1957	M	HAMLAR CURTIS		MISS MARY C BROWN	1924 - 1957				
178	COLUMBUS	F	HOUCHEINS		1890	1961	S			COLUMBUS F. HOUCHEINS	VIRGINIA	PVT 154 DEPOT BRIGADE	WORLD WAR I	AUG 2, 1890	JULY 10, 1961
179	GLADYS	L	FULTON		1908	1965	DS			FULTON	GLADYS L	1908 - 1965			
180	THEODORE		FULTON		1906	1962	DS			FULTON	THEODORE	1906 - 1962			
181	LUCY	F	SMITH		1898	1960	S			LUCY F SMITH	1898 1960				
182	WALTER	D	BROWN		1894	1961	S			WALTER D. BROWN	JUNE 6, 1894	OCT. 4, 1961			
183	ALFRED		FUQUA		1888	1963	S			ALFRED FUQUA	VIRGINIA	CPL 1 CO 1 DEVELOPMENT BN	WORLD WAR I	FEB 4, 1888	MARCH 5, 1963
184	EMELL		CRAWLEY		1881	1949	DS			CRAWLEY	EMELL	MARCH 10, 1881	DEC 1, 1949		
185	MARY	J	CRAWLEY		1881	1955	DS			CRAWLEY	MARY J	DEC 18, 1881	MAY 5, 1955		
186	RUSSELL		JOPLIN		1894	1950	MP			RUSSELL JOPLIN	VIRGINIA	VUGLER 511 ENGINEERS	WORLD WAR I	SEPT 19, 1894	MARCH 16, 1950
187	INFANT		ALEXANDER		1956	1956	M	WF HUGHES		INFANT ALEXANDER					
188	BUFORD	A	FRENCH		1944	1948	S			BUFORD A. FRENCH	JUNE 14 NOV. 8	1944 1948			
189	BABY	BOY	SALTER		1962	1962	M	FIZER		BABY BOY	SALTER 1962				
190	BABY	BOY	JACKSON		1962	1962	M	FIZER		BABY BOY	JACKSON 1962				
191	GEORGIE		LEE		1890	1949	S			MOTHER	GEORGIE LEE	1890 1949			
192	LUKE	E	JOHNSON		1900	1964	S			LUKE E. JOHNSON	1900 1964				
193	***		JEFFERIES		***	***	GM	none listed		... Jefferies					
194	JIMMY	D	COOPER		***	***	M	none listed		MR. JIMMY D. COOPER					
195	BETTY		MAYS		1956	1956	M	WF HUGHES		BETTY MAYS	1956				
196	DELORES	ANN	WADE		1968	1969	M	none listed		DELORES ANN WADE	1968 1969				
197	MARIE	A	BOARD		1915	1973	M	none listed		MRS MARIE A	BOARD	1915 1973			
198	ELIZABETH		MEADOWS		1907	1973	M	HAMLAR CURTIS		MRS. ELIZABETH	MEADOWS	1907 1973			
199	FRANCES	E	TERRY		1940	1972	M	HAMLAR CURTIS		MRS. FRANCES E	TERRY	1940 1972			
200	THOMAS		MARSHALL		1910	1970	M	HAMLAR CURTIS		MR. THOMAS	MARSHALL	1910 1970			
201					1918	1969	M	HAMLAR CURTIS	U			1918 1969			
202	ARTHUR		JONES		1897	1968	S			ARTHUR JONES	VIRGINIA	PFC CO 1 6 PIONEER INF	DEC 10, 1897	OCT 19, 1968	
203	ANNIE		WHALES		1888	1949	M	CC WILLIAMS		ANNIE WHALES	1888 1949				
204	LULA	B	ARRINGTON		1882	1952	M	CC WILLIAMS		MRS LULA B	ARRINGTON	1882 1952			
205	JOHN	HENRY	JOHNSON		1926	1957	S			JOHN HENRY JOHNSON	VIRGINIA	STM2 USNR	WORLD WAR II	MARCH 28, 1926	MARCH 16, 1957
206	RALPH	NELSON	NAPIER		1926	1954	MP			RALPH NELSON NAPIER	VIRGINIA	TEC 5 640RD AMMUNITION CO	WORLD WAR II	OCT. 21, 1926	SEPT. 12, 1954
207	BERTHA		HARPER		***	***	M	none listed		***					
208	JESTER	L	DENT		1897	1957	M	HAMLAR CURTIS		MR JESTER L	DENT	1897 1957			
209	MARGARET		TUCKER		1897	1957	M	WF HUGHES		MARGARET TUCKER	1897 1957				
210	CLARENCE		HURT		1910	1955	M	none listed		MR. CLARENCE HURT	1910 1955				
211	LETHA	BELLE	ROSE		1890	1956	M	WF HUGHES		LETHA BELLE ROSE	1890 1956				
212	ROSA		CANADAY		***	***	S			MRS ROSA CANADAY					
213	REBECCA		A. N.		1872	1958	M	HAMLAR CURTIS		MRS REBECCA	A. N., EDR	1872 1958			
214	RACHEL		JOHNSON		1890	1953	M	WF HUGHES		RACHEL JOHNSON	1890 1953				
215	WILLIAM	BLACK	***		1956	1956	M	none listed		WILLIAM BLACK	***	1956			
216	JAMES		STEVENS		1876	1955	M	WF HUGHES		JAMES STEVENS	1876 1955				
217	FRANK		JAMES		***	***	GM			MR. FRANK JAMES	***				
218	WILLIAM		THOMAS		1910	1955	M	CITIZENS		WILLIAM THOMAS	1910 1955				
219					1942	1942	AM	none listed	U	***		DEC 7 1942			
220	CHARLIE	A	GUNN		***	1941	S			CHARLIE A. GUNN	VIRGINIA	PVT. 155 DEPOT BRIG.	MAY 14, 1941		
221	SAMUEL		DAVIS		1880	1946	M	WF HUGHES		SAMUEL DAVIS	1880 1946				
222	HAYWOOD		SUMMERS		1884	1943	MP			HAYWOOD SUMMERS	1884 1943				
223	MARY	E	BARLOW		1935	1944	M	WF HUGHES		MARY E BARLOW	1935 1944				
224	JOE	C	WITCHER		1874	1949	M	HAMLAR CURTIS		MR JOE C WITCHER	1874 1949				
225	WILLIAM		AKERS		1876	1955	M	WF HUGHES		WILLIAM AKERS	1876 1955				
226	SAMUEL		CALLAWAY		1889	1956	S			SAMUEL CALLAWAY	VIRGINIA	PFC 510 BN ENGR CORPS	MARCH 2, 1889	JAN 29, 1956	
227	LOIS		FEAGANS		***	***	AM			LOIS FEAGANS	missing	missing			

Map No	First	Middle	Last	Suffix	Born	Died	Stone or Marker	Mortuary	St	First	Second	Third	Fourth	Fifth	Sixth
228	LL		WALLER				M	WF HUGHES							
229	JOHN	B	SMITH		1913	1974	M	HAMLAR CURTIS		MR JOHN B. SMITH	1913 1974				
230	KATE	W	JONES		1881	1945	S			KATE W JONES	BORN 1881		DIED APRIL 7, 1945		
231	EMMA		HAIRSTON		1899	1945	M	WF HUGHES		EMMA HAIRSTON	1899 1945				
232	LILLIE	DICKERSON	KEELING		1908	1958	M	HAMLAR CURTIS		MRS LILLIE DICKERSON	KEELING		1908 1958		
233	CORA		WHITTEN		1896	1958	M	HAMLAR CURTIS		MRS CORA WHITTEN	1896 1958				
234	CHARLES		SCOTT		1911	1949	S			CHARLES SCOTT	VIRGINIA	PFC 92 ENGR GEN SERVICE REGT	WORLD WAR II	FEB 28 1911	AUG 19 1949
235	WALTER		JOHNSON		1887	1950	S			WALTER JOHNSON	FEB 5, 1887		MAY 4, 1950		
236	LEVI		FRANCIS		1879	1950	M	WF HUGHES		LEVI FRANCIS	1879 1950				
237	THOMAS		IRVING		1891	1948	M	WF HUGHES		THOMAS IRVING	1891 1948				
238	MARY		THOMPSON		1914	1951	M	CC WILLIAMS		MARY THOMPSON	1914 1951				
239	MASTEN	O	LAW		1921	1944	TM	WF HUGHES		MASTEN O. LAW	1921 1944				
240	MIN	A	TINSLEY		***	***	AM			MIN A TINSLEY					
241	PEACHIE		BROWN		1871	1965	M			MRS PEACHIE	BROWN	1871 1965			
242	NOLA		LOVELACE		1898	***	AM			NOLA LOVELACE	1898 ***				
243	JAMES	R	HUNTER				S								
244	JAMES	H	COOPER		1864	1955	S								
245	MATTIE		COOPER		1873	1967	S								
246	THOMAS	H	BANNER		1877	1949	S			THOMAS H. BANNER	AUG. 7, 1877		FEB. 4, 1969		
247	TOM		MILLNER		1870	1951	M	WF HUGHES		TOM MILLNER	***				
248	***		HUNTER				MP			HUNTER FAMILY					
249	BABY	BOY	HAM		1963	1963	M			BABY BOY HAM	1963				
250	JOHN		HENDERSON		***	***	M	WF HUGHES		JOHN HENDERSON	***				
251	***		CALLOWAY		1959	1961	M	CITIZENS		***	CALLOWAY				
252	FRANCIS		EARLEY		1919	1967	M	HAMLAR CURTIS		MISS FRANCIS	EARLEY		1919 1967		
253	ROYAL		HAYDEN		1898	1976	M	HAMLAR CURTIS		MR ROYAL HAYDEN	1898 1976				
254	WILLIE		GRAY	JR	1914	1966	M			MR WILLIE GRAY	1914 1966				
255	JOHN	H	***		***	***	M			MR JOHN H	***				
256	***		***		19**	1969	M	HAMLAR CURTIS		***	***	19 1969			
257	WINFRED	JAMES	FRANKLIN	SR	1905	1962	S			WINFRED JAMES	FRANKLIN SR	MAR. 27, 1905		APR 7, 1962	
258	WINFRED	JAMES	FRANKLIN	SR	1905	1962	M			***	JAMES FRANKLIN	1905 1962			
259	HESTER		***		1911	1970	M			MRS HESTER	***	1911 1970			
260	VINNIE		WILLIAMS		1905	1962	S			VINNIE WILLIAMS	MAR. 27, 1905		APR 7, 1962		
261	CHARLIE		STONE	JR	1925	1964	S			CHARLIE STONE JR	VIRGINIA	CPL US MARINE CORPS RES	WORLD WAR II	JUNE 2 1925	NOV 22 1964
262	FRANK	S	SUMMERALL		1963	1979	M	FIZER		FRANK S	UMMERALL	1963 1979			
263	MAGGIE	H	SMITH		1884	1970	S			MAGGIE H. SMITH	NOV. 23, 1884		MAR. 28, 1970		
264	LULA		MOTEN		1868	1974	S			LULA MOTEN	1868 - 1974				
265	ROBERT	S	HOLMES		1896	1969	S			ROBERT S HOLMES	VIRGINIA	PFC MED DET 535 ENGINEERS	WORLD WAR II	SEPT 17 1896	JAN 6 1969
266	ALBERT		BATMON		1896	1969	S			ALBERT BATMON	APR 1, 1896		JAN 2, 1969		
267	LEWIS	W	REAMY		1865	1961	S			LEWIS W REAMY	MARCH 15, 1865		MAY 2, 1961		
268	ROSIE	L	RO ERTSON		***	***	M			MRS ROSIE L	ROBERTSON	***			
269	EVANS	F	BALDWIN		1904	1969	S			EVANS F. BALDWIN	MISSISSIPPI	PFC 1318 SVC COMD UNIT	WORLD WAR II	MAY 17, 1904	DEC 17, 1969
270	***		JUMPER		1904	1970	M	HAMLAR CURTIS		***	JUMPER	1904 1970			
271	C RA	G	WILLIAMS		1904	1969	M	HAMLAR CURTIS		C RA G	WILLIAMS	1904 1969			
272	PAULINE	E	WEBSTER		1919	1976	M	FIZER		MRS PAULINE	E. WEBSTER	1919 1976			
273	ROVANNA		***		***	***	M			MRS ROVANNA	***				
274	ANNIE	MAE	JAMES		1911	1960	M			MRS ANNIE	MAE JAMES	1911 1960			
275	FRED	D	FRACTION		1910	1960	S			FRED D FRACTION	VIRGINIA	SGT 1329 SERVICE COMD UNIT	WORLD WAR II	SEPT 3 1910	JUNE 18 1960
276	ADDIE		EVERETT		1893	1967	M	HAMLAR CURTIS		MISS ADDIE	EVERETT	1893 1967			
277	***		***		***	***	AM			***	***				
278	JOSEPH	WILLIAM	BUCKNER	SR				WF HUGHES							
279	JOSEPH	WILLIAM	BUCKNER	JR			MP	WF HUGHES							
280	CL		COMPTON		***	1953	S			MRS CL. COMPTON	1953				
281	HOWARD		COWAN				M	HAMLAR CURTIS							
282	JAMES		COWAN			1969	M	HAMLAR CURTIS							
283	MELANIE		COWAN				M	HAMLAR CURTIS							

Springwood Burial Park
Alphabetical List of Some Identified Graves

<u>LAST NAME</u>	<u>FIRST NAME</u>	<u>BIRTH YEAR</u>	<u>DEATH YEAR</u>
A....N..	REBECCA	1872	1958
ADAMS	AUSTRALIA H	1877	1955
AKERS	WILLIAM	1876	1955
ALEXANDER	INFANT	1956	1956
ANDERSON	WILEY	1900	1939
ARRINGTON	LULA B	1882	1952
AVERY	BLANCHE W	1910	1948
BALDWIN	EVANS F	1904	1969
BALDWIN	ELLA	1909	1970
BANNER	CALLIE E	1888	1961
BANNER	THOMAS H	1877	1949
BARBER JR	LEVI	1923	1938
BARBOUR	DELLA	1871	1953
BARBOUR	JESSE HC	1909	1946
BARLOW	MARY E	1935	1944
BARLOW	V(ictoria) S	1883	1957
BATMON	SOPHRONIA L	1891	1979
BATMON	ALBERT	1896	1969
BEAVER	WILLIAM	1951	
BELL	ALICE D	1881	1954
BELL	GERTRUDE	1881	1967
BOARD	ROBERT	1892	1960
BOARD	MARIE A	1915	1973
BOARD	JAMES F	1876	1959
BOARD	ELIZABETH F	1900	1958
BOOKER	EDWARD	1903	1953
BOYER	ELMER L	1923	1946
BRAXTON	ALEXANDER H	1885	1951
BROWN	PEACHIE	1871	1965
BROWN	JAMIE	1910	1957
BROWN	VIVIAN E	1897	1968
BROWN	MARY C	1924	1957
BROWN	WALTER D	1894	1961
BROWN	NANNIE L	1887	1957
BROWN	MARION	1920	1972
BROWN	WILLIAM	1904	1957
BUCKNER SR	JOSEPH WILLIAM		
BURNS	FANNIE P	1900	1967
BURWELL			
CALLAWAY	SAMUEL	1889	1956
CALLOWAY		1959	1961
CAMPBELL	CORA	1894	1972
CANADAY	ROSA		
CARPER	BERTHA	1912	1957
CHANEY SR	LEROY	1895	1950

CLAY	RAYMOND	1911	1974
CLEMENT	EMMA A	1886	1951
COLEMAN	CLOTEAL E	1933	1955
COLSTON	ARTHUR B	1894	1954
COLSTON	BERTHA E	1894	1948
COMPTON	CL...	1953	
COOPER	JAMES H	1864	1955
COOPER	MATTIE	1873	1967
COOPER	JIMMY D		
COWAN	HOWARD		
COWAN	JAMES	1969	
COWAN	MELANIE		
CRAIG	NORA B	1869	1954
CRAWLEY	EMELL	1881	1949
CRAWLEY	MARY J	1881	1955
CROAN	CAMILLA S	1881	1969
CROAN	J A	1877	1940
CROAN	ANDREW TOM	1915	1972
CURTIS	BILL G	1909	1972
DAVIS	SAMUEL	1880	1946
DAY	PINKEY	1909	1951
DENT	JESTER L	1897	1957
DIVERS	SAMUEL		
DRAPER	ROSA	1880	1959
EARLEY	FRANCIS	1919	1967
EASLEY	MATTIE	1890	1975
EASLEY	JAMES L	1930	1966
EASLEY	BEATRICE C	1909	1956
EDWARDS	WOODSON W	1892	1967
EDWARDS	MAGGIE	1877	1960
EDWARDS	BESSIE	1907	1951
EDWARDS	THOMAS E		
EDWARDS	LEA	1893	1957
ELLIOTT	GEORGE	1887	1957
EVANS	WILL	1895	1958
EVERETT	ADDIE	1893	1967
EVERETT	ADDIE JANE	1893	1967
FEAGANS	LOIS		
FIELDS	LANDONIA S	1883	1951
FIELDS	MARGARET H	1878	1958
FISHBURN	TINSLEY L	1897	1963
FISHBURN	ELIZABETH B	1901	1972
FLIPPEN	FRANCES ANN	1936	1956
FLIPPIN	HENRY	1896	1950
FRACTION	FRED D	1910	1960
FRANCIS	LUCY BELL	1883	1963
FRANCIS	LEVI	1879	1950
FRANKLIN SR	WINFRED JAMES	1905	1962
FREEMAN	MARIAH A	1900	1958

FRENCH	BUFORD A	1944	1948
FULTON	GLADYS L	1908	1965
FULTON	THEODORE	1906	1962
FUQUA	ALFRED	1888	1963
GAITHER	W M	1896	1957
GLENN	LUCIOUS	1900	1951
GOODRICH	WALTER J	1894	1968
GORDON	WILLIE	1889	1952
GRANT	MILTIDA	1865	1947
GRANT	WILLIAM HERBERT	1883	1945
GRAY JR	WILLIE	1914	1966
GREEN	WM H		
GUNN	CHARLIE A	1941	
HAIRSTON	EMMA	1899	1945
HAM	BABY BOY	1963	1963
HANCOCK	ISABELL	1874	1947
HARLEY	ANGUS	1881	1950
HARPER	BERTHA		
HARRIS	WILLIAM	1897	1958
HARRIS	HAZEL	1925	1973
HAWKINS	GRACE	1891	1952
HAYDEN	ROYAL	1898	1976
HEBRON	VIRGINIA	1924	1951
HENDERSON	JOHN		
HERMAN	HERMAN		
HOLLOWAY		1910	1957
HOLMES	ROBERT S	1896	1969
HOUCHINS	COLUMBUS F	1890	1961
HOWARD	MARTHA A	1900	1956
HOWARD JR	SAMUEL	1897	1949
HUNTER	JAMES R		
HUNTER			
HUNTER	ALFRED R	1892	1961
HURT	J H		
HURT	CLARENCE	1910	1955
IRVING	THOMAS	1891	1948
JACKSON	BABY BOY	1962	1962
JAMES	FRANK		
JAMES	ANNIE MAE	1911	1960
JEFFERIES			
JEFFERSON	BENJAMIN P	1894	1957
JOHNSON	BESSIE L	1898	1962
JOHNSON	GEORGE W	1916	1974
JOHNSON	LUKE E	1900	1964
JOHNSON	WALTER	1887	1950
JOHNSON	RACHEL	1890	1953
JOHNSON	JOHN HENRY	1926	1957
JOHNSON	BETTIE	1953	
JONES	HUGHIE H	1902	1973



*Time marches on,
when you watch yourself growing up,
inside your children,
and their children and so on...*

By Brenda

JONES	GEORGIA	1901	1957
JONES	KATE W	1881	1945
JONES	ARTHUR	1897	1968
JONES JR	OSCAR	1924	1957
JOPLIN	RUSSELL	1894	1950
JUMPER		1904	1970
KEELING	LILLIE DICKERSON	1908	1958
LANDERS SR	FRANK	1902	1960
LANE	EUNICE TURNER	1921	1968
LANGHORN	NORWOOD S	1915	1943
LAW	MASTEN O	1921	1944
LEE	GEORGIE	1890	1949
LEFTWICH	F	1910	1956
LEFTWICH	ARTHUR W	1901	1973
LOVELACE	NOLA	1898	
MACKLIN	N	1868	1944
MARCH	LAURA	1888	1958
MARSHALL	THOMAS	1910	1970
MATTOX	GERTIE L	1895	1967
MAYS	BETTY	1956	1956
MEADOWS	ELIZABETH	1907	1973
MEDLEY	M NELLIE A	1901	1959
MEDOWS	HOWARD	1922	1957
MILLBERRY	THOMAS N	1875	1939
MILLNER	TOM	1870	1951
MOORE	ETHEL E	1888	1957
MORTON	JESSIE	1907	1960
MOTEN	LULA	1868	1974
NAPIER	RALPH NELSON	1926	1954
NICKERSON	BURLEY	1969	
NOEL	MARY E	1904	1972
PARKER	AMOS	1962	
PASCHEL JR	HERBERT V	1968	1973
PENN	EMMA B	1869	1971
PETTY	PERCEY T	1884	1948
PINNIX	MITTIE	1972	
PLENTY	WILLIAM H	1892	1968
POE	SAMUEL VIVIAN	1894	1968
POINDEXTER	TAW	1877	1951
POWELL	JOSEPHINE	1917	1958
REAMEY	LEWIS H	1865	1961
REAMY	LEWIS W	1865	1961
RIVENS	ROBERT	1925	1972
RO_ERTSON	ROSIE L		
ROBERTSON	H PATT	1908	1940
ROBERTSON	NORMAN S	1887	1946
ROBINSON	CHARLES	1904	1972
ROBINSON	CHARLIE JAMES	1915	1962
ROSE	LETHA BELLE	1890	1956

ROSS JR	RAYMOND	1930	1949
RUCKER	WALTE L	1899	1972
RUSSELL	ELOUISE	1920	1939
SALTER	BABY BOY	1962	1962
SALTERS	MATTIE B	1892	1966
SAUNDERS	FRED OLEAN	1930	1979
SAUNDERS	LYLBURN C	1916	1941
SCHLEY	DAISY E	1883	1956
SCHLEY	WILLIAM S	1883	1941
SCOTT	CHARLES	1911	1949
SESSION	CHRISS	1891	1970
SINGLETON	HAVANA E	1910	1960
SMITH	JERRY PRESTON	1910	1959
SMITH	WILLIAM A	1860	1960
SMITH	LUCY F	1898	1960
SMITH	DUDLEY S	1900	1958
SMITH	JOHN B	1913	1974
SMITH	MAGGIE H	1884	1970
SMITH	MITTIE A	1912	1970
SMITH	MITTIE A	1911	1970
SMITH	ANNA L	1868	1944
SNYDER	FLORENCE	1897	1947
SPEARS	CLARENCE C	1882	1959
STAMPS	J	1864	1957
STEVENS	JAMES	1876	1955
STONE JR	CHARLIE	1925	1964
STOVALL	RICHARD C	1927	1969
STOVALL	SHERMAN W(yse)	1885	1956
SUMMERALL	FRANK S	1963	1979
SUMMERS	HAYWOOD	1884	1943
TAYLOR	CLAYBORN	1893	1944
TAYLOR	JULIUS C	1907	1969
TERRY	FRANCES E	1940	1972
TERRY	MARGIE S	1913	1960
TERRY	JAMES H	1922	1963
THOMAS	WILLIAM	1910	1955
THOMPSON	RENA M	1920	1951
THOMPSON	NORA	1869	1952
THOMPSON	ROBERT M	1934	1969
THOMPSON	MARY	1914	1951
TINSLEY	MIN A		
TRENT	ANNA	1885	1949
TUCKER	MARGARET	1897	1957
TURNER	ROBERTA P	1894	1938
TURNER	RUTH M	1923	1940
TURNER	AUGUSTAS D	1893	1951
TYNER	RUFFIN A	1888	1965
TYNER	MARY E	1889	1973
unknown		1890	1955

The Recording Of A Cemetery

By Thelma Greene Reagan

Today we walked where others walked
On a lonely, windswept hill;
Today we talked where others cried
For Loved Ones whose lives are stilled.

Today our hearts were touched
By graves of tiny babies;
Snatched from the arms of loving kin,
In the heartbreak of the ages.

Today we saw where the grandparents lay
In the last sleep of their time;
Lying under the trees and clouds -
Their beds kissed by the sun and wind.

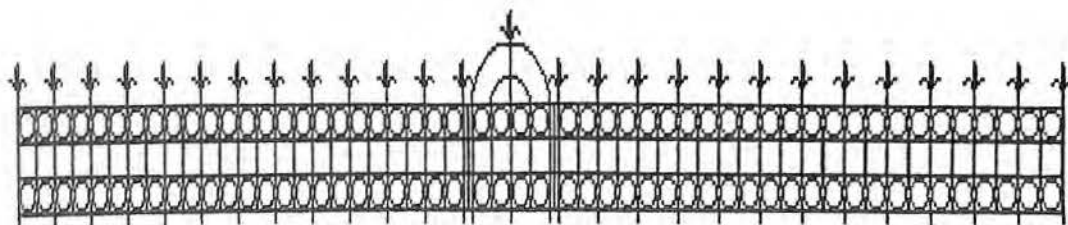
Today we wondered about an unmarked spot
Who lies beneath this hollowed ground?
Was it a babe, child, young or old?
No indication could be found.

Today we saw where Mom and Dad lay
We had been here once before
On a day we'd all like to forget,
But will remember forever more.

Today we recorded for kith and kin
The graves of ancestors past;
To be treasured for generations hence,
A record we hope will last.

Cherish it, my friend; preserve it, my friend.
For stones sometimes crumble to dust
And generations of folks yet to come
Will be grateful for your trust.

unknown			
unknown			
unknown	LEETEE O	1946	1948
unknown	ABIE	1907	1957
unknown		1918	1969
unknown	WILLIAM BLACK	1956	1956
unknown		1942	
unknown	JOHN H		
unknown		1969	
unknown	HESTER	1911	1970
unknown	ROVANNA		
unknown			
unknown			
WADE	DELORES ANN	1968	1969
WALKER	JAMES D	1878	1944
WALKER	MAGGIE A	1878	1952
WALLER	...LL		
WALLER	MARY ELLIS	1893	1956
WARD	LAWRENCE	1896	1956
WARREN	ELLIS M	1897	1957
WARREN	MUNGIE	1891	1963
WASHINGTON	SARAH E	1897	1964
WASHINGTON	B C	1889	1964
WATKINS	JOSHIA	1890	1967
WATSON	SAMUEL D	1922	1960
WATSON	ORIN J	1890	1956
WEBB	LOUISE	1905	1956
WEBSTER	PAULINE E	1919	1976
WHALES	ANNIE	1888	1949
WHITTEN	CORA	1896	1958
WHITTEN	GEORGE	1869	1947
WILLIAMS	VINNIE	1905	1962
WILLIAMS	C_RA G	1904	1969
WILLIAMS	FLOYD W	1892	1954
WILLIAMS	TOM	1880	
WITCHER	JOE C	1874	1949
WOODS	LEO	1897	1957
WOODS	BEN	1940	
WOODY	N	1896	
YANCEY	M R	1895	1957



MEMORIES HELD IN A VASE

Submitted by Elsie Elizabeth Franklin Spoelma

I'm sure most of you are familiar with carnival glass. It has become quite collectable over the years. It is called carnival glass because it was given as a prize at carnivals and amusement parks. This vase is filled with memories for me. My mother won it at a booth at Lakeside in the 1920's. It sat on a mantle in our house and was a constant reminder of how much fun a kid like me could have at Lakeside.

When I was very young, my parents took me to Lakeside on picnics and on the more gentle rides, such as the Ferris Wheel and the Merry-Go-Round or the hobby horses, as most children called them. The Amusement Park opened to the public in 1920 as a man-made lake for swimming. It had a sandy beach, complete with a boardwalk. It was 300 feet long and 125 feet wide. By 1923, many rides had been added, including the first roller coaster, officially called the Wildcat. In 1968, a new roller coaster called the Shooting Star was built. Both were most often locally called, "The Thriller." When I was older and went to Lakeside with school friends who always wanted to ride The Thriller, I could never let them know how I hated the roller coaster or how much it scared me. So, I closed my eyes, gritted my teeth and went screaming down with the others.

Lakeside closed October 19, 1986. My interest in the history of Lakeside led to searching for the details and I discovered that I am older than Lakeside, which was quite a shock until I decided it was o.k. My vase and I are still here, but Lakeside is gone.

Thank-you for letting me reminisce and share my memories. It is amazing how many memories one iridescent, orange colored glass vase can hold!



BEDFORD COUNTY, VIRGINIA

1800 TAX LIST

In the following entries, the first number after each name is that of the white males over age twenty-one, the second the number of horses owned, and the third, if given, the number of tithable slaves over age twelve.

[First District]

Matthew Tate, Commissioner

Alexander, Andrew 1-2	Anderson, David 1-1
Alexander, Thomas 1-1	Anthony, Mark 8-3-8
Armstrong, Thomas 1-1	Anderson, Robert 4-3-3
Adams, Jeremiah 1-2	Adams, Wm. 3-7-2
Austin, Thomas 2-4-2	Arthur Lewis 3-3-3
Ayers, James 4-7-3	Arthur, John 1-1
Austin, James 5-5-4	Arthur, Wm. Sr. 2-1
Allen, Wm. 3-3-2	Arthur, Jekinias 1-0
Asbury, James 1-3	Adams, John 3-4
Adkirson, Lewis 1-4-1	Adams, Thomas 3-1-2
Adkirson, Joshua 1-0	Adams, Wm. 1-1
Adkirson, Ellis 1-3	Arthur, James 1-0
Adkirson, Jeremiah 1-1	Agnew, Samuel 1-0
Adkirson, John 2-2	Abetant, Joshua 5-3-5
Austin, Robert 1-4	Abetant, Jesse 6-3-5
Austin, William 9-8-13	Ablephent, Samuel 1-2
Andrews, Thomas 4-4-2	Brown, Joseph 1-2
Adams, Ann 1-1	Baker, Joseph 2-3
Adams, Samuel 1-2	Brown, Daniel (miller) 1-1
Adams, Wm. 1-1	Bewly, Christopher 1-3
Adams, Henry 2-3-1	Brown, Jesse 1-1
Anthony, Christopher Sr. 2-3 1 2-wheel chair	Brown, Elizabeth 1-3
Negro Adam 1-0	Baker, Samuel Jr. 1-2
Anthony, Christopher Jr. 2-3	Baker, Samuel Sr. 2-2
Ayers, John, Jr., & Co. 1-3	Baker, Henry 1-1
Adams, Absalom 1-1	Baker, Absalom 1-1
Adams, Wm. 1-0	Brown, Daniel Sr. 5-4-5
Arthur, Wm. 1-3	Brown, Daniel Jr. 1-1
Adams, Joseph 1-3	Brown, Shadrick 2-1-2
Auld, Josiah, & Co. 4-3-1	Bond, Allen 1-2
Allen, Edward 1-1	Bandy, George 1-2 1 stud horse
Ashwell, John 2-2-1	Bagswell, Drewry 4-3-4
Arthur, Thomas Jr. 1-1	Branch, James 2-3-1
Arthur, Thomas Sr. 1-2	Branch, Susanah 1-1-1
Ayers, Samuel 1-2	Blankinship, Benjamin 1-2
Anthony, John A. 4-2-3	Blankinship, Elizabeth 1-0-1
	Bozwell, George 1-0

Brown, Henry, Estate 0-2
 Brown, Henry 5-4-5
 Burnes, James 1-1
 Brewer, Philip 2-2
 Baber, George 1-0
 Barton, Elisha 1-2
 Burson, Nathan 1-1
 Barton, Thomas 1-0
 Ballard, Stephen 1-1
 Browning, Caleb 1-6
 Brown, James 2-2-1
 Brown, George T. 1-1
 Best, Levi 2-3-1
 Burton, Robert 1-1
 Barker, Edwin 1-1
 Buford, Wm. 4-2-3
 Bobbitt, Randolph 1-3
 Brown, Wm. 1-2
 Brown, Ebenezer 1-2
 Becknor, David 1-1
 Barton, Burr 1-0
 Black, John 1-1
 Burton, Jacob 4-6-3
 Berditt, Gervis 1-0
 Boatwright, Wm. 2-1
 Brewer, John H. 2-1-1
 Beard, Margaret 0-2
 Ballard, Amos 1-1
 Baker, Daniel 1-4
 Brannon, Lawrence 1-2
 Bowls, Elisha 1-1
 Boram, Aron Jr. 1-3
 Boram, Aron Sr. 1-2
 ordinary license
 Banks, Samuel 3-8-1
 Banks, Dorcas 1-0-1
 Boyd, James 1-2
 Boyd, Wm. 1-1
 Black, Ben 1-1
 Baber, Wm. 1-2
 Buford, Henry 8-8-7
 Bramblit, Reubin 2-3-1
 Bobbitt, Wm. 2-2-1
 Blackwell, Moses 4-3-3
 Bewly, Nathan 2-3
 Board, Wm. Jr. 2-1-1
 Barber, Edward 1-1
 Brown, Sawny 1-1
 Bozwell, Barney 2-1-1
 Bozwell, Charles 1-2
 Basham, James 1-1
 Barker, Edward 1-0
 Board, John 11-10-11
 Board, Stephen 1-0
 Bramblit, Wm. 2-1-1
 1 stud horse
 Bratcher, Can 1-1
 Bratcher, John 1-2
 Bratcher, John Sr. 5-3-3
 Baker, Samuel 1-0
 Basham, Nathan 1-1
 Basham, Obediah 1-1
 Boothe, John 1-0
 Bennum, Jacob 1-0
 Byrd, Luke 1-4
 Burnett, Elisha Sr. 1-2
 Burnett, Joshua 1-1
 Burnett, Elisha 1-1
 Bennet, Richard 6-2-7
 Bond, Wright 2-3-1
 Bryant, William 1-1
 Board, William Sr. 5-2-5
 Bowls, John 2-1
 Bott, Frederick 2-1-1
 Black, Chrisley 1-1
 Burton, William 2-3-1
 Board, James 4-4-1
 Board, Absalom 1-2
 Bently, Banner 1-2
 Black, Samuel 1-1
 Black, John 1-1
 Black, Daniel 1-1
 Burnett, Wmson. 3-2-3
 Best, John 1-0
 Bowyer, John 1-1
 Burditt, Richard 1-0
 Burnitt, Samuel 1-2
 Burnitt, John 1-0
 Barber, Elisha 1-0
 Butler, Wm., Estate 4-6-4
 Ballard, McCajah 2-3
 Black, John (G C) 1-3
 Cumpton, Maridith 1-0
 Cundiff, Isaac 4-2-3
 Creary, William 1-3
 Coffey, John 1-3
 Casey, James 4-3-1
 Casey, William 1-1
 Carter, John 3-5-3
 Carter, Mary 6-6-5

BEDFORD COUNTY 1800 TAX LIST

Creasy, John	2-4	Cundiff, Elisha	1-1
Creasy, Thomas Jr.	1-2	Cadwallader, John	1-1
Creasy, Byrd	1-0	Claytor, John	7-6-6
Creasy, Charles	1-2	Cazey, Jeremiah	1-1
Creasy, William	1-0	Crumb, Abram	1-1
Cadwallader, Thomas	1-2	Cordin, Edward	1-0
Cadwallader, Moses	1-1	Carter, John	1-1
Cadwallader, Jesse	1-2	Dowell, Nehemiah	2-1
Cundiff, Benjamin	2-4	Duval, Skinner	1-2
Corley, Carrell	2-6-1	Dobbins, Griffin	4-5
Corley, William	1-2	Dickson, George	3-10-4
Carney, John	2-2	Dallice, John	1-1
Carney, William	2-2	Davis, Robert	1-0
Coty, Jacob	1-5	Dabney, Cornelius	2-3
City [Coty?], Christian	1-2	Dollard, William	1-1
Craig, Robert	1-4	Davis, Thomas	1-1
Crumpacker, John	4-8-1	Dent, John	2-6
Crumpacker, Joel	2-2-1	Dent, William	1-1
Crumpacker, Abram	2-4-1	Dawson, Jacob	3-5-1
Cowan, Robert	11-7-12	Dawson, George	2-5-1
4-wheel carriage		Dearin, Jemima	2-2-2
Craig, Adam	1-2	Dickinson, Joseph	5-5-4
Chaffen, Joseph	5-5-1	Davis, James	1-1
Coatz, Samuel	1-1	Dowell, Francis	1-1
Cundiff, George	4-5	Dabney, William	1-1
Crouch, William	2-1	Debo, Michael	2-1
Crouch, Polly	1-1	Dowdy, John Sr.	1-3
Crouch, Joseph	1-2	Dowdy, John Jr.	1-2
Casey, Alexander	2-2-1	Dowdy, Elijah	1-0
Cundiff, John	2-2	Dabney, Charles	1-1
Candler, Zadikiah	2-2-1	Dabney, George	1-2
Campbell, Thomas	6-4-5	Donoho, Edward	1-1
Canady, George	1-1	Dillard, George	1-0
Claytor, Samuel	8-9-4	Davis, Henry	1-1-1
Corley, Thial	1-0	Deake, Aldin [?]	1-1
Colbert, Francis	1-1	Dowell, Micajah	1-2
Cooper, William	2-5	Dearion [?], Lewis	2-2
Cundiff, James	1-1	Durham, William	1-2
Cundiff, Richard	5-1-5	Dickinson, William	1-2
Cundiff, Lewis	1-1	Durritt, Richard	4-3-5
Chapman, Nathan	1-2	Dobbins, Battin	5-6-4
Coleman, James	1-2	Durritt, William	1-1
Carter, David	1-2	Dody, James	1-0
Clark, William	1-0	Dowdy, Hunley	1-3
Crinshaw, David	9-9-11	Dowdy, William	1-2
Crain, John	1-1	Dowell, Elijah	2-2-1
Callaway, Achillis	1-8-1	Dickinson, Agness	1-1
Canady, George Jr.	1-0	Dobbins, Samuel	1-3
Cundiff, Elijah	2-3	Dobbins, Griffin Jr.	1-0
Cundiff, Isham	1-1	Daniel, James	1-2

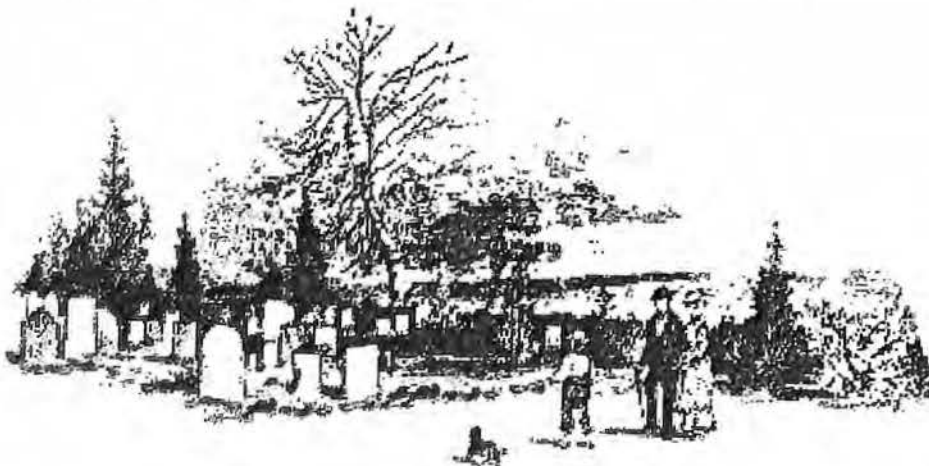
Dickson, Thomas	1-1	Feazle, Jacob	3-1
Dimmy, John	2-1	Fealds, John	3-4-1
Dowdy, Claybon	1-0	Frith, Joseph	1-0
Dickson, John	1-1	Franklin, John	2-4
Dickson, John Jr.	1-0	Frith, Harbert	1-0
Drewry, Joseph	2-1	Frith, Thomas	3-5
Dallace, M Duke	1-0	Finny, John	1-0
Doss, Azariah	2-1	Forgesson, Jeremiah	1-2
Doss, Joel	3-3	Fruit, Jacob	1-2
Dickson, William	3-2-1	Fulkins, John	1-2
Donn, Joseph	1-2	Fuqua, Thomas	7-6-6
Dowdy, Ezekiel	1-0	Fuqua, Caleb	1-1
Dallace, Robert	1-1	Fuqua, Moses	1-1
Dickinson, William Jr.	1-2	Failing, Henry	1-5
Early, Jacobus	7-6-6	Finny, Peter	1-1
Eagar, James	3-5-1	Gross, Isaac	2-5-1
Eagar, John	1-2	Gibbs, William	1-1
Ellis, Uriah	1-1	Grubbs, Jesse	3-3
Erwin, James	1-3	Garrett, Silas	2-3-1
Erwin, Samuel	1-2	Gilpin, Francis	3-3
Ellis, William	3-4	Gilpin, William	1-1
Early, Joshua	4-4-4	Goggins, Pleasant	1-1
Early, Joel	2-1-1	Greenwood, Samuel	1-2
Eads, Joseph	1-3	Goore, John	3-1-2
Eads, Edward	2-2	Gibson, John	1-2
Eckhols, James	3-1-2	Greer, Asa	1-1
English, George L.	2-3-1	Gill, Charles	4-5-3
English, William	1-1	Green, Edward	1-1
English, Charles	2-1-1	Garrett, John	4-4-2
English, Dinah	4-0-4	Graham, Michael	8-11-6
Ellis, Ben	1-1	Good, Edmund	1-0-1
Ellis, Spencer	1-1	Gowen, Daniel	2-1
Freeman, James	4-4-1	Gowen, Manoah	1-0
Fouldin, John	1-4	Griffin, Samuel	2-5-2
Franklin, Edmund	3-1-2	Gross, John	1-1
Flournoy, James	1-4-1	Gillespey, Charles	1-1
Ferrell, Gabriel	3-1-2	Goode, William	1-0
Fuqua, Aron	1-1-1	Goode, Robert Jr.	1-0
Fiddler, Samuel	1-3	Goode, Robert Sr.	1-2
Frith, Joseph	1-1	Goode, Thomas	1-1
Fisher, Daniel	1-2	Goare, Standly	1-2
France, Jacob	1-2	Hole, Charles	1-2
Foster, John	2-2	Hole, Nathan	1-1
Fields, Daniel	1-0	Hole, Jacob	1-3
Franklin, John	1-2	Hole, Jonah	1-0
Fields, Samuel	1-1	Herford, Benjamin	1-0
Filer, Frederick	2-3	Herford, Thomas	1-0
Feazle, Philip	3-4	Hague, Samuel	1-2
Feazle, William	1-1	Helm, John D.	1-1
Feazle, Barnard	3-7	Hoofman, George	2-2

BEDFORD COUNTY 1800 TAX LIST

Harris, Samuel	3-2	Huddleston, Abram	1-2
Hughs, Benjamin	1-2	Howell, Thomas	1-2
Hix, Philip	2-2	Hopkins, William	6-8-6
Harwood, Francis G.	5-3-4	Hewit, Isaac	1-0
Hopson, Richard	8-5-9	Hampton, John	9-8-6
Huckaby, Thomas	1-2	Hardy, Samuel	1-3
Hancock, John	2-1-1	Hix, Farthing	1-2
Haiden, William	1-0	Hix, Jeremiah	1-3
Haiden, John	3-2-1	Hale, Stephen Sr.	5-3-2
Hogan, Enoch	2-4	Hale, Thomas	1-1
Hogan, Obidiah	1-2	Hale, William	1-2
Haynes, Hamton	1-3	Hale, Stephen Jr.	1-1
Hopkins, John	2-2-2	Hale, Labourn	1-0
Huddleston, Henry	1-1	Hale, Richard	1-0
Huddleston, Joseph	1-1	Hatcher, Farley	3-3-1
Hopkins, Francis	8-5-7	Hall, Elisha	4-3-2
Hilton, Jeremiah	1-3	Hall, Matthew	2-3-1
Hancock, John	1-2	Hall, Jesse	1-1
Hancock, William	1-1	Hackworth, George	1-4
Hardy, Solomon	4-5-2	Haiden, William	1-2
Hughs, David	2-4	Haiden, Joseph	1-1
Haynes, Henry Sr.	6-7-8	Hudnell, John	1-2-2
Haynes, Henry Jr.	1-1	Hudnell, William Jr.	1-1
Holland, Druery	0-5	Hudnell, Thomas	2-1-1
1 stud horse		Hudnell, Richard	1-1
Holland, Stephen	1-4	Hancock, Samuel	8-6-7
Hudnell, William Sr.	3-4-2	Humphris, John	1-1
Hollady, John	1-2	Harry, Negro	1-3
Hollady, David	1-2	Hurt, James	1-3
Hollady, Lewis	1-1	Hurt, Moses	3-3-2
Harriss, James	3-3-2	Hurt, Mary	2-2-1
Hall, Hezekiah	3-5	Hix, William	1-2
Holt, Lucy	4-6-4	Hughes, Rice	2-1-1
Holt, Mary	3-1-2	Hatcher, Benjamin	11-7-8
Hill, Robert	1-3	Hudson, Robert	2-5
Huckaby, John	1-1	Hudson, Alexander	1-2
Hurt, Elijah	1-1	Hudson, John	1-2
Homan, Ralph	2-2	Hudson, James	1-1
Holt, Thomas	5-3-4	Hudson, Simon	1-1
Hurt, Henry	1-2	Hatcher, William	1-1
Henderson, Benjamin	1-1	Hatcher, Richard	3-2-2
Haiden, Charles	1-3	Hatcher, Hezekiah	1-0
Hurt, Elisha	3-5-2	Hunt, Jacob	1-0
Hore, Edward	1-1	Hackworth, William	1-1
Harper, Robert	2-3-1	Hackworth, Benjamin	1-0
Holt, Joseph	2-5-1	Hackworth, Joseph	1-2
Hunt, Stephen Sr.	3-5	Hambleton, James	1-0
Hunt, John	1-1	Howell, David Jr.	1-0
Hunt, Thomas	1-1	Howell, David Sr.	1-2
Horsley, William	1-1	Hunley, Nehemiah	1-0

Howell, John 1-1
 Harris, Levi 1-1
 Hackworth, Thomas 1-1
 Hackworth, William 1-0
 Hackworth, John 1-2
 Hollagan, John 1-1
 Hail, John 1-0
 Hanks, Fleetwood 1-1
 Hancock, Edward 3-4-2
 James, John 2-2
 Jones, Owen 3-1-5
 James, Isaac 1-3
 Jordan, Absalom 2-1
 1 stud horse
 Johnson, James 2-4
 Johnson, Joseph 1-1
 Johnson, James Jr. 1-1
 Jones, Martin 1-3
 Jinkins, Abram [?] 1-1
 Jinkins, Jeremiah 2-6
 Jinkins, David 1-0
 Johnson, Thomas 1-2
 Jinkins, Isaac 1-5
 Ivine, Robert 1-1
 Jordan, Winston 2-4-1
 Jordan, William 5-6-3
 James, Daniel 2-4
 James, Samuel 1-1
 James, Lawrence 1-1
 James, Adam 1-1
 Johnson, Christopher 2-1-1
 Jordan, Woodson 1-1
 Jordan, William 1-1
 Jarred, John 1-2
 Jarred, Thomas 1-0
 Jarred, Joseph 1-3
 Johns, Charles (Blackman)
 1-1
 Negro Jack 1-2
 James, William 1-4
 Jordan, Jonas 2-2
 Jordan, Benjamin 2-2
 Johnson, John 5-6-4
 Jinkins, Jacob 1-2
 Johnson, Zachariah 1-1
 Jones, John 1-1-1
 Jones, Jesse 1-0
 1 stud horse
 Jones, John 1-0
 Jennings, Samuel K. 3-2-1
 Kennett, John Jr. 1-0
 Kennett, Zachariah 1-1
 King, Aviry 1-4
 King, Abram 1-1
 King, William 1-2
 Kiplinger, John 1-1
 Keanon, James 1-3
 Kent, John 2-2
 Kesson, David 0-2
 Kennett, Peter 1-1
 Kennett, Joseph 1-2
 Kennett, John Sr. 2-2
 Krantz, Michael 2-2
 Krantz, Thomas 1-1
 Krantz, Jacob 1-1
 Loyd, Henry 1-2
 Lamb, Jacob 1-1
 Lamb, Archibald 1-3
 Lazenby, Robert 2-7
 Leftwich, William 5-7-7
 Lancaster, Robert 1-2
 Lee, William 8-6-6
 Lee, Alexander 2-2-1
 Lee, Beverly 2-0
 Lewis, Jesse 1-1
 Lewis, George 1-2
 Lewis, Joel 1-2
 Lewis, Evan 1-2
 Lewis, James 1-2
 Lyles, Manassah 3-4-1
 1 stud horse
 Leftwich, William, son of
 Thomas 2-3-2
 Lefoy, John 1-0
 Leftwich, Augustine Jr. 1-2
 Leftwich, Uriah Jr. 1-1
 Lynch, Patrick 1-3
 Leftwich, Augustine Sr.
 6-6-5
 Leftwich, Jesse 5-3-4
 Leftwich, Littleberry
 5-6-4
 Leftwich, Jabez 6-5-5
 Lazenby, Joshua 1-1
 Leftwich, James 1-1
 Leftwich, James (RH) 1-1

Leftwich, Nichodemus 1-1	Mitchell, Ignatious 1-2
Leftwich, John 1-0	Mitchell, William 5-4-3
Lyon, Elijah 1-1	Minor, Armsted 1-1
Leftwich, Joel 7-6-7	Meador, John 2-2-1
2 stud horses	Meador, James 3-2-3
Lumpkin, Thomas 7-11-5	Meador, Reubin 1-0
Lawhon, Isham 1-1	McCormack, Micajah Sr. 1-2
Landsdown, William 1-1	McCormack, Richard 1-1
Lawman, John 3-2-2	McCormack, Micajah Jr. 1-0
Leftwich, Uriah 2-2	Marckle, Charles 4-3-2
Leftwich, William 1-1	Mayes, Samuel 1-2
Mitchell, Robert (son of	Moorman, James 1-1
Enos) 1-1	Moorman, Jacob 1-0
McCormack, Anderson 1-2	Mayes, Elijah 1-1
Meador, Thomas 1-2	Martin, Charles C. 1-1
Mitchell, Enos 2-4	Martin, Thomas 1-0
Mitchell, Joseph 1-1	McCormick, Jesse 1-1
Meador, Benjamin 2-3	Mitcham, Ben 4-4
Martin, David 1-0	Moss, Edward 1-1
Minor, Three 4-3-3	Mitchell, Samuel 4-7-4
McCormack, John 1-2	McCoy, William 1-3
Moorlin, Stephen 3-4	Morgan, Evan 1-1
Moorman, Charles 5-4-5	Mayes, John Jr. 1-1
Melton, Anderson 1-1	Mahew, Reason 1-1
Minor, William 5-2-5	Mahew, Moses 1-2
Minor, Gabriel 3-2-3	Mahew, Alexander 1-2
McGlothlin, John Sr. 1-1	Mahew, James 1-0
McGlothlin, William 1-1	Murphy, John 3-4-2
McGlothlin, John Jr. 1-1	Morgon, Mordicai 1-3-3
Maheu, John L. W. 6-8-3	Medley, George 1-1-1
1 stud horse	Melton, Absalom 0-2
Mitchell, John Sr. 3-3-2	Moorlin, Jason Sr. 2-5
Mitchell, John Jr. 1-3	Moorlin, Joseph 1-2
Mitchell, Equiller 1-2	Moorlin, Jason Jr. 1-1
Mitchell, Elisha 1-0	Martin, William 2-2
Mead, William 1-5	Morris, Jacob Jr. 1-0
McCabe, John 1-1	Morgan, Reice 2-4
Martin, Stephen 1-4	Mitchell, Daniel 3-5



BEDFORD COUNTY 1800 TAX LIST

Moorman, William 2-2-1	Mitchell, Stephen 1-3
Mitchell, James 0-5	Meade, Robert 4-1-2
McGeorge, Lawrence 2-2-2	Newman, Henry 1-1
Meador, Ira 2-4-1	Nichols, Philipot 1-1
Meador, John 4-6-4	Nichols, Archa 2-2
Meador, Jeremiah 1-1	Nimmo, Robert Sr. 2-4
Meador, William 1-2	Nimmo, William 1-0
Meador, Richard 2-1-1	Nimmo, Robert Jr. 1-2
Moorman, Charles 1-1	Nimmo, David 1-1
Meador, Jason 1-2	Newman, Garritt 1-0
Meador, William 1-3	Newman, Garritt 1-1
Martin, John 1-1-1	Nichols, John Sr. 7-4
Martin, Sarah 1-1-1	Nicholz, Archibald 1-2
Majar, Roland 1-2	Nicholz, Elisha 1-1
McCan, Daniel 1-0	Nichols, Jesse 1-2
Morgan, Lewis 1-1	Nicholz, John 2-1-2
Morgan, Samuel 1-1	Nichols, Bazdale 1-1
Moody, George 1-1	Nance, Paschal 1-0-1
Major, Samuel 1-1	Nichols, William 1-2
Merrit, Samuel 1-1	Nelms, Charles 7-6-6
McCarty, James 1-2	Nelms, Presley 5-5-5
McConckey, John 2-3	Nichols, Bazdale 3-4-2
Meador, Obediah 1-2	Nichols, Gilbert 1-0
Melson, Charles 1-1	Nichols, Thomas 1-1
Martin, Samuel 1-1	Nichols, George 4-5-1
Moody, John 3-2-1	Newlon, John 1-2
Musgrove, Henry 2-2-1	Newman, Nimrod 2-3
Musgrove, Henry Jr. 1-2	Olinger, Philip 2-2
Meador, Lee 2-1-1	Owens, John 2-3
Musgrove, Ben 1-5	Owens, Samuel 1-2
Morris, Israel 1-2	Owens, Owen 1-1
Morris, Ben 1-3	Overstreet, John 1-0
Murdock, Joseph 1-0	Overstreet, Thomas 1-1
Murdock, William 1-1	Overstreet, Thomas Sr. 2-4
McPherson, Stephen 1-1	Overstreet, James 1-1
McPherson, John 2-4	Obriant, Matthew 1-3
McPherson, Daniel 1-2	Otey, Frazer 6-6-7
McPherson, John Jr. 1-1	Otey, John 7-2-9
McKey, Alexander 1-1	Otey, James 1-1 ordinary license
Mayse, Bingham 1-0	Otey, Walter 2-1-1
Morris, John 1-0	Otey, Armsteed 1-1
Mayo, Thomas 1-3	Otey, Isaac 5-5-6
Mullins, John 1-2	Overstreet, John 2-1-1
Millison, Henry 1-2-1	Overfelt, Matthew 3-4
Morgan, Morgan 2-3-1	Pegram, Daniel 9-4-11 2-wheel chair
Morgan, Abram 1-2	Payne, James 1-2
Miller, Jacob 1-1	Payne, Joseph 1-2
Morgon, Lewis 1-0	Phelps, John Jr. 1-3
Mozzley, Walter 5-2-4	
Mitchell, Robert 2-3	

Patterson, Joseph 3-3-1
 Payne, William 2-3-1
 Payne, Thomas 3-4-2
 Pennock, John 1-1
 Pullen, Archa 1-1
 Prease, Thomas 1-7
 Prease, Joseph 1-5
 Phelps, Richard 1-2
 Phelps, Thomas 1-2
 Pullen, Thomas 3-3-3
 1 stud horse
 Parker, James 1-3
 Pratt, Stephen 1-1
 Preston, Stephen 4-3-4
 Phelps, John Sr. 10-12-10
 Parcley, Richard 1-0
 Payne, John 1-1
 Pate, Thomas 3-5-2
 Pearson, Thomas 2-3
 Prather, Jonathan 1-0
 Pollard, John 2-4-1
 Pollard, Thomas 1-3
 Preston, Thomas 2-2-1
 Parsons, Samuel 2-3-1
 Pryor, Harris 2-2
 Pennock, William 2-1
 Phelps, Randolph 1-2
 Payne, Thomas Jr. 1-1
 Perrin, John 1-1
 Pines, George 1-1
 Preston, Nathan 1-1
 Preston, Moses 1-1
 Perrin, John 1-0
 Pryor, William 1-1
 Pigeon, William Sr. 1-2
 Pigeon, William Jr. 1-2
 Paxton, Benjamin 1-2
 Pearsy, John 7-7
 Pearsy, James 1-3
 Payne, John, Estate 1-2-1
 Parker, David 1-3
 Pate, Matthew 7-8-6
 Quarles, Samuel 4-1-3
 Quarles, James 6-3-6
 Quarles, John 3-2-3
 Richards, John 1-1
 Richards, Richard 1-0
 Richards, William 1-0
 Roze, Thomas 2-2
 Rhodes, Joseph 1-3
 Ross, John 1-2
 Rhodes, Robert 2-1-1
 Rives, Jordan 1-0
 Robertson, Jeffrey 2-2
 Richardson, Barnard 1-0
 Richarson, Green 0-1
 Richardson, John 1-0
 Richardson, Samuel 1-1
 Roberts, Daniel 2-2-1
 Robertson, John Jr. 1-1
 Roberts, John Sr. 3-3-2
 Ragland, Jacob 2-3
 Ragland, Reubin 1-1
 Reid, Daniel Sr. 1-1
 Reid, Daniel Jr. 1-0
 Reid, Benjamin 1-1
 Reid, Francis 5-4-4
 Richards, Ben 2-1
 Richardson, William 1-2
 Robertson, James 1-0
 Robertson, Thomas Sr. 0-1
 Robertson, Thomas Jr. 1-1
 Richardson, Thomas 1-2
 Rider, John 1-3
 Richardson, Joshua 1-1
 Rightmoirs, Michael 1-2
 Reid, William, Estate
 10-8-12
 Roof, Joseph 1-1
 Reice, John 2-3
 Roberts, Richard 2-5-2
 Richards, Abijah 1-1
 Randolph, James (black man)
 1-2
 Ridgway, Joseph 1-2
 Raynor, George 1-1
 Robbins, George 1-1
 Rice, Benjamin 5-4-5
 2-wheel chair
 Richardson, John 1-0
 Stockton, Dan 2-3
 Simmons, Charles 1-1
 Sinclair, John 1-0
 Sinclair, George 1-2
 Sinclair, David 1-1
 Shruver, Wm. 2-4-1
 Simmons, Reuben 1-2
 Simmons, Alexander 1-2
 Stith, Thomas 6-6-5
 Squires, George 2-1

BEDFORD COUNTY 1800 TAX LIST

Snyder, Henry	1-3	Sinclair, Isaac	2-6
Snyder, Malon	1-1	Swain, George	1-2
Sinclair, Wayman	1-3	Schooly, Elisha	3-3
Saunders, Julius	2-3	Squires, Uriah	4-4-3
Stratton, William	3-2-2	Stone, Micajah, Est.	2-3
Sinclair, Wayman	1-2	Stone, John	1-1
Sinclair, John	1-0	Scott, George	4-6-4
Shrewsbury, William	3-3-2	Smith, Alexander	3-2
Stump, Thomas	1-0	Smith, Isaac	1-0
Shrewsbury, Nathaniel	1-1	Stratton, Henry, Est.	4-3-4
Sinclair, Robert	2-3	Saunders, David	14-12-17
Synor, Ben	1-1	Sinclair, Edward	1-1
Synor, John	2-2	Shepherd, Jacob	3-3
Simmons, Elizabeth	1-4	Sears, John	1-3
Simmons, William	1-1	Suttle, William	2-1-1
Stone, Sabe	1-2	Suttle, Lewis	1-1
Smith, George	1-0	Smelser, Jesse	1-2
Stephens, William	1-0	Scruggs, Gross	8-5-9
Shrewsbury, Reuel	1-2	Swinny, John	1-2
Stratton, Archibald	2-2-2	Sutphin, Hendrick	1-1
Sturman, Valentine	2-1	Shehon, Richard	1-3
Simonis, John Sr.	1-1	Smith, Samuel	11-8-12
Simonis, William	1-1	Sutphen, Solomon B.	1-4
Simonis, John Jr.	1-0	Steagall, Drinkard	1-0
Simonis, Isaac	1-1	Saunders, Jeremiah	1-0
Smelsor, Abram	1-3	Sampson, Jack (black man)	2-1
Sutphin, William	3-4-2	Toney, Harris	2-3-1
Sturman, William	3-3-1	Taylor, Edward	1-1
Shrewsbury, Ruel	1-2	Tucker, Thomas	1-0
Smith, Thomas	2-3-2	Turner, Admire Junr.	1-1
Stone, Admire	1-2	Turner, James	1-1
Smelsor, John	1-5	Thurman, Henry	1-0
Shrieve, Joshua	1-1	Turner, John	1-3
Swain, Charles	1-2	Thomason, Thomas	1-1
Swain, Jeremiah	1-0	Thomason, John Senr.	2-2
Stone, Moses	1-2	Thomason, William	1-0
Stilt, Joseph	3-5-5	Terry, William	6-11-4
Squires, Levi	3-5-2	1 stud horse	
Stith, Benjamin	3-5-3	Tate, Obadiah	4-6-4
Squires, Thomas	1-0	Turner, Elijah Senr.	4-3-3
Spradlen, Abner	1-1	Turner, Elijah Junr.	1-1
Stuart, Littleberry	1-0	Turner, Wilson	1-0
Stuart, Vashty	0-0-1	Trent, Obadiah H.	3-1-1
Stratton, Thomas	1-2-3	Trent, William	1-1
Slack, John	1-1	Trigg, John	11-8-11
Slack, Matthias	1-2	2-wheel chair	
Slack, Adam	1-3	Turner, Richard	1-2
Sinclair, Alexander	1-1	Tullace, Richard	1-2
Stratton, John	2-3-1		
Scott, Drewry	1-2		

Negro Tom 1-1
 Thresher, John 1-1
 Toler, Christopher 1-0
 Toler, Joseph 2-0-3
 Thomas, George 1-0
 Thorp, Solomon 1-3
 Toler, Robert 1-0
 Thornhill, James 1-0
 Turner, Lewis 1-3
 Turner, John 1-3
 Thomas, John Senr. 2-5
 Thomas, Joshua 1-3
 Thomas, John Junr. 1-1
 Thornhill, William 1-2
 Terrill, Edward Senr. 1-4
 Terrill, Edward Junr. 1-1
 Turner, Admire Senr. 6-8-5
 Updych, Amon 1-3
 Updych, Samuel 1-1
 Vealy, Simon 2-3
 Vest, John 2-2
 Vaughn, William 2-2
 Vaughn, Benjamin 1-1
 Witt, Robert 1-2
 Wieks, Alderson 3-13-3
 Wilson, Joseph Senr. 1-2
 Wilson, Joseph Junr. 1-1
 Whittaker, Samuel 1-1
 Woody, William 2-1-1
 Wilson, Asa 1-0
 Wright, John (Otter) 6-7-4
 Wright, William 2-3-1
 Welch, George 1-2
 Waggoner, Dennis 1-2
 Williamson, John 1-2
 Walker, William J. 6-5-6
 Walker, Robert M. 5-3-4
 Watts, Ben 2-4-1
 Wright, Thomas (Otter) 1-2
 Wilks, Samuel 1-6
 Wright, Matthew 1-2
 Witt, John 3-6-2
 Whitton, William 1-2
 Watson, Jesse 4-6-2
 Wade, Jacob 2-3
 Wilson, William 1-1
 Wright, Anthony 0-4-2
 Wright, Tomney 1-4
 Walker, Thomas 1-1
 Wright, John 3-7-4
 Wheeler, Anderson 1-1
 Wheeler, Thomas 2-5
 Watts, William 1-2
 Wright, Joseph 7-6-6
 Wright, John 1-3
 Wade, Joshua, Estate 0-2
 Wood, Jesse 1-1
 Wade, Jeremiah 1-2
 Williams, Roger 9-4-6
 White, Joseph 2-4
 Wigginton, George 1-1
 Wigginton, John 1-3
 Witt, Mills 1-1
 Wade, Isaac 10-10-6
 Wood, Aron 1-4
 Wooderd, Richard 1-1
 Wince, George 1-1
 Williams, James 1-1
 Williams, Thomas 2-2
 Williamson, Henry 2-3
 West, Joseph 1-1
 Wooster, Moses 1-1
 Williamzon, Milburn 1-1
 Whirly, David 1-1
 Wright, Joseph (2) 3-7
 Witt, Jesse 0-2
 Walden, John 5-10-4
 Willace, George 2-4-1
 Woodford, Thomas 3-6
 Whisly, Frail 1-1
 Warner, Jacob 1-3
 Woodcock, Robert 1-1
 Wright, Griefeffey 1-1
 Watson, Jesse Junr. 1-1
 Wheat, Zadock 1-2
 Wilson, John 1-1
 Wooster, Herman, Est. 5-7-7
 West, George 1-3
 West, John 1-2
 Welch, Thomas 1-1
 White, Jacob 1-1
 Wood, Francis 1-0
 Williamson, Ben 1-1
 West, Thomas 1-1
 West, Obadiah 1-3
 Wommox, Jesse 1-1
 Waggoner, Peter 1-1
 Young, Dunkin 1-1
 Yates, John 2-1
 Young, John 1-2
 Yates, John 1-1

BEDFORD COUNTY 1800 TAX LIST

Yates, William 1-0

Yates, William (son of Wm.)
1-1Northern District
John Leftwich, Commissioner

In the following entries, the first number after each name is that of the white males over age twenty-one, the second the number of horses owned, and the third and fourth, if given, the number of tithable slaves aged over sixteen and the total number aged over twelve.

Anthony, Banks 1-4-4-5	Bright, Charles Jnr. 1-2-4-6
Anderson, Jacob 1-7-12-15	Bennett, William K. 1-1
Austin, Richard 1-0	Bunch, James 2-5-3-3
Anspaugh, Peter 1-1	Boothe, William 2-1-1-1
Anthony, Sally 0-2-4-5	Burton, William 3-4-7-10
Anderson, Nelson 1-4-12-14	Bullock, Hannah 0-3-6-8
Anderson, Jesse 1-3-12-13	Blankenship, Joseph 1-5
Asberry, Thomas 1-2	Blankenship, Benjamin 1-2
Asberry, James 1-0	Bullock, John 1-0
Asburry, Thomas J. 1-0	Ballard, Barkley 2-3
Banister, Issac Jr. 1-1	Bateman, John 2-2
Baughan, John 1-3	Bateman, Benjamin 1-1
Banister, Isaac 1-4	Bouyer, Jacob 1-2
Bundurant, John 3-3	Beard, Samuel 2-7-2-2
Burrass, Edmond Snr. 3-3	Bowcock, Elijah 2-5
Bundurant, Thomas 1-1	Blackwell, Micajah 1-4-2-3
Brydie Brown &c 0-1-1-2	Bramblett, James 1-1
Bradfute, Robert 2-5-6-7	Bryant, Elijah 0-3
Burton, Robert 1-7-6-8	Bruice, William 1-1
Bundurant, LittleBerry 1-0	Booker, John 1-5-1-1
Brown, John 1-1	Bruice, David 1-1
Brown, Thomas 2-4	Bruice, Mordecai 1-2
Bouyles, Robert 3-2	Bruice, Ambrus 1-1
Bouyles, John 1-1	Bellomy, Samuel 1-2-2-2
Bouyles, Thomas 1-0	Bellomy, Benjamin 1-1
Bouyer, Adam 2-0	Bayman, Nathaniel 1-1
Bouyer, Adam 1-2	Butlar, Nathaniel 1-1
Boblitz, Jacob 1-3	Brackenridge, James 1-0
Boblitz, Michael 2-3	Bradley, Jesse 1-1
Boblitz, John 1-0	Blake, Nathaniel 1-0
Brown, James 1-1	Boggs, Robert 0-1
Bates, William 1-1	Buckner, Henry 1-2
Bundurant, Thomas Jn. 1-0	Bradley, William 1-1
Bright, Joshua 1-1	Cobbs, John L. 1-3-3-4
Bright, Charles Senr. 1-2-5-7	Campbell, Moses 1-3
Bright, Joseph 1-1	Chastaine, John 1-2

Chaffin, Joseph 1-2
 Coffey, Jacob 1-0
 Curl, Julius 2-3-4-6
 Crews, Jesse 1-2-1-1
 Cavanaugh, William 1-1
 Cobbs, Samuel 1-4-3-3
 Cozen, William 1-0
 Craig, William 1-2
 Campbell, John 1-0
 Caffery, Charles 1-6-6-6
 Campbell, William 1-4-4-5
 Clark, Isham 2-6-2-3
 Coward, Reubin 1-7-4-4
 Clayton, Lewis 1-3-3-3
 Childress, Royal 1-2
 Chastaine, William 1-1
 Crump, George 1-2
 Crump, Susannah 0-2-3-4
 Crump, Fendall 1-1
 Crump, Walker 1-1
 Cabell, Doctor George
 0-4-4-7
 Clayton, Jaspas 1-0
 Craine, John 1-4
 Craine, James 1-1
 Cobbs, Robert 0-4-5-5
 Cobbs, Jeffery 1-1
 Cobbs, Waddy 1-5-5-5
 Coffey, Josias 2-7-1-4
 Cox, Abraham 1-2
 Clay, Charles 1-9-12-14
 Campbell, Anthony 1-2
 Clayton, Pettis 1-2
 Clayton, William [no
 entries]
 Callaway, William
 2-12-13-20
 Clark, Joseph 1-3
 Clark, Bowling 1-5-4-4
 Crews, Edward 1-1
 Clark, Christopher
 1-11-10-11
 Dooley, John Senr. 2-3
 Dooley, John (son of Ab)
 1-1
 Dooley, Henry 1-2
 Dooley, John Jnr. 1-1
 Dooley, George 1-1-0-1
 Cashman, Martin 1-2
 Campbell, James 1-2
 Cobbs, Sarah 0-3-5-5
 Clark, Jesse 1-4-1-2
 Chastaine, John Se. [?]
 1-3-8-8
 Clayton, John W. 1-0
 Coffey, Joseph 1-0
 Crump, Thomas 1-2-1-1
 Chastaine, Stephen 1-1
 Crump, Charles 1-1-1-1
 Cobbs, Reubin, Est.
 0-2-4-5
 Campbell, Aron 1-1
 Cox, Isaac 1-1
 Callaway, Colo. James
 6-5-11-13 4-wheel
 coach 2-wheel chair
 Campbell, Henry 1-1
 Conway, James 1-2
 Conway, John 1-0
 Dooley, Aron 1-4
 Dickens, Barnet 1-0
 Davies, Henry L. 1-11-25-34
 Douglass, George 2-5-4-4
 Douglass, David 1-0
 Deardoff, Peter 3-7
 Deardoff, Henry 1-4
 Dooley, Moses 1-4
 Donald, Andrew 3-13-16-18
 Daugherty, William 1-3-1-1
 Daugherty, Sarah 0-1-4-4
 Dooley, George 2-7-5-5
 Davenport, William 1-1
 Davies, Samuel B. 1-2-2-2
 Dawson, John 1-1
 Dishman, William 1-1
 Duett, Aron 1-2
 Dishman, Jeremiah 1-2-2-3
 Dooley, Thomas 1-2
 Dooley, James 1-0
 Deardoff, Henry 1-1-0-1
 Drummon, Thomas 1-1
 Davison, Samuel 1-1
 Eckhols, Jacob 3-5
 Elliott, John 1-1
 Earley, Jubal 1-1-2-2
 Ewing, Mitchell 1-2

Ewing, William	1-4-2-2	Fuqua, Isham	2-3-1-1
Eubanks, Thomas	2-3	Finny, William	0-2
Edson, Boice	1-5-2-2	Farler, William	1-3
Eubanks, John	1-1	Gray, Thomas	1-2-1-1
Edson, John	1-0	Gray, Sarah	0-1-1-1
Edson, Henry	1-1	Gibbs, John	1-1
Everitt, Simeon	1-2-1-1	Gray, William	2-2-1-1
Everitt, Jesse	1-1	Goodman, David	1-1
Everitt, Thomas	1-1	Gill, John	1-3-4-5
Estice, Joel	1-2-2-2	Gibbs, Alexander	2-2-1-1
Earley, Joshua	3-12-8-10	Goff, Joseph	1-2-3-3
Earley, Buford	0-1	Gibbs, William	1-1-3-4
Estice, Benjamin	1-3-6-6	Gibbs, David	1-1
Edens, Benjamin	1-1	Goff, John	1-3-1-1
Fuqua, Joseph Jr.	1-1	Goff, John Jnr.[?]	1-0
Federick, Michael	1-4-1-1	Guinn, Hue	1-0
1 stud horse		Goodman, Robert	1-0
Federick, Michael Sr.	1-1	Gaddy, William	1-2
Federick, Jacob	1-1	Gaddy, John	1-1
Frankenberry, William	2-1	Griffin, Doctor Samuel	0-3
Frankenberry, Samuel	1-0	Gadde, Joseph	1-2-1-1
French, William	1-2-1-1	Gadde, Sherrod	1-5-2-2
Fuqua, John	1-0	Gaddy, Bartholomew	1-3
Folding, James	1-1	Gregory, Thomas	1-0
Fuqua, Joseph	2-4-3-3	Giles, John	1-0-1-1
Fisher, John	1-1	Gilliam, Richard, Est.	
Farmer, James	1-3	1-3-4-5	
Fuqua, Daniel	1-0	Gray, John	1-3-2-2
Frith, Thomas	1-0	Gray, Burket	1-1
Ferrell, Abner	1-2	Galloway, Archy	1-2
Frith, William	1-0-1-1	Goff, Christopher	1-1
Fuqua, Nancy	0-3-2-3	Gadde, Nancy	0-1-1-1
Fuqua, Ralph	1-1	Garner, John	1-3
Follis, Peter	1-4-3-4	Gooly, Frederick	2-2
Franklin, John	1-0-0-1	Gwatkins, Charles	
Farmer, James	1-1	3-13-14-15	



Gentry, Blaxton 1-3
 Gibson, John 1-0-1-1
 Gutridge, James 1-1
 Gibbs, Mathew 1-2-2-2
 Goff, Abram 1-0
 Haynes, Thomas 1-4-7-8
 Haries, Nathaniel
 1[2?]-3-1-1
 Holley, Joshua 1-3-3-3
 Howard, James 1-1-1-1
 Huett, Stephen 1-1
 Hubbard, Thomas 1-6-2-3
 Howard, David 2-1
 Hilton, James 1-3-2-2
 Harmon, Dangerfield 1-1
 Hatcher, Julius Jur.
 1-2-0-1
 Hunter, Francis 1-1
 Hunter, Peter 1-1
 Hatcher, Julius 1-6-5-5
 Harries, Charles 2-3-3-4
 Hubbard, Stephen 1-3-1-2
 Hensley, Benjamin 1-3
 Hensley, William 1-1
 Hensley, James 1-1-0-1
 Hensley, Samuel 1-1
 Hix, Jesse 1-1-1-1
 Holley, Sanford 1-1
 Hodges, Benjamin 1-2
 Hensley, John 1-1
 Hatcher, Hardway 1-1-1-1
 Hopson, Benjamin 1-8-8-12
 Hughes, Reubin 1-3-2-2
 Hidson, Joseph 1-1
 Hawkins, Robert 1-4-6-9
 Hawkins, Little Berry
 1-0-1-1
 Hollaway, Amos 1-1
 Huett, John 2-3-1-1
 Huett, Jack 1-1
 Hughes, John 2-4-5-5
 Hughes, Harrison 1-1
 Hill, John 1-4
 Hatcher, Jeremiah 2-4-6-8
 Hardy, Joseph 0-4-3-4
 Harriss, Griffin 1-1
 Harriss, William 1-7-8-13
 Holley, William 0-1-2-2
 ordinary license
 Handalite, — [sic] 1-1
 Holley, Francis 2-7-5-7
 Humphry, Randolph 1-0
 Hensley, Lelean 0-2
 Humphry, William 1-2
 Humphry, David 1-1
 Humphry, Lewis 1-1
 Hatcher, Henry 1-3-5-5
 Hurt, Garland 1-1-1-1
 Harrison, Battle 1-2-0-1
 Holley, John Senr. 1-3
 Holley, John Jnr. 1-1
 Holley, Joseph, son Jno.
 1-0
 Hurt, John 1-3-3-3
 Hurt, William 1-1
 Hobbs, James 1-1
 Hawes, Francis 1-0
 Hincle, Jacob 1-1
 Holley, John (G C) 1-2
 Hurt, John Jr. 1-1
 Jones, Stephen 1-1
 Jones, Julius 1-1
 Jones, Charles 1-5
 Jeter, Henry 2-3-4-5
 Jeter, Pleasant 1-1
 Jeter, John 1-2
 Jeter, Elliott 1-0
 Irvine, William 1-4-9-9
 Jones, Ambros 1-1
 Jones, William 1-2-2-2
 Irvine, Joseph 3-5 1 stud
 horse
 Jackson, Jarvis 1-9-3-3
 Jones, David (Cap) 2-5-4-6
 Jackson, William 1-0
 Jones, Charles 1-1-6-6
 Jones, Jesse 1-1
 Johnson, Joseph 1-2
 Johnson, John Ser. 1-2
 Johnson, Thomas 1-1
 Johnson, John 1-2
 Johnson, Benjamin 1-4
 Johnson, David 1-1
 Johnson, Timothy 1-1
 Johnson, Nicholas 1-1
 Jones, Lewallen 1-5-11-14
 Irby, Douglass 3-2
 Irvine, Jonas 2-3
 Jones, Mrs. Jno. 0-5-12-14
 Jefferson, Thomas 1-9-27-30
 Jones, David 1-3-3-4
 Jones, Lane 1-1

BEDFORD COUNTY 1800 TAX LIST

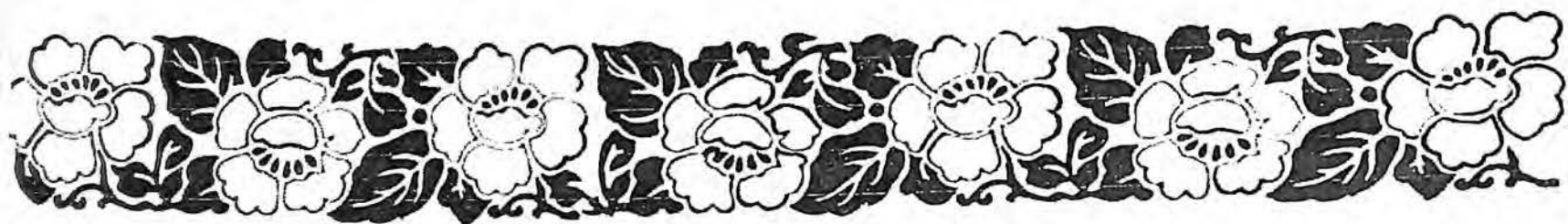
Jones, Gabriel 1-3-3-4	Moss, Henry 1-1
Karr, John 1-0	Moss, Richard, 1-1
Karr, William 1-2	Moss, Joseph 1-1
Karr, Alexander 1-1	Merritt, Thomas 2-4-2-2
Karr, Thomas 1-1	Merchant, Mathew 1-4
Kingsor, John 1-3	Merchant, William 1-2
King, Harmon 1-1	Miller, William 1-6-4-6
King, Gilliam 1-3-3-3	Millinner, William
King, Martin 1-1	1-4-8-10
King, John 1-1	Millenner, Williamson
Karns, Michael, & sons	1-1-2-2
3-9-1-1	Millener, John 1-1
Karns, George 1-5	Millinner, William 1-1
Kesley, John 2-0	Moore, Robert 1-4
King, Mrs. 0-0-2-2	Maybury, Frederick 1-4
Key, James 1-2	McMullins, Mathew 2-3
Kingsor, George Sen. 2-2	McMullins, William 1-3
Kingsor, George Jr. 1-1	Millenner, Richard 1-0
Littlepage, John 1-1	Milam, Micajah 1-2
Lane, Faris 1-3-2-2	McCraw, Edward 3-2-1-1
Leftwich, Peyton 1-2-3-4	McCraw, James 1-1
Lambert, George 1-2	Mastin, Peter 1-1
Lambert, Charles, Est.	Merritt, Major 1-2
0-3-2-3	McDonald, George 2-6-9-9
Letsingar, Philip 1-1	Macy, Micajah 1-1
Lockett, David 0-2-0-1	Miller, Jacob 1-1
Lockett, Mary 0-1-2-2	Mayberry, Henry 1-6
Logwood, Thomas Jr.	Merriweather, Francis
1-3-3-3	1-8-15-19
Leftwich, James 1-5-4-6	Murphy, John 1-0
Lee, Richard 1-3-2-3	Moore, Benjamin 1-7-6-8
Lowry, William Senr.	Moorman, James 1-2-1-1
1-1-3-4	Mead, Nicholas 1-3
Lowry, William Jr.	Mouzley, Arthur 1-8-20-26
1-6-1-2	McCann, John 1-0
Lee, Richard (Forest)	Murphy, Michael 2-2
1-4-5-7	Milam, William 1-1
Lowry, Thomas 1-2-3-3	Markram, Arthur 1-1-1-1
Lowry, John 1-2	Markram, Thomas 1-1
Logwood, Burrell 1-3-3-3	Murphy, James 1-1
Leftwich, William	Murphy, William 1-1
1-19-28-26	Merchant, Stephen 0-2
Lockett, Jesse 1-2	Mitchell, John 2-1
Lambert, Charles 1-4-2-4	Miness, Culohill 1-10-13-
Logwood, Thomas 1-10-10-12	-13 4-wheel coach
Leash, Jacob 1-2	Neal, Jacob 1-0
Leftwich, John 1-9-5-6	North, Abraham, Estate
Moore, Obediah 1-2	0-4-6-6
Moore, Tandy 1-1	North, John 1-5-5-7
Moore, Thomas 0-1-5-5	Noel, Cornelius Junr. 1-1

Noel, Thomas 1-4-3-4
 Neal, Daniel 1-1
 North, David 1-5-6-6
 Neal, John 1-0
 Nance, Thomas 2-6-5-6
 Neal, Zachariah 1-4-1-1
 Nance, Archy 1-2-2-3
 Neal, Zaph. 2-3
 Noel, Cornelius 4-13-17-19
 Owen, Barnett 1-1
 Ownsby, Powel 1-4-2-3
 Overstreet, James 1-1
 Overstreet, John 1-2-1-1
 Owenn, James 1-4-1-1
 Oglesby, Richard 2-4-4-4
 Otey, John H. 1-7-3-5
 Owen, William 1-3-1-1
 Pernell, Peter 1-1-1-1
 Pate, John 1-2-3-4
 Patterson, William 1-5
 Patterson, Jarratt 1-1
 Prossor, Otey 2-3-0-2
 Payne, Archy 1-8-13-13
 Price, Robert 1-4-3-5
 Poindexter, Samuel 1-5-5-6
 Poindexter, Joseph 2-5-7-8
 Poindexter, John 1-1
 Poindexter, William 1-3-1-1
 Pettett, Lewis 1-1
 Pettett, Thomas 1-0
 Patross, James 1-4-5-6
 Palmore, Benjamin 2-3-1-3
 Rice, Charles 1-5-1-1
 Pagett, Frederick 1-2
 Powell, Aron 2-4-1-1
 Penn, James 0-0-6-6
 Price, James 1-0
 Purkins, Elisha 1-9-10-12
 Parker, Aron 1-0
 Penn, James 1-0
 Quarles, Capt. Wm.
 1-11-4-8
 Quarles, William 1-5-5-6
 2-wheel chair
 Reice, John 1-1
 Reynolds, Alexander 1-2
 Robinson, Benjamin 1-4-5-5
 Rucker, William 1-7-4-6
 Read, Samuel 1-1
 Rusher, Andrew 1-4-1-2
 Rusher, James 1-1
 Read, Nathan 1-5-10-10
 Robinson, James 1-5-2-2
 Rucker, George 2-5-5-5
 Reynolds, Jonas 1-1
 Reynolds, Obediah 1-2-2-3
 Reynolds, John 1-3
 Robinson, William 1-1
 Read, James 1-2
 Rhodes, William 1-4
 Ray, Luke 2-7-7-8
 Ray, Luke Jnr. 1-1-1-3
 Read, Joseph 1-1
 Randolph, Thomas M.
 1-6-14-16
 Robertson, Arthur 1-2-3-3
 Ray, James 1-0
 Ripley, James 1-4-2-2
 Reynolds, Jesse 1-1-2-2
 Rosebrooke, Robert 1-1
 Rice, Charles 1-2
 Rice, David 1-1
 Rice, Samuel 1-1
 Rice, William 1-0
 Rice, John 1-1
 Ragsdale, William 1-1
 Sharp, John 3-8-1-1
 Saunders, James 1-2-1-2
 Steward, Nathaniel 1-0
 Standley, George 1-2-1-1
 Standley, Pleasant 1-0-1-1
 Standley, Pleasant Senr.
 1-1
 Saunders, Julius 1-2-3-4
 Smith, Achilles 1-0
 Steward, Charles 1-4-5-7
 Strange, Robert 1-4-6-6
 Slaughter, Joseph 1-7-7-8
 Sutton, Christopher
 2-5-5-7
 Smith, David 1-1
 Salmons, Robert 1-2-1-1
 Salmons, Joel 1-1
 Salmons, Nathan 1-2
 Streach, John 1-0
 Sidney, Fortunatus 1-0
 Stiff, James 1-2
 Smith, Stephen 1-2
 Steward, Charles 1-0
 Smith, Thomas 1-1

BEDFORD COUNTY 1800 TAX LIST

Scott, James 1-4	Taylor, Richard 1-1-3-4
Smith, Bowker 0-2-4-4	Tucker, Jesse 1-3-2-2
Steel, Francis 1-2	Tinsley, Edward 1-2-2-4
Shearman, Henry D. 1-5-6-7	Thomas, James 1-1
Stone, George 1-1	Taylor, Joseph 1-0
Scott, William (G C)	Taylor, George 1-1-1-1
1-2-3-3	Tate, Nathaniel 1-2-1-2
Stiff, Jacob 2-2	Thomas, Joshua 1-2
Sails, Thomas 1-4-1-2	Wade, David 1-4-2-2
Skaggs, William 1-1	Wade, James 1-1
Sharp, Sampson 1-4	White, James 1-6-3-4
Sled, John 1-2	White, Jacob 1-3-5-5
Sharp, Noah 1-3	Williams, Joshua 1-3
Stratton, Isaac 1-1	Williams, Walter 1-1
Scott, David 1-2	Wills, Justian Jnr. 2-1
Steel, George 1-5-0-1	Wills, William 1-3
Scott, Samuel 0-2-10-11	Wills, Justian Senr. 2-3
Stone, William 1-2	Whitton, William 1-4-7-7
Scott, John 1-1	Whorton, John 1-6-4-4
Scott, Drury 1-2	Wilkerson, John 1-1
Step toe, James 2-13-16-19	Wilkerson, Parsons 1-0-1-1
4-wheel coach, 2-wheel	Wilkerson, Owen 1-1
chair	Wilkerson, Joseph 1-5-4-5
Taylor, James 2-2	Wheat, Joseph 2-3-1-1
Taylor, Edmond 1-1	Wheat, Zachariah 1-3
Taylor, William 1-1	Wheat, John 1-2
Taylor, John 1-2	Wheat, Joseph Jnr. 1-1
Taylor, William Snr. 1-1	Wheat, Zachariah [blank]
Taylor, Robert 1-1	Whorley, Zachariah 1-1
Tracy, Solomon 1-2	Whorley, Mathew 1-3
Taylor, Washington 1-0	Williams, John 1-3
Toney, Charles 1-0	Watson, Johnson 2-4
Thorp, Thomas 1-7-4-4	Watson, William 1-3
Thomas, William 1-0	Woods, Jeremiah 1-2
Tracy, William Jnr. 1-4	Wright, John 1-5-3-3
Tracy, William 1-2	Wright, Ellice 1-0
Terry, Enock 1-2-1-1	Watts, William 1-0
Turpin, William 0-3-12-14	Winston, Edmond 0-3-8-10
Turner, James 1-11-8-8	Walrund, James 1-0-2-3
1 stud horse	Whitton, Elisha 1-1-1-2
Tate, Henry 1-0	Ward, Seth 1-9-13-15
Tate, John 1-0	Wilson, Champion 1-1
Tinsley, Anthony 1-0-1-1	Wilson, Vinson 1-1
Tate, Jesse 0-10-8-10	Wiatt, Thomas 1-7-11-13
Tolley, Christopher 1-1	4-wheel coach
Tolley, Thomas 1-0	Wheeler, William 1-2-2-3
Trimble, James 1-0	Wilson, Robert 1-1
Taylor, Joseph 1-1	Wilson, James 1-2
Thomas, John 1-2	Wilson, Nathaniel 1-1-0-1
Tinsley, James 1-2-0-2	Watson, John 3-9-2-2

Winfry, Israel	2-3	Waters, John	1-0
Welch, James	1-1	Waters, Francis	2-4-2-2
Wright, Isaac	1-0	Wilkerson, James	1-2
Wills, Ignatius	1-0	Wright, William	1-4
Williams, Elisha	1-2	Watts, John	1-10-13-14
Williams, John	1-2	Woods, Jonathan	1-1
Williamson, James	2-5	Woods, Jerry	1-2
Williamson, James Jnr.	1-1	Wheat, John	1-2
Woods, Josiah	1-1	Wheat, Joseph	1-1
Woods, James	1-1		

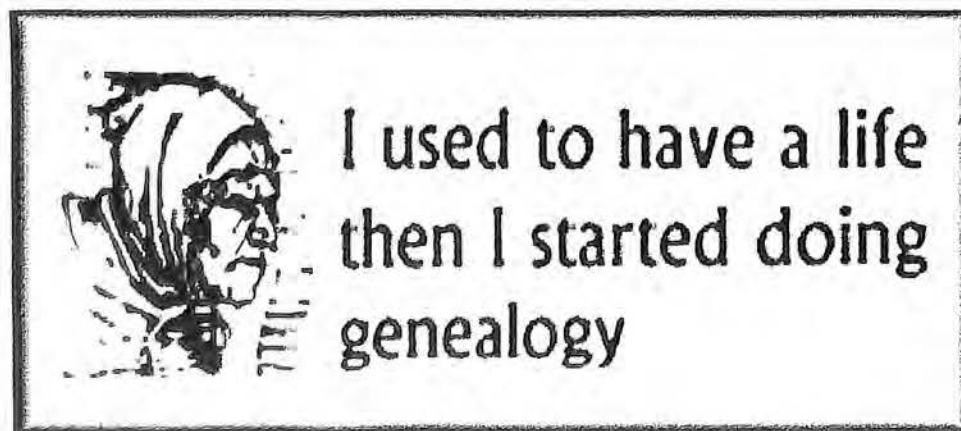


New Virginia Room Webpage

As some of you have likely noticed, there are changes and additions to the Roanoke Public Library's web site quite often now, whether it's a new page being created or events being updated. Recently the Virginia Room has rolled out a number of pages relating to their collection, classes, finding aids, and so on.

To view their main page either go to roanokeva.gov/library and click on "Virginia Room" on the left side of the page or use the following link on your web browser :

<http://www.roanokeva.gov/WebMgmt/ywbase61b.nsf/vwContentByKey/N27C83Z8562WALNEN>



Botetourt County Death Records by Charles T. Burton - Continued

- KESSLER, Christian - d 27 Sep 1797 - d after 1850 - f J[ohn C KESSLER] - m Elizabeth - father of Isaac KESSLER - grave Brick Union Cem - h/o Elizabeth
- KESSLAR, Christian Whitfield - b 14 Nov 1853 Bot Co - d 11 Mar [month # is written over] - age 1y 4m 1d - f Abraham KESSLAR Jr - m Mary - cd casualty - rep by father - Ref Death Bk; Old Glade Creek gravestone
- KESSLER, Christopher - b [ca 1797 or 1801 Md] - d 16 Mar 1869 Bot Co will - f [John KESSLER] - m [Mary McCRAY is marked out, replaced with Nancy] - wife Elizabeth HAMILTON - WB L p486, everything to wife Elizabeth - Bot Co DB 35 p723 gives his death date - Ex bond 8 Mar 1869 Elizabeth A KESSLER
- KESLER, Clara A - b 12 June 1846 - d 17 Aug 1871 Bot Co - f [Henry DAVIS] - m [Adelaide] - w/o J[ames] H KESLER - grave Old Glade Creek Cem
- KESSLER, Cullie A - b 4 Jan 1881 - d 21 Mar 1917 - f James E KESSLER - m Amelia A QUIGLEY - buried Troutville Cem
- KESSLER, Daniel - b [ca 1825] - d by 12 Jan 1852 [Bot Co] - f [Christian KESSLER] - m [Elizabeth PAINTER] - Adm Christian BOWER
- KESSLAR, Daniel - ca 1797 [1 Feb 1798] Bot Co - d 27 Jan 1853 - age 55y 11m 20d - f Jacob KESSLAR - m [Elizabeth] - cd nervous disease - rep by wife Susan [NININGER] KESSLAR - [Troutville Cem] - Ex Susannah KESSLER
- KESSLER, Daniel H - b 16 Feb 1805 - d 14 July 1886 Bot Co - f [Abraham KESSLER] - m [Catherine HEPLER] - h/o Margaret J KESSLER (1826-1899) - Ref Old Glade Creek gravestone
- KESSLER, Demaris Ann - b 15 Dec 1838 - d 21 May 1899 Bot Co - f [Joseph LINKENHOKER] - m [E] - hus Benjamin KESSLER - buried Lithia Bap Cem
- KESSLER, Doris D (male) - b 28 Sep 1839 - d 29 Mar 1845 Bot Co - f Abraham KESSLER - m Eliza J - Ref Old Glade Creek Cem
- KESLER, E[lijah] N - b 13 Apr 1848 - d 8 (or 25) Nov 1913 Bot Co (Death Cert) - f [Daniel C KESLER] - m [Jane KENT] - [md #1: 7 Jan 1869 Bot Co Elizabeth; md #2: 22 Oct 1890 Bot Co Mrs Lottie (___) TROUT - cd Brights Disease - Ref New Glade Creek Cem
- KESSLER, Elizabeth - b 17 Mar 1801 - d after 1850 [Bot Co] - f [Henry PAINTER] - m [Susannah] - w/o Christian KESSLER - grave Brick Union Cem
- KESSLER, Elizabeth - b 16 June 1761 - d 30 Sep 1822 [Bot Co] - age 61y 4m 14d - w/o John KESLER (1761-1847) - Ref Brick Union gravestone
- KESSLER, Elizabeth - b Apr 1769 - d 13 Aug 1844 [Bot Co] - f [Shearer] - w/o Jacob KESSLER (1757-1824) - Ref Troutville gravestone
- KESSLER, Elizabeth B - b 26 Aug 1826 - d 25 Jan 1904 [Bot Co] - f [Samuel RADER] - w/o Isaac KESSLER - Ref Brick Union gravestone
- KESSLER, Ellen - b 25 Aug 1845 - d 27 Nov 1919 Bot Co - f [Thomas RADY] - m [Margaret] - hus J[acob] B KESSLER - buried Andrew Chapel

- KESSLER, Ellison - b 17 Sep 1903 Bot Co - d 27 Nov 1914 - f A[braham] G KESSLER (b Bot Co) - m Corah (ORANGE) (b Bot Co) - buried Forest Chapel Cem - cd diptheria
- KESSLER, Eva Dorothea - b 14 Jan 1734 - d 24 July 1798 Bot Co - f Christian LAYMAN - w/o John KESSLER - Ref Old Glade Creek gravestone
- KESSLER, Ferdinand M - b 1845 - d 1927 Bot Co - f [George KESSLER] - m [Rosanna LINKENHOKER] - wife Martha J - buried Andrew Chapel
- KESSLER, Francis M "My Husband" - d 11 Nov 1837 [I11] - d 23 June 1874 Bot Co - f [Abraham KESSLER] - m [Elizabeth DAVIS] - h/o Mollie S [MURRY] - Ref Old Glade Creek gravestone
- KESSLER, G[eorge] W - b 4 Feb 1820 - d 14 Oct 1891 Bot Co - f [Jacob KESSLER] - m [Barbara BOWER] - wife [Rosanna LINKENHOKER] - buried Copps Cem
- KESSLAR, George Thomas - b ca 1832 Bot Co - d 30 May 1862 Richmond, Va - age 29y 6m 15d - f [Henry KESSLER] - m [Elizabeth HOUSMAN] - cd typhoid fever - rep by wife Mary E [SPIGLE] KESSLAR
- KESSLER, Guy - d 25 Nov 1873 - d 22 Aug 1881 Bot Co - f F[rancis] M KESSLER - m M[olly] S - Ref Old Glade Creek Cem
- KESSLER, Harry - b 1884 - d 1907 - f John H KESSLER - m Mollie NACE - grave Brick Union Cem
- KESSLER, Henry Hepler - b ca 1845 Bot Co - d 25 Feb 1857 - age 11y 2m 25d - f William C KESSLER - m [Nancy (McCULLY) or (McCULLOCH)] - cd putrid sore throat - rep by father - buried Mt Union
- KESSLER, Isaac - b 4 Jan 1827 Bot Co - d 23 Sep 1912 - f Christian KESSLER (b Bot Co) - m Elizabeth (PAINTER) (b Bot Co) - buried Brick Union - cd artereo sclerosis - Ref Death Cert; Brick Union gravestone - h/o Elizabeth B KESSLER (1826-1904)
- KESSLER, J B - b 28 June 1847 - d 12 Mar 1919 Bot Co - f [George KESSLER] - m [Rosanna LINKENHOKER] - wife Ellen - buried Andrew Chapel
- KESLAR, Jacob - b 22 Apr 1757 - d 20 July 1824 Bot Co - Ref WB C p570, will not dated - wife Elizabeth; Ch John, Jacob, Henry, Catherine, Daniel, Andrew, Benjamin, David, Samuel, Elizabeth, George - h/o Elizabeth KESSLER 1769-1844 - Ref #2 Troutville gravestone
- KESLER, Jacob C - b 17 July 1850 - d 29 Dec 1918 Bot Co - f [William B KESSLER] - m [Mary M BLACK] - wife Mary - [buried Andrews Chapel Cem]
- KESSLER, James E - b 12 Feb 1846 - d 25 June 1796 - f William B KESSLER - m Malinda BLACK - wife Amelia A QUIGLEY - buried Troutville Cem
- KESSLER, Jennie E - b 1902 Fkln Co - d 1930 - f H L COOPER - m Alice - hus Chaltee C KESSLER
- KESSLER, John (or Johannes) - b 8 Mar 1728 - d 24 Mar 1823 Bot Co - age 95y 0m 16d - h/o Eva Dorothea (LAYMAN) KESSLER - Ref Old Glade Creek gravestone

KESSLER, John (md) - b ca 1775 marked out, [24 May 1772] Pa - d Feb 1850 [Bot Co] - age 75y - f [Andrew KESLER] - m [Mary] - wife [#2 Mary (called Nancy) McCRAY this has been marked out and Nancy WASKEY written in] - cd old age - Ref 1850 Mort Schedule of Bot Co

KESLER, John - b 9 Feb 1761 - d 2 Jan 1847 [Bot Co] - f [John KESLER] - m Dorothea LEMMON] - h/o [#1] Elizabeth KESLER (d 1822) [#2 Polly] - Ref Brick Union gravestone

KESSLER, John Henry - b 29 June 1838 - d Jan 1912 - f [Christian KESLER] - m [Elizabeth PAINTER] - h/o Mollie (NACE) KESLER - grave Brick Union Cem

KESSLAR, John Henry - b ca 1843 Bot Co - d 11 May 1854 - age 10y 5m 24d - f William B KESSLAR - m Mary Malinda [BLACK] - cd putrid sore throat - rep by mother

KESSLER, John W[alter] - b 28 Dec 1869 - d 20 Oct 1941 Bot Co - f William H KESSLER - m Harriet E LINKENHOKER - Ref New Glade Creek gravestone

KESSLER, Joseph - b 1803/4 - d 1806 Bot Co - age 2y 5m - buried Troutville Cem

KESSLER, Joseph - b ca 1798 Va (census #1656) - d by 13 Dec 1852 [Bot Co] - f [Benjamin KESLER] - m [Margaret CLEAR] - [wife Mary M SPICKARD] - Adm Samuel SPICKARD

KESSLAR, Joseph - b ca 1837 Bot Co - d 1 Jan 1853 - age 15y 8m 16d - f Daniel KESSLAR - m Susan [NININGER] - cd pneumonia - rep by mother

KESSLAR, Joseph V - b ca 1839 Bot Co - d 5 May 1862 Williamsburg, Va - age 23y - f Joseph KESSLAR - m Mary M [SPICKARD] - cd gunshot - rep by mother

KESSLER, Josie - b 9 May 1909 Bot Co - d 16 Nov 1914 - f A G KESSLER (b Bot Co) - m Corah (ORANGE) (b Bot Co) - buried Forest Chapel Cem - cd diptheria

KESSLER, Laura A - b 7 Mar 1857 - d 16 Nov 1862 Bot Co - f Isaac KESSLER - m Elizabeth B - buried Brick Union Cem

KESSLAR, Lewis - b ca Apr 1825 Bot Co - d 13 June 1859 - age 34y 2m 9d - f (Olive) Christian KESSLAR - m Elizabeth (PAINTER) - cd "newraligia" - rep by father - h/o Elizabeth [DENTON] KESSLAR

KESSLER, Lewis S[imeon] - b 27 or 4 Dec 1855 Bot Co - d 16 Apr 1916 - f John KESSLER (b Va) - m Susie (RICHARDSON) (b Va) - Troutville Cem marked out & replaced with Foutz Cem near Bonsack - cd cerebral hemorrhage

KESSLER, Louvenia Ida - b 13 Nov 1855 Bot Co - d 15 Sep 1870 Amsterdam Twsp - age 15y 9m 3d - f Abraham KESSLER - m Mary M - cd worm disease - Ref Old Grave Creek gravestone - rep by father

KESSLER, Lydia A - b 14 Aug 1836 - d 22 July 1918 Bot Co - f [Thomas C FALLS] - m [Eliza J] - hus Andrew J KESSLER - buried Lithia Bap Cem

KESSLER, Madison Woodson - b 10 June 1848 - d 27 Mar [or May] 1905 - f [William KESSLER] - m Nancy McCULLOCH - grave Mt Union Cem

KESSLER, Margaret J - b 17 Mar 1826 - d 9 Dec 1899 Bot Co - f [Joseph KESSLER] - m [Mary M SPICKARD] - w/o [#2] Daniel H KESSLER (1805-1886); [#1 James LEMON] - Ref Old Glade Creek gravestone

KESSLER, Martha J - b 1850 - d 1922 Bot Co - f [John HAMMITT] - m [Elizabeth] - hus Ferdinand M KESSLER - buried Andrew Chapel

KESSLER, Martha J - b 13 Aug 1856 - d 17 Feb 1922 - f T A RICE - m Fannie - hus George C?G KESSLER - buried Troutville Cem

KESLER, Mary [E] - b 1854 - d 28 Mar 1918 Bot Co - age 64y - f [Thomas RADY] - m [Margaret] - hus Jacob C KESLER - buried Andrew Chapel

KESLER, Mary "Polly" - b 21 May 1788 - d 16 Nov 1825 - wife #1 ZIMMERMAN; #2 John KESSLER - grave Brick Cem - [her ZIMMERMAN ch include John, Bronson, & William

KESSLER, Mary A - b 18 Jan 1844 - d 3 June 1863 Bot Co - f [William C KESSLER] - m [Nancy McCULLOCH] - buried Mt Union

KESSLER, Mary Ann - b 10 July 1832 - d Bot Co - f [John PEERY] - m [Elizabeth] - hus Benjamin KESSLER - buried Lithia Bap Cem

KESLER, Mary S - 12 Apr 1865 Bot Co - d 1 Dec 1915 [Bot Co] - f Overtern [or Spessard] THOMAS - m (Mary has been marked out) [Katherine PETTIT] (b Bot Co) buried Roanoke Cem - cd Brights disease - [hus Palmer H KESSLER] - [buried Foutz Cem (no stone)

KESSLER, Mary Susan "Mollie" - b 29 June 1850 - d 12 Nov 1889 [Bot Co] - f [G W F NACE] - m [Cassy] - w/o John KESSLER - Ref Brick Union gravestone

KESSLAR, Mary T - b ca Jan 1856 Bot Co - d 25 Nov 1862 - age 6y 10m 6d - f William KESSLAR - m C[hristiana NOFFSINGER] - cd diptheria - rep by father

KESSLER, Mattie Danville - b 10 Jan 1856 - d 16 Jan 1929 Bot Co - f [Daniel LIPES] - m [Martha] - hus [Peter B KESSLER] - buried Copps Cem

KESSLER, Mollie Bell - b [19 Apr] 1884 [or 1874] [Bed Co] - d [18 Mar] 1953 Bot Co - f [WRIGHT] - hus [md 1896 Rke city] John W KESSLER [1869-1941] - Ref Glade Creek Cem

KESSLER, Montie - d 1878/9 Bot Co - f John KESSLER - m Mollie - buried Brick Union Cem

KESSLER, Nancy Ann - b 15 Sep 1819 Bot Co - d 12 Aug 1860 [Bot Co] - age 44y - f McCULLOCH - cd consumption - rep by hus William C KESSLER - grave Mt Union Cem

KESSLER, Nannie B (unmd) - b 20 Dec 1884 - d 23 Mar 1926 - f James E KESSLER - m Amelia A QUIGLEY - buried Troutville Cem

KESSLER, Orena - b ca 1834 Texas - d 21 Apr 1860 Texas - age 26y - f (William N KESSLER marked out; replaced by [Henry OPENSHAIN] - m (Olena marked out; replaced by [Martha HAGENS] - cd diahorhoia - rep by hus William N KESSLER

- KESSLER, Palmer H - b [21 Feb] 1870 - d 1940 [Bot Co] - age 70y - f [James H KESSLER] - m [Clara Ann] - h/o Mary G [Jane THOMAS] KESSLER - Ref undertaker's marker in Foutz Cem, near Bonsacks; Obituary
- KESSLER, Peter [B] - b 25 Dec 1853 - d 4 Dec 1922 Bot Co - f [George KESSLER] - m [Rosina LINKENHOKER] - wife [Martha "Mottie" LIPES] - buried Copps Cem
- KESSLER, Phillip [Henry] - b 8 Feb 1822 - 19 Oct 1893 Bot Co - f [Jacob KESSLER] - m [Barbara BOWER] - wife [Delilah LINKENHOKER] - buried Lithia Bap Cem
- KESSLER, Phoebe - b ca Mar 1765 - d 11 May 1815 Bot Co - age 50y 2m - f [Rightmere] - w/o Daniel KESSLER - Ref Old Glade Creek gravestone
- KESSLER, Rachael - b Apr 1802 - d 7 Mar 1803 Bot Co - age 11m 26d - f B[enjamin KESSLER] - m M[argaret CLEAR] - Ref Old Glade Creek Cem
- KESSLAR, Saluda - b ca 1846 Bot Co - d 30 June 1862 - age 15y 8m 11d - f John KESSLAR - m Eliza [RICHARDSON] - cd inflammation of brain - rep by father
- KESSLER, Samuel - b [8 Sep] ca 1795 Md - d 11 Dec 1856 Bot Co [Bible 13 Dec] - age 61y 3m 3d - f John KESSLER - m Nancy WASKEY - cd decline - rep by wife Nancy [BEANE] KESSLER - Adm William KESSLER - [was not in 1850 Bot Co census] [All Co #422]
- KESSLAR, Sarah - b ca 1855 Bot Co - d 5 July 1856 - age 1m - f William C KESSLAR - m Nancy [McCULLOCH] - cd casualty - rep by father - buried Mt Union
- KESSLER, Sarah C - b 11 June 1850 - d 4 Oct 1875 - f Isaac KESSLER - m Elizabeth RADER - hus George G KESSLER - buried Troutville Cem
- KESSLER, Sarah Catherine - b 6 Mar 1846 - d 4 Mar 1847 Bot Co - f Abraham KESSLER - m Mary M - Ref Old Glade Creek Cem
- KESSLER, Susan - b 11 Apr 1802 - d 22 July 1881 Bot Co - f Christian NININGER - m [Elizabeth SNIDER] - hus Daniel KESSLER - buried Troutville Cem
- KESLER, Tena A - b July 1884, Seito Co, Ohio - d 13 June 1912 [Bot Co] - f Christo T HUMBERT? - m Barbie (GRISTO)? - buried Portsmouth, Ohio cem - cd TB
- KESSLER, Texanna - b [1860] Rb Co - d 23 Apr 1860 - f William N KESSLER - m Olena - cd diahorhoia - rep by father
- KESSLER, Thomas - b 1851 - d 1857 Bot Co - buried Mt Union
- KESSLER, Ulicia M - b 10 Mar 1856 Bot Co - d 1 Dec 1857 - age 0y 22m 0d - f A[rchibald] W KESSLER - m [Mary Catherine PECK (d/o Martin)] - cd croup - rep by father
- KESSLER, Virginia I - b [25 Sep] 1913 - d [Mar] 1935 [Bot Co] - f John William KESSLER - m [Margaret C SNODGRASS] - Ref Foutz Cem
- KESSLER, Virginia T - b 6 Dec 1848 - d 3 Mar 1849 Bot Co - f Isaac KESSLER - m Elizabeth
- KESSLER, William - b ca 1819 - d 15 Aug 1820 Bot Co - age 1y - f Daniel KESSLER - m Catherine [BLACK] - Ref Old Glade Creek Cem

KESSLER, William G? [Cox] - b 10 Oct 1808 - d 26 June 1882 - f [David KESSLER] - m [Sarah COX] - h/o Nancy (McCULLOCH) KESSLER - Ref Mt Union gravestone

KESLER, William Harvey - b 28 June 1846 Bot Co - d 28 Aug 1916 Bot Co - f not known [Philip KESSLER] - m not known [Delila LINKENHOKER] - buried Back Creek Cem - h/o [Harriett E (LINKENHOKER)] - buried Lithia Bap Cem

KESSLAR, William J - b ca 1851 - d 9 Sep 1854 - age 2y 11m 7d - f George KESSLAR - m Mary [E SPIGLE] - cd flux - rep by father

KESSLAR, William N - b ca Mar 1829 [29 Oct 1828] Bot Co Census #1731] - d 27 June (the month is circled) 1862 - age 33y 3m - f [Daniel KESSLER] - m Susan [NININGER] - cd typhoid fever - rep by mother - [Troutville Cem] - h/o Orlena (OBENSHAIN) KESSLER - Admr John KESSLER

KEYFOGGER see KEFAUGER

KEY(S) see Catherine GURTNER, Philip GORTNER

KEYSER see also KAYSER

KEYSER, Martha J - b 1 Jan 1842 Va - d 19 June 1913 - f Addison HOYLMAN (b Va) - m Malinda (ARMENTROUT) (b Va) - buried Locust Bottom Cem - cd dysentary

KEYTON, Bernard - d by 11 Feb 1823 (dau called an orphan) - dau Polly

KIDD see Nancy McCARTY, Annie WHITMORE

KILMER, George - d by Mar 1823 - Ref WB C p395, will dated 21 Oct 1819 - wife Catherine; Ch Elizabeth (md ___ HAMMITT), Susanna Eve (md ___ COPP), Barbary, Magdalene (md ___ JOHNSON), Easter, Margaret, William, Nancy, Sarah, George

KILMORE, Bettie - b ca 1788 - d 15 Mar 1870 Fincastle Twsp - age 82y - cd old age - rep by nephew Jacob WILHELM

KIMBERLING see William REED, John HENDERSON

KIMBERLING, Jacob - d by 11 Sep 1843 (ch called orphans - ch Isabella Ann, James M, Caroline E, Harriet V

KIMBERLING, Paulzer - d by Oct 1808 - Ref WB B p197, will dated 17 June 1808 - wife Sarah; ch James, Martha (md ___ MATTHEWS), Agnes (md ___ PITZER), Rebecca (md ___ PITZER), John, Jacob - Others: Jean GLENN (her dau Sarah GLENN)

KINCADE see KINKEAD

KINZER, Marcella James (female) - b ca 1854 Bed Co - d 16 Oct 1855 Bed Co - f George M S KINZER - m M A - cd hooping cough - rep by father

KING see Thomas REYNOLDS, Mary Grace ARMENTROUT, Raymond Barker CAMPBELL, Olie Edward CRIST, Charles T LAYMAN, James Hick STULL

KING, ___ - d by 10 Sep 1770 (his orphan mentioned) - orphan (not named, complains of mistreatment by his master Andrew DONNALY)

KING, Albert L - b 16 July 1892 Floyd Co - d 4 Aug 1914 - f Andy P KING (b Rke Co) - m Emily (MILLS) (b Rke Co) - buried Troutville Cem - cd struck by train

KING, Bettie E - b 21 Nov 1861 - d 1 July 1901 - grave Mt Mariah Lutheran Cem

KING, Joseph H - b 19 Dec 1849 - d 22 July 1919 - h/o Sarah M KING (d 1921) - grave Mt Mariah Lutheran Cem

KING, Nancy L - b ca 1845 All Co - d 9 Oct 1856 - f Charles KING - m Jane - cd flux - rep by father

KING, Roy Lewis - b 15 Aug 1895 Oriskany, Bot Co - d 8 Oct 1915 - f John L KING (b Oriskany) - m Dora Bell (REID) (b WV) - buried Oriskany Cem - cd accidental rifle shot

KING, Salina C - b ca 1843 All Co - d 1 Nov 1856 - f Charles KING - m Jane - cd flux - rep by father

KING, Sarah J - b ca Apr 1833 Bot Co - d 13 Aug 1858 - age 25y 4m - f Andrew LEMON - m [Mary] Ann [ELLIS] LEMON - cd consumption - rep by hus Mansfed KING

KING, Sarah M - b 16 July 1851 - d 6 Dec 1921 - w/o (J is marked out) W H KING (d 1919) - grave Mt Mariah Lutheran Cem

KING, W H - b 23 Nov 1897 - d 15 Jan 1919 - grave Mt Mariah Lutheran Cem

KINGEN, James - d by 9 Aug 1814 (son called an orphan) - son James

KINGRUGH, ___ - d by 8 Dec 1801 (dau called an orphan) - dau Polly

KINKEAD see Peter WRIGHT

KINSLEY see Eliza PAINTER

KINSWORTHY, Thomas - d by 14 Oct 1822 (son called an orphan) - son John (under 14)

KINZIE see Catherine GISH, Daniel Saylor GISH, Nancy A ISAACS, Abe K LAYMAN, Annie V LAYMAN, Charles E LAYMAN, David NOFFSINGER, David NOFFSINGER, Hannah V NOFFSINGER, Eugene Kinzie ROGERS, Edward SNIDER

KINZIE, Cassie - b 1 Dec 1809 - d 4 Oct 1865 - f [GISH] - [w/o Daniel KINZIE] - Ref Daleville gravestone

KINSEY (or KINZIE), Catherine - b ca Oct 1773 - d 12 Nov 1839 - age 66y om 25d - f [ELSWODE] - w/o Abraham KINSEY - Ref Daleville gravestone

KINZIE, Daniel - b 6 Feb 1809 - d 8 Mar 1885 - f Daniel KINZIE - m Elizabeth BERRY - h/o Isobel KINZIE (1813-1883) - Ref Daleville gravestone

KINZIE, Emma E - b 8 Oct 1850 - d 15 June 1873 - f G R MUMBERD - m S A - w/o Caleb G KINZIE - grave Old Glade Creek Cem

KINZIE, Hezekiah - b ca 1854 - d 28 June 1854 - f Samuel F KINZIE - m Nancy - cd flux - rep by father

KINZIE, Isobel - b 13 Dec 1813 - d 23 July 1883 - w/o Daniel KINZIE (1809-1885) - Ref Daleville gravestone

KINZIE, J C - b 10 Mar 1839 Va - d 17 June 1913 Bot Co - f Daniel KINZIE (b Va) - m Cassie (GISH) (b Va) - buried Daleville Cem - cd (can't read)

KINZEY, Jacob - d by 12 Dec 1809 (daus called orphans) - f [Johannes KINZEY] - m [Christina] - daus Polly (over 14); Elizabeth (over 14)

KINZIE, John - b ca Aug 1859 - d 13 May 1860 - age 9m - f Nathan KINZIE - m Elizabeth - cd dyptheria - rep by gf Daniel KINZIE

KINSEY, Martha G - d by 14 May 1860 - Adm James SNIDER

KINZIE, Nathan G - b ca 1835 - d 13 Apr 1860 -age 25y - f Daniel KINZIE - m [Cassy GISH] - cd dyptheria - rep by father - h/o Elizabeth KINZIE

KINZIE, Osker F - b 1 Jan 1880 Bot Co - d 15 Aug 1912 - f C[aleb] G KINZIE (b Bot Co) - m Ellen O (NININGER) (b Bed Co) - buried Daleville Cem - cd TB

KIRBY, Thomas - b 11 Nov 1827 - d 30 Aug 1874 - Ref Daleville gravestone

KIRK see Archibald SLOAN

KIRKHAM see Mrs Gilliam WILKERSON

KIRKHAM, Henry - d by 10 Mar 1770 (ch called orphans) - ch Margaret (over 14), Elizabeth (over 14), Benjamin (over 14)

KIRKMAN see CIRKMAN

KISH see GISH, John McClARE

KISSINGER see KESSINGER

KITCHEN see Joseph HAYNES

KITCHEN, Henry - d by 13 Sep 1791 - Ref WB A p316, appraisal & Admr bond - admr Margaret KITCHEN

KITTINGER, Jacob - d by 27 Oct 1814 - Ref WB B p410, appraisal

KLEPPER see CLIPPER, twins DAVIS

KLEPPER, John - b 1 Mar 1828 Hawkins Co, TN - d 19 Nov 1914 - f Peter KLEPPER (b Pa) - m Catherine (MYERS) (b Pa) - buried Daleville cem - cd paralysis

KLEPER, Kelsie C - b 4 Jan 1914 Bot Co - d 27 Apr 1917 - f William KLEPER (b Tn) - m Kennely (ALVIS) (b Tn) - buried Daleville Cem - cd measles & broncho pneumonia

KLINE see CLINE, Jacob COFFMAN

KLINE, Mary - b 26 Nov 1851 All Co - d 6 Jan 1916 - f George W LEMON (b Va) - m Dianna (KESLER) - buried Clifton Forge Cem - cd lagrippe

KNIGHT, Catherine - d by 14 Mar 1783 (son called an orphan) - son John

KNISLEY see NICELY, Peter CIRCLE, Eliza LINKENHOKER

KNODE see Henry DOLLMAN, KANODE

KNODE, George W - b ca 1834 Va (census #676) - d by 13 Nov 1865 - f Michael
KNODE - m Mary - adm Lewis LINKENHOKER

KNODE, Michael - b ca 1796 Md (census #676) - d by 9 Mar 1863 - h/o Mary -
Adm Lewis LINKENHOKER

KNOX see William REED

KOGER see Godfrey HAMILTON

KOHEN, Jacob - b ca 1850 Europe - d 5 Feb 1916 - f Tishel KOHEN (b Europe) -
m Rica (b Europe) - buried Charlottesville Cem - cd heart failure

KOLBE, Robert - d by 12 Mar 1861 - Ex Mary M Kolbe

KOLLOCK, Maria - b ca 1777 - d 7 Aug 1814 - age 37y - w/o Dr L KOLLOCK (of
Savannah, Ga.) - Ref Fincastle Presby gravestone

KOONTZ, Eliza Irvine - b ca 1855 Bot Co - d 9 Nov 1856 - f George KOONTZ -
m Ann - cd unkn - rep by father

KURFMAN see COFFMAN, George RONK

KYGER see Sarah Jane Wood

KYLE see William ANDERSON, James McDonald GODWIN, Matthew HARVEY, Sarah ROW-
LAND, Janette Howard TREEVEY, Jane WOMACK, Edward McDONALD, John POAGUE,
Robert L RUDISILL, James W WOMACK

KYLE, Archibald - d by 10 Mar 1784 - Ref WB A p198, will dated 2 May 1778,
Admr bond - wife Mary; Ch Sally, Rhoda, Fanny, Marvin, - on 10 Mar 1784,
orphan Marvin, bound out - Admr David MAY, Thomas MILLER

KYLE, Barclay - d by 12 Oct 1829 (dau called orphans) - daus Sarah (over 14),
Mary, Charlotte, Caroline, maybe Nancy (over 14 on 10 Nov 1835)

KYLE, Charles Andrew - b 7 May 1870 - d 6 Aug 1897 - grave Amsterdam Cem

KYLE, Christopher - d 1866 - Admr 8 Oct 1866 Joseph KYLE

KYLE, Edwin - b 15 Jan 1830 Bot Co - d 19 Sep 1912 - f Robert KYLE (b Bot
Co) - m Jane (PECK) (b Bot Co) [dau of John] - buried Mt Pleasant Cem - cd
Senile debility

KYLE, Harriet J - b ca 1845 Bot Co - d 16 Mar 1856 - f Francis J McDOWELL -
m Sarah - cd pneumonia - rep by father

KYLE, Jane - d by Nov 1824 - Ref WB C p574, will dated 17 Oct 1824 - Ch
Christopher, Jane (md ___ Pitzer); Robert, Dinguid, Elizabeth, Polly, Patsy,
Margaret

KYLE, Jane - b ca 1790 (census #1598) - d by 12 Aug 1850 - Admr William KYLE

KYLE, John E - b ca Feb 1868 Bot Co - d 12 Aug 1868 - age 5m 14d - f John C KYLE - m Sallie C - cd not known - rep by father

KYLE, Joseph - d by 26 Jan 1808 - Ref WB B p166, will dated 26 Aug 1806 - wife Jane; Ch Robert, Duiguid, William, Christopher, Anne & married daus, not named - Ex^{TS} Robert KYLE, Duiguid KYLE

KYLE, Margaret - d 1867 - Adm 8 July 1867 Sheriff Lewis LINKENHOKER

KYLE, Mary - d by (Sep 1784, marked out) 15 Nov 1783 - Ref WB A p213 settlement

KYLE, Nancy - d by 16 Sep 1811 - Ref WB B p271, appraisal & sale - Admrs Robert KYLE, Dinguid KYLE

KYLE, Robert - b ca 1779 [or 1790] Bot Co (census #1418) - d 27 June 1861 - age 82y - cd age - rep by son Edward KYLE - h/o Jane (PECK) KYLE [d/o John] - Adm John G RUDISILL (14 Oct 1861)

KYLE, Rufus P - b ca 1837 Va (census #732) - d by 9 Feb 1863 - f Washington KYLE - m Mary J - Adm Lewis HOUSEMAN

KYLE, Washington - b ca Oct 1809 [or 1811] Bot Co (census #732) - d 4 July 1859 - age 49y 9m - f Robert KYLE - cd consumption - rep by wife Mary Jane KYLE - Ex Jane & Rufus P KYLE (8 Aug 1859)

KYLE, William - d by Feb 1821 - Ref WB C p307, will dated 26 Nov 1820 - wife Sarah; Ch Jane (md ___ WOMACK), Barclay, Sally (md ___ Rowland), James; s-i-1^S John DICKERSON, Charles BEALE; gs^S James PITZER (b Oct 1805), Robert PTIZER (b 3 Dec 1807), both s^S/o George PITZER - Ex Barclay KYLE

KYLE, William - b ca 1782 Ireland - d 25 June 1832 Fincastle - age 50y - Ref Va Gen Soc Quar, Vol 4 p14 from "Christian Sentinel" of 16 July 1832 - bro Robert, where he died - Ref #2 Fincastle Presby gravestone

KYLE, William Jr - d by Dec 1909 - f Joseph KYLE, dec'd - m Jane - Ref WB B p224, will dated 12 Aug 1809 - bros Christopher, Robert, Dinguid; sis Ann KYLE

LACKEY, James - d by Oct 1823 - Ref WB C p400, will dated 28 Oct 1822 - wife Mary; Ch Thomas, Nathan, Martha (md ___ McKNIGHT); Agnes (md ___ McKNIGHT), Mary, Samuel

LACKLAND, John S - b ca 1800 Va (census #1691) - d by 14 May 1860 - m Martha - Ex William M LOCKLAND

LACKEY, John M (single) - d July 1849 - age 19y - cd fever - Ref 1850 Bot Co Mort Schedule

LACKEY, Mary Jane - b ca 1834 Bot Co (census #637) - d 23 June 1854 - f Nathan LACKEY - m Jane - cd consumption - rep by b-i-1 John THOMPSON - Adm John THOMPSON

LACKLAND see Damaris VANMETER

LACKLAND, Annie Lou - b 19 Aug 1873 - d 6 June 1892 - f L[uther] C LACKLAND
- V E - grave Mill Creek Cem

LACKLAND, Joel - b ca 1798 Bot Co (census #1692) - d 2 Aug 1854 - rep by
wife Martha A LACKLAND - Adm William M LACKLAND (14 Aug 1854)

LACKLAND, Luther C - b 9 Mar 1851 Bot Co - d 17 Feb 1913 - f Joel Butt LACK-
LAND (b Bot Co) - m Martha Ann (EUBANK) (b Amh Co) - buried Mill Creek Cem -
cd Lesion of small vein in brain

LACKLAND, Martha - b ca 1762 Md (census #1691) - d by 8 Dec 1851 - Ex William
M LACKLAND

LACKS see William R WORLEY

LACKS, Benjamin - d 1869 - Adm bond 9 Aug 1869 Sheriff JOHNSON

LACKS, Homer - b 23 June 1912 Bot Co - d 2 Mar 1914 - f Emmit W LACKS (b Bot
Co) - m Hattie Elizabeth (CAMPBELL) (b Bed Co) - buried family cem - cd
pneumonia

LACKS, Mariah (widow has been marked out) - b ca 1837 - d 21 June 1857 - f
Benjamin LACKS

LACKS, William (unmd) - b ca 1839 - d 2 Mar 1857 - f Benjamin LACKS - cd
fever - rep by father

LAFON see Lewis W DOLLMAN

LAIRD, ____ - d by 12 Apr 1785 (son called an orphan) - son Charles

LAKE see Daniel WERNER

LAKE, Israel - d by 23 Sep 1809 - Ref WB B p223, appraisal - On 13 Mar 1810
orphan Francis (over 14)

LAKE, Timothy - b 17 May 1785 - d 10 Oct 1869 - age 83y 4m 23d - grave Mill
Creek Cem

LAM(B), Elijah (widower) - b ca 1836 Rb Co - d 29 June 1862 Richmond, Va -
age 26y - f M LAM - m S - cd fever - rep by father - adm James W SMITH

LAM, Madison - b ca 1842 Rb Co - d 30 Aug 1862, Army - age 20y - f M LAM -
m S - cd killed - rep by father

LAM, Sidney B - b ca Nov 1867 Bot Co - d 4 Dec 1867 - age 14d - f Isaac LAM
- m M A - cd bold hives - rep by father

LAMB see LAM, Samuel AMYX, John Howel DUVALL, Wilmer David JONES

LAMB, Elizabeth - b Mar 1827 Va - d 8 Jan 1913 - f George LOTTS (b don't
know) - m Elizabeth (LOTTS) (b Rb Co) - buried Zions Hill Cem - cd LaGrippe

LANCE see Sarah A BOWERS

LANDERS see Jacob COFFMAN, Elizabeth RICHARDSON

LANDERS, Bernice Vistine - b 20 Oct 1902 Bot Co - d 19 Nov 1914 - f D P
LANDERS (b Bot Co - m Jennie (KESSLER) (b Bot Co) - buried Troutville Cem -
cd diptheria

LANDERS, Francis (male) (widower) - b ca 1793 Louisa Co, Va - d 7 Oct 1868 -
ag 75y - cd bold hives - rep by ? , Elizabeth F RICHARDSON

LANDERS, George W - b ca 1843 Bot Co - d 18 Sep 1862 Richmond, Va - age 19y
- f Thomas LANDERS - m Mary - cd typhoid fever - rep by father

LANDERS, James E - b ca 1847 Bot Co - d 1 Oct 1868 - age 20y 11m 17d - m M J
LANDERS - cd consumption - rep by mother M J LANDERS

LANDERS, Mary Jane - b ca 1814 Charlotte Co, Va - d 24 Feb 1870 Amsterdam twsp
- age 55y 9m 7d - f John SUMPTER - m Hannah - cd consumption - rep by hus
Jacob LANDERS

LANDERS, Polly - b ca 1802 New Kent Co, Va - d 30 Mar 1866 - age 64y - cd
sudden - rep by hus Thomas LANDERS

LANDERS, Tazwell - b ca 1835 Bot Co - d 16 Aug 1862 Richmond, Va - age 27y -
f Thomas LANDERS - Mary - cd unkn - rep by father

LANDERS, Thomas - d 1868 - Adm bond 12 Oct 1868 Peter LANDERS

LANDON, Martha - b ca 1833 Bot Co - d 23 Feb 1853 - f Alvin LANDON - m Eliz-
abeth - cd consumption

LANDON, Mary V - b 12 Dec 1834 - d 1 Dec 1894 - w/o J M LANDON - grave Fin-
castle Presby Cem

LANE see LAYNE, Michael CLOYD, Glenna Frances WILLS

LANG, Thomas - d by 10 Oct 1809 (ch called orphans) - ch Hannah Matilda,
Mary, Alfred, all named in suit

LANGE, Christian Charles - d by Aug 1814 - Ref WB C p95, will date 7 Sep
1813, codicil 25 Sep 1813 - wife Elizabeth, wife's sis Christina SCHLENGLISS,
others: Peter BUSH, George RULE - Ex Charles BEALE

LANGHORNE see Joseph W BATES

LANGHORNE, Henry S - b ca 1798 Warwick Co, Va - d 16 Dec 1854 - cd cancer -
rep by bro William LANGHORNE - h/o Ann LANGHORNE

LANGHORNE, William - b ca Nov 1783 Cumberland Co, Va (census #1617) - d 18
Mar 1858 - cd unkn - rep by wife Catherine LANGHORNE - Ex Catherine LANGHORNE,
Geo P TAYLOR & Frederick JOHNSON

LANKFORD, Thomas H - b 17 Nov 1856 Aug Co - d 14 Mar 1916 - f William C LANK-
FORD (b Aug Co) - m Mary (?BALINE) (b Aug Co) - buried Fairview Cem - cd
died suddenly

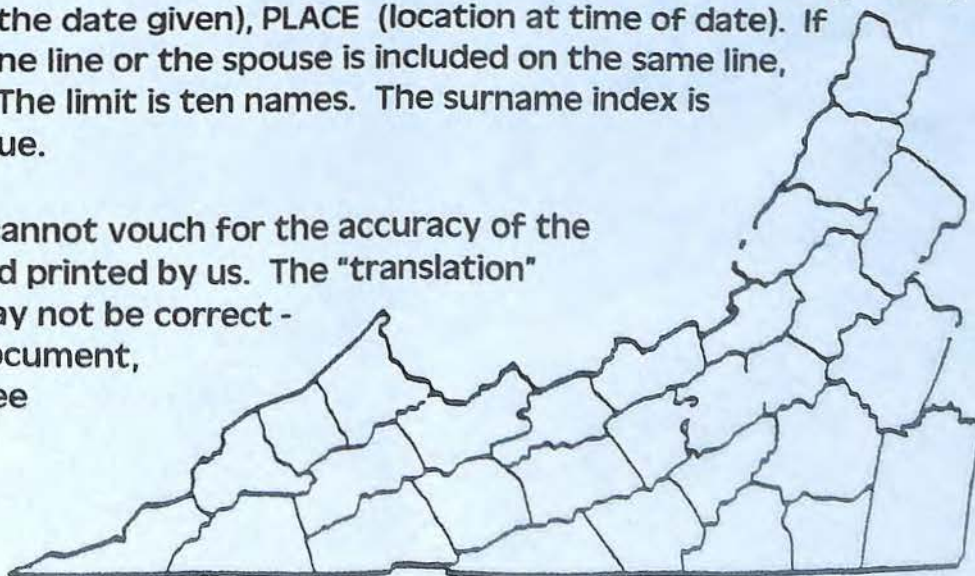
GENEALOGICAL QUERIES: Each member is entitled to one (1) to three (3) free 60 word query (does not include your name, address and e-mail address) per issue as space permits. Please make your query as clear and specific as possible so that others can understand and have a chance to help you. The queries will be printed exactly as submitted. Each query should include names, dates, and location to identify the person or persons you are researching. Please CAPITALIZE all surnames including maiden and married names. Do not abbreviate, we will do so if necessary. If handwritten queries are submitted, please print legibly. Queries for non-members are 5 cents per word, not including your name, address and e-mail address. Queries must be received prior to the 1st of the month preceding publication.

FAMILY REUNION, PUBLICATION OF BOOK, NEWSLETTERS, ETC.: Limited to 60 words, not including your name, address and e-mail address or website. Send the 60 word notice as you want it printed. These notices will be printed as space permits. Members will be given priority in publishing these notices.

MATERIAL FOR PUBLICATION: We welcome articles, records, etc. for publication. The material may not be used in the issue following the date of submission but in a future issue. If a large amount of material is sent , it may take some time to publish because we try to have a variety of material in each issue. (1) **READY FOR PUBLICATION** (which the editor loves). Use 8 ½ X 11 paper, with a minimum margin on all sides of 1 inch. Center your title. Be sure to include your name, address and e-mail address. PLEASE read material carefully before submitting, double-check dates and use "spell checker". If you wish to save the cost of postage, articles for publication may be e-mailed to the editor or The Virginia Room. Photos to be included with your submission may also be e-mailed, most formats can be accommodated. (2) **GIVE SOURCE OF MATERIAL.** Original documents - where found, type of record, page number, etc. or, if known, who (or what facility) now has the document in their possession. We CANNOT print material from printed sources unless we have written permission from the publisher, which you must furnish. We must have the source of materials to give credit to the person who has done the work. (3) **DEADLINE** for submitting material should be at least two months before date of publication. (4) **MATERIAL WILL NOT BE RETURNED.**

SURNAME INDEX: Information will include NAME (given and surname), DATE (birth, death, marriage or where living at the date given), PLACE (location at time of date). If this data takes more than one line or the spouse is included on the same line, it will count as two names. The limit is ten names. The surname index is published in the Summer Issue.

Virginia Appalachian Notes cannot vouch for the accuracy of the material submitted to us and printed by us. The "translation" of the original document may not be correct - get a copy of the original document, if possible, to see if you agree with the printed version.



SPRING 2008

Southwestern Virginia Genealogical Soc., Inc.
P.O. Box 12485
Roanoke, VA 24026

Address Service Requested

NON/PROFIT ORG.
U.S. POSTAGE
PAID
PERMIT NO 374
ROANOKE, VA

1038
Roanoke Public Library Foundation
706 S Jefferson St
Roanoke VA 24016-5104

