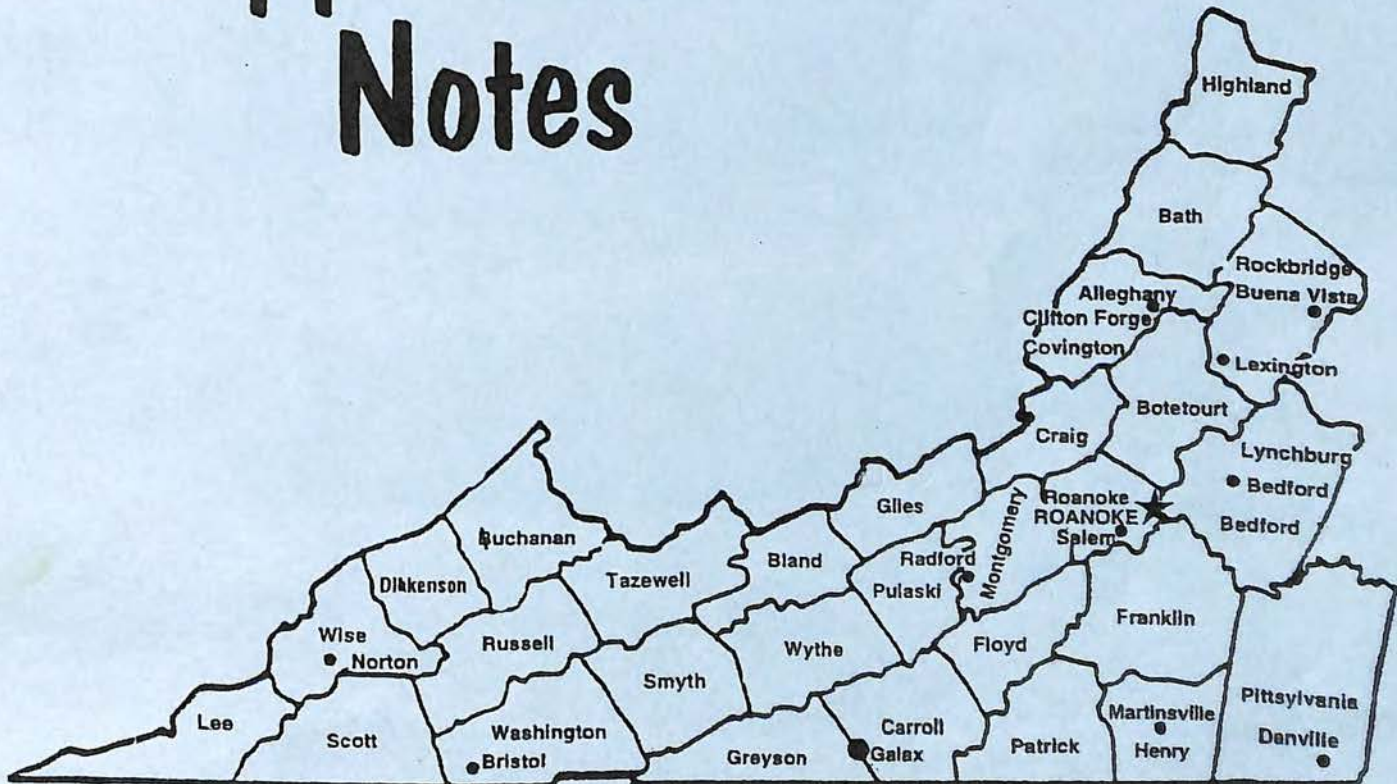


SPRING 2009



Roanoke City Public Library
Virginia Room

Virginia Appalachian Notes



EXCHANGE QUARTERLIES
SOUTHWESTERN VIRGINIA GENEALOGICAL SOCIETY

Southwestern Virginia Genealogical Society
Roanoke, Virginia



Roanoke City Public Library
Virginia Room

SOUTHWESTERN VIRGINIA GENEALOGICAL SOCIETY INC
Calendar Year 2009

Officers and Executive Board		Area Code 540	email address
President	Karen Kappesser	977-0067	gkkapp@infionline.net
Vice-President	Pamela B. Young	342-2367	pmyoung001@aol.com
Record Secretary	Vacant		
Corresponding Secretary	Vacant		
Treasurer	Don Vaughan	989-8645	DONSVGS@aol.com
Membership	Jim Nelson	725-5303	jasnelson@cox.net
VAN Editor	Michael Blankenship	989-1469	mblankens@yahoo.com
Immediate Past President	Pamela B. Young	342-2367	pmyoung001@aol.com
VAN Editor Emeritus	Babe Fowler	563-1733	fowlervw@cox.net

Committees

Computer/Labeler	Don Vaughan	989-8645	DONSVGS@aol.com
Program	Pamela B. Young	342-2367	pmyoung001@aol.com
Historian	Babe Fowler	563-1733	fowlervw@cox.net
VAN	Michael Blankenship	989-1469	mblankens@yahoo.com
Exchange Quarterlies	Virginia Room Staff		
Publicity	Pamela B. Young	342-2367	pmyoung001@aol.com
Book Reviews	As Signed		

The **SOUTHWESTERN VIRGINIA GENEALOGICAL SOCIETY, INC.** is a tax-exempt corporation under section 501(c)(3) of the Federal Income Tax Code. Section 170 of the Tax Code provides for the treatment of contributions to the SVGS as a deductible contribution by the donor. Bequests, legacies, devises, transfers, or gifts to the SVGS may be deductible for Federal estate gift tax purposes, if they meet the applicable provisions of sections 2055, 23106, and 2522 of the Tax Code.

MEMBERSHIP: Each SVGS member will be mailed a copy of the "Society's" quarterly, the VIRGINIA APPALACHIAN NOTES (VAN). The VAN is usually published quarterly. The annual index will be included in the Fall issue of the VAN for that year. Society memberships are on a calendar year basis and those memberships, which are not renewed by January 30, will be deemed as inactive and removed from the VAN mailing list. Single or family memberships are \$20.00; Organization and Library memberships are \$15.00. Members with mailing addresses outside the United States shall add \$10.00 to the above fees and all monies are payable in U. S. currency. All payments should be made by check or money order, payable to: **Southwestern Virginia Genealogical Society, Inc. or to SVGS, Inc.** and mailed to: **SVGS, ATT: Membership, Post Office Box 12485, Roanoke, VA 24026-2485.**

BACK ISSUES of the VAN: 1995 and earlier, are available at a reimbursement cost of \$4.00 each, as long as the supply lasts. More recent issues are \$6.00 each. These prices include postage. Mailed to Virginia addresses please add 4.5% sales tax. A bulk mailing of old VANs to one address may be eligible for a discount. All payments should be made by check or money order, payable to **SVGS** and mailed to: **SVGS, ATT: Jim Nelson, Post Office Box 12485, Roanoke, VA 24026-2485.**

BOOKS for REVIEW: Books submitted to the Society will be reviewed and the review printed in a subsequent issue of the VAN. When submitting a book, please include the price of the book, copies of the available advertising material, and information as to where orders for additional copies may be placed. Following their review, all books will be placed in the Virginia Room of the Roanoke City Library, Roanoke, Virginia.

VIRGINIA APPLACHIAN NOTES

Published Quarterly

By

SOUTHWESTERN VIRGINIA
GENEALOGICAL SOCIETY, INC.



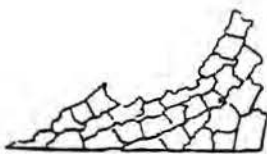
Vol. 33 - No. 2 - Spring 2009
(April, May, June)

CONTENTS

	Page
New Books in the Virginia Room compiled by Pamela Young	51
Summer Workshops at the Roanoke Public Library - Alicia R. Sell	55
National Genealogical Society Convention reported by Pamela Young	57
Marshall Family Records submitted by Edward D. Graham	58
Rev. Peter Vest Marriage Records submitted by Judy Blackwell	63
John Meador Deed Records compiled by Mary A. Barnes	71
African American Ancestry - Mt. Pleasant Heritage Museum	72
Social Security Number Allocations submitted by Babe Fowler	75
Land Records - U. S. Dept. Of the Interior	76
Traditional Genealogy Search Methods Are Often Needed For Virginia Records by Arlene Eakle	78
Oral History Questions submitted by Babe Fowler	80
Tips for Planning a Successful Family Reunion submitted by Babe Fowler	82
Botetourt County Death Records by Charles T. Burton - continued	83

Submissions for future issues are always welcome.
If you would like to contribute an article on-line please e-mail it to:
mblankens@yahoo.com.

The content of the VAN is supplied by its membership.



Southwestern Virginia Genealogical Society, Inc.

P. O. Box 12485
Roanoke, Virginia 24026

Dear Fellow Members,

Time just seems to fly by!!! In my last letter I mentioned that we were off on a Mediterranean cruise in March. We were gone about two weeks and had a wonderful time...the trip of a lifetime!! We stopped in Italy, in Greece we climbed the Acropolis to see the Parthenon, walked in St. Paul's footsteps at Ephesus, saw the Pyramids in Egypt and spent the day on the jewel of the Mediterranean, Malta. While I have no ancestral ties to these places I could imagine how excited I would be if I did. I felt that excitement when I first visited England and saw where my ancestors lived and worked. If you can visit some of your ancestral "homeplaces" I highly recommend it.

My husband had a new development with his family history research recently. I was looking at the KAPPESSER message board on Rootsweb.com, something I had not done in a long time. Someone asked for information on Peter KAPPESSER, winner of the Medal of Honor in the Civil War and my husband's great uncle. A reply was posted by Peter's great-grandson. Since he blocked his email address, the best we could do was post a response. We figured he might not look at the board for sometime so we searched Switchboard (switchboard.com) for an address and phone number for him. Sure enough we found him. Gary called him but got voice mail. He left a message and waited. Several days later he received a call. He now has a new "cousin" and the answer to a burning question, what happened to Peter's Medal of Honor? The cousin has it framed and hanging on his wall. The moral of the story is: check the surname boards at various genealogy websites often and, if you can't respond with an email, find the phone number and give the person a call.

Happy Hunting,

Karen Kappesser, President
514 Scalybark Drive
Blue Ridge VA 24064-1328
Telephone: (540) 977-0067
E-mail: gkkapp@infionline.net

New Books in the Virginia Room

All books can be viewed in the Virginia Room of the Roanoke Public Library during normal library hours.

920.0429 R544e **Eminent Welshmen: a short Biographical Dictionary** by T. R. Roberts 1995
Clearfield

929.3097 B675e **Eastern Cherokee by Blood 1906 -1910** 3 volumes 21,881 – 34,185
Transcribed by Jeff Bowen 2008 Clearfield

929.3755 N812w **Abstracts of the Willis & Estate Administration of Northampton County, VA 1800-1854** compiled by Dr. David R. Scott 2008 Picton Press

929.2 C846g **Get your Foot off the Running-Board, Parley! Crane, Craine, Crain** a collection of Crain Family Stories & Recipes by Carolina J. Crain 2003

973.7468 M229h **History of the Twentieth Tennessee Regiment** by W. J. McMurray 1976
Elder's Bookstore

811.6 L588v **The Virginiad 400 Years of Virginia History in Poetry** by Tim Lewis 2008

929.374402 D299g **Genealogical Register of Plymouth Families** by William T. Davis 2006
Genealogical Publishing

929.374402 R555m **Mayflower Source Records from the New England Historical and Genealogical Register** 2007

923.173 J359 H327r **The Road to Monticello The Life and Mind of Thomas Jefferson** by Kevin Hayes 2008 Oxford University Press

929.2 L722 Sh77c **Capt. Daniel Little and his Contemporaries 1753 – 1789** by Pauline M. Shook 1994

975.431 J132 **Jackson County West Virginia Past & Present** by Jackson County Historical Society 2006 Walsworth Publishing

P 973.36 L23b **Battle of Camden, South Carolina 16 Aug 1780** by Liet. Col. H. L. Landers, Historical Section Army War College 1997 Kershaw County Historical Society

P 929.2 Od5 D718g **Genealogy of Donnell Langford & other families** by Charles E. Donnell 1949

P929.2 W771 F496w **Witcher Family Cemetery Established 1848 In Commemoration of 150 years 1833 -1983** Published by the Family
(This is a great little book – complete with pictures, obits and family stories- PBY)

P 929.2 W93 G767i **Identifying the Wrights in the Goochland County, VA Tithe Lists 1732 – 1784** by Robert N. Grant 2000 Heritage Books

929.2 F456 L119j **James Fields Papers, 1781 -1874 Bedford County , VA** Edited by Carole Field Lacy 2008 Carole Field Lacy Publications

929.3755 F873bc **Birth Records Fredericksburg, MD 1900 – 1940 (A – Z Colored) Transcript**
Prepared by Robert A. Hodge 1988 (gives info on parents, wonderful resource – PBY)

973.444 H36 **Historical Register and Dictionary of the United States Army 1789- 1903**
2 volumes, by Francis B. Heitman 1965 Government Printing Office

973.27 B159p **Pamphlets of the American Revolution Volume 1 1750-1765** Edited by Bernard
Bailyn 1965 Belknap Press

973.303 B63e **Encyclopedia of the American Revolution** by Mark Mayo Boatner III
1969 David McKay Co.

973.313 F322g **Greatness to Spare, The Heroic sacrifices of the men who signed the
Declaration of Independence** by T. R. Fehrenbach 1968 Van Nostrand Co.

973.3441 F531s **Soldiers, Sailors & Patriots of the Revolutionary War Maine** Compiled by
Carleton Fisher & Sue Fisher 1982 National Society of the Sons of the Revolution

929.3755 W268r **Warwick County, VA Colonial Court Records in Transcription** Edited by
Richard Dunn 2008 Clearfield

973.75 H671d **Damn the Torpedoes! Naval Incidents of the Civil War** by A. A. Hoehling
1989

283.75543 Sa24vb **The Vestry Book of St Peter's Parish 1682 – 1758 New Kent County, VA**
National Society of Colonial Dames 2006

929.3097 B675ec **Eastern Cherokee Census Cherokee, NC 1923 – 1929 Volume 1** Taken by
Agent James E. Henderson, Transcribed by Jeff Bowen 2007 Genealogical Publishing

929.3756 G223d **Deeds of Gates County, NC 1803 -1808 (Volume 2) & 1808 – 1819 (Volume
3)** compiled by Mona Armstrong Taylor 2007 Southern Historical Press

975.57 M662 **Miner's Lamps and Cold Mountain Winters, Tales from the Good Old Days in
Southwest Virginia** by Old-timers in Southwest Virginia Compiled by Bob Lasley & Sallie Holt
2008 Hometown Memories Publisher

267.13 F416g **The Gideon Ministry in Virginia 1905 – 1993** compiled by John Ferrell, Virginia
Beach

922.86 C836 N388s **"So Beloved Cousins", The life & Times of Solon B. Cousins, Jr.** by
Joseph Nettles 1983 Mercer University Press

929.2 L758h **A History of the Livesays Volumes 1 & 2** by James J. Livesay & The Livesay
Historical Society 2003

929.2 W93 G767amx **Wright Family Personal Property Tax Lists 1782 – 1850 Amherst
County VA** by Robert N. Grant 2008 Heritage Books

929.2 W93G767amb Wright Family Birth Records 1853 – 1896; Marriage Records 1761 – 1900; Census Records 1810 -1900 in Amherst County, VA by Robert N. Grant 2008 Heritage Books

929.2 W93 G767amL Wright Family Land Tax Records 1782 – 1850 Amherst County, VA by Robert N. Grant 2008 Heritage Books

929.2 93 G767drc Wright Family Death Records 1853 – 1920, Cemetery Records by Cemetery & Probate Records 1782 – 1900 Campbell County, VA by Robert N. Grant 2005 Heritage Books

929.2 W93G767ped Wright Family Records, Prince Edward County, VA Birth, Marriage, Election Polls, Tithes, Personal Property Tax & Census Records. By Robert N. Grant 2006 Heritage Books

917.557 T257s Southwest Virginia Crossroads, An Almanac of Place Names & Places to see by Joe Tennis 2004

975.445 F336m Memories & Photos of Mullins, West Virginia Volume 1 – 1894 to 1925 & Volume 2 – 1926-1931 Volume 3 – 1932 -1936 by John W. "Jack" Feller 1993 & 1997 Harless Printing

373.75597 W67 The Colonial, William Fleming yearbook 1940

929.3097 J764c Cherokee by Blood, Records of the Eastern Cherokee Ancestry in the U.S. Court of Claims 1906 – 1910 Volumes 3 – 9 by Jerry Wright Jordan 2006 -2007 Heritage Books

973.D988c A Compendium of the War of the Rebellion, Volumes 1 – 3 by Frederick H. Dyer 1959 Thomas Yoseloff Publisher

917.504 Sch91t Travels in the Old South, Selected from Periodicals of the Times Volume 1 1783 – 1835, Volume 2 1836 – 1860 Edited by Eugene L Schwaab & Jacqueline Bull 1973 University of Kentucky Press

611.018 F582d DNA & Genealogy by Colleen Fitzpatrick & Andrew Yeiser 2005 Rice Book Press

929.2 EL58 Si47e Elliott Family History, Allied Lines: Bell, Trolinger, Heavener, Rhodes, Addison, Cockrum & Meler by Loretta Elliott Simmons 2008 (History of Curtis Elliott born 1764 of Montgomery, VA and his descendants * PBY)

975.471 F294h History of Fayette County West Virginia Fayette County Chamber of Commerce 1993

929.2 W884C237p Pioneers, Patriots and Planters, First Settlers in Virginia , Kentucky, North Carolina, South Carolina, Tennessee & Georgia by Elizabeth Carrow Woolfolk 2004 Wynnton Publishing

929.375202 H728i Index to Marriages in the (Baltimore) Sun 1851 – 1860 Compiled by Thomas L. Hollowak 2007 Genealogical Publishing

917.5304 H629.h **Historic American Buildings Survey, National Parks Service, Department of Interior, District of Columbia Catalog 1974** Compiled by Nancy B. Schwartz, Virginia University Press

975.5 En19v **The Encyclopedia of Virginia** 1992 Somerset Publishers

P 283.755 B84e **The Established Church in Virginia & The Revolution** by Rev G. Maclaren Brydon, Historiographer of the Diocese of Virginia 1930 Richmond Press

929.543 Sm53n **German- American Genealogy Research Monograph # 8, Nineteenth – Century Emigration from Kreis Simmern (Hunsbrueck), Rheinland-Pfalz, Germany, To Brazil, England, Russian Poland, and the United States of America.** By Clifford Neal Smith 2004 Genealogical Publishing

282.755791 Stla **St. Andrew's Catholic Church, Roanoke, VA. Membership Directory 1995**

P 975.5B38s **Story of Virginia an American Experience** by Sara B Bearss 1995 Virginia Historical Society

P 975.2 Si39p **The Provisional Government of Maryland (1774-1777) 13th series** by John Archer Silver, John Hopkins University Studies in Historical & Political Science 1973

P 917.55791 IL6r **Illustrated Review, The city of Roanoke, Metropolis of Southwest VA with Historical points of interest** 1931 by C. E. Weaver & Parker Studios

SC 975.5 R54c **The Changing South** by Wm J. Robertson 1927 Boni & Liveright

973.7 L85c **The Civil War Day by Day an Almanac 1861 -1865** by E. B. Long 1971 Doubleday

973.311 B73r **The Tea Leaves of 1773, Illustrated, Being a Collection of Letters & Documents Relating to the Shipment of Tea to the American Colonies in the year 1773, by the East India Tea Company** by Frances S Drake 1970 Singing Tree Press

553.78 G292w **Surface Water Records of Virginia 1961-1964** by the Department of the Interior Geological Survey

553.78 V819ch **Surface Water Supply of VA Chowan & Roanoke River .. Bulletin 6 (1927 - 1942) 17 (1942-1950) 18 (1951 -1955) & 26 (1956-1960)** by Commonwealth of VA Department of Conservation & Economic Development, Division of Water Resources

551.57 St48 **Virginia Geological Survey Surface Water Supply of Virginia** by G. C. Stevens 1916 University of VA

551.49 V81r **Water Resources of Virginia Report to the Virginia Legislative Council to the Governor & General Assembly of Virginia** 1955 Commonwealth of Virginia

Summer Workshops at the Roanoke Public Library

Creating a Digital Memory Scrapbook

A three part workshop, take advantage of this opportunity to pass down family memories by creating a Digital Memory Scrapbook by using family photographs and digital sound recordings. We provide the equipment - you provide the memories! At the end of the workshop you will have a CD copy of your Digital Memory project. A fun project for the whole family!

Dates:

Monday July 27: Recording Family Memories: A Beginner's course for Recording Oral Histories

Computer Lab, Main Library

5:30 pm - 7:00 pm

Take a crash course in how to collect spoken memories. You will learn how to:

Establish project goal of what information you want to collect about your family

Create questions to ask family members

Use digital recording equipment

Transcribe your interviews

Homework: Interview family members, write up short transcripts from your stories, pick out photographs you would like to include in your scrapbook.

Mondays August 17 & 24: Compiling Your Digital Memory Scrapbook

Computer Lab, Main Library

5:30 pm - 7:30 pm

Now that you have done your interviews, we will start to compile your Digital Memory Scrapbook. You will learn how to:

Scan your photographs

Choose sound clips to use for your scrapbook

Create a Digital Memory Scrapbook presentation

Thursday August 27: Family Memories Reception (A Public Showing of your Digital Memory Scrapbook. Refreshments provided).

Mezzanine, Main Library

5:30 pm - 7:00 pm

A special presentation where you can show off all of your hard work! All of the participants will have the opportunity to give a public showing of their scrapbooks followed by a reception. Every participant will receive a cd copy of their presentation so that they can preserve it for future generations!

Alicia R. Sell, Archivist
Roanoke Public Libraries
Virginia Room
706 South Jefferson St.
Roanoke, VA 24016
540-853-5868

GENEALOGICAL QUERIES

Wish to correspond with persons interested in the THOMPSON family of Montgomery, Carroll and Grayson, Virginia Counties in the late 1700s-1800s. What is the relation of Elder Nathaniel THOMPSON to Andrew THOMPSON and James THOMPSON Jr. and Sr.? Who were their wives? Children?

Marilynn Dickerson
740 N. Wagner Rd.
Ann Arbor, MI 47103

Seeking information on Edward SMITH, Irish conscript, deserted British in Revolutionary War, became a patriot and married Milard or Mildred BIRD (BYRD). May have lived in Grayson Co., VA. Children: Sally SILVERS (born VA), James, Edward, Hiram, Jane (m. Temple HAYNES), Milard (m. Stephen HALE), William and Jessee. Pulaski, KY in 1800, died Hamilton Co., OH ca. 1823. Children to Indiana. Will share.

Marilynn Dickerson
740 N. Wagner Rd.
Ann Arbor, MI 47103

National Genealogical Society Convention May 2009 Raleigh NC

What a great convention! If you haven't had the opportunity to go to the National Convention, I encourage you to go next time it's in your area. Next year it's in Salt Lake City, Utah. Just going to the exhibitor's hall is awesome, plus it's free! This year many great classes were offered.

I was able to go to a couple of classes – “Solutions for Missing or Scarce Records” – Thomas W. Jones, PhD, CG, CGL, FASG & co-editor of NGSQ. This class dealt with overcoming barriers in your research caused by lost or destroyed records.

The wealth of knowledge at the convention is intoxicating. “ABC's of NARA”, conducted by several National Archives staff, dealt with finding aids for the vast holdings at the National Archives & Records Administration including its regional & affiliate archives.

It was hard choosing which classes to attend – wish I could have stayed for the whole week.

Like most of the NGS conventions one of the nice things is the free extra activities offered. They had a “Society Night” where most all the genealogy societies in NC had info tables set up. There were free lectures on: Melungeons, Irish Emigration, How our Ancestors Moved over the Land in Olden Times, Genealogy 2.0 Using Digital Tools to Trace your North Carolina Roots, The Journey of the Ancestry Record and African – American genealogy forum at the North Carolina Museum of History.

There were also extra activities that were not free but sounded fun – Research Trip to UNC Chapel Hill's Wilson Library, Raleigh Trolley Tours, and Orientation Tours & *Segway Tours*. Great activities for non-genealogist & genealogist alike, so a good time can be had by all!

- Pam Young



Marshall Family Records

The family of Norman Eddie Marshall & Laura Cosby Jennings
and their Family Tree. They m 28 Mar 1900 in Carroll County, Virginia
Children:

- 1a Lilly Ada Marshall b 4 Mar 1901 d 8 July 1902
- 1b Cassie Isabell Marshall b 20 Sept 1902 d 10 Dec 1995
 - 1 m _____ 1934 Richard Asa Quesnberry b _____ 1889 d _____ 1931
 - 2 m 23 Nov 1942 John Harry Clowers b 2 Sept 1909 d 27 Nov 1999
- 1c Earl Emmett Marshall b 25 Feb 1904 d 30 Mar 2001
 - 1 m Jan 1934 Fannie Rankin b 7 Oct 1910 d 31 Oct 1979
 - ch Evelyn Jean Marshall
 - 2 m _____ 1980 Mary Nell Walbun
- 1d Velma Jane Marshall b 4 May 1906 d 22 June 1999 m 26 Sept 1928
to Leonard Curtis Hardy b 2 July 1904 d 16 July 1986
ch 1 Curtis Marshall Hardy 2 Clyde Calvin Hardy 3 Alvin Ray Hardy
- 1e Dorsie Mae Marshall b 8 Apr 1908 d 7 Mar 2006 m 18 Dec 1927 to Perry
Eddie Ferguson b 19 Feb 1892 d 22 Jun 1963
ch Junita Maxine Ferguson
- 1f Emma Nancy Marshall b 19 Aug 1910 d 20 Oct 1992 m 21 Jun 1930 to
Denton Lewis Brubaker b 1 Mar 1906 d 15 May 1984
ch 1 David Lewis Brubaker 2 Samuel Norman Brubaker
- 1g Orpah Ruth Marshall b 4 Apr 1912 d 10 Sept 1999 m 15 Nov 1930 to
William Albert Graham b 25 Sept 1903 d 11 August 1992
ch 1 Edward Douglas Graham 2 Kermit Eugene Graham
- 1h Tida Marshall b 9 Mar 1915 m 22 Nov 1939 in Roanoke, Virginia to
Cannie Lee Huff b 3 Mar 1913 d 2 Aug 1992
ch 1 Betty Sue Huff 2 Jackie Lee Huff
3 Bobby Joe Huff 4 Nelson Eddie Huff
- 1i Susie Belva Marshall b 8 Aug 1917 m 1 April 1943 to Arvid
Jerome Berdahl b 23 Feb 1917 d 9 Mar 2000
ch 1 William Earl Berdahl 2 Rebecca Ann Berdahl 3 Jeffery Wayne Berdahl
4 Rebecca Kay Berdahl 5 Kristi Sue Berdahl
- 1j Naomi Rebecca Marshall b 12 Feb 1925 m 14 July 1946 to
Marvin Eugene Davidson b 18 June 1921 d 27 April 2004
ch 1 Stephen Allen Davidson 2 Gary Marvin Davidson

Norman and Laura were born in Carroll County and lived at Panther Creek with his parents Levi and Isabel until around 1920 when they bought a farm in Wythe County about 1 mile south of Patterson on the west side of present Rt 100. Naomi was born in Wythe County while the others were born in Carroll County. After Laura died in 1939, Norman married Suki Campbell of Wythe County.

Notes : m = married d = died Father = 2xN = Is even N
 b = born Date = day/month/year Mother = 2xN+1 = Is odd N

- 2 Norman Eddie Marshall b 21 Apr 1878 in Carroll County Virginia d 4 Oct 1857
 m 28 Mar 1900 in Carroll County Virginia to
- 3 Laura Cosby Jennings b 2 Apr 1880 in Carroll County Virginia d 5 Dec 1939
- 4 Levi S. Marshal b 19 Dec 1847 d 9 Feb 1935 m 16 Nov 1871 to
- 5 Isabel Hylton b 5 Dec 1853 d 11 April 1920
- 6 James M. Jennings b 10 Sept 1849 and d 3 Nov 1936 m 19 Nov 1868 in Carroll
 County Virginia to
- 7 Pheba Jane Goad b 15 April 1850 d 27 Feb 1938
- 8 Thomas Huff Marshall b ____ 1821 d ____ 1887 and m 15 May 1845 in Carroll
 County Virginia to
- 9 Suzannah Bond b ____ 1827
- 10 Elijah Weddle Hylton b 15 Jan 1830 in Floyd County Virginia d 4 Dec 1903
 m 3 Feb 1853 to
- 11 Hannah Bowman b 19 Oct 1830 in Montgomery County Virginia d 24 Feb 1884
- 12 Clifton Jennings b 12 Apr 1809 d 6 June 1890 m 16 June 1831 in Grayson
 County Virginia to
- 13 Catherine Dalton b ____ 1813 d 25 April 1893
- 14 Robert Goad b ____ 1812 in Virginia d about 1872 m 19 Oct 1830 in Grayson
 County Virginia to
- 15 Alley Durnel b ____ 1814 in Virginia
- 16 Simon Granser Marshall b 26 Dec 1791 in Surry County North Carolina m 27 Oct
 1812 in Surry County North Carolina to
- 17 Sarah Reece b ____ 1791 in what is now Yarkin County North Carolina d 1857
- 18 Nathan Bond b 6 June 1786 d 15 June 1871 m 1 June 1808 in Grayson County
 Virginia to
- 19 Nancy Dickens b ____ 1784 d in the 1860's

- 20 Archelous Hylton b 13 April 1779 in Montgomery County Virginia d 10 December 1865 m 24 Nov 1803 in Montgomery County Virginia to
- 21 Catherine Weddle b 7 Mar 1784 in Montgomery County Virginia d 26 Sept 1863
- 22 Christian Bowman b 17 Apr 1791 in Pennsylvania d 24 July 1867 m 19 May 1815 to
- 23 Hannah Reinheart b 25 Jan 1793 in Augusta County Virginia d 23 Jan 1886
- 24 Thomas Jennings b _____ 1778 d 31 Dec 1849 m 16 June 1831 to
- 25 Sarah Clifton b 19 June 1855
- 26 John Dalton b _____ 1772 d about 1850
- 27 Elenor Edwards b _____ 1778
- 28 Aaron Goad b _____ 1784 in Virginia d _____ 1854
- 29 Rachel Dalton b _____ 1778 in Virginia d _____ 1850
- 30 John Durnel b _____ 1782 in Patrick County Virginia d 11 June 1843 m 4 May 1806 in Patrick County Virginia to
- 31 Dinnah Jennings b _____ 1774 d _____ 1829
- 32 Joseph Marshall b _____ 1764 d _____ 1805
- 33 Ruth Hadley b _____ 1770 d _____ 1852
- 34 Abraham Reece b _____ d _____ 1822
- 35 Mary Huff b _____ 1755 d after 1830
- 36 Stephen Bond came to Carroll County Virginia from Yadkin County North Carolina
- 37 Maiden _____
- 40 Elijah Hylton d 1798
- 41 Susannah _____ d 1815 in what is now Floyd County Virginia
- 42 Benjamin Weddle b 21 Sept 1742 - 31 Dec 1742 in Lancaster County Pennsylvania d Apr 1807 buried Bent Mountain
- 43 Annie Marie Eiler d Floyd County Virginia
- 44 John Bowman b _____ 1765 in Lancaster County Pennsylvania d in 1884 in Franklin County Virginia
- 45 Elizabeth Ikenberry b _____ 1767 in Lancaster County Pennsylvania d 26 Oct 1830
- 48 William Jennings b 16 Dec 1750 d 15 Oct 1843 in Carroll County Virginia
- 49 Elizabeth Ogle b _____

- 50 John Clifton lived at Clifton Forge on the James River d in Revolutionary War
51 Penelope Ward
- 52 William Dalton b _____
53 Elizabeth _____
- 54 Issac Edwards b 25 Oct 1747
55 Cathrine _____
- 56 Robert Goad b 1750's d 1836 m in Buncomb County North Carolina to
57 Isabel b _____ d 1845
- 58 William Dalton b _____ 1747 d _____ 1811
59 Elizabeth Sturman b _____ 1755
- 60 James Durnel
61 Pheba Goad
- 62 William Jennings d after 1842 in Carroll County Virginia
63 Elizabeth Ogle
- 64 John Marshall b 1720 d 1787
65 Ruth Hadley b 1726 d 1812
- 66 Simon Hadley b 1737 d 1803
67 Bridget Foote b 1732 d 1807
- 70 Daniel Huff Jr b 1720 d 1791
71 Mary Worley
- 80 James Hylton
81 Susanna Walton d 1760 in Goochland County Virginia
- 84 Elijah Weddle b Germany d 1742 at sea
85 _____
- 96 Jonathan Jennings b about 1721 d about 1780
97 Diannah Bobbitt b about 1721
- 98 Thomas Ogle b 25 July 1721 in Delaware d 1803 in Grayson County Virginia
99 Elizabeth _____
- 112 Abraham Goad d in 1779 in Pittsylvania County Virginia
113 _____

- 126 Thomas Ogle
127 _____
- 128 Jacob Marshall b about 1700-1717
129 Ann Griffith b about 1700-1729
- 130 _____
131 Mary Rowland d about 1733
- 132 Joshua Hadley b 1703 d 1760
133 Patience Brown b 1712 d 1783
- 140 Daniel Huff b 1793
141 Elizabeth Dudley
- 168 Johan Michael Weddle b Germany
169 _____
- 224 Abraham Goad b 1682 in Richmond County Virginia d 1741
225 Katherine Williams d 1741 in Richmond County Virginia
- 250 James Bobbitt d in present Pittsylvania County Virginia in 1761
251 Elizabeth Dalton
- 252 John Ogle b ____ 1679 d ____ 1749
253 Elizabeth _____
- 256 Jacob Marshall
257 Margaret Edwards

Edward D. Graham

REV. PETER VEST MARRIAGE RECORDS

The following was printed in the Floyd Press, February 4, 1960 and is presented here in its entirety.

Marriage Records Kept by the Late Rev. Peter R(ober) Vest

The following was taken from some papers found by Mrs. Lala Vest in old files of Rev. Peter R. Vest. It is not an accurate record as the papers were so depleted that they could scarcely be read and it is not a complete record. It was taken from scrapes of paper and was incomplete but we thought it might interest some to have this published. Rev. Vest was a minister for the Methodist Episcopal Church for 44 years.

Peter R. Vest was converted to God, June 20, 1852; was appointed Class Leader 1866, was licensed to exhort 1871; was licensed to preach 1873; was ordained deacon 1886 by Bishop Andrews.

Rev. Vest was married to Charlotte Shockey, December 7, 1853. His family consisted of the following children: William Madison, Sarah, Callahill, Nancy Ellen, George D, Biar, Lewis Lemon (Jeff), Frances and Noah.

From 1874 to 1888, he had preached 750 sermons. That was the last record he had kept. Below are the marriages we found.

December 28, 1881	G. W. Loving	Julia Akers
February 13, 1882	Horace Whitenack	Aldora Shank
June 12, 1884	Charles Muncy	Dora Maxey
July 02, 1884	George W. Vest	Martha A. Conner
July 31, 1884	William A. Poff	Nannie E. Wimmer
December 3, 1884	Isaac J. Vest	Lucy Ina Conner
December 30, 1884	George R. Muncy	Elizabeth Halley
February 26, 1885	Charles A. Smith	Dora Bell Conner
December 30, 1885	John W. Stuart	China E. Iddings
February 18, 1886	David W. Vest	Admonia Conner

May 19, 1886	Robert L. Janney	Eleanor Graham
February 18, 1886	David W. Vest	Nancy Mills
December 16, 1886	David W. Link	Lucy M. Conner
February 08, 1887	Robert L. Craig	Sarah Gearheart
February 17, 1887	Lindsey L. Boone	Marelda Whitenack
March 03, 1887	Andrew L. Iddings	Laura L. Whitenack
March 20, 1887	Charles H. Rakes	Mary Ann Janney
May 10, 1887	John W. Ward	Molly Keister?
No date	Charles P. Wilson	Margaret McNeil
August 28, 1887	John T. Taylor	Mary E. Wort
December 10, 1887	Joseph P. Martin	Elmetta Lawrence
January 25, 1888	James F. Poff	Minnie Belle McNeil
December 31, 1888	James McNeil	Margaret C. Boone
December 13, 1888	Charles M. Iddings	Agnes M. Nolley
January 03, 1889	Delaware Whitenack	Enora A. Iddings
January 24, 1889	Henry McNeil	Mary Ann Smith
February 14, 1889	Charles E. Sumner	Margaret Ellen Iddings
February 18, 1889	Charles W. St. Clair	Margaret L. King
March 14, 1889	Charles Craighead	Lucy Conner
March 28, 1889	Robert Huff	Sallie J. Houps
April 12, 1889	James B. McNeil	Olie Sisson (Alia E.)
May 10, 1889	Burnett P. Ferrill	Ada Keister
June 10, 1889	Dennis H. Clower	Mellie A. Lawrence
December 11, 1889	Andrew Pierce Vest	Ellen F. Vest
December 11, 1889	Aquilla Lucas	Alice D. Iddings
January 19, 1890	J. B. Board	Cora Conner
April 19, 1890	Benford W. McNeil	Eulla Aldridge
April 19, 1890	Joseph F. V. Conner	Melvina Conner
May 11, 1890	James Sumner	Mollie Dangerfield
June 11, 1890	T. J. Walters	Mary Poff
June 16, 1890	J. R. Craighead	Martha F. Eanes
June 25, 1890	C. O. Conner	Zora M. Conner
November 13, 1890	Moses Poff	Lucy Poff
December 15, 1890	Robert Roop	Tabitha O. Wilson
May 16, 1891	William Craghead	Sarah Webb
June 28, 1891	John Henry Vest	Lettie Florence Light
August 9, 1891	John L. Link	Sallie B. Link
September 17, 1891	Oscar W. Whitenack	Mathursa Ann Lawrence
October 29, 1891	Robert L. Whitenack	Margaret A. Lawrence
December 1, 1892	Lewis Lemon Vest	Lilian O'dell Craghead

March 10, 1892	John W. Martin	Mary L. King
March 19, 1892	Elijah Whitlock	Mary E. Vest
July 17, 1892	William Harvey	Adeline Sigmon
September 4, 1892	William H. Anderson	Lola L. Bugg
November 10, 1892	Joseph M. Whitenack	Lovenia Craghead
November 24, 1892	Andrew M. Hall	Mathursday M. Collins
December 2, 1892	Ratio H. Board	Nancy G. Blackwell
December 22, 1899	Peter Smith	Sallie Harrison
January 1, 1893	Henry L. Lawrence	Juanna Hall
January 11, 1893	Gilley B. Conner	Nannie A. Conner
February 14, 1893	William R. Stump	Rilda King
February 23, 1893	Joseph P. King	Alice King
May 4, 1893	Giles K. Craghead	Mary E. Martin
June 1, 1893	Samuel A. Vest	Helen Whitenack
August 10, 1893	David L. Likens	Celia Well
November 5, 1893	William Poff	Isabelle Conner
November 6, 1893	Ernie Poff	Laura Aldridge
July 4, 1894	James M. Kennett	Ivy Vest
July 18, 1894	Samuel Shockey	Sarah J. King
July 18, 1894	Joseph S. Craghead	Matilda E. Whitlock
August 20, 1894	David H. Board	Lucy M. Vest
August 29, 1894	Kyle Muncy	Cora Light
October 10, 1894	Walter A. Laurence	Gay Whitenack
November 15, 1894	John W. Conner	Laura Eanes
November 15, 1894	C. W. Vest	Virginia Poff
December 1, 1894	Fountain Kingrea	Sarah E. Vest
December 24, 1894	_____ Poff	_____ Beckleheimer
March 2, 1895	James S. Board	Parthenia Martin
May 9, 1895	Jonathan Whitnack	Mahala Ann Vest
June 30, 1895	John A. Clower	Eliza A. Clower
December 21, 1895	Giles A. Conner	Laura L. Martin
May 31 1896	Moses Martin	Ella Weaver
July 23, 1896	John H. Green	Geneva McNeil
September 17, 1896	Charles T. Anders	Malinda Conner
October 29, 1896	J. H. Stump	Maude Whitenack
December 15, 1896	Theodore Lee Board	Emaline C. Muncy
December 29, 1896	John Conner	Mary J. Smith
January 1, 1897	Arthur W. Whitenack	Collie M. Whitenack
January 20, 1897	James B. Creasy	Virginia M. Lawrence
January 9, 1898	James L. Hodge	Lucy Clower

March 9, 1898	Andrew Lucas	Callie Clower
May 12, 1898	L. B. Anderson	Kate Burke
November 20, 1898	William Wieland	Sallie King
April 3, 1899	J.M. Poff	Martha A. Whitlock
April 14, 1899	Thomas J. Epperley	Annette Spangler
May 3, 1899	C. Milton Link	Susan Winfree
November 9, 1899	Andy King	Sally Hauks
November 15, 1899	John W. Hall	Flora M. Whitenack
November 30, 1899	Elbert Vest	May Vest
Mar. 16, 1899	Jeff Poff	Martha Whitenack
December 16, 1899	Henry Letcher Vest	Ella King
March 19, 1899	Edward Hodge	Grace Dickerson
January 24, 1900	Brainard Conner	Martha Jane Vest
February 22, 1900	Noah Vest	Lottie Light
April 1, 1900	Charles H. Sink	Peradine Smith
April 11, 1900	Robert Hatcher Basham	Martha E. Ridinger
July 15, 1900	Thomas Hungate	Sarah Dickerson
July 28, 1900	Jasper Boothe	Catherine Eanes
August 15, 1900	W. Letcher Clower	Louannie Iddings
September 10, 1900	Henry J. Light	Tempy Vest
September 13, 1900	Lewis Payne	Dora Kingrea
September 14, 1900	Cephas M. Graham	Cora E. Sumner
October 25, 1900	John L. Jones	Adeline Conner
November ?? 1900	R.E. Sanders	Cora E. Sigman
December 26, 1900	J. F. Smith	Octavia Wickham
December 27, 1900	Frank Likens	Admonia Wilson
July 11, 1901	Letcher David Hall	Hattie E. Hall
August 5, 1901	William E. Eanes	Monie Martin
September 11, 1901	Jessie D. Vest	Etta Vest
September 12, 1901	Melvin J. Gearheart	Julia Wilson
October 1, 1901	John Gearheart	Hattie Epperly
October 3, 1901	Enoch Whitenack	Eliza Dewease
December 12, 1901	Landon Clower	Della Iddings?
December 24, 1901	John Jerome Wilson	Lucy Whitenack
December 27, 1901	W. A. Akers	Ola Payne
January 19, 1902	J. W. Conner	Laura A. Vest
February 5, 1902	C. O. Carr	Regina Vest
March 12, 1902	R. E. Conner	Callie Epperly
April 3, 1902	Isaiah Sumner	Elizabeth Cunningham
May 22, 1902	James Jones	Ola Poff

December 25, 1902	Joe B. Martin	Roxie Walters
26 December 1902	Charles D. Vest	Lydia Conner
January 4, 1903	George W. Smith	Hattie Wimmer
February 26, 1903	John Furrow	Eliza McNeil
March 12, 1903	Joseph Ridinger	Cora King
March 8, 1903	Charles Keith	Zula Eanes
March 15, 1903	Giles D. Martin	Esta L. Reed
July 14, 1903	T. H. Simmons	Nancy Williams
August 9, 1903	Albert F. Clower	Imogene King
November 26, 1903	Willie F. Poff	H. J. King
December 9, 1903	John W. Conner	Laura Sisson
December 23, 1903	Oscar B. Wirt	Ida Woolwine
December 31, 1903	L. B. King	Minnie Poff
January 3, 1904	Victor Orlando Light	Roxie E. Hall
January 6, 1904	Robert Lee Vest	Lucy Biar Muncy
February 10, 1904	C. Thomas Conner	Mary Sisson
July 14, 1901	Samuel Evans Bower	Rosa Conner
September 1, 1904	James E. Spardin	Bertha Lovern
October 20, 1904	E. S. Randolph	Dora Shank
October 25, 1904	S. S. Goff	Bessie Jones
November 19, 1904	Frank B. Jones	Virginia Jones
December 22, 1904	V. T. Carr	Lula King
December 15, 1904	Charles Luther Poag	Nettie Wilson
February 26, 1905	Noah D. Conner	Hattie Kingrea
March 5, 1905	James J. Smith	Prudence Light
January 5, 1905	John Henry Eanes	Henrietta J. Vest
January 15, 1905	Hosea L. Kingrea	Sallie Ann Poff
March 15, 1905	George K. Anderson	Eliza Price
July 9, 1905	Adolphus Sisson	Annie Conner
December 20, 1905	Garfield Wilson	Cynthia Ann Wickham
December 27, 1905	John R. Poff	Delia Hall
December 28, 1905	Robert Walters	Etta Florence Wimmer
January 29, 1906	Marks Hall	Lelia Wilson
March 25, 1906	Booker Conner	Laura Woolwine
April 25, 1906	William C. Vest	Sallie Gay Whitenack
July 24, 1906	Elbert Otho Light	Effie C. Poff
September 19, 1906	Vriel Long	Della Lawrence
October 10, 1906	Samuel Lawrence	Bertha Clower
November 7, 1906	J. T. Rumburg	Ella Sue Perdue
December 2, 1906	Peter J. Martin	Laura B. Clower

December 20, 1906	Garland Lawrence	Eliza Craghead
December 26, 1906	Robert W. Conner	Marcella Vest
April 3, 1907	Samuel P. Vest	Alabama Lawrence
April 14, 1907	P. R. Wilson	Minnie F. Light
July 3, 1907	Albert Vest	Wilda McNeil
October 1, 1907	J. Lem Vest	O'dell Hale
October 23, 1907	Coy Link	Ada Akers
November 14, 1907	Cleve Eanes	Ella Wickham
November 14, 1907	Flournoy Eanes	Ida Lee Wickham
May 21 1908	Charles W. King	Virginia M. Sutphin
September 0, 1908	Hubert Willis	Martha Hodge
October 21, 1908	W. H. Clower	Stella Maxey
October 22, 1908	William A. Wright	Lelia Underwood
October 28, 1908	Alonzo Lawrence	Martha J. Iddings
December 27, 1908	Sydney Vest	Maude Lawrence
December 27, 1908	Andrew Lewis Conner	Almeda F. Vest
March 5, 1909	Haden Doss	Mintie Pugh
March 21, 1909	Wheeler Poff ?	Ocie Alice Muncy
April 1, 1909	Charlie D. Huff	Artie L. Hendricks
April 15, 1909	Posey Epperly	Arinda Hall
August 12, 1909	Robert Woolwine	Ida Mae Poff
September 22, 1909	Arthur L. Poff	Ida D. Shank
November 26, 1909	Wall Jennings	Willie Sowers
December 5, 1909	Thomas J. Bower	Ocie Jennings
April 5, 1910	G. Alfred Conner	Maudie Lawrence
May ? 1910	William Howard	Bertha Epperly
May 1, 1910	George E. Hale	Minnie Epperly
July 22, 1910	Phillip Whitlock	Della Bartell
August 14, 1910	J. W. Light	Lula Vest
August 28, 1910	Edgar Vest	Ethel Vest
October 10, 1910	Noah L. Poff	Carrie E. McNeil
December 29, 1910	Giles D. Wilson	Carrie B. Hylton
January 29, 1911	Joseph B. Vest	Virginia Wright
March 5,(?) 1911	Will J. Beckleheimer	Callie Donia Wickham
August 10, 1911	Brainard O. Vest	Maude Carr
September 14, 1911	Chester Vest	Nellie Trump
September 21, 1911	Earnest Poage	E. W. Iddings
September 24, 1911	Frank Wickham	Clara Lawrence
October 15, 1911	Archie Clower	Martha W. Iddings
October 22, 1911	Henry Cassell Dewease	Fannie B. Lawrence

November 01, 1911	H. A. Beckner	Virginia Vest
November 29, 1911	Jesse Stuart	Mary Pugh
December 13, 1911	E. D. Eanes	Della Maxey
December 24, 1911	Herbert T. Lawrence	Lucy Sisson
December 24, 1911	G. A. Lawrence	Gertie Johnson
April 16, 1912	Charles C. McNeil	Respie Muncy
September 5, 1912	Grover Carr	Imogene Iddings
September 10, 1912	Eldridge Wright	Maude Vest
November 27, 1912	Wall Jennings	Virgie Hodge
December 22, 1912	Ezra Wimmer	Laura Reed
December 29, 1912	Posey Sisson	Maude Vest
September 7, 1913	Dock Link	Alpha Boone
September 15, 1913	Guy Link	Allie Akers
December 16, 1913	Robert Charles Vest	Lucy Biar Whitenack
February 25, 1913	James H. Carr	Chloe King
March 29, 1913	Loranzo Whitenack	Myrtle Poag
September 20, 1913	Albert Rutrough	Bertha Jane Whitenack
August 16, 1914	Shirley Austin	Hester Clower
August 21, 1914	Hugh Poff	Ollie Poff
December 24, 1914	Andy W. Vest	Minnie Perdue
January 23, 1915	G. W. Collins	Maggie Vest
January 12, 1915	Chester Poag	Minnie Craghead
January 22, 1915	Edgar Epperly	Alma Richards
January 17, 1915	James Biar Vest	Louella Vest
August 19, 1915	Shirley L. Cole	Anna Mill Dewease
December 23, 1915	T. H. Thornton	Maude Craghead
December 25, 1915	J. W. Johnson	Mallie Hall
September 16, 1915	Guy Poff	Ella Boone
July 1, 1915	Magruder Willis	Nelly Boyd
February 14, 1915	Chester W. Whitenack	Gracie Vest
February 11, 1915	A. T. Perdue	Bertha Board
February 17, 1916	Hiley Epperley	Blanche Sumner
March 12, 1916	Clarence D. Wimmer	Elva Sisson
April 12, 1916	Shelmon C. Vest	Mantil Dewese
April 22, 1916	Millard Epperley	Mobie Iddings
October 19, 1916	David Beckleheimer	Mollie Green
October 29, 1916	Jasper Eanes	Aurah Clower?
October 29, 1916	D. R. Iddings	Emma Booth
January 23, 1916	Willie F. Hale	Ollie Jane Whitenack
April 18, 1917	J. W. Kingrea	Lucy Conner

Three African American couples were married by Rev. Peter R. Vest:

March 4, 1884	Benjamin Conner	Serena Wilson
April 22, 1885	John C. Reynolds	Wanda Huff
December 11, 1894	Sheldon Lawrence	Dora Smith

This list was signed by: Alice Vest Thomas, granddaughter and Mrs. Lala Vest granddaughter-in-law.

Contributed by:
Judy Blackwell
jgcb@swva.net

GENEALOGICAL QUERY

Information needed on Vincent Sirls (Searles, Sarls, Surls) and his wife Nellie of Montgomery County, Virginia; estimated year of birth 1750. Known children are: Mary (born 1774) married David Waggoner, William married Nancy Bell, Vincent Jr. (born about 1775) moved to Davidson Co., Tennessee. Other possible children are Hannah, Joseph, James and Jacob.

Loretta Simmons
1206 N. Lee
Cordell, Oklahoma 73632

John Meador Deed Records

Franklin County, Virginia

Deed Book 19 pages 441-442: Indenture 11 April 1846 John G. Meador and Sarepta his wife to Hiram Hayden in hand tract 239a ml on waters Gills Creek. "Beg. on a Black Gum in Thos Divers line thence No 57 E60p to w. oake stump, where formerly stood a corner w. o., N^o48 W11pls crofsing Bowsman's Branch to a Red Oak stump in Daniel Oyler's line where formerly stood a corner R. O. Thence with the said Oylers line S^o88 1/2 W86pls to a S. O. stump formerly a corner Spanish Oak No44 W23pls to a R. O. No28 W66pls to a w. o. in John D. Booth's line with it So8 W41pls to a Black Gum So85 W22pls crofsing a branch to a white oak in John Williams line with it Sol5 Ell4 pls to a Post Oak in Bousman's line with it So41 E62 pls crofsing Bowsmans branch to pointers Sol9 E74pls to a poplar in John Meadors line with it Sol3 E54pls Crofsing Greer's ford road to points So77 E18 pls to two Red Oak N40 1/2 E66pls to pointers in the aforesaid Divers line where formerly stood a corner w. o. thence No67 E90pls crofsing a Road to pointers and thence No44 W86 pls to the beg." Land and premises.

Jno. G. Meador. Sarepta (her x mark) Meador
Saml Hale. John D. Booth, JP Certify Sarepta who acknowledges 27 April 1846
Recorded in Court 7 December 1846

Deed Book 15 page 328: Indenter 30 August 1837 Affection love for my son Paschal Meador convey tract of Land and one negro man, Thomas, tract on waters Camping Run.

Patrick Hix. Mofses Greer, JP
Recorded Court 13 Sept 1837

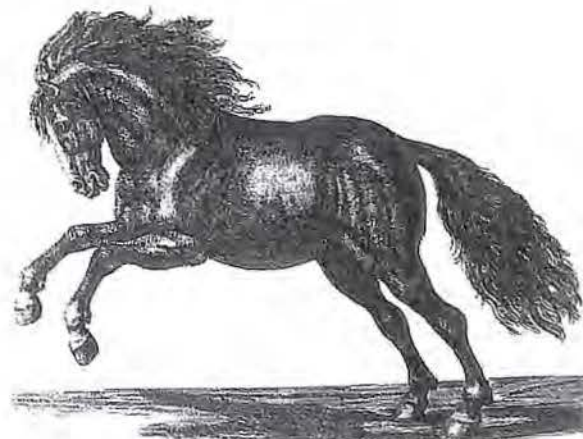
John Meador

Deed Book 19 page 168: John J. Meador to Eli Ferguson 20 Nov 1845 tract on waters Camping Run, mouth of Linville Creek, mentions Yates, Cliborns, Simmons and more. (no further information given here, consult record)

Deed Book 15 pages 364-365: Indenture 9 Sept 1837 Henry Koon and Sarah his wife to John Meador for sum \$200 tract with exception of the grave yard on the premise which right, the grantor retains in himself, lying in Franklin County on waters Gills Creek bounded by the road of Weaver, Bousman and Early containing 75a ml. Appurtenances.

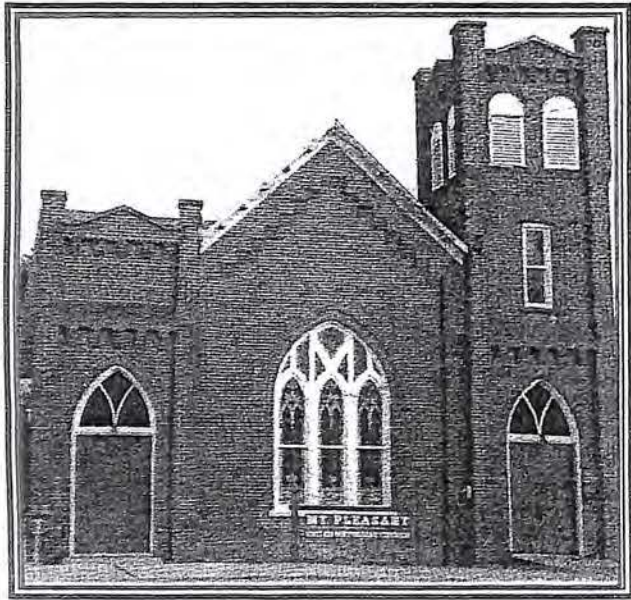
Henry Koon. Sarah Koon
Sarah examined and acknowledges 9 Sept 1837
Clerk's Office recorded 2 Oct 1837

Mary A. Barnes
1204 Allison Dr.
Rockville, MD 20851-2103



African American Ancestry

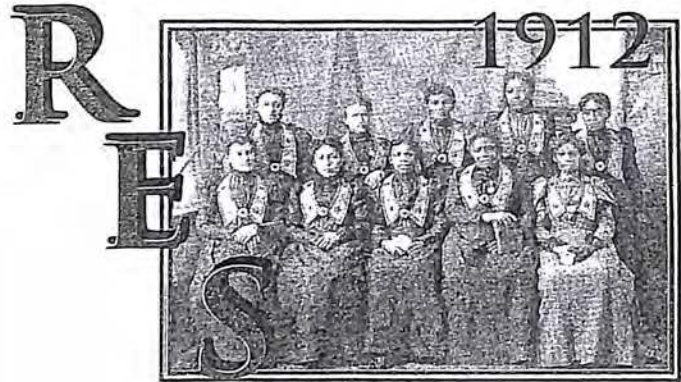
MT. PLEASANT
HERITAGE MUSEUM
320 SOUTH MAIN STREET
MARION, VIRGINIA



THE BEGINNING:

WELCOME
TO
A NEW MUSEUM

*Featuring the cultural
contributions of
Smyth County African-Americans*



T
O
R
E
THE
E



Most aspects of African American History is undocumented in Southwest Virginia. If these histories go unrecorded, a remarkable saga will go untold and will be lost to future generations.

WHAT HAS BEEN DONE?

On August 8, 2001 with the help of a committee of Marion, Virginia citizens. Evelyn Lawrence organized the Mt. Pleasant Preservation Association (MPPA) to insure the preservation and the use of the Mt. Pleasant Church.

With the aid of Atty. John Graham and Rev. Harry Howe this goal was attained and the church building sits ready to be used as a Community Center and an African American Museum.

MISSION

The Mt. Pleasant Heritage Museum is partnering with "Project Crossroads," as a non-profit group, to focus on the preservation of the Church, to be used as a Community Center for worship services, programs and meetings; and as an African American Museum to promote the cultural contributions of African Americans to Smyth County, the state and the nation.

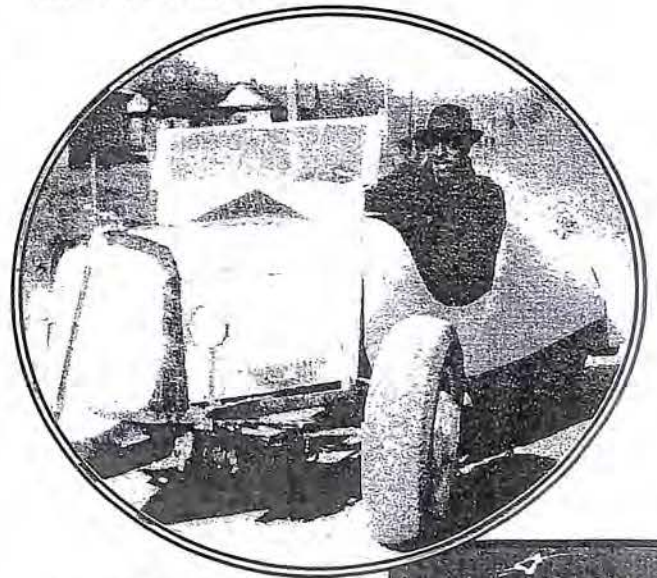
There was once a society of people, in this area, who are with us no more.

Their lives were filled with sacrifice, social injustice and deprivations; a people who counteracted with courage, triumph and outstanding achievements.

But the voices of these people have been stilled and will not be heard audibly again. We've heard the stories told by these voices, that were never written down.

But there are ways to bring these voices back. The task rests with the present generation.

Harry Plummer, inventor/chemist



*1915-Susie Madison Thompson
Dedicated Pioneer in
Smyth County Education
She was the first black
teacher in Sugar Grove
and also taught in one
room schools in Emory
and Pearisburg.*



YOU



Marion School

CAN

H



"The Old Red Barn"
(circa 1940)

HELP

How?

COLLECT: Artifacts, old books, letters, photographs, fliers and posters, site maps, old items in attics or basements.

CHECK: Court House records, old documents, church records, family Bible, memorable events.

SHARE YOUR INFORMATION
BOTH PAST & CURRENT
WITH
MT. PLEASANT HERITAGE
MUSEUM

MT. PLEASANT
HERITAGE MUSEUM
312 BROAD STREET
MARION, VIRGINIA 24354-2804

We look forward to having you and your family join the "Museum Family." Begin your research now and let us hear from you.

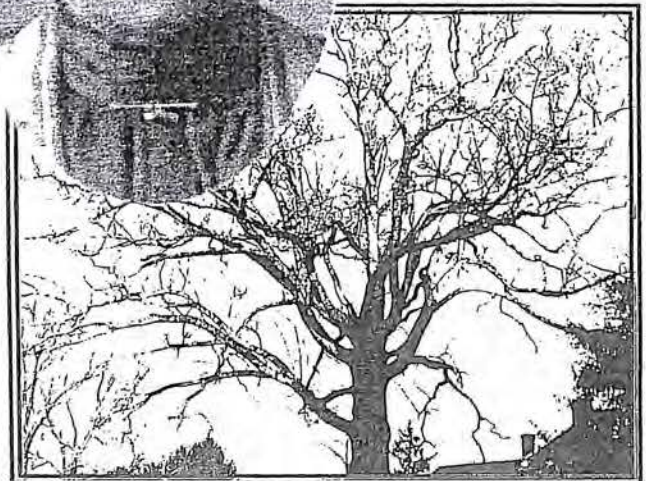
The problem in the establishment of any project is a financial one. The key to success in building and sustaining an on-going museum rests with the members. Regular contributions are needed.

A grant is being sought. Mt. Pleasant, which is located in Marion's historic district, qualifies.

We already have and are grateful for contributions from friends in Marion, Chilhowie, Sugar Grove, Meadowview and Atlanta.



"Sally"



"Crying Tree"

One of Virginia's 100 most outstanding trees.

Donor Level:

- _____ Individual \$20 and up
- _____ Contributing \$25 and up
- _____ Sponsor \$100 and up
- _____ Benefactor \$500 and up and up
- _____ Gift

SOCIAL SECURITY NUMBER ALLOCATIONS

Since 1973, social security numbers have been issued by our central office. The first three (3) digits of a person's social security number are determined by the ZIP Code of the mailing address shown on the application for a social security number. Prior to 1973, social security numbers were assigned by our field offices. The number merely established that his/her card was issued by one of our offices in that State.

THIS DATA IS STRICTLY FOR INFORMATIONAL PURPOSES

The chart below shows the first 3 digits of the social security numbers assigned throughout the United States and its possessions.

001-003 ...New Hampshire	387-399 ...Wisconsin	526-527 ...Arizona
004-007 ...Maine	400-407 ...Kentucky	600-601
008-009 ...Vermont	408-415 ...Tennessee	525-529 ...Utah
010-034 ...Massachusetts	756-763*	646-647
035-039 ...Rhode Island	416-424 ...Alabama	530 ...Nevada
040-049 ...Connecticut	425-428 ...Mississippi	680*
050-134 ...New York	587	531-539 ...Washington
135-158 ...New Jersey	588*	540-544 ...Oregon
159-211 ...Pennsylvania	752-755*	545-573 ...California
212-220 ...Maryland	429-432 ...Arkansas	602-626
221-222 ...Delaware	676-679*	574 ...Alaska
223-231 ...Virginia	433-439 ...Louisiana	575-576 ...Hawaii
691-699*	659-665*	750-751*
232-236 ...West Virginia	440-448 ...Oklahoma	577-579 ...District of Columbia
232 ...North Carolina	449-467 ...Texas	580 ...Virgin Islands
237-246	627-645	580-584 ...Puerto Rico
681-690*	468-477 ...Minnesota	596-599
247-251 ...South Carolina	478-485 ...Iowa	586 ...Guam
654-658*	486-500 ...Missouri	586 ...American Samoa
252-260 ...Georgia	501-502 ...North Dakota	586 ...Philippine Islands
667-675*	503-504 ...South Dakota	700-728 ...Railroad Board**
261-267 ...Florida	505-508 ...Nebraska	
589-595	509-515 ...Kansas	
268-302 ...Ohio	516-517 ...Montana	* New areas allocated, but not yet issued
303-317 ...Indiana	518-519 ...Idaho	
318-361 ...Illinois	520 ...Wyoming	** 700-728 Issuance of these numbers to railroad
362-386 ...Michigan	521-524 ...Colorado	employees was discontinued July 1, 1963.
	650-653*	
	525,585 ...New Mexico	
	648	
	649*	

Land Records

Where They Came From - How We Got Them

As the United States expanded westward from the Thirteen Original Colonies, Congress recognized the need for an orderly system of surveying and describing the Federal lands to be opened for settlement. On May 20, 1785, the Continental Congress enacted a land disposal ordinance establishing a Public Land Survey System based on a rectangular grid, and authorized the Treasury Board to sell public lands for revenue.

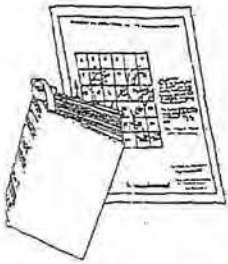
The General Land Office (GLO) was established within the Treasury Department in 1812 to take charge of all survey and land title records. GLO became part of the newly-created Department of the Interior in 1849, and merged with the U.S. Grazing Service in 1946 to form the Bureau of Land Management (BLM). BLM is now custodian of the land records, including more than 7.5 million ownership titles covering 1.5 billion acres of present or former Public Domain land. More than 5 million of these title documents are stored and maintained at BLM's Eastern States office in Virginia.



The Records We Maintain

The first land records developed from the Ordinance of 1785 were survey field notes. Government surveys began in Ohio in 1785 and progressed westward to open more territory for settlement. The surveyor prepared the field notes describing the survey performed. The notes might include the names of very early settlers living in the survey area and a variety of descriptions of land formations, climate, soil, and plant and animal life.

Survey plats are drawings of the boundaries created by each survey. Plats are prepared by draftsmen who base their drawings on information in the field notes and surveyor sketches. The survey plats do **not** show ownership or land status.



Land ownership, protected by a legal title, is a hallmark of western civilization. As the Public Domain was surveyed, the Federal Government began transferring title of land parcels to private citizens, companies, and local governments. Most titles were transferred by patents (deeds) from the Federal Government. Records of these patents and other conveyances of title—such as railroad grants, swamp grants, school grants, Indian allotments, and private land claims—are contained in large-sized tract books. First developed around 1800 and maintained in local land offices, tract books have long served as the essential reference source for all transactions involving public lands. They tell who obtained what land from the Federal Government and when.

BLM's Eastern States maintains approximately 2,000 GLO tract books containing the land records for the 13 public land states under its jurisdiction: Alabama, Arkansas, Florida, Illinois, Indiana, Iowa, Louisiana, Michigan, Minnesota, Missouri, Mississippi, Ohio, and Wisconsin. Considered the largest land title office in the world, Eastern States maintains almost five million Federal land conveyance documents issued before and after the U.S. constitution was ratified. These conveyance documents include homesteads, cash sales, miscellaneous warrants, private land claims, railroad lists, and State swamp lists and selections. We **do not** have the land ownership records that come after this first patent. (These records are under State jurisdiction and are usually kept at the local county courthouse or recorders' offices.)

The historic tract books are continually used by the Eastern States' staff, Federal and state agencies, title insurance companies, industry, researchers, and others. The continuous use of many of these old books has caused much wear and tear, despite the efforts of artisan bookbinders using old skills and new technologies to help maintain the books in usable form. These old records are literally being

"Preserving America's Heritage," The General Land Office Records Project

BLM faced an urgent need to preserve and protect these records, but still insure their availability for research. Technology provided the answer. In 1989, Eastern States launched a unique project--the GLO Automated Records Project--to copy these priceless conveyance documents onto computer-read laser disks. Once copied, the historic documents can then be retired and stored in acid-free boxes in a climate-controlled vault.

This Project offers researchers a single source of recorded information on lands once in Federal ownership, such as data regarding current Federally-owned lands and minerals; which Federal agency has jurisdiction over the land surface; and what individuals or entities first received the land from the Federal Government.

The GLO Automated Records System has the capability to provide such information to State land officials, county clerks, industry representatives, and the public through requests from remote computer terminals. Access to these old records will be effortless, and the original documents will maintain their integrity and value to historical research or other critical uses.



["www.glorerecords.blm.gov"](http://www.glorerecords.blm.gov)

If We've Got It, You Can Get It

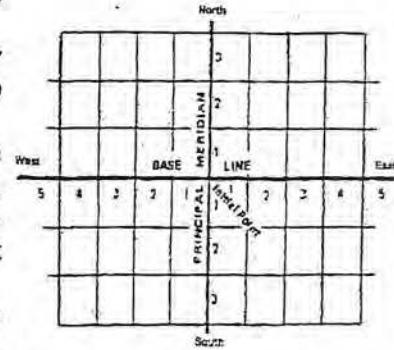
Every month, the BLM, Eastern States, furnishes certified copies for hundreds of patents. Most requests for copies come from genealogists seeking information about their ancestors. Individuals and firms involved in real estate and in minerals exploration and development find these records essential to knowing whether or not the United States owns the land, or if mineral rights were reserved to the Federal Government when the United States conveyed title to the land.

Many of these requests come from the southern States where the burning of county courthouses during the Civil War caused the loss of many title records. The records are also of value in historical research.

If you can provide the legal description of a parcel or parcels, BLM can locate the patent and supply you with a copy. The legal description should include the subdivision, section, township, range, survey meridian, and state. Until very recently, the name of the landowner alone has not been sufficient, because the land records of most states are not indexed by name.

Now, available via the internet, BLM offers information on historic land patents from all 30 public land states (those not included in the original 13 colonies), east and west. Cash and Homestead patent images and data for 13 eastern public lands states have been online for about 9 years. Now the "serialized" patents can be found on-line--these records include post-1908 conveyances issued chronologically from the headquarters General Land Office/BLM in Washington, D.C. Currently, we are in the process of automating the Military Warrants issued under the Acts of Congress dated 1847, 1850, 1852, and 1855. Data and images are being made available daily, as the automation of the GLO records continues. The website also includes indexes to patents issued prior to 1908 for most western states. The website has image display capabilities to include TIFF, GIF, and PDF formats.

The survey plats and field notes are now being added to the GLO Records website. These hand drawn plats were made from the descriptive field notes in preparation for the Federal Government's sale of public lands. These plats show the landscape as it was prior to American settlement as well as legal surveying measurements. Occasionally these plats indicate man-made features, both Indian and from early pioneers, however they do not show ownership information or land status. Today these plats still have legal, historical and scientific value.



Visit our website at <http://www.gloreCORDS.blm.gov>.

Bureau of Land Management,
Eastern States
7450 Boston Boulevard
Springfield, Virginia 22153

Public Information Center: (703) 440-1600
Internet mailbox: records@es.blm.gov
FAX: (703) 440-1609
Public Affairs Office (703) 440-1713

Even If We Don't Have It, Someone Else Probably Does

Because the Thirteen Original Colonies and their territories were not a part of the Federal lands acquired during national expansion, we do not maintain the land records of 18 eastern non-public land states or the District of Columbia. These states are: Connecticut, Delaware, Georgia, Kentucky, Maine, Maryland, Massachusetts, New Hampshire, New Jersey, New York, North Carolina, Pennsylvania, Rhode Island, South Carolina, Tennessee, Vermont, Virginia, and West Virginia. Also, we do not have records for Texas and Hawaii.

Inquiries concerning land records for these states should be directed to the individual state archives or land records offices.



Bureau of Land Management

The Bureau of Land Management (BLM) is an agency within the Department of the Interior. We are responsible for managing the Nation's public lands and resources in ways that best serve the needs of the American people. Management is based on the principle of multiple use and sustained yield--a combination of uses that balances the needs of future generations for renewable and nonrenewable resources. These resources include recreation, range, timber, minerals, watershed, fish and wildlife, wilderness and natural scenic, scientific and cultural values. BLM's Eastern States (ES) organization is the steward of the public lands and resources under the jurisdiction of BLM in the 31 states east of and bordering on the Mississippi River. These public lands and resources are managed to protect the environment and provide a diverse array of products and outdoor experiences. In addition to maintaining and protecting the Secretary of the Interior's official land records, ES also performs cadastral surveys for other Federal agencies and helps place many of America's wild horses and burros into adoptive homes.

Visit BLM's Home Page: <http://www.blm.gov>

01/09

Traditional Genealogy Search Methods Are Often Needed For Virginia Records

Access to so much information online may mislead you into thinking you can solve tough Virginia genealogy research problems with a few clicks of the mouse. Not so!

Record loss because of **missed** entries in sources that were:

- 1) written on convenient slips of paper torn from edges of record books
- 2) copied into ledgers provided by government agencies
- 3) microfilmed by technicians who often had no idea what they filmed
- 4) scanned into digital format from microforms
- 5) indexed by non-English speakers in foreign lands
- 6) searched by selected spellings
- 7) retrieved mechanically by exact spelling as typed by foreign indexers

Read Lynn C. McMillion, "An Index Can Be A Roadblock," *The Virginia Genealogist* 21 (July-Sep 1977) 205-06. Ms McMillion cautions, "Good effective research can begin with a published index, but **MUST NOT END THERE**. Search an index for alternate spellings of the name; then locate them in the actual census...When too much reliance is placed on indexes—especially mass-produced ones—they become roadblocks to research."

You can read the census records online frame by frame without using online indexes. Just remember that the online version comes from microfilm, not a new scanning of the original handwritten pages. If the filmer missed a page, you will too. And page numbers are not a lot of help—because they have been numbered and re-numbered over and over.

If you sit quietly in the corner of your local genealogy library with a stack of *The Virginia Genealogist* issues beside you, you can begin to make some progress. John Frederick Dorman edited the magazine from 1957 to 1996, filling 40 volumes with record extracts.

There is a basic focus in those volumes, if you do sit quietly and examine them all. Dorman sought to fill in the gaps where the records were missing. He included the 1800 tax lists county-by-county (alphabetically). He printed the British Mercantile Claims, 1775-1803 serially—providing more specific details than more recent printed versions.

Genealogists from all over the country submitted names missed in printed census editions. For example, "Some Corrected Readings to the 1625 Census," submitted by William Thorndale, Volume 37 (Jan-Mar 1993) 54. And "Virginia 1820 Federal Census: Names Not On The Microfilm Copy," submitted by Gerald M. Petty, Volume 18 (Apr-Jun 1974) 136-39.

"Some Delinquent Taxpayers, 1787-1790," submitted by Robert Y. Clay, Volumes 19-21 (1976-1978). These census substitutes for the missing 1790 schedules, also give the **next place of settlement** for those Virginians who left without clearing their tax bills. A very nice bonus. These

are just examples of the goodies that await you.

Account books, militia lists, legislative petitions, land office warrants, and special census schedules for the independent city of Alexandria continue the focus on those sections of Virginia where record loss is especially grievous. And each volume is indexed and there are cumulative indexes in the reprint and CD editions

Many genealogy libraries subscribed to *The Virginia Genealogist* from the beginning. Libraries established later acquired the reprint edition from Heritage Books of Bowie, Maryland. Or ordered the CD-Rom available in 1994. If you want your own set, most of the volumes are still available: <http://www.heritagebooks.com>.

Or you can access the volumes at your local Family History Center on 3 rolls of microfilm, FHL 844855-57.

Your favorite Virginia Genealogist,

Arlene Eakle Website: <http://www.arleneeakle.com>

PS - I don't hesitate to read the handwritten records when I work on a tough Virginia ancestor and you shouldn't hesitate either.

Reprinted by permission of Arlene Eakle.

NEWS FROM THE PAST

January 9, 1891
The Roanoke Times

Our correspondent, "Front Row," is right and wrong. Roanoke fares better than the average city of its size in the matter of theatrical performances. It is on a trunk line and gets the best companies on the road. The Greenwood Opera Company, Clara Louise Kellogg, Robert McLean and Marie Prescott have been here the present season, and are in the front rank as theatrical attractions. Evans and Hoey will be here to-morrow night and give a performance at a less price than it can be seen in Washington. On the other hand, "Front Row" is right in complaining of the building in which the performances are given. Roanoke ought to have a hundred thousand dollar opera house, with a seating capacity of not less than 1,500. Manager Beckner, "Front Row" and The Times are right in a line on that.

Oral History Questions

This list of oral history questions was compiled from a variety of sources by Joanne Todd Rabun in 1992. They included a 6th grade class project of her daughter and a college-level Women's Studies class project of her nephew. She used them to produce a booklet entitled "The Life and Times of Winnie Lackore" to commemorate Winnie's 90th birthday celebration.

- * What is your full name and why were you named it?
- * Were you named after somebody else?
- * Did you have a nickname as you were growing up?
- * If you did, what was it and why did they call you that?
- * Have you had other nicknames as an adult?
- * What do family members call you now?
- * Where were you born and when?
- * Do you remember hearing your grandparents describe their lives?
What did they say?
- * Do you remember your great-grandparents? What do you know about them?
- * Who was the oldest person you can remember in your family as a child?
What do you remember about them?
- * Do you remember your family discussing world events and politics?
- * Was there a chore you really hated doing as a child?
- * What would you consider to be the most important inventions that
have been made during your lifetime?
- * How is the world now different from what it was like when you were
a child?
- * What kinds of books did you like to read?
- * Do you remember having a favorite nursery rhyme or bedtime story?
What was it?
- * Do you ever remember not having enough food to eat because times
were hard for your family?
- * What were your favorite toys and what were they like?
- * What were your favorite childhood games?
- * What were your schools like?
- * How did you get to school?
- * What was your favorite subject in school and why?
- * What subject in school was always the easiest for you?
- * What was your least favorite subject in school and why?
- * Who was your favorite teacher and why were they special?
- * How do your fellow classmates from school remember you best?
- * What school activities and sports did you participate in?
- * Did you and your friends have a special hang-out where you liked to
spend time? Where was it and what did you do there?

- * Were you ever given any special awards for your studies or school activities?
- * How many years of education have you completed?
- * Do you have a college degree? If so, what was your field of study?
- * Did you get good grades?
- * Did you like school?
- * What did you like the most and the least about it?
- * What did you usually wear to school? Describe it.
- * Were there any fads during your youth that you remember vividly?
- * How old were you when you started dating?
- * Do you remember your first date? Describe the circumstances.
- * Name a good friend that you have known for the longest period of time?
How many years have you been friends?
- * Has there ever been anyone in your life that you would consider to me your kindred spirit or soul mate? If so, who were they and why did you feel a special bond to them?
- * How did you meet the person that you would later marry? Describe them?
- * Do you remember where you went on the first date with your spouse?
- * How long did you know them before you got married?
- * Describe your wedding proposal.
- * When and where did you get married?
- * Describe your wedding ceremony. Who was there?
- * Did you have a honeymoon? If so, where did you go?
- * How would you describe your spouse? What do (did) you admire most about them?
- * How long have you been married (or were you married)?
- * What wise advice would you give to a grandchild on their wedding day?
- * How did you find out that you were going to be a parent for the first time?
- * How many children did you have all together?
- * What were their names, birthdates and birthplaces?
- * Do you remember anything that your children did when they were small that really amazed you?

GENEALOGY POX

Warning: NO KNOWN CURE
(Very contagious in mature adults)

SYMPTOMS: Continual complaint as to need for names, dates and places. Patient has a blank expression, sometimes deaf to spouse and children. Has no taste for work of any kind, except feverishly looking through records at libraries and courthouses. Has compulsion to write letters and send e-mails. Swears at the mailman when he doesn't leave mail. Swears at computers when there is no e-mail in the in-box. Frequents strange places such as cemeteries, ruins and remote, desolated country areas. Makes secret calls. Hides phone bills from spouse. Mumbles to self. Has strange faraway look in eyes.

TREATMENT: Medication is useless. Disease is not fatal but gets progressively worse. Patient should attend genealogy workshops, subscribe to genealogical magazines and be given a quiet corner in the house where they can be alone.

REMARKS: The usual nature of this disease is - the sicker the patient gets, the more he enjoys it.

TIPS FOR PLANNING A SUCCESSFUL FAMILY REUNION

- 1) Name tags for everybody.
- 2) Be sure to have a camcorder, and after the reunion provide/sell copies of the video.
- 3) Have a display area showing everyone on the family tree. If people want to share photos, documents, etc., look into renting a copier.
- 4) Assign someone to schedule games. Prizes could be small like a mug, t-shirt, etc., with the family name on it.
- 5) Put together a Family Trivia Pursuit game.
- 6) Make a family time capsule. Family members could write down memories, bring pictures or anything they would like to put in the capsule. The idea is how you would want others to know your family. One family put their items in a small footlocker and donated it to the local historical society in the family name.
- 7) Have family members bring odd pictures that not too many have seen, and guess who they are.
- 8) Ask family members to bring one wrapped gift, something about/of/from the family. The gifts are numbered as they are registered and given out as door prizes.
- 9) Give prizes for the oldest, youngest, farthest traveled, most children, etc.
- 10) Have a story telling time, with the elders telling stories that begin with sentences like, "The orneriest thing my brother/sister ever did to me while we were growing up was..."
- 11) Sell t-shirts with the family name/crest.
- 12) Make a xeroxed family history coloring book that tells the family story.
- 13) Buy discount stuffed animals and send one home with each child. Sometimes the teenagers want one, too.
- 14) Have crafts for the kids: necklaces, marble pouches, something they can make and take home. Or, have face painting, bubbles, ring toss, etc.
- 15) Have everyone handwrite a recipe card or paper, copy them and make a family cookbook.
- 16) Laminate copies of family photos for a placemat to be taken home.
- 17) Make a family calendar showing everyone's birthday.

Something to think about: Some folks might not be at the next reunion, so make it one they will remember. Have something interesting for all age groups.

Botetourt County Death Records by Charles T. Burton - continued

MALOW, Mary (widow) - b ca 1767 Pa - d 25 Aug 1857 - cd diorohear - rep by son Mitchell MALOW

MAN see MANN, William RENTFRO

MANGUS, male - b 13 Jan 1915 Bot Co - d 13 Jan 1915 - f M W MANGUS (b Bot Co) - m Frances (JAMISON) (b Fkln Co) - buried Mill Creek cem - cd premature

MANGES, Aubrey Jamison - b 22 Nov 1912 Bot Co - d 27 Nov 1912 - f Marshall MANGES (b Bot Co) - f Frances M (JAMISON) (b Fkln Co) - buried Mill Creek Cem - cd complicated delivery

MANGUS, Daniel - b 19 Aug 1815 - d 28 Aug 1880 - h/o Mary MANGUS (d 1886) - grave Haymakertown cem

MANGUS, George - b ca 1788 Pa (census #1675) - d 3 May 1854 - cd unkn - rep by son Daniel MANGUS - h/o Mary MANGUS - adm Daniel MANGUS

MANGUS, George W - b 20 Mar 1840 - d 28 Feb 1906 - grave Haymakertown cem

MANGUS, Ida S - b 12 Mar 1869 - d 28 June 1869 - f [George W MANGUS] - m [Susan E] - grave Haymakertown cem

MANGES, John Daniel - b 8 Apr 1908 Bot Co - d 3 Sep 1913 - f C W MANGES (b Va) - m Leona E (WHITE) (b Va) - buried Haymakertown cem - cd intestinal inflamation

MANGUS, Leona Ellena - b 26 June 1882 Haymakertown - d 15 Nov 1912 - f W W WHITE (b Va) - m Catherine (PAINTER) (b Va) - buried Haymakertown cem - cd gasoline burns

MANGUS, Lewis Edward - b ca Jan 1858 Bot Co - d 7 Feb 1859 - age 1y 1m - f Daniel MANGUS - m Polly - cd 'information' of the brain - rep by father

MANGUS, Mary - b 19 Nov 1816 - d 3 Aug 1886 - w/o Daniel MANGUS - grave Haymakertown cem

MANGUS, Mary S - b 17 Mar 1880 - d 3 Jan 1881 - f D H MANGUS - m C L - grave Haymakertown cem

MANGUS, Mattie M - b 11 May 1875 - d 26 Apr 1879 - grave Haymakertown cem

MANGES, Ruby Leona - b 20 Dec 1904 Va - d 25 Mar 1915 - f Charles W MANGES (b Va) - m Leona (WHITE) (b Va) - buried Haymakertown cem - cd erysepelas of right leg

MANGUS, Willia J - b 31 May 1878 - d 4 Jan 1881 - f D H MANGUS - m C L - grave Haymakertown cem

MANKEY see William SIMMONS

MANKY, Elizabeth - b ca 1807 Aug Co - d 27 June 1869 - age 62y - f Jacob BYERLY - m M - rep by hus Philip MANKY

MANLEY, Richard - d by 26 Jan 1804 - Ref WB B p79, app

MANN see **William RENTFRO**

MANN, John - d by 11 May 1780 marked out, written above is 4 May 1778 - Ref WB A p193, 206, app, Admr bond, settlement - admr **Moses MANN**

MANN, Thomas - d by 9 Feb 1773 - admr bond - admr **William MANN**

MANKY, Nicholas - d by Feb 1824 - Ref WB C p543, will dated 20 Oct 1812 - wife **Barbara**; ch **George** & others not named; bro **David** of Pa

MANN, William - d by 10 Nov 1778 - Ref WB A p96, will dated 3 Feb 1778; Admr bond - wife **Jeane**; ch **Moses, Thomas, William, John, Ealie, Jenny, Sarah,** & one unborn - admr **Jean MANN, James GRAHAM, Robert ARMSTRONG**

MANN, William [maybe a duplicate] - d by Feb 1795 - Ref WB [no vol or p given], app

MANSPILE, Preston - b Nov 1895 Bot Co - d 28 Nov 1917 - f **A J MANSPILE** (b Rb Co) - m **Lucy (WARNER)** (b Bot Co) - buried Zions Hill cem - cd killed by train

MARKHAM see **Fannie A BRYAN, Mary DODD, J J BRYANT, Harriet Ann JOHNSON, George WILKERSON**

MARKHAM, female - b 4 June 1914 Bot Co - d 4 June 1914 Bot Co - f **William E MARKHAM** (b Bed Co) - m **Nina Frances (BOWER)** (b WV) - buried Arcadia Cem - cd prolonged labor

MARKHAM, Amanda - b ca 1834 Bot Co - d 2 May 1859 Bot Co - age 25y - f **E TUCKER** - cd scroffalo - rep by f-i-1 **M[arshall] MARKHAM** - w/o **Marshall** (marked out) written above **William A MARKHAM**

MARKHAM, Cornelius A - b ca 1838 Va (census #1055) - d by 10 Mar 1862 Bot Co - f **Tilghman MARKHAM** - m **Catherine** - adm **Tilghman MARKHAM**

MARKHAM, Dovie - b Apr 1912 Bot Co - d 2 June 1913 Bot Co - f **Henry Albert MARKHAM** (b Bot Co) - m **Ella (BRYANT)** (b Bot Co) - buried family cem - cd flux

MARKHAM, Gilbert Jackson - b 13 Sep 1896 Va - d 24 Dec 1912 Bot Co - f **John Marshall MARKHAM** (b Va) - m **Lucy Bell WORLEY** (b Va) - buried family cem - cd typhoid fever

MARKHAM, Idora (single) - b ca 1861 Bot Co - d 11 Dec 1864 Bot Co - age 3y 0m 10d - f **William T MARKHAM** - m **Matilda [FLIPPO]** - cd diptheria - rep by father

MARKHAM, J[ohn] P, Rev - b 23 Feb 1813 - d 17 Feb 1898 Bot Co - f **[Nathaniel] MARKHAM** - m **[Nancy Agnes]** - wife **Kiziah POLLARD** - grave Mill Creek Cem

MARKHAM, James - d by 26 Sep 1900 Bot Co - cd accidentally shot by **Dolly VINES** - Inquest papers

MARKHAM, James [L] (md) - b ca 1790 Va - d Mar 1850 Bot Co - age 60y - cd cold - Ref 1850 Bot Co Mort Schedule - wife **[Elizabeth VEST]**

MARKHAM, Jessie Solomon - b 11 Mar 1840 Bot Co - d 23 Mar 1917 Bot Co - f **Jessie MARKHAM** (b Va) - m **Mary (CANNADY)** (b Va) - buried family cem - cd cerebral hemorrhage

MARKHAM, Liza Jane - b 28 July 1833 Bot Co - d 7 Jan 1917 Bot Co - f Thomas FALLS (b Bot Co) - Eliza J (UTT) [Utt is circled & EURICK or EWRICK is written] (b Bot Co) - buried Lithia cem - cd old age & Avitis (see nosis) - [hus Fleming E MARKHAM]

MARKHAM, Margret - b 15 Sep 1837 Va - d 15 Sep 1915 Bot Co - f Owen MARKHAM (b Va) - m Nancie (WATSON) (b Va) - buried Jennings Creek Cem - cd blood poison

MARKHAM, Nicholis Owen - b 30 Dec 1836 Bot Co - d 18 Jan 1914 Bot Co - f Marshall MARKHAM (b Bed Co) - m Martha (WATSON) (b Bed Co) - buried family cem - cd dropsy - [wife Rebecca N]

MARKHAM, Raymond Wilson - b 6 Dec 1912 Bot Co - d 12 June 1913 Bot Co - f Charles Breckenridge MARKHAM (b Bot Co) - m Etaw (SHORTER) (b Bot Co) - buried family cem - cd flux

MARKHAM, Susan J - b ca 1852 Bot Co - d 25 June 1855 Bot Co - f Josee [Jesse] E MARKHAM - m Mary [KENNEDAY] - cd typhoid fever - rep by father

MARKHAM, Virgil A - b ca 1841 Bot Co - d 4 June 1862 Bot Co - age 21y 10m - f J[ohn] P MARKHAM - m Kiziah - cd fever - rep by father

MARKLE see William McCLENACHAN

MARKRAFF, Joseph - b Germany - d 4 June 1913, buried Alms house cem - ref Death Certificate - cd Sarcoma of face, neck, mouth & tongue

MARKS, Henry B - d by 11 May 1868 - admr 11 May 1868 James M FIGGATT

MARGUART see David OBENSHAIN, Lewis T OBENSHAIN, Matthew OBENSHAIN, Samuel OBENSHAIN

MARTIN see Philip Henry BAKER, Hermit HALE, Cecil S LOYD, James MAYS, William Lee RUFF

MARTIN, ___ - d by 8 Dec 1801 (Bot Co dau called an orphan) - dau Jane

MARTIN, Asbury - b ca 1839 Va (census #1200) - d by 14 Apr 1862 Bot Co - f Ephraim MARTIN - m Rhoda - adm Andrew HANNAH

MARTIN, Betty A - b ca 1847 - d 13 Jan 1899 Bot Co - age 52y - grave Mt Mariah Lutheran cem

MARTIN, Charles H - b ca 1854 Bot Co - d 10 May 1854 Bot Co - f James S MARTIN - m Virginia - cd hooping cough - rep by father

MARTIN, Ciger? (Macijah) (male) - b ca Feb 1868 Bot Co - d 4 July 1868 Bot Co - age 4m 10d - m Julia MILLER? - cd hives - rep by mother Julie ?MILLER

MARTIN, Conrad - b ca 1775 Pa - d 27 Nov 1856 Bot Co - cd dropsy - rep by son Hiram MARTIN - wife [Eva]

MARTIN, Elizabeth (widow) - b ca 1780 Winchester, Va - d 31 Aug 1837 Bot Co - age 77y - cd cholera morbus - rep by dau Mary Ann HAMILTON - widow of John P MARTIN - Ref Death bk; Mt Union gravestone

MARTIN, Frederick A - b ca 1828 Bot Co (census #1245) - d 20 July 1854 Bot Co - f Thomas MARTIN - Mrs Mary [BRYAN] BOYD - cd disentary - rep by bro William W BOYD - adm (14 Aug 1854) Pleasant M MARTIN & (9 May 1859) W^m W BOYD; admr 12 Nov 1867 Thomas F MARTIN

MARTIN, Henry C - b ca May 1842 Bot Co - d 2 Dec 1861 Orange Court House, Va - age 19y 6m 20d - f Abraham [or Archibald] MARTIN - m Susan - rep by father

MARTIN, James (M) or S - b ca 1810 Bot Co - d 15 Mar 1868 Bot Co - age 58y - f William MARTIN - m Charlotte [ROBIOU] - cd consumption - rep by son John MARTIN - h/o Virginia MARTIN

MARTIN, James W - d by 9 Feb 1863 - adm Lewis LINKENHOKER, sheriff

MARTIN, John - b ca 1822 Bot Co - d Oct 1860 Bot Co - age 38y - f Ephram MARTIN - cd 'drowning' - rep by father

MARTIN, John C - b ca 1841 Bot Co - d 25 Aug 1866 Bot Co - age 25y - f Hiram MARTIN - m Catherine - cd fever - rep by father

MARTIN, John Philip - b ca 3 June 1781 - d 7 June 1850 Bot Co - age 69y 0m 4d - h/o [Elizabeth] - ref Mt Union gravestone

MARTIN, John W - b 1861 - d 1932 Bot Co - h/o Mattie M MARTIN (1867-1936) - Ref Lemontown gravestone

MARTIN, Johnson - d by June 1818 Bot Co - Ref WB C pl21, will dated 22 Feb 1810 - wife ___; ch: Nancy (md ___ BARTEL has been marked out), Judy, Sarah, Feby, Bartlet; s-i-1 Thomas PEAS - Ex^r Thomas PEAS

MARTIN, Josiah - d by 9 Oct 1820, order, Bot Co - Ref WB C p302, dower assigned - wife Polly

MARTIN, Mary A - b ca 1836 Va - d 3 Sep 1916 Bot Co - f Aaron PERSINGER (b Va) - m Mary (BENNETT) (b Va) - cd old age

MARTIN, Mary B - d by 11 Aug 1862 Bot Co - adm T F MARTIN

MARTIN, Mary E - b 30 July 1791 - d 24 Mar 1857 Bot Co - ref Lemontown cem

MARTIN, Mattie M - b 1867 - d 1936 Bot Co - w/o John W MARTIN (1861-1932) - ref Lemontown gravestone

MARTIN, Mildred F - b 22 Jan 1841 - d 8 Aug 1935 Bot Co - grave Amsterdam cem

MARTIN, Neomi Jane - b 18 Aug 1839 - d 27 Mar 1917 Bot Co - f F B CALDWELL (b Bot Co) - m Nancy (KELLY) (b Bot Co) - buried Mt Pleasant Cem - cd burn - [md #1 21 Jan 1858 Bot Co John H Fridley]

MARTIN, Philip (md) - b ca 1779 Pa - d June 1869 Bot Co - age 70y - cd paralasis - ref 1850 Bot Co Mort Schedule

MARTIN, Pleasant M - b ca 1824 Va (census #1234) - d by 9 May 1859 Bot Co - f Thomas MARTIN - m Mary (BRYAN) BOYD - adm William W BOYD; #2 12 Nov 1867 Thomas F MARTIN

MARTIN, Priscilla - b ca 1832 Bot Co - d 15 Oct 1854 Bot Co - f Ephraim MARTIN - m Rosetta - cd cancer - rep by father

MARTIN, Samuel H - b 10 oct 1830 - d 21 Dec 1902 Bot Co - grave Amsterdam cem

MARTIN, Thomas E - b ca 1845 - d 9 Aug 1917 Bot Co - age 72y - f William MARTIN - grave Mt Mariah Lutheran cem

MARTIN, William R - b ca Mar 1866 Bot Co - d 23 June 1866 Bot Co - age 3m od - William MARTIN - m Lizzie C - cd not known - rep by father

MASEY see Bettie HINCHEE

MASON, _____ - d 10 Oct 1895 Bot Co - hus V Otis MASON; ch 3, not named - buried Copps cem - Cronise scrapbook 54 (no date)

MASON, Daniel - d by 8 Nov 1822 - Ref WB C p439, app - On 11 Oct 1824 orphan Eliza (age ca 7) - admr Philip SHARTZER

MASON, French - d by 10 Mar 1814 (dau called an orphan) - day Catherine (over 14)

MASON, James - d by May 1808 - f _____ MASON dec'd (James McKEACHEY, Ex) - ref WB B p183, will dated 2 Mar 1803 - bros William (dec'd of Ky), Joseph (of Ky) sis^s Janet (md Samuel CRAWFORD of Ky & had William, Samuel, Mason, Mary (md Edward PATE), Jane (md _____ PATE), Elinor (md _____ JENNINGS), Margaret, Sarah CRAWFORD); Mary MASON dec'd (md James E EDGAR of Bed Co); Margaret MASON (md Joseph SNODGRASS of Tn)

MASON, Jonathan - d by Mar 1822, marked out, & 20 Dec 1821 written above - ref WB C p347, app - adm^r Philip SWITZER

MASON, Martin - d by Dec 1794 (app WB A p383) - orphans Susanna, Sarah, Nancy, Martin & Abraham, all under 14 on 12 June 1798; John, Jonathan & Peggy, all over 14 by 8 Apr 1800; - On 16 June 1815 there were 5 others listed; William, Daniel, Catherine, Elizabeth & Mary, and saying the youngest had become 21 in Feb 1815

MATHENY, William T - b 24 Aug 1854 Bot Co - d 26 Aug 1854 - f Peachy MATHENY - m M - cd inflamation bladder - rep by father

MATHENY, Willie - b 1857 - d 1922 - grave St Jacob's Lutheran cem

MATTHEWS see Paulzer KIMBERLING

MATTHEWS, William - d by 10 Nov 1772 - ref WB A p19, will dated 23 July 1772, Admr bond - wife Frances; ch Ann, Elizabeth, John, Joseph, James; bros Samson, George - admr George MATTHEWS

MAURA (or MOYER, MYER), Conrad - d by Feb 1824 - Ref WB C p545, will dated 23 Oct 1809 - son Conrad (of Somerset Co, Pa), s-i-l Henry PAINTER

MAURY see MURRY

MAURY (or MURRY), Alice L - b Bot Co - d 29 Mar 1861 - f Barney MAURY - m Ellen M - cd Scarlet fever - rep by father

MAURY, John K - b ca 1830 Aug Co - d 5 May 1862 Williamsburg, Va - age 32y -
cd gun shot - rep by wife Elizabeth MAURY - adm Ferdinand WOLTZ (9 June 1862)

MAURY, Oliver Henry - d 28 Mar 1861 - f Barney MAURY - m Ellen M - cd
scarlet fever - rep by father

MAY see MAYS, male HARLOW

MAY, Richard - d by 14 Feb 1782 - Ref admr bond - admr Agnes MAY

MAYBERRY see Billie BANE

MAYO, Anna U - b ca 1850, Bot Co - d 1 Sep 1853 - f L W MAYO (doctor) - m
Frances - cd scarlet fever - rep by father

MAYS see MAY, Jacob HARMAN, Thomas REED, Mary A HUNTER, David WHITMORE,
Frances J FARROW, Mariah R HOGSHEAD, Mary J ANDERSON, Esterline BRUGH, Maria
F BRUGH, John CROSS, Mary DILL, Frank Edward KERN, Charlotte McCCLURE, James
McCCLURE, James McCCLURE, Abraham W PEERY, James WALLICE, Mary J ANDERSON, Dr
Cyrus DOGGETT, Fletcher M DOGGETT, Isabella E M DOGGETT, Mary MAYS DOGGETT,
Nellie M DOGGETT

MAYS, ___ - d by 6 Feb 1814 (dau called an orphan) - dau Mary

MAYS, Alberta V - b 8 Aug 1853 [Bot Co] - d 26 Oct 1938 Bot Co - f J[ohn H]
SHEETS - m M[ary] J - w/o Josephus MAYS - ref Shiloh Methodist gravestone

MAYS, David J - b 30 Nov 1860 Bot Co - d 14 July 1954 Bot Co - f Thomas MAYS
- m Mary A McCONNELL - h/o Mary E MAYS (1869-1924) - Ref Eagle Rock gravestone

MAYS, Elisha - d 1928 Bot Co Heir list (not copied)

MAYS, Ellen - b 23 Dec 1808 - d 23 Mar 1840 Bot Co - age 31y 3m - f [Joseph
FERGUSON] - m [Jane] - w/o Fletcher H MAYS (d 1894) - Ref Fincastle Presby
gravestone

MAYS, Ellen - b ca 1805 (census 1850 Bot Co #858) - d 1875 Bot Co (will) - f
[John CALLAHAN] [see my Shirkey file] - 1st hus George SHIRKEY, 2nd hus
James MAYS Jr - ch by 1st hus Oliver SHIRKEY, Margaret (md James CRAIG)

MAYS, Esther - d ca 1780 Va - d 1853 Bot Co (will) - f Thomas REID - hus
Matthew MAYS; ch Thomas R, Patsy R McCCLURE, Estiline, Susannah McCCLURE,
Harriet A PEERY (her son W^m M PEERY), Maria A HOGSHEAD, Frances J, Polly
R, John, Florence M

MAYS, Fletcher H - d ca 1894 Bot Co (settlement of estate) - 1st wife Ellen
FERGUSON, 2nd wife, Mrs Mary L (_____) EWIN 4 heirs, Belle M DOGGETT, O M
DOGGETT, R F MAYS, Mrs Mary S WILSON

MAYS, Fletcher Reid - b 17 Aug 1873 - d 18 Aug 1876 Bot Co - f R F MAYS [s/o
Fletcher H] - m E D - grave Mill Creek Cem

MAYS, Florence M (single) - b ca 1799 Bot Co (or 1801, census #1226) - d 31
Aug 1855 Bot Co, Death & will book - f Martha (Matthew) MAYS - m Florence
[circled, written in Esther REID] - cd Bylias complaint - rep by bro John
MAYS - Ex Joseph McCCLURE

MAYS, Frances Jane (single) - b ca 1835 Bot Co - d 8 June 1853 Bot Co Death bk - age 18y - f Fletcher H MAYS - m Ellen - rep by father - Ref Fincastle Presby gravestone; death bk

MAYS, James - b ca 1821 - d by 21 Aug 1850 Bot Co (adm appointed) - f ?? Ballenger MAYSE - m ?? Mary WRIGHT - admr William MAYS (bro ?)

MAYS, James - b ca 1805 Va (census #980) - d by 12 May 1862 Bot Co (adm appointed) - f James MAYS - m Mary REID - wife Mrs Ellen (____) SHIRKEY; ch Walter - adm Walter L MAYS

MAYS, James - b ca 1763 Pa (census #277) - d 24? July 1853 Bot Co (Death & Will Bk) - age 89y 11m 4d - f John MAYS - m Mary REID - cd old age - rep by son William MAYS - Ref Death bk; Will bk (will) - wife Mary & her father Thomas REID & ch John R; James (his son Walter), Thomas, Florence Ann, Joseph R, Robert; gs John D MARTIN - Ex John R & Joseph R MAYS (11 July 1853)

MAYS, James David, Rev - b 1853 (# written over) - d 1929 Bot Co Heir List - f Robert MAYS - m Lovinia WHITMER - Relatives: nieces & nephews Homer P FLAHERTY (b ca 1872); Arthur FLAHERTY (b ca 1888); R M FLAHERTY (b ca 1881); Anna HUNTER (b ca 1878); Blanche PULLEN (b ca 1884); Bertha M LEGG (b ca 1875) - [buried Meth-Epis Cem, Eagle Rock, Va]

MAYS, John - b ca 1806 - d 2 May 1878 Bot Co Death paper & will bk - f Matthews MAYS - m Esther REID - wife Agnes J REID; ch Mary Rowland COFFER, Henry R, John W, Joseph R

MAYS, John Harrison - d ca 1919 Bot Co (will) - f Joseph R MAYS - m Letitia B KERN - relatives: to the heirs of [uncle] John W MAYS

MAYS, John T - b 18 Dec 1834 - d 9 Sep 1909 Bot Co - f John R MAYS - m "Polly" R TATE - Ref Shiloh Methodist gravestone

MAYS, Joseph R - b ca 1812 Va (census #275) - d 7 Aug 1866 Bot Co - age 54y - f James MAYS - m Mary [REID] - [1st wife Virginia LINDSEY, 2nd wife Pauline BISHOP] - rep by bro Thomas MAYS - Adm 10 Sep 1866 Thomas L MAYS

MAYS, Josephus - b ca 1845 - d 19 July 1882 Bot Co (assigned dower) - f John R MAYS - m Mary R TATE - wife Alberta V SHEETS

MAYS, Lavinia - b 8 July 1823 - d 22 June 1892 - f [David WHITMER] - 2nd w/o Robert MAYS - Ref Old Shiloh gravestone (on #43) Allen Carper cem, near ruins old Allen house)

MAYS, Letitia Belle - b ca 1867 - d 1947 Bot Co Heir list - f N H KERN - m S J - Relatives: sis Ada L MAYS (b ca 1868); bros (all KERNS) & many nieces & nephews - hus Joseph R MAYS

MAYS, Mary - d by May 1822 Bot Co (will) - Ref WB C p357, will dated 11 Sep 1820 - ch Susannah (md ____ TATE); Mary (md [John] CROSS); James - [w/o John MAYS]

MAYS, Mary E - b 12 Sep 1869 - d 12 Aug 1924 - f W B FINNEY - m S E - w/o David J MAYS (1860-1954) - Ref Eagle Rock gravestone



Roanoke City Public Library
Virginia Room

MAYS, Mary L [JONES] Ewing - b ca 1818 - d 1865 - f [William JONES] - w/o #1 Daniel P EWING, #2 Fletcher H MAYS - grave Fincastle Presby cem

MAYS, Mary R - b ca 1800 - d 29 Dec 1865 - f John TATE - m Susan - hus John R McClure

MAYS, Mary R (unmd) - b 3 July 1802 - d 11 Dec 1884 Bot Co (death papers) - f Matthew MAYS - m Esther (REID) MAYS - sis Maria HOGSHEAD - ref Amsterdam gravestone

MAYS, Mary Susan - b ca Oct 1859 - d 11 Mar 1860 - age 5m 21d - f Alfred B MAYS - m May J - cd burned - rep by father

MAYS, Matthew - d ca 1841 Bot Co (app) - f John MAYS - m Mary - wife Esther REID

MAYS, Matthew B - b ca 1835 Bot Co - d ca 1908 Bot Co (will) - f Thomas R MAYS - m Elizabeth HOGSHEAD - wife Sallie McCLELLAN; ch James E, Alice (md C W KERN); Sallie S (md Tinsley GULLEY); Thomas R

MAYS, Robert - b ca 1823 Va (census #462) - d by 15 Feb 1853 Bot Co (adm bond) - f James MAYS - m Mary REID -h/o Lavinia WHITMER - adm Joseph R MAYS

MAYS, Thomas (unmd) - b ca 1799 - d 10 May 1876 Bot Co; will & death papers - age 77y -f James MAYS - m Mary REID - Ref Saltpeter Cave gravestone - bro John R; sis Florence A HUNTER; nephews Thomas L & Walter L MAYS - nieces Ann Eliza RUDESILL, Mary Ellen HUNTER

MAYS, Thomas L - b ca 1843 - d 1876 Bot Co (app) - f Joseph R MAYS - m Virginia LINDSEY - wife Catherine "Kitty" J BURKS

MAYS, Thomas R - b ca 1807 (census 1850 Bot Co #700) - d 1876 Bot Co (will) - f Matthew MAYS - m Esther REID - wife Elizabeth HOGSHEAD; ch Matthew B (his dau Mary A); Mary Ann REES; Easter R WILLIAMS; Letitia F DRISCOLL; gdau Minerva D M or U (now Minerva PRILTZ)

MAYS (or MAZE), William Sr - d by Mar 1783 Bot Co will - f James MAYS - ref WB A p169, will dated 1 Oct 1781 - wife Margaret; ch William, Richard, Sarah (md ___ McMURRAY); Mary (md [William] SCOTT)

MEAD see male FERRELL

MEAD, Charles Lewis - b 13 Apr 1896 Va - d 15 Nov 1916 - f Henry MEAD (b Va) - m Mary (BICE) (b Va) - buried Hollins, Va cem - cd lobar pneumonia

MEADOWS, Josiah - d by 8 Jan 1793 - ref admr bond - admr Josiah MEADOWS

MEASILS?? see John HAYS

MEDLEY see Mary Jane RULE

MEDLEY, Humphrey - d 1868 - adm bond 14 Sep 1868, Sheriff LINKENHOKER

MEDLEY, James W - b ca 1787 Charlotte Co, Va - d 3 Dec 1867 - age 80y - f William MEDLEY - cd paralyzed - rep by wife Nancy MEDLEY - Ex 13 Jan 1868 Charles VANDERGRIFT

MEDLEY, William (colored) - d by 23 June 1927 - cd natural causes - ref Inquest papers

MEEKINS, Malinda - b ca 1829 Bot Co - d 18 Dec 1869 - age 40y - rep by hus Arthur MEEKINS

MEEKS, Wilbur Ramond - b 2 Dec 1912 - d 28 Aug 1913 - p^S from Orphan's house in Richmond - buried Glen Wilton cem - cd cholera infantum

MEFFORD see MIFFORD

MELLON see Nathan SCOTT

MENGA ?? see Philip LOOP

MEREDITH, Henry - b ca 1860 Bot Co - d 2 Aug 1862 - age 0y 16m 0d - f Samuel MEREDITH - m Sarah - cd dysentary - rep by father

MERRITT see Mary J MYERS, Eliza A ALDERSON, Daniel CAMPBELL, Gussie Pearl STULL

MERRITT, Catherin - b ca 1825 - d 23 Nov 1856 - f William AUSTIN - m Sarah [CUSTER] - cd typhoid fever - rep by sis Margaret AUSTIN - w/o Thomas C MERRITT

MERRITT, Christina - b 25 Feb 1820 Bot Co - d 24 Jan 1916 - f John BARGER (b Rb Co) - m Christina (WILHELM) (b Rb Co) - buried Sizer Cem - cd old age & LaGrippe

MERRITT, Clarissa - b ca 1845 Bot Co - d 20 July 1861 - age 16y - m Mary MERRITT - typhoid fever - rep by gm Polly MERRITT

MERRITT, Henry - b ca Mar 1853 Bot Co - d 20 Aug 1861 - age 8y 5m - f Thomas C MERRITT - cd diptheria - rep by father

MERRITT, James M - b ca 1839 Va (census #1646) - d by 12 May 1852 - f Samuel MERRITT - m Susan - adm Samuel MERRITT

MERRITT, John - b ca 1784 Bed Co - d 26 Sep 1854 - cd rheumetism - rep by wife Sarah MERRITT

MERRITT, John M (unmd) - b ca Aug 1839 Bot Co - d 2 Oct 1861 Fairfax Co - age 22y 2m - f Samuel MERRITT - m Susan - cd hemorrhage - rep by mother

MERRIT, John William - b Mar 1853 Bot Co - d 25 Apr 1853 - f Thomas C MERRITT - m Catherine - cd pneumonia - rep by father

MERRETT, Samuel - b ca 1757 - d 17 Oct 1820 (orphans to be bound, 7 Apr 1821) - ref WB C p334, app - on 7 Apr 1821 Orphans Daniel & Patterson - [Note: mentions pension money due the state. See 1835 Pension Roll, Va section, p44

MERRITT, Samuel B - b ca 1854 Bot Co - d 5 Dec 1856 - f Thomas C MERRITT - m Catherin - cd typhoid fever - rep by aunt Margaret AUSTIN

METTS see Elizabeth ADAMS, George W ADAMS

MICHEL, Rose - b ca Mar 1861 Bot Co - d June 1861 - age 0y 3m 0d - f J D
MICHEL - m Sarah - cd cold - rep by mother

MIDDLETON, Juliett B - b ca 1840 - d 21 June 1862 - age 21y 11m 8d - cd
typhoid fever - rep by hus Henry C MIDDLETON

MIFFORD see Nicholas HAYNES

MIFFORD, Jacob - d by June 1798 - ref WB A p473, will dated 9 Apr 1798 - wife
Peggy; Ch Elizabeth (___ NUGENT); Polly, John, Jacob, Catherine, Peggy,
Pricilla - On 13 Apr 1802 orphan John was over 14

MILER, Thomas - d by 11 Aug 1845 (dau called an orphan) - dau Ann Eliza
(over 14)

MILLER see Frances A ROSS, Ciger MARTIN, Ann S BLUNT, Maggie S LIPES, Hugh
ALLEN, Leah ETZLER, John FIREBAUGH, Mary FIREBAUGH, Philip FIREBAUGH, Philip
M FIREBAUGH, William M FIREBAUGH, Virginia Hester SWARTZ, Loise Mildred SWATTS

MILLER, Clyde Maxwell - b 22 Jan 1913 Glen Wilton, Bot Co - d 24 Jan 1913 -
f Middleton MILLER (b Media, Pa) - m Eva Clyde (WOOD) (b Glen Wilton) -
buried family plot - cd heart failure

MILLER, C P - b 3 May 1829 Va - d 14 Feb 1915 - f John P MILLER (b Va) -
buried High Bridge cem - cd paralphlegia

MILLER, David - d by Apr 1808 [see Aug Co, Va, death cards] - ref WB B p192,
196, 266, app & division - wife Hannah (her dower); Ch 3, not named - wife
Hannah md #2 ___ Boyd - adm^x Hannah MILLER 1811

MILLER, Elizabeth S - b ca 1804 Surry Co, Va - d 1 June 1857 - cd paralises
- rep by hus Fleming B MILLER

MILLER, Fannie A - b ca 1857 Bot Co - d 2 Mar 1865 - age 8y 3m - f Jacob S
MILLER - m Mary - cd brain fever - rep by father

MILLER, James - d 20 June 1866 - cd hung himself - Ref Inquest papers - adm
10 Sep 1866 Jacob G SPERRY

MILLER, James A - b 1831 Rb Co - d 24 Feb 1913 Bot Co - f Andrew MILLER (b
Rb Co) - m (? ORRVERSOLT ??) (b Rb Co) - buried Colland Cem - cd LaGrippe

MILLER, John J - b ca 1795 NY (census #615) - d by 14 Oct 1850 - adm Isaac A
MILLER

MILLER, Lillian Gertrude - b 24 Feb 1890 Bot Co - d 23 Feb 1917 - f John
MILLER (b Germany) - m Mary C (FISHER) (b Fkln Co) - buried Bethesda - cd
bronchal pneumonia

MILLER, Mary A - b 18 June 1869 - d 21 May 1900 - ref Allen-Carper (near
ruins old Allen house)

MILLER, Nancy Jane - b ca 1829 Rb Co - d 14 Nov 1857 - f George LEMON - m Ann
- cd fever - rep by hus Sam. MILLER

- MILLER, Permalie - d by 9 mar 1868 - Ex 9 Mar 1868 Henry C MILLER
- MILLER, Rachael - b ca 1790 - d 3 Oct 1853 - cd dropsy - w/o William MILLER
- MILLER, Randal - b ca 1845 Bot Co - d 2 May 1868 - age 23y - f Anderson
MILLER - m Nancy - cd pneumonia - rep by wife M MILLER
- MILLER, Thomas, Dr - b 24 Oct 1837 Turnstall, Suffolk, England - d 29 May
1916 Bot Co - f William MILLER (b Boyton, Suffolk Eng) - m Elizabeth (ABBITT)
(b Lavnshaw, Suffolk, Eng) - buried Fincastle Cem - cd heart failure
- MILLER, William - d by 18 Feb 1786 - ref Admr bond - admr Ad SMITH
- MILLIRONS, _____ - d by 13 Aug 1801 (son called an orphan) - son Henry
- MILLNER, Robert - d by 8 Sep 1845 (son called an orphan) - son Robert (over 14)
- MILLS see Albert L KING
- MILLS, Hugh - d by 10 May 1785 - Ref WB A p225, will dated 25 Mar 1785, Admr
bond - bros Blaney, John; nephew Hugh MILLS (of John) - admr Blaney MILLS, D
MAY
- MILLS, John - d by 12 Apr 1781 - ref WB A p149, app, admr bond - admr John
MILLS
- MILTON see Samuel NOFSINGER
- MILTON, Frederick - b 19 Feb 1914 Bot Co - d 3 Aug 1914 - f William MILTON
(b Bed Co) - m Minnie (COOK) (b Bot Co) - buried Glade Creek Cem - cd
cholera infantum
- MILTON, Madaline Dematus - b 27 Oct 1911 (b Bot Co) - d 29 Oct 1912 - f Allen
G MILTON (b All Co) - m Pearl M (GIVENS) (b Craig Co) - buried Andrew's Chap-
el cem - cd spinal menengitis
- MILTON, William H - b 13 Jan 1854 Craig Co - d 30 May 1913 - f Pleasant MIL-
TON (b Va) - m Mary (SIZER) (b Va) - buried Mill Creek Cem - cd heart
- MINEELY or MINEALY see Alexander WALKER
- MINGES see George RONK
- MINNICK see Christiana HAYMAKER, Isaac Newton HAYMAKER
- MINNICH, C A - b 22 Dec 1826 - d 26 Oct 1911 - h/o #1 Catherine S, #2
Martha A - grave Amsterdam cem
- MINNICK, Catherine - b ca 1844 Bot Co ?? or 1800 census #871 - 25 Feb 1862 -
age 18y ???? - f [John MINNICH] - cd typhoid fever - rep by b-i-1 Buford T
MURPHY - Ref WB K p630, will dated 25 Oct 1853, probated May 1862, names sis
Elizabeth MURPHY & their 3 ch - Ex Buford T MURPHY (11 Aug 1862)
- MINNICH, Catherine S - b ca 1837 - d 21 Oct 1887 - age 50y - w/o C A MINNICH
- grave Amsterdam cem

MICHEL, Rose - b ca Mar 1861 Bot Co - d June 1861 - age 0y 3m 0d - f J D
MICHEL - m Sarah - cd cold - rep by mother

MIDDLETON, Juliett B - b ca 1840 - d 21 June 1862 - age 21y 11m 8d - cd
typhoid fever - rep by hus Henry C MIDDLETON

MIFFORD see Nicholas HAYNES

MIFFORD, Jacob - d by June 1798 - ref WB A p473, will dated 9 Apr 1798 - wife
Peggy; Ch Elizabeth (___ NUGENT); Polly, John, Jacob, Catherine, Peggy,
Pricilla - On 13 Apr 1802 orphan John was over 14

MILER, Thomas - d by 11 Aug 1845 (dau called an orphan) - dau Ann Eliza
(over 14)

MILLER see Frances A ROSS, Ciger MARTIN, Ann S BLUNT, Maggie S LIPES, Hugh
ALLEN, Leah ETZLER, John FIREBAUGH, Mary FIREBAUGH, Philip FIREBAUGH, Philip
M FIREBAUGH, William M FIREBAUGH, Virginia Hester SWARTZ, Loise Mildred SWATTS

MILLER, Clyde Maxwell - b 22 Jan 1913 Glen Wilton, Bot Co - d 24 Jan 1913 -
f Middleton MILLER (b Media, Pa) - m Eva Clyde (WOOD) (b Glen Wilton) -
buried family plot - cd heart failure

MILLER, C P - b 3 May 1829 Va - d 14 Feb 1915 - f John P MILLER (b Va) -
buried High Bridge cem - cd paralphlegia

MILLER, David - d by Apr 1808 [see Aug Co, Va, death cards] - ref WB B p192,
196, 266, app & division - wife Hannah (her dower); Ch 3, not named - wife
Hannah md #2 ___ Boyd - adm^x Hannah MILLER 1811

MILLER, Elizabeth S - b ca 1804 Surry Co, Va - d 1 June 1857 - cd paralises
- rep by hus Fleming B MILLER

MILLER, Fannie A - b ca 1857 Bot Co - d 2 Mar 1865 - age 8y 3m - f Jacob S
MILLER - m Mary - cd brain fever - rep by father

MILLER, James - d 20 June 1866 - cd hung himself - Ref Inquest papers - adm
10 Sep 1866 Jacob G SPERRY

MILLER, James A - b 1831 Rb Co - d 24 Feb 1913 Bot Co - f Andrew MILLER (b
Rb Co) - m (? ORRVERSOLT ??) (b Rb Co) - buried Colland Cem - cd LaGrippe

MILLER, John J - b ca 1795 NY (census #615) - d by 14 Oct 1850 - adm Isaac A
MILLER

MILLER, Lillian Gertrude - b 24 Feb 1890 Bot Co - d 23 Feb 1917 - f John
MILLER (b Germany) - m Mary C (FISHER) (b Fkln Co) - buried Bethesda - cd
bronchal pneumonia

MILLER, Mary A - b 18 June 1869 - d 21 May 1900 - ref Allen-Carper (near
ruins old Allen house)

MILLER, Nancy Jane - b ca 1829 Rb Co - d 14 Nov 1857 - f George LEMON - m Ann
- cd fever - rep by hus Sam. MILLER

MILLER, Permalie - d by 9 mar 1868 - Ex 9 Mar 1868 Henry C MILLER

MILLER, Rachael - b ca 1790 - d 3 Oct 1853 - cd dropsy - w/o William MILLER

MILLER, Randal - b ca 1845 Bot Co - d 2 May 1868 - age 23y - f Anderson
MILLER - m Nancy - cd pneumonia - rep by wife M MILLER

MILLER, Thomas, Dr - b 24 Oct 1837 Turnstall, Suffolk, England - d 29 May
1916 Bot Co - f William MILLER (b Boyton, Suffolk Eng) - m Elizabeth (ABBITT)
(b Lavnshaw, Suffolk, Eng) - buried Fincastle Cem - cd heart failure

MILLER, William - d by 18 Feb 1786 - ref Admr bond - admr Ad SMITH

MILLIRONS, _____ - d by 13 Aug 1801 (son called an orphan) - son Henry

MILLNER, Robert - d by 8 Sep 1845 (son called an orphan) - son Robert (over 14)

MILLS see Albert L KING

MILLS, Hugh - d by 10 May 1785 - Ref WB A p225, will dated 25 Mar 1785, Admr
bond - bros Blaney, John; nephew Hugh MILLS (of John) - admr Blaney MILLS, D
MAY

MILLS, John - d by 12 Apr 1781 - ref WB A pl49, app, admr bond - admr John
MILLS

MILTON see Samuel NOFSINGER

MILTON, Frederick - b 19 Feb 1914 Bot Co - d 3 Aug 1914 - f William MILTON
(b Bed Co) - m Minnie (COOK) (b Bot Co) - buried Glade Creek Cem - cd
cholera infantum

MILTON, Madaline Dematus - b 27 Oct 1911 (b Bot Co) - d 29 Oct 1912 - f Allen
G MILTON (b All Co) - m Pearl M (GIVENS) (b Craig Co) - buried Andrew's Chap-
el cem - cd spinal meningitis

MILTON, William H - b 13 Jan 1854 Craig Co - d 30 May 1913 - f Pleasant MIL-
TON (b Va) - m Mary (SIZER) (b Va) - buried Mill Creek Cem - cd heart

MINEELY or MINEALY see Alexander WALKER

MINGES see George RONK

MINNICK see Christiana HAYMAKER, Isaac Newton HAYMAKER

MINNICH, C A - b 22 Dec 1826 - d 26 Oct 1911 - h/o #1 Catherine S, #2
Martha A - grave Amsterdam cem

MINNICK, Catherine - b ca 1844 Bot Co ?? or 1800 census #871 - 25 Feb 1862 -
age 18y ???? - f [John MINNICH] - cd typhoid fever - rep by b-i-1 Buford T
MURPHY - Ref WB K p630, will dated 25 Oct 1853, probated May 1862, names sis
Elizabeth MURPHY & their 3 ch - Ex Buford T MURPHY (11 Aug 1862)

MINNICH, Catherine S - b ca 1837 - d 21 Oct 1887 - age 50y - w/o C A MINNICH
- grave Amsterdam cem

MINNICH, Caty (unmd) - d by 10 May 1825 (son called an orphan) - illegitimate son, Henry COLDRITER

MINNICH, Isaac W - b ca 1822 Bot Co - d 17 May 1869 - age 47y - f Michael MINNICH - m Rebecca - cd sore leg - rep by bro James MINNICH - h/o Catherine MINNICH

MINNICH, Martha A - b ca 1831 - d 6 May 1900 - age 69y - w/o C A MINNICH - grave Amsterdam cem

MINNICK, Sarah L - b ca 1846 Bot Co - d 5 Aug 1862 - age 16y 0m 13d - f Isaac W MINNICK - m Catherine - cd typhoid fever - rep by father

MINNIX, Ezekiel - b 28 July 1916 - d 28 July 1916 - f Kyle Griffin MINNIX (b Rke Co) - m Willie Ann (WARD) (b Fr Co) - buried on farm - cd born dead

MINTER, Susan (widow) - b ca 1772 - d 16 Dec 1857 Poor house - rep by Steward

MITCHELL see MICHEL, Luke PRYOR, Mary Frances Elizabeth RIDER, Goldie Alice STAPLE

MITCHELL, ___ - d by 11 Feb 1817 (son called an orphan) - son John

MITCHELL, David - d by 11 Dec 1787 (app ordered) - m Martha - ref WB A p259, app & admr bond - admr James MITCHELL, John Tate

MITCHEL, Henry - b ca Jan 1856 Bot Co - d 21 Apr 1858 - age 2y 0m 23d - f James MITCHEL - m [Sarah J] - cd not known - rep by father

MITCHELL, John W - b ca 1837 Rb Co - d 27 Feb 1856 - f Henry MITCHELL - m Mary - cd consumption - rep by father

MITCHELL, Virginia B HARVEY - b & d no dates - age 37y - f Matthew HARVEY - m Magdaline - w/o Col Thomas B MITCHELL - Ref Fincastle Presby gravestone - was youngest dau of Matthew & Magdaline

MOELICK, James G (widower) - b ca 1810 Ireland - d 1 Apr 1864 Buchanan - age 54y - cd not known - rep by son T M MOELICK - adm T M MOELICK (11 Apr 1864)

MOELICK, Mary J - b ca 1819 Ireland - d 30 Nov 1862 Buchanan - age 43y - f Thomas MACKIE - cd fever - rep by hus James B MOELICK

MOFETT see Martha ROBINSON

MOLER see Elizabeth RULY

MOLICK, William A - b ca 1854 Buchanan - d 12 Feb 1861 Buchanan - age 7y - f J B MOLICK - m Mary - cd fever - rep by father

MONDAY see MUNDAY

MONTGOMERY, Charles - b ca 1869 Bot Co - d 18 Mar 1870 Buchanan Precinct - age 6m 0d - f Henry MONTGOMERY - m Rebecca - rep by father

MONTGOMERY, Hazel Dorine - b 24 Apr 1916 Eagle Rock - d 26 Aug 1916 - f W C MONTGOMERY (b Bot Co) - m Carlina (TEAFORD) (b Bot Co) - buried Eagle Rock Cem - cd malnutrition

MONTGOMERY, Hugh A - b ca 1853 Bot Co - d 8 Nov 1853 - f William MONTGOMERY - m S - cd scarlet fever - rep by father

MONTGOMERY, John - b ca 1855 Bot Co - d 8 Oct 1861 - age 6y - f Samuel MONTGOMERY - m Lucy - cd diptheria - rep by father

MONTGOMERY, Samuel - d by 22 Nov 1774 - ref WB A p74, app & admr bond - On 12 May 1784 orphan Janice named - admr Sarah MONTGOMERY, Thomas DIXON

MOODY see Jacob NININGER

MOODY, male - b 10 Oct 1856 Bot Co - d 11 Oct 1856 - f Joseph MOODY - m Sarah - cd not known - rep by father

MONFORD see John M SLOANN

MOOMAW see Barbara PETERS, Catherine CROUSE, Tonie BECKNER, Theodore E DENTON, Benton D PAINTER, William Austin PETERS, Minerva Moomaw THOMAS, William E THOMAS

MOOMAW, Alvin Russell - b 25 Apr 1905 - d 22 May 1905 Bot Co - f Elmer C MOOMAW - m Emma R - Marna cem [[?Moomaw cem]]

MOOMAW, Ann - b ca 1807 Bot Co - d 26 Dec 1862 - age 55y - f [Jacob GISH] - m [Anna WINGAT] - cd heart disease - rep by son Rufus MOOMAW - w/o [Samuel MOOMAW] - buried Daleville Cem - adm 11 Feb 1867 Sheriff LEWIS LINKENHOKER

MOOMAW, Ann Elizabeth (single) - b ca 1850 Bot Co - d 16 Oct 1853 Bot Co - age 3y - f Benjamin F MOOMAW - m Mary A [CROUSE] - cd scarlet fever - rep by mother - [Moomaw cem]

MOOMAW, Annie L - b 23 Feb 1863 - d 10 June 1888 Bot Co - f Henry SLUSSER - m H - w/o Simon J MOOMAW - ref Daleville gravestone

MOOMAW, Annie Maria - b 1 June 1856 - d 6 Sep 1862 Bot Co - age 6y 3m 5d - Moomaw Cem

MOOMAW, Benjamin F - b 30 Mar 1814 - d 6 Nov 1900 Bot Co - f Christian MOOMAW - m Catherine SNIDER - h/o Mary A MOOMAW (1816-1887) - ref Moomaw grave stone

MOOMAW, Catherine (widow) - b 14 Mar 1775 Bot Co - d 5 May 1864 Bot Co Death bk - age 89y 1m 21d - f Peter SNIDER - m Susan - cd old age - rep by son Joseph MOOMAW - ref death bk; Daleville gravestone - hus Christian MOOMAW

MOOMAW, Christian - d by 10 Mar 1812 (dau[?] called an orphan[?] Bot Co) [[do not know why the question marks]] - dau Catherine (over 14) - wife [Eliza "Betsy" HOWPE]

- MOOMAW, Christian - b 16 Dec 1774 [Lancaster Co, Pa] - d 8 oct 1847 Bot Co (will) (Daleville cem gravestone) - age 72y 9m 22d - f [John MOOMAW (b Pa)] - m [Ann Barbara] - wife Catherine SNIDER; ch Joseph, Ann, Christian H, Elizabeth (md W^m King); Samuel, Benjamin F, Barbara (md Jacob PETERS); Susannah (md John TRUCCELL); Catherine (md Abram STOVER); & son Samuel's ch Catherine Salome, Pauline Cassandra, Elizabeth Ann & Rufus
- MOOMAW, Delia - b 1881 - d 11 Nov 1881 - age infant - f Jos C MOOMAW - m M A - Moomaw cem
- MOOMAW, Edward J - b ca 1848 Bot Co - d 20 June 1859 Bot Co Death bk - age lly - f Joseph MOOMAW - m Mary - cd unkn - rep by father
- MOOMAW, Edward Newton - b 2 Feb 1859 - d 25 Sep 1862 Bot Co - age 3y 7m 23d
- MOOMAW, George Algilee - b ca 1869 - d 1946 Bot Co Heir List (WB 10 p48) - f Rufus S MOOMAW - m Mary M BOOZE - [1st wife Dove LAYMAN] [2d] wife Bessie C SMITH (b ca 1891); heirs, Lelia BRILLHART (b ca 1892); Katie NUCKOLLS (b ca 1898); Ralph (b ca 1901); Algilee (b ca 1928)
- MOOMAW, Honoria E - b 12 Mar 1843 - d 11 June 1900 Bot Co - age 57y 2m 19d - f BOWMAN - 2nd w/o John C MOOMAW (1838-1886) - ref Moomaw gravestone
- MOOMAW, Iona Ann - b 15 June 1873 - d 3 Nov 1876 Bot Co - f W^m) P MOOMAW - m Lucinda
- MOOMAW, J Lucian - b 22 Aug 1871 Cloverdale, Bot Co - d 30 Mar 1914 Bot Co (family cem) (will) - f John Crouse MOOMAW - m Honoria E BOWMAN - wife Lottie E
- MOOMAW, John Crouse - b 1838 - d 16 Aug 1886 Bot Co (app) - age 48y - f Benjamin MOOMAW - m Mary A CROUSE - h/o #1 Virginia GRAYBILL (d 1865); #2 Honoria BOWMAN (d 1900) - ref Moomaw cem gravestone
- MOOMAW, Joseph - b 23 May 1816 - d 21 Apr 1894 Bot Co (app) - age 77y 10m 28d - f Christian MOOMAW - m Catherine SNIDER - h/o Mary STOVER (d 1888) - ref Daleville gravestone
- MOOMAW, Lucinda N - b 10 June 1846 - d 18 Mar 1934 Bot Ave - hus W^m Price MOOMAW: son W^m A MOOMAW, dau Mary Maggie MOOMAW - Moomaw Cem
- MOOMAW, Mary - b 30 Sep 1819 - d 20 Sep 1888 Bot Co - age 68y 11m 20d - f John STOVER - m Caty SNIDER - w/o Joseph MOOMAW (d 1894) - ref Daleville gravestone
- MOOMAW, Mary Ann - b 1816 - d 15 Apr 1887 Bot Co - age 71y - f Daniel CROUSE - m Catherine - w/o Benjamin F MOOMAW (1814-1900) - ref Moomaw gravestone
- MOOMAW, Mary C, Dr - b 1 Feb 1861 - d 5 Feb 1957 Bot Co - f John C MOOMAW - m Virginia - Moomaw cem
- MOOMAW, Mary Catherine - b ca 1834 - d 28 or 22 Oct 1837 Bot Co - age 3y 5m - f Christian MOOMAW - m Frances A NOFFSINGER - Daleville gravestone
- MOOMAW, Mary M - b 9 June 1839 - d Apr 1882 Bot Co - hus Rufus S MOOMAW, son Weber L MOOMAN - Fairview Cem, Buchanan, Va

OOMAW, Mathew Henry (single) - b ca 1851 Bot Co - d 14 Oct or Apr 1855 (Bot Co Death Bk) - age 4y 0m 29d - f Joseph MOOMAW - m Mary STOVER - cd croup - rep by father - ref Daleville gravestone, Death bk

MOOMAW, Nathan Rufus - b ca 1870/1 Bot Co - d 1948 Bot Co Heir list (WB 10 p 129) - f Rufus S MOOMAW - m Mary M BOOZE - wife Emma HOUSER (b ca 1879); Ch N R (b ca 1902); Annie PAGE (b ca 1904); Louise PAGE (b ca 1905); William Albert (b ca 1908); Kenton Benjamin (b ca 1911); Otho Anthony (b ca 1913); Margaret (b ca 1922)

MOOMAW, Rufus S - b 7 Oct 1840 - d 22 Feb 1900 Bot Co - f Samuel MOOMAW - m Ann GISH - wife Mary M BOOZE; son Weber L MOOMAW - Fairview cem, Buchanan

MOOMAW, Samuel - b ca 1800 Va (census #1666) - d 7 Nov 1852 Bot Co - age 52y - f Christian MOOMAW - m Catherine SNIDER - h/o Anna GISH - ref Daleville cem - adm Ann MOOMAW; Adm 8 Oct 1866 Sheriff Lewis LINKENHOKER

MOOMAW, Virginia - b 10 Mar 1838 - d 3 Oct 1865 - age 27y 6m 23d - f Joseph GRAYBILL - m Mary SNIDER - hus John Crouse MOOMAW - Moomaw cem

MOOMAW, William Price - b 11 Oct 1841 - d 30 May 1900 Bot Co - f Benjamin F MOOMAW - m Mary Ann CROUSE - wife Lucinda N; son W^m A MOOMAW, dau Mary Maggie MOOMAW - Moomaw cem

MOORE see Joseph RHODES, Margaret LINKENHOKER, Peter HINER, Hugh ALLEN, Hugh BROWN, Joseph WOODS, Rucker Bell BURKHOLDER, Demaris Barbara ETZLER, John Lewis ETZLER, Mary Elizabeth ETZLER, W T FRINGER, John GRAY, Sarah Bright Moore GRAY, George W OBENSHAIN, Joseph RHODES

MOORE, Daniel - b 1783 [maybe 1763?] - d 1835 - [other relatives, maybe md Martha BARNETT, Aug Co 17 Feb 1893 (sic - maybe 1783 or '93)] - ref Mt Union gravestone [not in cemetery bk]

MOORE, Grace J[ane] (single) - b Va - d Apr 1850 - age 24y - f [William HAYS] - cd consumption - ref 1850 Bot Co Mort Schedule - [hus William MOORE, md #2 10 Apr 1856 Sarah GISH]

MOORE, Henry - d by Dec 1822 - ref WB C p 372, will dated 7 Nov 1822 - wife Elizabeth; Ch John, William, Elizabeth

MOORE, James - d by Aug 1780 - ref WB A pl20, will dated 13 Sep 1776 - ch James, John, Martha (md _____ RALSTON marked out & Thomas ALDERSON written above); Jean (md Samuel McCLANAHAN)

MOORE, Jane (single) - b Va - d Apr 1850 - age 25 - cd consumption - ref 1850 Bot Co Mort Schedule

MOORE, John - b ca 1754 - d Apr 1838 - age 84 - h/o Mary Bright MOORE (d 1837) - grave Fincastle Presby Cem

MOOR(E), Livingston - b ca 1834 Bot Co - d 1 Sep 1855 - f Jacob G MOOR - m Elizabeth - cd typhoid fever - rep by father

MOORE, Mary Bright - b ca 1765 - d Sep 1837 - age 72y - w/o John MOORE (d 1838)- grave Fincastle Presbyterian cem

MOORE, Stephen - d by Apr 1811 - ref WB B p258, app - [wife Catherine; ch John, Nicholas, James, Stephen, Anne (md Henry SMITH); DB 11 p25, all survivors were in Madison Co, Ohio in 1812]

MOORE, Thomas - b ca 1770 (census #778) - d by 14 Apr 1851 - wife Martha WOODS - Ex Joseph MOORE

MOORE, Tilford J (CSA) - b 28 Dec 1828 - d 30 Dec 1877 - f Jacob G MOORE - m Elizabeth COON - grave Mill Creek Cem - [h/o Hester M]

MOORE, William - d by 25 Dec 1804 - f Stephen MOORE - m Catherine - ref WB B p 123, 208, 2 app^s - wife Elizabeth PATTERSON

MORAN, Ada - b 21 Feb 1913 Bot Co - d 6 Mar 1917 - f W D MORAN (b Floyd Co) - m Rosa L (CONNER) (b Patrick Co) - buried Daleville Cem - cd lobar pneumonia & calambal croup

MORGAN see Charles A FRANCIS

MORGAN, female - b 20 June 1916 Bot Co - d 20 June 1916 - f William MORGAN (b Bot Co) - m Clarinse (CRAWFORD) (b Bot Co) - buried Cove Alum cem - cd still born

MORGAN, Hammond Grabill - b 5 May 1913 Troutville, Bot Co - d 5 May 1913 - f W E MORGAN (b Hollins, Rke Co) - m Clarice (McCRAWFORD) (b Bot Co) - buried Mt Union Cem - cd died at birth

MORGAN, Hazel Pauline - b 4 July 1913 Bot Co - d 10 July 1913 - f Joe E WOMACK (b Bot Co) - m Birtie W MORGAN (b Fkln Co) p^s unmd - buried Mt Union cem - cd feeble from birth

MORGAN, Henry E - b ca 1812 NY City - d 8 Oct 1868 - age 56y - cd flux - rep by son G W MORGAN - h/o Mary MORGAN - admr bond 8 Feb 1869 Sheriff LINKENHOKER

MORISON see MORRISON, Benjamin DOUGLAS Sr

MORRIS see Adaline POOL, Samuel BALDWIN, Joseph W ANDERSON

MORRIS, George W - b ca 1797 (or 1803) Va (census #1091) - d 24 Aug 1862 - age 65y - h/o Susan G - cd fever - Adm 10 Oct 1864 Lewis LINKENHOKER, Sheriff

MORRIS, George W Jr - b ca 1839 Bot Co - d 24 Aug 1862 - age 23y - f George W MORRIS - m Susan - cd fever - rep by mother

MORRIS, William - b ca 1842 Bot Co - d 24 Aug 1862 - age 20y - f George W MORRIS - m Susan - cd fever - rep by mother

MORRISON see MORISON

MORRISON, Mason - b ca 1895 - d 10 Sep 1913 - buried Buchanan Cem - cd train wreck

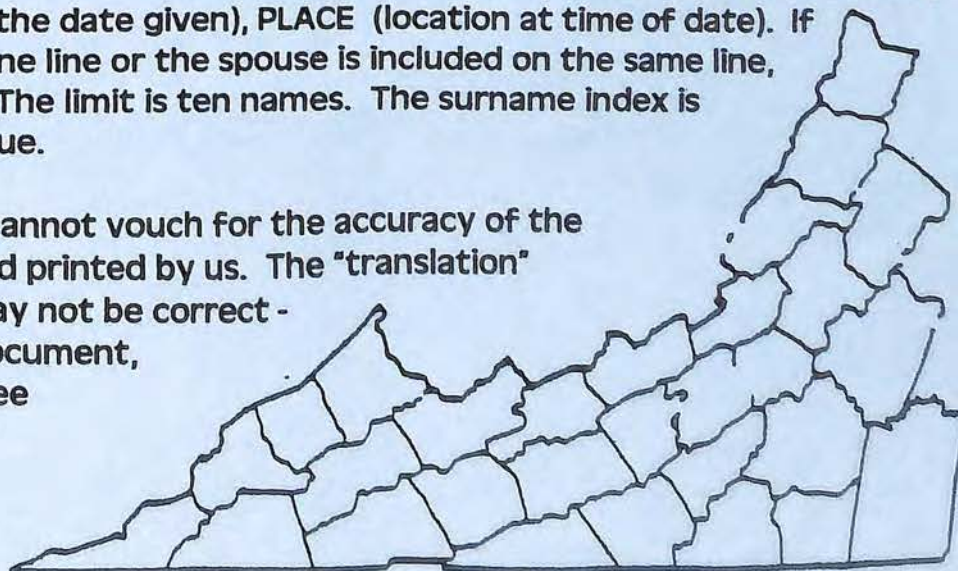
GENEALOGICAL QUERIES: Each member is entitled to one (1) to three (3) free 60 word query (does not include your name, address and e-mail address) per issue as space permits. Please make your query as clear and specific as possible so that others can understand and have a chance to help you. The queries will be printed exactly as submitted. Each query should include names, dates, and location to identify the person or persons you are researching. Please CAPITALIZE all surnames including maiden and married names. Do not abbreviate, we will do so if necessary. If handwritten queries are submitted, please print legibly. Queries for non-members are 5 cents per word, not including your name, address and e-mail address. Queries must be received prior to the 1st of the month preceding publication.

FAMILY REUNION, PUBLICATION OF BOOK, NEWSLETTERS, ETC.: Limited to 60 words, not including your name, address and e-mail address or website. Send the 60 word notice as you want it printed. These notices will be printed as space permits. Members will be given priority in publishing these notices.

MATERIAL FOR PUBLICATION: We welcome articles, records, etc. for publication. The material may not be used in the issue following the date of submission but in a future issue. If a large amount of material is sent , it may take some time to publish because we try to have a variety of material in each issue. (1) **READY FOR PUBLICATION** (which the editor loves). Use 8 ½ X 11 paper, with a minimum margin on all sides of 1 inch. Center your title. Be sure to include your name, address and e-mail address. PLEASE read material carefully before submitting, double-check dates and use "spell checker". If you wish to save the cost of postage, articles for publication may be e-mailed to the editor or The Virginia Room. Photos to be included with your submission may also be e-mailed, most formats can be accommodated. (2) **GIVE SOURCE OF MATERIAL.** Original documents - where found, type of record, page number, etc. or, if known, who (or what facility) now has the document in their possession. We CANNOT print material from printed sources unless we have written permission from the publisher, which you must furnish. We must have the source of materials to give credit to the person who has done the work. (3) **DEADLINE** for submitting material should be at least two months before date of publication. (4) **MATERIAL WILL NOT BE RETURNED.**

SURNAME INDEX: Information will include NAME (given and surname), DATE (birth, death, marriage or where living at the date given), PLACE (location at time of date). If this data takes more than one line or the spouse is included on the same line, it will count as two names. The limit is ten names. The surname index is published in the Summer Issue.

Virginia Appalachian Notes cannot vouch for the accuracy of the material submitted to us and printed by us. The "translation" of the original document may not be correct - get a copy of the original document, if possible, to see if you agree with the printed version.



SPRING 2009

Southwestern Virginia Genealogical Soc., Inc.
P.O. Box 12485
Roanoke, VA 24026

NON/PROFIT ORG.
U.S. POSTAGE
PAID
PERMIT NO 374
ROANOKE, VA

Address Service Requested

1038
Roanoke Public Library Foundation
706 S Jefferson St
Roanoke VA 24016-5104

