

# THE COLONEL



1948

36 346

Jack Falls

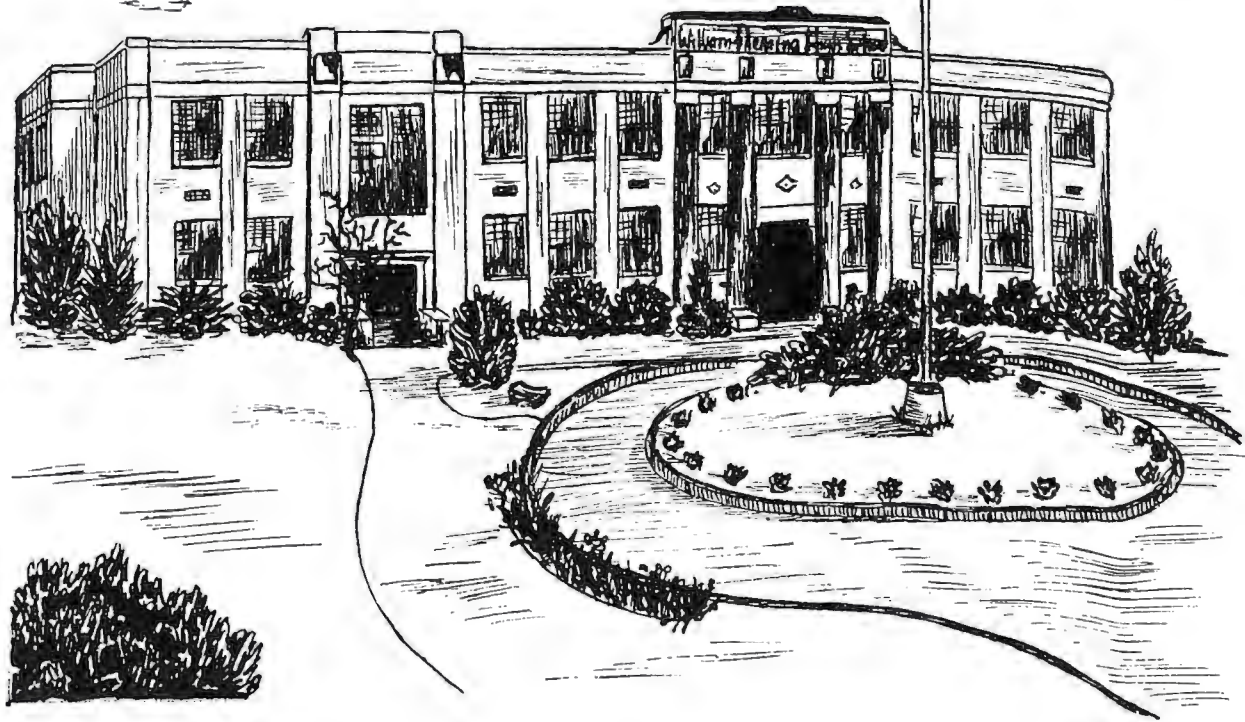
Jack Falls







*No! Shall!*  
*I can't look to a sweet way. May*  
*be involved in everything you can*  
*Debbie*  
*see you*  
*see you*



# THE COLONEL

PUBLISHED BY THE STUDENTS

OF

WILLIAM FLEMING HIGH SCHOOL

ROANOKE, VIRGINIA

*So a*  
*Grand*  
*Don*  
*crushed*

## Foreword



As we began our senior year, many of us looked forward to our happiest school session. We knew there would be fun-packed moments; however, we did not once forget the serious preparation for life which lay before us. Our high school years will help us to meet the future with

a greater and happier outlook on the world. That is our hope for you as you turn the pages of this annual, and recall the happy moments the pictures of fellow-students may bring to mind.

Since we want to remember Fleming and the things for which she stood, we chose the SENIOR RING as the theme of our yearbook. Many seniors selected the blue stone, which symbolizes the traditional Fleming colors, blue and gold. Others preferred the red or black stones, for reasons unknown to us, but we are sure their ring means just as much.

On one side of the ring is a picture of Colonel William Fleming, for whom our school was named. We think he would be proud to know we still honor his name and cherish the ideals he established.

On the opposite side of the ring is the picture of the school. We shall never forget our experiences in the halls of our Alma Mater, whether they were happy or sad. We shall always look forward to coming back in later years to refresh our memories of past experiences, and to see those who will be treading the halls we once trod.

The Annual Staff has tried to make this the best yearbook ever. We sincerely hope each page will help you recall with delight your school days and the life-long friends you made.



Hello! Jack!

Be real good and ill

be seeing you next year!

Wish you all the

luck and happiness

in the world.

Love  
Weaver



## Dedication.

Our school has yet to acquire the mellowness and grace of the spirit that comes only with age. Somehow, when we're seniors, though, we look back over the past five years—years that we thought of as being interminable—years that secretly sped by so quickly.

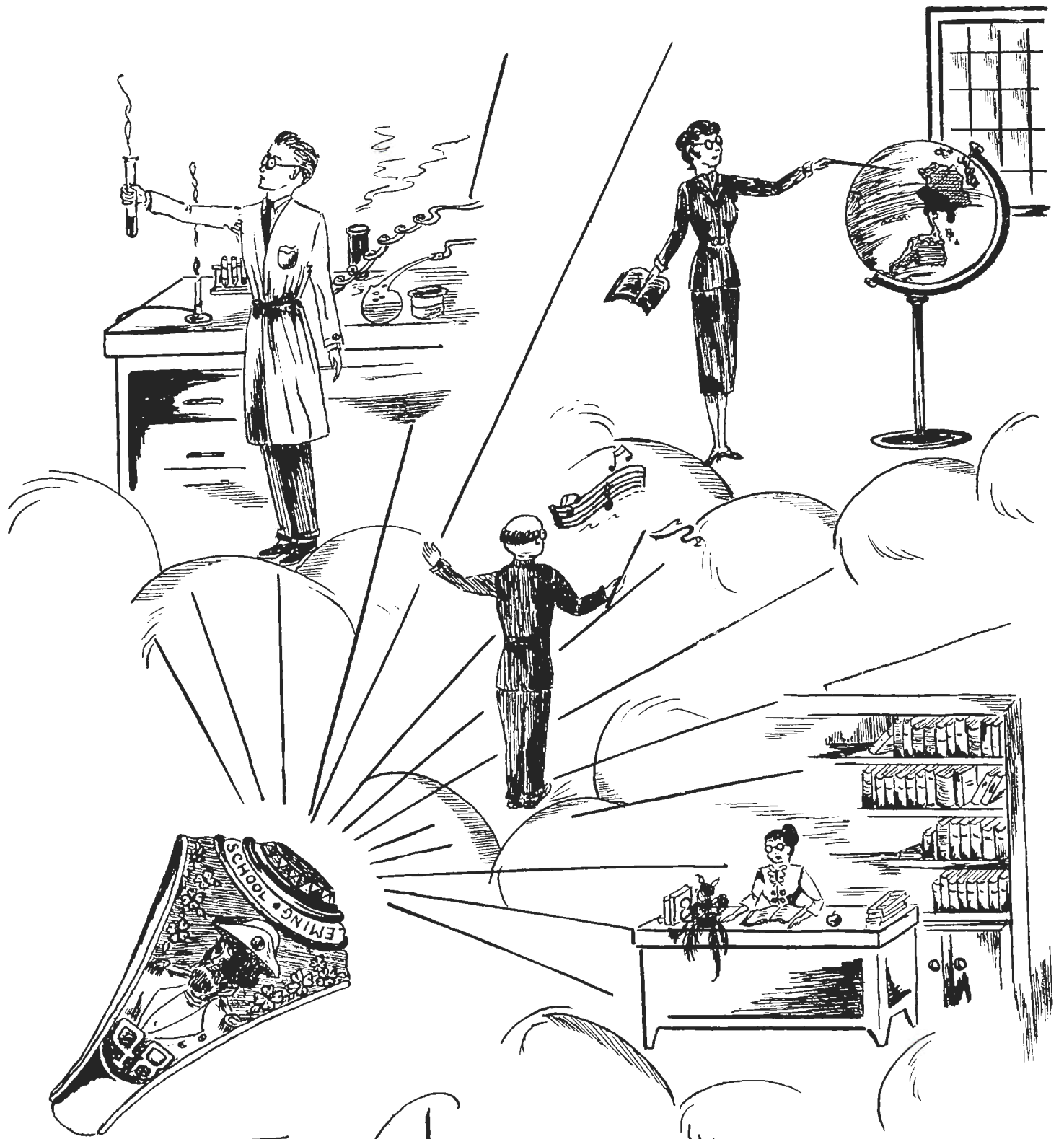
Feeling and remembering living pictures from these five cherished years of our lives, we become aware of an odd sensation, for, even though Fleming is young, her traditions are well-rooted. There is a spirit in the school, gracefully overshadowing all the work, the troubles and the fun that come from these years.

As we walk down the halls each day, we are not aware that we are establishing new goals and carrying forth the traditions that make the feeling of belonging, of honor, of loyalty. As the time draws nearer and we think of leaving, we are very much aware of these traditions and of the students who have trod and widened the same path before us. They have given us a better feeling of security to aid us in climbing the steps to our next portal in life.

It is with this slow realization and eternal memory that we, the Senior Class of '48, do hereby dedicate our annual to the traditions of the school as they are carried on in the many years to come by future Fleming students.

## CONTENTS . . .

- Administration
- Classes
- Athletics
- Clubs
- Sponsors



# Administration

W. Albert Coulter



W. ALBERT COULTER  
*Principal*

For some of you, your stay at Fleming is nearing its end. If we have been able to help you, then we feel happy that we have served your needs to some extent. For those of you returning, our hope is that your remaining days with us will be pleasant and profitable.

W. ALBERT COULTER



MRS. ELIZABETH L. POWELL  
*Assistant Principal*



You can be a very nice boy when you try. Best wishes. Genevieve Dickinson

Jack, you have many good qualities. If these shine. Have a good summer. Thelma Morris

Best of luck Mrs. J.A. Mc. Clean

# Faculty

*First Row—Across*  
 MR. DONALD BAKER, B.S.  
*Industrial Arts*  
 MRS. VIRGINIA BOYD, B.S.  
*Physical Education*  
 MR. HARRY BUSHKAR, B.S.  
*Physical Education*  
 MRS. VIVIAN DICKENSON, B.S.  
*History*  
 MRS. GENEVIEVE DICKINSON, B.E., B.S.  
*Dramatics*  
*Second Row—Across*  
 MR. TOM DIXON, A.B.  
*Science*  
 MRS. ROMA GUSTIN, B.A.  
*Languages*  
 MISS LOU ALICE HILL, B.S.  
*English*

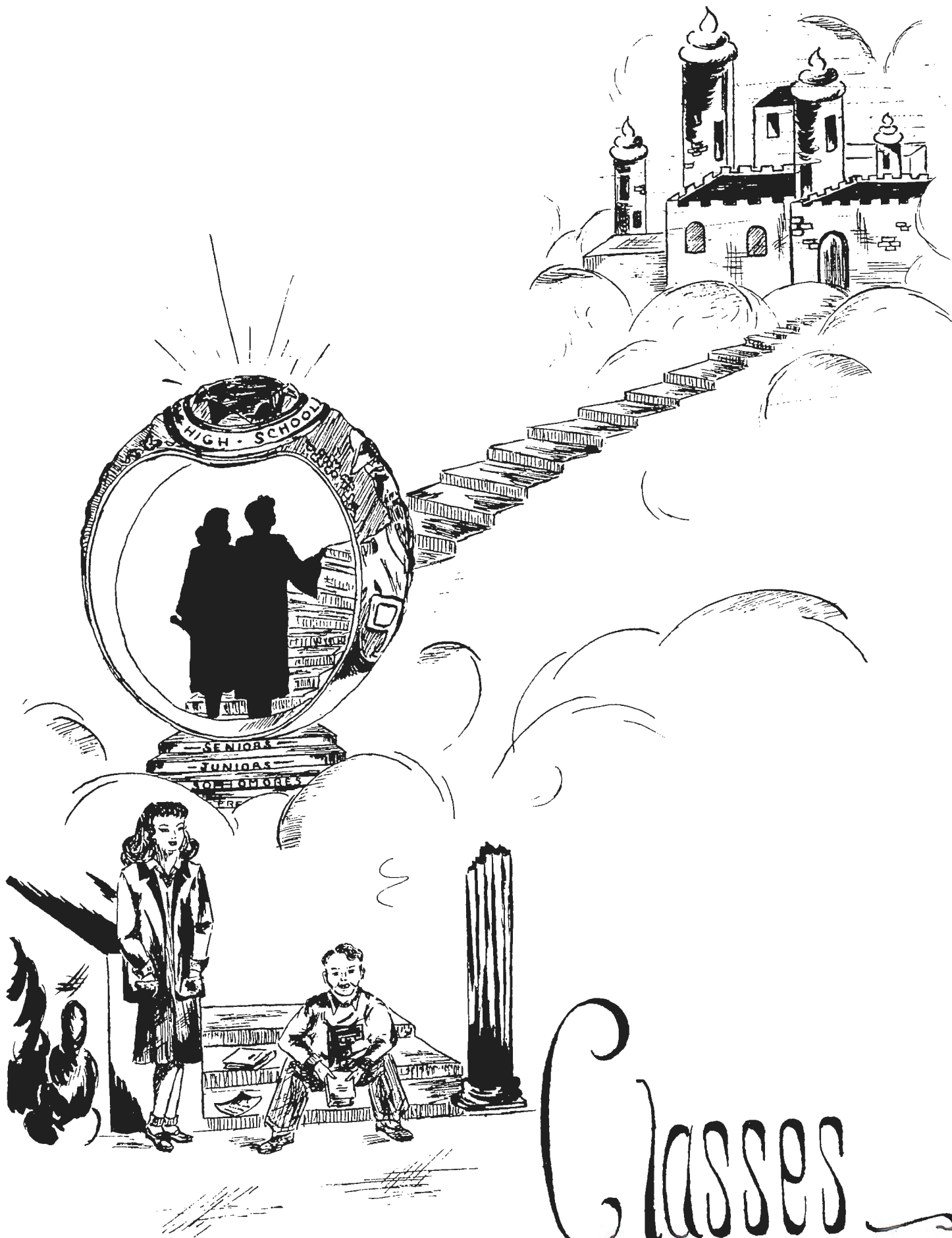
MISS RUTH HUTCHERSON, B.S.  
*Librarian*  
 MISS MARGARET JAMES, B.S.  
*Commercial*  
*Third Row—Across*  
 MISS GAYLE JOHNSON, B.S.  
*History*  
 MISS PEARL KIRKWOOD, B.S.  
*General Science*  
 MRS. VIRGINIA KIRKWOOD, B.S.  
*Mathematics*  
 MRS. CATHERINE G. LOOMIS, B.S.  
*English*  
 MRS. VIRGINIA MASON, B.S.  
*English*  
*Fourth Row—Across*  
 MISS THELMA MORRIS, A.B.  
*Mathematics*

MRS. RUTH PAINTER, B.S.  
*Science*  
 MISS FANNIE LEE SANDERSON, A.B.  
*Music*  
 MISS FRANCES SANDERSON  
*Principal's Secretary*  
 MRS. DAILY SLOAN, B.S.  
*Home Economics*  
*Fifth Row—Across*  
 MR. FRED SMITH, B.S.  
*Physical Education*  
 MISS BETSY STONE, A.B.  
*English*  
 MRS. EDITH WILKERSON, A.B.  
*Geography*  
 MISS IVA L. WILLIAMS, B.A.  
*Philosophy*



## Long, Long Ago

1. GORDON PETERS
2. BETTY BOYD
3. MARY JOYCE MATTHEWS  
*(changed to be cutie)*
4. FRANCES BUTNER
5. EVELYN DEMOTT
6. YVONNE STONE
7. JACK LANFORD
8. KENNETH MOTLEY
9. GRETA HARDIE
10. PEGGY FRANKIE
11. JEANINE HAMMOND
12. BETTY JANE ABBOTT
13. ALMA TICE
14. CLAIRE ANN ABBOTT
15. JOYCE CARSON
16. BETTY ROBERTSON
17. BARBARA GREIG
18. BUDDY HOLCOMB
19. JACK BEETON
20. BETTY BATTS
21. JEAN ZIEGLER



# Classes

## Senior Officers . . .



LAWRENCE MURRAY  
*President*

DOROTHY BIBLE  
*Vice President*

BETTY BOYD  
*Secretary-Treasurer*

JOE WEBBER  
*Historian*

## Sponsors . . .



MRS. VIRGINIA KIRKWOOD

MISS MARGARET JAMES

MRS. VIRGINIA MASON

Being a senior means a lot. It means checking credits and picking up required subjects needed to graduate. It means cheering the teams to victory as they struggle to win. It means publishing the year book, Senior Day, the Senior Play, the Prom and New York. It means wearing the traditional grey and marching sedately down the aisle.

But, being a senior means more than this. It means the serious realization of what lies before us. It means the beginning of the proper adjustment to future living.

Being a senior means the ending of happy relationship with teachers and fellow-students. It means that we are about to become Fleming's tradition. It means graduation.

## Seniors

BETTY JANE ABBOTT  
*"Abbott"*

Jovial, enthusiastic, kind



JEAN MARIE ARRINGTON  
*"Ree"*

Energetic, neat, cheerful



BETTY LOU ASHWELL  
*"Betsy"*

Frank, talkative, obliging



EMORY CARLILE BALDWIN, JR.  
*"Jack"*

Reliable, silent, reserved



BETTY JO BATTS  
*"B. J."*

Dainty, serene, modest



## Seniors

CLAIRE ANN ABBOTT  
*"Claire Ann"*

Sincere, placid, courteous



BETTY JEAN ASBURY  
*"Ducky"*

Sedate, cautious, jovial



DOROTHY BABALIS  
*"Dot"*

Tactful, refined, poised



CLAIRE BELLE BASHAM  
*"Claire"*

True, reserved, well-bred



HARVEY JACKSON BEETON  
*"Jack"*

Masculine, popular, witty



# Seniors

DOROTHY MAY BIBLE  
 "Dotty"  
 Obliging, dependable, erudite



SUE ELIZABETH BOWER  
 "Susie Q"  
 Studious, cooperative, friendly



GEORGE PRICE BOWMAN, JR.  
 "Buck"  
 Energetic, bold, intelligent



RAYMOND LEE BREEDEN, JR.  
 "Handsome"  
 Handsome, vivid, original



VENEDA LEE BUCKNER  
 "B. O."  
 Striking, radiant, composed



*Lots of luck always.  
 George*

*Mr. J. J. ...  
 we had fun ...  
 the fact ...  
 I think you ...  
 hope ...  
 you ...*

# Seniors

EVELYN ELIZABETH BOOTH  
 "Bootie"  
 Charming, trustworthy, earnest



JOYCE YVONNE BOWLES  
 "Billie"  
 Elegant, happy, harmonious



BETTY ALICE BOYD  
 "Babs"  
 Attractive, vivacious, candid



VIRGINIA LOIS BRYANT  
 "Shorty"  
 Genteel, prim, grateful



FRANCES LA-DENE BUTNER  
 "Fran"  
 Studious, stanch, capable



*Lots of luck Jack  
 Be good ...  
 take good care  
 Betty Alice Boyd  
 "Babs"  
 Attractive, vivacious, candid  
 or Fleming next  
 year. Be seeing  
 you down  
 Love, Zellis*

Best of  
 luck to a good  
 friend and a swell  
 guy - Thanks for the candy -  
 "Dickie"

## Seniors

RICHARD EVELYN BYRD  
 "Dickie"  
 Sportsman, manly, likable



## Seniors

RUBY JUANITA CALDWELL  
 "Nita"  
 Collected, loyal, fashionable



VERNA HESS CARICOFÉ  
 "Verna"  
 Sincere, tranquil, learned



MARY LOUISE CARROS  
 "Mary"  
 Sedate, genteel, keen



JOYCE ANN CARSON  
 "Kitty"  
 Lively, liberal, genial



JAMES ROBERT CARTER, JR.  
 "Jimmy"  
 Versatile, modest, sagacious



LEON ALGURES CHATMAN  
 "Joe"  
 Truthful, obliging, polite



NANCY LOUISE CLEMENT  
 "Lou-Lou"  
 Silent, studious, refined



ANNE PRESTON CORNETT  
 "Anne"  
 Striking, wise, enthusiastic



JUNE DAMARIS CRAWFORD  
 "Bug"  
 Reticent, becoming, loyal



*Best of luck to a small guy.  
Melvin*

## Seniors

ROY MELVIN CREASY  
"Melvin"  
Quiet, fair, earnest



## Seniors

EVELYN PARRISH DEMOTT  
"Evelyn"  
Elegant, merry, admirable



*Love, Evelyn  
Look on page 45  
Best of luck to a small ping-pong player - Bill Diehl*

BARBARA BELL DENT  
"Barbara"  
Harmonious, agreeable, candid



WILLIAM PAUL DIEHL, JR.  
"Bill"  
Masculine, engaging, sound

*See page 71: Nancy*  
NANCY JOY DILLON  
"Karo"  
Popular, humorous, picturesque



GERALD RAY DOYLE  
"Jake"  
Cheerful, mischievous, witty

DERSA JUANITA FEAZELL  
"Fea"  
Quiet, devoted, qualified



CLARA MAE FERRELL  
"Dimples"  
Attractive, joyous, valiant

W. RUSSELL FRACKER  
"Russell"  
Serious, solemn, natural



PEGGY BELLE FRANKIE  
"Peggy"  
Reliable, intelligent, grateful

## Seniors

NAIDA LEE GIBSON  
*"Naid"*  
 Placid, prim, calm



BARBARA ANNE GREIG  
*"Bob"*  
 Liberal, docile, musical



JEANINE PAGE HAMMOND  
*"Jeanie"*  
 Composed, obliging, keen



RAY MADISON HART  
*"Razor"*  
 Handsome, sincere, genial



EVERETT GUY HOLSTEIN  
*"Buddy"*  
 Friendly, droll, pleasant



## Seniors

JEAN ELIZABETH GOODIN  
*"Jeanie"*  
 Grateful, skillful, prompt



EVELYN JOYCE HALE  
*"Joy"*  
 Outstanding, admirable, clever



GRETA MAE HARDIE  
*"Blondie"*  
 Nice, original, practical



JOSEPH WILLARD HOLCOMB, JR.  
*"Buddy"*  
 Winsome, laudable, original



CLARENCE WILEY HOWELL  
*"Possum"*  
 Enjoyable, vivid, daring



# Seniors

PAUL LESTER HUFFMAN  
 "Huffie"  
 Youthful, forward, sprightly



LINDA LOU JACKSON  
 "Lindy"  
 Comely, dauntless, vivid



RICHARD LEWIS JONES  
 "Pete"  
 Calm, original, genial



JOAN AUDREY KEMP  
 "Joanie"  
 Charming, frank, demure



JOHN CLAYTON LANFORD  
 "Jack"  
 Jovial, masculine, unselfish



# Seniors

GEORGE WASHINGTON HYLTON  
 "George"  
 Reserved, polite, kind



ELTON THOMAS JONES, JR.  
 "Shorty"  
 Amusing, lively, eager



ALAN STEVEN KANE  
 "Alan"  
 Erudite, generous, optimistic



DOROTHY ELIZABETH KING  
 "Dottie"  
 Peaceful, fair, happy



WAYNE EDWARD MANN  
 "Wayne"  
 Sociable, entertaining, cooperative



*Best of Luck Always  
 to a swell guy.  
 Shorty*

*Best of Luck  
 Remember me  
 Wayne*

# Seniors

JACQUELIN GAY MARTIN

"Jackie"

Genial, commendable, spirited



RALPH EDWARD MARTIN

"Doc"

Philanthropic, civil, dreamer

*Be glad - come  
around to see  
me in about  
mid May when  
you come a  
young lady  
with eyes*

MARY JOYCE MATTHEWS

"Red"

Original, amusing, witty



*Part of luck to as well  
gay. Remember the 104 you  
see me. Granville*

GRANVILLE BERKLEY MEADOR

"Granville"

Relaxed, practical, loyal

BETTY JANE MILTON

"Janie"

Refined, neat, mannerly



FORREST GLENWOOD  
MORGAN, JR.

"Bonsack"

Good looking, powerful,  
laudable

NEDRA JUANITA MORRIS

"Pete"

Helpful, tidy, conscientious



KENNETH LEIGHTON MOTLEY

"Motley"

Talented, reliable, likable

MARY SUE MUNSEY

"Suzie"

Sweet, efficient, graceful



LAWRENCE PATTERSON  
MURRAY, JR.

"Specks"

Accommodating, scholarly,  
energetic

## Seniors

DENNIS OAKEY PARKER  
 "Oakey"  
 Handsome, cheerful, original



ROBY HUBERT PATRICK, JR.  
 "Pat"  
 Faithful, courteous, true



FRANK GORDON PETERS  
 "Pete"  
 Dramatic, astonishing,  
 admirable



ELIZABETH FRANKLIN PETTIT  
 "Libby"  
 Reliable, cooperative, capable



BILLY MARSHALL RIGBY  
 "Bill"  
 Polished, boyish, different



## Seniors

EVELYN JOYCE PARRISH  
 "Joy"  
 Serene, striking, artistic



PHYLLIS JEAN PEDIGO  
 "Phyl"  
 Attractive, prim, thoughtful



CHARLES HANSON  
 PETERSON, JR.  
 "Pete"  
 Studios, prompt, polite



WALTER POFF  
 "Mouch"  
 Peaceful, alert, serious



LOWELL EDMOND ROBERSON  
 "Lowell"  
 Dignified, calm, prompt



# Seniors

LILLIE MARY ROBERTS  
 "Willie"  
 Calm, honest, reliable



# Seniors

BETTY JANE ROBERTSON  
 "Susie"  
 Reserved, sincere, orderly



*Hi Jack,  
 Remembered  
 over basketball team  
 in class by good  
 luck*

GEORGE ROBERTS SARVER  
 "Bert"  
 Athletic, mischievous, witty



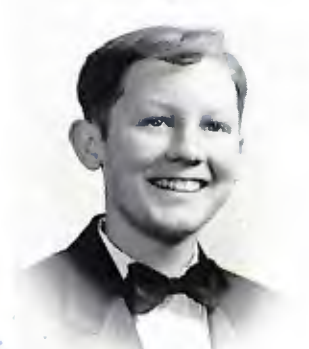
GEORGE RILEY SAUL  
 "Cactus"  
 Athletic, good sport, affable

DOROTHY LEE SAUNDERS  
 "Dot"  
 Dignified, poised, modest



KATHERINE SCORDAS  
 "Kitty"  
 Frank, attractive, dauntless

JAMES ROBERT SHIVELY  
 "Bobby"  
 Youthful, meek, kind



*Here's wishing a sweet  
 and crazy little  
 guy the best of  
 everything in  
 the world. I'm  
 leavin' school  
 this year but don't  
 forget me. I know  
 I shall never  
 forget you.*

REGGIE MAE SHUGART  
 "Sugar"  
 Companionable, true, studious

*Hi! ... wishing  
 you the best of  
 luck ...*

WILLIE MERYLE STANLEY  
 "Willie"  
 Becoming, capable, magnetic



HELEN SUE STARR  
 "Helen Sue"  
 Pretty, sweet, agreeable

*Love,  
 Reggie*

## Seniors

BETTY JEAN STONE

*"Betty Jean"*

Gay, genial, wholesome



## Seniors

YVONNE ERIS STONE

*"Yvonne"*

Intelligent, talented, willing

BETTY JANE STULTZ

*"Shorty"*

Pleasant, hearty, humble



PATSY ANN TAYLOR

*"Pat"*

Dignified, admirable, refined

FRANCES NELL THOMPSON

*"Frances"*

Melodious, cheerful, fair



ALMA MAYE TICE

*"Margie"*

Diligent, cooperative, serene

LOWELL ANDREW TINSLEY

*"Tinsley"*

Witty, friendly, laudable



MILLARD CHANDLER  
TOWNSEND

*"Chan"*

Scholarly, commendable,  
reliable

BEVERLEY ANN TRENT

*"Trent"*

Spruce, poised, pleasing



TREVOR DERE E TURNER

*"Tete"*

Whimsical, original, dynamic

*Walls here wishing you the best of luck a guy can have. Vest*

## Seniors

BERLIN THEXTER  
UMBERGER, JR.

"Berlin"

Dependable, reserved, sensible



## Seniors

ROBERT PETER VEST, JR.

"Bob"

Silent, patriotic, dependable



OWEN RANDOLPH WADE

"Peabody"

Funny, hardy, wholesome



JOSEPH FRANK WEBBER

"Joe"

Vehement, droll, uncomparable



HAROLD RAY WHITE

"Whitey"

Neat, sedate, lively



BOB DONALD WHITESIDE

"Winney"

Dashing, likable, popular



DOLORES ELOISE WHITTINGTON

"Dolores"

Trim, reticent, cultured



JOSEPHINE ROMONA WOODSON

"Jo"

Polished, orderly, courteous



LORETTA JEAN ZIEGLER

"Ziggee"

Studious, ardent, engaging



THELMA JANE ZIMMERMAN

"T. J."

Ambitious, obliging, neat



NOT PICTURED

BETTY MITCHELL

RUDOLPH GUNN POWELL

*Hey Bob  
never wishes  
the best of everything  
to a fellow band  
member.  
around  
see you  
Harold*

Most Likable



Anne Cornette  
Bob Whiteside

Most Popular



Nancy Dillon  
Gerald Doyle

Most Outstanding



Yvonne Stone  
Kenneth Motley

# Senior

Most Athletic



Roberta Sarver  
George Saul

Most Dramatic



Paisy Taylor  
Trevor Turner

BEST AROUND



Mary Joyce Matthews  
Gordon Peters

Remember!

BEST LOOKING



Joan Kemp  
Oakley Parker

Lots of Luck  
in your future  
years at Fleming!  
Be good.  
Joan

MOST DEPENDABLE



Dorothy Bible  
Buddy Holcomb

MIRROR

MOST LIKELY TO SUCCEED



Joyce Hale  
Chandler Townsend

TYPICAL SENIOR



Mary Sue Munsey  
Jack Beeton

# Senior Directory . . .

- BETTY JANE ABBOTT—Y-Teens; Literary; Masque; Library; Basketball, Manager.
- CLAIRE ABBOTT—F. H. A.; Y-Teens; Masque.
- MARIE ARRINGTON—Masque; Y-Teens; Beta; Glee; F. H. A.; Basketball; Newspaper Staff.
- BETTY ASBURY—F. H. A.
- BETTY ASHWELL—Y-Teens; F. H. A.
- DOROTHY BABALIS—Y-Teens; S. C. A.
- JACK BALDWIN—Camera, Vice President; Beta; Hi-Y, Chaplain.
- CLAIRE BASHAM—Y-Teens; F. H. A.; Library.
- BETTY JO BATTS—Y-Teens; F. H. A.; Masque; Glee.
- JACK BEETON—Masque; Literary; Thespians; Football; Basketball; Track; Hi-Y.
- DOROTHY BIBLE—Masque, Treasurer; Y-Teens; Thespians; Senior Class, Vice President; Beta; Art; Science; Literary; Newspaper Staff, Assistant Editor.
- EVELYN BOOTH—Masque, Secretary; Y-Teens, Secretary, President; Beta; S. C. A.; Annual Staff; Glee.
- SUE BOWER—Thespians; Beta; Science; Masque.
- JOYCE BOWLES—Y-Teens; Glee.
- GEORGE BOWMAN—Masque; Beta; Literary; Science; Hi-Y; Newspaper Staff.
- BETTY BOYD—Y-Teens, Master Key; Literary, Treasurer; Senior Class, Secretary; Glee; Thespians; Masque; Annual Staff.
- RAYMOND BREEDEN—Football; Basketball; Track; Glee; Masque, Vice President; Literary; Art, Vice President.
- VIRGINIA BRYANT—Y-Teens; Glee; Masque.
- VENEDA BUCKNER—Masque; Y-Teens; F. H. A.; Basketball; Glee.
- FRANCES BUTNER—F. H. A., Reporter; Glee; S. C. A.; Beta; Library, Vice President.
- DICKIE BYRD—Football; Basketball; Track; Baseball.
- JUANITA CALDWELL—Y-Teens; F. H. A.; Masque.
- VERNA CARICOFÉ—Newspaper Staff; Y-Teens; Beta.
- MARY CARROS—F. H. A., President; Sponsor of Junior Home Economics.
- JOYCE CARSON—Y-Teens; Art, Secretary; Newspaper Staff.
- JAMES CARTER—Hi-Y, Vice President, Program Chairman; Literary, Vice President; Masque; Annual Staff.
- LEON CHATMAN—Football; Track; Glee; Camera; Newspaper; Masque.
- NANCY CLEMENT—Beta; Thespians; Science; Y-Teens; Masque; Literary.
- ANNE CORNETT—Y-Teens, President; Glee.
- JUNE CRAWFORD—Y-Teens; F. H. A.; Library; Masque.
- MELVIN CREASEY—Camera, Secretary.
- EVELYN DEMOTT—Masque; Y-Teens, Program Chairman; Literary, Historian; Thespians; Cheerleader; Glee.
- BARBARA DENT—Newspaper Staff; Y-Teens.
- BILL DIEHL—Football, Co-captain; Track; Basketball; Glee, President; S. C. A.
- NANCY DILLON—Masque; Y-Teens; Beta; Literary; Thespians, Secretary; Junior Class, Program Chairman; Cheerleader; Glee, Vice President.
- GERALD DOYLE—Literary; Football; Football, Manager; Masque; Thespians; Glee, Treasurer; Newspaper Staff; Hi-Y; S. C. A.
- JUANITA FEAZELL—Y-Teens; Glee; F. H. A.
- CLARA FERRELL—Masque; Y-Teens; F. H. A.; Basketball; Glee; Newspaper Staff.
- RUSSELL FRACKER—Pep Club.
- PEGGIE FRANKIE—Glee; Newspaper Staff; Y-Teens.
- NAIDA GIBSON—F. H. A.; Y-Teens.
- JEAN GOODIN—Y-Teens; Beta; Thespians; Masque; Glee.
- BARBARA GREIG—Y-Teens; Library; F. H. A.; Glee; Beta.
- JOYCE HALE—Y-Teens; Masque, Program Chairman; Beta, President; Glee; Thespians; Literary; Junior Class, President; Annual; S. C. A., Vice President; Science.
- JEANINE HAMMOND—Masque; Y-Teens; Thespians; Glee; Literary; F. H. A.; Annual.
- GRETA HARDIE—Y-Teens; F. H. A.; Art.
- RAY HART—Senior Science, Vice President; Art; Annual Staff; Hi-Y; Senior Beta, Vice President, Treasurer; Sophomore Class, President.
- BUDDY HOLCOMB—Football; Track; Basketball, Manager; Masque; Literary, Treasurer; Hi-Y; S. C. A.; Thespians; Basketball; Annual Staff.
- EVERETTE HOLSTEIN—Literary; Masque; Football; Camera; Track.
- CLARENCE HOWELL—Glee.
- PAUL HUFFMAN—Football; Basketball; Track; Football, Manager; Basketball, Manager; Glee; Masque; Camera.
- GEORGE HYLTON—Football; Basketball; Hi-Y, Treasurer.
- LINDA JACKSON—Y-Teens; Masque.
- ELTON JONES—Beta.
- LEWIS JONES—Basketball; Masque.
- ALAN KANE—Basketball, Manager; Beta; Thespians, Treasurer; Literary; Hi-Y; Annual, Editor; S. C. A., Historian; Masque.
- JOAN KEMP—Y-Teens.
- DOROTHY KING—Y-Teens; Masque.

# Senior Directory . . .

- JOHN LANFORD—Football; Basketball; Hi-Y, President; Basketball, Manager; S. C. A.
- WAYNE MANN—Football; Basketball.
- JACKIE MARTIN—Cheerleader, Secretary; S. C. A.; Y-Teens; Masque; Thespians; Beta; Glee.
- RALPH MARTIN—Band; Camera; Hi-Y; Literary; Newspaper; S. C. A.; Masque; Science, President.
- MARY JOYCE MATTHEWS—Y-Teens, Treasurer; Masque; Literary, Secretary; Glee; Thespians, Vice President; Annual Staff; Newspaper Staff; Cheerleader, Secretary; Debate.
- GRANVILLE MEADOR—Football.
- BETTY MILTON—Masque; Y-Teens; Literary; Newspaper Staff; Glee.
- BETTY MITCHELL—Glee; F. H. A.; Y-Teens.
- FORREST MORGAN—Junior Class, Vice President; Basketball; Track; Hi-Y; Football.
- NEDRA MORRIS—Y-Teens; F. H. A., Vice President.
- KENNETH MOTLEY—Thespians; S. C. A., President; Hi-Y; Basketball, Manager; Masque, Vice President; Art, President; Annual Staff; Newspaper Staff; Literary.
- MARY SUE MUNSEY—Y-Teens, President, Secretary; Open House Representative; Masque; Beta; Literary; Glee; Annual Staff; Pep; Head Cheerleader; Thespians; Newspaper Staff.
- LAWRENCE MURRAY—Junior Class, Secretary; Senior Class, President; Glee; Boys' State; Debate; Football; Masque; Band; Literary; Beta; Thespians; Hi-Y; Science; Newspaper Staff; Annual Staff.
- OAKLEY PARKER—Football; Basketball; Track; S. C. A.; Glee.
- JOYCE PARRISH—Masque; Y-Teens; F. H. A., Secretary; Thespians; Glee; Newspaper Staff.
- ROBY PATRICK—Masque; Hi-Y; Band; Newspaper Staff; Library; Camera, President; Science; S. C. A.
- PHYLLIS PEDIGO—Masque; Y-Teens; F. H. A.; Newspaper Staff.
- GORDON PETERS—Glee; Boys' State; Football; Track; Basketball; Masque, President; Literary, Historian; Hi-Y; Beta; Thespians, Vice President; S. C. A.
- CHARLES PETERSON—Beta; Hi-Y; Camera; Science.
- ELIZABETH PETTIT—Y-Teens; Masque; Thespians; Beta; Literary.
- WALTER POFF—Glee.
- RUDOLPH POWELL—Glee; Football; Basketball.
- BILLY RIGBY—Art, Treasurer; Glee; Football.
- LOWELL ROBERSON—Literary.
- LILLIE ROBERTS—Y-Teens; F. H. A.; Masque.
- BETTY ROBERTSON—Y-Teens; Masque; Glee.
- ROBERTA SARVER—F. H. A.; Basketball, Captain; Glee.
- GEORGE SAUL—Football; Basketball, Captain; Baseball; Glee, Treasurer; Junior Class, Treasurer.
- DOROTHY SAUNDERS—Y-Teens; Masque; Newspaper Staff; Glee.
- KATHERINE SCORDAS—Y-Teens; Masque, Vice President; F. H. A., President; Glee; Thespians; Newspaper Staff; S. C. A.
- BOBBY SHIVELY—Library; Hi-Y.
- PEGGY SHUGART—F. H. A.; Y-Teens; Library, President; Beta.
- MERYLE STANLEY—Masque; Y-Teens; Beta; Glee; F. H. A.; Basketball.
- HELEN SUE STARR—Beta; Glee, Secretary; F. H. A.
- BETTY STONE—Masque; Y-Teens; Thespians; Literary; Glee; Beta.
- YVONNE STONE—Thespians; Y-Teens; Literary; Art, Secretary; Debate; Newspaper, Editor; S. C. A.
- BETTY STULTZ—Y-Teens; F. H. A.; Masque.
- PATSY TAYLOR—S. C. A.; F. H. A.; Y-Teens; Literary; Masque; Thespians, President; Assistant Editor, Annual; Beta, Program Chairman.
- FRANCES THOMPSON—Y-Teens, Secretary; Masque; Glee; Beta.
- ALMA TICE—Y-Teens, Treasurer; Masque; Beta; Thespians; Newspaper Staff.
- LOWELL TINSLEY—Masque, President; Science, Vice President; S. C. A.; Newspaper Staff; Glee; Hi-Y; Basketball, Manager.
- CHANDLER TOWNSEND—Debate; Science, President; Science, Junior Director; Beta; Literary.
- BEVERLY TRENT—Y-Teens; Glee; Masque; F. H. A.
- TREVOR TURNER—Debate; Literary, President; Masque; Thespians; Annual Staff; Basketball; Football; S. C. A.
- BERLIN UMBERGER—Beta; Hi-Y, Chaplain; Camera; Annual, Business Manager; Library, Treasurer.
- ROBERT VEST: Library; Masque.
- OWEN WADE—S. C. A.; Football.
- JOE WEBBER—Masque; Literary; Glee; Hi-Y, Secretary; Senior Class, Historian; Thespians; Football; Football, Manager; Basketball.
- HAROLD WHITE—Camera, Treasurer; Masque; Literary; Hi-Y; Glee; Band.
- BOB WHITESIDE—Football, Co-captain; Basketball; Track; Glee.
- DOLORES WHITTINGTON—Beta; Glee; Thespians; Masque; Literary; Y-Teens; Annual Staff; Newspaper Staff.
- JOSEPHINE WOODSON—Masque; Y-Teens; Glee.
- JEAN ZIEGLER—Y-Teens; Masque.
- THELMA ZIMMERMAN—S. C. A.; Science; Y-Teens; Masque; Thespians; Newspaper Staff, Business Manager.

## Junior Officers . . .



DONALD "BUDDY" SMITH  
*President*

DENNY GENE EARLY  
*Vice President*

REBECCA DUDLEY  
*Secretary*

FRANK RUNION  
*Treasurer*

## Sponsors . . .



MISS FANNIE LEE SANDERSON

MR. TOM DIXON

MRS. VIVIAN DICKENSON

Juniors, at last, with just one more year ahead!

A junior leads a busy life, so we found that we were no exceptions to the rule. Along with important studies were our social activities.

We sponsored a comic basketball game and the annual Christmas formal dance.

The Prom, with a romantic setting, soft music and delicious refreshments, was the real highlight of the year.

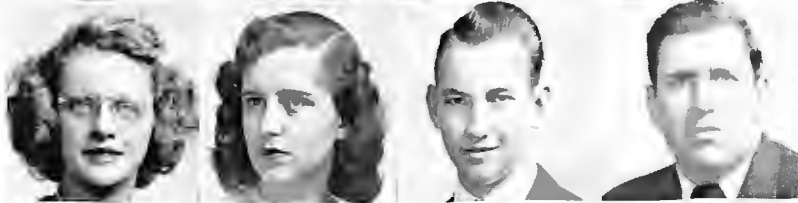
Our dreams of four years are almost reached—we shall soon be "the Seniors."

# Juniors

JAMES ALVIS  
MARLENE ANDERSON  
LEE ANTHONY  
ROBERT ARNOLD



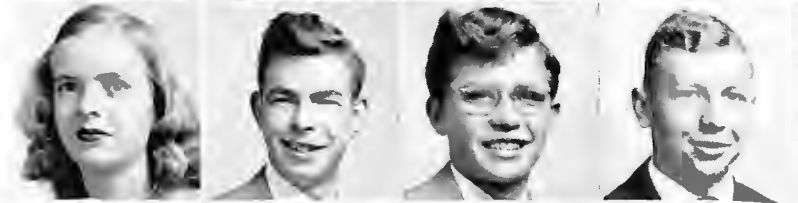
LILLIAN ASBURY  
MARY ALICE BOSTIAN  
ROBERT BOWMAN  
THEODORE BRILLHART



MARY BROCE  
BARBARA BUCKNER  
HELEN BURNETTE  
ULDINE CALDWELL



RUTH CALLISON  
WILLIAM CARTER  
ALFRED CHEATWOOD  
RONALD CLATTERBUCK



MARY LOUISE CRISS  
MAYNARD DAMRON  
VIRGINIA DAVIS  
VIRGINIA DEWITT



BETTY LOU DEYERLE  
AILEEN DOSS  
AUDREY DOYLE  
REBECCA DUDLEY



DENNY GENE EARLY  
PEGGY JO ELLER  
PERRY ELLIS  
JACK EMERICK



DOLORES EVANS  
BETTY JOYCE FITZGERALD  
RICHARD GAY  
LEONARD GISINER



*James is sinking  
to a swamp  
look at the  
swamp in the  
see you  
enough  
Helen*

*Fitic  
Page 44*

*It's such  
 a fine joy to be  
 with you at all times  
 in our lives.*

# Juniors



RICHARD GREIG  
 FLORENCE GUTHRIE  
 ANNIE MAE HAMBRICK  
 JANET HAMILTON



NORVA HARDIE  
 DURWOOD HILL  
 DOROTHY HOGAN  
 RALPH HOLLAND



NANCY HURD  
 CHARLOTTE INGE  
 LETTY KAVANAUGH  
 BETTY KEY



PHYLLIS LINK  
 BARBARA LLEWELLYN  
 JOYCE LOWRY  
 BETTY JUNE MATTOX



ANNIE MARIE MAXEY  
 BETTY ANN MEADOR  
 BEVERLY MICHAEL  
 VICTOR MIDDLEKAUFF



BETTY MITCHELL  
 ELSIE OBENCHAIN  
 RAY OTEY  
 EVELYN PAYNE



MARY ANN PETTY  
 VIRGINIA PHILLIPS  
 DAN PIRRUNG  
 EARL RAKES



CHARLES RANDALL  
 FRANK RUNION  
 FRANCES SALMONS  
 ROBERT SEMONES

*Betty Semones*

*Hi sweet Helen, it was well  
 living you all these years.  
 Lots of love to a well boy,  
 Betty Nelson*

# Juniors

BILLY SHANKS  
EVELYN SHELBOURNE  
CONSTANCE SHIVELY  
DONALD SMITH



DAVID SPIGLE  
KATHLEEN THOMPSON  
BETTY TEICHLER  
RUBY VERNON



WINNIE MAE VEST  
NELBOURNE WHITE  
CLAIRE WILKERSON  
ROBERTA WILSON



DORIS WINGO  
CECIL WILLIAMSON  
BARBARA YEATTS



## NOT PICTURED

JAMES BIBLE  
CLAYTON CLARK

JAMES OYLER  
JEAN PARRISH  
DAVID PURVES

ASHFORD WILBOURNE  
DONALD KEESEY

## TO THE JUNIOR CLASS . . .

When we chose the Senior Ring as the theme of our annual, we were inspired by its significance. It is tradition just as the other senior activities have become tradition.

We hope that the image of William Fleming will be uppermost in your minds during your dreams and plans for the coming year. We hope that your ideals will become so well-rooted that they will be great challenges to all future Senior Classes.

LAWRENCE MURRAY, *President*  
Senior Class of '48



# Sophomores

MARY JO HARRIS  
NANCY HASH  
DONNA RAE HOLT  
JUANITA HUDSON  
EMMA HUTCHINS  
BENNIE IRVIN



JOANNE JONAS  
DICKIE JONES  
CLIFFORD JOURNELL  
RICHARD KAVANAUGH  
NANCY KIDD  
JALENE KING



MARY KING  
BETTIE JO LEWIS  
BILLY LING  
MARION RUTH LOVE  
GEORGE LUCK  
CAROLYN SUE LYON



IMOGENE MAY  
VERNELLE MAYS  
JULIA MCGHEE  
ANN MIDDLEKAUFF  
JOENELL MOON  
BARBARA MOORE



BETTY MOORE  
ALBERT MOTLEY  
DIANE MURRAY  
BONNIE MEYER  
RAYMOND MYERS  
RODNEY NICHOLS



BETTY GAY NOLEN  
JOHN OYLER  
EDNA KAY PARKS  
MELVIN PARSELL  
MARILYN PATZOLD  
BARBARA PEDIGO



BETTY PERDUE  
EDWARD PERDUE  
BETTY JEAN PETERS  
VIOLET PRICE  
JEAN PRILLAMAN  
JAMES PUGH, JR.



SHIRLEY ROBERTS  
BILLY RUNYON  
JUNE SCOTT  
ALMA SHELBOURNE  
JUANITA SHUFFLEBARGER  
IRIS SHUMATE



*The Jacks  
Best of  
luck to a  
sweet boy.  
Always  
Alice*

# Sophomores



DONALD SINK  
 JAMES SLAYDON, JR.  
 NINA SLAYTON  
 GERALDINE SNEAD  
 BARBARA SPENCER  
 SARA LOU SPIGLE

BARBARA STANLEY  
 ROBERT STANLEY  
 BETTY JO THOMAS  
 JEAN UMBERGER  
 MARY WALROND  
 JEAN WARE

JUNE WARE  
 CARL WATSON  
 HELEN WEAVER  
 HELEN WEBBER  
 BETTY JO WHARTON  
 NANCY WILKINSON

HAZEL WILLS  
 ROBERT WITHERS  
 BENNY WOODS  
 JAMES WRIGHT

## OFFICERS

RICHARD CRAWFORD.....*President*  
 CLIFTON COON.....*Vice President*  
 TOMMY FRANKLIN.....*Secretary*  
 DOUGLAS HART.....*Treasurer*  
 MRS. RUTH PAINTER  
 MRS. CATHERINE LOOMIS  
 MRS. ROMA GUSTIN  
 MRS. DAILY SLOAN } .....*Sponsors*

## Not Pictured

TOMMY ATKINS  
 BETTE MAE BAIRD  
 JAMES BRYANT  
 VANCE COMER  
 PEGGY EDWARDS  
 VIRGINIA FOSTER  
 BOBBY GREEN

WILLIAM C. HALE  
 DOUGLAS HART  
 RALPH HIGGINS  
 PHIL HIMES  
 DICKIE IRVIN  
 BILLY JERNELL  
 DONALD LOVE

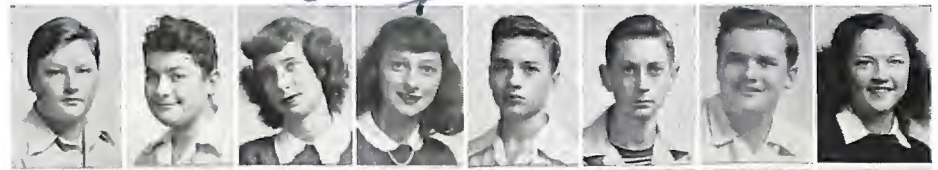
EDWARD NICHOLS, JR.  
 HAROLD PATRAM  
 WARREN PERDUE  
 BOBBY THURMAN  
 RODNEY TURNER  
 VERNON WINGO  
 TOMMY WRIGHT

Well Jack another year has passed  
and you and I were in the same home  
room. Lots of luck always.

*Bobby Calhoun*

Ninth Grade

JACK ADKINS  
JOE ADKINS  
ANN LEE ALLMAN  
PEGGY ARGENBRIGHT  
JOHNNY BABALIS  
HAYNES BARGER  
CHARLES BEASLEY  
OLA MAE BISHOP



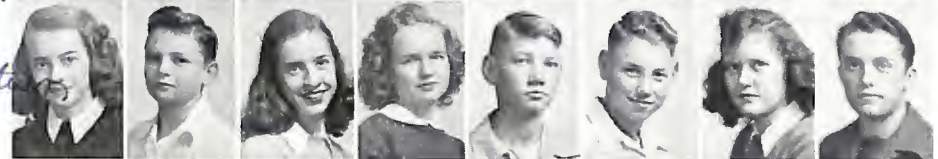
MARJORIE BLEVINS  
ROBERT BOSTIAN  
BEULAH BOSTON  
DONALD BOWLES  
BARBARA BRYANT  
JOAN BRYANT  
PATSY BRYANT  
RONALD BRYANT

*The Soviet  
good luck  
Jack!*



LOIS BUTNER  
BOBBY CALHOUN  
NANCY CALLISON  
RUTH CLAY  
ADDISON COMER  
EDWARD COMER  
LOIS COMER  
DAN CRAWFORD

*Bobby's date*



JEANNINE CRAWFORD  
GORDON CROCKETT  
WILLIAM CUNDIFF  
CLARITA CUNDIFF  
PEGGY ANN CUNDIFF  
REBECCA DALTON  
BILLY DENT  
AUBREY DREWRY



ROBERT DUDLEY  
RITA EMERICK  
CLAUDINE FULTON  
KATHERINE GOAD  
WILLIAM GOFF  
JAMES HALE  
WILLIAM HALE  
WAYNE HALL



PATSY HARDIE  
BARBARA HARRIS  
JEAN HARRIS  
STELLA HECK  
RAYMOND HUFFMAN  
VIRGINIA HUFFMAN  
PEGGY HYLTON  
THOMAS IDINGS



HUGH KANODE  
CHARLOTTE KEY  
FRANCIS KEY  
JAMES KING  
STANARD LANFORD  
HAZEL LAVENDER  
REXINE LEFFEL  
RAY LUCAS



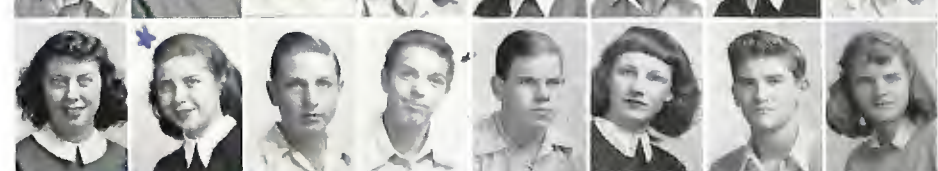
BILLY MARTIN  
WAYNE MATINGLY  
AMARYLLIS MAXEY  
WALLACE MCBRIDE  
BETTY JUNE MEADOR  
HAMNER MEADOR  
DOT MEADOR  
RUTH METZ



DEWEY MONGER  
BETTY LOUISE MOORE  
STEPHEN MOSES  
ZEANIOUS NEWCOMB  
WILLIE MAE NICHOLS  
CHARLES NOELL  
VIRGINIA PAINTER  
RICHARD PEARSON



VIVIAN PEDIGO  
JOAN PRICE  
GEORGE PUGH  
RONALD RATLIFF  
BOBBY REESE  
WILLIE RIDDLEBARGER  
HENRY RILEY  
NANCY RILEY



*Lots of luck to a swell guy  
Jimmy Dale.  
Best of  
Luck.  
Claudia C.*

BOBBY ABSHIRE  
TOMMY BASHAM  
WALLACE BLAIR  
R. C. CROMER

NOT PICTURED  
WAYNE DOOLEY  
CHRISTINE EUBANK  
RICHARD HOLL  
JULIAN HANT

BILL PETERSON  
MONROE PHILLIPS  
ORREN RAKES  
CHARLES RUSSELL

REGINALD SLAYTON  
RITA SHOEMAKER  
EUGENE UPDIKE

*Best of luck  
to a swell  
boy always  
lots of luck  
on every  
one love  
Jimmy*

*Best Wishes  
and love  
of your Aunt  
Jeannie*



## Ninth Grade

BRUCE ROBERTSON  
DONALD ROUTON  
CARLTON SAUL  
EUGENE SAUL  
PATTY SCAGGS  
ROBERT SCOTT  
JEANETTE SEMONES  
BARBARA SHAFER

ROBERT SHUGART  
DOROTHY SINK  
ROBERT SMITH  
SHIRLEY SMITH  
CLARENCE SNEAD  
ERNESTA SPRADLIN  
ROGER THOMAS  
DAVID TOWNSEND

RONALD TUCKER  
BETTY TURNER  
JOY TURNER  
ROSALIE TURNER  
MARTHA VERNON  
ESTLE WADE  
JACK WALLS  
RAY WALTERS

JEAN WEAVER  
ANN WILBOURN  
JIMMIE WHEELER  
DOT WILHELM  
LAWRENCE WILKERSON  
LEONARD WINGO  
IRENE WOOD  
PHYLLIS WOOD

LOIS WORLEY  
RUSSELL YOUNG

*Best wishes and love  
of Aunt Jeannie*

## Ninth Grade

### OFFICERS

BILLY DENT..... *President*  
MARGIE BLEVINS..... *Vice President*  
BETTY JUNE MEADOR..... *Secretary*  
DOROTHY SINK..... *Treasurer*  
MISS THELMA MORRIS, MRS. EDITH WILKERSON, }  
MRS. VIRGINIA BOYD, MISS LOU ALICE HILL, }..... *Sponsors*  
MR. HARRY BUSHKAR

## Eighth Grade

### OFFICERS

RICHARD TOWNSEND..... *President*  
BEVERLY RAKES..... *Vice President*  
MARGARET HARTSELL..... *Secretary*  
JAC BAKER..... *Treasurer*  
MISS GAYLE JOHNSON, MISS PEARL KIRKWOOD, }  
MISS BETSY STONE, MISS IVA WILLIAMS }..... *Sponsors*

## Eighth Grade



HUNTER AKERS, JR.  
VIRGINIA ALIFF  
ANTHONY ALTIERI  
KATHRYN ARGENBRIGHT  
MARY MARGARET AYERS  
JAC BAKER  
JEAN BALLENTINE  
MACK BASHAM

GLORIA BASHAM  
CHARLES BECKWITH  
ROBERT BEHELER  
JUNE BLEVINS  
CECIL BOITNOTT  
NANCY BOWE  
FRANK BRENT  
IMOGENE CAMPBELL

BARBARA CARRICO  
WAYNE CHEATWOOD  
RICHARD CLINE  
TURNER COFFMAN  
HELEN CONNER  
MARLENE CRAIG  
PERCY CRAWFORD  
CHARLENE CROUCH

# Eighth Grade

ELOISE CROWDER  
BOB CRUICKSHANK  
JEANNE DICKINSON  
BETTY ANN DOYLE  
DONALD EDWARDS  
KENNETH EVANS  
DANNY FLOYD  
MAXINE FORD

NADINE FORD  
LOUISE FRANCE  
MARIE GARMAN  
BETTY JEAN GAY  
MILDRED GIBSON  
WILLIAM GOYER  
BARBARA JEAN HALE  
BOBBIE JEAN HALL

LOIS HALL  
MARGARET HARTSELL  
NELLIE HAYES  
BETTY JEAN HAYNES  
ELAINE HAYDEN  
ANN HENRY  
HAZEL HOGAN  
AUDREY HUFFMAN

DONALD HUMPHREYS  
VERA HUNT  
MORVIN HUTCHERSON  
DORIS JEAN HUTCHINS  
JO ANNE HYLTON  
PAUL IDDINGS  
DAVID JAMES  
JOHNNIE JENNINGS

WALLACE KESSLER  
HELEN LAYNE  
ALGIE MARTIN  
JO ANN MAYE  
ALFRED MCCLEARN  
GERALD MILLER  
MORRIS MYERS  
LEWIS NUNN

BOBBY OLIVER  
NAOMI OBENCHAIN  
CHARLOTTE ORRENDER  
GLENN PERIGEN  
BARBARA ANN PETERS  
DAVID PIRRUNG  
CAROLYN PRICE  
JOYCE PRILLAMAN

JAMES PROFFITT  
BEVERLY RAKES  
PATSY RICHARDSON  
BENNY SHORTER  
MARY ANN SIMMONS  
PHYLLIS SINK  
BETTY SKEEN  
MARLENE STEVENS

BEVERLY SPIERS  
BETTY JEAN STANLEY  
GEORGE STULTZ  
ANGELITA SUITER  
DONALD SUTPHIN  
JUDITH TAYLOR  
RICHARD TOWNSEND  
BILLY UMBERGER

THOMAS WADE  
JAMES WAID  
DONALD WALLACE  
DOROTHY WALTERS  
NETTIE MAE WEST  
ED WHITE  
JOHNNY WHITMORE  
MARY ANN WILSON

SHIRLEY ANN WINGFIELD  
BOBBY WINGO  
JOHN WRIGHT  
SHIRLEY WRIGHT  
WAYNE ZIEGLER  
BETTY ZIMMERMAN  
EDWARD ZIMMERMAN



## NOT PICTURED

KENNETH AMOS  
LIONEL ANDERS  
EARL BAILEY  
DONALD BOOKER  
VIRGINIA DELINE  
MARY GARLAND

LOUIS HAMMOND  
JACK HOLLANDSWORTH  
DAVID KEY  
JOHNNIE LAYNE  
KENNETH MANSPILE  
JO ANN MILLER

JAMES NICHOLS  
RAY OWENS  
KENNETH PAINTER  
LEROY PAXTON  
DONALD SCOTT  
KENNETH SINK

DONALD SISSON  
KENNETH SWAIN  
BENNY TICE  
BILLY WILKES  
DONALD WILSON  
KENNETH WYATT

*date as fast, have and happy in  
- wife to a very good  
year as the  
Best wishes Betty  
Best wishes!  
always!  
I think you are very nice!*

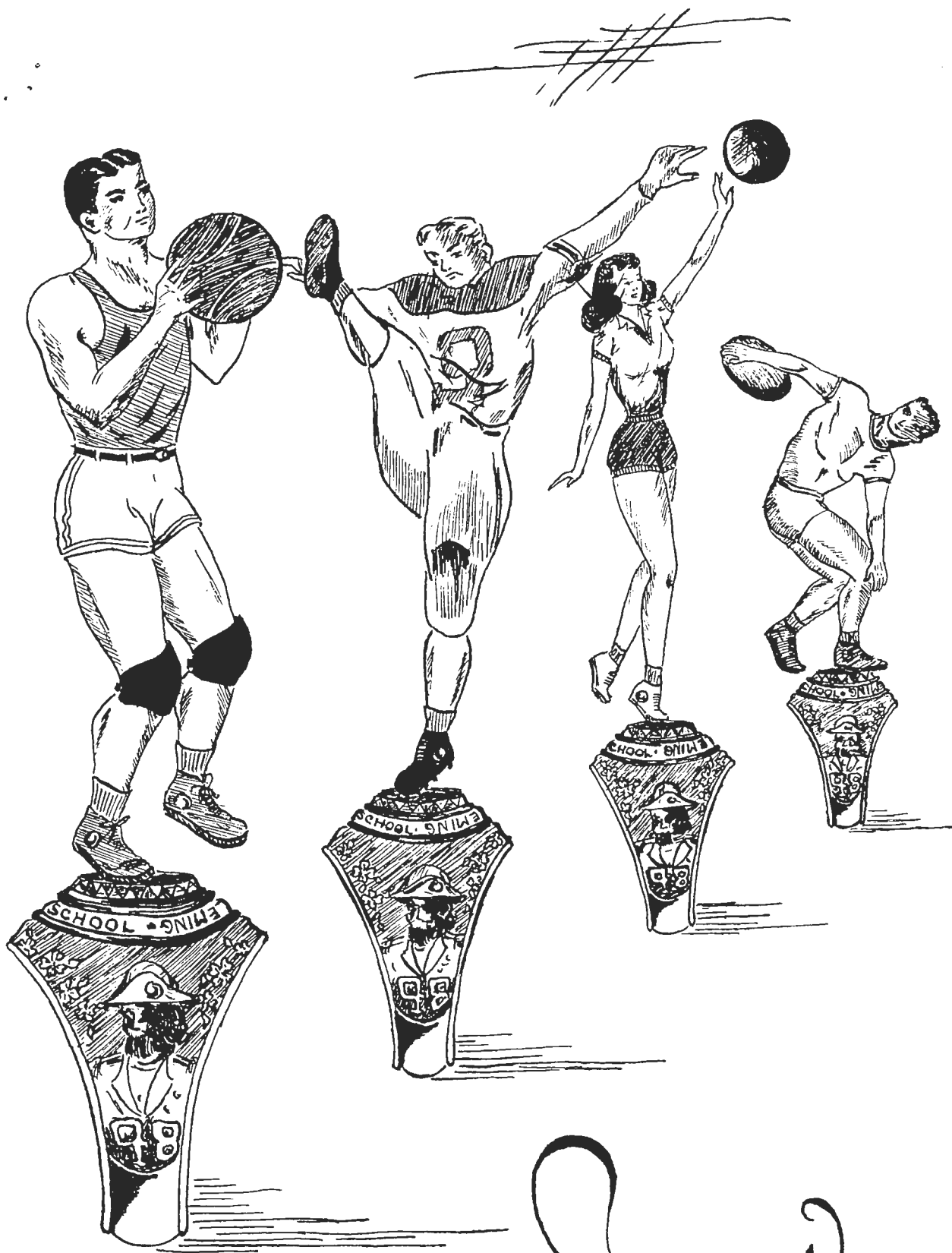
*Late  
of such  
always!  
's Shirley!*

Best of luck always to  
 a great boy. Stay as  
 crazy as you are.  
 Ruthie

## Y-Teen Snapshots

1. "The Dance of the Flowers"—May Day, 1947
2. Y. W. C. A. Guests at Fashion Show—Mrs. Rowan, Mary Jane Powell, Miss Leta Gaplin
3. Junior Dance Chorus
4. Y-Teen Choir
5. Jr. Club Cabinet
6. May Court—1947
7. Louise Akers—Queen of Fairyland
8. Senior Club Cabinet
9. Miss Morris browsing through the Y-Teen Scrapbook.
10. Annual Picnic—"Lock Haven"
11. Senior Dance Chorus
12. Entertainers at Veterans' Hospital
13. Y-Teen Sweethearts
14. Y-Teen Teller Staff
15. Staff Dinner Party at The Southerner
16. Gordon Peters and Ruth Clay in "That Sweetheart of Mine"
17. Anne gives Evelyn the gavel
18. Junior club adopts Rose Jane Powell
19. Anne Cornett—Y-Teen Madonna
20. Worship Scene at Fashion Show—October 17, 1947





# Sports



Buten  
Brilliant

Best of luck to a small  
kid, but who is  
the N - - likes kids  
really I think  
you're ok.  
Best of luck in  
the future  
Daddy



Deihl (Co-Captain)



Lanford



Holcomb



Morgan

# ~ football ~



Wingo



Guards and Pickets

Best of luck  
Sleepy. I  
see you'll  
be football  
next year.  
Daddy



Beeton



Holstein



Urdike



Powell



Centers and Ends



Wright



G. Saul



Murray



Breeden



Peters



Parker



Good luck to  
a fine fellow  
and good basket  
ball player.  
Curt



J. Saul



Williamson



White

# Football



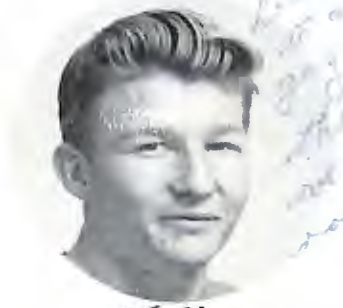
Clark



Backfield



Dunlap



Hall

Let's look  
at a man  
who reminds  
me of the good  
old days.  
Duffy



Coach-Bushkar and Smith.

Inserts - Bottom (L-R) - Managers Spaydon,  
Jones - Top (L-R) - Gisher, Doyle, Smith.



Byrd



Comer



Crowder



Pugh



Davis



Nickols



Carly

~ Basketball ~



D. Byrd



Capt. G. Saul



B. Whiteside



J. Beeton



R. Breeden



Big Five and Coach Smith



J. Saul



J. Slaydon



R. Higgins



Mgr. K. Motley



Mgr. G. Jinsley



E. Perdue



W. Mann



Mgr. B. Holcomb



J. Webber



Coach Smith



Coach Bushkar



W. Dooley

*Best  
Saver*  
Basketball



M. Arrington



Capt. R. Sarver



M. Stanley



V. Buckner



C. Ferrell



Girls Squad and Coach Boyd



N. Callison



M. A. Boston



Mgr. B. Abbott



Mgr. H. Webber



R. Callison



B. Moore



Coach Boyd



J. Umberger



J. Hudson



B. A. Meador



J. Prillaman



J. Weaver

## Football Scores

		<i>Opponent</i>	<i>Fleming</i>			<i>Opponent</i>	<i>Fleming</i>
Jefferson.....		47	6	Hargrave.....		0	0
Pearisburg.....		0	12	Marion.....		0	14
Pulaski.....		7	46	William Byrd.....		6	9
Radford.....		13	13	Blacksburg.....		0	32
Andrew Lewis.....		0	7				
Totals—Opponent.....						73	
				Fleming.....		139	

## Basketball Results

		<i>Opponent</i>	<i>Fleming</i>			<i>Opponent</i>	<i>Fleming</i>
Alumni.....		44	55	Radford.....		42	32
Pearisburg.....		35	56	Rocky Mount.....		35	59
Rocky Mount.....		30	52	Christiansburg.....		25	44
Pulaski.....		28	55	Blacksburg.....		21	60
Christiansburg.....		25	56	Jefferson.....		31	38
Jefferson.....		34	37	Pulaski.....		33	55
Blacksburg.....		26	67	William Byrd.....		40	42
Andrew Lewis.....		38	53	Andrew Lewis.....		32	34
William Byrd.....		41	56	Radford.....		59	64
Totals—Opponent.....						619	
				Fleming.....		915	

## Du Pont Invitational Tournament

Fleming.....	33	Fleming.....	47	Fleming.....	31	Fleming (Champions)
Harrisonburg.....	31	R. E. Lee.....	39	E. C. Glass.....	29	
Waynesboro.....	22					
R. E. Lee.....	33	Andrew Lewis.....	22			
Jefferson.....	35	E. C. Glass.....	27			
Andrew Lewis.....	39					
E. C. Glass.....	51					
Lane.....	25					

## District 6 Tournament

Fleming.....	43	Fleming.....	40	Fleming.....	46	Fleming (Champions)
Christiansburg.....	21	Fieldale.....	18	Martinsville.....	40	
William Byrd.....	31					
Fieldale.....	33	Martinsville.....	47			
Martinsville.....	67	Radford.....	43			
Pulaski.....	46					
Radford.....	68					
Narrows.....	33					

In the State Championship Tournament, Fleming lost in the first round to Glenn Allen, 49—45. Norton High School defeated Glenn Allen in the finals.

## Girls' Basketball Scores

	<i>Opponent</i>	<i>Fleming</i>		<i>Opponent</i>	<i>Fleming</i>
Alumnæ.....	19	22	Christiansburg.....	32	35
Pulaski.....	42	50	Blacksburg.....	30	50
Christiansburg.....	31	34	Pulaski.....	24	34
Blacksburg.....	27	42	William Byrd.....	26	23
William Byrd.....	30	29	Radford.....	28	31
Radford.....	39	24			
Totals—Opponent.....			318		
			Fleming..... 353		

## Colonelettes

In spite of having a practically green team this year, the Colonelettes had a very successful season. They lost only three out of the twelve games played. This placed them in third place for tournament rating.

Sarver, the only squad member with more than one previous year's experience, proved a good captain and a good forward, piling up a total of 200 points.

Arrington, who changed from guard to forward this year, made a good partner for Sarver, as did Stanley.

Buckner also switched positions, from forward to guard, and proved the backbone of the defense crew.

Ferrell and Hudson were able support for Buckner as was Umberger, who traded places with Hudson in the strategic position under the basket.

The other squad members were able sparring partners for the regulars and kept them on their toes. They were Bostian, Prillaman, and Hylton, as guards; Ruth and Nancy Callison and Meador, as forwards.

Abbott, as manager and Webber as her assistant, were very good managers in their business-like ways.

## Colonels

This year a strong quintet was formed around a nucleus of five lettermen who were George Saul, Raymond Breeden, Jack Beeton, Bob Whiteside and Dickie Byrd. There were eight newcomers on the team who gave the strong, high-scoring Colonels good support. These boys were Jimmy Slaydon, James Saul, Ralph Higgins, Joe Webber, Wayne Mann, Wayne Dooley, Eddie Perdue and Ray Otey.

The team handed Fleming its best record in the school's history, winning seventeen out of eighteen games in the regular season, and having a grand total of twenty-three wins out of twenty-five games.

Buddy Holcomb, Kenneth Motley and Lowell Tinsley, as managers, looked after the physical needs of the team, in addition to keeping records and charts up-to-date.

## Boys' Track

<i>100-Yard Dash</i>	<i>220-Yard Run</i>	<i>220-Yard Hurdles</i>	<i>440-Yard Run</i>	<i>880-Yard Run</i>
PARKER	DAVIS	WHITESIDE	G. SAUL	CAMPBELL
J. SAUL	J. SAUL	CROUCH	SEMONES	DAVIS
WILSON	MULLEN		LINKENAUER	
<i>High Jump</i>	<i>Broad Jump</i>	<i>Discus</i>	<i>Javelin</i>	<i>Shot Put</i>
BREEDEN	QUISENBERRY	HOLCOMB	BREEDEN	BEETON
QUISENBERRY	CRAWFORD	HOLSTEIN	COLE	DIEHL
LINKENAUER	CROUCH	MORGAN	BYRD	WILSON

Well hi Sleepy  
 How are you doing - You're the  
 sleepest looking lil fella I've ever seen,  
 you're cut as John and I like you  
 lots. Lots of love, "Fitie."

It's there  
 Be glad, Jack. Late of  
 luck & success & you know  
 your really change it. All else  
 you wanted to be will



FRONT TO BACK: Nada Jane Smith, Sue Munsey, Marlene Anderson, Betty Moore, Miss Thelma Morris, Betty Teichler, Jackie Martin, Betty Joyce Fitzgerald, Evelyn DeMott, Sara Lou Spigle, Nancy Dillon

## Cheerleaders

SUE MUNSEY... Head Cheerleader  
 NADA JANE SMITH... Mascot

JACKIE MARTIN... Secretary  
 MISS THELMA MORRIS... Sponsor

Perhaps a cheerleader's thoughts may be expressed in the words of a poet.

### "THE TIRELESS ATHLETE"

By PARKER LOWELL

I'm glad the game is over, in every joint I ache,  
 With vim and zest I gave my best for Alma Mater's sake.  
 With antics proud  
 I thrilled the crowd.  
 Now well-earned rest I take.  
 I twisted, turned and tumbled, and as the game advanced,  
 For fully sixty minutes relentlessly I danced.  
 Man, woman, child,  
 My grace beguiled.  
 Cheers echoed when I pranced  
 Included in the line-up, friends, no name of mine appears  
 No triple threat am I and yet, I lubricate the gears.  
 No heights I climb,  
 But hark ye, I'm  
 The gal who leads the cheers.

—From *Sports Week*

The squad, under the able and efficient leadership of Sue Munsey, supported both Varsity teams at games and tried to encourage good sportsmanship among students.

In order to know each other better, they had a delightful Christmas party and sponsored a dance during the year.

It was a real treat to have a mascot, Nada Jane Smith.

Best of luck to a  
 real nice boy! Be  
 sweet! Love  
 Batch

### Fleming Snaps

1. Waltz time
2. Taking it easy
3. Come Josephine
4. Going my way
5. Watch the birds!
6. Want a ride?
7. I got the bird
8. No time like slow time!
9. Three of a kind
10. Nine little angels?
11. Snow Queen
12. Andrew Lewis game
13. Colonels win again
14. What a view
15. Just a little better
16. Leading the way
17. Sweetheart of 1948
18. The Three Stooges
19. The good ole days
20. Professor and Satellites

The song best of luck  
 to you, Jack!  
 your future years  
 here at Fleming see  
 you around  
 & relax



Hello Jack.  
 It has been swell knowing  
 a guy like you. and it has been  
 fun being in your home room  
 I hope to see you next year  
 Don't forget all the good times  
 we have had in home room  
 a friend always  
 see you

# Speech Class

"Smilin' Through"—Act II  
William Fleming—NOVEMBER 25  
Andrew Lewis—DECEMBER 9



National Thespian Conference  
University of Indiana

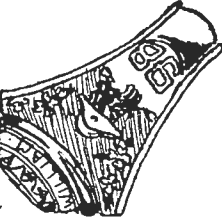
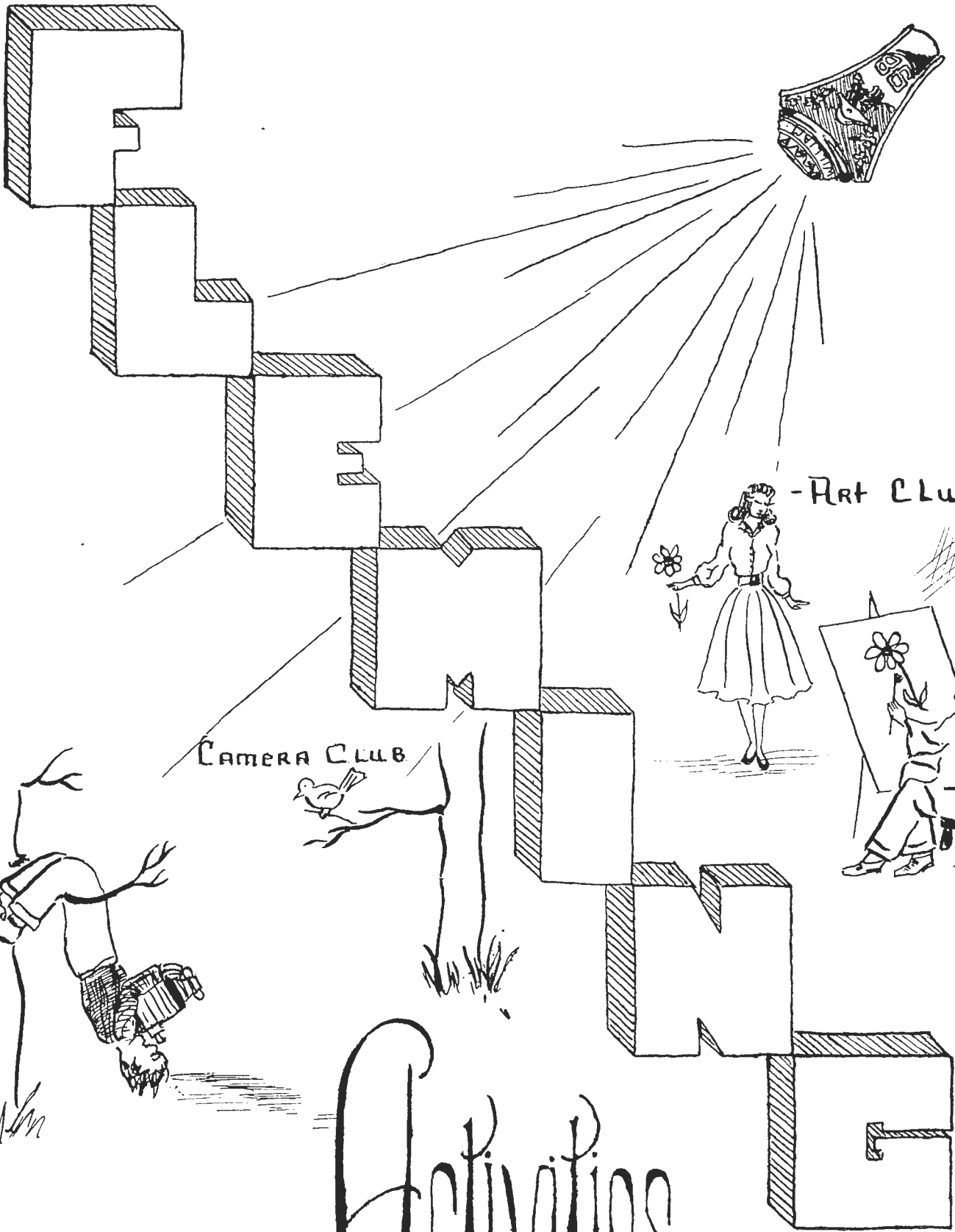
The Fleming group inspects a display in  
the lobby

JUNE 15-22, 1947

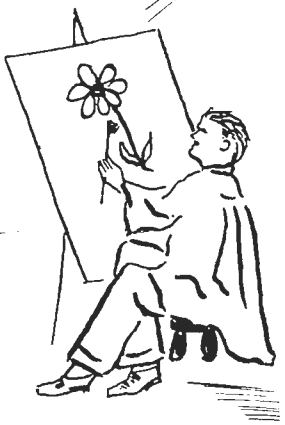
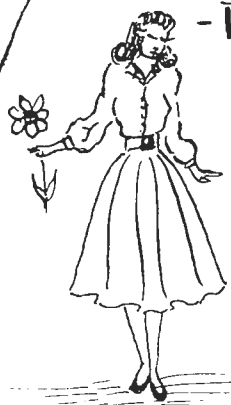


LEFT: Fleming Thespians initiate the famous Brock Pamberton into Troupe 570 backstage at the Academy of Music, after the performance of "Harvey," September 12, 1947.

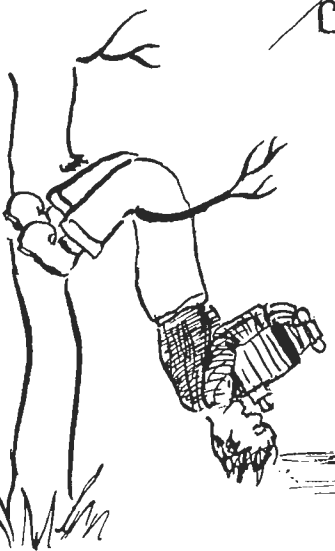
RIGHT: Characters in the costume play, "Fathers in a Gale," Spring, 1947.



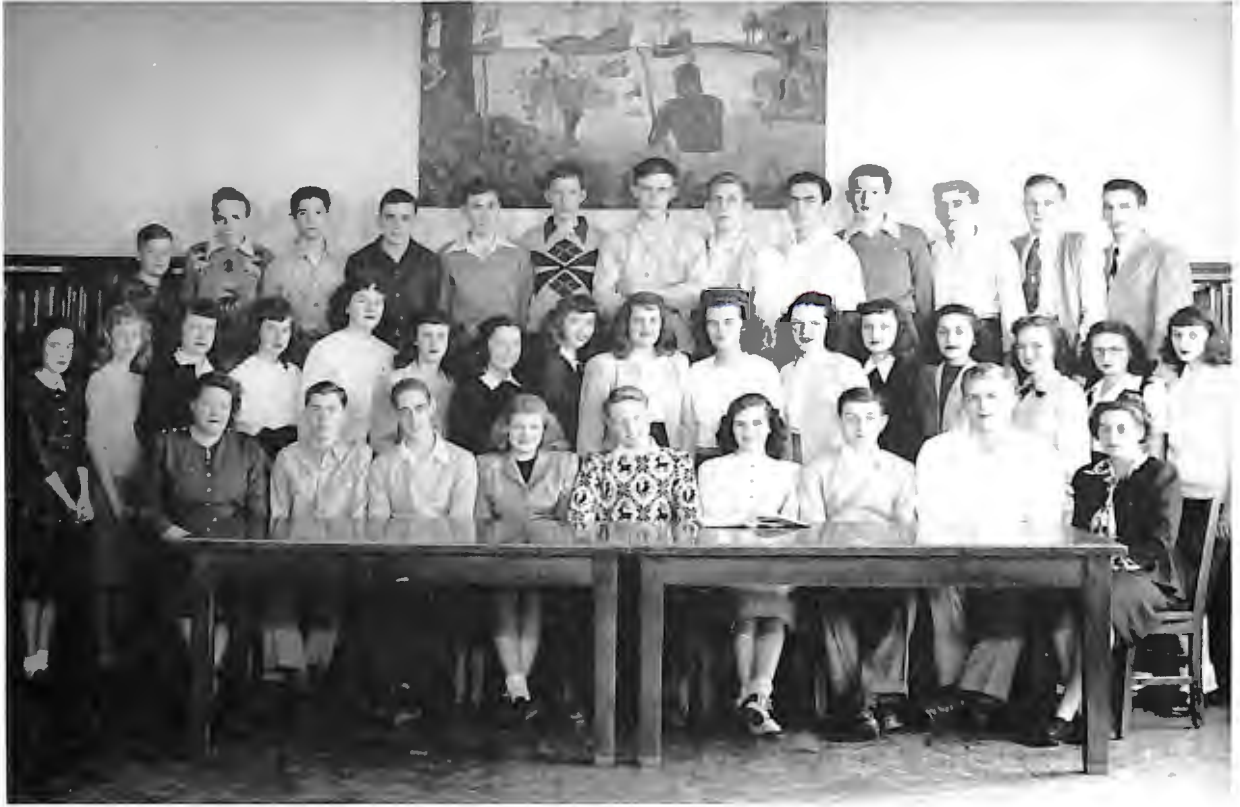
-ART CLUB-



CAMERA CLUB



# Activities



FIRST ROW: Mrs. Roma Gustin, Trevor Turner, Lawrence Murray, Joyce Hale, Kenneth Motley, Mary Alice Bostian, Alan Kane, Jack Lanford, Mrs. Painter  
 SECOND ROW: Shirley Wingfield, Beverly Rakes, Evelyn Booth, Anne Cornett, Patsy Taylor, Betty Rose Teichler, Ola Bishop, Jeanette Semones, Naomi Obenchain, Frances Bulner, Jean Umberger, Yvonne Stone, Dorothy Babalis, Ruth Clay, Helen Burnette, Peggy Argenbright  
 THIRD ROW: Richard Kline, Clifford Journell, Ray Lucas, Clifton Coon, Billy Runyon, Victor Middlekauff, Owen Wade, Lowell Tinsley, Billy Hale, Jimmy Slaydon, Carlton Saul, Roby Patrick, Ralph Martin

The Student Cooperative Association, affiliated with the National Association of Student Councils, serves as the coordinating head of all club activities and major school projects.

The council is made up of all club presidents, home-room representatives and S. C. A. officers, elected annually by the student body. The council meets monthly and S. C. A. officers preside at assembly once each month.

Some of the activities for this year were as follows: Published the annual Student Handbook, sponsored a number of football hops, conducted the magazine campaign, sent representatives to the state convention, filled Red Cross boxes, filled Christmas baskets, conducted Red Cross, Community Fund and March of Dimes drives, held annual Sweetheart Dance, planned and attended the district S. C. A. Convention in Vinton, and presented a microphone to the school.



## Student Cooperative Association

### OFFICERS

- |                    |         |                |
|--------------------|---------|----------------|
| KENNETH MOTLEY     | .....   | President      |
| JOYCE HALE         | .....   | Vice President |
| MARY ALICE BOSTIAN | .....   | Secretary      |
| ALAN KANE          | .....   | Historian      |
| MRS. RUTH PAINTER  | } ..... | Sponsors       |
| MRS. ROMA GUSTIN   |         |                |

# Thespians

## OFFICERS

PATSY TAYLOR..... *President*  
 GORDON PETERS..... *Vice President*  
 NANCY DILLON..... *Secretary*  
 ALAN KANE..... *Treasurer*  
 MRS. GENEVIEVE DICKINSON } ..... *Sponsors*  
 MISS BETSY STONE }



## TROUPE 570 NATIONAL THESPIANS

The curtain never went down on Thespian activities last season. Six days after school closed, twelve of us trouped across several states to the National Convention on the University of Indiana campus. Then followed eight days of wonderful activity and dramatic fellowship, plus quite a few new friends from every corner of the U. S. A.

Three days after school started in September, we saw the Barter production of "Harvey," which featured Brock Pemberton, then trouped backstage and initiated Brock into our own Thespian Club.

Then came "Smilin' Through," with great plans for pioneering by being the first high school group to take a play "on the road." Some of our trips had to be canceled, because of bad weather, but we learned much from this venture.

We are going to try, with the help of the Senior Masquers, the excellent play, "The Great American Family," next month. Meanwhile, there is the one-act contest play, with Gordon, Lowell, Yvonne and Dody in the cast, while Patsy, Mary Joyce, Kenneth and Buddy will student direct, stage and light our production. Our hopeful prayers echo, "On to Charlottesville . . . and victory!"

LEFT TO RIGHT, FROM FRONT: Mary Joyce Matthews, Nancy Dillon, Patsy Taylor, Gordon Peters, Elizabeth Pettit, Mary Anne Petty, Joyce Parrish, Katherine Scordas, Sue Bower, Annie Hambrick, Dolores Whittington, Sue Munsey, Ruth Callison, Betty Teichler, Betty Stone, Joyce Hale, Evelyn DeMott, Dorothy Bible, Rebecca Dudley, Mary Alice Bostian, Betty Joyce Fitzgerald, Yvonne Stone, Miss Betsy Stone, Bobby Semones, Trevor Turner, Buddy Holcomb, Jackie Martin, Phyllis Link, Roberta Wilson, Jean Goodin, Thelma Zimmerman, Nancy Hurd, Lowell Tinsley, Gerald Doyle, Mrs. Genevieve Dickinson, Dennie Early, Billy Hale, Nancy Clement, Virginia Phillips, Jeanine Hammond, Lawrence Murray, Joe Webber, Kenneth Molley, Jack Beeton, Alma Tice, Betty Boyd, Durwood Hill





FIRST ROW: Verna Caricofe, Mary Ann Petty, Marie Arrington, Betty Jean Stone, Sue Bower, Ray Hart, Joyce Hale, Dody Evans, Betty Deyerle, Anna Hambrick, June Mattox, Helen Burnette, Helen Sue Starr  
 SECOND ROW: Miss Gayle Johnson, Elizabeth Pettit, Doralhy Bible, Sue Munsey, Jackie Martin, Frances Thompson, Frances Butner, Peggy Shugart, Merle Stanley, Ruth Callison, Dorothy Hogan, Yvonne Stone, Jean Goodin, Evelyn Booth, Mrs. Elizabeth Powell  
 THIRD ROW: Chandler Townsend, Alma Tice, Patsy Taylor, Mary Lou Criss, Betty Key, Nancy Dillon, Nancy Hurd, Phyllis Link, Roberta Wilson, Peggy Jo Eller, Marlene Anderson, Betty Teichler, Elton Jones  
 FOURTH ROW: George Bowman, Billy Ling, Billy Shanks, Berlin Umberger, Lee Anthony, Jack Baldwin, Gordon Peters, Lawrence Murray, Charles Peterson, Trevor Turner, Alan Kane

The Beta Club is a non-secret service club for senior high schools. A student must maintain a B average for membership and must be a junior or senior.

The first project of the Beta Club was to sponsor the football programs which were sold at home football games. The Beta Club sponsored the organization of the Junior Beta Club. The Senior Club made a contribution to the National Education Fund. Other activities of the year included: Initiation of new members at a "Barefoot Ball," Christmas caroling, attending the Virginia State Beta Convention in Richmond, where the Club presented a stunt in competition with the other Beta Clubs of Virginia, and a picnic in the spring.

## Senior Beta Club

### OFFICERS



- JOYCE HALE.....*President*  
 RAY HART.....*Vice President*  
 DOLORES EVANS.....*Secretary*  
 ROBERTA WILSON.....*Program Chairman*  
 MRS. ELIZABETH POWELL }  
 MISS GAYLE JOHNSON } .....*Sponsors*

*Best of luck to  
a swell fellow, sleeping  
see you next year. Jimmy*

# Junior Beta Club

## OFFICERS

JIMMY SLAYDON.....*President*  
 BETTY DAVIS.....*Vice President*  
 JUANITA SHUFFLEBARGER.....*Secretary*  
 MRS. ELIZABETH POWELL } .....*Sponsors*  
 MISS GALE JOHNSON }



Because of the large number of students who qualified for the Beta Club, the Junior Beta Club was organized. The functions of the Junior Club were the same as those of the Senior Club.

Our projects for the year were the Christmas party, which took place just before the Christmas holidays, an assembly program and a spring variety show.

FIRST ROW: *Miss Gayle Johnson, Barbara Shaffer, Charlotte Key, Joanne Jonas, Betty Davis, Jimmy Slaydon, Juanita Shufflebarger, Joenell Moon, Benny Irvin, Vernelle Mays, Mrs. Elizabeth Powell*  
 SECOND ROW: *Emma Hutchins, Ruth Clay, Jeanine King, Arletha Conner, Betty Wharton, Jeannette Semones, Jean Umberger, Clifton Coon, Ann Crowgey, Elizabeth Creggar, Nancy Wilkinson, Virginia Painter, Alma Shelbourne, Donna Holt, Nancy Kidd*  
 THIRD ROW: *John Criss, Douglas Hart, Tommy Franklin, Linda Evans, Helen Weaver, James Pugh, Mary Ann King, Juanita Hudson, David Townsend, Aubrey Drewry, Bobby Stanley*





FRONT ROW: Miss Betsy Stone, June Maltox, Annie Hambrick, Doris Hairfield, Nancy Wilkinson, Margaret Beckner, Nancy Hurd, Raymond Breeden, Lowell Tinsley, Evelyn Booth, Joanne Jonas, Julia McGhee, Patricia Gates, Dolores Whittington, Nancy Dillon, Joyce Lowry, Emma Hutchins, Mrs. Genevieve Dickinson  
 SECOND ROW: Sue Munsey, Evelyn DeMott, Janet Hamilton, Nancy Hash, Zona Angle, Bonnie Angle, Betty Moore, Ruth Callison, Donna Holt, Betty Teichler, Betty Deyerle, Marlene Anderson, Roberta Wilson, Peggy Eller, Jean Umberger, Anne Middlekauff, Juanita Hudson, Betty Milton, Jeanine Hammond, Dorothy Saunders, Martha Boyd, Juanita Shuffelbarger  
 THIRD ROW: Patsy Taylor, Dorothy Bible, Dolores Evans, Frances Thompson, Mary Joyce Matthews, Betty Boyd, Vernelle Mays, Jean Prillaman, Marie Arrington, Betty Stone, Kathleen Thompson, Virginia Phillips, Phyllis Link, Helen Weaver, Jean Ziegler, Betty Davis, Lena Goad, Katherine Scordas, Joyce Parrish, Thelma Zimmerman, Nancy Clement  
 FOURTH ROW: Louis Frankie, John Oyler, J. H. Caricofe, Clare Wilkerson, Barbara Yeatts, Joenell Moon, Mary Brore, Mary Anne Petty, Joyce Hale, Elizabeth Pettit, Sue Bower, Doris Bailey, Arletha Conner, Lorraine Brillhart, Betty Baltz, Helen Webber, Roby Patrick, Alan Kane, Trevor Turner  
 FIFTH ROW: Bobby Semones, Billy Shanks, Billy Ling, Harold White, Gordon Peters, Jack Beeton, Leon Chatman, Lawrence Murray, Kenneth Motley, Buddy Holcomb, Jimmy Carter, Gerald Doyle, George Bowman, Durwood Hill

The Senior Masque Club has had, perhaps, one of its most active and successful seasons. Almost immediately after the opening of school, a cast was chosen and work begun on "Smilin' Through," featuring Dolores Evans as "Moonyean" and Gordon Peters as "John Cartenet." Following the presentation of the play at Fleming, the cast and crew played a "one-night stand" at Andrew Lewis High School in Salem. Proceeds from the two performances amounted to enough to pay a substantial part of the cost of the new curtains which now grace the Fleming auditorium.

After much deliberation the contest play was decided upon. The play selected was "This Night Shall Pass," and the cast chosen was Gordon Peters, Yvonne Stone and Lowell Tinsley. Later in the spring, a second three-act play was presented.



## Senior Masque Club

### OFFICERS

LOWELL TINSLEY.....	<i>President</i>
RAYMOND BREEDEN.....	<i>Vice President</i>
EVELYN BOOTH.....	<i>Secretary</i>
NANCY HURD.....	<i>Treasurer</i>
MRS. GENEVIEVE DICKINSON.....	<i>Sponsor</i>
MISS BETSY STONE.....	<i>Co-Sponsor</i>

*Best of Luck to you  
Here's hoping to see  
you at*

# Junior Masque Club

## OFFICERS

AUBREY DREWRY.....*President*  
 JIMMY HALE.....*Vice President*  
 DOROTHY SINK.....*Secretary*  
 NANCY CALLISON.....*Treasurer*  
 MRS. CATHERINE LOOMIS } .....*Sponsors*  
 MRS. VIVIAN DICKENSON }



*Fleming  
and the  
"Y"  
in years  
to come*

*Aubrey*

The Junior Masque is a dramatic club for eighth and ninth graders. Members are selected by tryout in order to keep the membership limited to those who are willing to be active and to carry out the club's program.

The monthly meetings consist of short plays, talent shows and guest speakers.

The annual Christmas play, presented in assembly, was a dramatization of Henry Van Dyke's "The Other Wise Man." The entire membership participated in the production either by acting, singing or staging.

The Junior Masque also presented "Tempest in a Teapot" for the Parent-Teachers' Association. In addition to this, the group gave a benefit St. Patrick's Day dance.

FIRST ROW: Lois Butner, Nancy Riley, Ann Henry, Shirley Smith, Jimmy Hale, Aubrey Drewry, Dorothy Sink, Nancy Callison, Betty Jean Stanley, Beverly Spires, Betty Ann Doyle  
 SECOND ROW: Mrs. Catherine Loomis, Dot Wilhelm, Shirley Wingfield, Phyllis Wood, Margaret Hartsel, Rosalie Turner, Virginia Aliff, Willie Riddlebarger, Patty Scaggs, Marlene Stephens, Shirley Wright, Angelita Suiter, Joanne Hylton, Vera Hunt, Mrs. Vivian Dickenson  
 THIRD ROW: Jeannine Crawford, Clarita Cundiff, Charlotte Key, Addison Comer, Billy Cundiff, Hamner Meador, Anthony Altieri, Clarence Snead, Jean Dickinson, Nancy Bowe, Katherine Argenbright, Beverly Rakes





FIRST ROW: Emma Hutchins, Joyce Hale, Elizabeth Pettit, Betty Moore, Evelyn DeMott, Mary Alice Bostian, Sue Munsey, Mary Joyce Matthews, Evelyn Booth, Miss Thelma Morris, Anne Cornett, Linda Evans, Mary Ann Petty, Betty Deyerle, Betty Teichler, Dody Evans, Nancy Hurd, Betty Boyd, Nancy Dillon, Betty Fitzgerald, Jean Parrish, Marilyn Patzold  
 SECOND ROW: Julia McGhee, Thelma Zimmerman, Sara Spigle, Ruth Cliff, Violet Price, Nina Slaydon, Kay Parks, Alma Shelbourne, Lorraine Brillhart, Charlotte Fitzgerald, Barbara Pedigo, Roberta Wilson, Mary Waldron, Betty Mitchell, Doris Hairfield, Pat Gates, Aileen Doss, Beverly Michael, Helen Burnette, Virginia DeWill, Betty Key, Opal Harman, Virginia Davis, Betty Lewis, Lena Goad, Patsy Taylor  
 THIRD ROW: Betty Nolen, Marie Arrington, Jean Prillaman, Margaret Beckner, Nancy Cochran, Carolyn Lyon, Betty Spencer, Shirley Roberts, Joenell Moon, Vernelle Mays, Verna Caricose, Florence Guthrie, Juanita Caldwell, Helen Weaver, Elizabeth Cregger, Joyce Parrish, Katherine Scordas, Veneda Buckner, Jean Umberger, Anne Middlekauff, Betty Milton, Jeanine Hammond, Frances Salmons, Barbara Dent, Beverly Trent, Betty Robertson, Joanne Jonas, Bonnie Angle, Dot Bible  
 FOURTH ROW: Juanita Hudson, Phyllis Link, Jean Ziegler, Jean Ware, June Ware, Ruby Vernon, June Mattox, Virginia Bryant, Charlotte Inge, Joyce Lowry, Betty Meador, Donna Holt, Ruth Callison, Marlene Anderson, Nancy Hash, Meryle Stanley, Clara Ferrell, Barbara Moore, Winnie Vest, Belle Baird, Kathleen Thompson, Dolores Whittington, Helen Webber, Martha Boyd, Juanita Shuffelbarger, Diane Murray, Mary Broce, Imogene Maye, Zona Angle  
 FIFTH ROW: Betty Stone, Letty Kavanaugh, Frances Thompson, Barbara Yeatts, Betty Stultz, Joyce Carson, Joyce Bowles, Juanita Hambrick, Geraldine Sneed, Betty Turner, Claire Wilkerson, Juanita Feazell, Greta Hardie, Naida Gibson, Betsy Fisher, Becky Dudley, Joan Kemp, Phyllis Pedigo, Dorothy Saunders, Claire Abbott, Nancy Clement, Virginia Phillips, Annie Maxey, Peggy Eller  
 SIXTH ROW: Evelyn Shelbourne, Annie Hambrick, Nancy Wilkerson, Anne Crougey, Nedra Morris, Alma Tice, Betty Ashwell, Jackie Martin, Janet Hamilton, Arletha Conner, Doris Bailey, Norva Hardie, Lillie Roberts, Josephine Woodson, Yvonne Stone, Hazel Wills, Dorothy Babalis, Betty Davis, Audrey Doyle, Betty Batts, Dorothy King, Mary Criss

SEPTEMBER 25—Reception  
 OCTOBER 3—Get-Acquainted Party

OCTOBER 17—City-County Fashion Show  
 OCTOBER 24—Halloween Party

NOVEMBER 9—Recognition Service  
 NOVEMBER 18—Anniversary Banquet



## Senior Y-Teens

### OFFICERS

EVELYN BOOTH } ..... *Presidents*  
 ANNE CORNETT }  
 LINDA EVANS ..... *Vice President*  
 SUE MUNSEY ..... *Secretary*  
 MARY JOYCE MATTHEWS ..... *Treasurer*  
 EVELYN DEMOTT } ..... *Co-Program Chairmen*  
 BETTY MOORE }  
 MISS THELMA MORRIS ..... *Sponsor*

# Junior Y-Teens

## OFFICERS

RUTH CLAY.....*President*  
 PATSY RICHARDSON.....*Vice President*  
 VIRGINIA PAINTER.....*Secretary*  
 BETTY ANNE DOYLE.....*Treasurer*  
 MISS THELMA MORRIS.....*Sponsor*



DECEMBER 16—P. T. A. Christmas Program  
 DECEMBER 18—Big-Little Sister Party  
 JANUARY 17—Winter Conference—Y. W. C. A.  
 JANUARY 18—Mother-Daughter Banquet

JANUARY 20—Bowling Party  
 FEBRUARY 28—Leap Year Party  
 MARCH 18—St. Patrick's Day Dinner  
 MARCH 26—Program for Veterans

APRIL 26—Party for Rose Jane  
 MAY 7—May Day  
 MAY 27—Fashion Show  
 MAY 30—Annual Picnic

FIRST ROW: *Jeanne Dickinson, Margie Blevins, Dorothy Sink, Joan Bryant, Betty June Meador, Patsy Richardson, Betty Doyle, Ruth Clay, Miss Thelma Morris, Virginia Painter, Barbara Shaffer, Jeanette Semones, Nancy Callison, Mary Anne Simmons, Jeannine Crawford*  
 SECOND ROW: *Vera Hunt, Barbara Hale, Barbara Peters, Beverly Rakes, Claudine Fulton, Nellie Hayes, Katherine Goad, Lois Hall, Rebecca Dalton, Peggy Cundiff, Charlotte Key, Amayllis Maxey, Barbara Carico, Gloria Basham, Audrey Huffman, Eloise Crowder, Betty Gay, Mildred Gibson, Joanne May, Mary Anne Wilson*  
 THIRD ROW: *Marlene Stevens, Barbara Harris, Marlene Craig, Anne Henry, Mary Ayers, Betty Stanley, Angelita Suiter, Lois Comer, Joan Price, Betty Louise Moore, Dorothy Meadow, Willie Nichols, Willie Riddlebarger, Peggy Hylton, Virginia Huffman, Irene Wool*  
 FOURTH ROW: *Katherine Argenbright, Peggy Argenbright, Martha Vernon, Dot Wilhelm, Patsy Bryant, Ruth Metz, Shirley Wright, Beverley Spires, Joanne Hylton, Betty Skeen, Betty Haynes, Charline Crouch, Judy Taylor, Beulah Boston, Barbara Bryant, Phyllis Wood, Shirley Wingfield, Ola Bishop, Patty Scaggs*  
 FIFTH ROW: *Helen Layne, Clarita Cundiff, Shirley Smith, Rosalie Turner, Doris Hutchins, Carolyn Byrd, Elaine Hayden, Virginia Aliff, Marie Garman, Bobbie Hall, Phyllis Sink, Margaret Hartsel, Betty Zimmerman, Imogene Campbell, Rexine Leffell*  
 SIXTH ROW: *Dorothy Walters, Joanne Miller, Jean Ballentine, Nancy Riley, Maxine Ford, Nadine Ford, Mary F. Garland, Nettie Mae West, Nancy Bowe*





FRONT TO BACK: Jake Doyle, Lowell Tinsley, Forest Morgan, Roby Patrick, Charles Peterson, Gordon Peters, Jimmy Slayton, Mr. W. A. Coulter, Berlin Umberger, George Bowman, Alan Kane, Lawrence Murray, Harold White, Jack Beeton, George Hylton, J. H. Caricofe, Bobby Shively, Ray Hart, Billy Ling, Durwood Hill, Jimmy Carter, Jack Baldwin, Joe Webber, Buddy Holcomb, Kenneth Motley, Earl Rakes, Jack Lanford

The Hi-Y is one of the newer clubs at Fleming, having celebrated its first anniversary this year.

To begin the New Year right, the Club elected officers and took in new members. Meetings were held monthly under the guidance of the faculty advisor, Mr. W. A. Coulter, and the director, Mr. W. A. Allison, who is affiliated with the Y. M. C. A.

A delegate, Kenneth Motley, was elected to attend the State Model Legislature in Richmond on April 9th-10th. He presented a bill before the Mock Assembly to start an office of "Building Commissioner" in the counties throughout the State.

The Hi-Y is gradually increasing its enrollment and promises to become one of the leading clubs at Fleming.



## Hi-Y Club

### OFFICERS

JACK LANFORD.....	<i>President</i>
JIMMY CARTER.....	<i>Vice President</i>
JOE WEBBER.....	<i>Secretary</i>
GEORGE HYLTON.....	<i>Treasurer</i>
MR. ALBERT COULTER.....	<i>Sponsor</i>

# Science Club

## OFFICERS

- RALPH MARTIN . . . . . *President*  
RAY HART . . . . . *Vice President*  
MARY ANNE PETTY . . . . . *Secretary-Treasurer*  
MR. TOM DIXON . . . . . *Sponsor*



The Science Club of William Fleming, under the sponsorship of Mr. Dixon, organized in October with a membership of thirteen.

In addition to the monthly meeting and the projects chosen by each member, trips through various places of interest in the fields of Science were made. The places were American Viscose Corporation, Roanoke Weaving Mill, Norfolk and Western Railway Laboratory, Virginia Mushroom House, Rowe-Jordan Furniture Company and Rainbo Bakery.

We, of the Science Club, appreciate the cooperation of the faculty and the various companies that made these visits possible.

LEFT TO RIGHT: *Mr. Tom Dixon, Earl Rakes, Dan Pirrung, Charles Peterson, Lawrence Murray, Ralph Martin, Lee Anthony, Ray Hart, Mary Anne Petty, Roby Patrick, George Bowman, Chandler Townsend, Joyce Hale, Sue Bower*





FIRST ROW: Jack Beeton, Nancy Dillon, Raymond Breeden, Evelyn DeMott, Betty Boyd, Mary Joyce Matthews, Jimmy Carter, Miss Betsy Stone, Trevor Turner, Mrs. Genevieve Dickinson, Patricia Gates, Julia McGhee, Betty Moore, Nancy Hurd, Betty Joyce Fitzgerald, Dolores Whittington  
 SECOND ROW: Louis Frankie, Joyce Hale, Lowell Tinsley, Dorothy Bible, Patsy Taylor, Yvonne Stone, Doris Hairfield, Sue Munsey, Juanita Hudson, Marilyn Patzold, Martha Boyd, Lena Goad, Joanne Jonas, Mary Anne Petty, Elizabeth Pettit, Annie Hambrick, Aubrey Drewry, John Oylar  
 THIRD ROW: Margaret Beckner, Becky Dudley, Nancy Wilkinson, Betty Teichler, Marlene Anderson, Betty Deyerle, Bette Baird, Donna Holt, Ruth Callison, Nancy Hash, Jeannine Hammond, Betty Milton, Helen Weaver, Jean Umberger, Anne Middlekauff, Vernelle Mays, Lorraine Brillhart, Juanita Shuffebarger, Emma Hutchins  
 FOURTH ROW: J. H. Caricofe, Durwood Hill, Billy Carter, Harold White, Gordon Peters, Roby Patrick, Alan Kane, George Bowman, Lawrence Murray, Kenneth Motley, Buddy Holcomb, Gerald Doyle

The gavel raps sharply, the hubbub of voices dies, card index boxes snap, the first affirmative rises, the negative team grabs pencils. Trevor, Elizabeth, J. H., emphatically *contend*. Chandler, Yvonne, David, earnestly *defend*. The debate has begun. Across the hall Nancy is reading Millay; Patsy tries paragraphs from a great classic; Lawrence polishes a favorite passage. The readers are ready. In another room oratory grows eloquent. Betty is speaking, while Gordon awaits his turn. The speakers prepare. There is a large group waiting, pencils poised, for a list of words, a best speller must be chosen today. Manuscripts are scattered in numerous disarray over the desk in room four. Mrs. Dickinson and Miss Stone bend over them, sighing over misspelled words, disrespect toward punctuation, uncanny plots. *The Beacon* is in the making. Literary season has begun. There are radio talks, community speeches, practice debates. From the outside have come adult speakers from the field of writing, radio reading, debate to inspire us. Martinsville, Radford, Charlottesville! One of these trips may add up to a state championship. We can dream, can't we?

# Literary Club

## OFFICERS

- TREVOR TURNER.....*President*
- JIMMY CARTER.....*Vice President*
- MARY JOYCE MATTHEWS.....*Secretary*
- BETTY BOYD.....*Treasurer*
- MRS. GENEVIEVE DICKINSON } .....
- MISS BETSY STONE } .....



# Choral Club

## OFFICERS

BILL DIEHL . . . . . *President*  
 NANCY DILLON . . . . . *Vice President*  
 HELEN SUE STARR . . . . . *Secretary*  
 GEORGE SAUL . . . . . *Treasurer*  
 MISS IVA WILLIAMS . . . . . *Sponsor*



The William Fleming Music Department is composed of a choir of sixty members, and a credit class of fifty-five members.

Two assembly programs, an operetta, "Bon Voyage," and music for commencement were given.

FIRST ROW: Donna Ray Holt, Virginia DeWitt, Winnie Vest, Betty Teichler, Peggy Frankie, Mary Joyce Matthews, Dolores Whittington, Nancy Dillon, Miss Iva Williams, George Saul, Helen Sue Starr, Betty Deyerle, Diane Murray, Marlene Anderson, Betty Meador, Beverly Michael, Bette Baird  
 SECOND ROW: Josephine Woodson, Betty Boyd, Nina Slayton, Violet Price, Barbara Greig, Meryle Stanley, Vernelle Mays, Jackie Martin, Vivian Pedigo, Joyce Bowles, Evelyn Booth, Betty Milton, Veneda Buckner, Clara Ferrell, Charlotte Fitzgerald, Betty Robertson  
 THIRD ROW: Joyce Lowry, Beverly Trent, Frances Butner, Mary Lou Criss, Dorothy Saunders, Frances Thompsom, Margaret Beckner, Patricia Gates, Marie Arrington, Roberta Sarver, Helen Weaver, Nancy Hash, Sara Lou Spigle, Jean Prillaman, Evelyn Payne, Kay Parks, Betty Jo Balls, Anne Cornett  
 FOURTH ROW: Gerald Doyle, Clayton Clark, Richard Gay, Clarence Howell, Bob Whiteside, Harold White, Billy Carter, Robert Arnold, Oakley Parker, Paul Huffman  
 FIFTH ROW: Nancy Hurd, Mary Alice Bostian, Jeannine Hammond, Jean Goodin, Sue Munsey, Betty Fitzgerald, Ruth Callison, Betty Jean Stone, Joyce Parrish, Katherine Scordas, Juanita Feazell, Joyce Hale  
 SIXTH ROW: Kathleen Thompson, Barbara Moore, Peggy Jo Eller, Leon Chaiman, Lawrence Murray, Raymond Breeden, Dolores Evans, Barbara Yeatts, Elizabeth Cregger, Roberta Wilson





FIRST ROW: Doris Hutchins, Ruth Metz, Lois Butner, Rexine Leffel, Frances Butner, Annie Maxey, Billy Cundiff, Dorothy Hogan, June Crawford  
 SECOND ROW: David James, Amaryllis Maxey, Virginia Phillips, Lena Goad, Mary Criss, Betty Zimmerman, Willie Riddlebarger, Imogene Campbell, Marlene Craig, Barbara Hale, Paul Iddings, Miss Ruth Hutcherson  
 THIRD ROW: Hazel Wills, Claire Basham, Peggy Shugart, Dan Crawford, Jimmy Hale, Bobby Shively, Betty Abbott, Barbara Greig, Louise Frantz

The purpose of the Library Club is to promote and to broaden interest in reading and to train those who might be interested in becoming librarians.

The membership includes students from the eighth through the twelfth grades. The Club meets once a month.

The Club had charge of the Assembly program during Book Week. This year their program was on characters from Bookland. The county librarian, Mrs. Blanche Pedneau, was guest speaker at one of the monthly meetings, and gave an inspiring talk on "Librarianship as a Career." She, also, showed the group the county Bookmobile. The Club visited the Stone Printing Company to see the process of printing a book.

## Library Club

### OFFICERS



- FRANCES BUTNER.....*President*  
 REXINE LEFFEL.....*Vice President*  
 ANNIE MARIE MAXEY.....*Secretary*  
 BILLY CUNDIFF.....*Treasurer*  
 MISS RUTH HUTCHERSON.....*Sponsor*

# Future Homemakers of America

## OFFICERS

MARY CARROS..... *President*  
 PATRICIA GATES..... *Vice President*  
 JEAN PARRISH..... *Secretary*  
 JUANITA FEAZELL..... *Treasurer*  
 MRS. DAILY SLOAN..... *Sponsor*



The purpose of this chapter is to promote a growing appreciation of the joys and satisfactions of homemaking. The senior chapter members have received pins and guards. Some have earned their Junior Homemaker degree. Their project for the year has been to sponsor a junior chapter.

FIRST ROW: *Phyllis Sink, Marlene Craig, Elaine Haydn, Audrey Huffman, Judy Taylor*  
 SECOND ROW: *Nettie West, Mary Ann Wilson, Carolyn Price, Doris Hutchins, Juanita Feazell, Patty Gates, Mary Carros, Betty Jo Batts, Jean Parrish*  
 THIRD ROW: *Mary Lou Criss, Bobby Hall, Ida Jean Campbell, Barbara Cole, Barbara Stanley, Peggy Argenbright, Mrs. Sloan, Lois Butner, Peggy Shugart, Christine Eubank, Clare Basham, Louise Francis*  
 FOURTH ROW: *Naomi Obenchain, Betty Zimmerman, Barbara Greig, Frances Butner, Ann Crowgey, Charlotte Fitzgerald, Lillian Asbury, Hazel Hogan*



*Best of  
 luck to  
 a small  
 boy.  
 Hope to  
 see you  
 next year  
 Christmas  
 H*



SEATED: *Greta Hardie, Virginia DeWitt, Nina Slayton, Jean Parrish*  
 STANDING: *Betty Jo Wharton, Mrs. Ruth Painter, Kenneth Motley, Billy Hale, Raymond Breedon, Billy Shanks, Billy Cundiff, Beverly Michael, Dorothy Bible, Joyce Carson*

The Art Club is composed of members of the art class, and meetings are held during regular class periods. The purpose of the Club is to create and develop interest and appreciation of the art and culture of the past, as well as to compare and evaluate that of today. The contributions of famous artists to the various schools of art were studied, with the view of our being able to recognize the works of these men.

The work of the class has centered around technique in pencil drawings with sketches from nature, the study of anatomy with life sketches, the building of the fashion figure and costume designing, poster work and oil painting.



## Art Club

### OFFICERS

- BILLY HALE.....*President*
- RAYMOND BREEDEN.....*Vice President*
- JOYCE CARSON.....*Secretary*
- BETTY JO WHARTON.....*Treasurer*
- MRS. RUTH PAINTER.....*Sponsor*

# Camera Club

## OFFICERS

- ROBY PATRICK.....*President*  
 JACK BALDWIN.....*Vice President*  
 MELVIN CREASY.....*Secretary*  
 MARY BROCE.....*Treasurer*  
 MR. D. G. BAKER.....*Sponsor*



The Camera Club consists of students interested in photography. It is made up of two groups, one of eighth graders, meeting on Tuesdays; the second, of ninth-twelfth graders, meeting on Fridays. The total membership is forty-eight. The activities of the Camera Club are to learn to develop film, print pictures, enlarge pictures, and the fundamentals of taking a good picture.

In February the Camera Club was in charge of the Assembly program at which time they showed a series of moving pictures.

- FIRST ROW: *Bennie Shorter, Jerry Miller, Ronny Elwanger, Melvin Creasy, Jack Baldwin, Mr. D. G. Baker, Roby Patrick, Mary Broce, Wallace Kessler, Lewis Nunn, Jack Baker*  
 SECOND ROW: *John Wright, Charles Beckwith, Glenn Perigen, Vivian Pedigo, Nancy Hash, Betty Joyce Fitzgerald, John Criss, Bobby Wingo, Kenneth Wyatt, James Proffitt*  
 THIRD ROW: *Charles Peterson, Leon Chatman, George Stultz, Vicior Middlekauff, Everett Holslein, Tommy Franklin, Thomas Wade, Bobby Chitwood, Bobby Green*  
 FOURTH ROW: *Ray Lucas, Berlin Umberger, David Purvis, Don Routon, Durwood Hill, Billy Carter, Harold White*



Hi Jacky,  
 I've been making one of  
 the easiest things in the  
 world. The best of luck  
 and happiness in all the  
 world.  
 Love,  
 Betty



FIRST ROW: Joenell Moon, Majorette  
 SECOND ROW: Patsy Bryant, Majorette; Marilyn Patzold, Majorette; Vernelle Mays, Majorette  
 THIRD ROW: Henry Riley, Jack Adkins, Jack Walls, Raymond Myers, Hamner Meador, Leonard Wingo  
 FOURTH ROW: Mr. W. O. Dilworth, Danny Floyd, Wayne Mattingly  
 FIFTH ROW: Norris Bryant, Dorothy Walters, Donald Love, Joe Adkins, Harold White

The William Fleming Band is directed by Mr. W. O. Dilworth with Miss Iva Williams, serving as assistant director.

The Band consists of eighteen members and four drum majorettes.

They presented three assembly programs and one night performance during the year and participated in the May Music Festival.



# Band

## SPONSORS

- MR. W. O. DILWORTH . . . . . *Director*
- MISS IVA WILLIAMS . . . . . *Assistant Director*

# The Colonel News

## OFFICERS

YVONNE STONE..... *Editor*

DOROTHY BIBLE..... *Assistant Editor*

THELMA ZIMMERMAN..... *Business Manager*

MISS LOU ALICE HILL..... *Sponsor*



*The Colonel News* received a challenge when the '46-'47 *Colonel* won the first-place award at the S. I. P. A. meeting held in Lexington. The staff has tried this year to make *The Colonel News* an even better paper.

Many changes have been made. The paper is now published by the Journalism Class with the help of some of the students not in the Class.

The Journalism Class sponsored the second assembly program in a kick-off campaign for subscriptions.

The Halloween issue of the paper carried a surprise for the students and the biggest improvement the paper has made; that of three columns instead of the usual two. The paper has continued to be published with three columns.

The Home-Coming issue instituted mimeographing in color, which has been done in several succeeding issues.

On December 31st, the Class sponsored a Midnight Masquerade which was held in the gym. In May, an outing was held for members and their dates.

It is hoped that the student body has enjoyed *The Colonel News* this year as much as the staff has enjoyed bringing it to them.

SEATED, LEFT TO RIGHT: *Yvonne Stone, Alma Tice, Marie Arrington, Joyce Carson, Marjorie Blevins*  
STANDING, LEFT TO RIGHT: *Dorothy Bible, Betty Milton, Barbara Dent, Margaret Beckner, Anne Wilbourne, Betty Joyce Fitzgerald, Verna Caricofe, Thelma Zimmerman, Gerald Doyle, Lowell Tinsley, Miss Lou Alice Hill, Rexine Leffel, Roberta Wilson, Barbara Bryant*  
NOT PICTURED: *Betty Ashwell, Billy Dent, Billy Ling, Zealous Newcomb, Mary Alice Bostian, Dorothy Sink, Shirley Wingfield, Phyllis Wood*





*Editor*  
ALAN KANE

## The 1948 Colonel Staff



*Assistant Editor*  
PATSY ANN TAYLOR

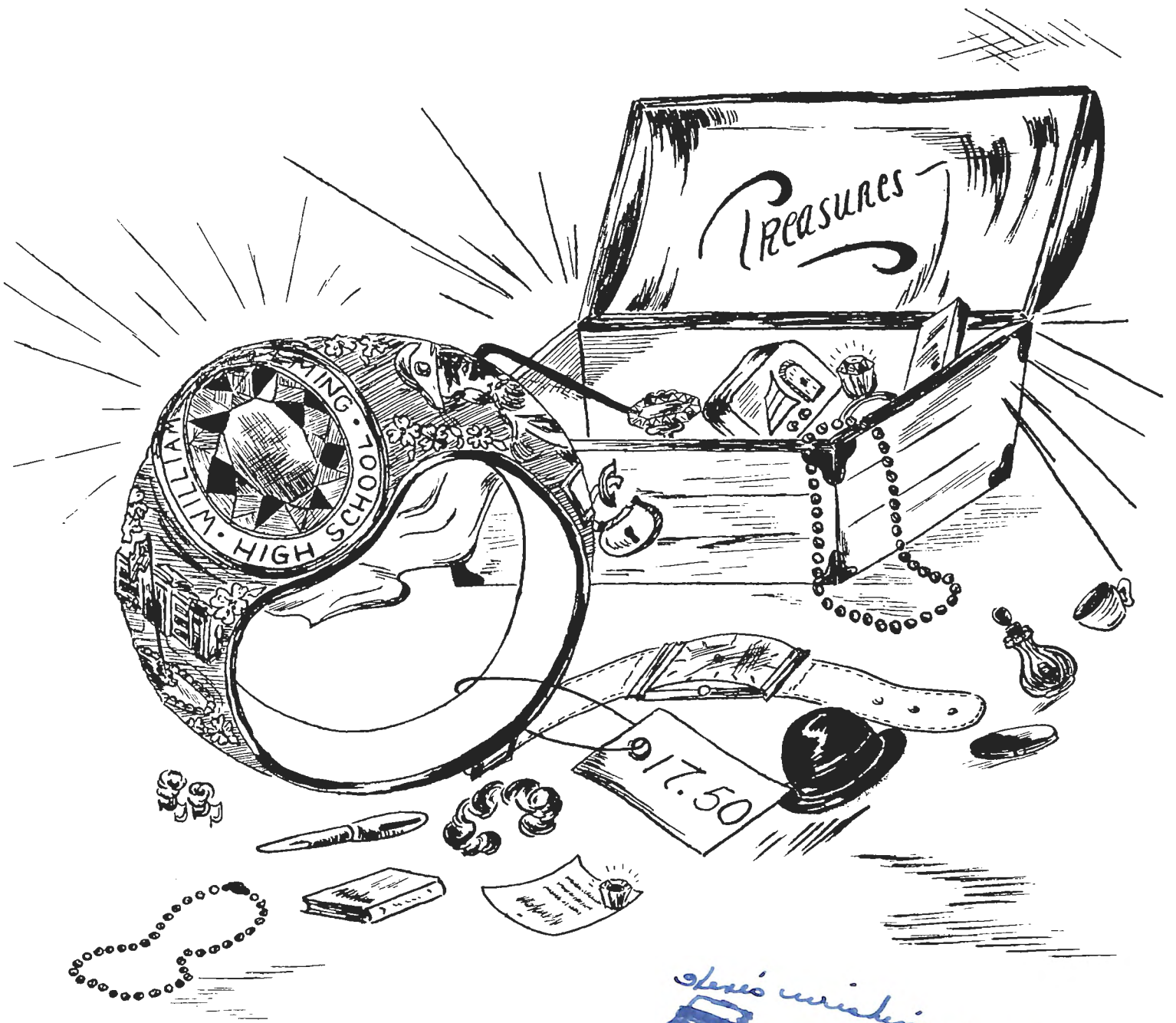
We, the 1948 Annual Staff, proudly present the new COLONEL to you. The book is you and your school. These reflections, that we have tried to put on paper, cannot possibly tell all; however, they will show some phases of our school activities—a living Fleming in 1948.

Assembling these pages has been fun as well as hard work. You have helped through your cooperation and support; therefore, you should prize the book highly.

Please read and remember!



SEATED, LEFT TO RIGHT: Jeannine Hammond, Typist; Sue Munsey, Typist; Mrs. Kirkwood, Sponsor; Berlin Umberger, Business Manager; Evelyn Booth, Feature Writer; Kenneth Molley, Artist; Joyce Hale, Feature Writer  
STANDING, LEFT TO RIGHT: Buddy Holcomb, Sports Editor; Betty Boyd, Sports Writer; Lawrence Murray, Sports Writer; Patsy Taylor, Assistant Editor; Dolores Evans, Feature Writer; Joe Webber, Feature Writer; Billy Shanks, Artist; Jimmy Carter, Feature Writer; Trevor Turner, Feature Writer; Ray Hart, Feature Writer; Betty Meador, Feature Writer; Mary Peltz, Feature Writer; Mary Joyce Matthews, Feature Writer; Dolores Whittington, Feature Writer



*Love's wishing a sweet  
day late & luck  
Love  
dot*

# Advertisements

# PARSELL'S PIE SHOP

ROANOKE, VIRGINIA



CALL US FOR YOUR BIRTHDAY AND WEDDING CAKES

*At our drive-in plant on Williamson Road you can get rolls,  
biscuits and your favorite pastries and pies. We always feature  
pies with whipped cream*

We are selling more than 30,000 of our "Tasty Cream Donuts" per day

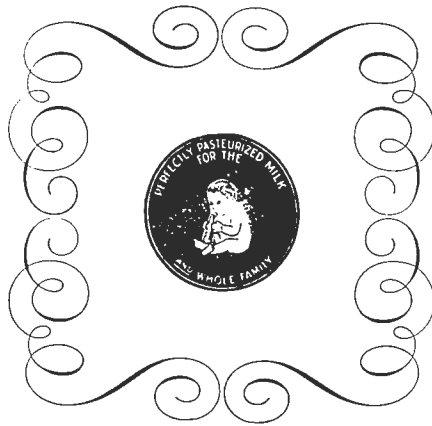


1414 Williamson Road

--

309 Henry Street

FOR YOUR DAIRY PRODUCTS  
DIAL 2-3461



ROANOKE DAIRY  
AND ICE CREAM  
COMPANY

SODAS

SANDWICHES

## Gill's Hamburger House

*The Home of Delicious Hamburgers*

CURB SERVICE

3105 WILLIAMSON ROAD



*Hi Jack,  
You and Beton have something  
in common, dont you? (Jack) Its  
really going to be awful leaving  
Fleming and all the cute little  
boys and girls you have  
a leaving emotionally. With it, I'm  
sure you'll go places and at Fleming.  
I had a lot of fun as did you  
have. as much fun as I did had.  
Love  
Janey*

Continually Timely . . .

**THE ROANOKE TIMES**

**The Roanoke World-News**

RADIO STATION WDBJ

---

**Times-World Corporation**  
ROANOKE, VIRGINIA

FOR BEST BAKING RESULTS

ALWAYS USE

ENRICHED

*METROPOLITAN*

*LIGHT WHITE*

FLOURS

**Roanoke City Mills, Inc.**

ROANOKE, VIRGINIA

*The South's Largest and Finest Flour and Feed Mills*

*Compliments of*

*Kay's Ice Cream*

*Taste the Difference*

IT PAYS TO BUY KAY'S

*Heironimus  
of Roanoke*

*de meane*

*we have enjoyed being in your school with you trust you can. You are a wonderful guy. see you next year.*

*Matthew  
Blair*

Compliments of

THE HOTEL ASSOCIATION OF ROANOKE, VIRGINIA

HOTEL ROANOKE

365 ROOMS

"A Modern Air-Conditioned Version of an Old English Inn"

KENNETH R. HYDE      GEORGE L. DENISON  
*Associate Managers*

HOTEL PATRICK HENRY

300 ROOMS

RUSSELL SEAY  
*Manager*

HOTEL PONCE DE LEON

200 ROOMS

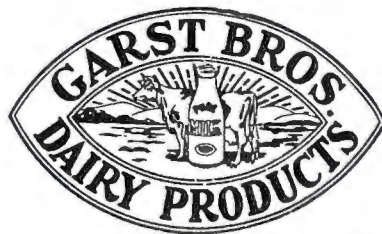
GARLAND W. MILLER  
*Manager*

HOTEL BIG LICK

105 ROOMS

RAY A. CHAMBERS  
*Manager*

*For Better Health Use the Best*



LABORATORY CONTROLLED

"ROANOKE'S MOST MODERN DAIRY"

Lot of Lots

Breeden Motor Co.

EXTENDS

CONGRATULATIONS

TO THE

SENIOR CLASS

OF

“48”

*Compliments of*

Dobson and Company

GENERAL MERCHANDISE

INCLUDING

*Fire Salvage and Bankrupt Stock*

15 E. CHURCH AVENUE

Best of  
luck to a  
sweet  
guy!  
Mary Margaret

Good luck  
to a sweet  
but crazy  
boy.

Shirley  
Smith

Compliments of

MARTIN CINDER BLOCK COMPANY

30th Street and Shenandoah Avenue, N. W.

Phone 2-0416



"Jack"  
 I have enjoyed  
 being in your  
 home. Naomi. Hope  
 you may have a  
 wonderful future.  
 Love,  
 Peg

LEE RESTAURANT

GOOD FOOD

WILLIAMSON ROAD

(Across from Lee Theater)



*The House of Fine Furs*

HENRI KESSLER, INC.

119 WEST CAMPBELL AVENUE

ROANOKE, VIRGINIA

H. G. COLE GARAGE

*Day and Night Towing Service*

Phone—Shop 3-2462 Phone—Home 2-1819

1860 WILLIAMSON ROAD

A GOOD DRIVER'S YARDSTICK

*"The Golden Rule"*

ROANOKE AUTOMOBILE DEALERS  
 ASSOCIATION

URGES YOU TO

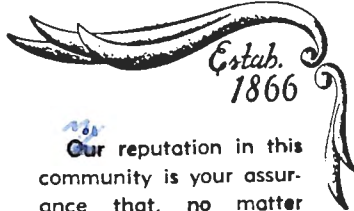
BE SENSIBLE — MAKE DEATH WAIT IN '48

*Drive Carefully*

*Compliments of*  
HARDIE BROTHERS  
SERVICE STATION

*Compliments of*

*B. Forman Sons*



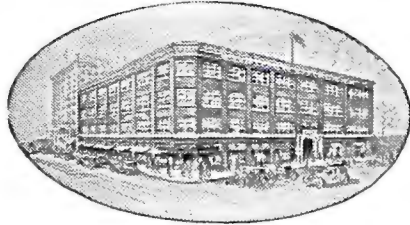
*Bobby* Our reputation in this community is your assurance that, no matter what your requirements, *Oakey* will be able to meet those requirements in a manner which will meet with your complete approval.



*Compliments*

*of*

MICHAEL'S  
BAKERY



### To High School Graduates

Whatever you plan to do after graduation—whether you plan for college or business—your mental development must continue.

The National Business College is a distinctive, private school of professional grade. Day and evening courses prepare high school graduates for immediate earnings. Many graduates who have acquired experience are now presidents, vice-presidents, cashiers, secretaries, treasurers and controllers of large corporations—others are in successful accountancy practice.

The selection of a commercial school for your business training is of vital importance to you. Write for beautifully illustrated catalog.

**National Business College**  
Roanoke, Virginia

Accredited by National Association of Accredited Commercial Schools.

## DE LUXE LAUNDRY AND DRY CLEANERS

*Where Service is Prompt*

PHONE 2-3133

2008 WILLIAMSON ROAD

## CALDWELL-SITES CO.

*Office Equipment—Office Supplies*

STATIONERY

MIMEOGRAPHS

GIFTS

ROANOKE, VIRGINIA

*Compliments of*

# LEE THEATRE

*“The Showplace of Roanoke”*

RENDEZVOUS FOR THE COLONELS

DIAL 3-1571

**ALWAYS THE BEST IN ENTERTAINMENT**

FIRST FEDERAL SAVINGS AND  
LOAN ASSOCIATION  
OF ROANOKE



34 WEST CHURCH AVENUE

ROANOKE NEHI  
BOTTLING CORPORATION

NEHI ROYAL CROWN COLA

PAR-T-PAK

PHELPS & ARMISTEAD

Incorporated

*Complete Home Outfitters*

FURNITURE AND ELECTRICAL  
APPLIANCES

111-113 Campbell Avenue, West

ROANOKE, VA.

JOHNSTON-VEST  
ELECTRIC CORPORATION

315 West Campbell Avenue

Dial 3-4407

ROANOKE, VIRGINIA

Kelvinator Home Appliances  
Crysler-Airtemp Air Conditioning

AND

Automatic Oil Furnaces



# Butner Plumbing and Heating Co.

*"22 Years Serving Roanoke and Vicinity"*

We Sell and Service All Kinds of Plumbing Appliances and  
Heating Equipment

STANDARD AND CRANE ENAMELWARE  
GAS AND ELECTRIC APPLIANCES

CROSLY—SHELVADOR REFRIGERATORS  
RADIOS — APEX WASHERS AND SWEEPERS  
ELECTRIC STOVES — STOKERS AND OIL BURNERS  
ELECTRIC AND GAS WATER HEATERS

1610 WILLIAMSON ROAD      DIAL 2-3118      ROANOKE, VIRGINIA

C. E. Butner, *Owner*



JOHN NORMAN, INC.

FINE CLOTHING  
MEN AND BOYS

*"Step into Style"*

*Congratulations!*

*And May You Enjoy*



*Dairy Products Always*

CLOVER CREAMERY  
COMPANY, INC.

Dial 3-3603

**AIRHEART-KIRK**

MEN'S CLOTHING SINCE 1902

107 W. Campbell Avenue  
ROANOKE, VIRGINIA

**ACME TYPEWRITER COMPANY**

PORTABLES


TYPEWRITER RENTALS

ROYALS


116 WEST CHURCH AVENUE

ROANOKE, VIRGINIA

<p>WILLIAMSON ROAD ESSO STATION</p> <p><i>Lubrication - Washing - Waxing</i></p> <p>TIRE AND BATTERY SERVICE ROAD SERVICE</p> <p>Williamson Road at Tenth Street On U. S. 11 and 220</p> <p>DIAL 3-3113 ROANOKE, VA.</p>	<p>PAINTER'S PHARMACY</p> <p>2012 WILLIAMSON ROAD</p> <p>DIAL 2-2826 ROANOKE, VA.</p> <p><i>Your Drugstore</i></p>
<p>No. 67 R. M. A.</p>	<p>COATS, SUITS, DRESSES PHONE 3-4131</p> <p>WORTH'S</p> <p>311 SOUTH JEFFERSON STREET ROANOKE, VIRGINIA</p> <p><i>Sportswear "Style Plus Value"</i></p>
<p>ROANOKE STAMP AND SEAL CO.</p> <p>P. O. Box 1049</p> <p>ROANOKE, VIRGINIA</p>	<p><i>Compliments of</i></p> <p>BURNS, INC.</p> <p>11 SOUTH JEFFERSON STREET</p>
<p>SAM'S</p> <p><i>For</i></p> <p><i>Durable Work Clothes and Shoes</i></p> <p>304-306 Nelson Street Roanoke, Va. DIAL 2-7300</p> <p>114 Main Street Salem, Va. Phone 671</p>	<p>WILLIAMSON ROAD PHARMACY</p> <p>Corner Williamson Road and Grace Street</p> <p>ROANOKE, VIRGINIA</p>

<p style="text-align: center;"><i>Compliments of</i>  <b>PATTERSON DRUG CO.</b>  Henry Street and Church Avenue  DIAL 9244  <b>PROMPT SERVICE</b></p>	<p style="text-align: center;"><b>W. T. HYLTON</b>  <i>Groceries—Fresh Meat  Feed—Hardware  Delivery</i>  ROUTE 1                      DIAL 4139</p>
<p style="text-align: center;"><b>COLONIAL TOURIST HOME</b>  MRS. W. T. WINGFIELD  2614 Williamson Road  Two Miles North of Roanoke,  on U. S. 11 and 220  DIAL 2-3611              ROANOKE, VA.  GARAGE   MODERN BEDS   BATHS</p>	<p style="text-align: center;"><b>NATALIE SHOPPE</b>  <i>Sponsoring Smart Apparel for  the School Miss</i>    ROANOKE, VA.</p>
<p style="text-align: center;"><b>BARGER BROTHERS</b>    COAL AND WOOD DEALERS    QUALITY   SERVICE   PRICE    Liberty Road, Williamson Road  ROANOKE 12, VIRGINIA</p>	<p style="text-align: center;">OFFICE PHONE 6003    RES. PHONE 2-2571    <b>G. E. TROUT &amp; SONS</b>  <i>Contractors and Builders</i>    418-19 BOXLEY BUILDING    ROANOKE, VIRGINIA</p>
	<p style="text-align: center;"><b>A. H. TEICHLER</b>  STALL 4, CITY MARKET    FRESH AND CURED  MEATS—POULTRY    DIAL 7255</p>

<p style="text-align: center;"><i>Student Instruction</i></p> <p style="text-align: center;">MARTIN-O'BRIEN FLYING SERVICE, INC.</p> <p style="text-align: center;"><i>"For G. I.'s and Students"</i></p> <p style="text-align: center;">PHONE 3-2022</p>	<p style="text-align: center;"><i>Compliments of</i></p> <p style="text-align: center;">BOWMAN'S BAKERY</p> <p style="text-align: center;">Bakers of Sunbeam Bread</p>
<p style="text-align: center;">ORANGE-CRUSH BOTTLING COMPANY</p> <p style="text-align: center;">1013 Williamson Road ROANOKE, VIRGINIA DIAL 2-8054</p>	<p style="text-align: center;"><i>Compliments of</i></p> <p style="text-align: center;">THE FLOYD WARD SCHOOL OF DANCING</p> <p style="text-align: center;">27½ KIRK AVENUE DIAL 2-3033</p>
<p style="text-align: center;"><i>Compliments of</i></p> <p style="text-align: center;">VIRGINIA FOODS, INC.</p> <p style="text-align: center;">Wholesale Groceries</p> <p style="text-align: center;">"MISS VIRGINIA" CANNED FOODS DIAL 2-3196</p>	<p style="text-align: center;">SAM FINLEY, INC.</p> <p style="text-align: center;">FINLEY METHOD</p> <p style="text-align: center;">Asphalt Roadways</p> <p style="text-align: center;">1615 CLEVELAND AVENUE, S. W. ROANOKE, VIRGINIA</p>
<p style="text-align: center;">SEE THE ROANOKE FARM SUPPLY CENTER</p> <p style="text-align: center;">FOR YOUR SUPPLIES</p> <p>FEED                      FERTILIZER SEED                      POULTRY EQUIPMENT</p> <p>29 EAST CHURCH AVENUE      DIAL 2-1823</p>	<p style="text-align: center;">Diamonds—Watches—Silverware</p> <p style="text-align: center;">DIAL 2-0953</p> <p style="text-align: center;"><b>BARR BROTHERS</b> FRIENDLY JEWELERS</p> <p style="text-align: center;">4 E. CAMPBELL—Just off Jefferson</p> <p style="text-align: center;">Terms as low as \$1.25 a week</p> <p style="text-align: center;">JEROME BARR, Mgr. ROANOKE, VA.</p>

<p style="text-align: center;"><i>Compliments of</i>  <b>DAVIDSON'S CAMP</b></p> <p style="text-align: center;">DIAL 2-9488</p> <p style="text-align: center;">ROANOKE, VIRGINIA</p>	<p style="text-align: center;"><b>LLOYD'S MARKET</b></p> <p style="text-align: center;"><i>For the Finest in Foods</i></p> <p style="text-align: center;">903 WILLIAMSON ROAD  DIAL 2-6657</p> <p style="text-align: center;"><i>We Deliver</i></p>
<p style="text-align: center;">Where Clothing and Furnishings  Are Just Different Enough to  Make Them Distinctive</p> <p style="text-align: center;"><i>Fox-Hunt-Loyd</i></p>  <p style="text-align: center;"><b>CLOTHING, INC.</b></p> <p style="text-align: center;">CORNER KIRK AVE. AND FIRST ST., S. W.  PHONE 2-2421</p>	<p style="text-align: center;"><b>PRESTO CAFE</b></p> <p style="text-align: center;"><i>Where Only Good Food  Is Served</i></p> <p style="text-align: center;">15 East Campbell Avenue</p>
<p style="text-align: center;">For Complete Beauty Service</p> <p style="text-align: center;"><b>CANDLE-GLO BEAUTY SALON</b></p> <p style="text-align: center;">2101 Williamson Road</p> <p style="text-align: center;">DIAL 2-3734      ROANOKE, VA.</p>	<p style="text-align: center;"><b>ELECTRIC SERVICE  CORPORATION</b></p> <p style="text-align: center;"><i>"The Home of General Electric"</i></p> <p style="text-align: center;">28 WEST CHURCH AVE., ROANOKE, VIRGINIA</p> <p style="text-align: center;">DIAL 2-7730</p>
<p style="text-align: center;"><i>Compliments of</i></p> <p style="text-align: center;"><b>RICHARDSON-WAYLAND  ELECTRICAL CORPORATION</b></p> <p style="text-align: center;">122 WEST CHURCH AVENUE</p> <p style="text-align: center;"><i>"If it's electrical—We sell it"  "If it's electrical—We repair it"</i></p> <p style="text-align: center;">PHONE 6266</p>	<p style="text-align: center;"><b>BAKER BROTHERS</b></p> <p style="text-align: center;"><b>CASE FARM MACHINERY</b></p> <p style="text-align: center;"><b>SALES — SERVICE</b></p> <p style="text-align: center;">Home Freezer—Wilson Milk Cooler</p> <p style="text-align: center;">PHONE 3-2638</p> <p style="text-align: center;">3213 Williamson Road  ROANOKE, VIRGINIA</p>

<p>ROANOKE WIENER STAND</p> <p><i>Hot Dog King</i></p> <p>25 East Campbell Avenue</p>	<p>JEFFERSON ELECTRIC COMPANY, INC.</p> <p>23 Franklin Road</p> <p>DIAL 5175</p>
<p>WILLIAMSON ROAD PHOTO SHOP</p> <p>A Good Photo Service at Reasonable Prices</p> <p>DIAL 3-0520      ROANOKE, VA.</p> <p><i>"Our Business is Developing"</i></p>	<p><i>Compliments of</i></p> <p>L. F. ROSE</p> <p>CITY MARKET</p>
<p>ALEX Y. LEE</p> <p><i>Expert Lock and Gunsmiths</i></p> <p>101 Salem Avenue, West</p> <p>DIAL 9832      ROANOKE, VA.</p>	<p><i>Compliments of</i></p> <p>F. P. MURRAY</p> <p>MEATS</p> <p>STALL 3, CITY MARKET</p> <p>DIAL 5801</p>
<p>BUSH-FLORA SHOE COMPANY</p> <p>39 Years Serving You</p> <p>SHOES OF DISTINCTION</p> <p>130 Campbell Avenue, West</p> <p>DIAL 2-1955      ROANOKE, VA.</p>	<p>PROPST-CHILDRESS SHOE CO.</p> <p><i>"Beautiful Shoes" — Bags</i></p> <p>PHONE 9269</p> <p>ROANOKE, VIRGINIA</p>

Best of luck to  
a good kid,  
but who in the  
hell likes kid's

Lots of love  
to a rowdy-dandy kid.  
-Daddy

A pal  
always  
Rowdy-Dandy  
P.S. Don't forget  
3<sup>rd</sup> period.

HARRIS SERVICE STATION  
Quality Motor Fuels  
DIAL 2-9722 WILLIAMSON ROAD  
Tires and Batteries

FALLON FLORIST, INC.  
FLOWERS  
*The Appropriate Gift for all Occasions*  
23 WEST CHURCH AVENUE  
DIAL 7709 OR 7700

LUCAS & FRALIN  
GENERAL CONTRACTORS  
1218 Williamson Road  
DIAL 7579 ROANOKE, VA.

C & H PRODUCE  
COMPANY, INC.  
WHOLESALE  
FRUITS AND VEGETABLES  
214 Nelson Street, S. E.  
PHONE 6759

THE GREATER  
GLENN-MINNICH'S  
*Clothes for the Younger, Young Man*  
*Hi-School Shop*  
3d Floor  
108 WEST CAMPBELL AVENUE

CORNETT SCHOOL  
OF BUSINESS  
INDIVIDUAL ATTENTION TO EACH  
STUDENT'S PROGRESS  
17 FRANKLIN ROAD DIAL 2-6401

*Courtesy of*  
BIG 4 BARBER SHOPS  
S. J. WRIGHT  
E. T. JONES

Best of luck to a swell  
guy. Hope to see you  
next year.

Lots of  
luck to a  
nearly-lawyer  
Charles Hall

MORGAN-EUBANK FURNITURE  
CORPORATION

"THROUGH THE BLOCK"

14 EAST CAMPBELL AVENUE

*Patsy Hardie* BECAUSE

"Style Comes First"

MITCHELL  
CLOTHING  
ROANOKE VIRGINIA



MATTHEWS OIL CO.

GAS — OIL — TIRES — BATTERIES  
SPECIALIZED LUBRICATION AND  
WASHING

*Also*

LUNCHEON SERVICE

Short Orders — Drinks  
Sandwiches and Ice Cream

303 E. CAMPBELL AVENUE

Phone 2-9461

VIRGINIA PAPER  
AND CHEMICAL  
COMPANY, INC.

*Quality Supplies and Equipment*

Dial 4341

133 SALEM AVENUE, WEST

ROANOKE, VIRGINIA

R. B. GAY & CO.

*Railroad Contractors*

ROANOKE, VIRGINIA

R. B. GAY      S. F. LANFORD

C. A. A. Approved Station No. 376

STINSON

*Sales and Service*

All Types Used Aircraft for Sale

VIRGINIA AIRMOTIVE

Woodrum Field

ROANOKE, VIRGINIA

*"Sleepy" I don't know you very well but I have seen you around a lot. You're really sumpin' nice! Be good and stay nice just like you are. P.S. I like to see you and Betty dance down the street."*

O. G. HOFFMAN, *Manager*—PHONE 2-3825

**VIRGINIA FOUNDRY CO.**

HIGH QUALITY ALUMINUM, BRASS,  
GRAY IRON CASTINGS

*Equipped for Day or Night Service*

Machine Castings, Stove and Furnace Parts  
Grates for All Types Boilers

1001 NINTH STREET, N. E.

P. O. Box 445      Roanoke 3, Virginia

COMPLIMENTARY

*Compliments of*  
**ARCHIES SEA FOOD  
TAVERN**

COMPLIMENTARY

Nearing Our Sixtieth Year

*From Acorns Big Oaks  
Grow*

It's Quality First When Purchased  
from Oak Hall

*Good Clothes for All the Family  
at Pleasing Prices*

**OAK HALL**  
*Since 1914*

ROANOKE, VIRGINIA  
JEFFERSON AT CAMPBELL

*Compliments of*

ROANOKE MOTOR CAR  
CO., INC.

THIS TIME IT'S HUDSON

SALEM AVE. AND 6TH ST., S. W.

ROANOKE 4, VIRGINIA

*Compliments of*

BIBEE'S  
SUPER MARKET

*A Complete Food Market*

Fresh Meat    Frozen Food

2106 WILLIAMSON ROAD

*Quality Equipment for All Sports*

*The Sporting Goods  
Department*

NELSON HARDWARE  
CO.

*Southwest Virginia's Largest and  
Most Modern Sports Store*

Dial 3-2482

17-19 EAST CAMPBELL AVENUE  
ROANOKE, VIRGINIA



Corner First Street and  
Campbell Avenue

C. L. FIELDER CO., INC.

*Structural-Steel Fabricators and  
Erectors*

ROANOKE, VIRGINIA

CONCRETE  
READY MIXED CORP.

*Transit-Mixed Concrete*

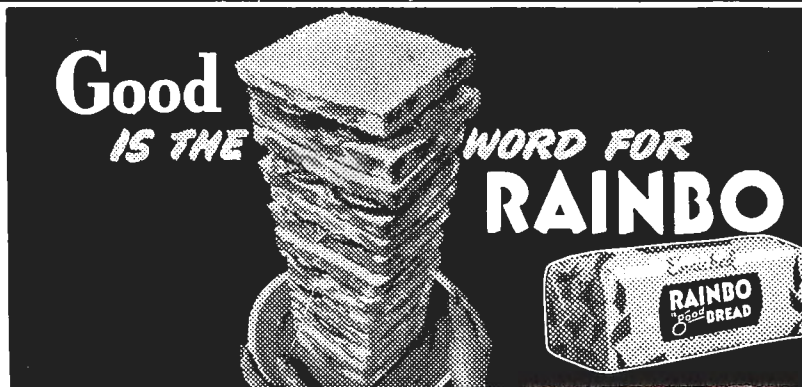
Dail 7271

611 NORFOLK AVENUE, S. W.

ADMIRATION  
BEAUTY PARLOR

Phone 2-0905

3 GRACE STREET, WILLIAMSON ROAD



TRAVELTOWN  
SWIMMING POOL

PURE WELL WATER  
CLOVERDALE  
City Bus Service to and from Pool

COON ELECTRIC  
CO., INC.

HOTPOINT APPLIANCES  
ELECTRICAL SUPPLIES  
RADIO REPAIRS

2320 WILLIAMSON ROAD  
Dial 3-5712

*Compliments of*

THE ROANOKE  
LEADER

*"Roanoke's Friendly Newspaper"*

22 LUCK AVENUE, S. W.  
Dial 3-1551      Roanoke, Virginia

Dial 3-6354

NOFSINGER  
CLEANERS

*"Better Cleaning"*

203 WILLIAMSON ROAD  
ROANOKE, VIRGINIA

SUNNYBROOK  
SERVICE STATION

D. N. THOMPSON AND SON  
GASOLINE—OIL—GROCERIES  
SOFT DRINKS

Phone 2-9303      Route 2, Box 512

  
*Lazarus*  
Millinery of Originality and Style

FOR FASHION DEPEND ON  
LAZARUS

Founded 1888      Dial 2-0832

THE HARRISON  
JEWELRY CO.

Serving Roanoke Sixty (60) Years  
307 SOUTH JEFFERSON STREET  
ROANOKE, VIRGINIA

GEORGE T. HITCH  
JEWELER

*Gift Shop*

118 WEST CAMPBELL AVENUE  
Dial 2-6113

*Gifts With a Future*

# Henebry's

REGISTERED JEWELERS  
AMERICAN GEM SOCIETY

*Hello  
Quinn, I have  
hoping that you  
and you will  
you all in 3rd and 4th grades  
all the parties you have come. How you  
love you when you  
see you when you  
see you when you*

Compliments of  
ROANOKE RAILWAY AND  
ELECTRIC COMPANY

*[Signature]*



FOWLKES &  
KEFAUVER, INC.

*Real Estate — Insurance*

PONCE DE LEON HOTEL BUILDING  
ROANOKE 5, VIRGINIA  
Dial 8846

C. H. WEBSTER & CO.,  
REALTORS

*Real Estate in All its Branches*

Loans Arranged  
Fast F. H. A. Financing

1218 WILLIAMSON ROAD  
(Kay's Ice Cream Building)

*Compliments of*

EDWARDS ATLANTIC  
STATION

INTERSECTION AIRPORT ROAD

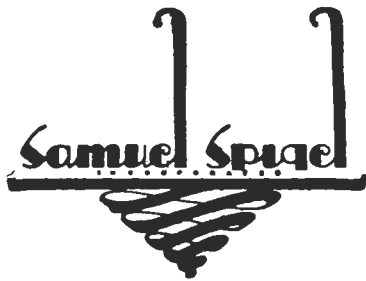
Phone 2-9444

*Air Conditioned*

JEFFERSON RECREATION  
PARLORS

11 Alleys Bowling  
18 Tables Billiards

309½ JEFFERSON STREET  
*Over Sportsman*



*Your Favorite Furrier*

AIR CONDITIONED

*You'll Enjoy Eating at the*  
LIGHTHOUSE RESTAURANT

*Fine Foods from Land and Sea*

NO BEER OR WINE

Member State Restaurant Ass'n

511 S. Jefferson St.      Roanoke, Va.

*Liberal Loans on Personal Property*  
*Unredeemed Pledges for Sale*

MURTCHEM'S  
INCORPORATED

I. A. MURTCHEM, *President and Manager*

10 SOUTH JEFFERSON STREET

Telephone 2-2652      Roanoke, Va.


*"The Man's Store and*  
*Shop for Boys"*

BUSH & HANCOCK

106 WEST CAMPBELL AVENUE


ROANOKE, VIRGINIA

Key note,  
 I guess you're a right nice guy. I've enjoyed knowing you though (I've never seen anybody since like you) Be good (if possible) See you around.  
 Abdul Rosta.

<p>F. A. GATES, <i>District Agent</i>          107 LESLIE ST., WILLIAMSON ROAD          STATE FARM MUTUAL          INSURANCE COMPANY  <i>Auto — Life — Fire</i>          116-B KIRK AVENUE, WEST          Phone 3-1776      Residence 3-7626</p>	 <p><i>Flowers and Gift Pottery</i>          18 EAST CAMPBELL AVENUE          Dial 3-1567</p>
<p>DIXIE          CREAM DONUTS  <i>"A Yeast-Raised, Glazed Donut"</i>          Dial 3-3761          7 BIG OAK AVENUE          WILLIAMSON ROAD</p>	<p>MABON GRILL          1417 WILLIAMSON ROAD  <i>Curb Service      Good Foods</i></p>
<p>Office Phone 2-0573      Res. Phone 2-6969          STRAIN COAL &amp;          BLOCK CO.          511 FUGATE ROAD          Williamson Road, R. F. D. No. 2          ROANOKE, VIRGINIA</p>	<p>WARNER'S          SUPER MARKET          GROCERIES—FRESH MEATS          VEGETABLES  <i>Complete Line Frozen Foods</i>          3402 WILLIAMSON ROAD      DIAL 3-2301</p>
<p><i>Young in Vigor — Old in Experience</i>          GIBSON RADIATOR          SHOP  <i>Expert Radiator Repairing</i>          Dial 3-1831          354 SALEM AVENUE, WEST          ROANOKE, VIRGINIA</p>	<p>Dial 2-2225      P. O. Box 359          VIRGINIA EQUIPMENT CO.          COMMERCIAL REFRIGERATION  <i>Sales and Service</i>          Anything Refrigerated          Consult Us with Your Problems  <i>James M. Dudley — Jarrell L. Dudley</i>          3404 WILLIAMSON ROAD, ROANOKE, VA.</p>

*Best of luck  
always to a  
swell person.  
Janette  
Simones*


<p>58 Years in Roanoke <i>There's a Reason</i></p> <p><b>BROTHERHOOD MERCANTILE CO.</b></p> <p><i>Clothiers for Men, Young Men and Students</i></p> <p>107 SOUTH JEFFERSON STREET ROANOKE, VIRGINIA</p>	<p>WSLS -:- WSLS - FM</p> <p><i>"The Shenandoah Life Stations"</i></p>
<p><i>Compliments of</i></p> <p><b>DOBBS RADIO SERVICE</b></p> <p>Phone 3-4926</p> <p>1513 WILLIAMSON ROAD</p>	<p><i>Compliments of</i></p> <p><b>ART PRINTING CO.</b></p> <p>418 1ST STREET, S. W.</p> <p>J. A. MANUEL</p>
<p><b>ROY L. WEBBER</b></p> <p><i>Florist</i></p> <p>2722 Williamson Road</p> <p><i>For the Best in Flowers</i></p> <p>DIAL 3-2469</p>	<p><i>Life Insurance and Annuities</i></p>
<p>DIAL 3-4483</p> <p><b>WM. P. SWARTZ, JR. &amp; CO.</b></p> <p>INCORPORATED</p> <p><i>Industrial—Institutional—Building</i></p> <p>DISTRIBUTION</p> <p><i>Supplies and Equipment</i></p> <p>421 Luck Avenue      Roanoke, Virginia</p>	<p><b><i>Shenandoak Life</i></b> <b>INSURANCE COMPANY, INC.</b></p> <p>PAUL C. BUFORD, PRESIDENT ROANOKE 10, VIRGINIA</p>

<p>HUNDLEY &amp; DEAN</p> <p><i>Painting, Decorating, Papering</i></p> <p>ROANOKE, VIRGINIA</p> <p>Phone 3-7677      P. O. Box 2295</p>	<p>THE CURTAIN SHOP INCORPORATED</p> <p><i>Interior Decorating</i></p> <p>Phone 3-1391</p> <p>408 SOUTH JEFFERSON STREET ROANOKE II, VIRGINIA</p>
<p><i>Kannis</i></p> <p><i>The All-Inclusive Specialty Shop</i></p> <p>309 SOUTH JEFFERSON STREET</p>	<p>JOSEPH SPIGEL, INC.</p> <p><i>Junior and Misses' Garments</i></p> <p>"School Girls' Favorite Store"</p> <p>CAMPBELL AVE. AT HENRY ST. ROANOKE, VIRGINIA</p>
<p>GILES BROTHERS</p> <p><i>Furniture</i></p> <p>16-18 EAST CHURCH AVENUE ROANOKE, VIRGINIA</p>	
<p><i>Compliments of</i></p> <p>KLENSALL CLEANERS</p> <p><i>"Try Our Dyeing Service"</i></p> <p>Dial 7317</p> <p>806 FRANKLIN ROAD, S. W.</p>	<p>ROANOKE PAINT AND GLASS CO.</p> <p><i>"Roanoke's Pioneer Paint Store"</i></p> <p>LOWE BROTHERS Paints, Varnish and Enamels</p> <p><i>Window Glass — Mirror Glass Wall Paper — Painters' Supplies</i></p> <p>10 E. CHURCH AVENUE Dial 2-1743      P. O. Box 383</p>

*Best of Luck  
 always. Don't  
 forget Roll Call.  
 Ronald Bryan*

<p>SAVORY FOODS, INC.          MARKET SQUARE  <i>Frosted Foods — Fine Groceries</i>  <i>Baked Goods — Delicatessen</i></p>	<p><i>Compliments of</i>  <b>J. G. SHEETS &amp; SONS</b>  <i>Realtors — Auctioneers</i>  <i>"The Best Investment on Earth          is the Earth"</i>          LIBERTY TRUST BUILDING          ROANOKE, VIRGINIA</p>
<p>NEWMAN'S          5C TO \$1.00 STORE  <i>A Neighborhood Dime Store</i>          2110 WILLIAMSON ROAD</p>	<p><i>Furniture Glass China</i>  <b>BROWN ANTIQUE          SHOP</b>          ACROSS FROM HOTEL ROANOKE          Phone 8294          Night, Dial 2-7036          ROANOKE, VIRGINIA</p>
<p>ABE HUDDLESTON  <i>New and Used Parts</i>  <i>Door Glass and Windshields Installed</i>  <i>Rebuilt Generators and Starters</i>          We Buy and Sell Used Cars          Buy Wrecked and Burnt Cars for Parts          Dial 4143          ROUTE 460, LYNCHBURG ROAD</p>	<p>ARMY &amp; NAVY          SALES CO.          Headquarters for N. &amp; W.          Work Clothes          Dial 8284          110 EAST CAMPBELL AVENUE</p>
<p>R. D. CREASY  <i>Fresh and Cured Meats</i>          STALL NO. 8          CITY MARKET          Dial 7124</p>	<p>TENTH STREET          TEXACO STATION          TEXACO GAS AND OILS  <i>Road Service</i>  <i>Washing and Waxing</i>  <i>Marfak Lubrication</i>          Dial 3-6244</p>

Good luck always!  
Robert Dudley

<p><i>Fine Furniture</i></p> <p>REID AND CUTSHALL</p> <p>309 CAMPBELL AVENUE, WEST</p> <p>Established 1924</p>	<p><i>Compliments of</i></p> <p>L. COHN &amp; SON</p> <p><i>Home of</i></p> <p>"BOTANY 500 CLOTHES"</p> <p><i>Tailored by Daroff</i></p>
<p><i>Compliments of</i></p> <p>LOTZ FUNERAL HOME., INC.</p> <p><i>"The Chapel with the Chimney"</i></p> <p>CHURCH AVE. AT PARK, S. W.</p> <p>Phone 7749</p>	<p>MERIN  STUDIOS</p> <p>1010 CHESTNUT STREET</p> <p>PHILADELPHIA 7, PENNSYLVANIA</p> <p>PENNYPACKER-5-5777</p>
<p>BEN F. SPULTZ</p> <p>DISTRIBUTING CO.</p> <p><i>Distributors</i></p> <p>"TOM'S" TOASTED PEANUTS</p> <p>Fine Candies, Peanut Butter Sandwiches and Potato Chips</p> <p>Dial 8689</p> <p>405 WILLIAMSON ROAD</p>	<p><i>Compliments of</i></p> <p>GARLAND &amp; PITTS</p> <p>DRUGSTORE</p>
<p><i>Compliments</i></p> <p><i>of</i></p> <p>UNITED PAWN</p> <p>SHOP</p>	<p>MOUNT SCENERY</p> <p>SERVICE STATION</p> <p><i>Good Gulf Gas and Oils</i></p> <p>Sandwiches, Drinks and Groceries</p> <p>3111 WILLIAMSON ROAD</p> <p>Phone 2-9354</p>

Remember 5th  
Jobs of luck to  
a swell guy (Moore)  
living low northside  
(Phone 777)

# C. T. Basham Plumbing and Heating Co.

CUN TYPE OIL BURNERS AND BOILERS FOR  
HOMES AND LARGE BUILDINGS

NO JOB TOO LARGE OR TOO SMALL

1132 14th Street

Phone 2-6308



*Engraved*

STATIONERY  
INVITATIONS  
ANNOUNCEMENTS  
CARDS

DIAL 6688

THE *Stone Printing and Manufacturing Co.*

116-132 NORTH JEFFERSON ST., ROANOKE, VIRGINIA  
CORRECT SOCIAL STATIONERY FOR OVER HALF A CENTURY

Hi Jack,  
"Sleepy"

How are ye doing?

Honestly, I think you are  
awfully sweet and cute.

If you don't be good you know  
what will happen you. Sometimes  
you are a bad boy. Really  
though, you are lots of fun  
and I hope will always  
be the best of friends.

Love,  
Shirley Lynne  
"Kelly"



Jack,  
you're a cute boy, I'm enjoying  
knowing you this year. Be good,  
and stay as cute as you are now.  
Love,

Aun Lee Beeman

